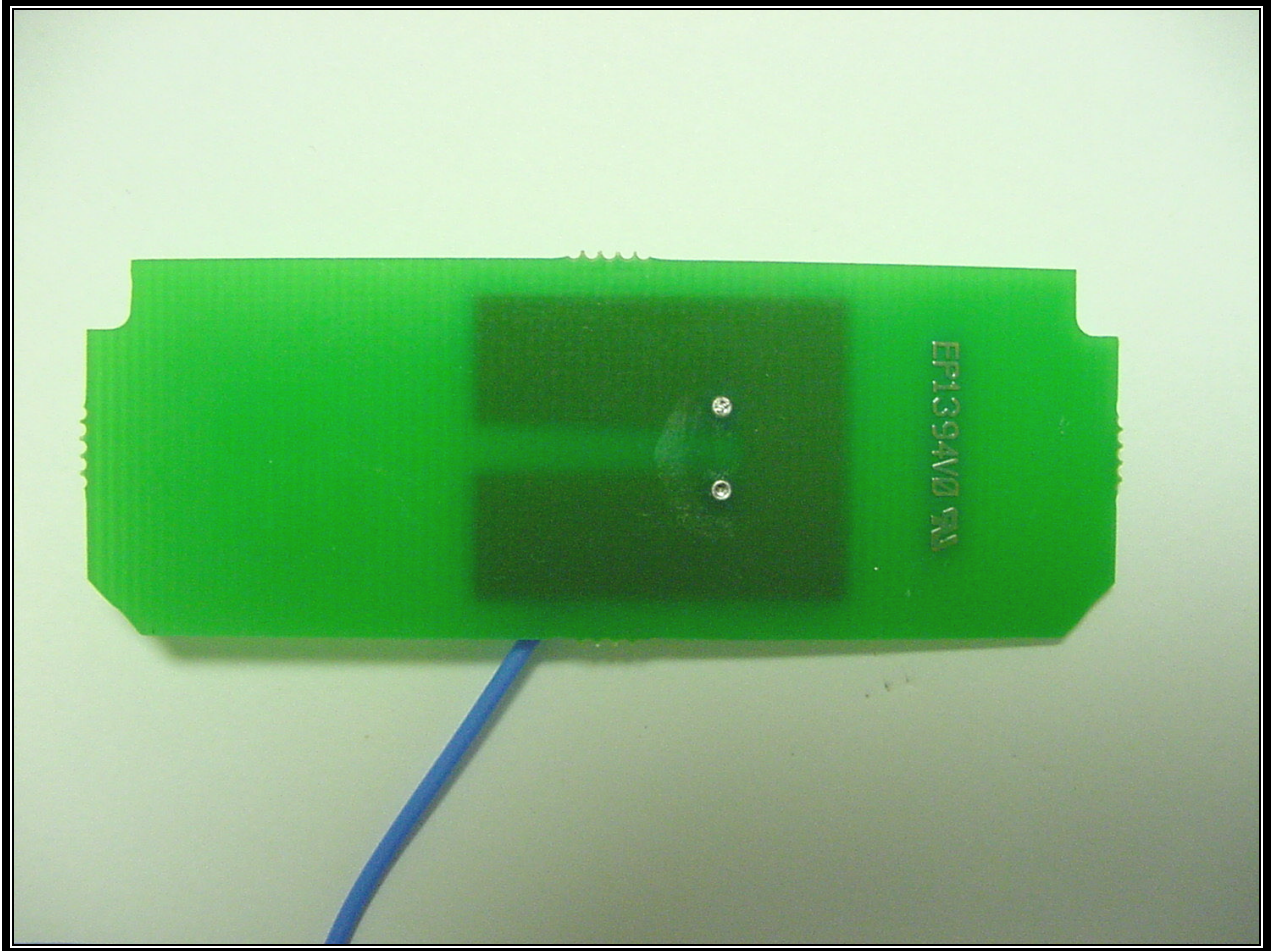


Rhein Tech Laboratories  
360 Herndon Parkway  
Suite 1400  
Herndon, VA 20170  
<http://www.rheintech.com>

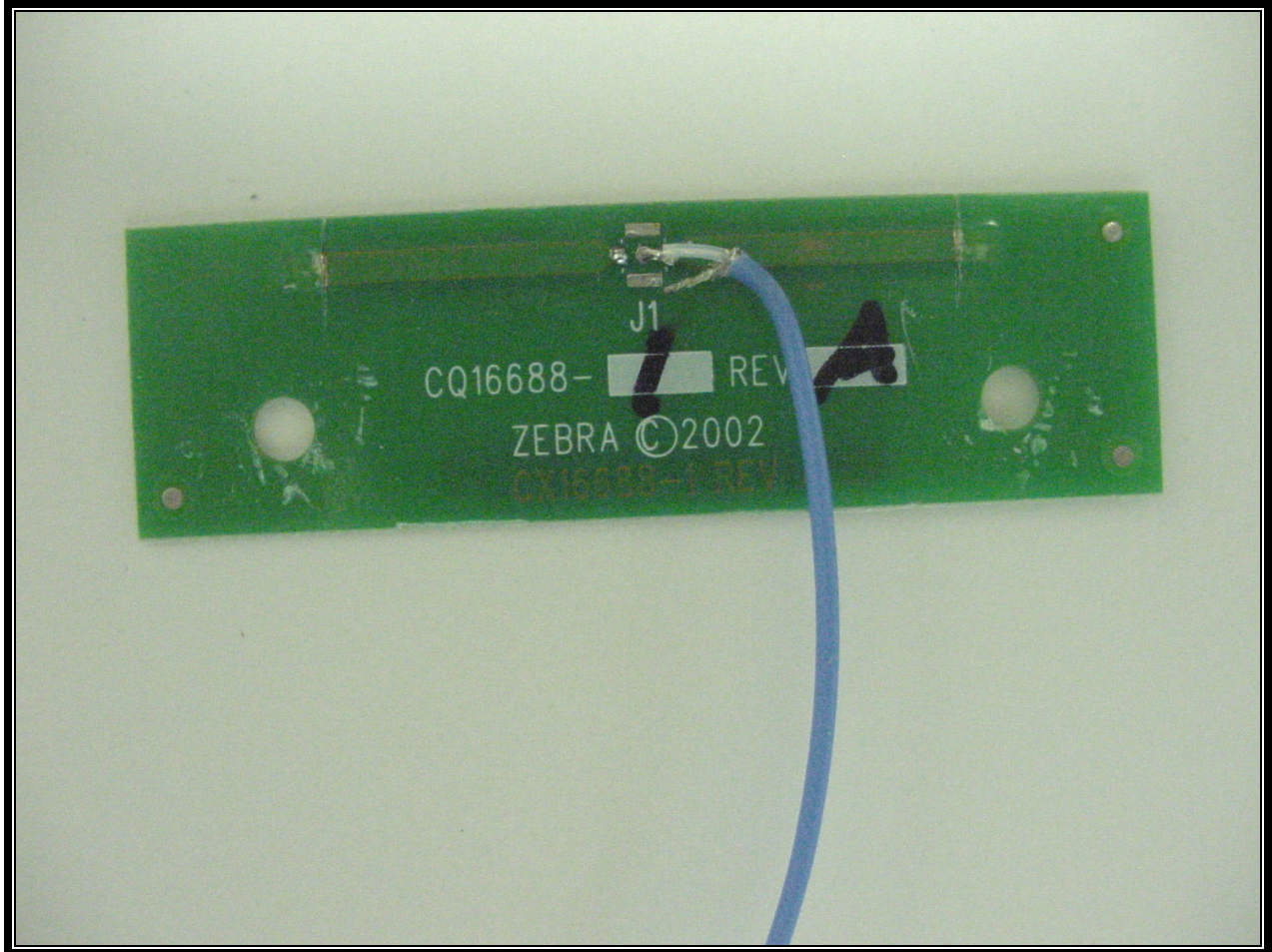
Client: Zebra Technologies Corp.  
Model Name/#: ZBR-3/EYSF2CAXX  
FCC ID: I28MD-BTC2TY2  
FCC: 15.247  
IC: RSS-210



**PHOTOGRAPH 44: ZPR POD (CQ15813-1) ANTENNA BACK VIEW**

Rhein Tech Laboratories  
360 Herndon Parkway  
Suite 1400  
Herndon, VA 20170  
<http://www.rheintech.com>

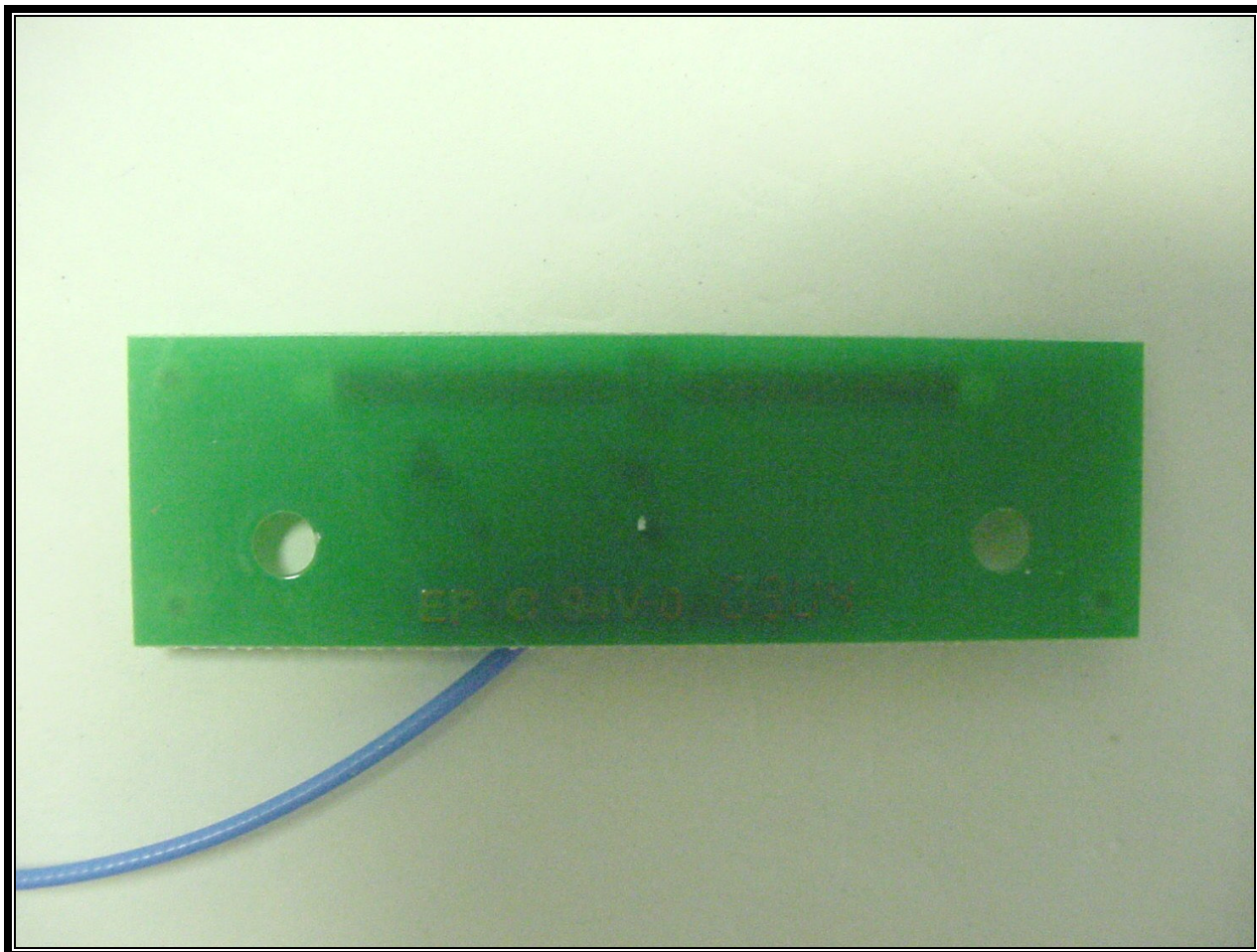
Client: Zebra Technologies Corp.  
Model Name/#: ZBR-3/EYSF2CAXX  
FCC ID: I28MD-BTC2TY2  
FCC: 15.247  
IC: RSS-210



**PHOTOGRAPH 45:** QL FAMILY 2<sup>ND</sup> GENERATION (CQ17383-1) ANTENNA FRONT VIEW

Rhein Tech Laboratories  
360 Herndon Parkway  
Suite 1400  
Herndon, VA 20170  
<http://www.rheintech.com>

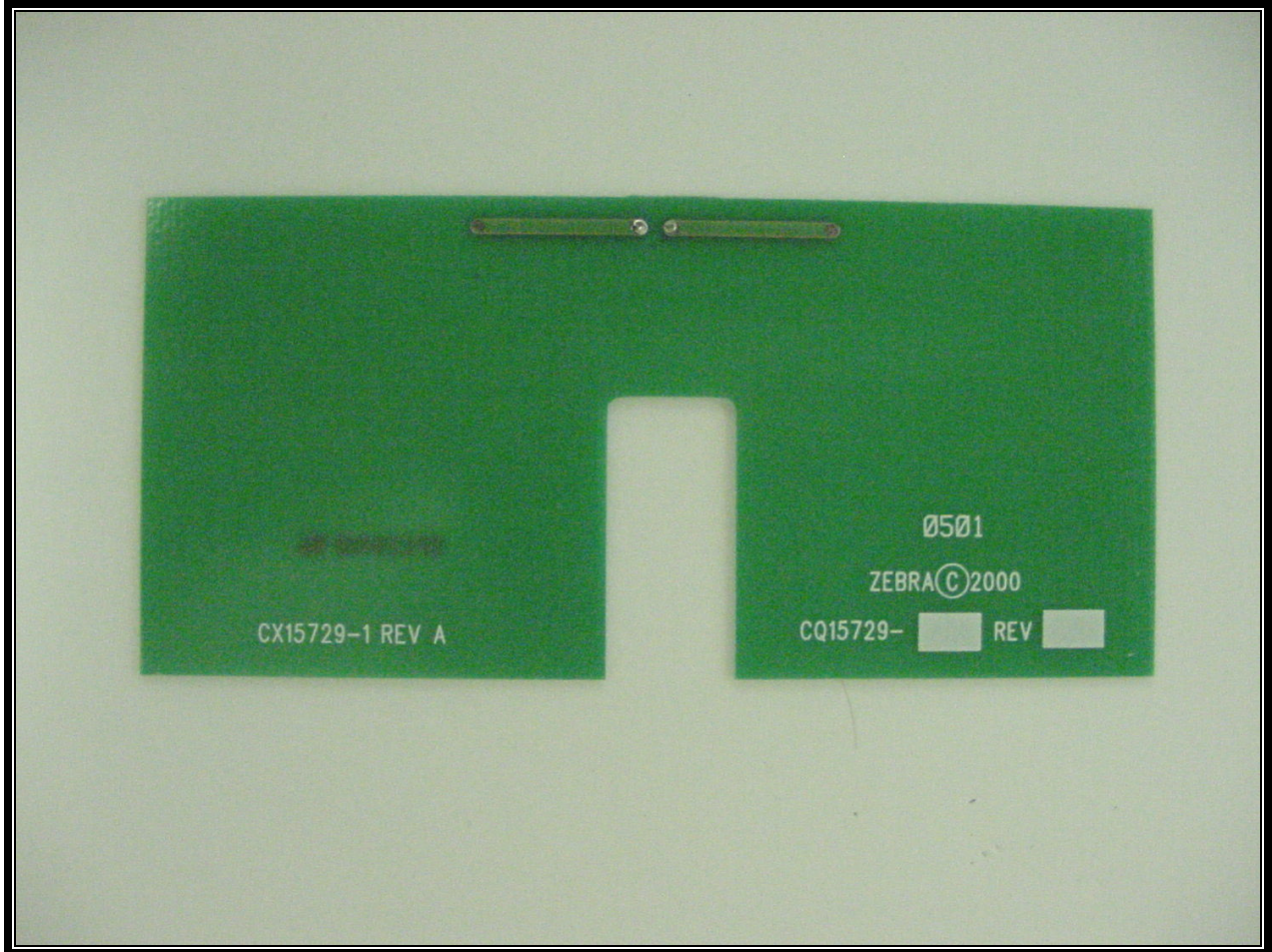
Client: Zebra Technologies Corp.  
Model Name/#: ZBR-3/EYSF2CAXX  
FCC ID: I28MD-BTC2TY2  
FCC: 15.247  
IC: RSS-210



**PHOTOGRAPH 46: QL FAMILY 2<sup>ND</sup> GENERATION (CQ17383-1) ANTENNA BACK VIEW**

Rhein Tech Laboratories  
360 Herndon Parkway  
Suite 1400  
Herndon, VA 20170  
<http://www.rheintech.com>

Client: Zebra Technologies Corp.  
Model Name/ #: ZBR-3/EYSF2CAXX  
FCC ID: I28MD-BTC2TY2  
FCC: 15.247  
IC: RSS-210



**PHOTOGRAPH 47: CAMEO 3 PEP (CQ15729-1) ANTENNA FRONT VIEW**