

SAR Data Report 02080517

Start : 5-Aug-02 03:39:30 pm
End : 5-Aug-02 03:47:45 pm
Code Version : 4.08
Robot Version: 4.08

Product Data:

Type : ZEBRA
Model Number : PS2122
Serial Number : 1
Frequency : 2412 MHz
Transmit Pwr : 0.135 W
Antenna Type : BEDG
Antenna Posn. : Internal

Measurement Data:

Phantom Name : SAM-FLAT
Phantom Type : Uniphantom
Tissue Type : Muscle
Tissue Dielectric : 53.570
Tissue Conductivity : 1.960
Tissue Density : 1.000
Robot Name : CRS

Probe Data:

Probe Name : PCT25
Probe Type : E Fld Triangle
Frequency : 2450 MHz
Tissue Type : Muscle
Calibrated Dielectric : 49.200
Calibrated Conductivity : 1.950
Calibrated Density : 1.000
Probe Offset : 2.400 mm
Conversion Factor : 16.500
Probe Sensitivity : 0.753 0.726 0.683 mV/(mW/cm^2)
Amplifier Gains : 20.00 20.00 20.00

Sample:

Rate: 6000 Samples/Sec
Count: 100 Samples
NIDAQ Gain: 5

Comments:

DSSS MODE Low Channel
BODY (BACK)
CF=1; Amb. Temp= 22.2 'C; Liq. Temp=22.1 'C

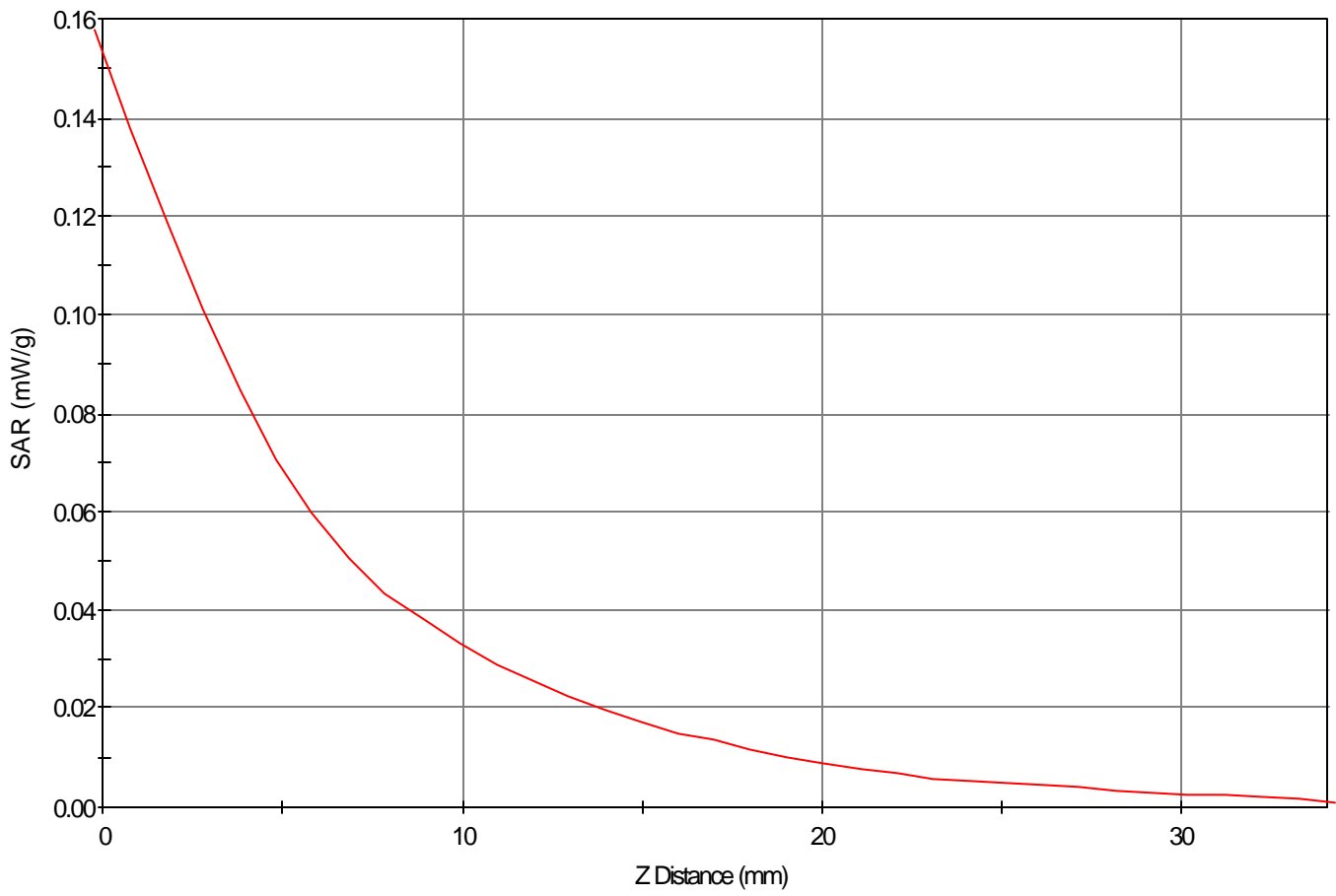
Area Scan - Max Peak SAR Value at x=5.0 y=71.0 = 0.04 W/kg

Zoom Scan - Max Peak SAR Value at x=13.0 y=81.0 z=0.0 = 0.15 W/kg

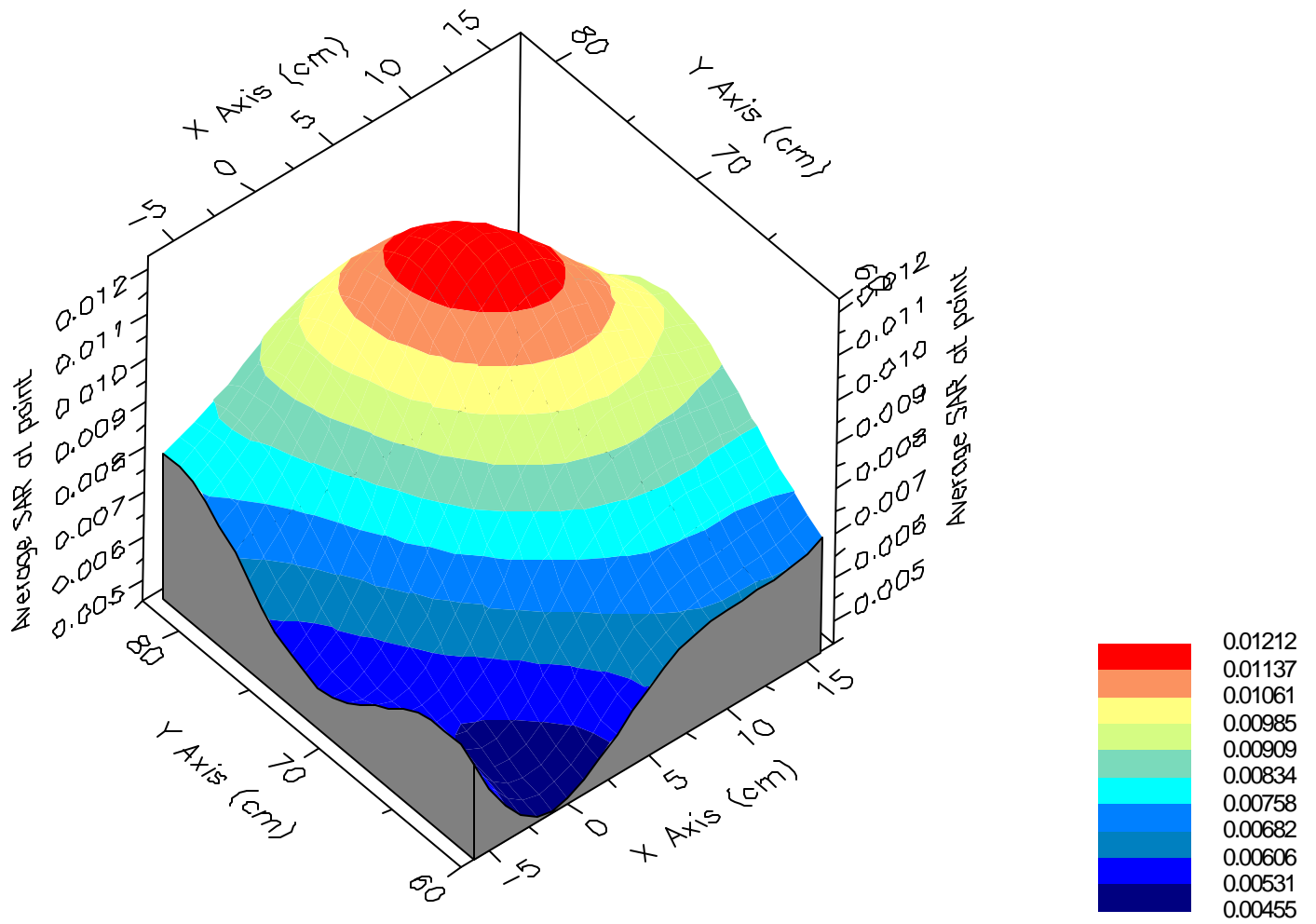
Max 1g SAR at x=14.0 y=81.0 z=0.0 = 0.04 W/kg

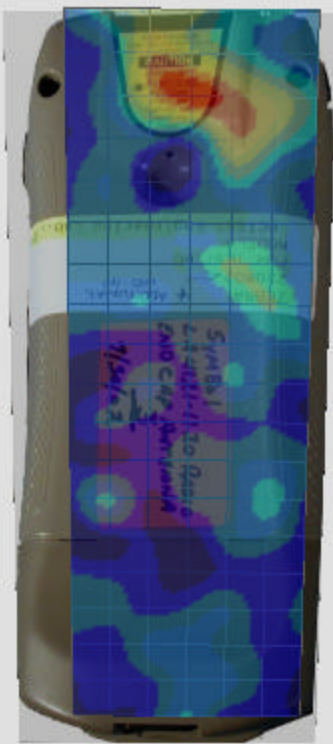
Max 10g SAR at x=10.0 y=73.0 z=0.0 = 0.02 W/kg

SAR - Z Axis
at Hotspot x:13.0 y:81.0



1g SAR Values





SAR Data Report 02080514

Start : 5-Aug-02 02:55:20 pm
End : 5-Aug-02 03:03:36 pm
Code Version : 4.08
Robot Version: 4.08

Product Data:

Type : ZEBRA
Model Number : PS2122
Serial Number : 1
Frequency : 2412 MHz
Transmit Pwr : 0.135 W
Antenna Type : BEDG
Antenna Posn. : Internal

Measurement Data:

Phantom Name : SAM-FLAT
Phantom Type : Uniphantom
Tissue Type : Muscle
Tissue Dielectric : 53.570
Tissue Conductivity : 1.960
Tissue Density : 1.000
Robot Name : CRS

Probe Data:

Probe Name : PCT25
Probe Type : E Fld Triangle
Frequency : 2450 MHz
Tissue Type : Muscle
Calibrated Dielectric : 49.200
Calibrated Conductivity : 1.950
Calibrated Density : 1.000
Probe Offset : 2.400 mm
Conversion Factor : 16.500
Probe Sensitivity : 0.753 0.726 0.683 mV/(mW/cm^2)
Amplifier Gains : 20.00 20.00 20.00

Sample:

Rate: 6000 Samples/Sec
Count: 100 Samples
NIDAQ Gain: 5

Comments:

DSSS MODE Low Channel
BODY (SCREEN)
CF=1; Amb. Temp= 22.2 'C; Liq. Temp=22.1 'C

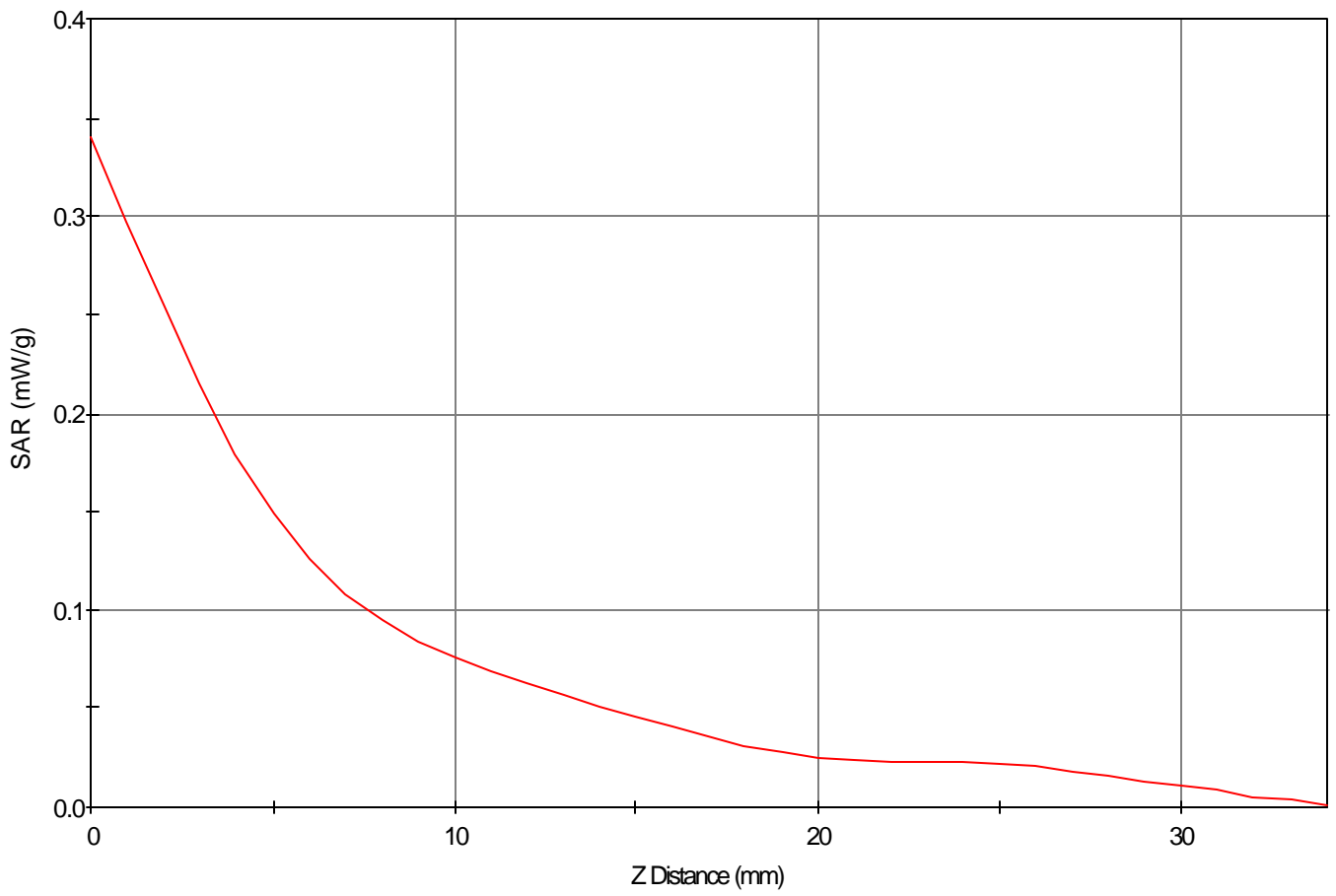
Area Scan - Max Peak SAR Value at x=-2.0 y=66.0 = 0.17 W/kg

Zoom Scan - Max Peak SAR Value at x=-11.0 y=66.0 z=0.0 = 0.34 W/kg

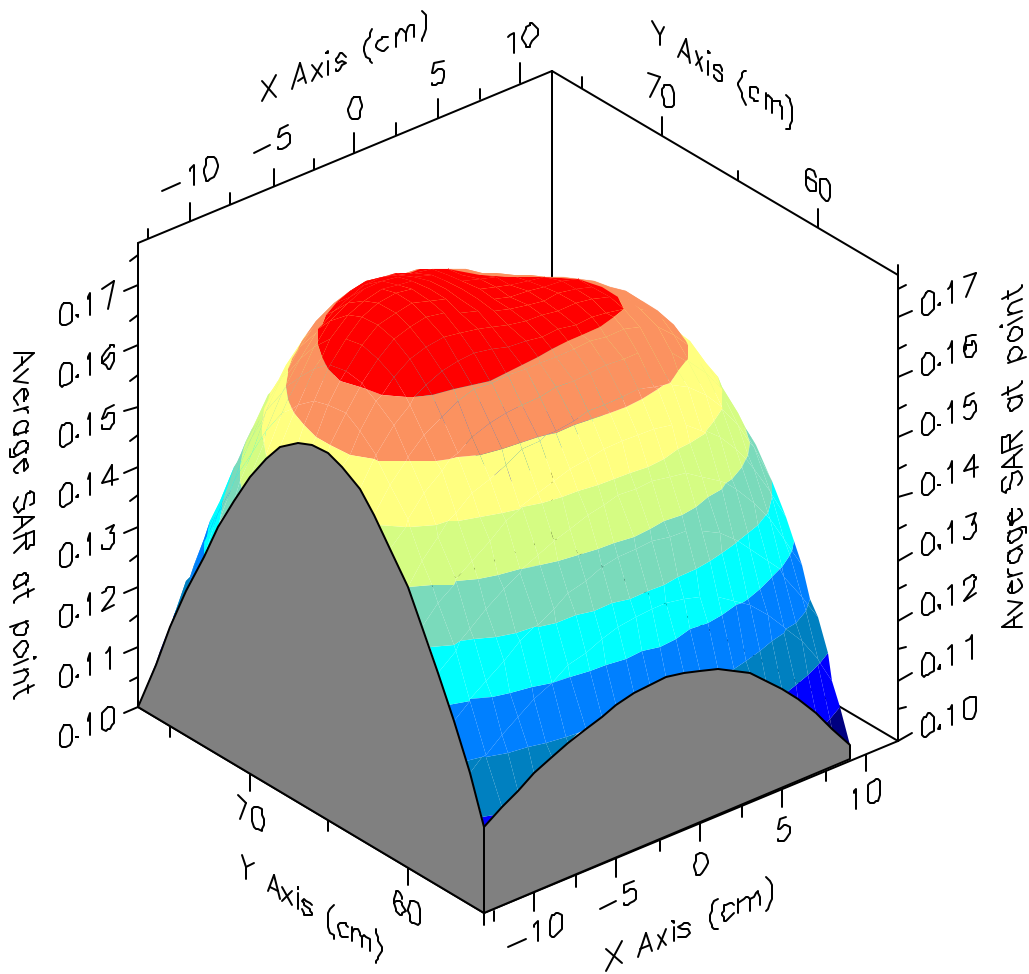
Max 1g SAR at x=-7.0 y=67.0 z=0.0 = 0.18 W/kg

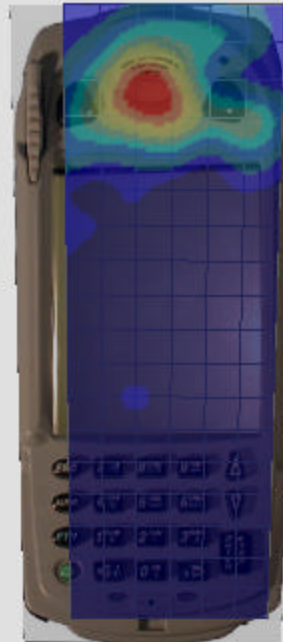
Max 10g SAR at x=-2.0 y=66.0 z=0.0 = 0.10 W/kg

SAR - Z Axis
at Hotspot x:-11.0 y:66.0



1g SAR Values





SAR Data Report 02080502

Start : 5-Aug-02 11:12:41 am
End : 5-Aug-02 11:20:11 am
Code Version : 4.08
Robot Version: 4.08

Product Data:

Type : ZEBRA
Model Number : PS2122
Serial Number : 3
Frequency : 2412 MHz
Transmit Pwr : 0.135 W
Antenna Type : End Cap
Antenna Posn. : Internal

Measurement Data:

Phantom Name : SAM-FLAT
Phantom Type : Uniphantom
Tissue Type : Muscle
Tissue Dielectric : 53.570
Tissue Conductivity : 1.960
Tissue Density : 1.000
Robot Name : CRS

Probe Data:

Probe Name : PCT25
Probe Type : E Fld Triangle
Frequency : 2450 MHz
Tissue Type : Muscle
Calibrated Dielectric : 49.200
Calibrated Conductivity : 1.950
Calibrated Density : 1.000
Probe Offset : 2.400 mm
Conversion Factor : 16.500
Probe Sensitivity : 0.753 0.726 0.683 mV/(mW/cm^2)
Amplifier Gains : 20.00 20.00 20.00

Sample:

Rate: 6000 Samples/Sec
Count: 100 Samples
NIDAQ Gain: 5

Comments:

DSSS MODE - Low Channel
BODY (BACK)
CF=1; Amb. Temp= 22.2 'C; Liq. Temp=22.1 'C

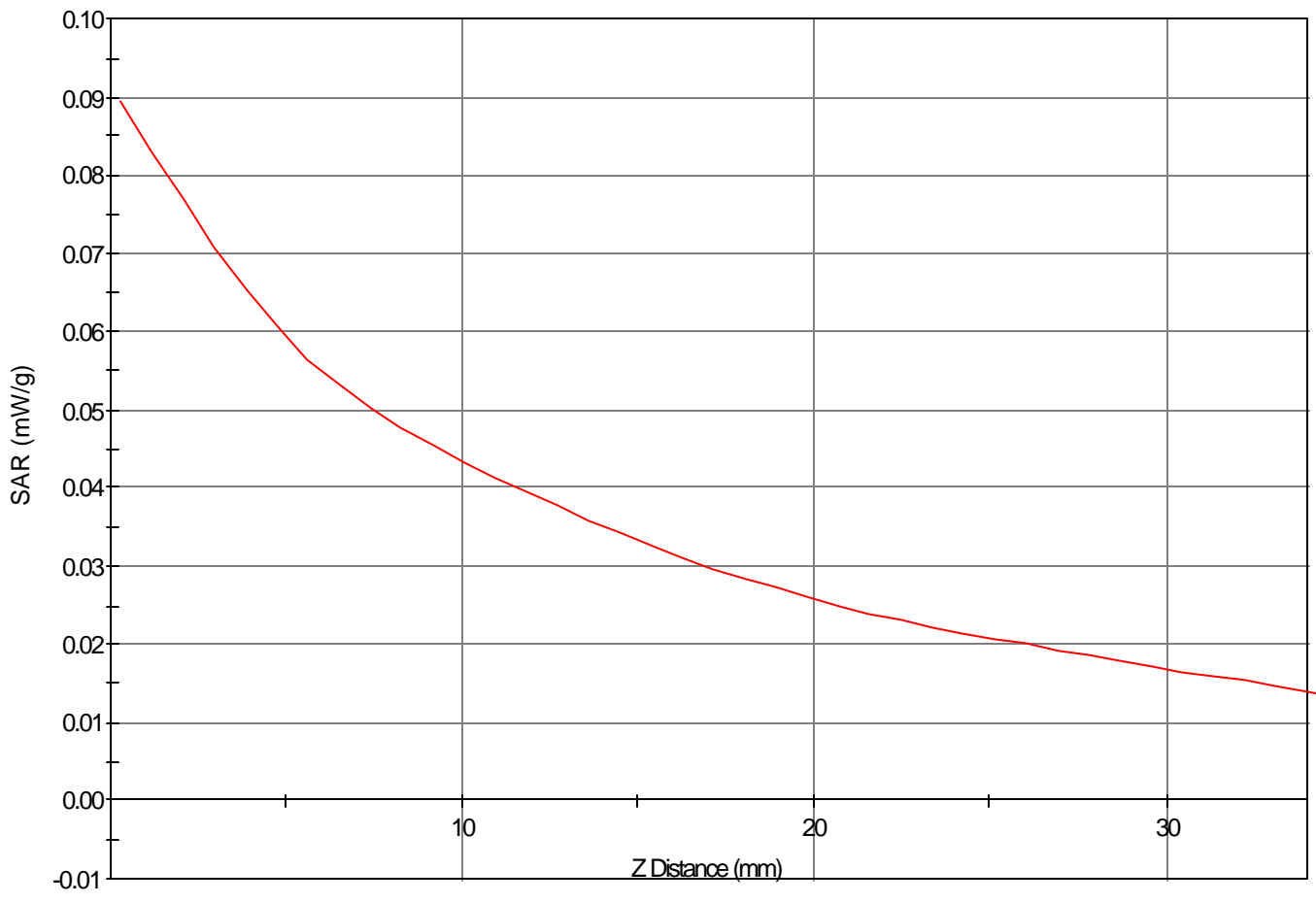
Area Scan - Max Peak SAR Value at x=30.0 y=-19.0 = 0.01 W/kg

Zoom Scan - Max Peak SAR Value at x=37.0 y=-9.0 z=0.0 = 0.09 W/kg

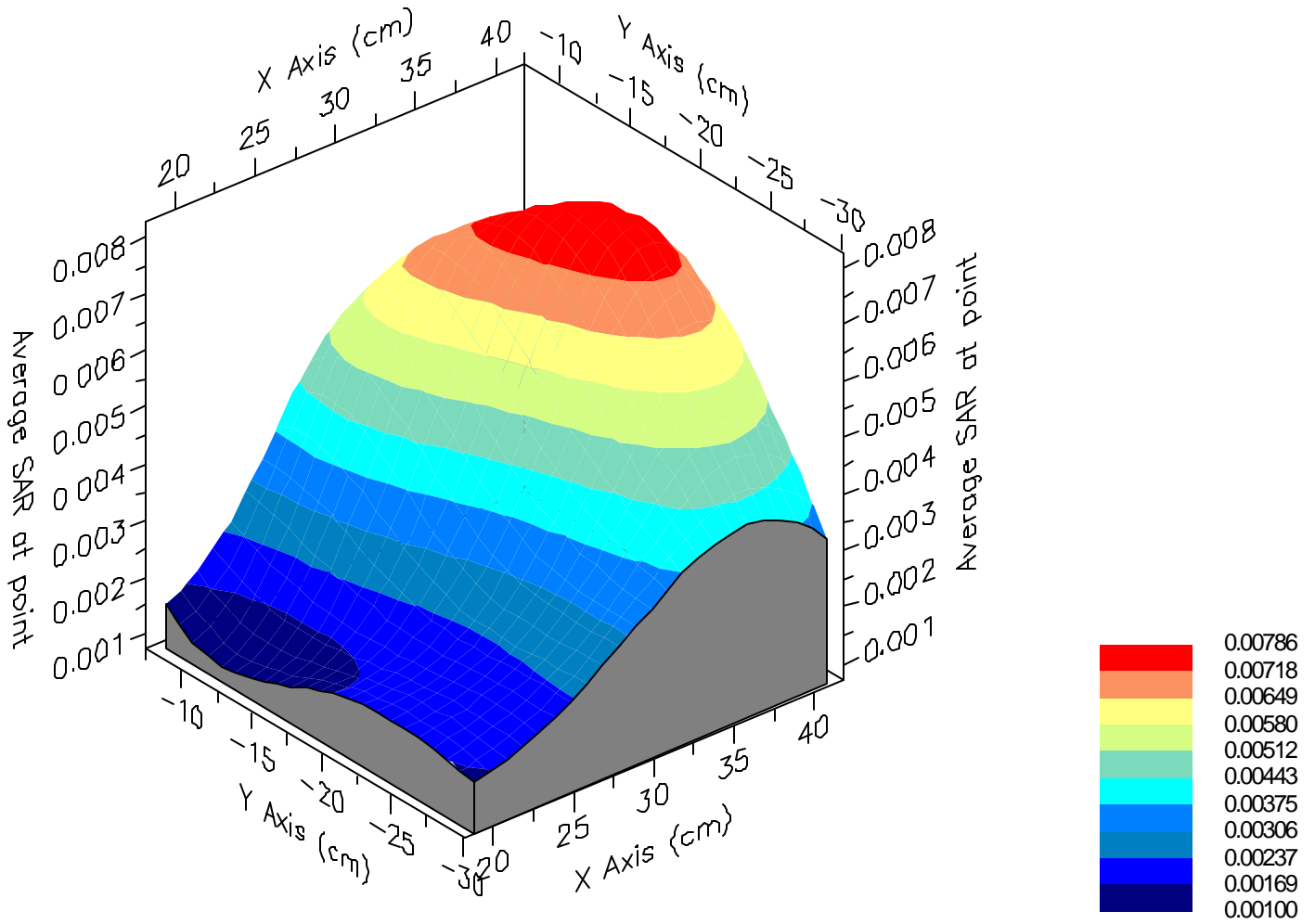
Max 1g SAR at x=35.0 y=-9.0 z=0.0 = 0.02 W/kg

Max 10g SAR at x=33.0 y=-14.0 z=0.0 = 0.01 W/kg

SAR - Z Axis
at Hotspot x:37.0 y:-9.0



1g SAR Values



SAR Data Report 02080506

Start : 5-Aug-02 12:43:15 pm
End : 5-Aug-02 12:50:49 pm
Code Version : 4.08
Robot Version: 4.08

Product Data:

Type : ZEBRA
Model Number : PS2122
Serial Number : 3
Frequency : 2412 MHz
Transmit Pwr : 0.135 W
Antenna Type : End Cap
Antenna Posn. : Internal

Measurement Data:

Phantom Name : SAM-FLAT
Phantom Type : Uniphantom
Tissue Type : Muscle
Tissue Dielectric : 53.570
Tissue Conductivity : 1.960
Tissue Density : 1.000
Robot Name : CRS

Probe Data:

Probe Name : PCT25
Probe Type : E Fld Triangle
Frequency : 2450 MHz
Tissue Type : Muscle
Calibrated Dielectric : 49.200
Calibrated Conductivity : 1.950
Calibrated Density : 1.000
Probe Offset : 2.400 mm
Conversion Factor : 16.500
Probe Sensitivity : 0.753 0.726 0.683 mV/(mW/cm^2)
Amplifier Gains : 20.00 20.00 20.00

Sample:

Rate: 6000 Samples/Sec
Count: 100 Samples
NIDAQ Gain: 5

Comments:

DSSS MODE - Low Channel
BODY (SCREEN)
CF=1; Amb. Temp= 22.2 'C; Liq. Temp=22.1 'C

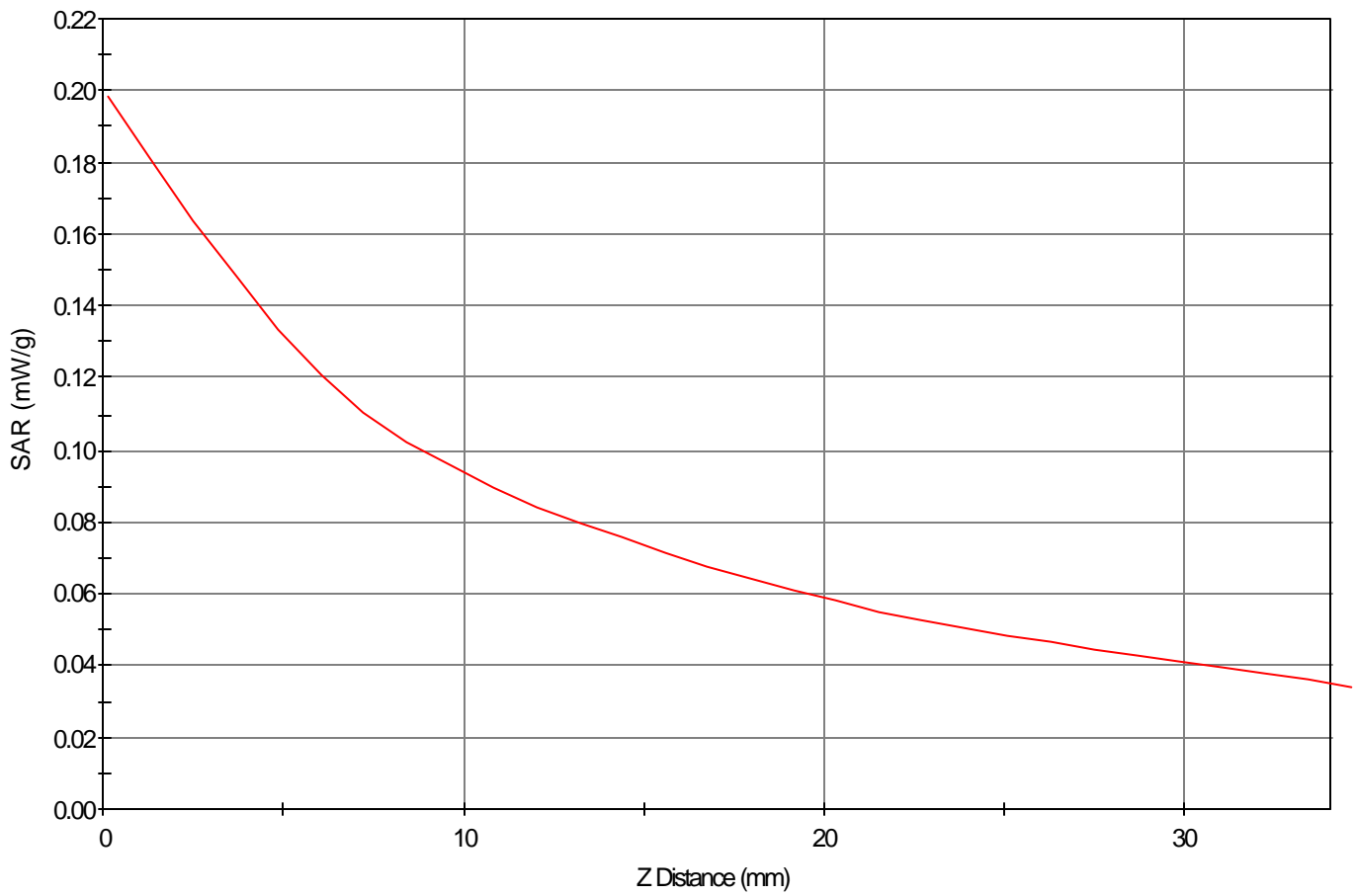
Area Scan - Max Peak SAR Value at x=-5.0 y=59.0 = 0.06 W/kg

Zoom Scan - Max Peak SAR Value at x=-11.0 y=58.0 z=0.0 = 0.20 W/kg

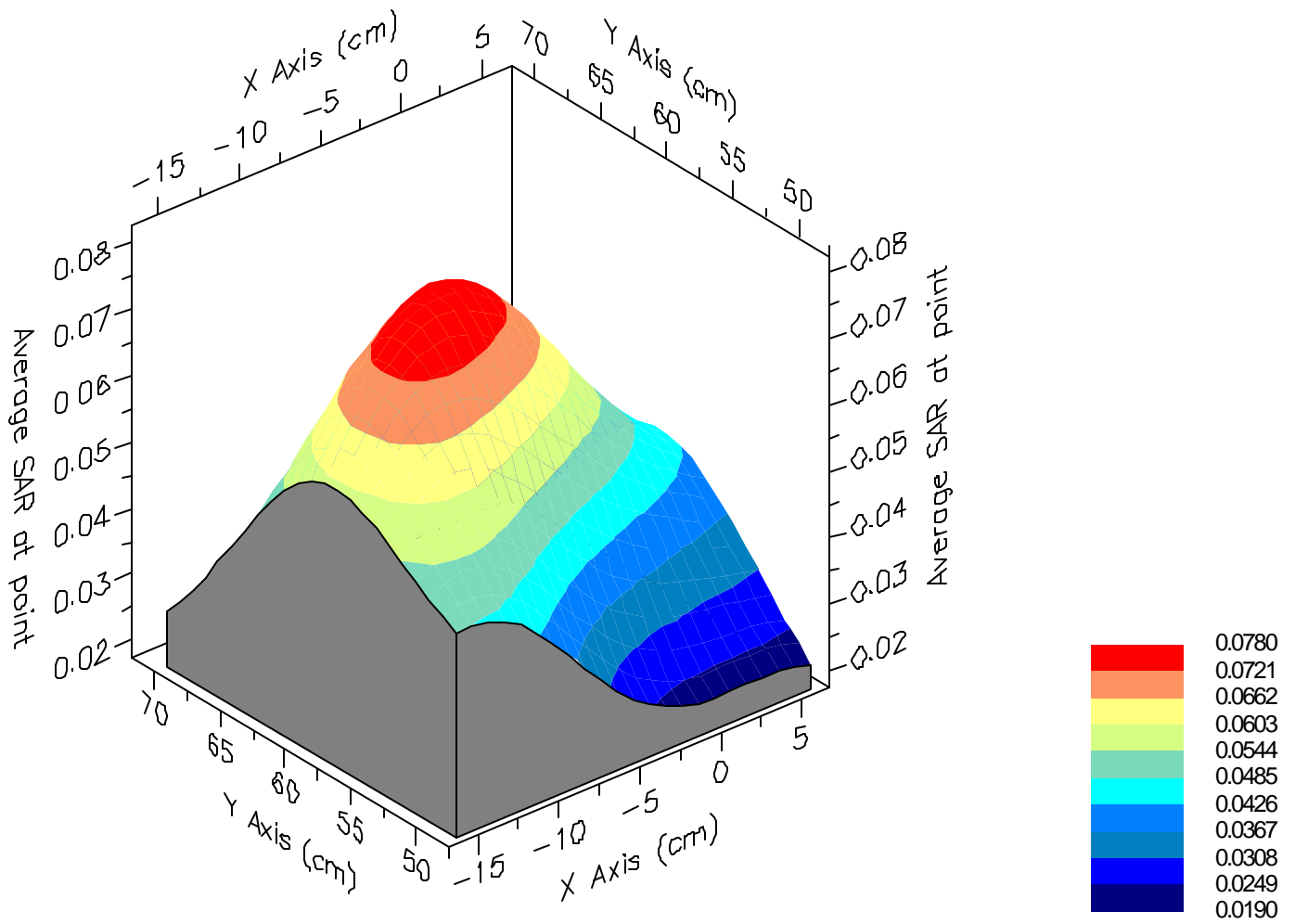
Max 1g SAR at x=-8.0 y=59.0 z=0.0 = 0.08 W/kg

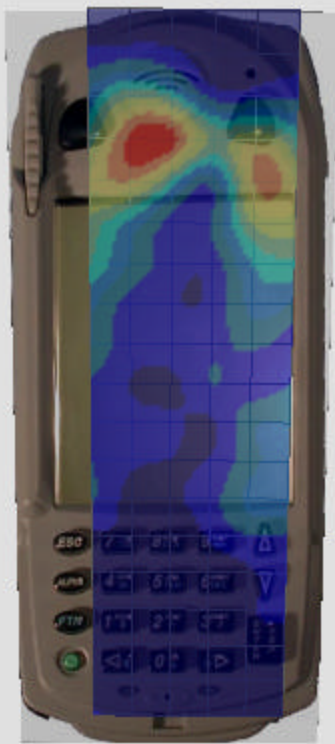
Max 10g SAR at x=-8.0 y=58.0 z=0.0 = 0.03 W/kg

SAR - Z Axis
at Hotspot x:-11.0 y:58.0



1g SAR Values





SAR Data Report 02080509

Start : 5-Aug-02 02:05:21 pm
End : 5-Aug-02 02:13:04 pm
Code Version : 4.08
Robot Version: 4.08

Product Data:

Type : ZEBRA
Model Number : PS2122
Serial Number : 1
Frequency : 2412 MHz
Transmit Pwr : 0.135 W
Antenna Type : BEDG
Antenna Posn. : Internal

Measurement Data:

Phantom Name : SAM-FLAT
Phantom Type : Uniphantom
Tissue Type : Muscle
Tissue Dielectric : 53.570
Tissue Conductivity : 1.960
Tissue Density : 1.000
Robot Name : CRS

Probe Data:

Probe Name : PCT25
Probe Type : E Fld Triangle
Frequency : 2450 MHz
Tissue Type : Muscle
Calibrated Dielectric : 49.200
Calibrated Conductivity : 1.950
Calibrated Density : 1.000
Probe Offset : 2.400 mm
Conversion Factor : 16.500
Probe Sensitivity : 0.753 0.726 0.683 mV/(mW/cm^2)
Amplifier Gains : 20.00 20.00 20.00

Sample:

Rate: 6000 Samples/Sec
Count: 100 Samples
NIDAQ Gain: 5

Comments:

DSSS MODE - LOW CHANNEL
BODY (WITH BASE)
CF=1; Amb. Temp= 22.2 'C; Liq. Temp=22.1 'C

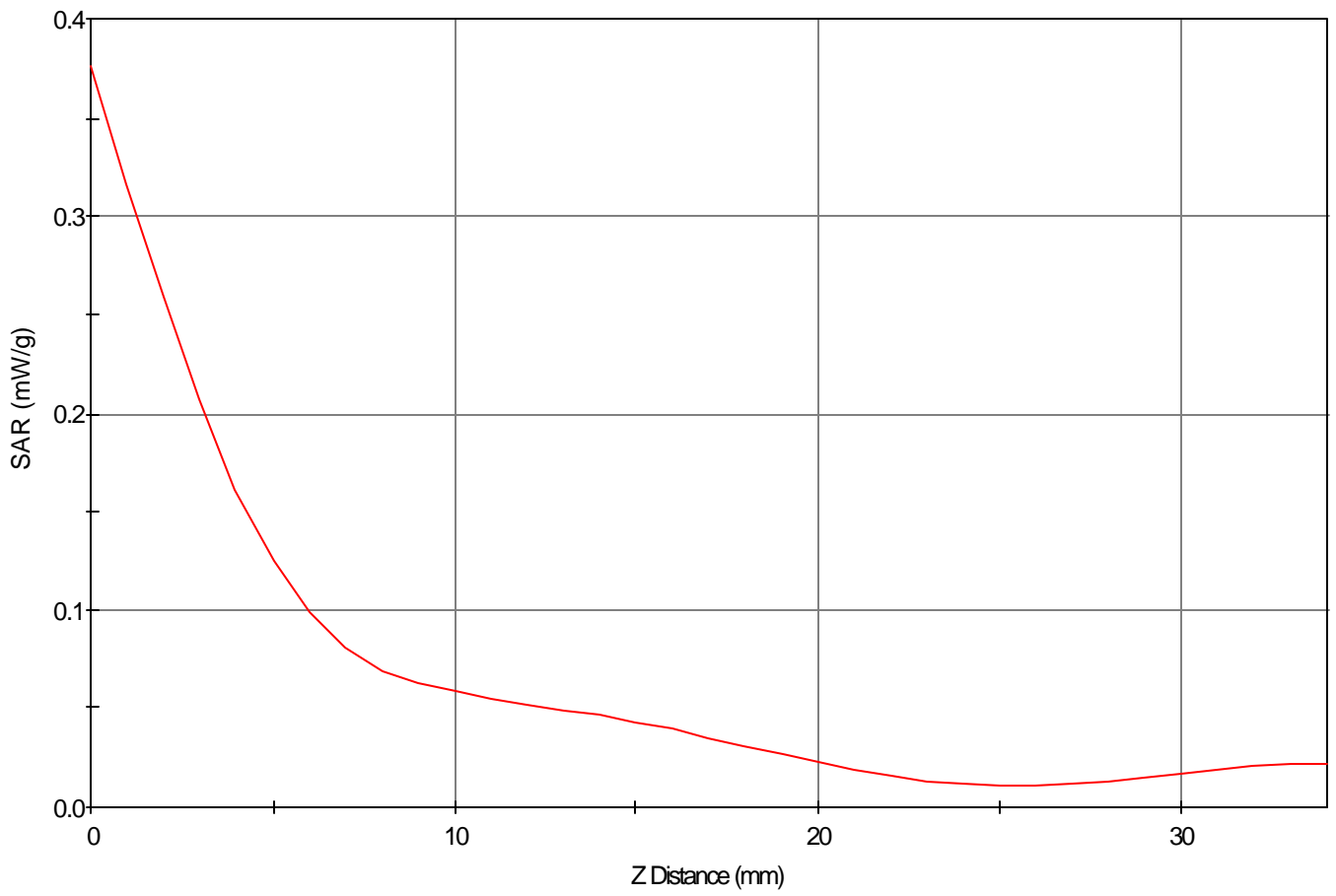
Area Scan - Max Peak SAR Value at x=-5.0 y=69.0 = 0.16 W/kg

Zoom Scan - Max Peak SAR Value at x=-2.0 y=76.0 z=0.0 = 0.38 W/kg

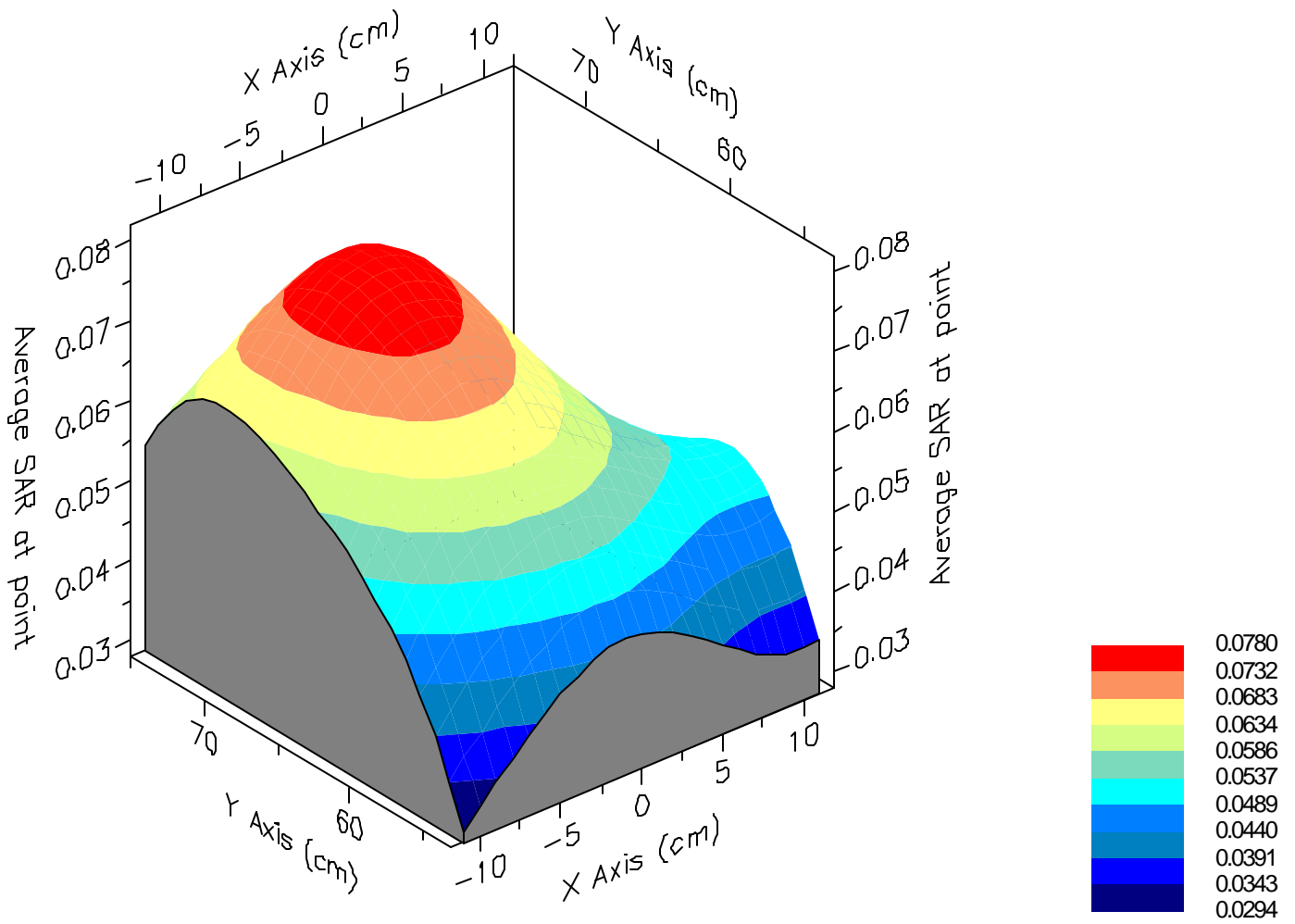
Max 1g SAR at x=-2.0 y=72.0 z=0.0 = 0.17 W/kg

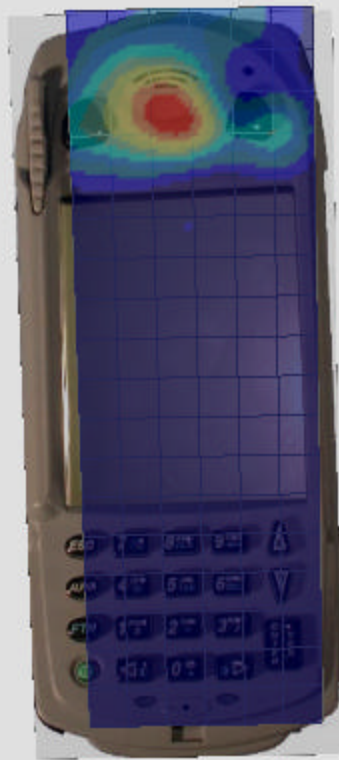
Max 10g SAR at x=-3.0 y=69.0 z=0.0 = 0.09 W/kg

SAR - Z Axis
at Hotspot x:-2.0 y:76.0



1g SAR Values





SAR Data Report 02080512

Start : 5-Aug-02 02:29:26 pm
End : 5-Aug-02 02:37:41 pm
Code Version : 4.08
Robot Version: 4.08

Product Data:

Type : ZEBRA
Model Number : PS2122
Serial Number : 3
Frequency : 2412 MHz
Transmit Pwr : 0.135 W
Antenna Type : End Cap
Antenna Posn. : Internal

Measurement Data:

Phantom Name : SAM-FLAT
Phantom Type : Uniphantom
Tissue Type : Muscle
Tissue Dielectric : 53.570
Tissue Conductivity : 1.960
Tissue Density : 1.000
Robot Name : CRS

Probe Data:

Probe Name : PCT25
Probe Type : E Fld Triangle
Frequency : 2450 MHz
Tissue Type : Muscle
Calibrated Dielectric : 49.200
Calibrated Conductivity : 1.950
Calibrated Density : 1.000
Probe Offset : 2.400 mm
Conversion Factor : 16.500
Probe Sensitivity : 0.753 0.726 0.683 mV/(mW/cm^2)
Amplifier Gains : 20.00 20.00 20.00

Sample:

Rate: 6000 Samples/Sec
Count: 100 Samples
NIDAQ Gain: 5

Comments:

DSSS MODE - Low Channel
BODY (WITH BASE)
CF=1; Amb. Temp= 22.2 'C; Liq. Temp=22.1 'C

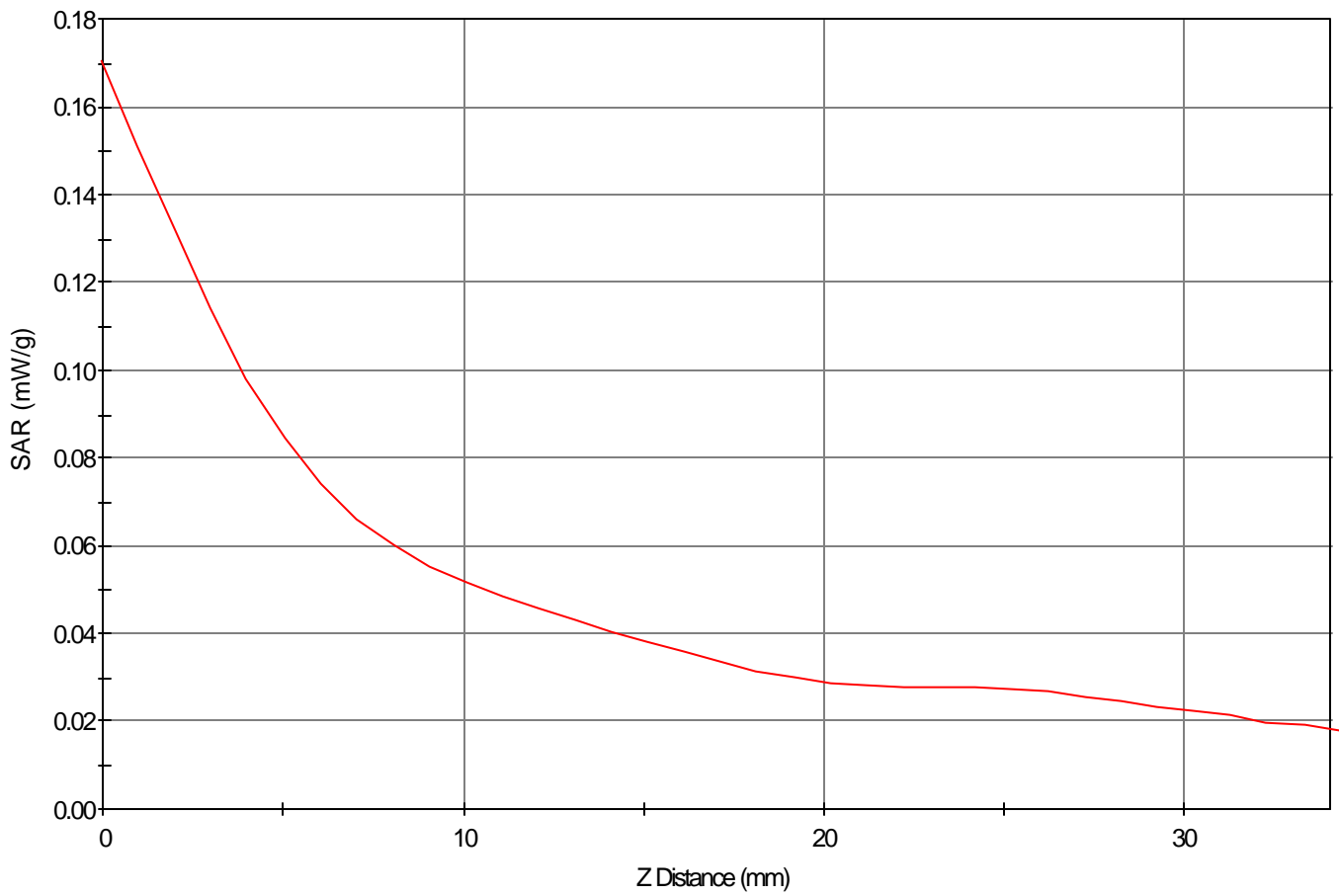
Area Scan - Max Peak SAR Value at x=0.0 y=64.0 = 0.08 W/kg

Zoom Scan - Max Peak SAR Value at x=16.0 y=56.0 z=0.0 = 0.17 W/kg

Max 1g SAR at x=-3.0 y=68.0 z=0.0 = 0.08 W/kg

Max 10g SAR at x=-3.0 y=66.0 z=0.0 = 0.04 W/kg

SAR - Z Axis
at Hotspot x:16.0 y:56.0



1g SAR Values

