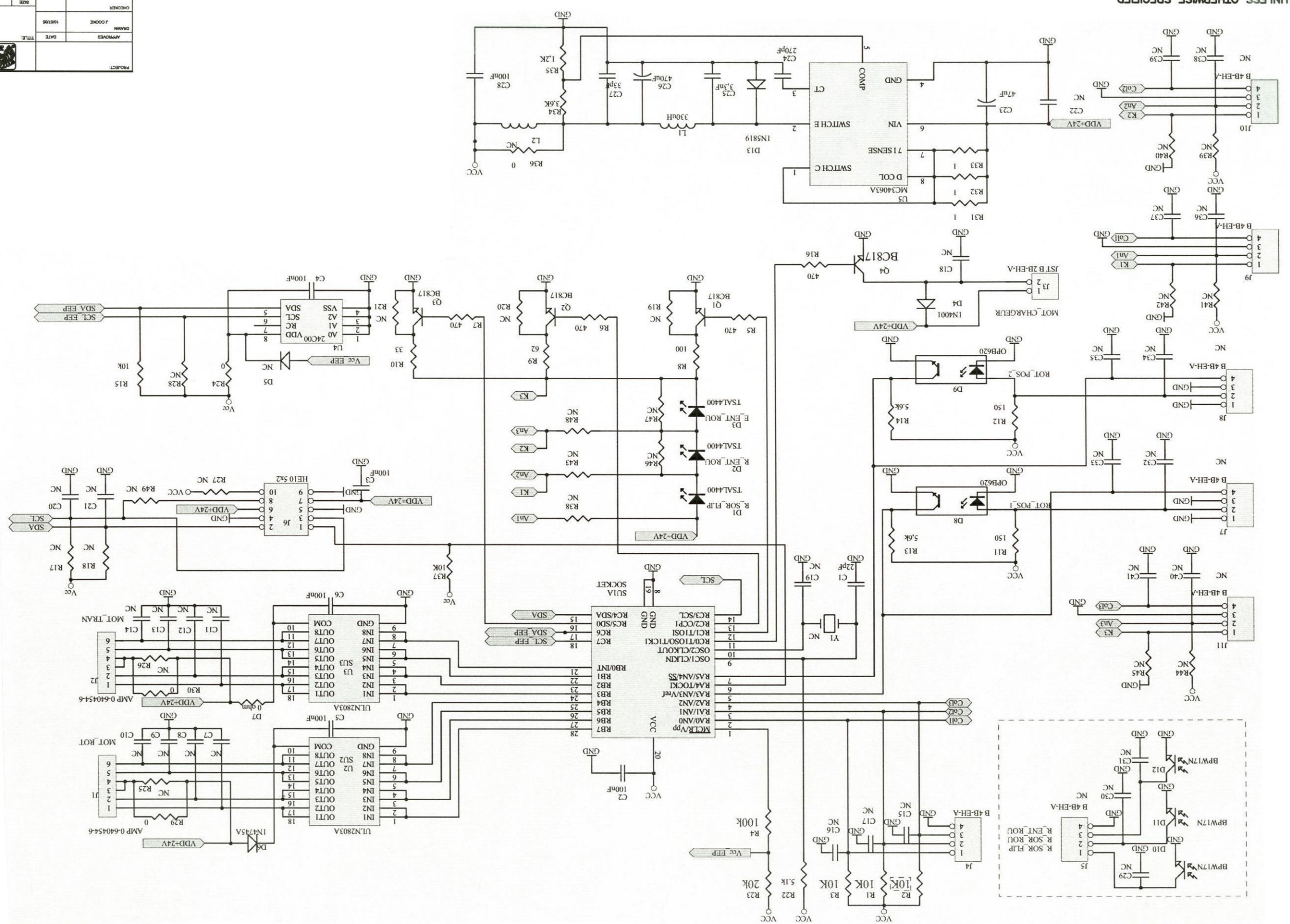


NOTES: UNLESS OTHERWISE SPECIFIED



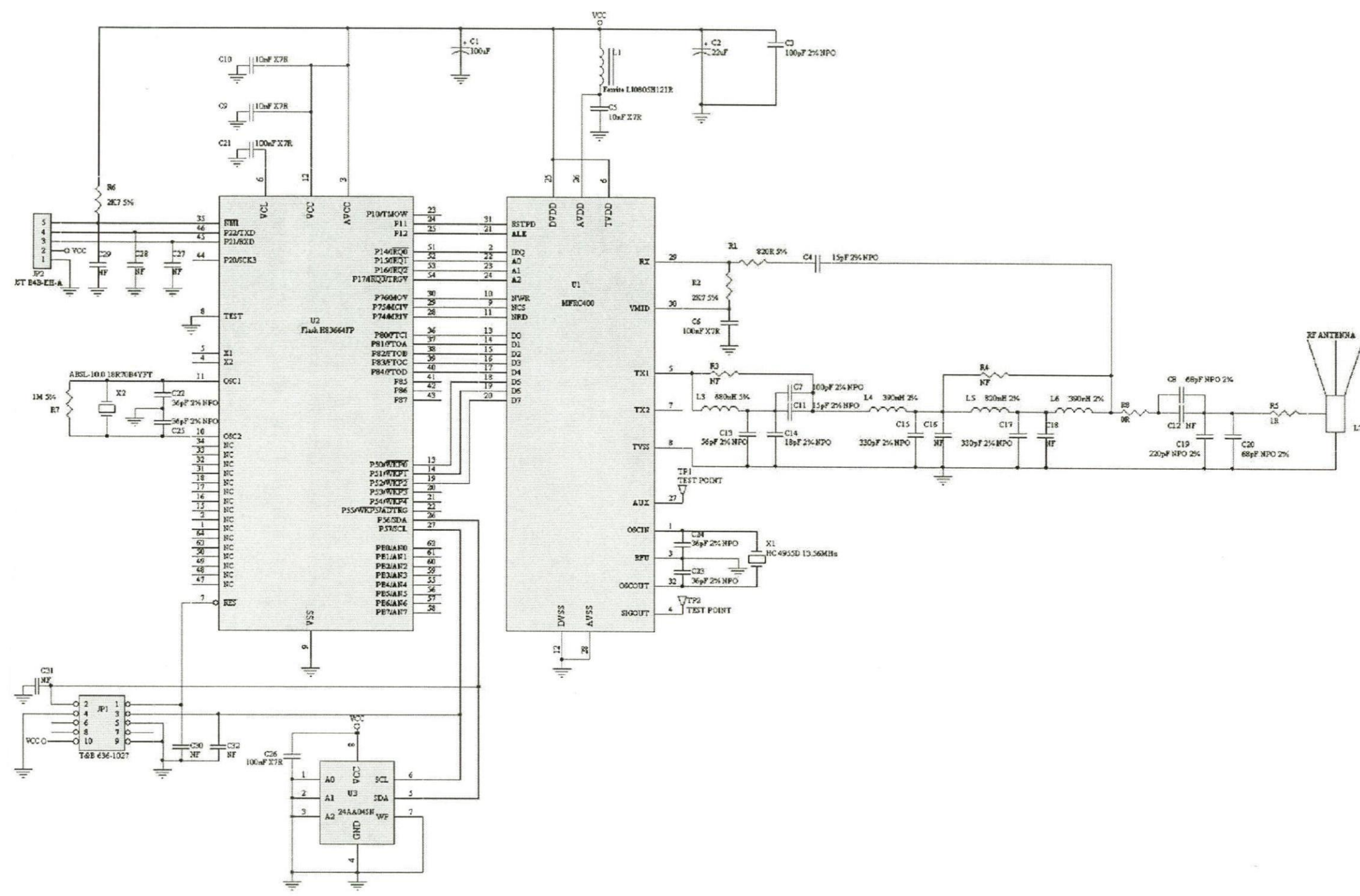
PROJECT:	ZEBRA TECHNOLOGIES CORP. 1001 FLYNN ROAD CAMPBELL, CA 95012
APPROVED:	
DATE:	
TITLE:	SCHMATIC
DRWNR:	J COOK
CHECKER:	
REV:	402332-000
SHEET:	1 OF 1

REV	DESCRIPTION	DATE	APPROVED

CONFIDENTIAL AND PROPRIETARY  
 © 2004 Zebra Corp. ALL RIGHTS RESERVED.  
 THE INFORMATION CONTAINED HEREIN IS THE CONFIDENTIAL AND PROPRIETARY  
 OF ZEBRA CORPORATION AND IS TO BE USED ONLY FOR THE INTERNAL USE  
 OF ZEBRA CORPORATION. IT IS NOT TO BE DISCLOSED TO ANY OTHER  
 PARTY WITHOUT THE WRITTEN PERMISSION OF ZEBRA CORPORATION.

CONFIDENTIAL AND PROPRIETARY  
 THE INFORMATION CONTAINED HEREIN IS THE CONFIDENTIAL AND THE EXCLUSIVE PROPERTY OF ZEBRA CORP. THIS DOCUMENT, AND THE INFORMATION CONTAINED HEREIN, SHALL NOT BE COPIED, REPRODUCED, DISSEMINATED, OR OTHERWISE MADE PUBLIC IN ANY MANNER, IN ANY MEDIUM, BY ANY MEANS, FOR ANY PURPOSE WITHOUT THE EXPRESS WRITTEN CONSENT OF ZEBRA CORP.  
 © ZEBRA CORP. 2005 ALL RIGHTS RESERVED

REVISIONS			
REV	DESCRIPTION	DATE	APPROVED
A	RFHS RELEASE, MADE FROM 402932-001 A02	08/15/05	

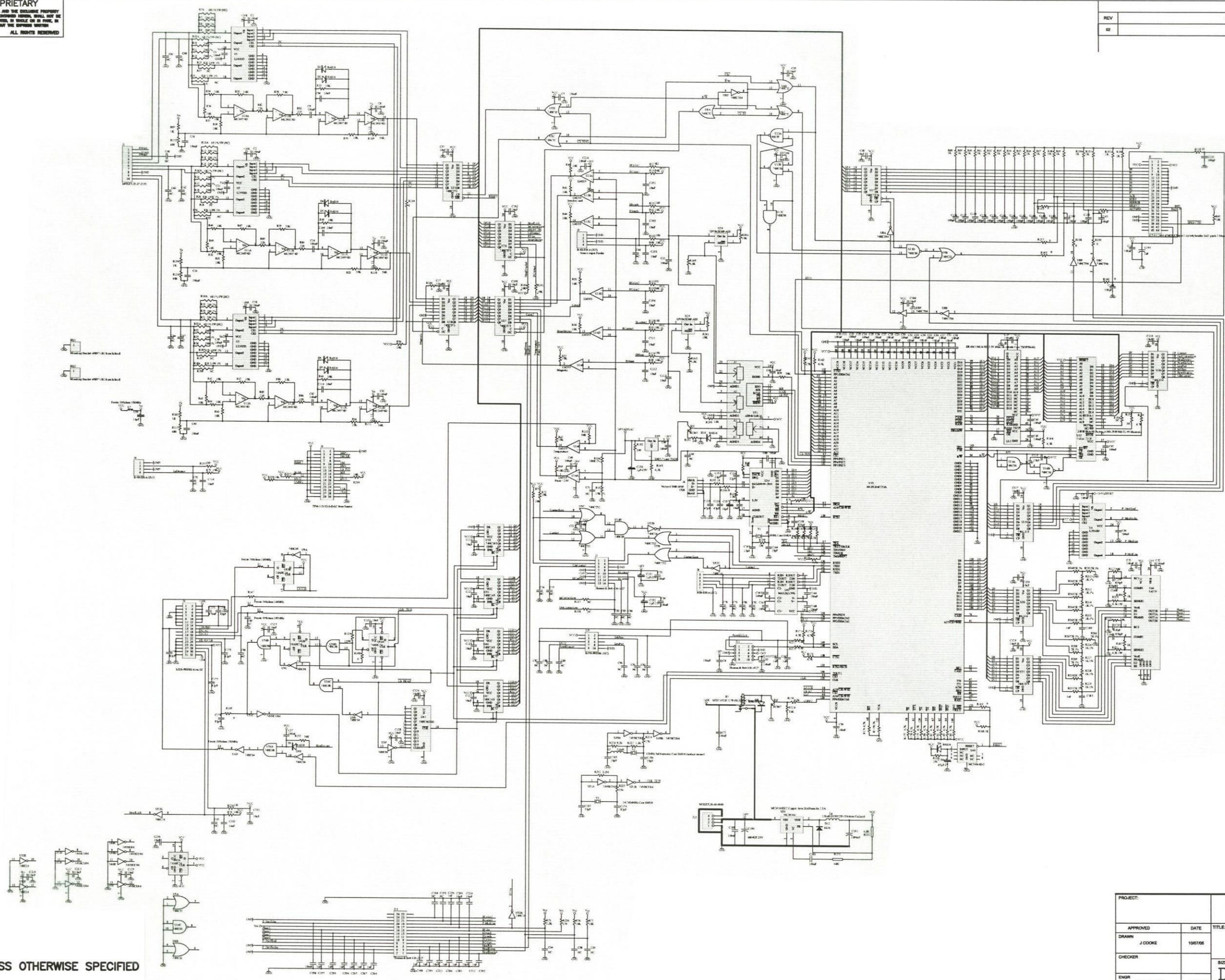


NOTES: UNLESS OTHERWISE SPECIFIED

PROJECT:		ZEBRA TECHNOLOGIES CORP. 1001 FLYNN ROAD CAMARILLO, CA 93012		ITEM STATUS: UNRELEASED
APPROVED:	DATE:	TITLE: SCHEMATIC P330i, RFID READER		
DRAWN: J COOKE	08/15/05	SIZE: D	DWG NO.: 402932-001	REV: A
CHECKER:		SCALE: NTS	SHEET 1 OF 1	
ENGR: BERNIE RYAN	08/15/05			

**CONFIDENTIAL AND PROPRIETARY**  
 THE INFORMATION CONTAINED HEREIN IS THE CONFIDENTIAL AND THE SOLE PROPERTY OF ZERBA CORP. THIS INFORMATION AND THE INFORMATION CONTAINED HEREIN SHALL NOT BE COPIED, REPRODUCED, PUBLISHED, DISPLAYED OR DISSEMINATED, IN WHOLE OR IN PART, IN ANY MANNER, BY ANY MEANS, FOR ANY PURPOSE WITHOUT THE EXPRESS WRITTEN CONSENT OF ZERBA CORP. © 2001 Corp. 2005 ALL RIGHTS RESERVED.

REVISIONS		DATE	APPROVED
REV	DESCRIPTION		
02		10/27/05	

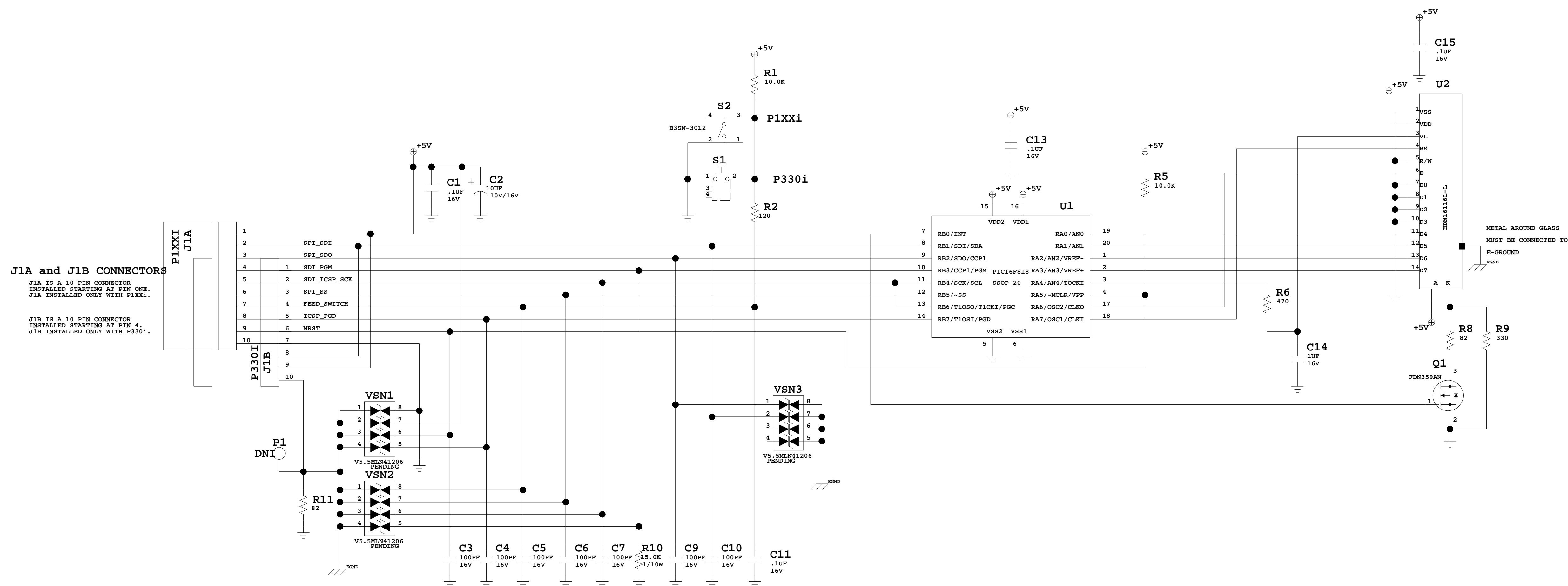


NOTES: UNLESS OTHERWISE SPECIFIED

PROJECT:		ZERBA TECHNOLOGIES CORP. 1001 FLYNN ROAD CAMARILLO, CA 93012		ITEM STATUS: UNRELEASED
APPROVED	DATE	TITLE		
J COOKE	10/27/05	SCHEMATIC P3301,CPU MAIN		
CHECKER		SIZE	DWG NO.:	REV.
ENGR	BERNE RYAN	D	402961-101	02
SCALE: NTS		SHEET		1 OF 1


REVISIONS

REV	DATE	ECO NO	DRAWN	DESCRIPTION	APPR
01	07-09-03		R.ROSE	PRELIMINARY DESIGN	JB
02	07-21-03		R.ROSE	PRELIMINARY DESIGN - CONNECTOR, JUMPER, CIRCUIT CHANGE	JB
03	07-22-03		R.ROSE	PRELIMINARY DESIGN - CHANGE RB3/RB6 FOR PWM.	JB
04	07-29-03		R.ROSE	ADD CAPS, ADD MICRODRIVER, CHANGE FET/BJT, COMP VALUES	JB
05	02-06-04		R.ROSE	ADD FALCON PUSHBUTTON, REMOVE DIODE, CHANGE C2	JB
06	6-09-04		R.ROSE	ADD ESD PROTECTION DEVICES.	
07					
08					
09	09/02/05		J COOKE	DOCUMENTATION CORRECTION ONLY	JB



**J1A and J1B CONNECTORS**  
 J1A IS A 10 PIN CONNECTOR  
 INSTALLED STARTING AT PIN ONE.  
 J1A INSTALLED ONLY WITH P1XXI.  
 J1B IS A 10 PIN CONNECTOR  
 INSTALLED STARTING AT PIN 4.  
 J1B INSTALLED ONLY WITH P330I.

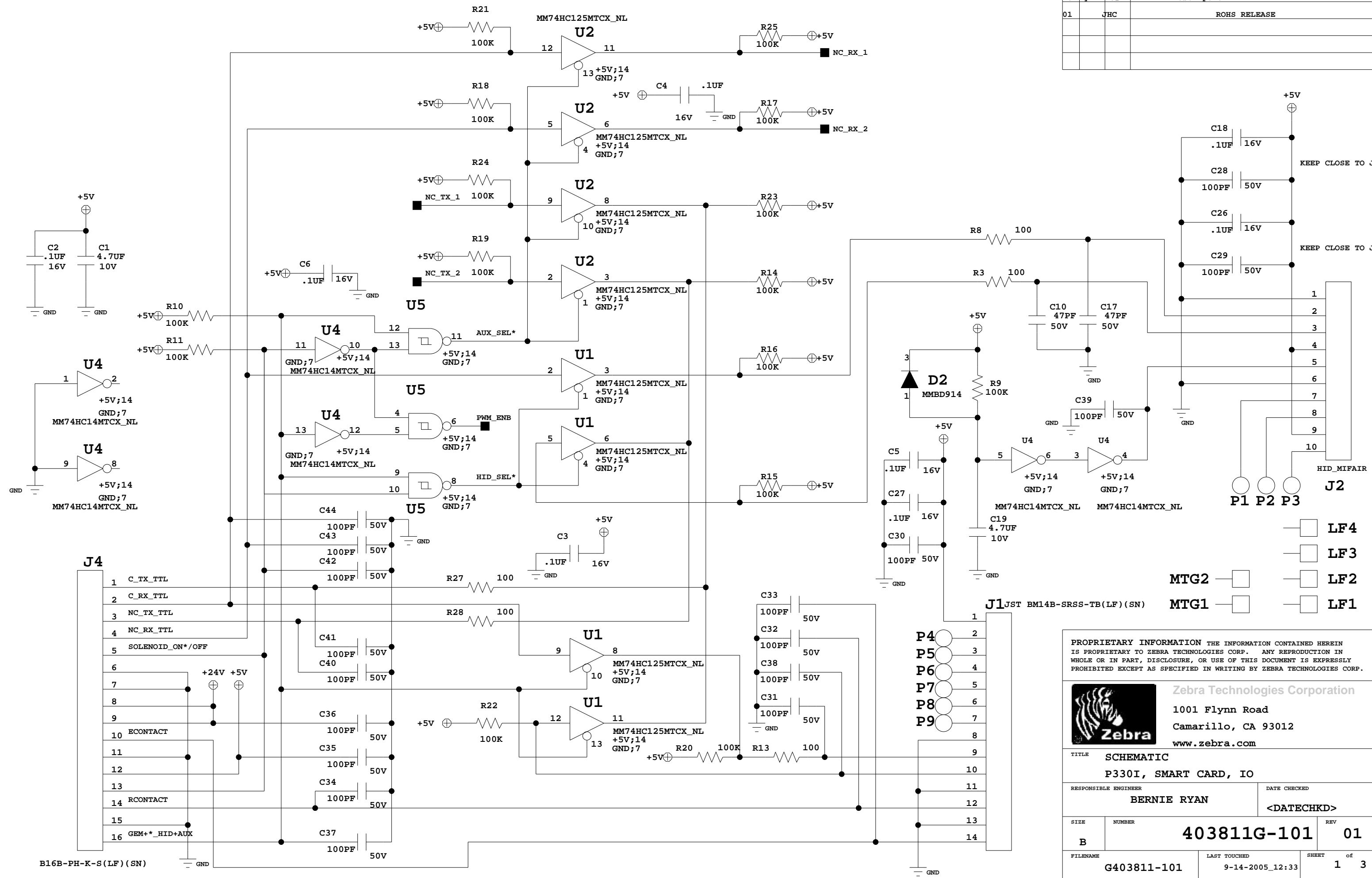
- NOTES:**
- LAYOUT NOTES:**
- INSTALL ALL COMPONENTS EXCEPT THOSE INDICATED WITH NU.
  - KEEP BYPASS CAPS CLOSE TO THE COMPONENTS THEY ARE ASSOCIATED WITH.
  - KEEP R5 CLOSE TO U1 PIN 4.
  - POUR COPPER TOP AND BOTTOM IN ALL FREE BOARD AREAS. AND ATTACH TO EARTH GROUND.
- PROGRAMMING NOTES:**
- ASSEMBLY NOTES:**
- OBSERVE J1A AND J1B MOUNTING CONFIGURATION.



**Zebra Technologies Corporation**

THESE DRAWINGS AND SPECIFICATIONS ARE THE EXCLUSIVE PROPERTY OF ZEBRA TECHNOLOGIES CORPORATION, AND ARE FURNISHED FOR EVALUATION ONLY ON A CONFIDENTIAL BASIS, AND SHALL NOT BE DISCLOSED, REPRODUCED, COPIED, OR USED FOR ANY PURPOSE WHATSOEVER, EXCEPT WITH THE PRIOR WRITTEN CONSENT OF ZEBRA TECHNOLOGIES CORPORATION	DRAWN: R.ROSE DATE: 9-2-2005_11:10 ENGR: R.ROSE APPR: XXXXX FIRST USE: P120/110	TITLE: <b>LCD-MODULE &amp; FEED SW.</b> DWG SIZE: D DWG NO: <b>403411-101</b> REV: <b>09</b> SHEET 1 OF 1
--	---	---

Rev By	EO#	Description
01	JHC	ROHS RELEASE



- LF4
- LF3
- LF2
- LF1
- MTG2
- MTG1

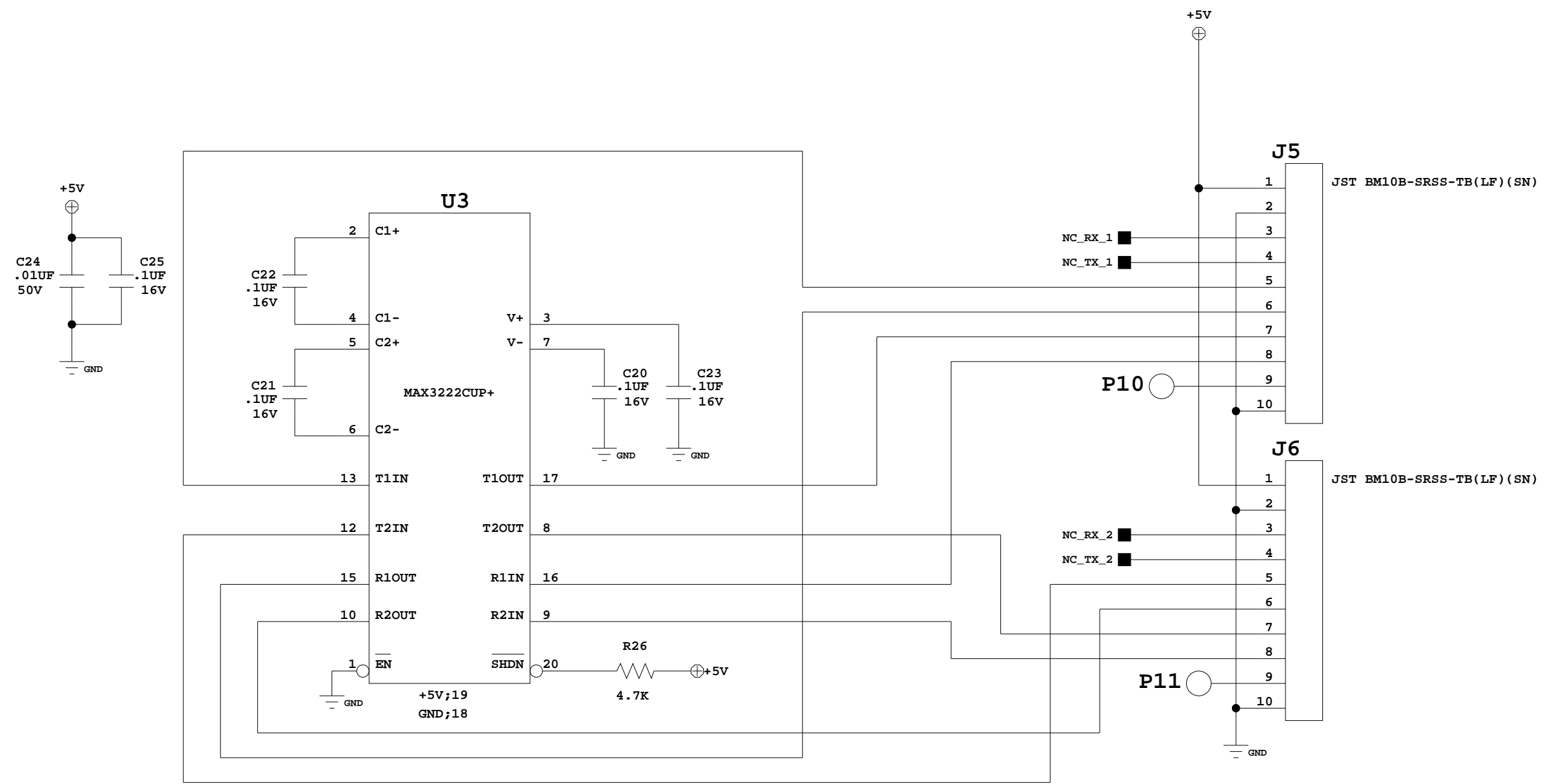
PROPRIETARY INFORMATION THE INFORMATION CONTAINED HEREIN IS PROPRIETARY TO ZEBRA TECHNOLOGIES CORP. ANY REPRODUCTION IN WHOLE OR IN PART, DISCLOSURE, OR USE OF THIS DOCUMENT IS EXPRESSLY PROHIBITED EXCEPT AS SPECIFIED IN WRITING BY ZEBRA TECHNOLOGIES CORP.



**Zebra Technologies Corporation**  
 1001 Flynn Road  
 Camarillo, CA 93012  
 www.zebra.com

TITLE <b>SCHEMATIC</b>		
P330I, SMART CARD, IO		
RESPONSIBLE ENGINEER <b>BERNIE RYAN</b>	DATE CHECKED <b>&lt;DATECHKD&gt;</b>	
SIZE <b>B</b>	NUMBER <b>403811G-101</b>	REV <b>01</b>
FILENAME <b>G403811-101</b>	LAST TOUCHED <b>9-14-2005_12:33</b>	SHEET of <b>1 3</b>

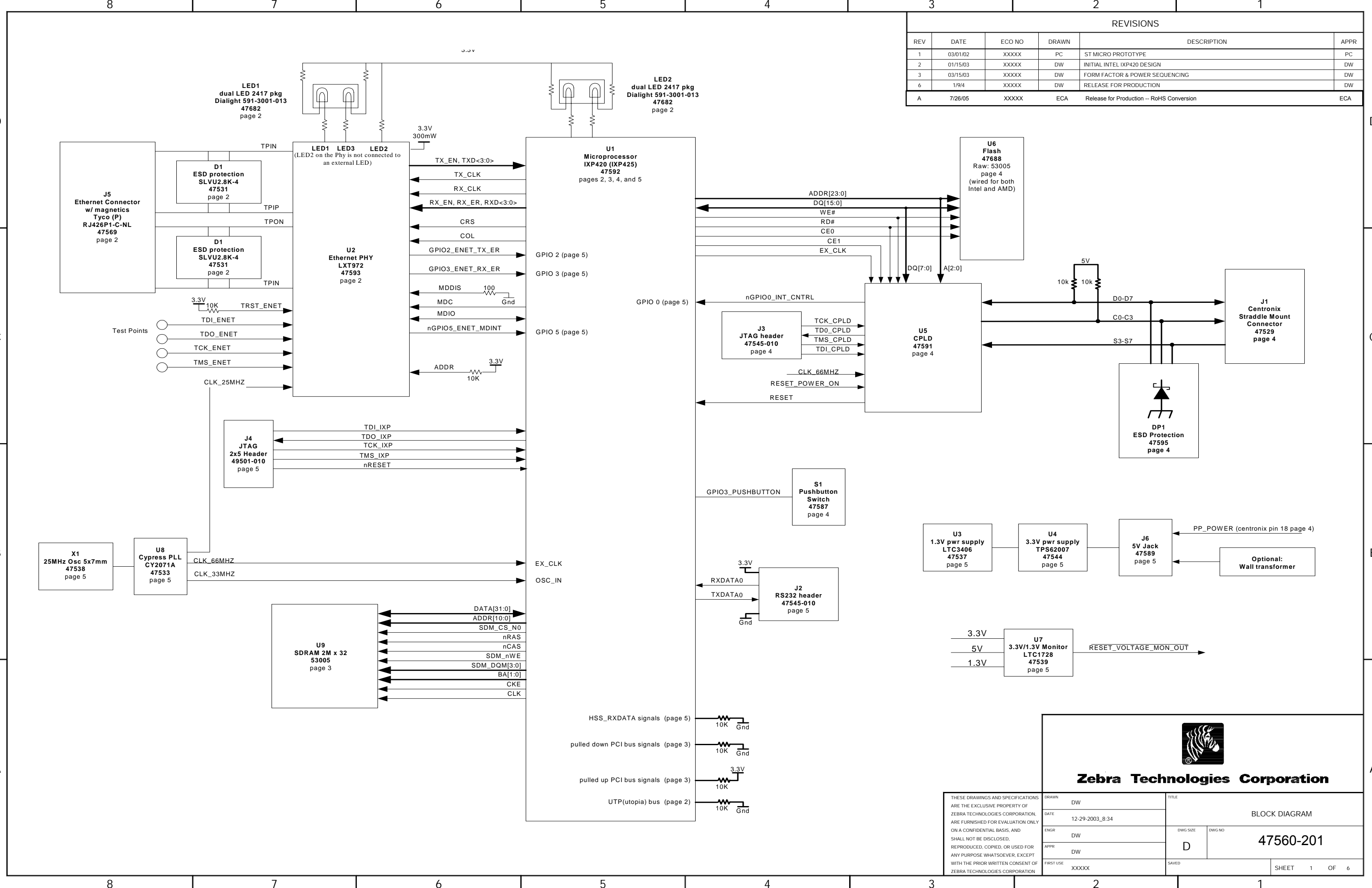
B16B-PH-K-S(LF)(SN)




TITLE				<b>SCHEMATIC</b>			
				<b>P330I, SMART CARD, IO</b>			
RESPONSIBLE ENGINEER				DATE CHECKED			
<b>BERNIE RYAN</b>							
SIZE	NUMBER			REV			
<b>B</b>	<b>403811G-101</b>			<b>01</b>			
FILENAME		LAST TOUCHED		SHEET		of	
<b>G403811-101</b>		<b>9-14-2005_12:32</b>		<b>2</b>		<b>3</b>	



REVISIONS					
REV	DATE	ECO NO	DRAWN	DESCRIPTION	APPR
1	03/01/02	XXXXX	PC	ST MICRO PROTOTYPE	PC
2	01/15/03	XXXXX	DW	INITIAL INTEL IXP420 DESIGN	DW
3	03/15/03	XXXXX	DW	FORM FACTOR & POWER SEQUENCING	DW
6	1/9/4	XXXXX	DW	RELEASE FOR PRODUCTION	DW
A	7/26/05	XXXXX	ECA	Release for Production - RoHS Conversion	ECA





**Zebra Technologies Corporation**

<p>THESE DRAWINGS AND SPECIFICATIONS ARE THE EXCLUSIVE PROPERTY OF ZEBRA TECHNOLOGIES CORPORATION, ARE FURNISHED FOR EVALUATION ONLY ON A CONFIDENTIAL BASIS, AND SHALL NOT BE DISCLOSED, REPRODUCED, COPIED, OR USED FOR ANY PURPOSE WHATSOEVER, EXCEPT WITH THE PRIOR WRITTEN CONSENT OF ZEBRA TECHNOLOGIES CORPORATION.</p>	<table border="1" style="width: 100%; border-collapse: collapse;"> <tr> <td>DRAWN</td> <td>DW</td> <td>TITLE</td> <td colspan="2">BLOCK DIAGRAM</td> </tr> <tr> <td>DATE</td> <td>12-29-2003_8:34</td> <td>DWG SIZE</td> <td>DWG NO</td> <td rowspan="2" style="text-align: center; font-size: 1.2em;"><b>47560-201</b></td> </tr> <tr> <td>ENGR</td> <td>DW</td> <td>APPR</td> <td>D</td> </tr> <tr> <td>FIRST USE</td> <td>XXXXX</td> <td>SAVED</td> <td colspan="2">SHEET 1 OF 6</td> </tr> </table>	DRAWN	DW	TITLE	BLOCK DIAGRAM		DATE	12-29-2003_8:34	DWG SIZE	DWG NO	<b>47560-201</b>	ENGR	DW	APPR	D	FIRST USE	XXXXX	SAVED	SHEET 1 OF 6	
DRAWN	DW	TITLE	BLOCK DIAGRAM																	
DATE	12-29-2003_8:34	DWG SIZE	DWG NO	<b>47560-201</b>																
ENGR	DW	APPR	D																	
FIRST USE	XXXXX	SAVED	SHEET 1 OF 6																	

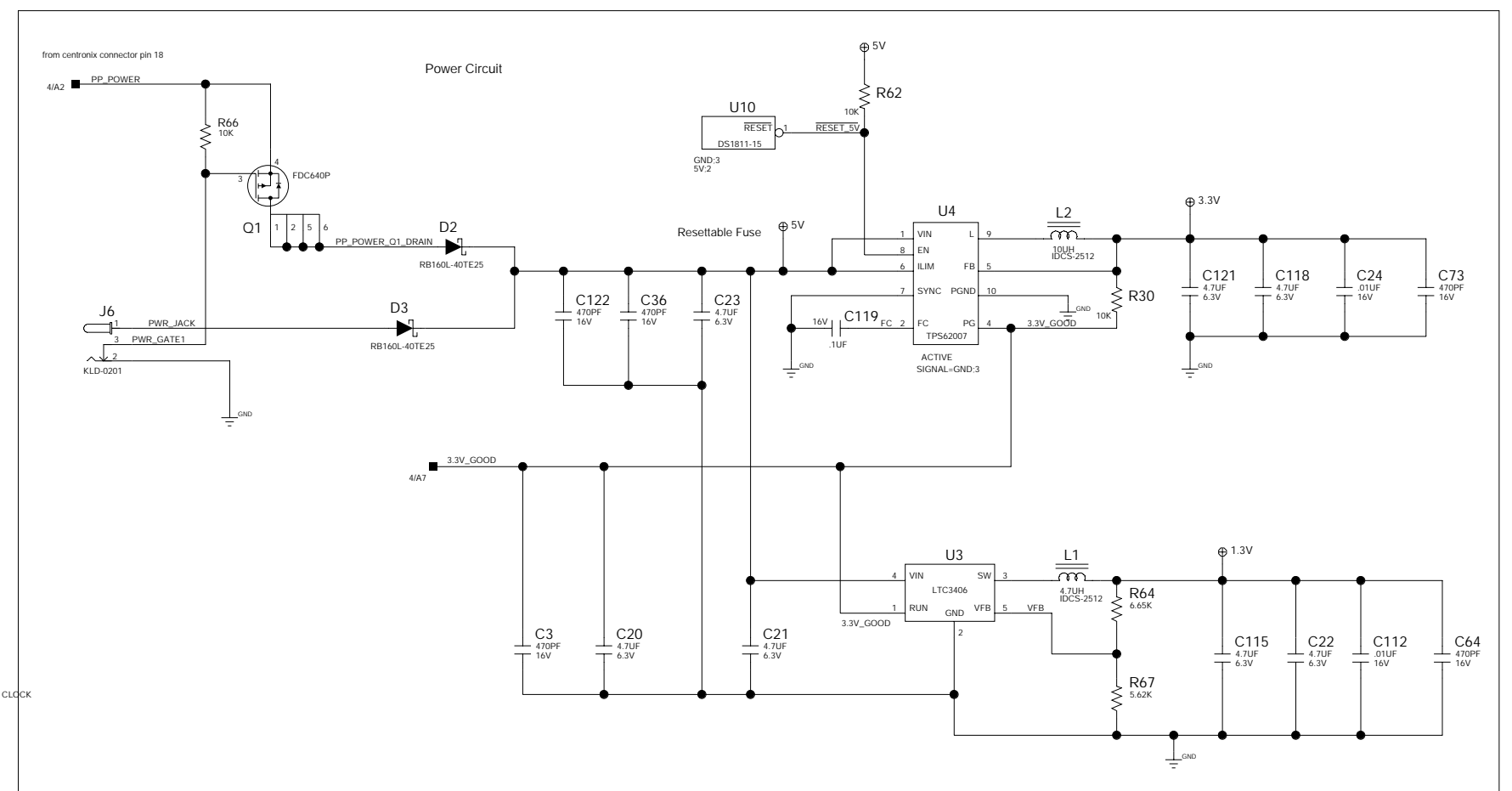
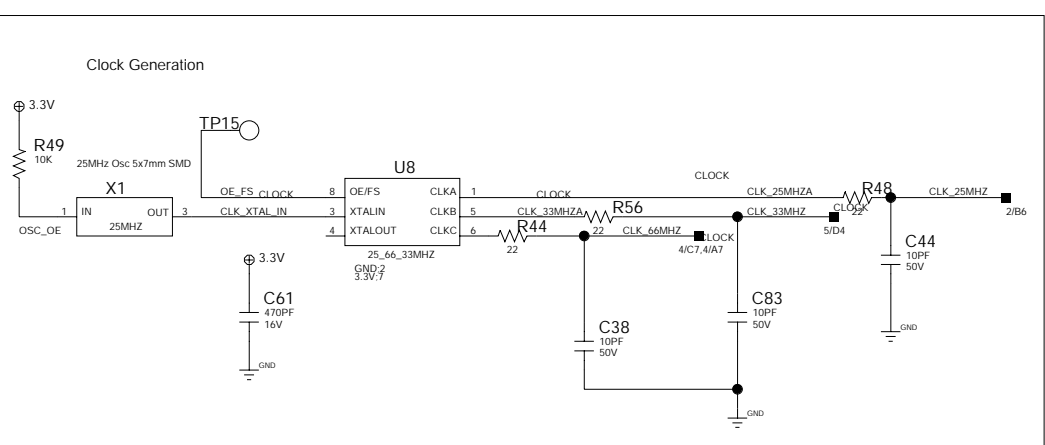
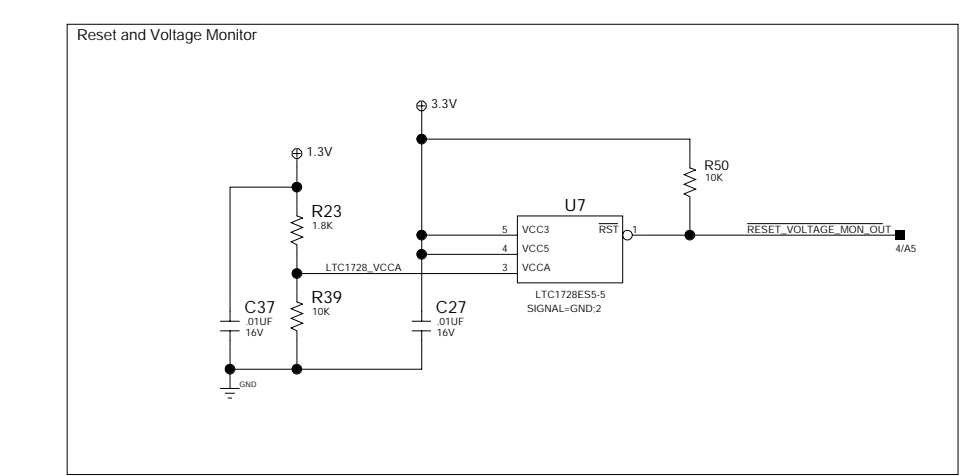
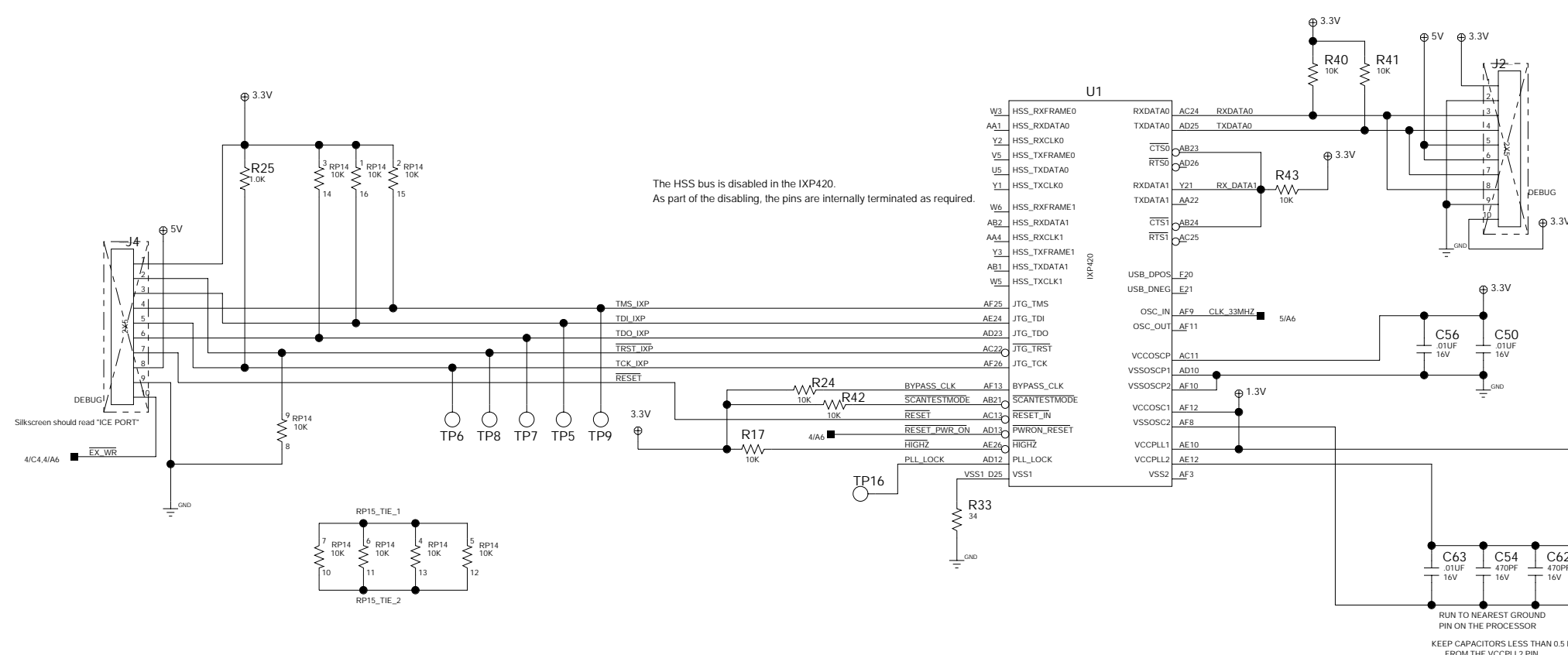






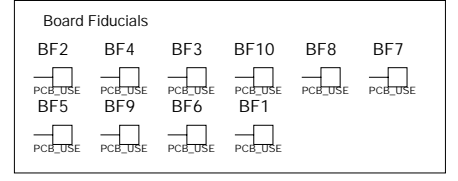
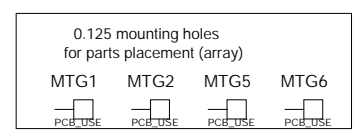
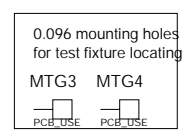
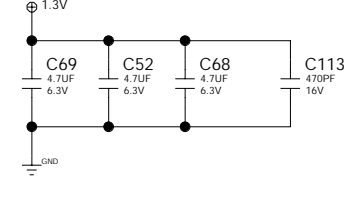
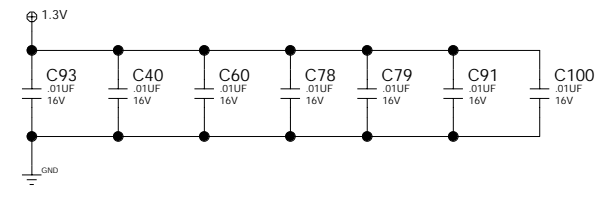
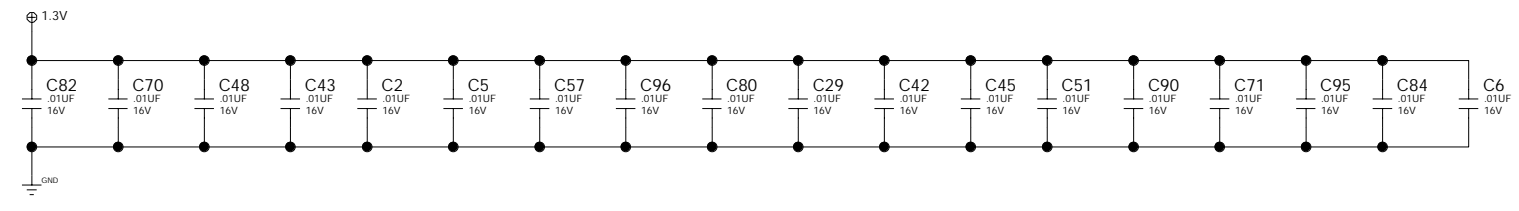
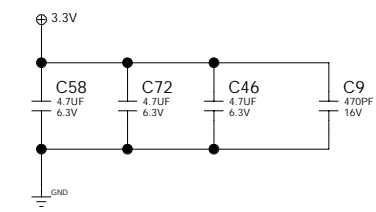
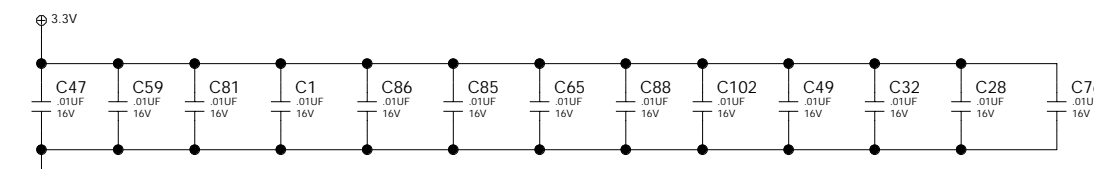
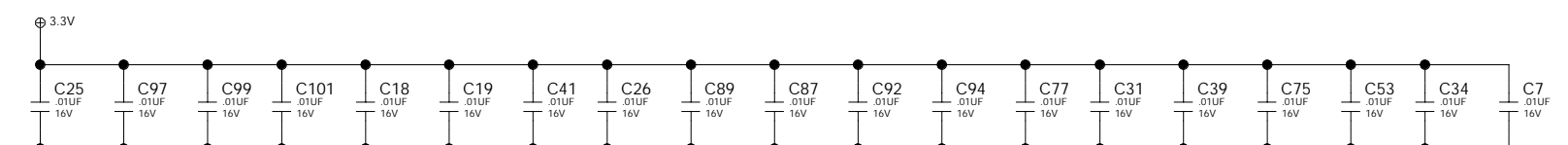
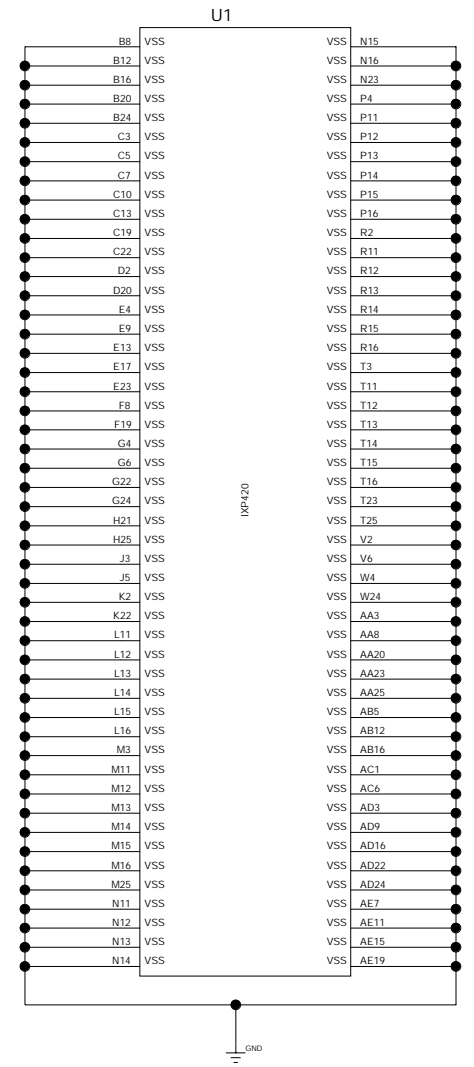
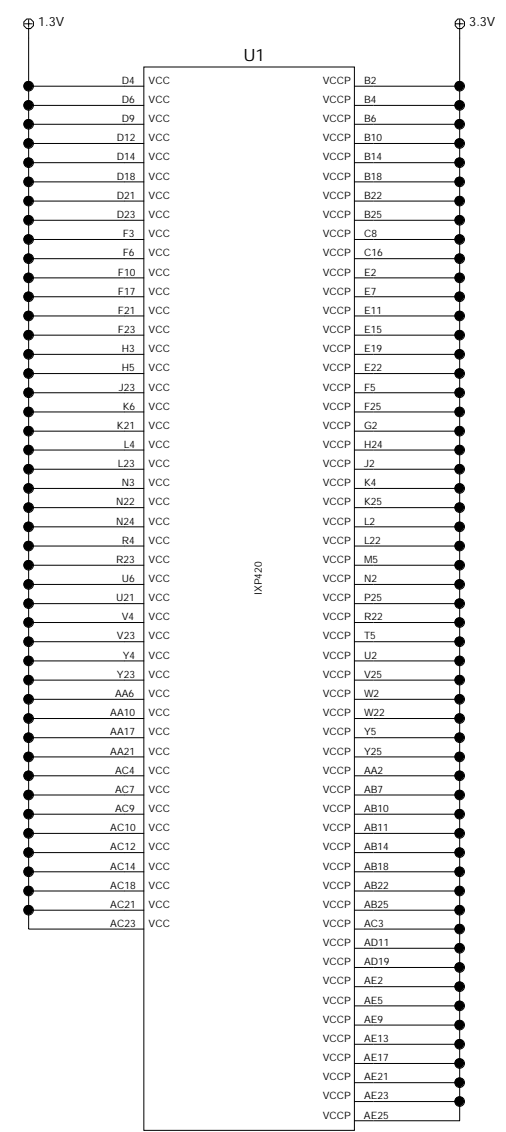


REVISIONS					
REV	DATE	ECO NO	DRAWN	DESCRIPTION	APPR
1	03/01/02	XXXXX	PC	ST MICRO PROTOTYPE	PC
2	01/15/03	XXXXX	DW	INITIAL INTEL IXP420 DESIGN	DW
3	03/15/03	XXXXX	DW	FORM FACTOR & POWER SEQUENCING	DW
6	1/9/4	XXXXX	DW	RELEASE FOR PRODUCTION	DW
A	7/26/05	XXXXX	ECA	Release for Production - RoHS Conversion	ECA



TITLE		POWER, CLOCKS, MICRO JTAG, MICRO SERIAL
DWG SIZE	DWG NO	47560-201
SAVED	SHEET	5 OF 6

REVISIONS					
REV	DATE	ECO NO	DRAWN	DESCRIPTION	APPR
1	03/01/02	XXXXX	PC	ST MICRO PROTOTYPE	PC
2	01/15/03	XXXXX	DW	INITIAL INTEL IXP420 DESIGN	DW
3	03/15/03	XXXXX	DW	FORM FACTOR & POWER SEQUENCING	DW
6	1/9/4	XXXXX	DW	RELEASE FOR PRODUCTION	DW
A	7/26/05	XXXXX	ECA	Release for Production - RoHS Conversion	ECA



TITLE		MICRO POWER & GROUND	
DWG SIZE	DWG NO	47560-201	
D			
SAVED	SHEET 6 OF 6		