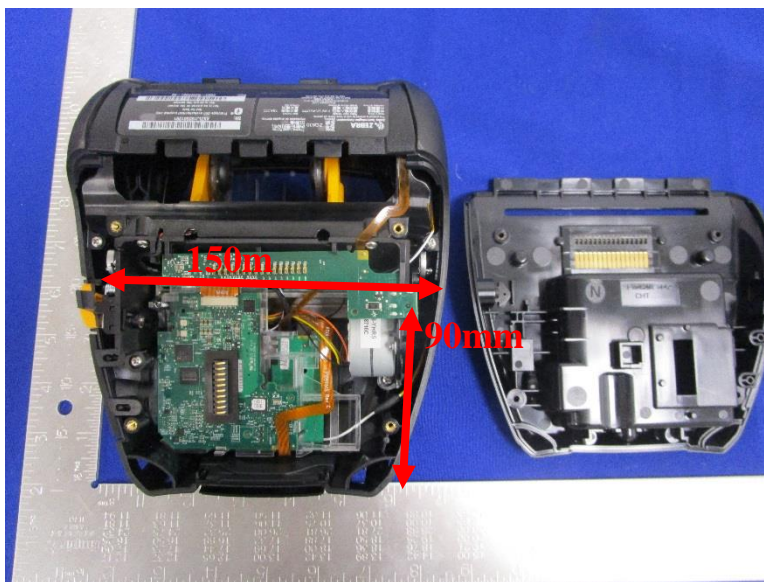


Setup and Test Configuration Consideration

WLAN Antenna Location

WLAN Antenna Location



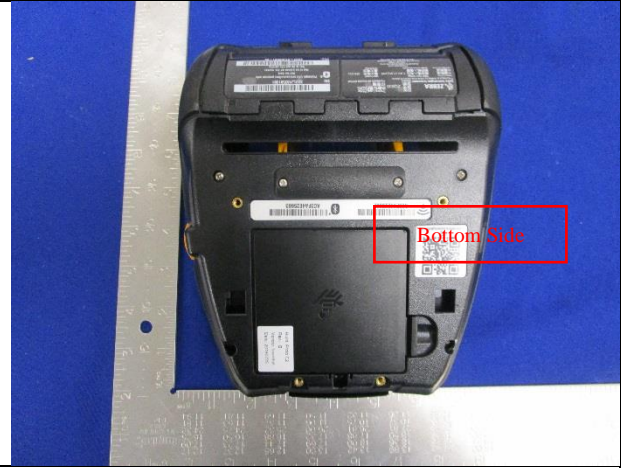
Remark:

SAR is not required because the distance from the antenna to the edge is > 25 mm as per KDB 941225 D06 Hotspot Mode SAR. So Rear side is not required.

EUT Test Position for WLAN SAR



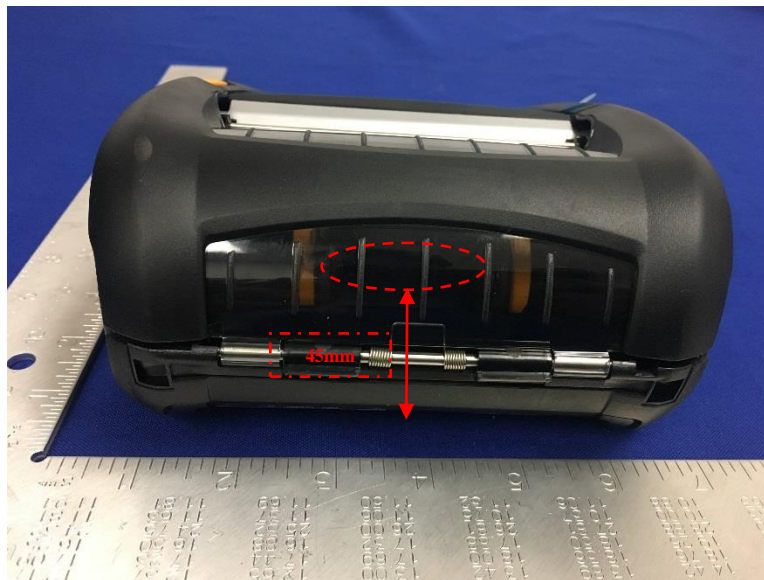
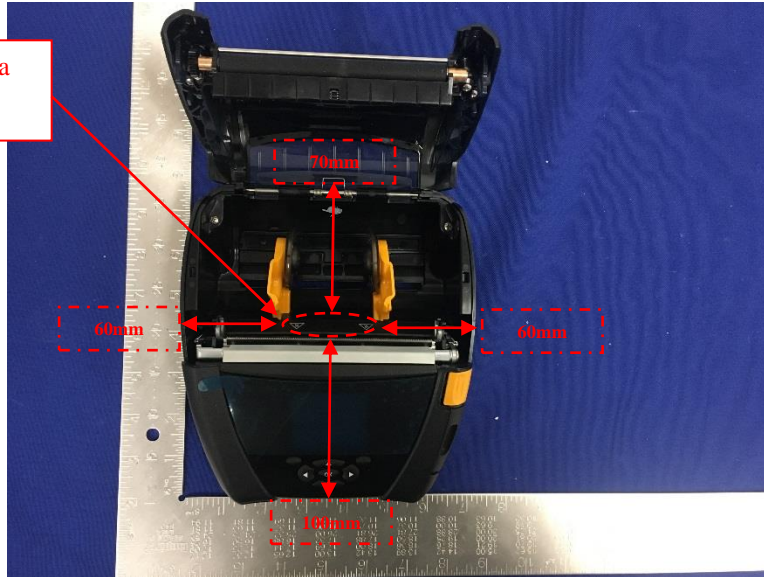
Test Position definition 1



Test Position definition 2

RFID Antenna Location

RFID Antenna Location



Remark:

SAR is not required because the distance from the antenna to the edge is > 25 mm as per KDB 941225 D06 Hotspot Mode SAR. So Rear side is not required.

EUT Test Position for RFID SAR

Test Location



Test Position