



WESTERN MULTIPLEX CORPORATION

Installation and Maintenance Manual

TsunamiTM

Multipoint

Revisions:

September 2001

Draft

October

FCC submittal

WESTERN MULTIPLEX CORPORATION

Tsunami Point-to-Multipoint

© 2001

Western Multiplex Corporation
1196 Borregas Avenue
Sunnyvale, California 94089 USA
Phone +1 408 542 5200 • Fax +1 408 542 5300

<http://www.wmux.com>

<ftp://ftp.wmux.com/products/>

Table of Contents

1. INTRODUCTION.....	1-1
PRODUCT HIGHLIGHTS.....	1-2
KEY FEATURES.....	1-3
HOW TO USE THIS MANUAL.....	1-3
SAFETY INSTRUCTIONS.....	1-4
2. SYSTEM OVERVIEW	2-1
SITE PLANNING CONSIDERATIONS.....	2-2
General Considerations.....	2-2
Weather.....	2-3
Antennas.....	2-5
Path Planning.....	2-6
WIRELESS: FREQUENTLY ASKED QUESTIONS.....	ERROR! BOOKMARK NOT DEFINED.
3. QUICK SET-UP PROCEDURE.....	3-1
Important Configuration Notes.....	3-1
Unpacking the System.....	3-1
SOFTWARE INSTALLATION.....	3-4
HUB SITE EQUIPMENT CONFIGURATION (BSU).....	3-5
SUBSCRIBER UNIT CONFIGURATION.....	3-8
Mechanical Considerations – Mounting Units.....	3-9
4. SPECIFICATIONS	4-11
SYSTEM.....	4-11
STANDARDS COMPLIANCE AND INTERFACES.....	4-12
CONFIGURATION AND MANAGEMENT.....	4-12
POWER /ENVIRONMENT /SAFETY.....	4-12
PHYSICAL DIMENSIONS	4-13
MOUNTING (INSTALLATION).....	4-13

Figures

FIGURE 1-1-1: PROPER EARTHING/GROUNDING	1-5
FIGURE 2-2-1: EACH HUB IS MADE UP OF ONE TO SIX BASE STATIONS AND MULTIPLE REMOTES(SUS)	2-1
FIGURE 3-3-1: SUBSCRIBER UNIT	3-3
FIGURE 3-2 SUBSCRIBER ODU	3-9
FIGURE 3-3: BASE STATION ODU	3-10

1. Introduction

Tsunami Multipoint is a point-to-multipoint outdoor wireless system offering a high-capacity alternative to wired data networks. Using IP packet radio transmitters, standard Ethernet interfaces, and an easy to-deploy design, the Tsunami Multipoint system enables high-speed network connections to multiple Ethernet switches, routers or PCs from a single location. With Tsunami Multipoint, you can now avoid the delays and costs associated with wired connections such as DSL, cable modems, and leased T I /E I lines. Tsunami Multipoint eliminates wire/fiber installation costs and recurring monthly fees - delivering carrier-class performance at an affordable price.

Tsunami Multipoint systems consist of one or more Subscriber Units that communicate with a Base Station to provide high-performance wireless network connections.

EXTEND OR ENHANCE YOUR NETWORK OVERNIGHT

With Tsunami Multipoint, there are no DSL, cable, or leased-line hassles to negotiate. You no longer have to worry about man-made barriers to overcome. Easy installation and operation allow network planners to quickly deploy up to 60 Mbps capacity between locations, making it the ideal solution for:

- Establishing high-speed connections between Internet Service Providers and their customers
- Organizations requiring high-capacity WAN connectivity between multiple buildings or campuses
- Organizations or service providers seeking network redundancy for mission critical wired connections

ABOUT THE TSUNAMI PRODUCT FAMILY

The Tsunami family of Ethernet bridges provides wireless solutions that meet the growing demand for transparent and reliable high-speed network interconnectivity.

In addition to Tsunami Multipoint for point-to-multipoint connections, the Tsunami product line includes the following point-to-point offerings:

Tsunami 10BaseT, a cost-effective, high-capacity alternative to multiple wireline T1 connections.

Tsunami 100BaseT/F, a cost-effective, high-capacity alternative to wireline DS3 connections.

Tsunami 1000BaseSX, the world's first Ethernet bridge to provide gigabit, wireless connectivity for native IP connections.

PRODUCT HIGHLIGHTS

UP TO 360 MBPS PER HUB SITE

- Speeds from 20 Mbps to 60 Mbps Time Division Duplex (TDD) per Base Station for optimal network efficiency
- Configurable upstream/downstream bandwidth to optimize desired throughput
- Six Base Stations provide 360 degree coverage, delivering up to 360 Mbps per hub site

FAST AND EASY TO DEPLOY & MANAGE

- Subscriber Unit simplicity enables self installation to minimize deployment costs
- Audible beeper alignment eases installation
- Subscriber Unit with integrated antenna connects to indoor power & networks using a single CAT5 cable
- "Over the air" software upgrades minimize subscriber unit maintenance costs

RAPID RETURN ON INVESTMENT

- Rapid, easy deployment enables quick service activation, reduced costs and faster payback
- High-capacity connection enables faster network traffic to deliver new service offerings


PURE ETHERNET CONNECTIVITY


- Operates in either Ethernet bridging or IP routing modes with direct connections to PCs, Fast Ethernet switches & routers
- Support for VLAN tagging

KEY FEATURES

- Flexible throughput rates: 20, 30, 40, & 60 Mbps TDD
- 5.8 GHz license-exempt frequency band
- Compliant with industry standards
- Base Station provides 60 degree antenna - six Base Stations cover 360 degrees
- Network management through SNMP & Java-based "Wireless Manager" software
- Point-to-multi point communications from less than 1 mile/kilometer to more than 8 miles/ 13 kilometers


I C O N K E Y

 Information

 Suggestion

 Caution

 Note

 Write this down

How to Use This Manual

The “icon key” at left will be used to “highlight” specific text to call particular attention to it. Where specific emphasis needs to be placed, these icons will direct you to other information or particular areas where additional information can be found.

Safety Instructions

IMPORTANT

This product has been evaluated to the U.S. and Canadian (Bi-National) Standard for Safety of Information Technology Equipment, Including Electrical Business Equipment, CAN/CSA C22.2, No. 950-95 * UL 1950, Third Edition, including revisions through revision date March 1, 1998, which are based on the Fourth Amendment to IEC950, Second Edition. In addition, this product was also evaluated to the applicable requirements in UL 1950, Annex NAE.

WARNING - This unit is intended for installation in a Restricted Access location in accordance with Articles 110-18, 110- 26, and 110-27 of the United States National Electric Code ANSI/NFPA 70.

This equipment should be installed in accordance with Article 810 of the United States National Electrical Code.

When installed, this equipment is intended to be connected to a Lightning/Surge Protection Device that meets all applicable national Safety requirements.

Equipment is to be used and powered by the type of power source indicated on the marking label only.

This product is intended to be connected to an AC power source which must be electrically isolated from any ac sources and reliably earthed. Only an AC power source that complies with the requirements in the Standard for the Safety of Information Technology Equipment, Including Electrical Business Equipment, CAN/CSA C22.2, No. 950-95 * UL 1950, Third Edition, can be used with this product. A 15-Amp circuit breaker is required at the power source. In addition, an easily accessible disconnect device should be incorporated into the facility wiring. Always use copper conductors only for all power connections.

WARNING - This equipment is intended to be earthed. If you are not using the power supply provided by Western Multiplex, you will need to connect the earthing conductor of your power source to the earthing terminal located on the back of the unit; or, connect an earthing conductor between the unit's earthing terminal and your earthing point. See Ill. for instructions. For safe operation, always ensure that the unit is earthed properly as described in this manual and per Figure 1-1.

Do not connect or disconnect the power cable to the equipment when the other end of the cable is connected to the dc power supply.

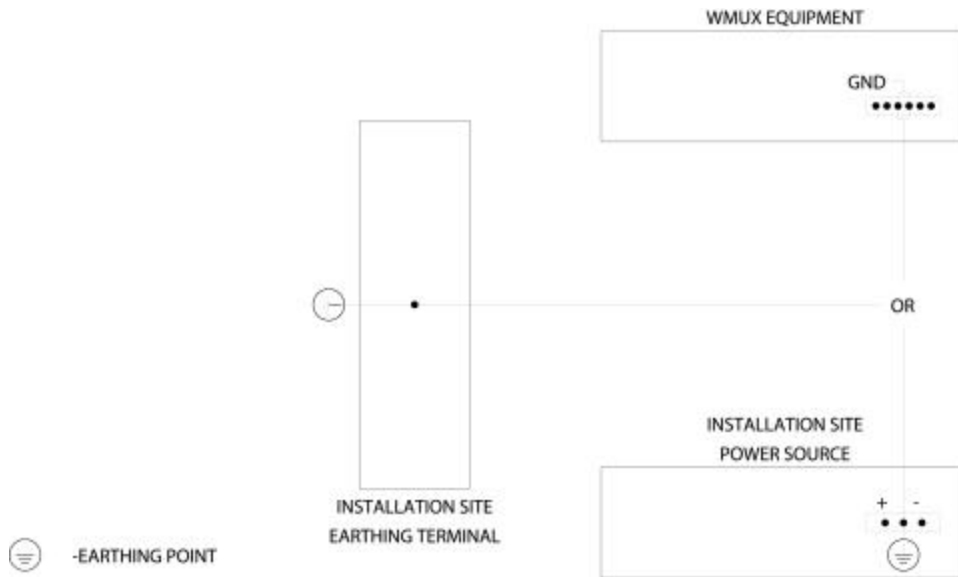


Figure 1-1-1: Proper Earthing/Grounding

Servicing of this product should be performed by trained personnel only. Do not disassemble this product. By opening or removing any covers you may expose yourself to hazardous energy parts. Incorrect re-assembly of this product can cause a malfunction, and/or electrical shock when the unit is subsequently used.

Do not insert any objects of any shape or size inside this product while powered. Objects may contact hazardous energy parts that could result in a risk of fire or personal injury.

NOTE:

This equipment has been tested and found to comply with the limits for a Class B digital device, pursuant to Part 15 of the FCC Rules. These limits are designed to provide reasonable protection against harmful interference in a residential installation. This equipment generates, uses and can radiate radio frequency energy and, if not installed and used in accordance with the instructions, may cause harmful interference to radio communications. However, there is no guarantee that interference will not occur in a particular installation. If this equipment does cause harmful interference to radio or television reception, which can be determined by turning the equipment off and on, the user is encouraged to try to correct the interference by one or more of the following measures:

- Reorient or relocate the receiving antenna.
- Increase the separation between the equipment and receiver.
- Connect the equipment into an outlet on a circuit different from that to which the receiver is connected.
- Consult the dealer or an experienced radio/TV technician for help.

CAUTION

The outdoor units of the Tsunami Multipoint products must be fixed mounted on permanent structures with a separation distance of at least 1.5 meters from all persons during normal operation.

CAUTION:

Changes or modifications not expressly approved by the party responsible for compliance could void the user's authority to operate the equipment

2. System Overview

A system is made up of one to six Base Stations that make up a Hub (or cell) with each Base Station communicating with their associated SUs (Subscriber Units). Together, they provide a wide coverage, high-capacity system that transfers IP traffic between the Hub and its multiple SUs. Each Hub has the ability to communicate in all directions using up to six sectors of 60 degrees each. Each of the Hub's six sectors has the capability of communicating 20, 30, 40 or 60 Mbps in total bandwidth allowing a maximum of 360 Mbps per Hub.

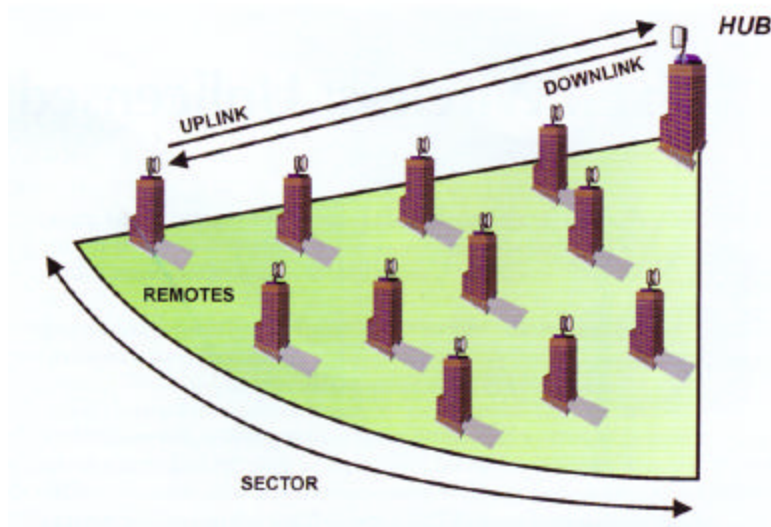


Figure 2-2-1: Each HUB is made up of one to six Base Stations and multiple remotes(SUs)

Uplink and Downlink, each SU communicates with its Hub in a coordinated manner so that all other remotes within its Hub's jurisdiction. All SUs are very quickly handled on a case by case basis giving the user at the SU that they are in constant communication with its Hub's Sector.

Site Planning Considerations

The installation of a wireless network requires much the same basic planning as any wired network. The main difference is that the wireless signal requires some additional planning. This planning includes RF path planning, site preparation, and installation of outdoor components such as outdoor units, antennas, lightning protection devices, and cabling suitable for outdoor conditions.

Although the technology implemented in this broadband fixed wireless system can make use of multipath signals, reducing the effect of obstructions in the path, it is important that the characteristics of the path be carefully examined. With this knowledge, components and network requirements can be correctly planned for your specific application.

This chapter provides insight into the planning necessary to prepare your site for your broadband fixed wireless system.

General Considerations

A basic consideration is the physical location of the sites at each end of the link. Because microwave signals travel in a straight line, a clear line of sight between antennas is ideal. Frequently, however, the locations of the desired links are fixed. When a clear line of sight cannot be achieved, you must plan accordingly.

Other general site considerations include:

- a. Will a tower have to be constructed? Are permits required?
- b. Possibility of future obstructions-Will trees grow high enough to interfere with the signal? Are there plans to erect buildings between the sites that may obstruct the path?
- c. Availability of grounding-Good grounding is important in all areas of the world, but in areas prone to lightning, it is especially critical.
- d. Availability of power-Are redundant power systems available if the area is prone to outages?

The planning of a wireless link involves collecting information and making decisions. The following sections will help you determine which information is critical to the site and will be an aid in the decision-making process.

Weather

It is important to research any unusual weather conditions that are common to the site location. These conditions can include excessive amounts of rain, wind velocity or extreme temperature ranges. If extreme conditions exist that may affect the integrity of the radio link, it is recommended that these conditions be taken into consideration early in the planning process.

RAIN

Except in extreme conditions, attenuation (weakening of the signal) due to rain does not require serious consideration for frequencies up to the range of 6 or 8 GHz. When microwave frequencies are at 10 or 12 GHz or above, attenuation due to rain becomes much more of a concern, especially in areas where rainfall is of high density and long duration. The systems discussed in this manual operate at frequencies below 6 GHz, so rain is not a concern.

Temperature can adversely affect the radio link when such as temperature inversion, or very still air accompanied by stratification. Temperature inversion can negate clearances, and still air along with stratification can cause severe refractive or reflective conditions, with unpredictable results. Temperature inversions and stratification can also cause ducting, which may increase the potential for interference between systems that do not normally interfere with each other. Where these conditions exist, it is recommended that shorter paths and adequate clearances are used.

WIND

Any system components mounted outdoors will be subject to the effect of wind. It is important to know the direction and velocity of the wind common to the site. Antennas and their supporting structures must be able to prevent these forces from affecting the antenna or causing damage to the building or tower on which the components are mounted. Antenna designs react differently to wind forces, depending on the area presented to the wind. This is known as wind loading.

Note For definitions of wind loading specifications for antennas and towers, refer to TIA/EIA-195 (for antennas) or TIA/EIA-222 (for towers) specifications.

LIGHTNING

The potential for lightning damage to radio equipment should always be considered when planning a wireless link. A variety of lightning protection and grounding devices are available for use on buildings, towers, antennas, cables, and equipment, whether located inside or outside the site, that could be damaged by a lightning strike.

Lightning protection requirements are based on the exposure at the site, the cost of link down-time, and local building and electrical codes. If the link is critical, and the

site is in an active lightning area, attention to thorough lightning protection and grounding is critical.

LIGHTNING PROTECTION

To provide effective lightning protection, install antennas in locations that are unlikely to receive direct lightning strikes, or install lightning rods to protect antennas from direct strikes. Make sure that cables and equipment are properly grounded to provide low-impedance paths for lightning currents. Install surge suppressors on adjacent telephone lines and power lines.

Recommended is lightning protection for cables leading to the wireless ODU to/from the power brick. The lightning protection should be placed at points close to where the cable passes through the bulkhead into the building, as well as near the ODU.

CAT5 CABLE

When the entire control cable, from the building entrance to the ODU, is encased in steel conduit, no surge arrestors are required. Otherwise, each control cable requires one surge arrestor within two feet of the building entrance.

Note For installations with several radios, it may be more convenient to use a Type-66 punch block with surge arrestors. A Type-66 punch block can accommodate up to 25 conductor pairs.

INTERFERENCE

An important part of planning your broadband fixed wireless system is the avoidance of interference. Interference can be caused by effects within the system or outside the system. Good planning for frequencies and antennas can overcome most interference challenges.

Co-Channel and Adjacent Channel Interference

Co-channel interference results when another RF link is using the same channel frequency. Adjacent-channel interference results when another RF link is using an adjacent channel frequency. In selecting a site, a spectrum analyzer can be used to determine if any strong signals are present at the site and, if they are, to determine how close they are to the desired frequency. The further away from your proposed frequency, the less likely they are to cause a problem. Antenna placement and polarization, as well as the use of the built-in high-gain, low-sidelobe antennas, is the most effective method of reducing this type of interference.

Antennas

Antennas frequently play a key role in reducing the potential for interference. They come in a variety of configurations that have different performance characteristics in the areas of gain and directionality. Antennas that transmit/receive in all directions are known as omni-directional, while those that transmit/receive in one specific direction are categorized as directional. Antennas also vary in beamwidth, which is the aperture to which they can “see” signals. Larger antennas typically provide narrower beamwidths and can diminish interference from nearby transmitters by:

- Focusing RF energy from the intended destination
- Reducing the power of interfering sources not directly aligned to the antenna

Antennas: the narrower, the better

Tsunami Multipoint Ethernet Systems use integrated directional antennas that transmit and receive a relatively narrow beamwidth of radio energy, improving system performance by reducing the likelihood that surrounding RF clutter will interfere with reception. The antennas with this system are directional and can not be detached.

	<u>Base Stations</u>	<u>Subscriber Units</u>
Type:	Flat-panel antenna	Flat-panel antenna
Beamwidth:	60-degree	10-degree
Elevation:	6-degree	10-degree

Even when other licensees are not an issue, if you are using a network deployment using the "cell" approach, all these considerations are still important to reduce interference between your own adjacent installations. Antennas are tuned to operate on a specific group of frequencies. Tsunami Multipoint offers a variety of channel plans that provide a flexible tool for overcoming present and future interference. Four non-overlapping 20 MHz channels (six total directional channels) can be used to avoid existing traffic in the 5.8 GHz frequency band. If one part of the 5.8 GHz spectrum is occupied when Tsunami Multipoint is initially deployed, another frequency channel can be selected to bypass the interfering signal. If interference arises after deployment, another frequency channel plan can be selected to “steer around” the impacted channel. Beamwidth and gain have been optimized in this equipment.

ANTENNA POLARIZATION

The Tsunami Multipoint system uses left-hand circular polarization. As a result, the signal is successfully received regardless of the orientation of the antenna. Circular polarization also provides protection against multipath degradation of the signal quality.

TOWERS

When planning antenna placement, it might be necessary to build a free-standing tower for the antenna. Regulations and limitations define the height and location of these towers with respect to airports, runways, and airplane approach paths. These regulations are controlled by the FAA. In some circumstances, the tower installations must be approved by the FAA, registered with the FCC, or both.

To ensure compliance, review the current FCC regulations regarding antenna structures. These regulations (along with examples) are on the FCC web site at www.fcc.gov/wtb/antenna/.

Path Planning

To get the most value from a wireless system, path planning is essential. In addition to the fact that radio signals dissipate as they travel, many other factors operate on a microwave signal as it moves through space. All of these must be taken into account, because any obstructions in the path will attenuate the signal.

CALCULATING A LINK BUDGET

A link budget is a rough calculation of all known elements of the link to determine if the signal will have the proper strength when it reaches the other end of the link. To make this calculation, the following information should be available:

The minimum antenna height at each end of the link for paths longer than seven miles (for smooth terrain without obstructions) is the height of the First Fresnel Zone plus the additional height required to clear the earth bulge.

A signal degrades as it moves through space. The longer the path, the more loss it experiences. This free-space path loss is a factor in calculating the link viability. Free-space path loss is easily calculated for miles or kilometers.

Availability represents the quality of a link. It is the ratio of the time that the link is available to the total time. This serves as a guide to the service that you can expect, on average, over a period of one year. Table 2-2 shows how percentage availability relates to outage time per year.

Note: use the path planning tools located on the WMUX web site: www.wmux.com

Note You can lower the bit error rate (BER), resulting in greater reliability, by reducing the data throughput or reducing the distance.

Unlicensed Frequencies-U-NII

The FCC has identified the frequencies from 5.725 to 5.825 GHz as Unlicensed National Information Infrastructure (U-NII). This band can be used by anyone

without having to obtain a license. However, you must use radio equipment that is "type approved" by the FCC or local government for use within the specific band.

3. Quick Set-up Procedure

Please read this section completely before attempting to install any software, test or operate this system.

Permanent damage to the equipment can result if directions are not followed exactly as provided.

This system is very sensitive to power supply operation and, if not powered up in the proper order, permanent damage may occur. Please read the power up sequence before applying power. Also, provide only the power specified in this document (voltage and frequency).

Important Configuration Notes

These Subscriber Unit (SU) devices do not require any user interface. After configuring the Hub unit (called Base Station (BS) in this document elsewhere), the CPE devices will automatically negotiate with the Hub if sufficient signal strength is received in both directions to establish communications.

The Ethernet Console program is not ultimately intended to be a user's interface. However, this program does provide configuration controls for this particular system. The syntax of the data entry must be followed exactly as shown. When a string of characters is shown in this document with quotation marks around it (such as "ip"), do not type the quotation marks. When the letter "x" is shown within the quotation marks, this represents a number that the operator will select based on other factors. When the word (enter) is shown, this indicates pressing of the Enter (or Return) key on your keyboard. Wherever there are spaces shown in the syntax of a command, include these spaces. Commands are case sensitive.

Unpacking the System

Pay close attention to how units are packed before unpacking.

SEE PHOTOS ON THE NEXT PAGE FOR CLARIFICATION

For the case with the Base Station Unit (BSU), unpacking should be in the following steps:

- a. Remove power supply unit
- b. Remove loose cables and small mounting hardware in the bracket area
- c. Remove the top layer of foam being careful not to rip
- d. Remove large mounting bracket
- e. Remove BSU unit

For the Subscriber Units (SU), unpacking should be in the following steps:

- a. Remove power supply units
- b. Remove small metal brackets
- c. Remove all cables and small hardware
- d. Remove SU



Figure 3-3-1: Subscriber Unit

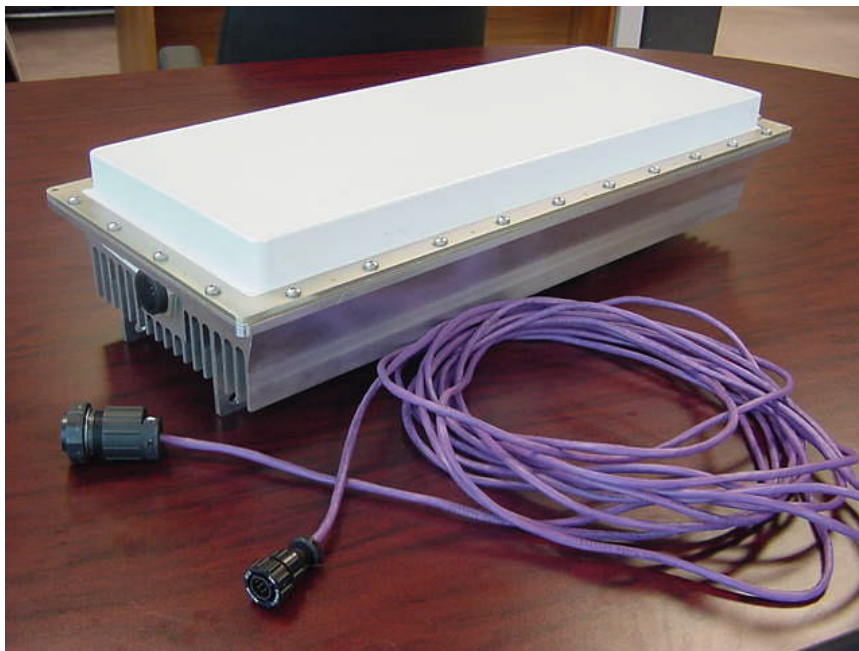




Figure 3-2: Base Station Unit

Software Installation

1. Insert the CD provided into the Windows-compatible PC that you intend to use for all unit configuration activities
 2. Close all applications on the computer
 3. Open CD file folders and open the folder named “jdk122”
 4. Locate the “win9x” folder and open this folder
 5. Identify the file called “jdk-1_2_2_005-win.exe” with the icon that typically looks like this  and double-click to launch installation of the Java Developers Kit
 6. Follow the installation prompts. Do not change the path or options that are provided as default settings (say ‘yes’ or ‘next’ to all prompts)
 7. Edit your autoexec.bat file to include the statement:
`“SET PATH=%PATH%;C:\jdk1.2.2\bin”`
 If you are unclear on how to modify your autoexec.bat file, follow this procedure:
 8. Locate the existing autoexec.bat file on your C drive (this is normally in the root directory of the C drive)
 9. Copy this file to another location (such as in a folder or on your desktop)
 10. Rename the copy to a new name (such as autoexec.old)
 11. Initiate text editor program, such as WordPad
 12. Open C:\autoexec.bat file using the text editor program
 13. Scroll to the end of the file and add a line with the “set path” command line from above
 14. Save and close the file – the file must be saved with the existing name and extension
 15. Restart your computer
 16. Close all applications on the computer
 17. Open CD file folders and open the folder named “Ethernet Console”
 18. Identify the file called “setup.exe” and double-click to launch installation of the Ethernet Console program
 19. Follow the installation prompts. Do not change the path or options that are provided as default settings (say ‘yes’ or ‘next’ to all prompts)
 20. When completed verify that the Ethernet Console icon (shortcut) is located on your PC desktop
 21. Double-click on Ethernet Console icon. Wait approximately 20 seconds. The screen will normally flash at first, then wait, then open the window permanently after several seconds.
- If Ethernet Console does not launch properly, use “remove programs” utility to remove all existing Java-related programs (including the one just installed). Repeat steps 3 through 6, restart your computer, and repeat this step to initiate Ethernet Console. In most cases, this process will overcome any issues with this program.
22. Delete copy of old autoexec file (if desired)
 23. Remove CD
 24. Installation is complete



Hub Site Equipment Configuration (BSU)

- a. Initiate your PC's IP address to 192.168.20.xxx (where xxx is anything other than 120)
- b. Set Subnet Mask on your PC to 255.255.255.0
- c. Restart your PC if required
- d. Initiate Ethernet Console on your PC by double-clicking on this :  that appears on your PC desktop
- e. Connect a straight CAT5 cable between your PC and the BSU
- f. Connect the BSU to the power supply via the cable provided

MAKE SURE POWER SWITCH ON THE POWER SUPPLY IS SET TO THE OFF POSITION!

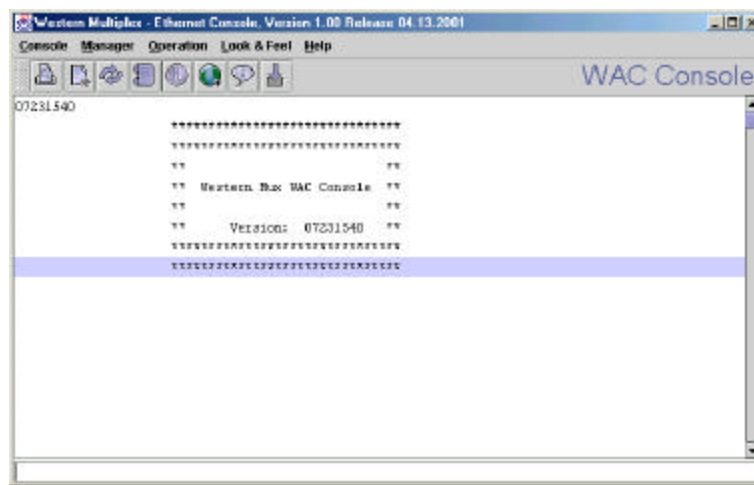
Connect the BSU power cord to 115Vac, 60 Hz power

**ALL CABLES MUST BE CONNECTED BEFORE POWER IS TURNED ON!
IF NECESSARY, TURN TOGGLE SWITCH TO THE OFF POSITION
BEFORE DISCONNECTING CABLE BETWEEN BSU AND POWER
SUPPLY**

Turn power supply on with toggle switch located on the power supply

Wait approximately 10 seconds.... Watch the Ethernet Console for the initiation screen shown below.

(The upper right corner of the Ethernet Console window changes from "Ethernet Console" to "BSU Console" as shown below.)



If “BSU Console” appears, but wakeup screen is not present – type “version” (return) – you should see the screen above.

If “Ethernet Console” does not change to “BSU Console” after 30 seconds – recycle the power using the toggle switch on the power supply. Try several times if needed.

- Type “pa 255” (return) – this sets the unit’s output power to “on” using ALC
- Type “pa” (return) to make sure pa command was received – screen should show “Current_TXDAC= 160”
- Type “pa 0” (return) to turn the transmitter power off.
- The default IP address of the BSU is 192.168.20.120. To set the unit’s IP address, type “ip xxx.xxx.xxx.xxx” (return)
- If necessary, change your PC’s IP address to match the new numbering scheme
- Reinitiate the Ethernet Console program if necessary.
- After reestablishing communications (if this was necessary), type “ip” (return) to verify new the new IP address.
- The default subnet mask of the BSU is 255.255.255.0 (-1.-1.-1.0 in signed integer form). To change the subnet mask of the unit, type “netmask xxx.xxx.xxx.xxx” (return)
- This version of software does not provide direct verification of the subnet mask. You may type “netmask” (return) to view the current subnet mask setting, however the number provided is in degrees format (signed integer equivalent to hexadecimal) instead of hexadecimal or decimal.
- The default gateway of the BSU is 192.168.20.201. To change the gateway address for the unit, type “gateway xxx.xxx.xxx.xxx” (return)
- To verify gateway address for the unit, type “gateway” (return)
- The default setting of the BSU for bandwidth modes is QPSK $\frac{1}{2}$ (20 Mbps), also known as modulation mode 3. To change bandwidth mode to QPSK $\frac{3}{4}$ (30 Mbps), type “modulation 2” (return) and then type “setconf” (return) to activate this setting. If you wish to return to QPSK $\frac{1}{2}$ (20 Mbps) mode, type “modulation 3” (return) and then type “setconf” (return).
- To verify bandwidth (modulation) mode, type “modulation” (return)
- The default setting of the BSU for uplink and downlink time slot allocation is 5 time slots downlink and 3 slots uplink (corresponding to the 20 Mbps bandwidth mode, which has 8 total time slots). To change these settings, type “firstInboundSlot x” (return) and then type “setconf” (return). In the 20Mbps bandwidth mode (modulation mode 3), the lowest number for this setting is 2 and the highest is 5. In the 30 Mbps bandwidth mode (modulation mode 2), the lowest number for this setting is 2 and the highest is 9.
- To verify the uplink and downlink time slot allocations, type “firstInboundSlot” (enter)
- Helpful hint: The number “x” within the statement “firstInboundSlot x” is equivalent to the total number of downlink timeslots that are allocated (zero through ‘first inbound slot’ minus 1).
- The default setting of the BSU channel frequency is 3. There are four operating channel frequencies in this model. To change the frequency channel of the BS, type “frequency x” (return), then type “setconf” (return). Valid numbers are 0 through 3.

T S U N A M I M U L T I P O I N T

- To verify the frequency channel, type “frequency” (enter).
- At any time, if you wish to return a unit to the factory default settings, you may type “restart” (return) or cycle power (using the toggle switch on the power supply). It is advised to use the restart command.

Subscriber Unit Configuration

The CPE units require the same software and are connected and controlled in an identical fashion as the BS. Configure the BSU unit and your computer first to become familiar with these connections and controls and to be ready to connect to the CPE.

- CONNECT ALL CABLES BEFORE PLUGGING INTO AC POWER
- DISCONNECT AC POWER FIRST BEFORE REMOVING THE CABLE BETWEEN THE POWER SUPPLY AND CPE

ONLY THEN APPLY 115VAC 60 Hz POWER

When your PC is connected to a CPE unit, the Ethernet Console will display “SU Console” (instead of BSU Console) in the upper right corner of the screen.

Use the IP, gateway and subnet mask commands to change or verify these settings for each CPE unit. No other commands should be needed. The CPE will automatically detect proper operating frequency and bandwidth settings.

It can be helpful to configure the CPE equipment before it establishes a link with the BS. When RF communication is initiated, the units will start negotiating and registering IP addresses, setting frequency channels and other settings. The terminal number of the CPE is labeled on the bottom of the CPE, and this number (along with IP address and Ethernet address) will appear on the BSU console screen when the CPE is negotiating with the BSU for initialization.

When a link is established, both ends of the system will display different communications on the Console window. The signal strength can be seen on the SU Console, and this can be used as a rough antenna alignment tool. The command to view signal strength is “rsl” (return). To align antennas, align by sight, type “rsl” (return) in the SU console, read the RSL, make fine adjustments to the antenna alignment, and type “rsl” (return) again, repeating until signal is peaked. The number returned by the rsl command is in dBm, therefore, the less negative the number, the stronger the signal (such as -40 is higher than -50).

Mechanical Considerations – Mounting Units

The CPE units are designed to directly mount to 1-1/2 inch to 1-3/4 inch pole diameters (outer diameter), or mount to pole diameter of 2 inches or to a wall or other flat surface using optional mounting brackets.

For mounting directly to a 1-1/2 inch or 1-3/4 inch pipe, first attach the mounting bracket to the pole using the U-bolt retainer. Then attach the SU to the mounting bracket, and lock into position by tightening the 10-32 screws. See photos below for detail. Connect the weatherproof RJ45 connector.

For mounting to a flat surface, attach mounting bracket to the CPE using bolts supplied, and then mount to flat surface using your own hardware.



Figure 3-2 Subscriber ODU

The BSU is designed to mount to a 2 inch to 2-3/4 inch pipe using the bracket and hardware supplied. See photos below for detail.



Figure 3-3: Base Station ODU

4. Specifications

PRODUCT	MODEL	MODEL NUMBER
Base Station Unit	60 Mbps	40400-605
	20 Mbps	40400-205

Subscriber Unit	60 Mbps	40100-605
	40 Mbps	40100-405
	20 Mbps	40100-205

SPECIFICATION	SPEED	OPTIONS
Aggregate throughput	60 Mbps	20, 40, 60 Mbps
	40 Mbps	20, 40 Mbps
	20 Mbps	20 Mbps

SPECIFICATION	SPEED	Rx	Tx
Threshold – Base Station	40, 60 Mbps	-77 dBm	36 dBm
	20 Mbps	-89 dBm	36 dBm

Threshold – Subscriber Unit	60 Mbps	-77 dBm	36 dBm
	40 Mbps	-81 dBm	36 dBm
	20 Mbps	-89 dBm	36 dBm

Maximum Distance	60 Mbps at 5 miles/8 kilometers
	40 Mbps at 6 miles/10 kilometers
	30 Mbps at 7 miles/11 kilometers
	20 Mbps at 8 miles/13 kilometers

SYSTEM

Operating Frequency Range	5725-5825 MHz
Radio Access Method	TDMA
Duplexing	Time Division Duplex (TDD)
Integrated Antenna	
Base Station Unit (BSU)	18 dBi (60° x 60°)

Subscriber Unit(SU)	21 dBi (10)
Max Subscriber Units/BSU	1,024
Distance/Capacity Limits	60 Mbps at 5 miles/8 kilometers 40 Mbps at 6 miles/10 kilometers 30 Mbps at 7 miles/11 kilometers 20 Mbps at 8 miles/13 kilometers
Frequency Channels	4 non-overlapping, 6 available
Regulatory Compliance	FCC Part 15.400 (U-NII) IC RSS210

STANDARDS COMPLIANCE AND INTERFACES

Ethernet Interface	10/100BaseT
Ethernet Connector	RJ45 female
SU indoor-outdoor cable	RJ45 (outdoor) & DIN(indoor) over Category-5 cable
BSU indoor-outdoor cable	Circular plastic connectors over Category-5 cable
Standards Compliance	IEEE 802.1d Bridging Mode IEEE 802.1q VLAN IEEE 802.16b Broadband Wireless Access

CONFIGURATION AND MANAGEMENT

Base Station Configuration	via Ethernet, SNMP, or Wireless Manager
Subscriber Unit Configuration	Automatic
SNMP Agent	MIB 11
Security	Authentication, IP/MAC Filtering
Software Upgrades	Over-the-air Subscriber Unit reprogramming Downloadable Base Station reprogramming

POWER /ENVIRONMENT /SAFETY

Electrical	
Base Station Unit	-36 to -60 Volts DC, 1.25 Amps
Subscriber Unit	18 to 28 Volts DC, 0.8 Amps
Subscriber Unit Power Brick	115 Volts AC
Base Station Unit Power Brick	100-240 Volts AC
Base Station Unit Power Block	-48 Volts DC
Operational Temperature	-40° to 55° C (all units)
Humidity	5% to 100%, condensing
EIVIC	FCC Class B
Safety	UL-1950

Environmental Compliance ETS 300 019

PHYSICAL DIMENSIONS

Subscriber Unit (Outdoor Unit)

Size (WxHxD) 10.5x10.5x 6.8 inch/126.5x26.5x 17.4cm

Weight 10 lbs/ 4.5 kg

Subscriber Unit Power Brick (Indoor Unit)

Size (WxHxD) 3.6 x 5.1 x 2.6 inches/92 x 130 x 67 cm

Weight 2.7 lbs/1.2 kg

Base Station (Outdoor Unit)

Size (WxHxD) 10.2 x 24 x 6.6 inches/25.9 x 61 x 16.8cm

Weight 20 lbs/9 kg

Base Station Power Block (Indoor Unit, for up to 6 Base Stations)

Size (WxHxD) 17.2 x 3.5 x 8.25 inches/43.7x8.9x 21cm

Weight 5 lbs/2.3 kg

Base Station Power Brick (Indoor Unit, for 1 Base Station)

Size (WxHxD) 37.4x 70.9 x 24.8 inch/95 x 180 x 63 cm

Weight 1.5 lbs/0.7 kg

MOUNTING (INSTALLATION)

Base Unit Pole Mount, 1.75-2.75" dia.

Subscriber Unit Pole Mount, 1.25-2.75" dia.
(wall mount kit available)