

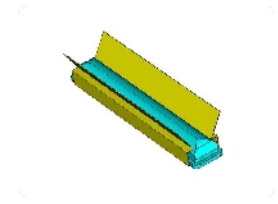
5 GHz Base Station Antenna, 30°

- MA-WB55-20

MARS 30° Broadband Sector Antenna provides a cost effective solution for large scale WLL, WLAN, H-LAN, ISM, UNII, Public Safety, Municipal MESH Networks and Point-to-Multi-Point applications.

Additional Features:

- stable performance with 20 dBi of gain
- small size allowing for easy blending with any environment
- tilt mount allowing for quick and easy installation
- UV protected radome suitable for harsh environment installations



Specifications:

Electrical

Frequency range	4.9 - 6.1 GHz
Gain,typ.	20 dBi
VSWR, max.	1.8:1
3 dB Beam-Width, H-Plane, typ.	30 °
3 dB Beam-Width, E-Plane, typ.	8 °
Side Lobes, min.	ETSI EN 302 085 V1.2.3 â€“ CS1
Polarization	Linear Vertical
Cross Polarization, min.	ETSI EN 302 085 V1.2.3 â€“ CS1
Front to Back Ratio, min.	ETSI EN 302 085 V1.2.3 â€“ CS1
Input power, max	50 Watt
Input Impedance	50 Ohm
Lightning Protection	DC Grounded

Mechanical

Dimensions (HxWxD)	573 x 120 x 115 mm (22.6"x4.7"x4.5")
Weight	1 kg
Connector	N-Type, Female
Back Plane	Aluminum protected through chemical passivation
Radome	UV Protected, Polycarbonate
Mount	<u>MNT-22</u>

Environmental

Operating Temperature Range	- 40°C to + 65°C
Vibration	According to IEC 60721-3-4
Wind Load	200 km/h (survival)
Flammability	UL94
Water Proofing	IP-67
Humidity	ETS 300 019-1-4, EN 302 085 (annex A.1.1)
Ice and Snow	25mm radial (survival)
Salt Fog	According to IEC 68-2-11
Service Life	>10 years

Standard Compliance

ETSI EN 302 085 V1.2.3 â€“ CS1

MARS reserves the right to make technical changes or modifications to any of its products and specifications without prior notice and without implementing such changes to prior supplied products. Product images are representative and indicative only. Warranty terms and general conditions of sale are applicable on any purchase of any product and are available in the "Policies" section.