





**Tsunami MP.11 5012-SUI**

SN: 06JTS1560552  
PN: 725542  
Wireless .11a MAC-Addr.: 0020A8E97CD  
Ethernet MAC-Addr.: 0020A8E97CE

5012-SUI-WA-US

FCC ID: 33MFPAGAT01  
IC ID: 4115A-APAGAT01  
I.S.E.  
R&S LIMITED #17794  
**CE 1313**  
CANADA ICES-003, CLASS B  
**R&S N11394**  
Certified Radio Inside

Input: 5V --- 2A MAX.  
Power over Ethernet: 802.3af

Reference user documentation for regulatory details and all radio approvals

CAUTION: Only use AC/DC adapters specified for this product.

Proxim Corporation / US: AP-AQ-AT-01

MADE IN TAIWAN



**Tsunami MP.11 5054-SUI**

SN: 06JTS2570055  
PN: 725712  
Wireless .11a MAC-Addr.: 0020A8EEF0B8  
Ethernet MAC-Addr.: 0020A8EEF0B9

5054-SUI-US

FCC ID: 33MFPAGAT01  
IC ID: 4115A-APAGAT01  
I.S.E.  
R&S LIMITED #17794  
**CE 1313**  
CANADA ICES-003, CLASS B  
**R&S N11394**  
Certified Radio Inside

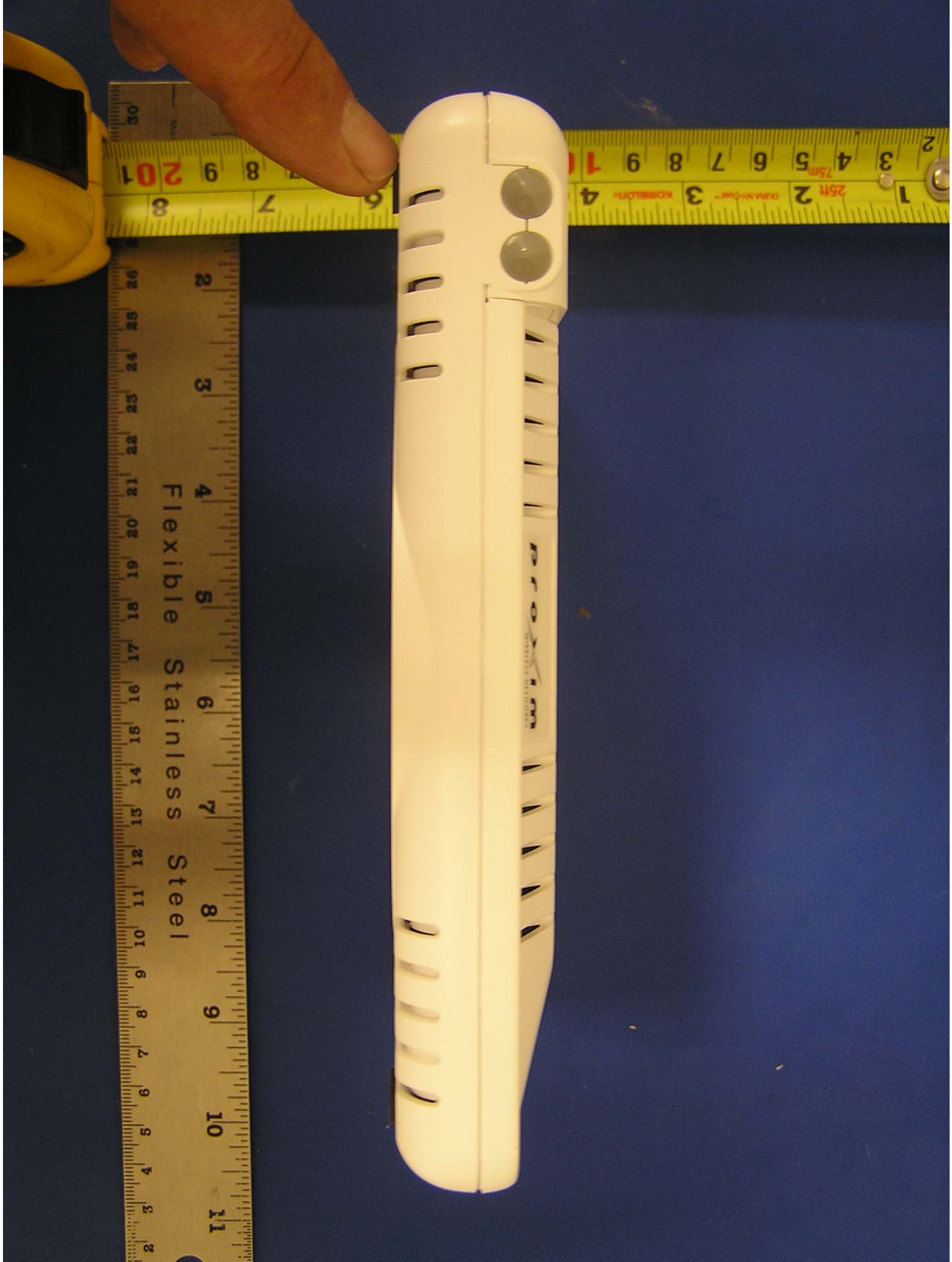
Input: 5V --- 2A MAX.  
Power over Ethernet: 802.3af

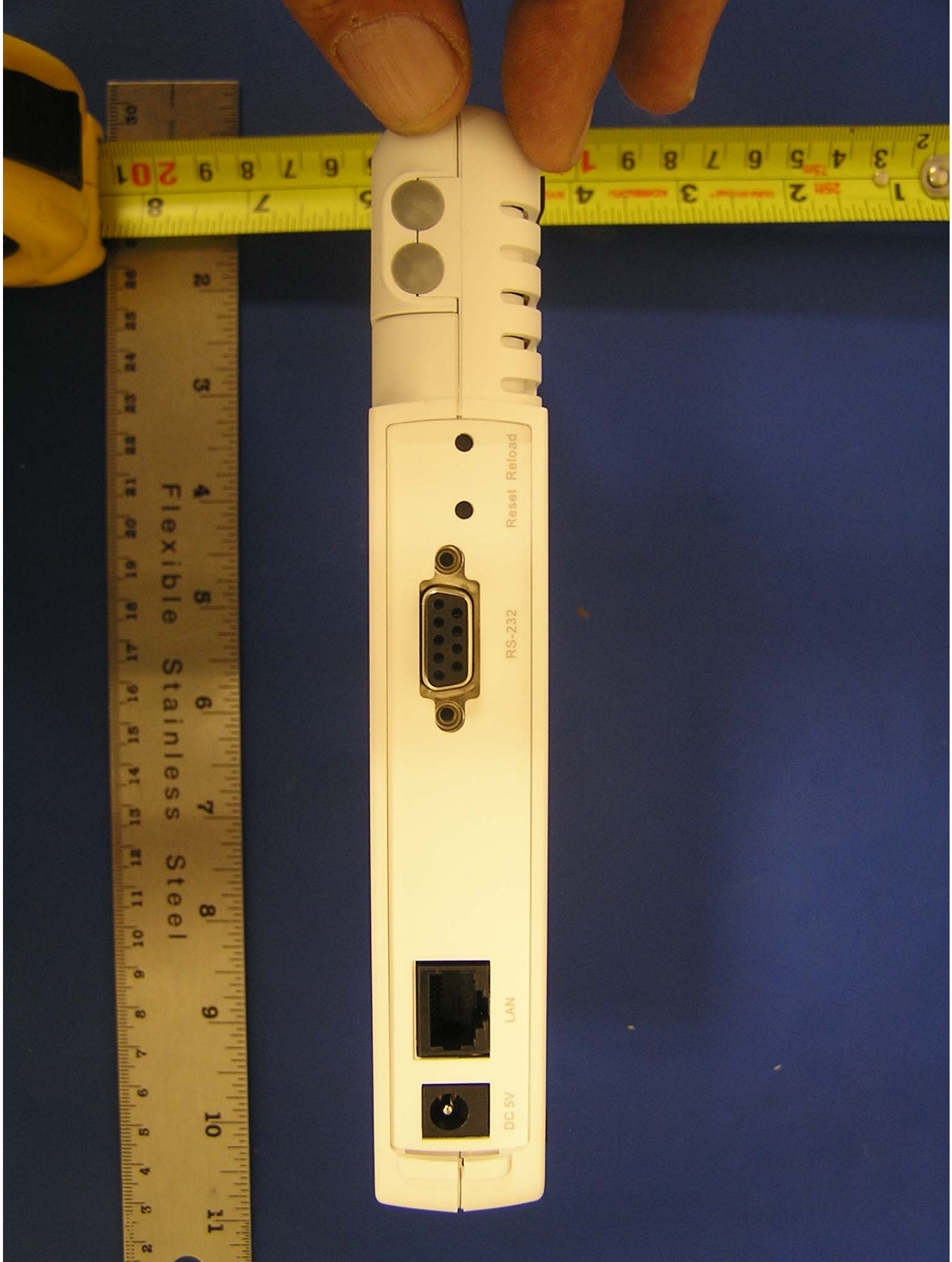
Reference user documentation for regulatory details and all radio approvals

CAUTION: Only use AC/DC adapters specified for this product.

Proxim Corporation / US: AP-AQ-AT-01

MADE IN TAIWAN





Flexible Stainless Steel

Reset Reload

RS-232

LAN

DC 5V

