

12/23/02

## Ambit (Model 8460-05), Frequency: 2412 MHz (802.11b)

Frequency: 2450 MHz; Crest factor: 1.0

Medium: Muscle 2450 MHz:  $s = 2.09$  mho/m  $\epsilon_r = 50.5$   $\rho = 1.00$  g/cm<sup>3</sup>

SAM-1 Phantom; Flat Section; Position: (90°,90°)

Probe: ET3DV6 - SN1578; ConvF(4.10,4.10,4.10);

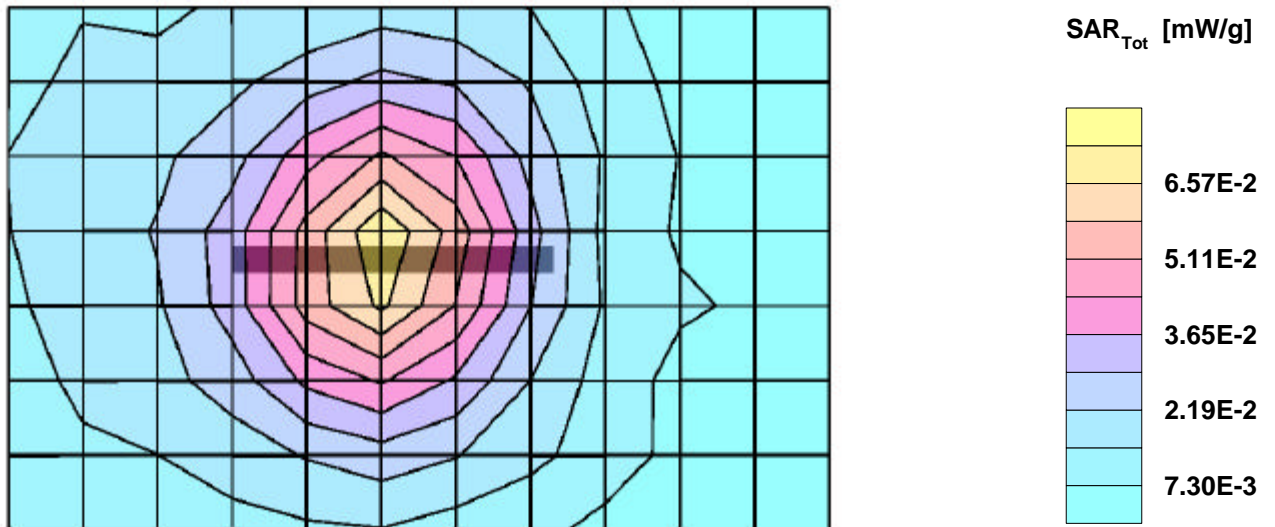
SAR:Cube 5x5x7: Peak: 0.128 mW/g, SAR (1g): 0.0671 mW/g, SAR (10g): 0.0373 mW/g, (Worst-case extrapolation)

Penetration depth: 7.8 (7.0, 9.5) [mm]; Powerdrift: 0.11 dB

Coarse: Dx = 13.0, Dy = 13.0, Dz = 0.0

Ambient Temperature (degree C): 22.0

Liquid Temperature (degree C): 20.0



12/23/02

## Ambit (Model 8460-05), Frequency: 2437 MHz (802.11b)

Frequency: 2450 MHz; Crest factor: 1.0

Medium: Muscle 2450 MHz:  $s = 2.09$  mho/m  $\epsilon_r = 50.5$   $\rho = 1.00$  g/cm<sup>3</sup>

SAM-1 Phantom; Flat Section; Position: (90°,90°)

Probe: ET3DV6 - SN1578; ConvF(4.10,4.10,4.10);

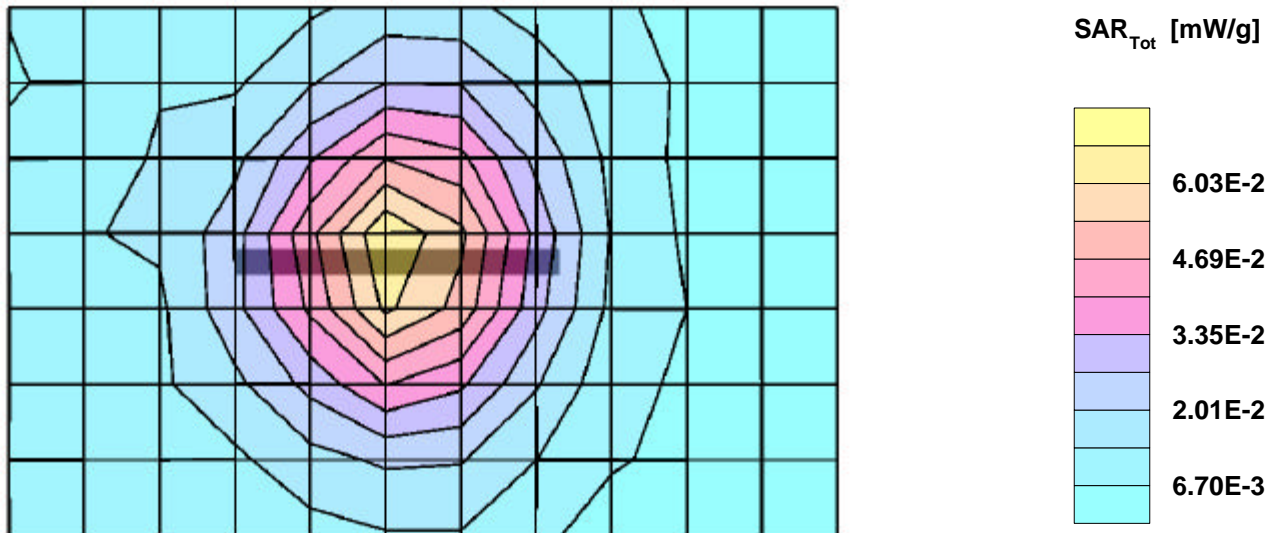
SAR:Cube 5x5x7: Peak: 0.127 mW/g, SAR (1g): 0.0659 mW/g, SAR (10g): 0.0358 mW/g, (Worst-case extrapolation)

Penetration depth: 6.9 (6.6, 7.5) [mm]; Powerdrift: -0.15 dB

Coarse: Dx = 13.0, Dy = 13.0, Dz = 0.0

Ambient Temperature (degree C): 22.0

Liquid Temperature (degree C): 20.0



12/23/02

## Ambit (Model 8460-05), Frequency: 2462 MHz (802.11b)

Frequency: 2450 MHz; Crest factor: 1.0

Medium: Muscle 2450 MHz:  $s = 2.09$  mho/m  $\epsilon_r = 50.5$   $\rho = 1.00$  g/cm<sup>3</sup>

SAM-1 Phantom; Flat Section; Position: (90°,90°)

Probe: ET3DV6 - SN1578; ConvF(4.10,4.10,4.10);

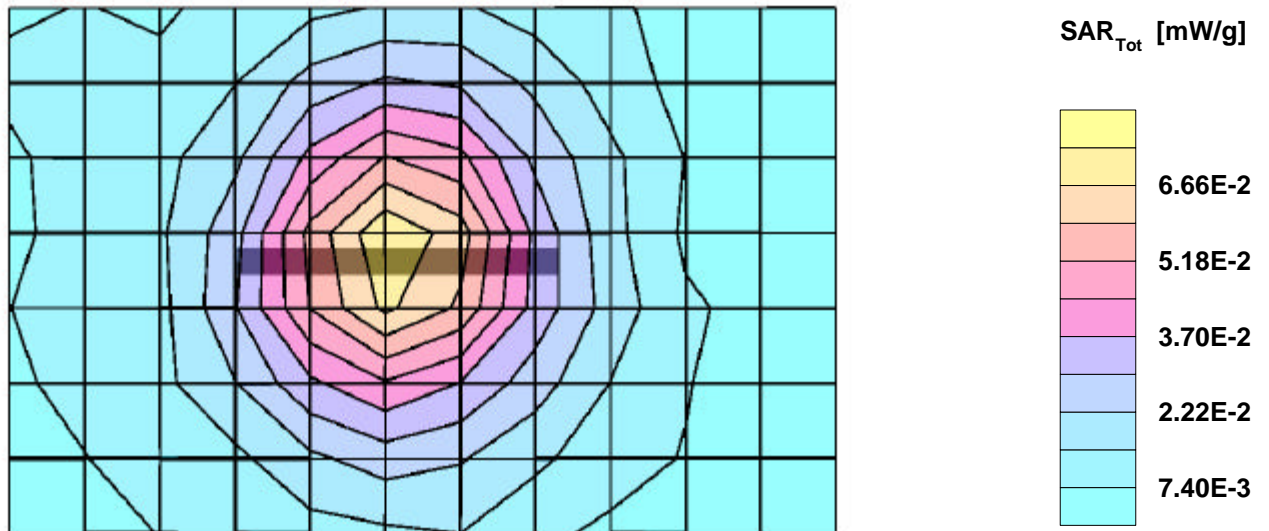
SAR:Cube 5x5x7: Peak: 0.137 mW/g, SAR (1g): 0.0711 mW/g, SAR (10g): 0.0389 mW/g, (Worst-case extrapolation)

Penetration depth: 7.6 (7.1, 8.8) [mm]; Powerdrift: -0.01 dB

Coarse: Dx = 13.0, Dy = 13.0, Dz = 0.0

Ambient Temperature (degree C): 22.0

Liquid Temperature (degree C): 20.0



# Ambit (Model 8460-05), Frequency: 2462 MHz (802.11b)

Frequency: 2450 MHz; Crest factor: 1.0

Medium: Muscle 2450 MHz:  $s = 2.09$  mho/m  $\epsilon_r = 50.5$   $\rho = 1.00$  g/cm<sup>3</sup>

SAM-1 Phantom; Section; Position:

Probe: ET3DV6 - SN1578; ConvF(4.10,4.10,4.10);

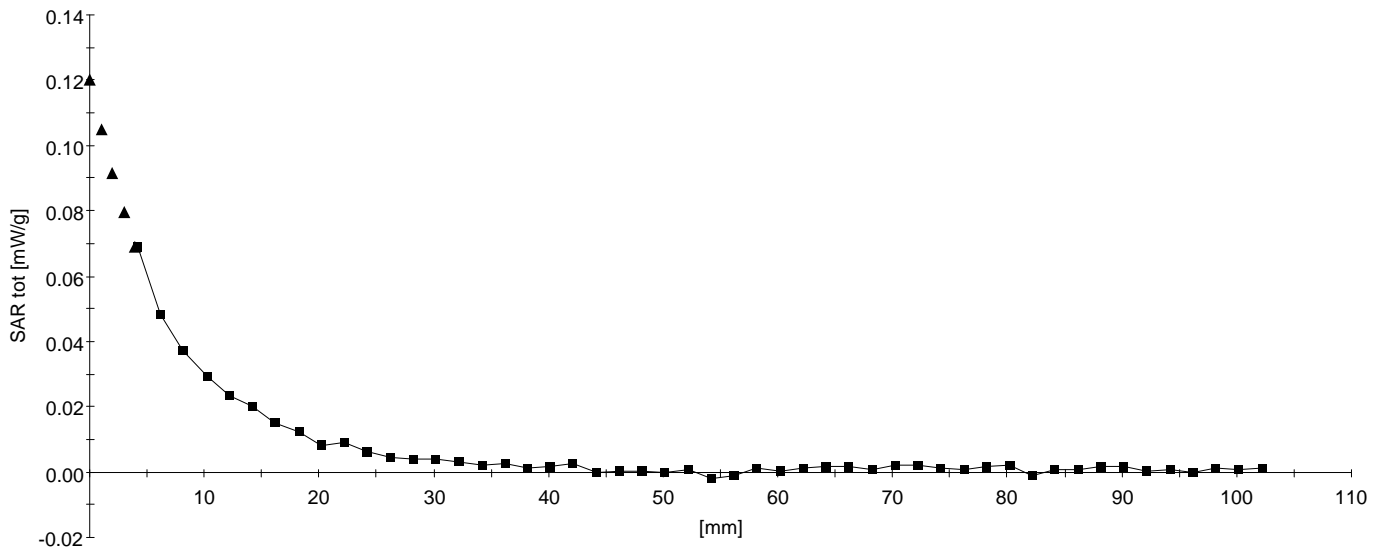
SAR: , , ()

Penetration depth: 7.7 (7.1, 9.2) [mm];

Z-Axis: Dx = 0.0, Dy = 0.0, Dz = 2.0

Ambient Temperature (degree C): 22.0

Liquid Temperature (degree C): 20.0



12/23/02

## Ambit (Model 8460-05), Frequency: 2412 MHz (802.11g)

Frequency: 2450 MHz; Crest factor: 1.0

Medium: Muscle 2450 MHz:  $s = 2.09$  mho/m  $\epsilon_r = 50.5$   $\rho = 1.00$  g/cm<sup>3</sup>

SAM-1 Phantom; Flat Section; Position: (90°,90°)

Probe: ET3DV6 - SN1578; ConvF(4.10,4.10,4.10);

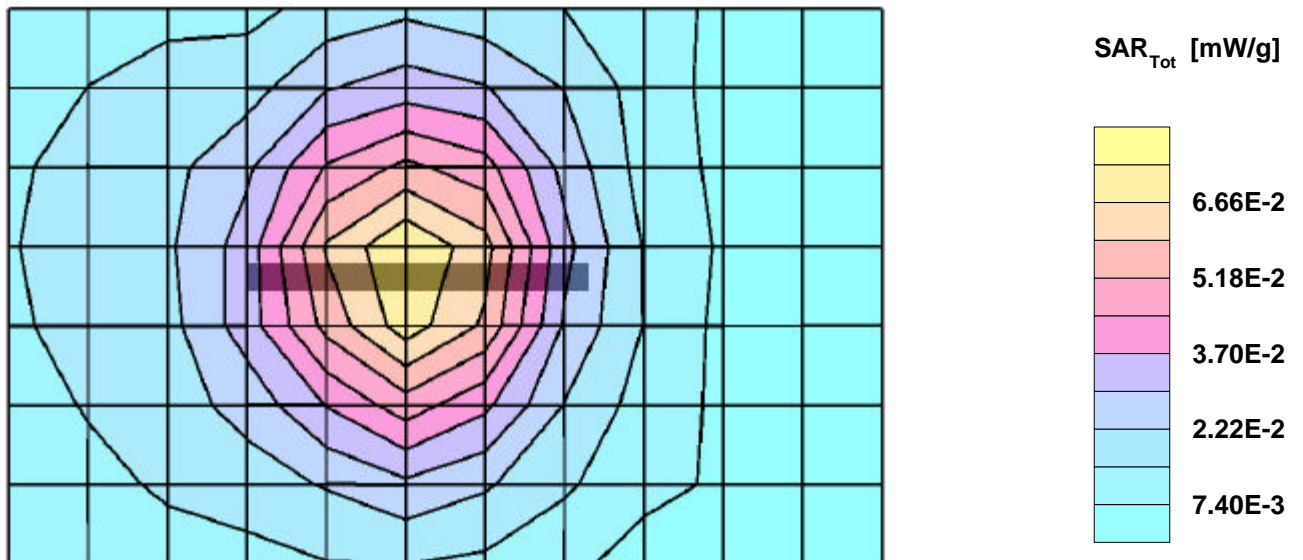
SAR:Cube 5x5x7: Peak: 0.133 mW/g, SAR (1g): 0.0712 mW/g, SAR (10g): 0.0401 mW/g, (Worst-case extrapolation)

Penetration depth: 7.3 (7.0, 8.1) [mm]; Powerdrift: -0.04 dB

Coarse: Dx = 13.0, Dy = 13.0, Dz = 0.0

Ambient Temperature (degree C): 22.0

Liquid Temperature (degree C): 20.0



12/23/02

## Ambit (Model 8460-05), Frequency: 2437 MHz (802.11g)

Frequency: 2450 MHz; Crest factor: 1.0

Medium: Muscle 2450 MHz:  $s = 2.09$  mho/m  $\epsilon_r = 50.5$   $\rho = 1.00$  g/cm<sup>3</sup>

SAM-1 Phantom; Flat Section; Position: (90°,90°)

Probe: ET3DV6 - SN1578; ConvF(4.10,4.10,4.10);

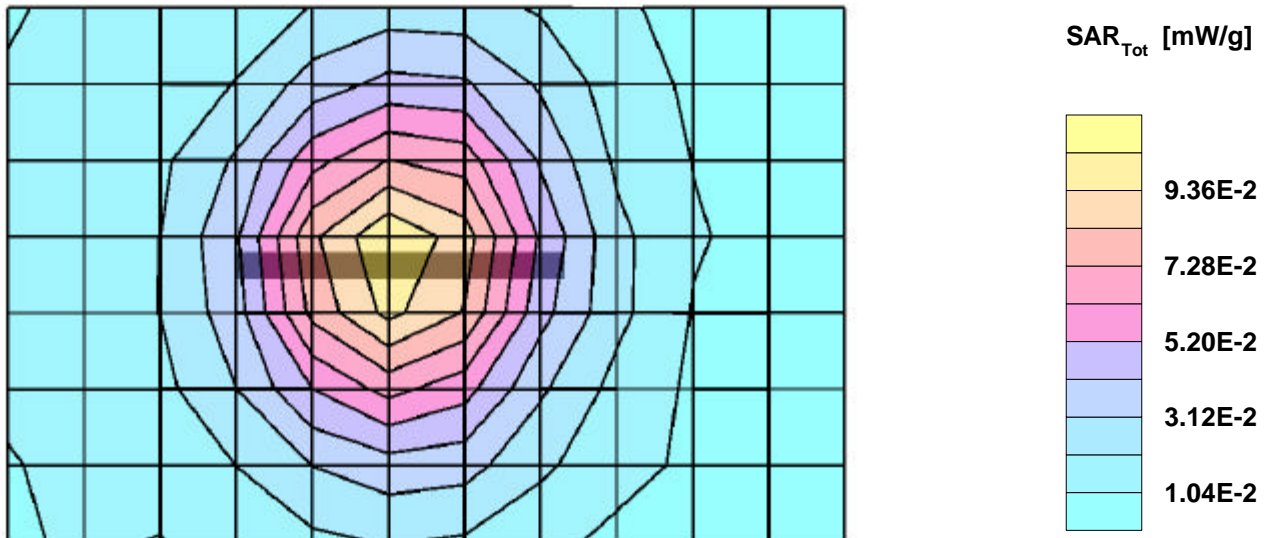
SAR:Cube 5x5x7: Peak: 0.206 mW/g, SAR (1g): 0.108 mW/g, SAR (10g): 0.0585 mW/g, (Worst-case extrapolation)

Penetration depth: 7.4 (7.0, 8.5) [mm]; Powerdrift: -0.16 dB

Coarse: Dx = 13.0, Dy = 13.0, Dz = 0.0

Ambient Temperature (degree C): 22.0

Liquid Temperature (degree C): 20.0



12/23/02

## Ambit (Model 8460-05), Frequency: 2437 MHz (802.11g)

Frequency: 2450 MHz; Crest factor: 1.0

Medium: Muscle 2450 MHz:  $s = 2.09$  mho/m  $\epsilon_r = 50.5$   $\rho = 1.00$  g/cm<sup>3</sup>

SAM-1 Phantom; Section; Position:

Probe: ET3DV6 - SN1578; ConvF(4.10,4.10,4.10);

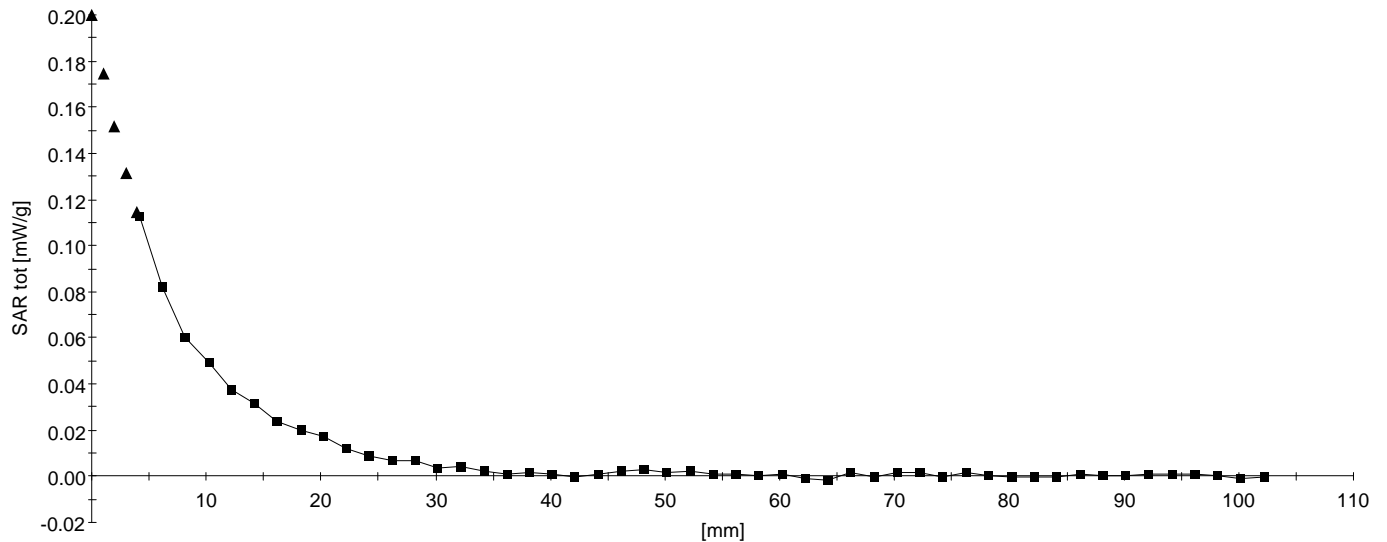
SAR: , , ()

Penetration depth: 7.6 (7.0, 9.0) [mm];

Z-Axis:  $D_x = 0.0$ ,  $D_y = 0.0$ ,  $D_z = 2.0$

Ambient Temperature (degree C): 22.0

Liquid Temperature (degree C): 20.0



12/23/02

## Ambit (Model 8460-05), Frequency: 2462 MHz (802.11g)

Frequency: 2450 MHz; Crest factor: 1.0

Medium: Muscle 2450 MHz:  $s = 2.09$  mho/m  $\epsilon_r = 50.5$   $\rho = 1.00$  g/cm<sup>3</sup>

SAM-1 Phantom; Flat Section; Position: (90°,90°)

Probe: ET3DV6 - SN1578; ConvF(4.10,4.10,4.10);

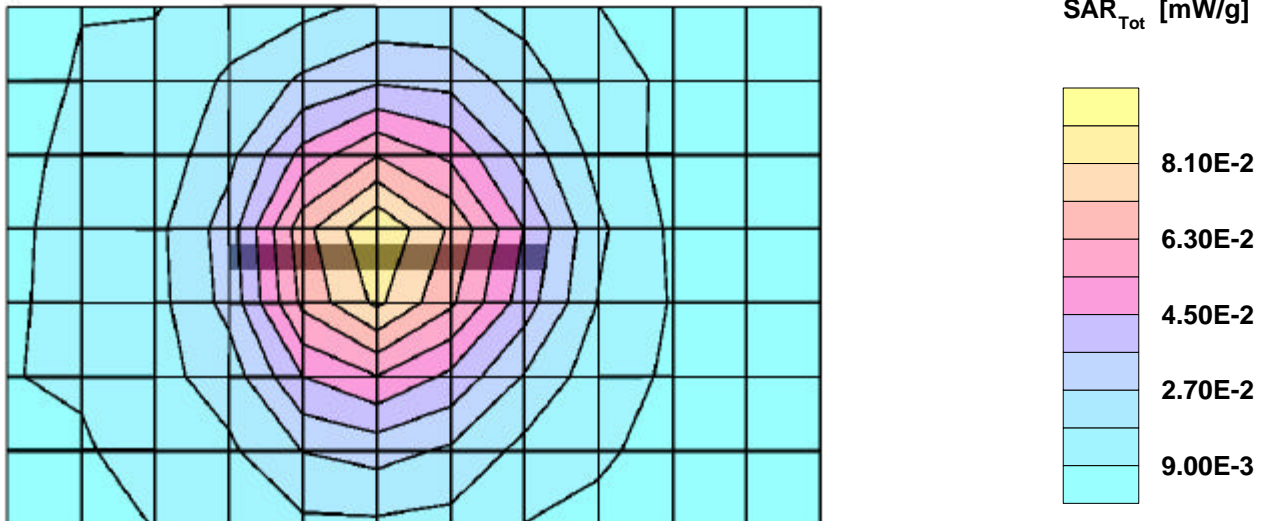
SAR:Cube 5x5x7: Peak: 0.159 mW/g, SAR (1g): 0.0837 mW/g, SAR (10g): 0.0473 mW/g, (Worst-case extrapolation)

Penetration depth: 7.3 (7.0, 8.0) [mm]; Powerdrift: -0.00 dB

Coarse: Dx = 13.0, Dy = 13.0, Dz = 0.0

Ambient Temperature (degree C): 22.0

Liquid Temperature (degree C): 20.0





12/23/02

## Ambit (Model 8460-05), Frequency: 2412 MHz (802.11b)

Frequency: 2450 MHz; Crest factor: 1.0

Medium: Muscle 2450 MHz:  $s = 2.09$  mho/m  $\epsilon_r = 50.5$   $\rho = 1.00$  g/cm<sup>3</sup>

SAM-1 Phantom; Flat Section; Position: (90°,90°)

Probe: ET3DV6 - SN1578; ConvF(4.10,4.10,4.10);

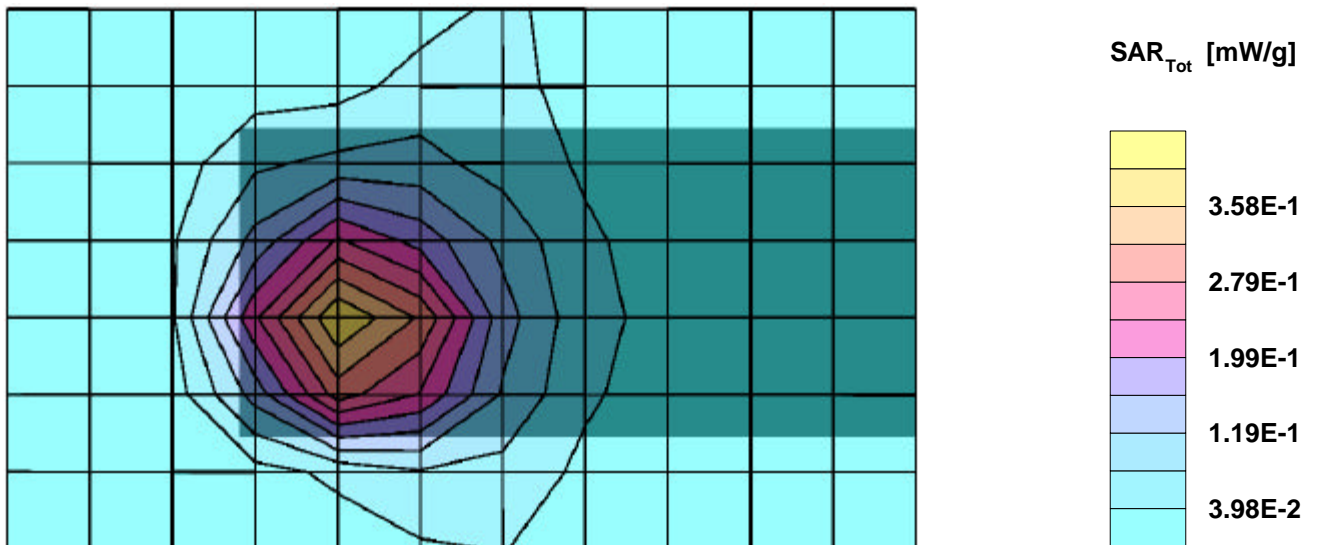
SAR:Cube 5x5x7: Peak: 0.782 mW/g, SAR (1g): 0.389 mW/g, SAR (10g): 0.198 mW/g, (Worst-case extrapolation)

Penetration depth: 6.8 (6.4, 7.8) [mm]; Powerdrift: -0.03 dB

Coarse: Dx = 14.0, Dy = 15.0, Dz = 0.0

Ambient Temperature (degree C): 22.0

Liquid Temperature (degree C): 20.0



12/23/02

## Ambit (Model 8460-05), Frequency: 2412 MHz (802.11b)

Frequency: 2450 MHz; Crest factor: 1.0

Medium: Muscle 2450 MHz:  $s = 2.09$  mho/m  $\epsilon_r = 50.5$   $\rho = 1.00$  g/cm<sup>3</sup>

SAM-1 Phantom; Section; Position:

Probe: ET3DV6 - SN1578; ConvF(4.10,4.10,4.10);

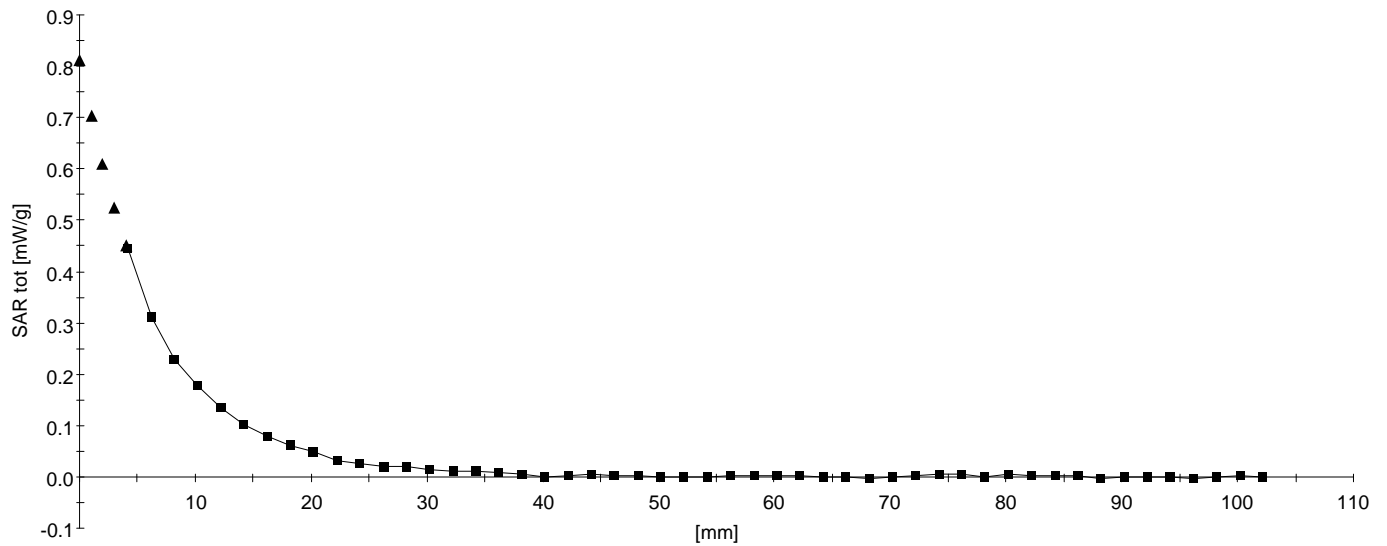
SAR: , , ()

Penetration depth: 6.7 (6.4, 7.6) [mm];

Z-Axis:  $D_x = 0.0$ ,  $D_y = 0.0$ ,  $D_z = 2.0$

Ambient Temperature (degree C): 22.0

Liquid Temperature (degree C): 20.0



12/23/02

## Ambit (Model 8460-05), Frequency: 2437 MHz (802.11b)

Frequency: 2450 MHz; Crest factor: 1.0

Medium: Muscle 2450 MHz:  $s = 2.09$  mho/m  $\epsilon_r = 50.5$   $\rho = 1.00$  g/cm<sup>3</sup>

SAM-1 Phantom; Flat Section; Position: (90°,90°)

Probe: ET3DV6 - SN1578; ConvF(4.10,4.10,4.10);

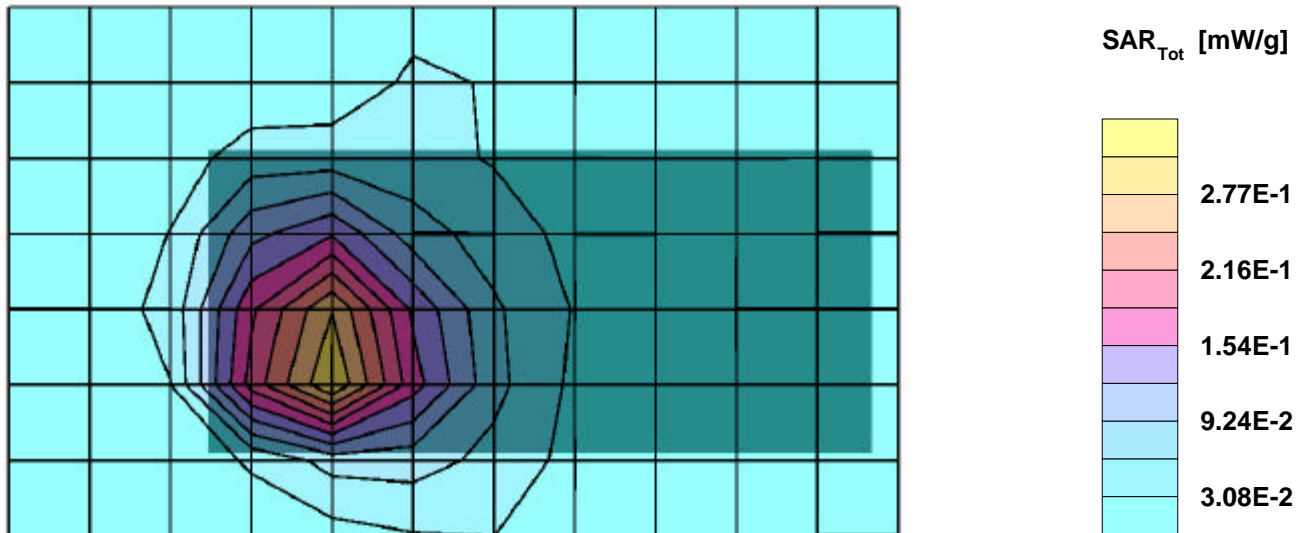
SAR:Cube 5x5x7: Peak: 0.623 mW/g, SAR (1g): 0.300 mW/g, SAR (10g): 0.148 mW/g, (Worst-case extrapolation)

Penetration depth: 6.5 (6.1, 7.5) [mm]; Powerdrift: -0.11 dB

Coarse: Dx = 14.0, Dy = 15.0, Dz = 0.0

Ambient Temperature (degree C): 22.0

Liquid Temperature (degree C): 20.0



12/23/02

## Ambit (Model 8460-05), Frequency: 2462 MHz (802.11b)

Frequency: 2450 MHz; Crest factor: 1.0

Medium: Muscle 2450 MHz:  $s = 2.09$  mho/m  $\epsilon_r = 50.5$   $\rho = 1.00$  g/cm<sup>3</sup>

SAM-1 Phantom; Flat Section; Position: (90°,90°)

Probe: ET3DV6 - SN1578; ConvF(4.10,4.10,4.10);

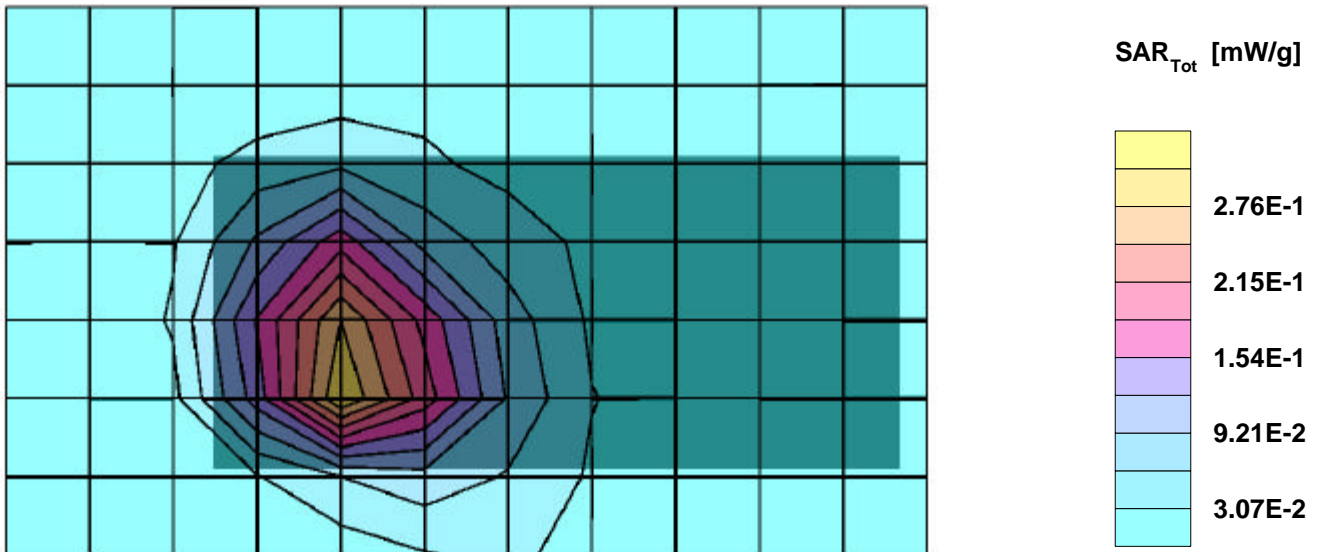
SAR:Cube 5x5x7: Peak: 0.620 mW/g, SAR (1g): 0.304 mW/g, SAR (10g): 0.148 mW/g, (Worst-case extrapolation)

Penetration depth: 6.4 (6.2, 6.9) [mm]; Powerdrift: 0.15 dB

Coarse: Dx = 14.0, Dy = 15.0, Dz = 0.0

Ambient Temperature (degree C): 22.0

Liquid Temperature (degree C): 20.0



12/23/02

## Ambit (Model 8460-05), Frequency: 2412 MHz (802.11g)

Frequency: 2450 MHz; Crest factor: 1.0

Medium: Muscle 2450 MHz:  $s = 2.09$  mho/m  $\epsilon_r = 50.5$   $\rho = 1.00$  g/cm<sup>3</sup>

SAM-1 Phantom; Flat Section; Position: (90°,90°)

Probe: ET3DV6 - SN1578; ConvF(4.10,4.10,4.10);

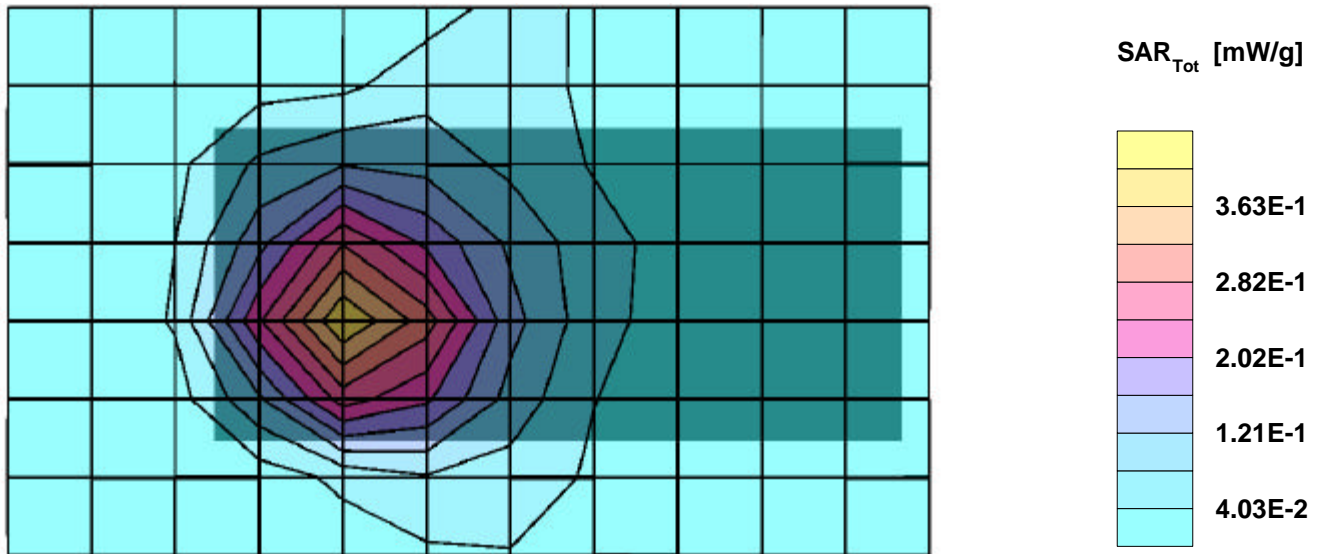
SAR:Cube 5x5x7: Peak: 0.816 mW/g, SAR (1g): 0.408 mW/g, SAR (10g): 0.208 mW/g, (Worst-case extrapolation)

Penetration depth: 6.8 (6.5, 7.6) [mm]; Powerdrift: 0.06 dB

Coarse: Dx = 14.0, Dy = 15.0, Dz = 0.0

Ambient Temperature (degree C): 22.0

Liquid Temperature (degree C): 20.0



12/23/02

## Ambit (Model 8460-05), Frequency: 2437 MHz (802.11g)

Frequency: 2450 MHz; Crest factor: 1.0

Medium: Muscle 2450 MHz:  $s = 2.09$  mho/m  $\epsilon_r = 50.5$   $\rho = 1.00$  g/cm<sup>3</sup>

SAM-1 Phantom; Flat Section; Position: (90°,90°)

Probe: ET3DV6 - SN1578; ConvF(4.10,4.10,4.10);

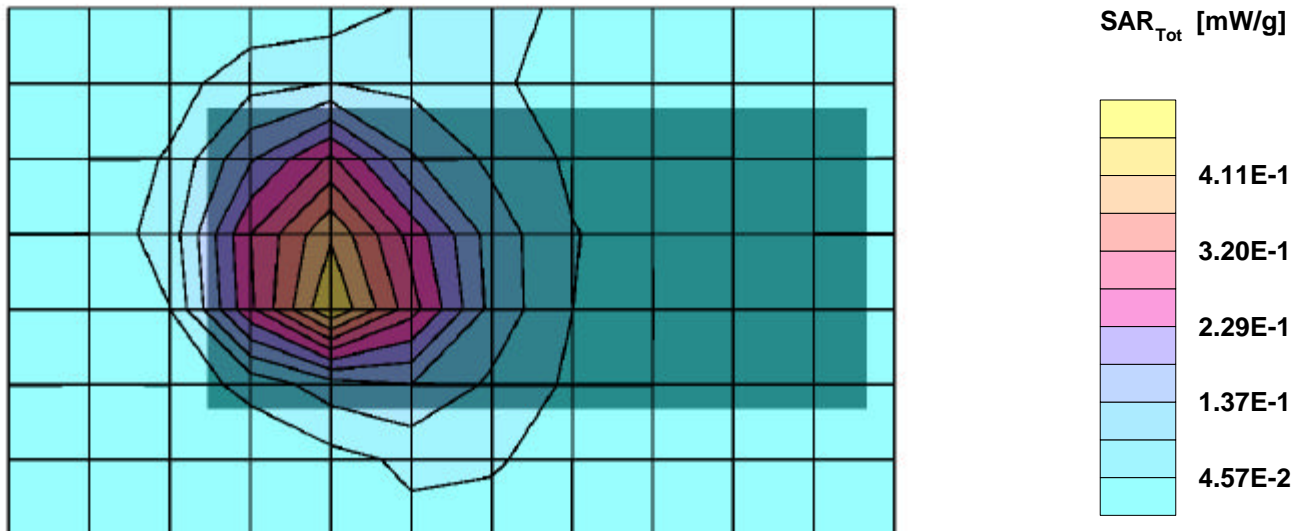
SAR:Cube 5x5x7: Peak: 0.923 mW/g, SAR (1g): 0.447 mW/g, SAR (10g): 0.223 mW/g, (Worst-case extrapolation)

Penetration depth: 6.6 (6.2, 7.7) [mm]; Powerdrift: -0.13 dB

Coarse: Dx = 14.0, Dy = 15.0, Dz = 0.0

Ambient Temperature (degree C): 22.0

Liquid Temperature (degree C): 20.0



12/23/02

## Ambit (Model 8460-05), Frequency: 2437 MHz (802.11g)

Frequency: 2450 MHz; Crest factor: 1.0

Medium: Muscle 2450 MHz;  $\sigma = 2.09$  mho/m  $\epsilon_r = 50.5$   $\rho = 1.00$  g/cm<sup>3</sup>

SAM-1 Phantom; Section; Position:

Probe: ET3DV6 - SN1578; ConvF(4.10,4.10,4.10);

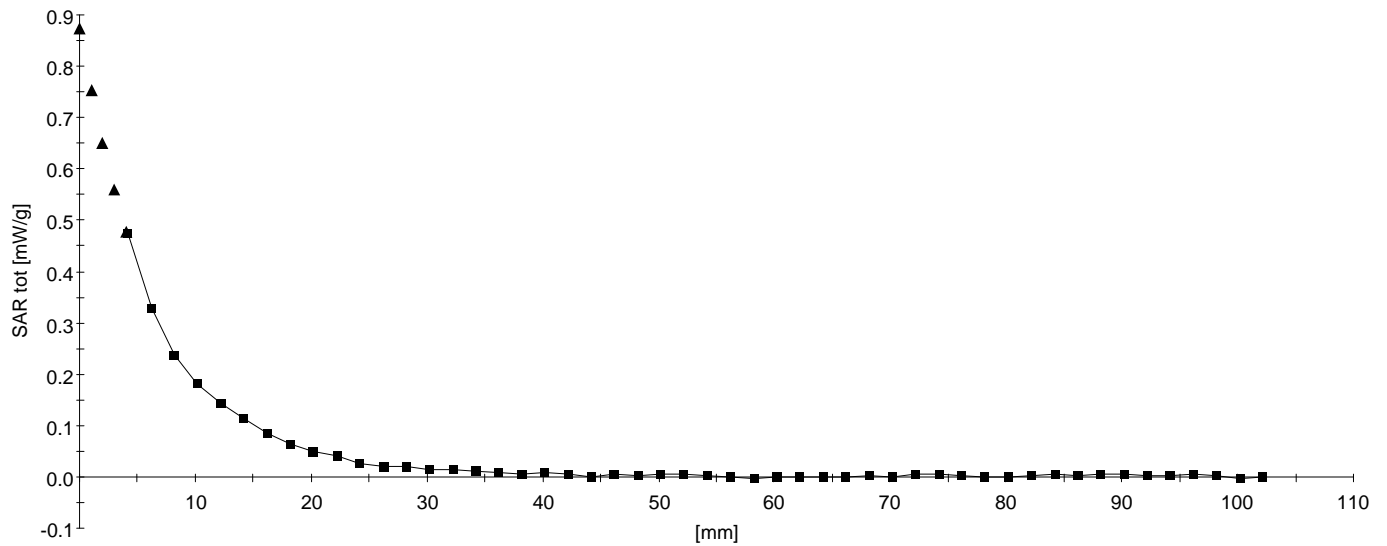
SAR: , , ()

Penetration depth: 6.8 (6.3, 7.9) [mm];

Z-Axis: Dx = 0.0, Dy = 0.0, Dz = 2.0

Ambient Temperature (degree C): 22.0

Liquid Temperature (degree C): 20.0



12/23/02

## Ambit (Model 8460-05), Frequency: 2462 MHz (802.11g)

Frequency: 2450 MHz; Crest factor: 1.0

Medium: Muscle 2450 MHz:  $s = 2.09$  mho/m  $\epsilon_r = 50.5$   $\rho = 1.00$  g/cm<sup>3</sup>

SAM-1 Phantom; Flat Section; Position: (90°,90°)

Probe: ET3DV6 - SN1578; ConvF(4.10,4.10,4.10);

SAR:Cube 5x5x7: Peak: 0.662 mW/g, SAR (1g): 0.324 mW/g, SAR (10g): 0.163 mW/g, (Worst-case extrapolation)

Penetration depth: 6.4 (6.1, 7.3) [mm]; Powerdrift: 0.16 dB

Coarse: Dx = 14.0, Dy = 15.0, Dz = 0.0

Ambient Temperature (degree C): 22.0

Liquid Temperature (degree C): 20.0

