

System Validation - D2450V2 S/N:706

(Antenna input power: 250 mW)

SAM-2; Flat

Probe: ET3DV6 - SN1578; ConvF(4.50,4.50,4.50); Crest factor: 1.0

Head 2450MHz: $\sigma = 1.96$ mho/m $\epsilon_r = 38.0$ $\rho = 1.00$ g/cm³

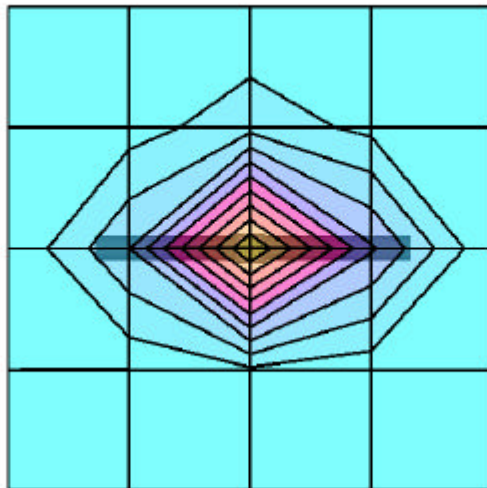
Cube 5x5x7: Peak: 28.9 mW/g, SAR (1g): 13.9 mW/g, SAR (10g): 6.33 mW/g, (Worst-case extrapolation)

Penetration depth: 6.3 (6.1, 6.8) [mm]

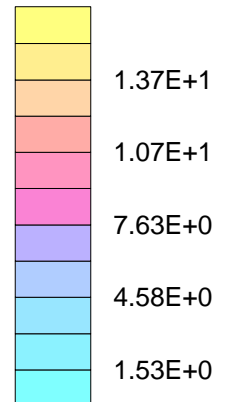
Powerdrift: 0.00 dB

Ambient Temperature (degree C): 22.0

Liquid Temperature (degree C): 20.4



SAR_{Tot} [mW/g]



System Validation - D2450V2 S/N:706

(Antenna input power: 250 mW)

SAM-2;

Probe: ET3DV6 - SN1578; ConvF(4.50,4.50,4.50); Crest factor: 1.0

Head 2450MHz: $\sigma = 1.96 \text{ mho/m}$ $\epsilon_r = 38.0$ $\rho = 1.00 \text{ g/cm}^3$

: , , ()

Penetration depth: 6.3 (6.0, 6.9) [mm]

Ambient Temperature (degree C): 22.0

Liquid Temperature (degree C): 20.4

