

08/09/02

Proxim_8460; Flat position; Frequency: 2412 MHz

Frequency: 2450 MHz; Crest factor: 1.0

Medium: Muscle 2450 MHz: $s = 2.04$ mho/m $\epsilon_r = 50.8$ $\rho = 1.00$ g/cm³

SAM-1 Phantom; Flat Section; Position: (90°,90°)

Probe: ET3DV6 - SN1578; ConvF(4.10,4.10,4.10);

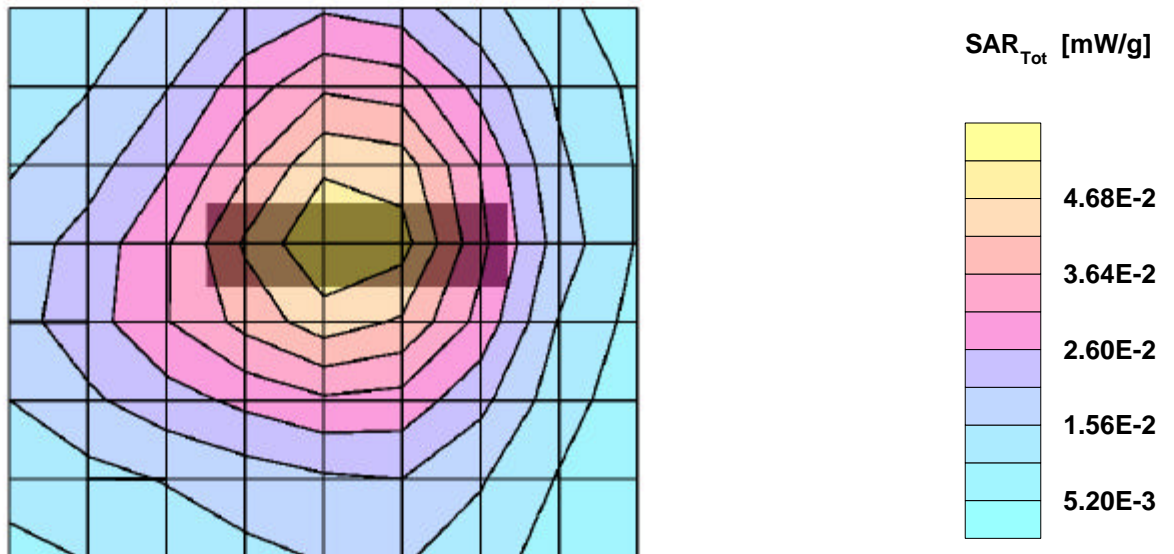
SAR:Cube 5x5x7: Peak: 0.0949 mW/g, SAR (1g): 0.0506 mW/g, SAR (10g): 0.0294 mW/g, (Worst-case extrapolation)

Penetration depth: 8.1 (7.2, 9.8) [mm]; Powerdrift: -0.01 dB

Coarse: Dx = 14.0, Dy = 14.0, Dz = 10.0

Ambient Temperature (degree C): 22.5

Liquid Temperature (degree C): 21.2



08/09/02

Proxim_8460; Flat position; Frequency: 2412 MHz

Frequency: 2450 MHz; Crest factor: 1.0

Medium: Muscle 2450 MHz: $s = 2.04$ mho/m $\epsilon_r = 50.8$ $\rho = 1.00$ g/cm³

SAM-1 Phantom; Section; Position:

Probe: ET3DV6 - SN1578; ConvF(4.10,4.10,4.10);

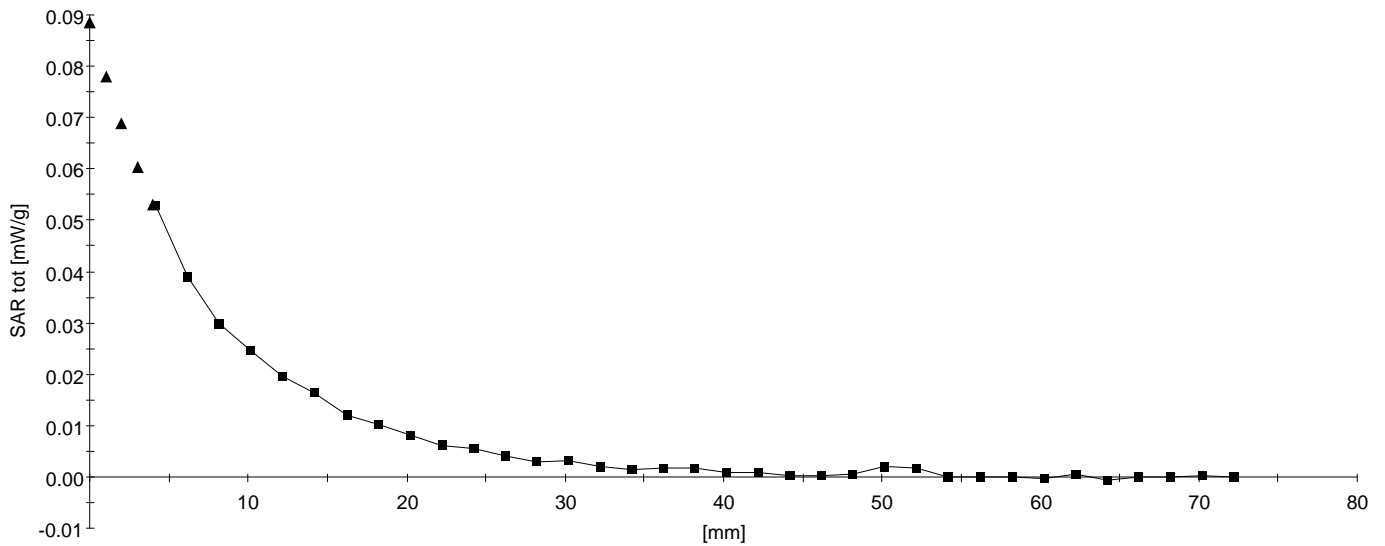
SAR: , , ()

Penetration depth: 8.2 (7.7, 9.2) [mm];

Z-Axis: Dx = 0.0, Dy = 0.0, Dz = 2.0

Ambient Temperature (degree C): 22.5

Liquid Temperature (degree C): 21.2



08/09/02

Proxim_8460; Flat position; Frequency: 2437 MHz

Frequency: 2450 MHz; Crest factor: 1.0

Medium: Muscle 2450 MHz: $s = 2.04$ mho/m $\epsilon_r = 50.8$ $\rho = 1.00$ g/cm³

SAM-1 Phantom; Flat Section; Position: (90°,90°)

Probe: ET3DV6 - SN1578; ConvF(4.10,4.10,4.10);

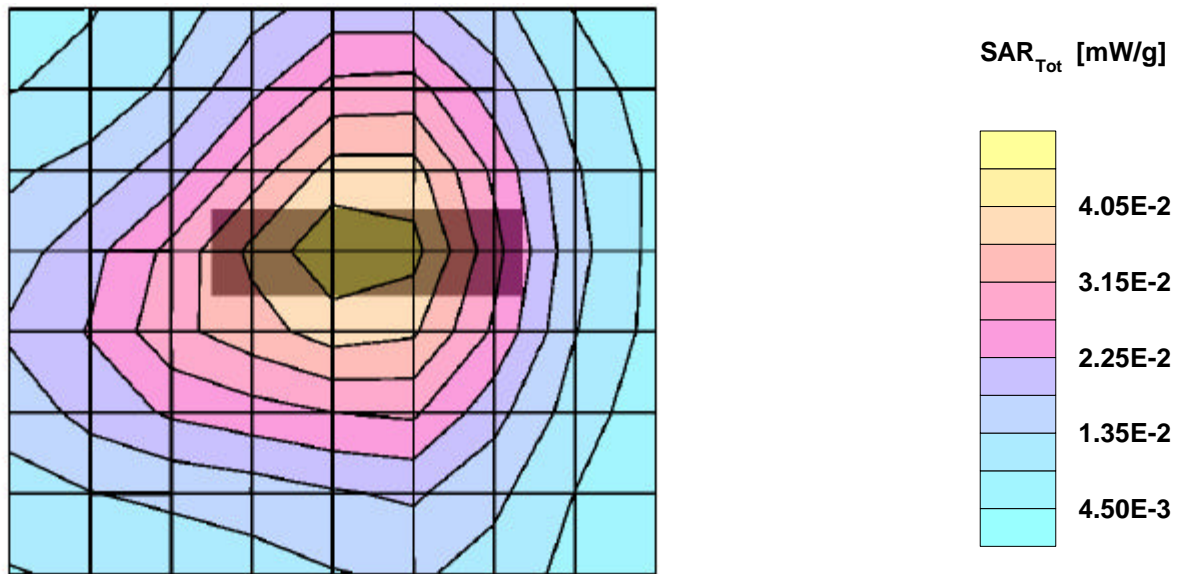
SAR:Cube 5x5x7: Peak: 0.0797 mW/g, SAR (1g): 0.0428 mW/g, SAR (10g): 0.0248 mW/g, (Worst-case extrapolation)

Penetration depth: 8.0 (7.2, 9.4) [mm]; Powerdrift: -0.02 dB

Coarse: Dx = 14.0, Dy = 14.0, Dz = 10.0

Ambient Temperature (degree C): 22.5

Liquid Temperature (degree C): 20.9



08/09/02

Proxim_8460; Flat position; Frequency: 2437 MHz

Frequency: 2450 MHz; Crest factor: 1.0

Medium: Muscle 2450 MHz: $s = 2.04$ mho/m $\epsilon_r = 50.8$ $\rho = 1.00$ g/cm³

SAM-1 Phantom; Section; Position:

Probe: ET3DV6 - SN1578; ConvF(4.10,4.10,4.10);

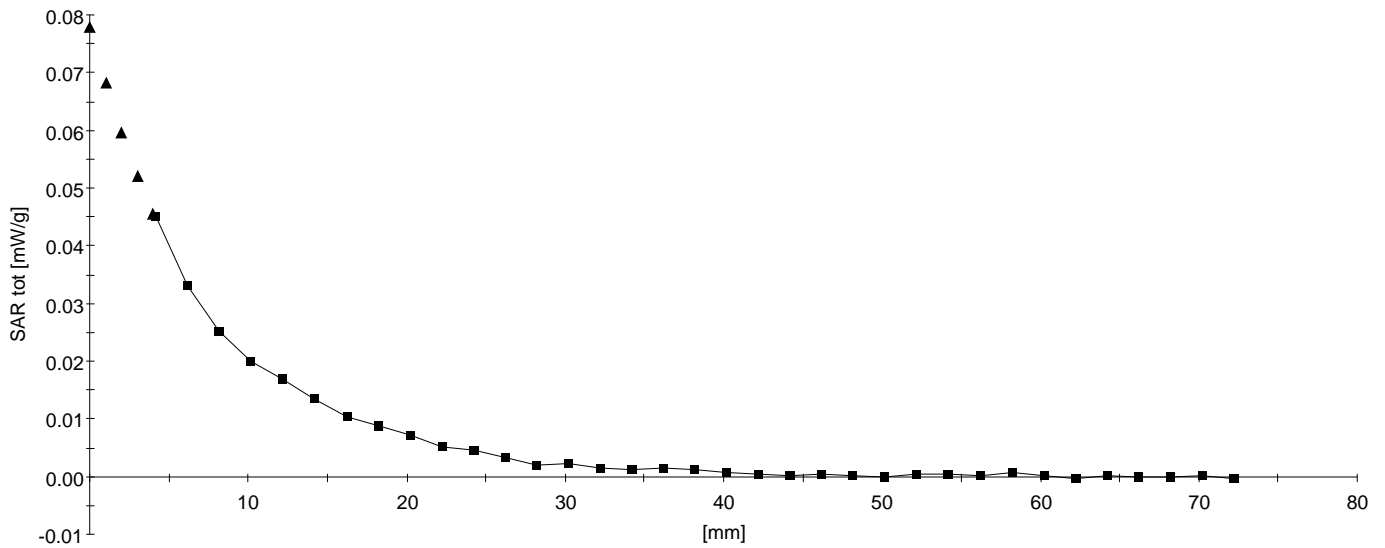
SAR: , , ()

Penetration depth: 8.2 (7.4, 9.6) [mm];

Z-Axis: Dx = 0.0, Dy = 0.0, Dz = 2.0

Ambient Temperature (degree C): 22.5

Liquid Temperature (degree C): 20.9



08/09/02

Proxim_8460; Flat position; Frequency: 2462 MHz

Frequency: 2450 MHz; Crest factor: 1.0

Medium: Muscle 2450 MHz: $s = 2.04$ mho/m $\epsilon_r = 50.8$ $\rho = 1.00$ g/cm³

SAM-1 Phantom; Flat Section; Position: (90°,90°)

Probe: ET3DV6 - SN1578; ConvF(4.10,4.10,4.10);

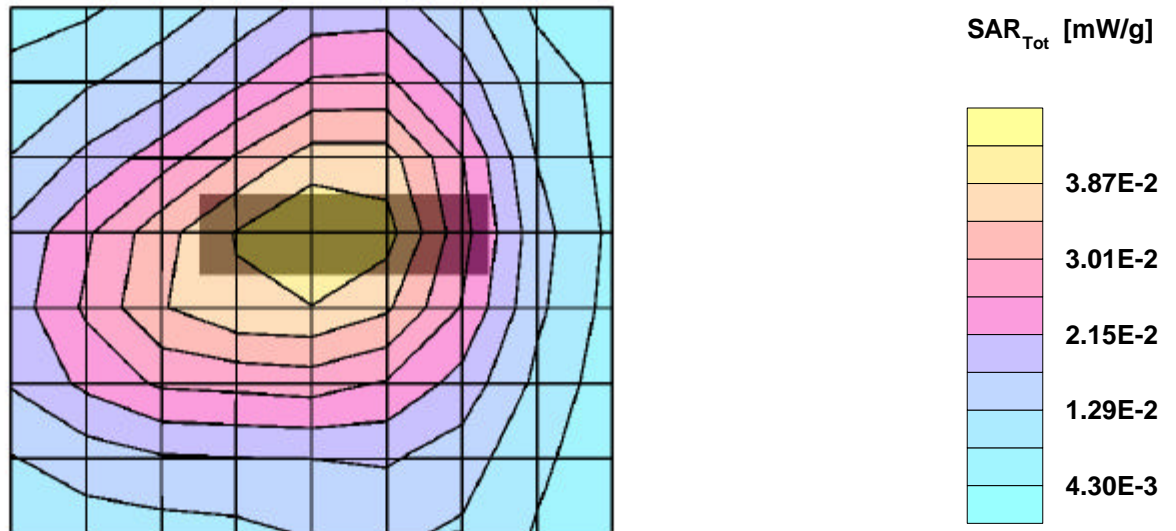
SAR:Cube 5x5x7: Peak: 0.0780 mW/g, SAR (1g): 0.0416 mW/g, SAR (10g): 0.0242 mW/g, (Worst-case extrapolation)

Penetration depth: 7.6 (7.1, 8.5) [mm]; Powerdrift: 0.03 dB

Coarse: Dx = 14.0, Dy = 14.0, Dz = 10.0

Ambient Temperature (degree C): 22.5

Liquid Temperature (degree C): 20.8



08/09/02

Proxim_8460; Flat position; Frequency: 2462 MHz

Frequency: 2450 MHz; Crest factor: 1.0

Medium: Muscle 2450 MHz: $s = 2.04$ mho/m $\epsilon_r = 50.8$ $\rho = 1.00$ g/cm³

SAM-1 Phantom; Section; Position:

Probe: ET3DV6 - SN1578; ConvF(4.10,4.10,4.10);

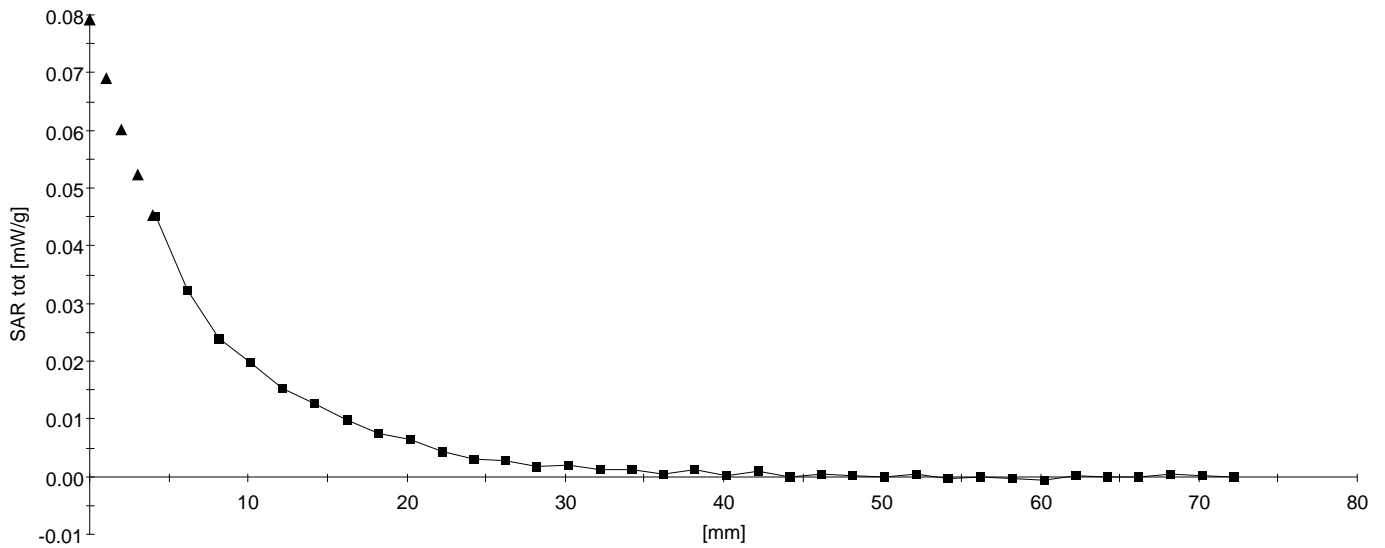
SAR: , , ()

Penetration depth: 7.7 (7.0, 8.9) [mm];

Z-Axis: Dx = 0.0, Dy = 0.0, Dz = 2.0

Ambient Temperature (degree C): 22.5

Liquid Temperature (degree C): 20.8



08/09/02

Proxim_8460; Flat position; Frequency: 2412MHz

Frequency: 2450 MHz; Crest factor: 1.0

Medium: Muscle 2450 MHz: $s = 2.04$ mho/m $\epsilon_r = 50.8$ $\rho = 1.00$ g/cm³

SAM-1 Phantom; Flat Section; Position: (90°,90°)

Probe: ET3DV6 - SN1578; ConvF(4.10,4.10,4.10);

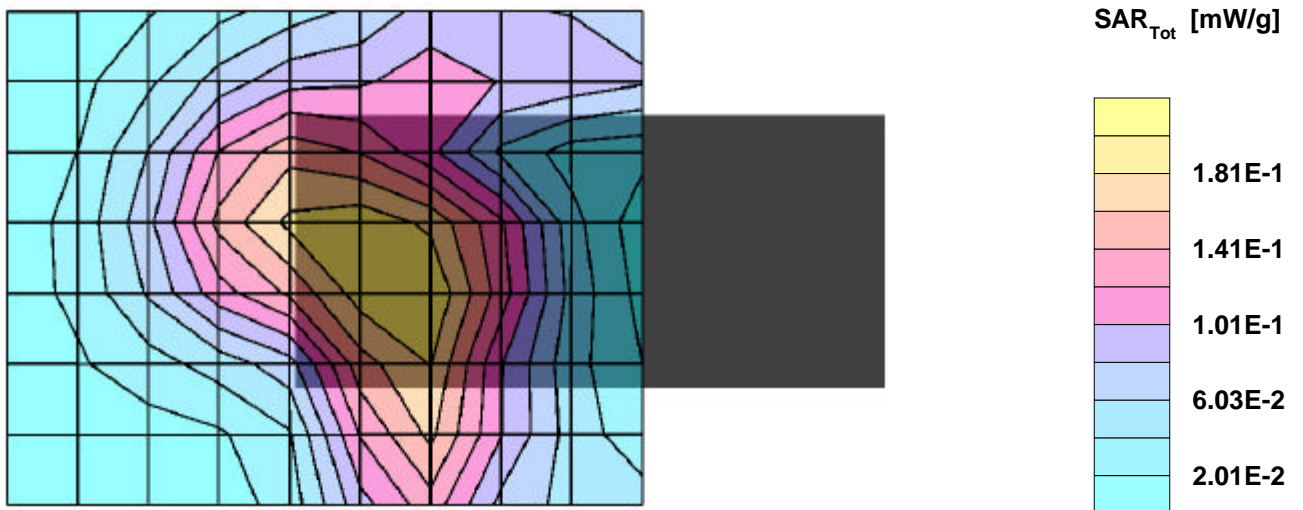
SAR:Cube 5x5x7: Peak: 0.353 mW/g, SAR (1g): 0.195 mW/g, SAR (10g): 0.115 mW/g, (Worst-case extrapolation)

Penetration depth: 8.4 (7.8, 9.6) [mm]; Powerdrift: 0.03 dB

Coarse: Dx = 14.0, Dy = 14.0, Dz = 10.0

Ambient Temperature (degree C): 22.5

Liquid Temperature (degree C): 20.6



08/09/02

Proxim_8460; Flat position; Frequency: 2412MHz

Frequency: 2450 MHz; Crest factor: 1.0

Medium: Muscle 2450 MHz: $s = 2.04$ mho/m $\epsilon_r = 50.8$ $\rho = 1.00$ g/cm³

SAM-1 Phantom; Section; Position:

Probe: ET3DV6 - SN1578; ConvF(4.10,4.10,4.10);

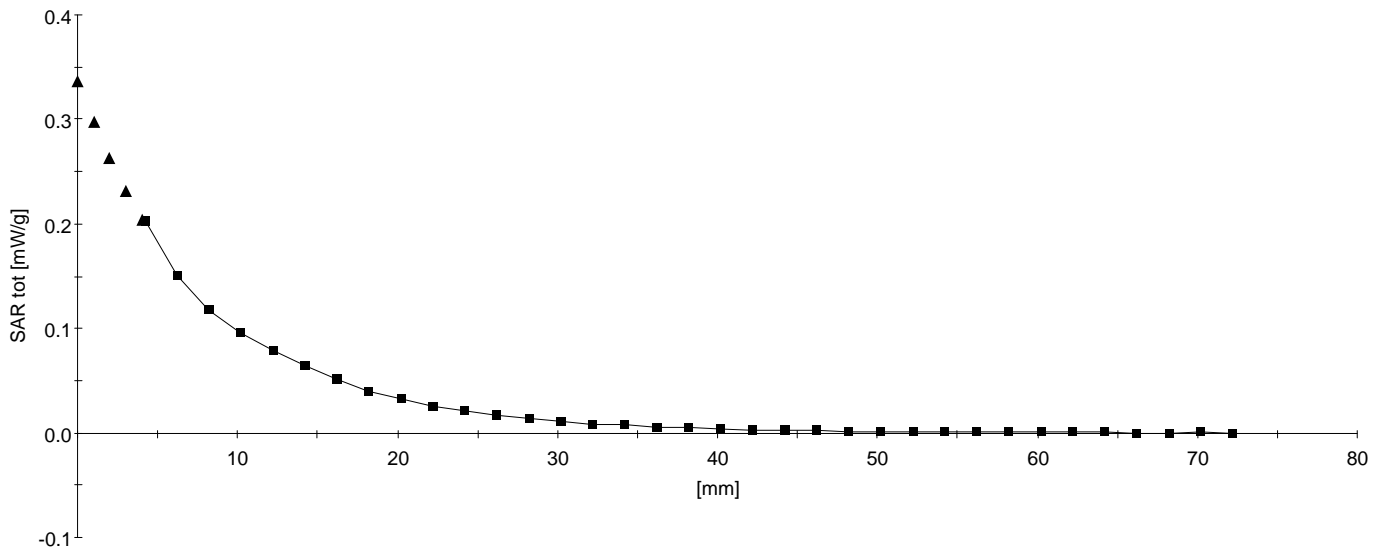
SAR: , , ()

Penetration depth: 8.5 (7.9, 9.6) [mm];

Z-Axis: Dx = 0.0, Dy = 0.0, Dz = 2.0

Ambient Temperature (degree C): 22.5

Liquid Temperature (degree C): 20.6



08/09/02

Proxim_8460; Flat position; Frequency: 2437MHz

Frequency: 2450 MHz; Crest factor: 1.0

Medium: Muscle 2450 MHz: $s = 2.04$ mho/m $\epsilon_r = 50.8$ $\rho = 1.00$ g/cm³

SAM-1 Phantom; Flat Section; Position: (90°,90°)

Probe: ET3DV6 - SN1578; ConvF(4.10,4.10,4.10);

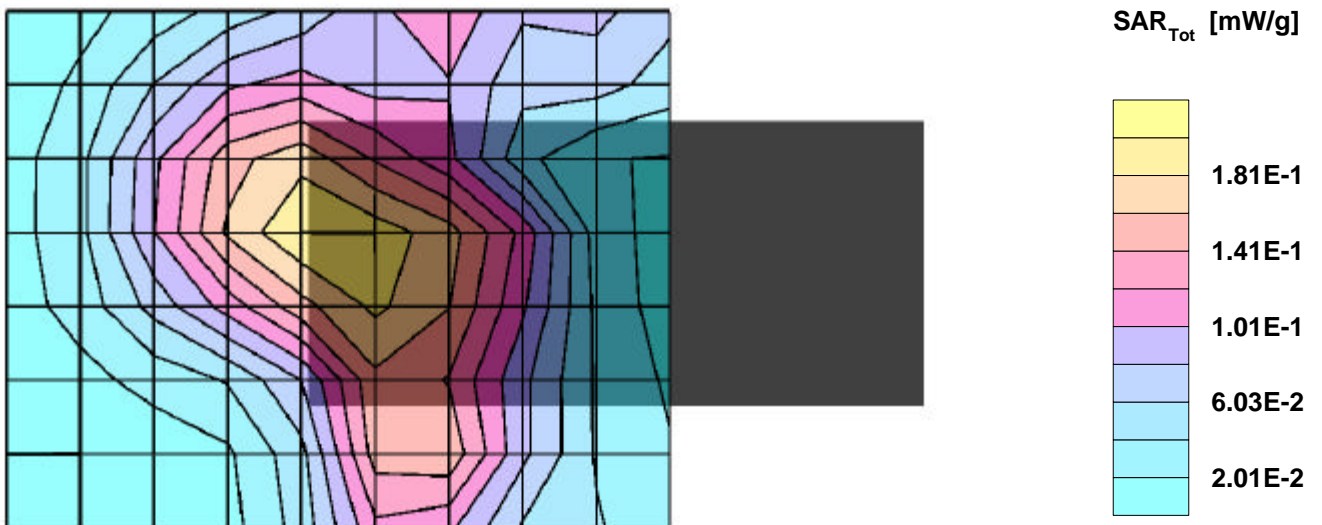
SAR:Cube 5x5x7: Peak: 0.361 mW/g, SAR (1g): 0.194 mW/g, SAR (10g): 0.111 mW/g, (Worst-case extrapolation)

Penetration depth: 7.8 (7.2, 9.0) [mm]; Powerdrift: -0.03 dB

Coarse: Dx = 14.0, Dy = 14.0, Dz = 10.0

Ambient Temperature (degree C): 22.5

Liquid Temperature (degree C): 20.6



08/09/02

Proxim_8460; Flat position; Frequency: 2437MHz

Frequency: 2450 MHz; Crest factor: 1.0

Medium: Muscle 2450 MHz: $s = 2.04$ mho/m $\epsilon_r = 50.8$ $\rho = 1.00$ g/cm³

SAM-1 Phantom; Section; Position:

Probe: ET3DV6 - SN1578; ConvF(4.10,4.10,4.10);

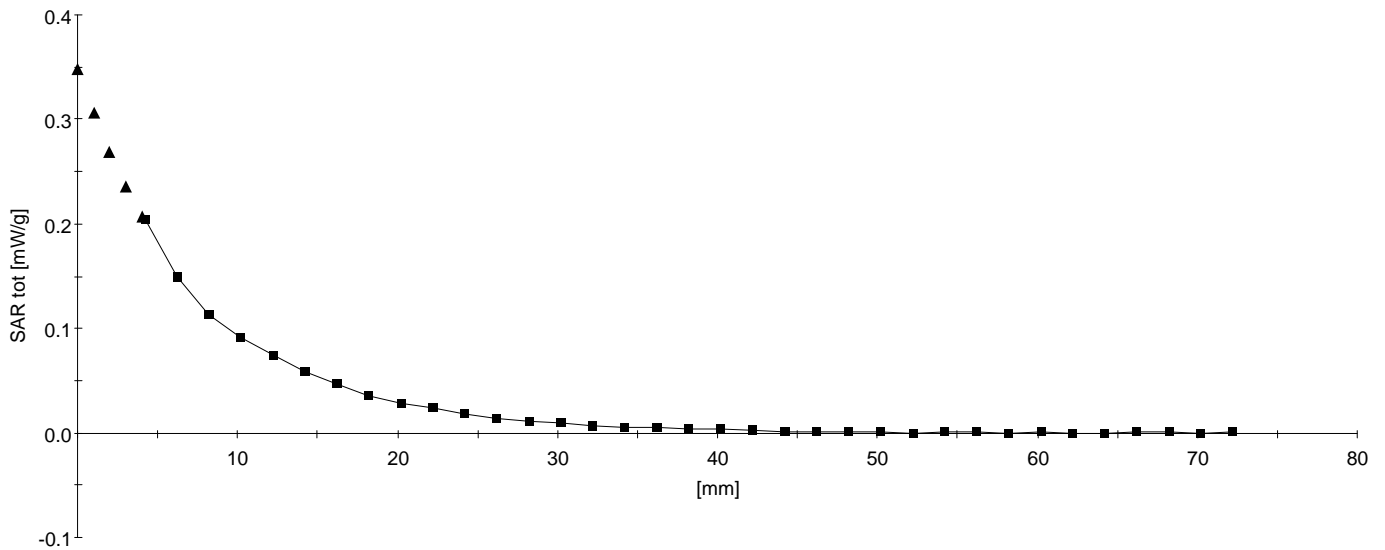
SAR: , , ()

Penetration depth: 7.9 (7.4, 8.9) [mm];

Z-Axis: Dx = 0.0, Dy = 0.0, Dz = 2.0

Ambient Temperature (degree C): 22.5

Liquid Temperature (degree C): 20.6



08/09/02

Proxim_8460; Flat position; Frequency: 2462MHz

Frequency: 2450 MHz; Crest factor: 1.0

Medium: Muscle 2450 MHz: $s = 2.04$ mho/m $\epsilon_r = 50.8$ $\rho = 1.00$ g/cm³

SAM-1 Phantom; Flat Section; Position: (90°,90°)

Probe: ET3DV6 - SN1578; ConvF(4.10,4.10,4.10);

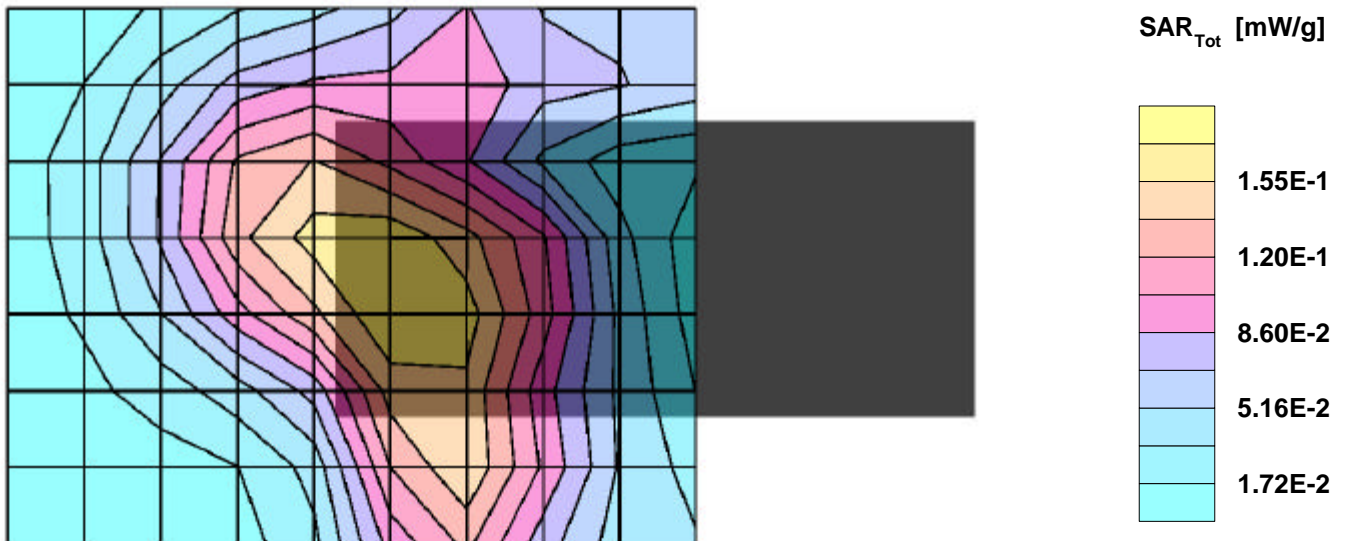
SAR:Cube 5x5x7: Peak: 0.310 mW/g, SAR (1g): 0.168 mW/g, SAR (10g): 0.0979 mW/g, (Worst-case extrapolation)

Penetration depth: 7.7 (7.3, 8.6) [mm]; Powerdrift: 0.08 dB

Coarse: Dx = 14.0, Dy = 14.0, Dz = 10.0

Ambient Temperature (degree C): 22.5

Liquid Temperature (degree C): 20.5



08/09/02

Proxim_8460; Flat position; Frequency: 2462MHz

Frequency: 2450 MHz; Crest factor: 1.0

Medium: Muscle 2450 MHz: $s = 2.04$ mho/m $\epsilon_r = 50.8$ $\rho = 1.00$ g/cm³

SAM-1 Phantom; Section; Position:

Probe: ET3DV6 - SN1578; ConvF(4.10,4.10,4.10);

SAR: , , ()

Penetration depth: 7.8 (7.3, 8.8) [mm];

Z-Axis: $D_x = 0.0$, $D_y = 0.0$, $D_z = 2.0$

Ambient Temperature (degree C): 22.5

Liquid Temperature (degree C): 20.5

