

APPENDIX 3: Photographs of test setup

Radiated Emission
(Below 30 MHz)

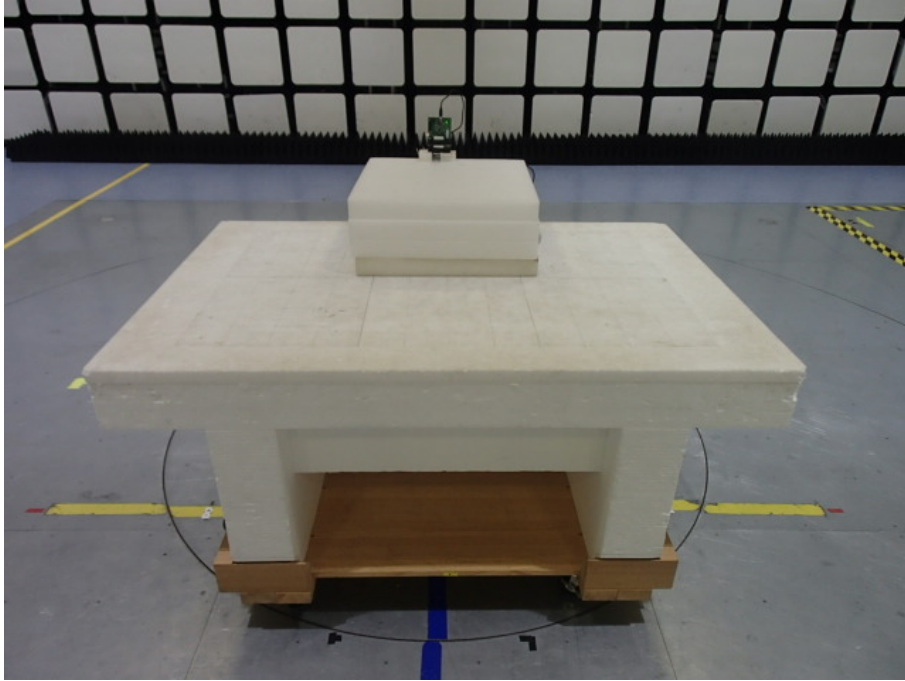


Photo 1

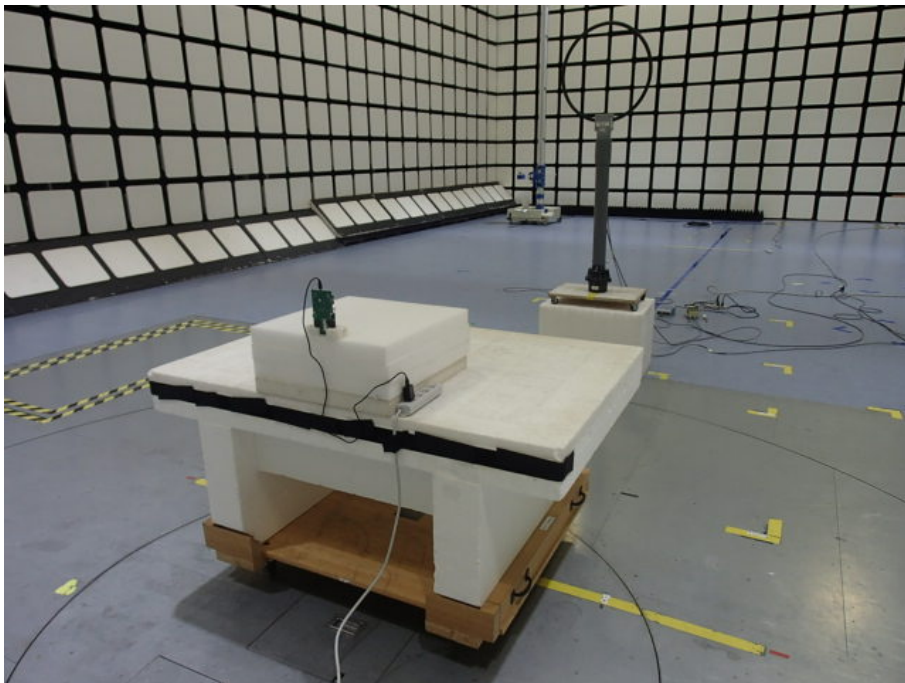


Photo 2

UL Japan, Inc.

Ise EMC Lab.

4383-326 Asama-cho, Ise-shi, Mie-ken 516-0021 JAPAN

Telephone : +81 596 24 8999

Facsimile : +81 596 24 8124

Radiated Emission
(Above 30 MHz)

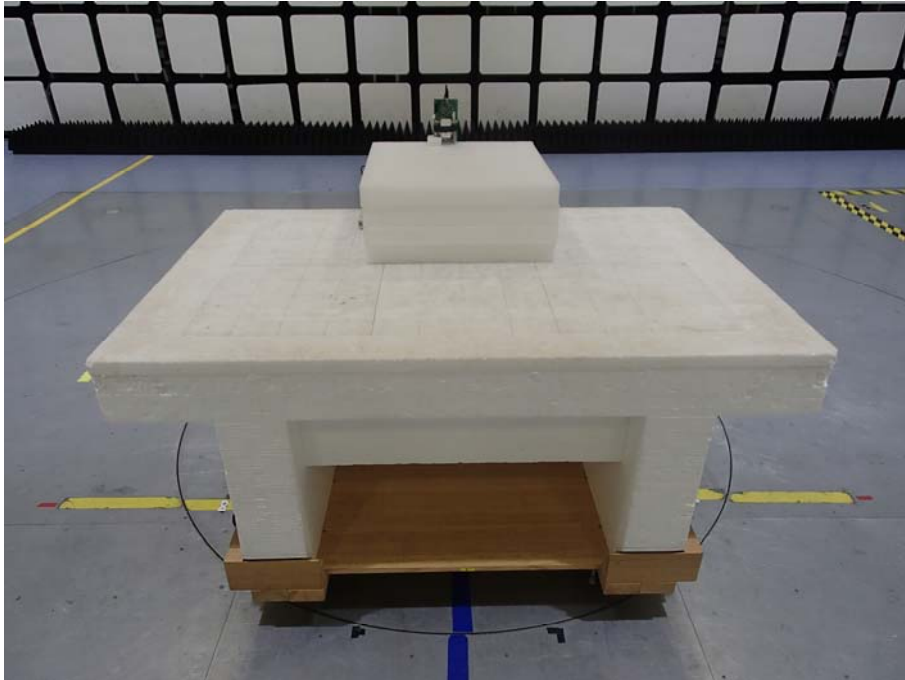


Photo 1

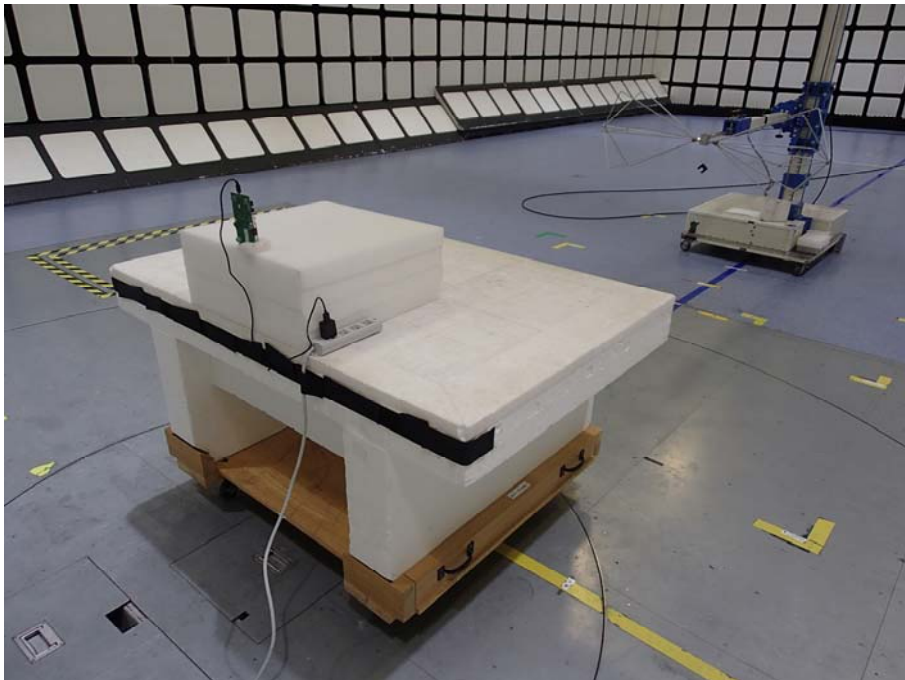


Photo 2

UL Japan, Inc.

Ise EMC Lab.

4383-326 Asama-cho, Ise-shi, Mie-ken 516-0021 JAPAN

Telephone : +81 596 24 8999

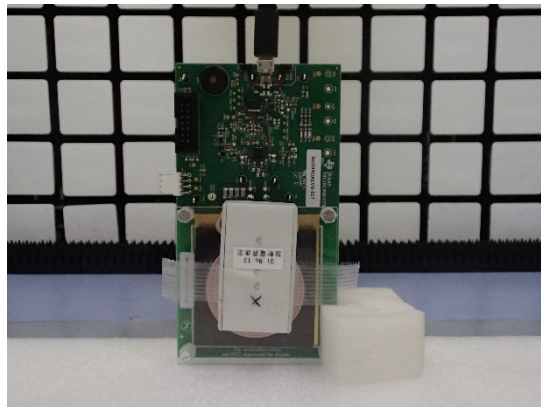
Facsimile : +81 596 24 8124

Worst Case Position

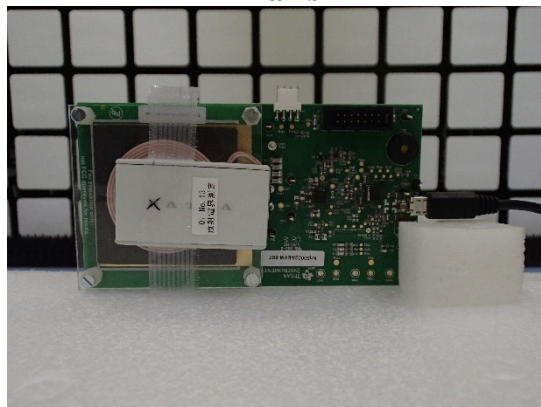
Below 30 MHz:
Y-axis
Above 30 MHz:
(Horizontal: Y-axis / Vertical: Z-axis)
X-axis



Y-axis



Z-axis



End of Report

UL Japan, Inc.

Ise EMC Lab.

4383-326 Asama-cho, Ise-shi, Mie-ken 516-0021 JAPAN

Telephone : +81 596 24 8999

Facsimile : +81 596 24 8124