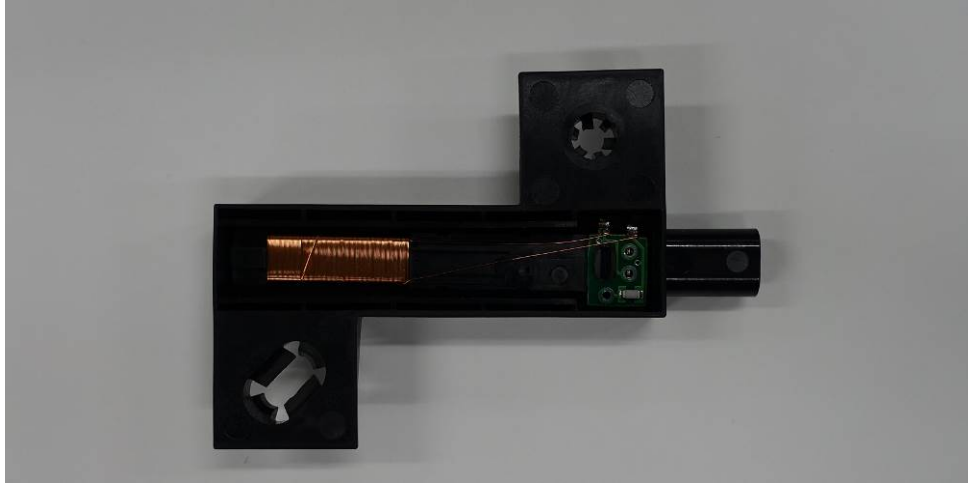


**DENSO CORPORATION**  
**Passive Entry Passive Start System (LF Transmitter)**  
**FCC ID: HYQU22B0**  
**IC Number: 1551A-U22B0**

**Internal Photos (ANT1, ANT2)**

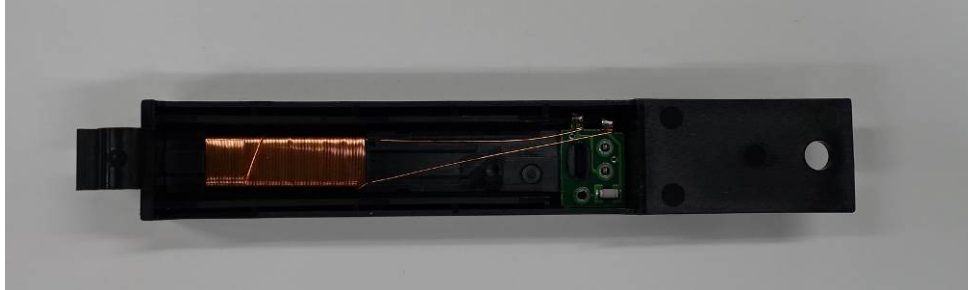


Note:

“Hi-L” is equivalent with ANT1, ANT2, and ANT4.

**DENSO CORPORATION**  
**Passive Entry Passive Start System (LF Transmitter)**  
**FCC ID: HYQU22B0**  
**IC Number: 1551A-U22B0**

**Internal Photos (ANT4)**



Note:

“Hi-L” is equivalent with ANT1, ANT2, and ANT4.

**DENSO CORPORATION**  
**Passive Entry Passive Start System (LF Transmitter)**  
**FCC ID: HYQU22B0**  
**IC Number: 1551A-U22B0**

Internal Photos (ANT3, ANT5)

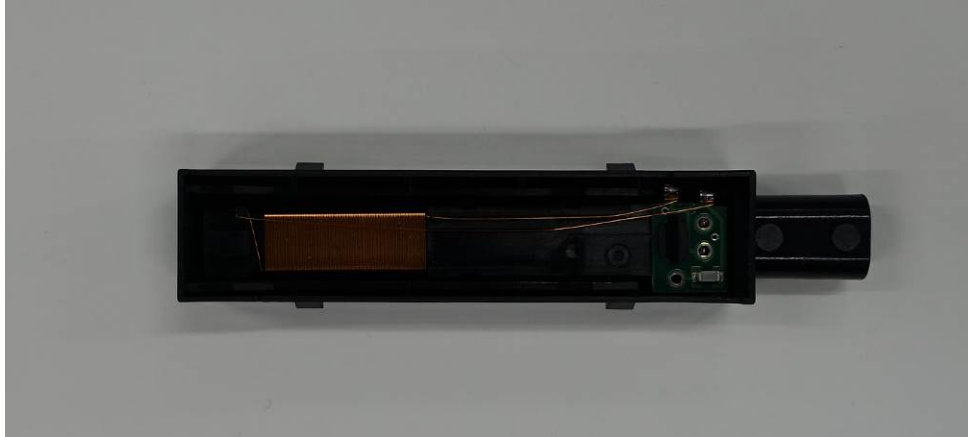


Note:

“Normal-L” is equivalent with ANT3, ANT5, and ANT6.

**DENSO CORPORATION**  
**Passive Entry Passive Start System (LF Transmitter)**  
**FCC ID: HYQU22B0**  
**IC Number: 1551A-U22B0**

**Internal Photos (ANT6)**



**Note:**

“Normal-L” is equivalent with ANT3, ANT5, and ANT6.