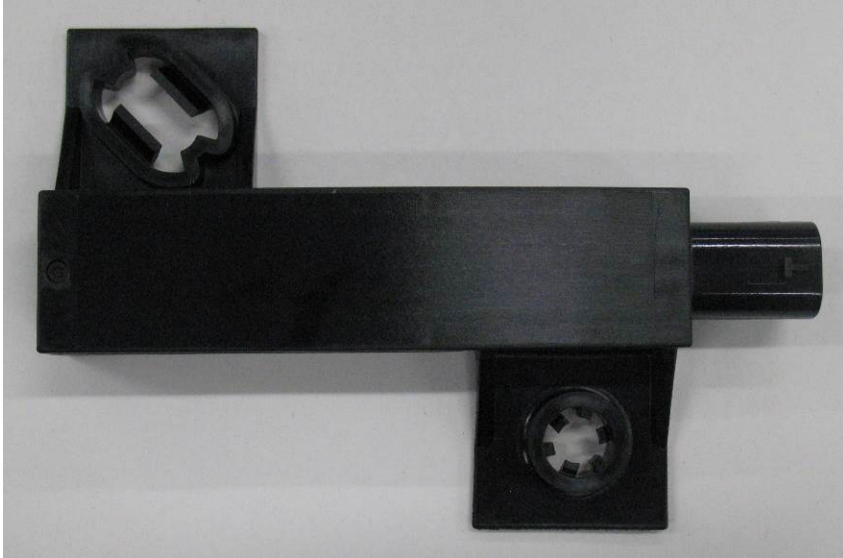
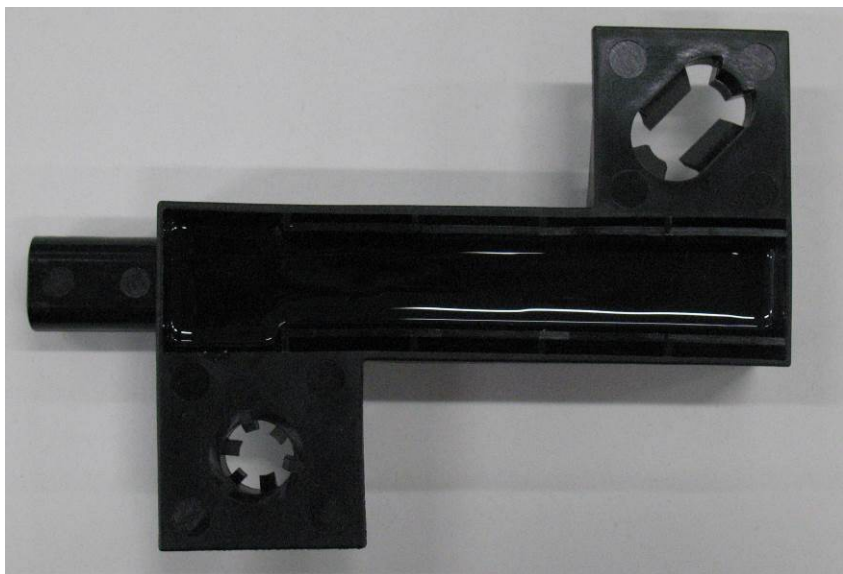


DENSO CORPORATION
Passive Entry Passive Start System (LF Transmitter)
FCC ID: HYQU22B0
IC Number: 1551A-U22B0

External Photos (ANT1, ANT2) 1/2



Front



Rear

Note:

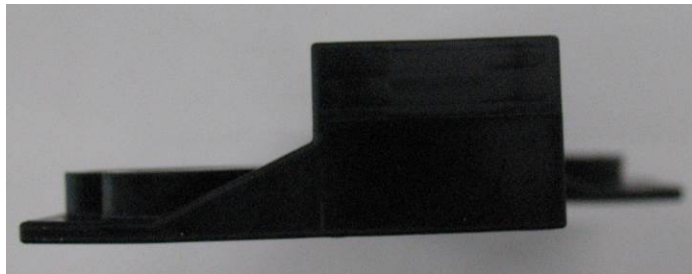
"Hi-L" is equivalent with ANT1, ANT2, and ANT4.

DENSO CORPORATION
Passive Entry Passive Start System (LF Transmitter)
FCC ID: HYQU22B0
IC Number: 1551A-U22B0

External Photos (ANT1, ANT2) 2/2



Top



Bottom



Right



Left

DENSO CORPORATION
Passive Entry Passive Start System (LF Transmitter)
FCC ID: HYQU22B0
IC Number: 1551A-U22B0

External Photos (ANT4) 1/2



Front



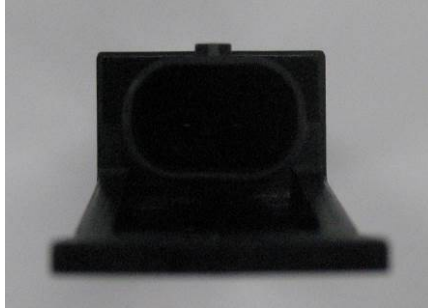
Rear

Note:

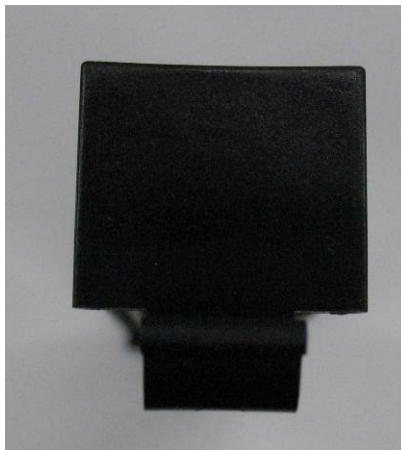
“Hi-L” is equivalent with ANT1, ANT2, and ANT4.

DENSO CORPORATION
Passive Entry Passive Start System (LF Transmitter)
FCC ID: HYQU22B0
IC Number: 1551A-U22B0

External Photos (ANT4) 2/2



Top



Bottom



Right



Left

DENSO CORPORATION
Passive Entry Passive Start System (LF Transmitter)
FCC ID: HYQU22B0
IC Number: 1551A-U22B0

External Photos (ANT3, ANT5) 1/2



Front



Rear

Note:

“Normal-L” is equivalent with ANT3, ANT5, and ANT6.

DENSO CORPORATION
Passive Entry Passive Start System (LF Transmitter)
FCC ID: HYQU22B0
IC Number: 1551A-U22B0

External Photos (ANT3, ANT5) 2/2



Top



Bottom



Right



Left

DENSO CORPORATION
Passive Entry Passive Start System (LF Transmitter)
FCC ID: HYQU22B0
IC Number: 1551A-U22B0

External Photos (ANT6) 1/2



Front



Rear

Note:

“Normal-L” is equivalent with ANT3, ANT5, and ANT6.

DENSO CORPORATION
Passive Entry Passive Start System (LF Transmitter)
FCC ID: HYQU22B0
IC Number: 1551A-U22B0

External Photos (ANT6) 2/2



Top



Bottom



Right



Left

DENSO CORPORATION
Passive Entry Passive Start System (LF Transmitter)
FCC ID: HYQU22B0
IC Number: 1551A-U22B0

Antenna Connection

