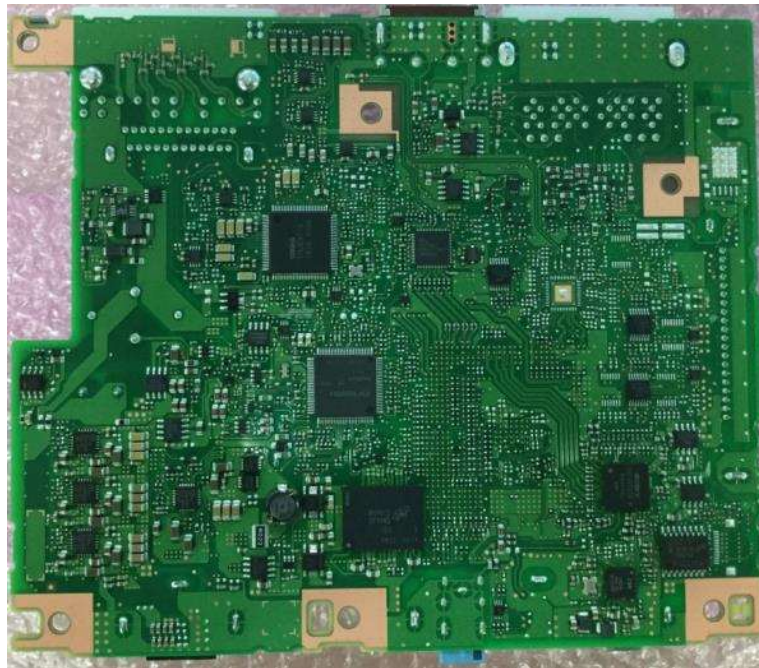


**DENSO CORPORATION**  
**Cockpit Control Unit**  
**Model: DNNS111**

**Internal Photos**



**Component Side (Cockpit Control Unit)**

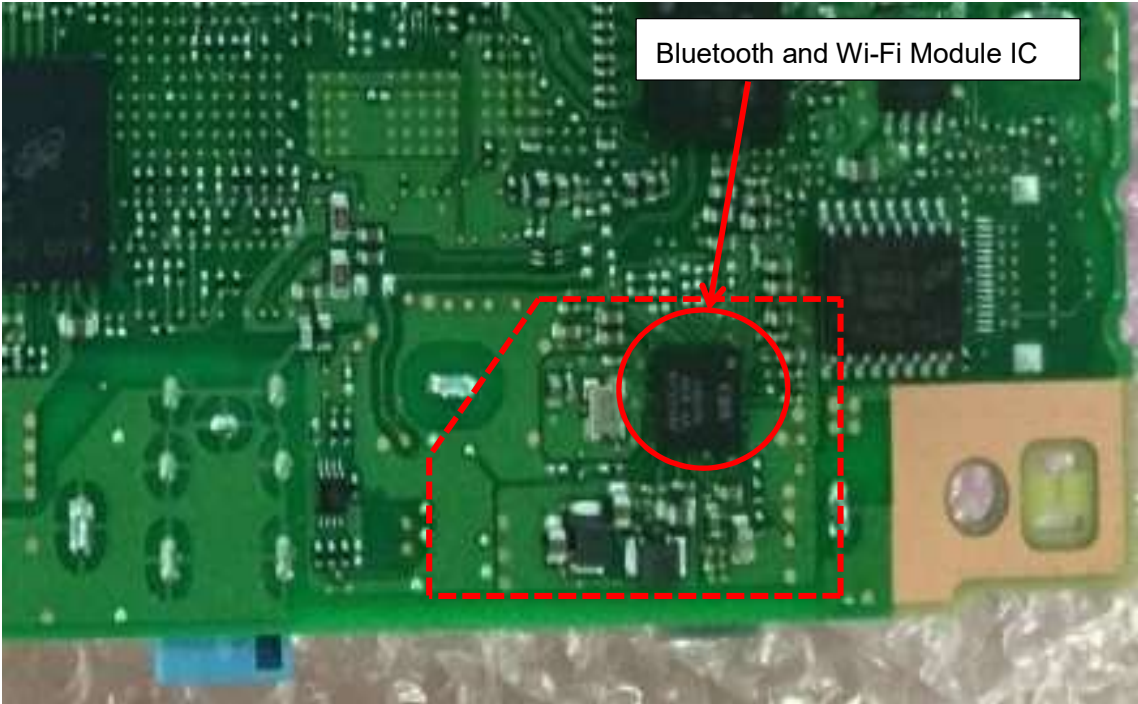


**Solder Side(Cockpit Control Unit)**

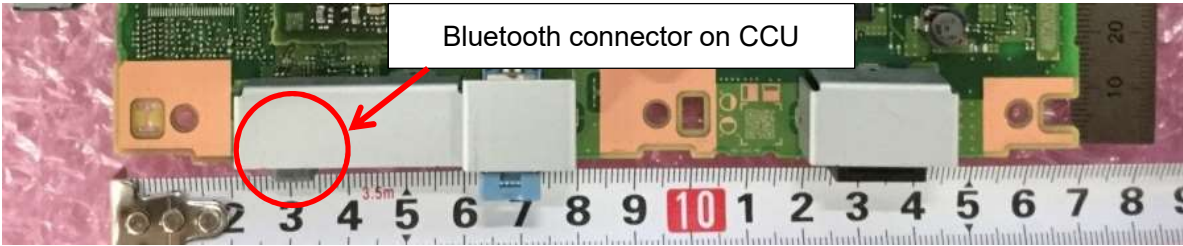
**DENSO CORPORATION**  
**Cockpit Control Unit**  
**Model: DNNS111**

**Internal Photos**

Bluetooth Area is shown with a red frame border.  
(Bluetooth Module IC is shown with a red circle.)



Bluetooth Antenna connector is shown with a red circle.

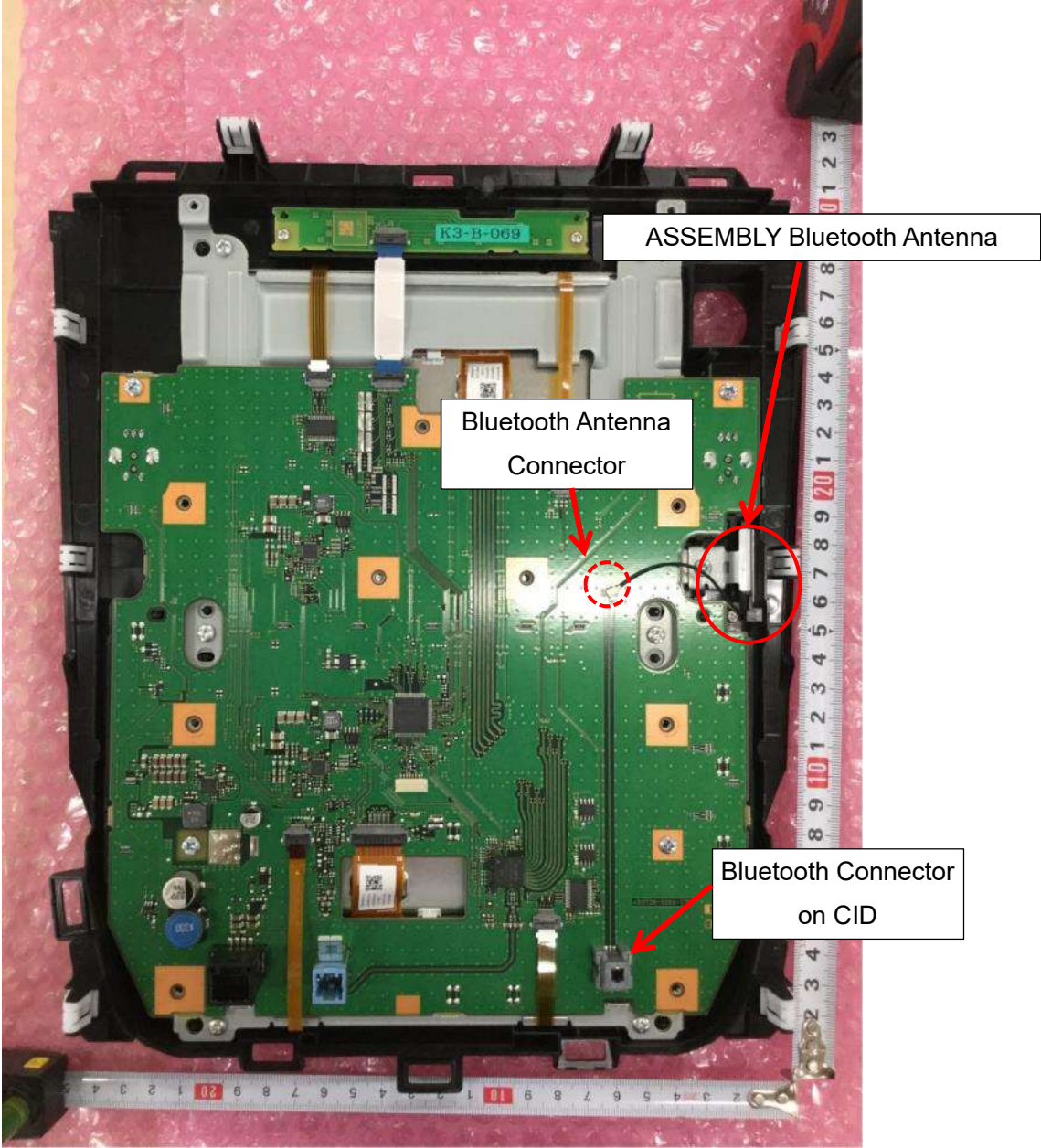




**DENSO CORPORATION**  
**Cockpit Control Unit**  
**Model: DNNS111**

**Internal Photos**

ASSEMBLY Bluetooth Antenna is shown with a red circle.  
(Antenna connectors are shown with red dotted circles.)



**Center Information Display**

**DENSO CORPORATION**  
**Cockpit Control Unit**  
**Model: DNNS111**

**Internal Photos**

ASSEMBLY Bluetooth Antenna (Antenna connector is shown with a red circle.)



**Front**



**Back**

**DENSO CORPORATION**  
**Cockpit Control Unit**  
**Model: DNNS111**

**Internal Photos**

Connection between Bluetooth Area and ASSEMBLY Bluetooth Antenna  
(Antenna connector is shown with a red circle.)

