

## 4.5.2. Appearance of Bluetooth Block

P/N of PCB including Bluetooth IC is '135942-33000910'.

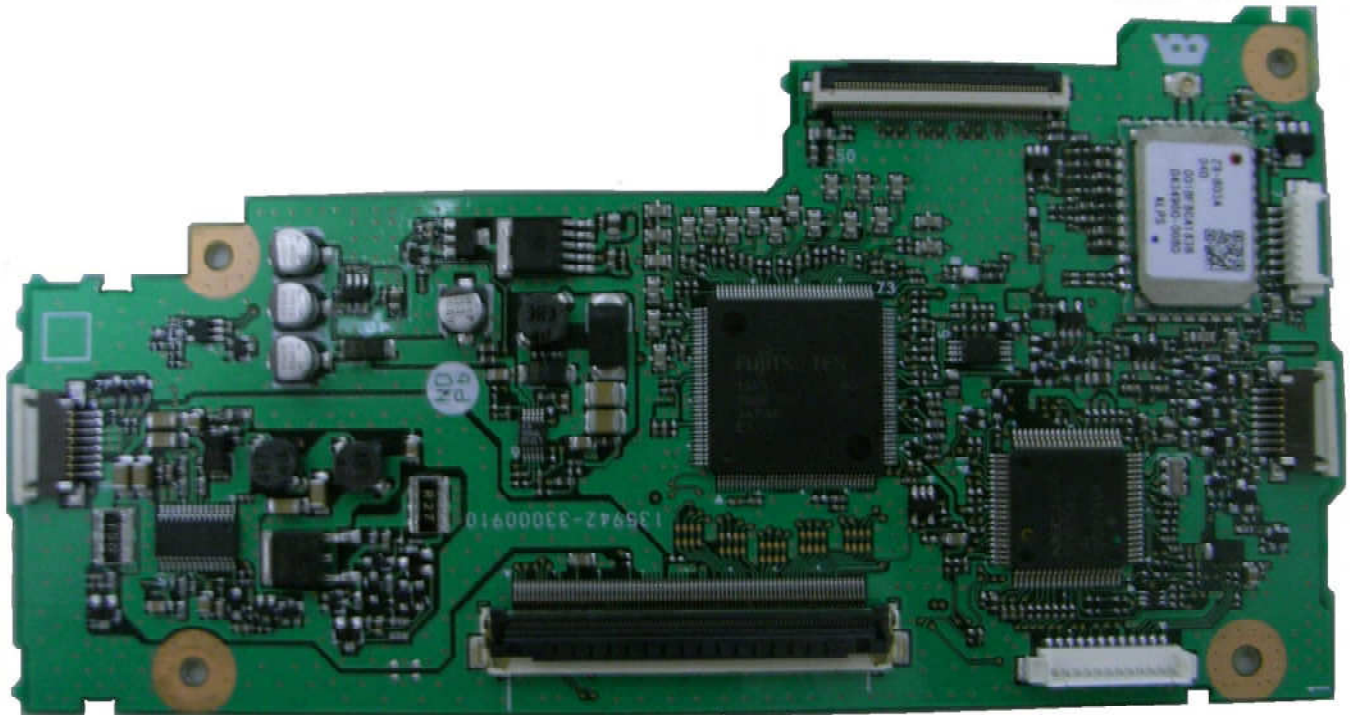


Fig.4.2. Appearance of PCB including Bluetooth IC (Component Side)

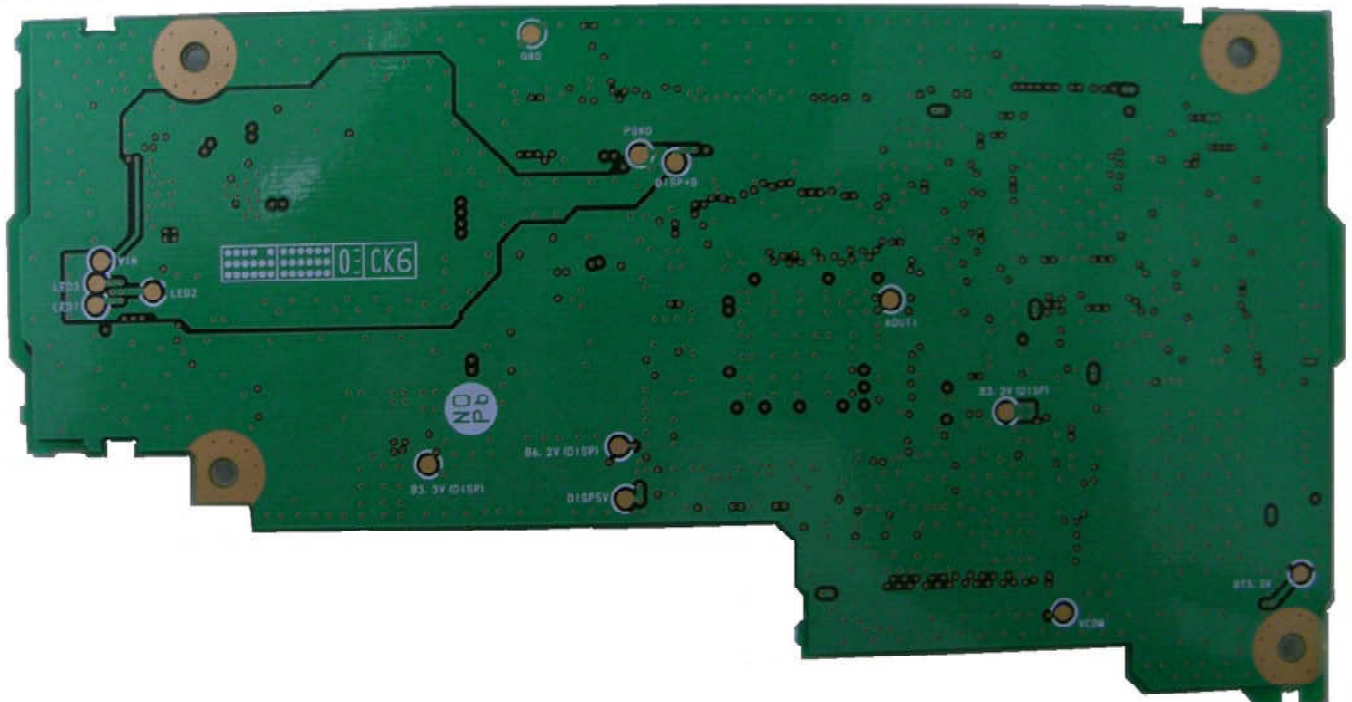


Fig.4.3. Appearance of PCB including Bluetooth IC (Solder Side)

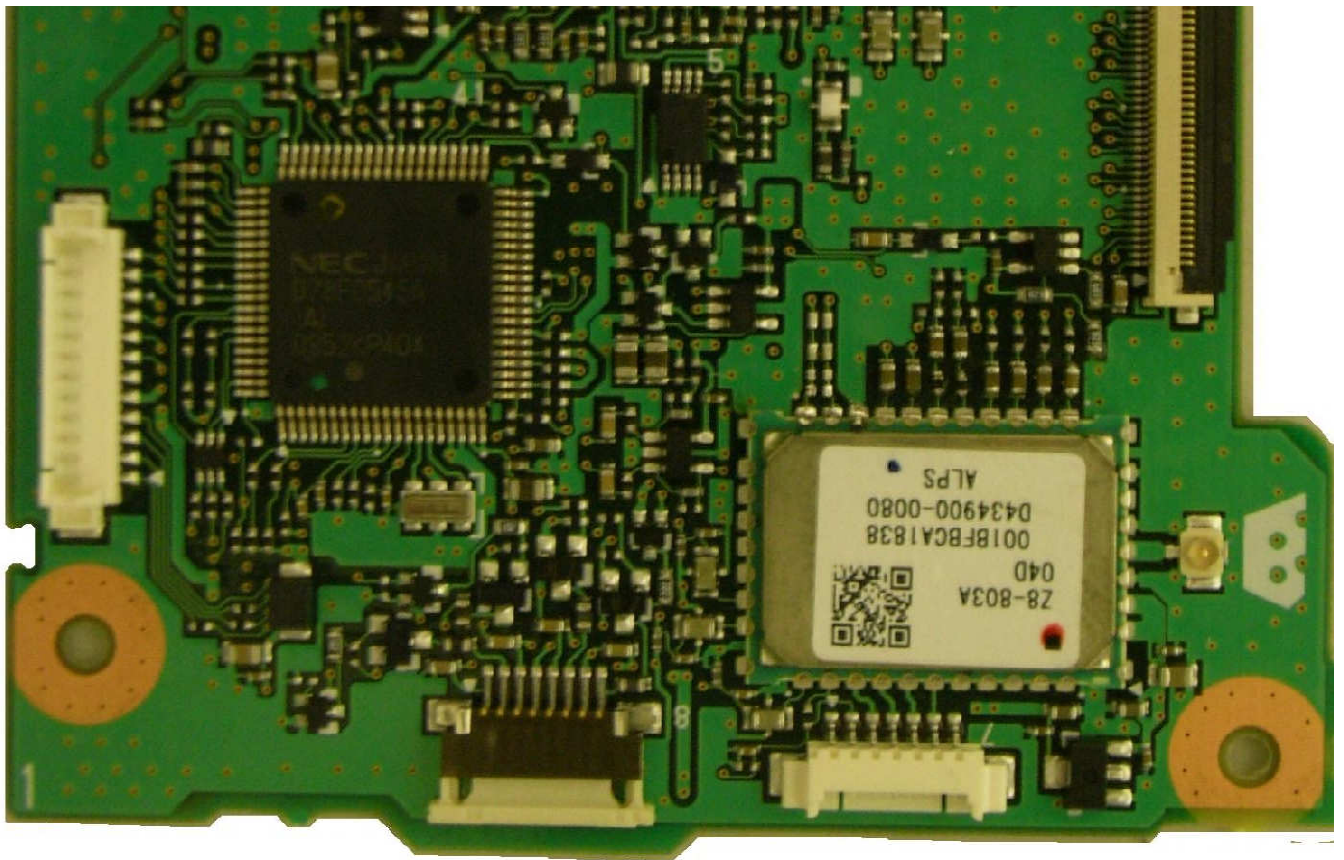


Fig.4.4. Appearance of Bluetooth Block (Component Side)

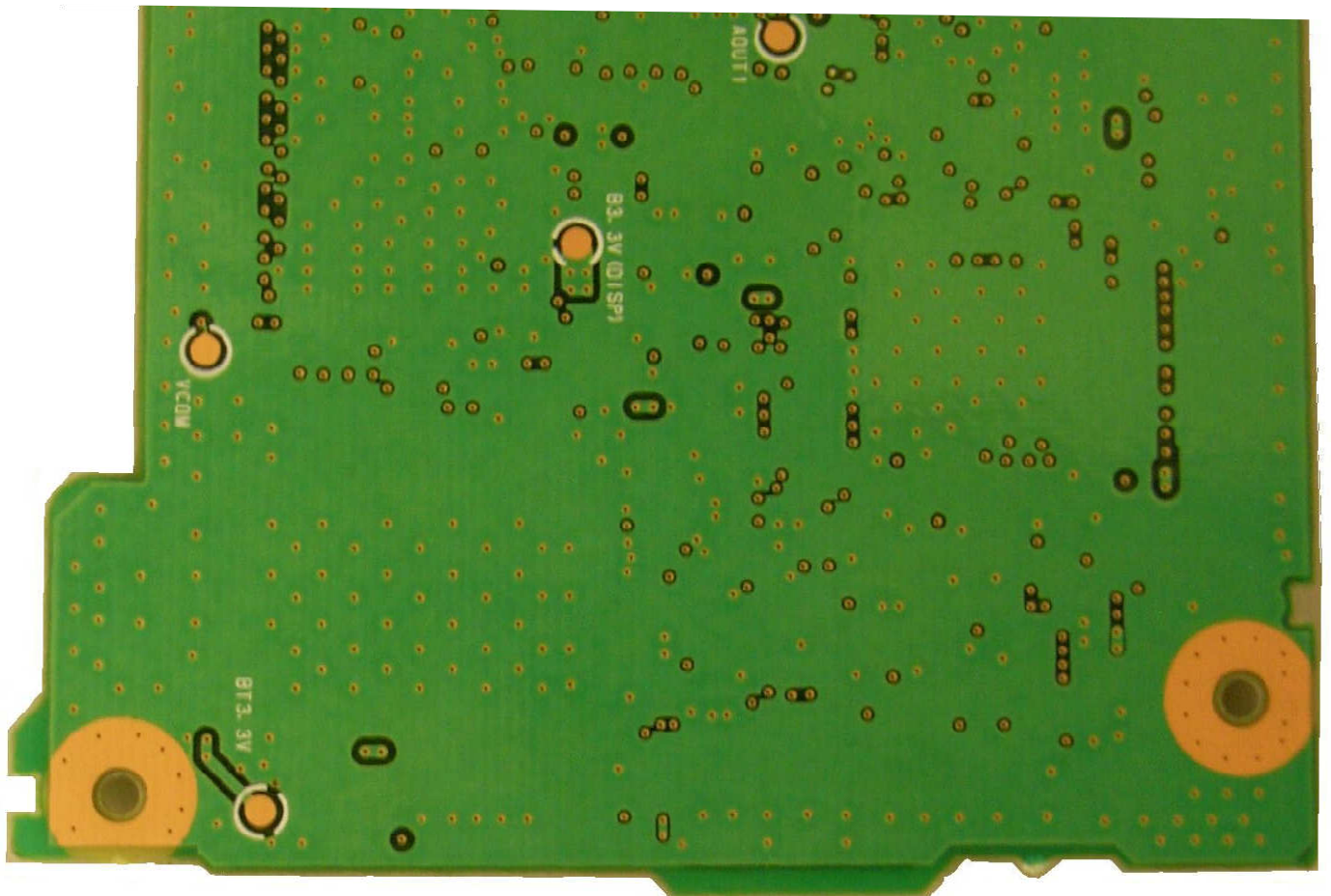
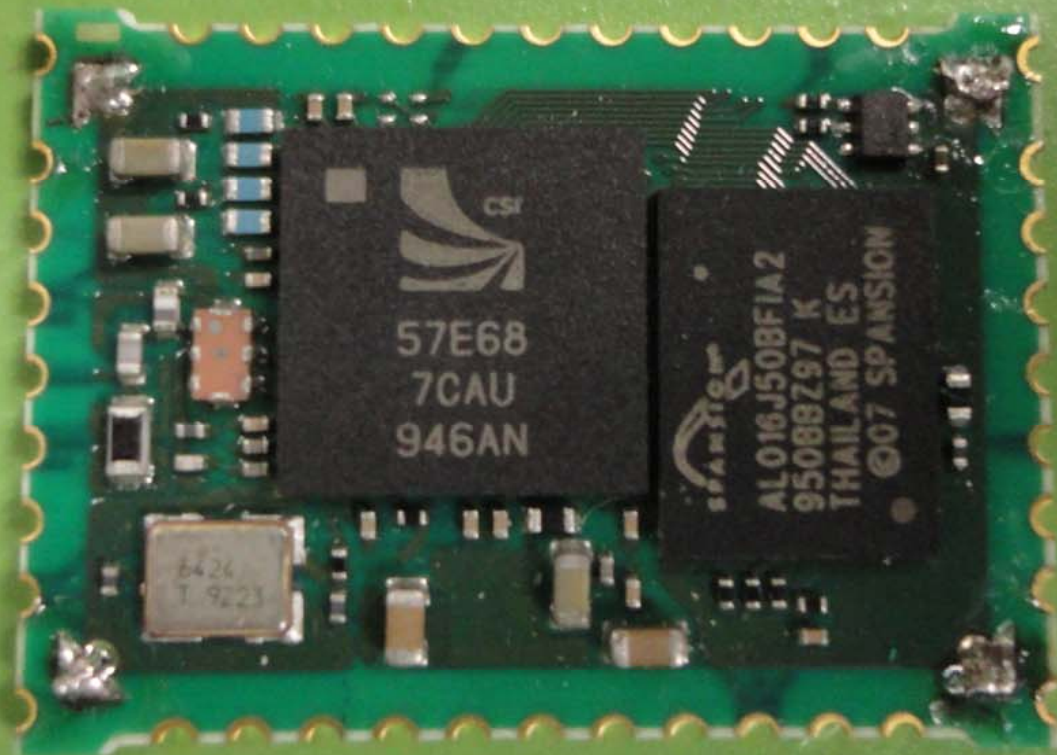


Fig.4.5. Appearance of Bluetooth Block (Solder Side)





Bluetooth IC without shield

## 4.5.3. Location of Bluetooth Antenna

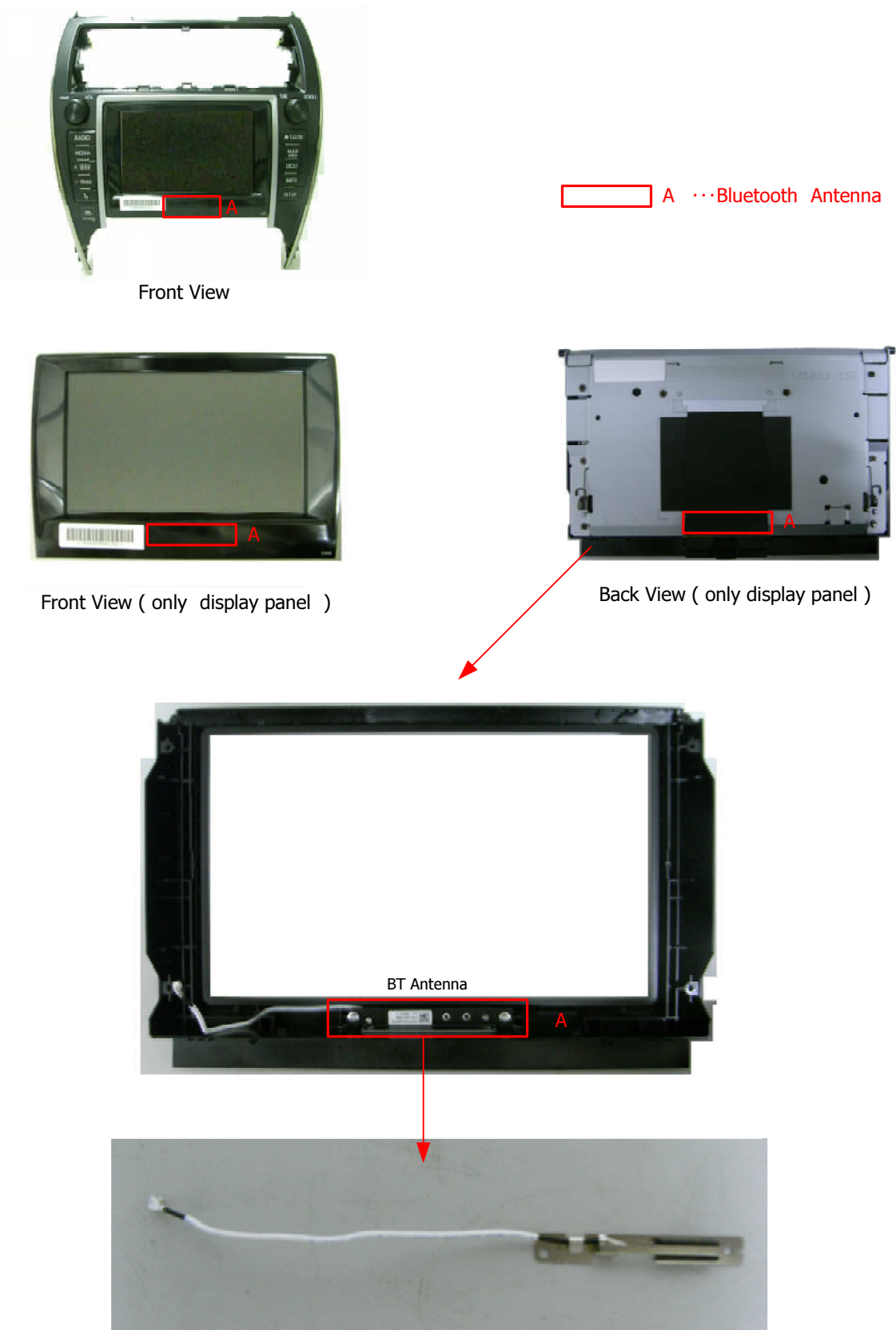


Fig.4.6. Location and Appearance of Bluetooth Antenna