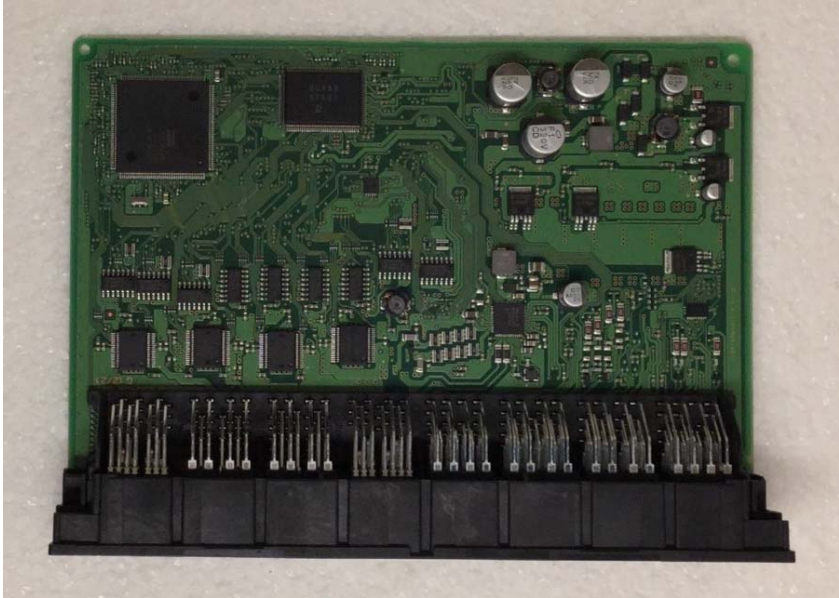
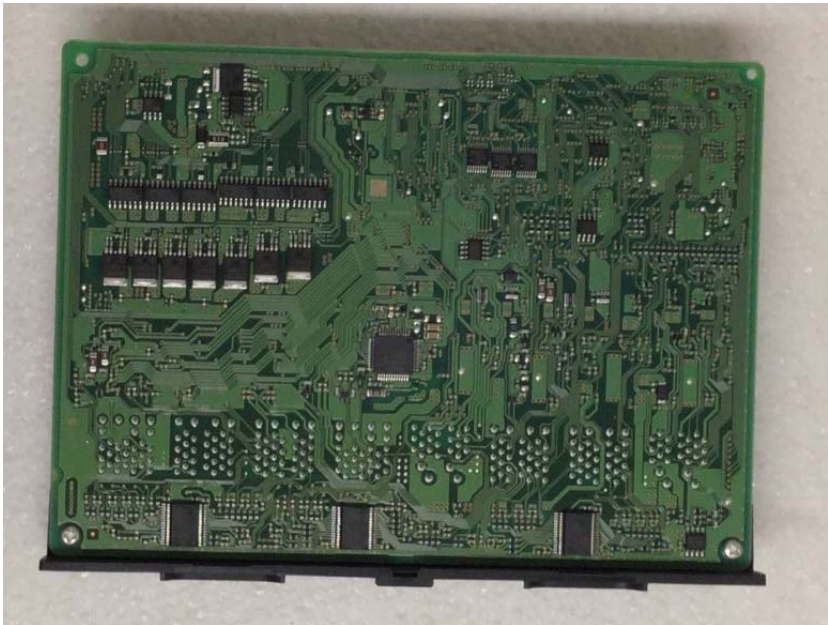


**DENSO CORPORATION**  
**Passive Entry Passive Start System (LF Transmitter and LF Transceiver)**  
**Model: B1NA0**

Internal Photos: BCM



Component side



Solder side

**DENSO CORPORATION**  
**Passive Entry Passive Start System (LF Transmitter and LF Transceiver)**  
**Model: B1NA0**

Internal Photos: Rocker Driver Antenna, Rocker Passenger Antenna, Trunk Antenna, Bracket Antenna



Note :

Following antennas have equivalent electrical characteristics:

- Rocker Driver Antenna
- Rocker Passenger Antenna
- Trunk Antenna
- Bracket Antenna.

**DENSO CORPORATION**  
**Passive Entry Passive Start System (LF Transmitter and LF Transceiver)**  
**Model: B1NA0**

Internal Photos: Rear(Front) Bumper/Frunk Antenna



Note :

Following antennas have equivalent electrical characteristics:

- Rear(Front) Bumper/Frunk Antenna
- Interior Antenna

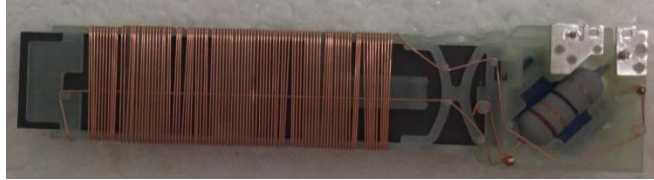
**DENSO CORPORATION**  
**Passive Entry Passive Start System (LF Transmitter and LF Transceiver)**  
**Model: B1NA0**

Internal Photos: Immo Combo Antenna



**DENSO CORPORATION**  
**Passive Entry Passive Start System (LF Transmitter and LF Transceiver)**  
**Model: B1NA0**

Internal Photos: Interior Antenna



Note:

Following antennas have equivalent electrical characteristics:

- Rear(Front) Bumper/Frunk Antenna
- Interior Antenna