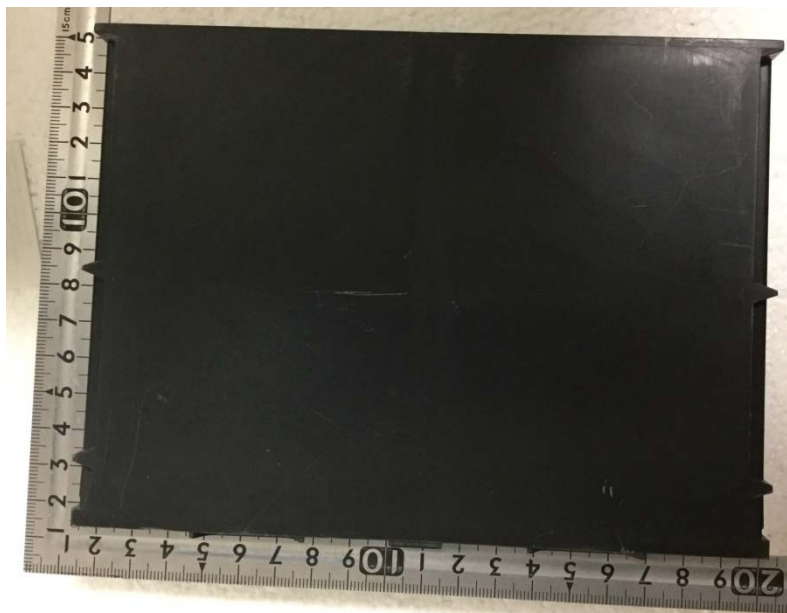


DENSO CORPORATION
Passive Entry Passive Start System (LF Transmitter and LF Transceiver)
Model: B1NA0

External Photos: BCM (1/2)



Front



Rear

Note:

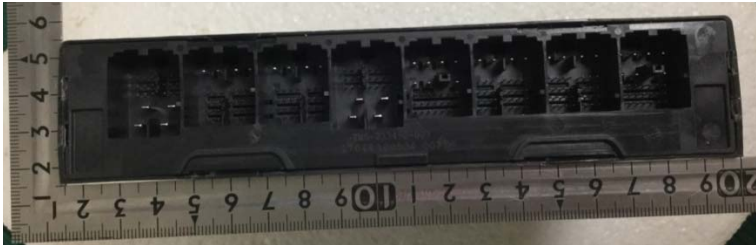
Marking layout, size and other indications may be changed.

Marking is embossed, labeled, or printed with laser marking.

Other indication may be added.

DENSO CORPORATION
Passive Entry Passive Start System (LF Transmitter and LF Transceiver)
Model: B1NA0

External Photos: BCM (2/2)



Top



Bottom



Right



Left

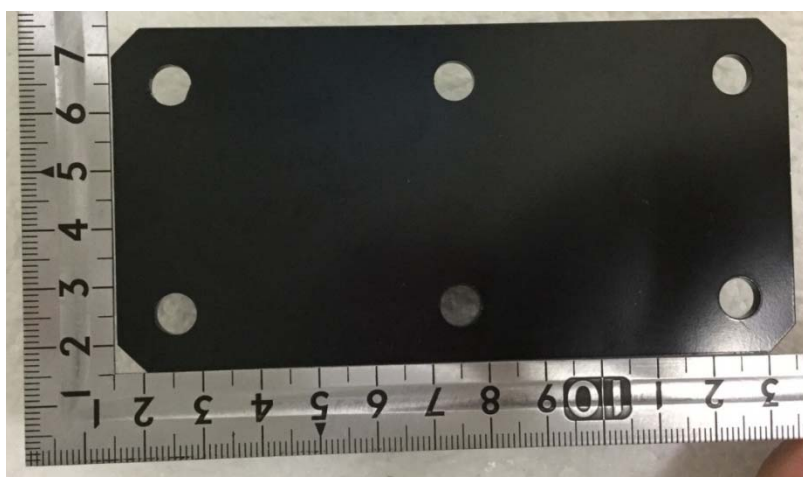
Note :
The outer appearance may be changed.

DENSO CORPORATION
Passive Entry Passive Start System (LF Transmitter and LF Transceiver)
Model: B1NA0

External Photos: Rocker Driver Antenna (1/2)



Front



Rear

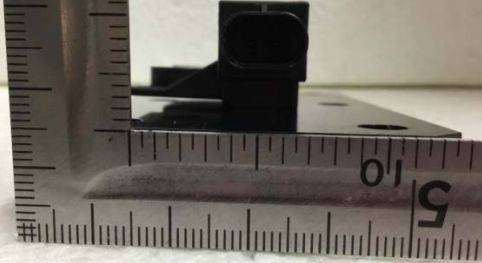
Note :

Following antennas have equivalent electrical characteristics:

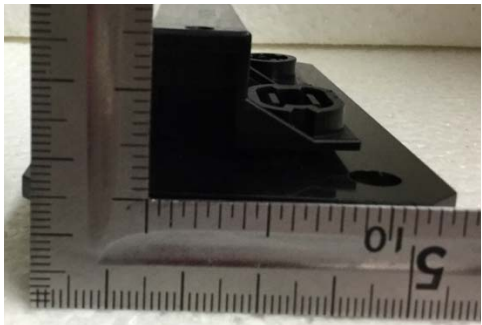
- Rocker Driver Antenna
- Rocker Passenger Antenna
- Trunk Antenna
- Bracket Antenna

DENSO CORPORATION
Passive Entry Passive Start System (LF Transmitter and LF Transceiver)
Model: B1NA0

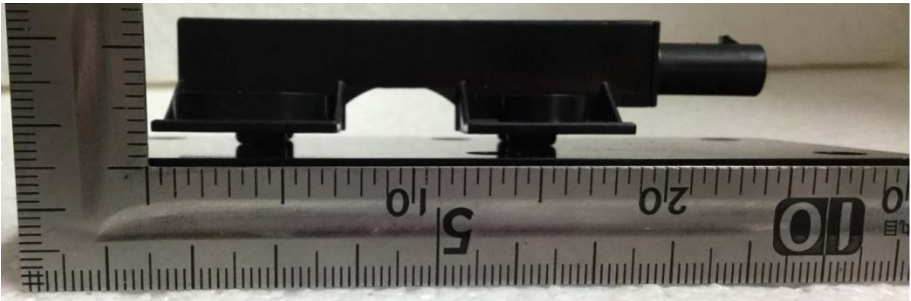
External Photos: Rocker Driver Antenna (2/2)



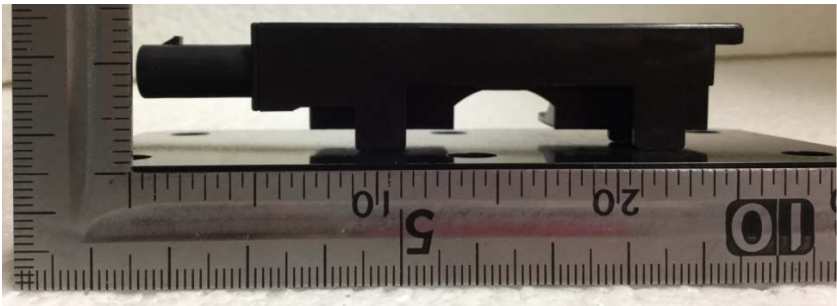
Top



Bottom



Right



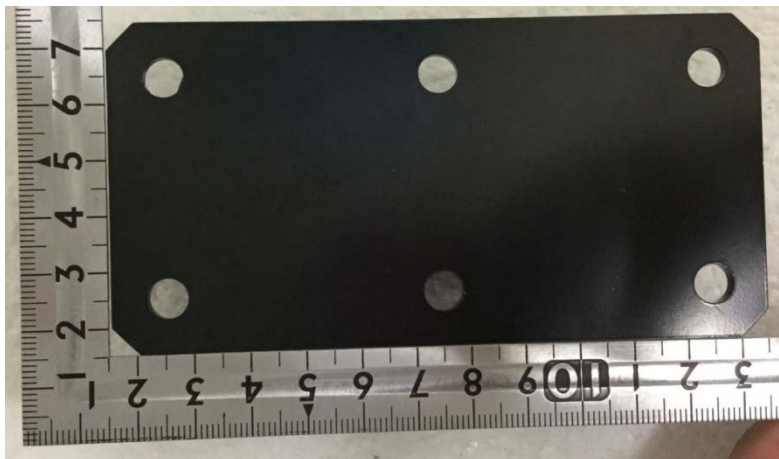
Left

DENSO CORPORATION
Passive Entry Passive Start System (LF Transmitter and LF Transceiver)
Model: B1NA0

External Photos: Rocker Passenger Antenna (1/2)



Front



Rear

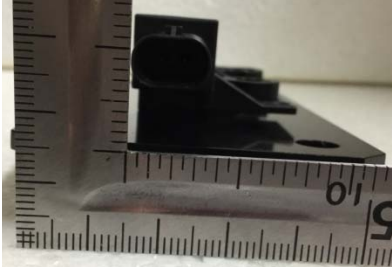
Note :

Following antennas have equivalent electrical characteristics:

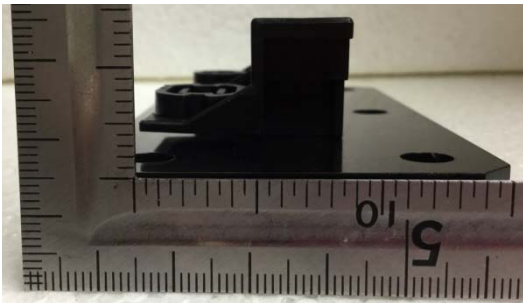
- Rocker Driver Antenna
- Rocker Passenger Antenna
- Trunk Antenna
- Bracket Antenna

DENSO CORPORATION
Passive Entry Passive Start System (LF Transmitter and LF Transceiver)
Model: B1NA0

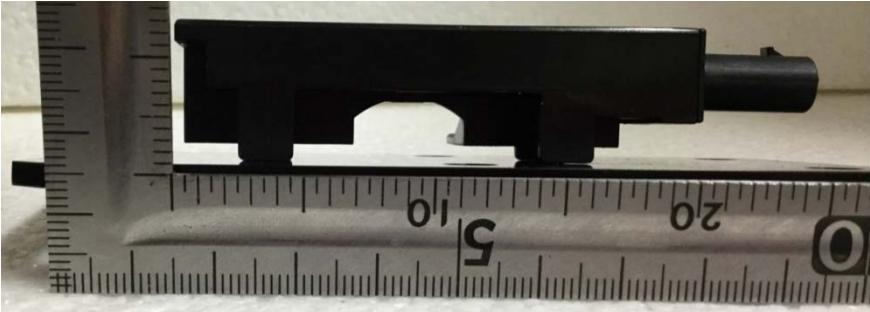
External Photos: Rocker Passenger Antenna (2/2)



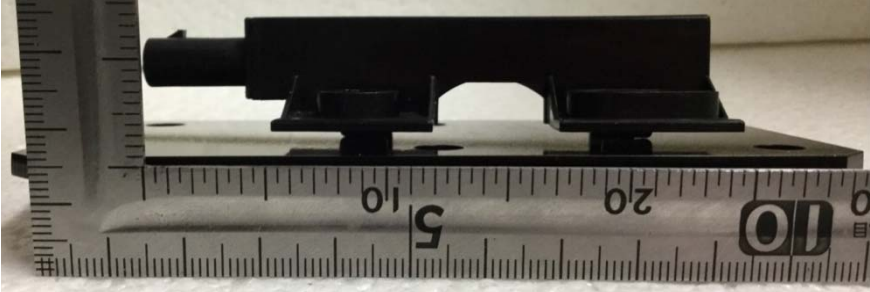
Top



Bottom



Right



Left

DENSO CORPORATION
Passive Entry Passive Start System (LF Transmitter and LF Transceiver)
Model: B1NA0

External Photos: Rear(Front) Bumper/Frunk Antenna (1/2)



Front



Rear

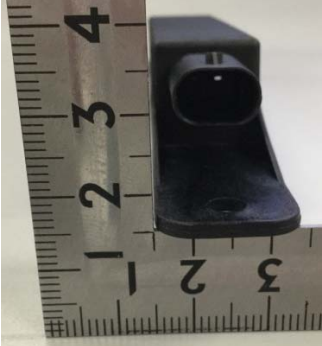
Note :

Following antennas have equivalent electrical characteristics:

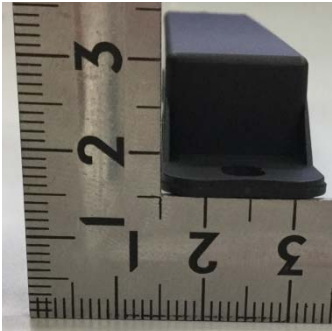
- Rear(Front) Bumper/Frunk Antenna
- Interior Antenna

DENSO CORPORATION
Passive Entry Passive Start System (LF Transmitter and LF Transceiver)
Model: B1NA0

External Photos: Rear(Front) Bumper/Frunk Antenna (2/2)



Top



Bottom



Right



Left

DENSO CORPORATION
Passive Entry Passive Start System (LF Transmitter and LF Transceiver)
Model: B1NA0

External Photos: Immo Combo Antenna (1/2)



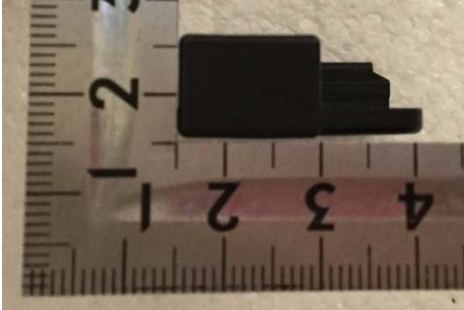
Front



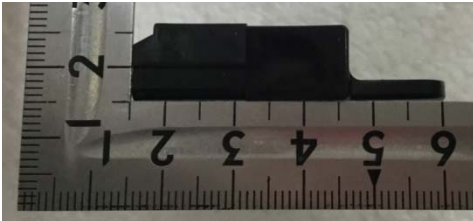
Rear

DENSO CORPORATION
Passive Entry Passive Start System (LF Transmitter and LF Transceiver)
Model: B1NA0

External Photos: Immo Combo Antenna (2/2)



Top



Bottom



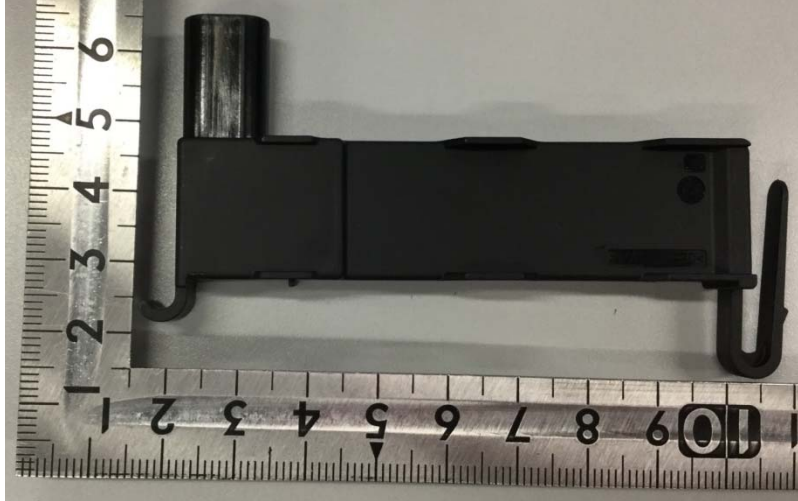
Right



Left

DENSO CORPORATION
Passive Entry Passive Start System (LF Transmitter and LF Transceiver)
Model: B1NA0

External Photos: Interior Antenna (1/2)



Front



Rear

Note :

Following antennas have equivalent electrical characteristics:

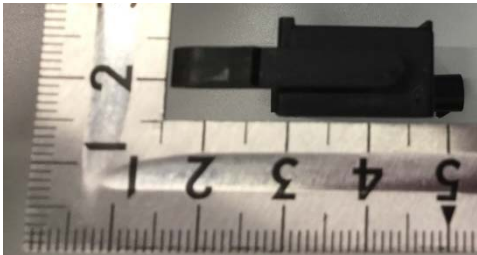
- Rear(Front) Bumper/Frunk Antenna
- Interior Antenna

DENSO CORPORATION
Passive Entry Passive Start System (LF Transmitter and LF Transceiver)
Model: B1NA0

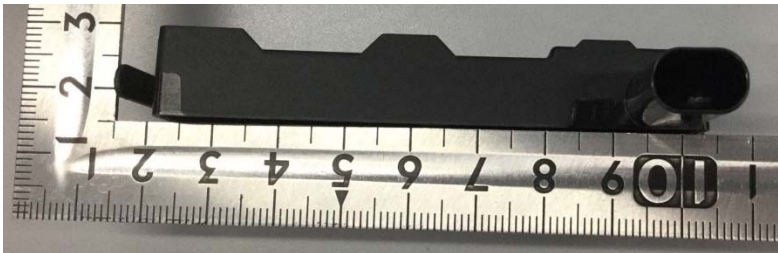
External Photos: Interior Antenna (2/2)



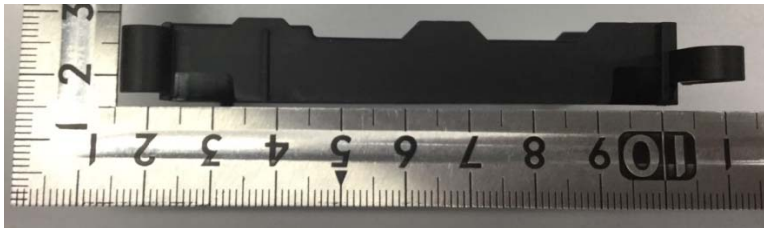
Top



Bottom



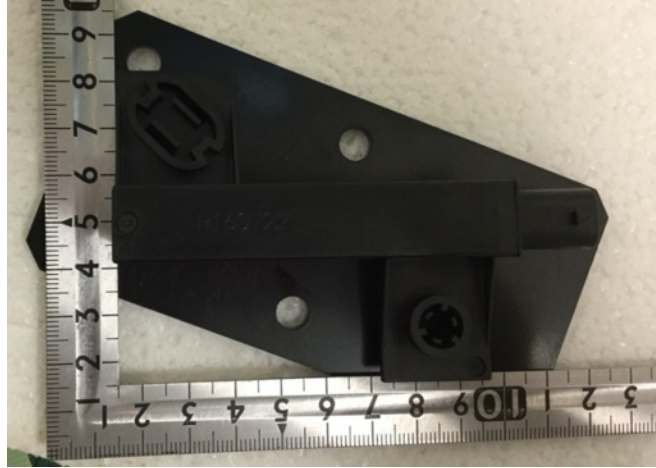
Right



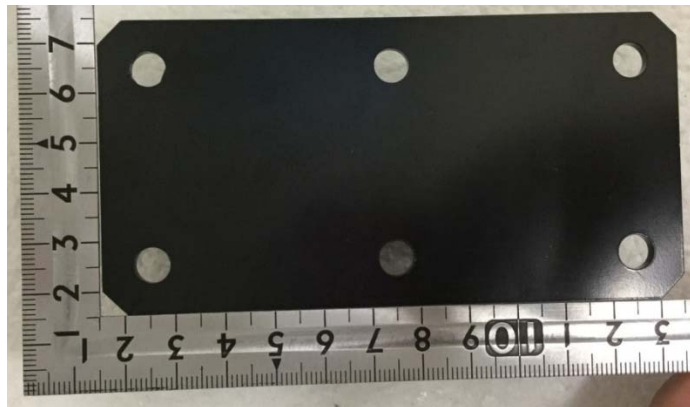
Left

DENSO CORPORATION
Passive Entry Passive Start System (LF Transmitter and LF Transceiver)
Model: B1NA0

External Photos: Trunk Antenna (1/2)



Front



Rear

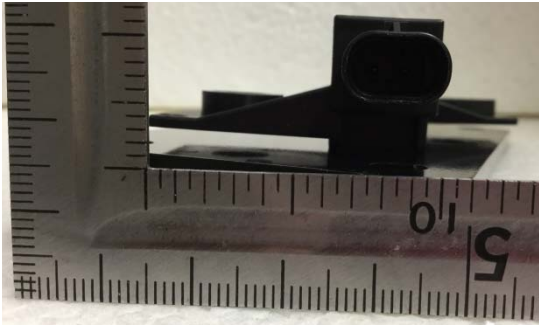
Note :

Following antennas have equivalent electrical characteristics:

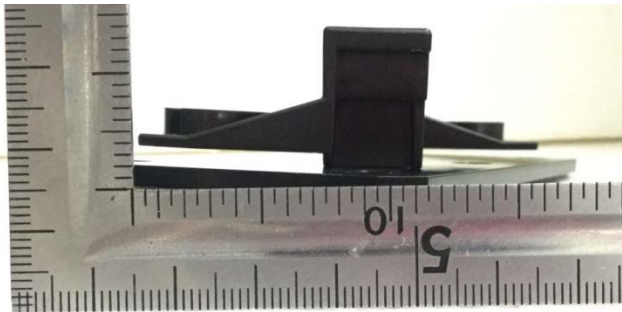
- Rocker Driver Antenna
- Rocker Passenger Antenna
- Trunk Antenna
- Bracket Antenna

DENSO CORPORATION
Passive Entry Passive Start System (LF Transmitter and LF Transceiver)
Model: B1NA0

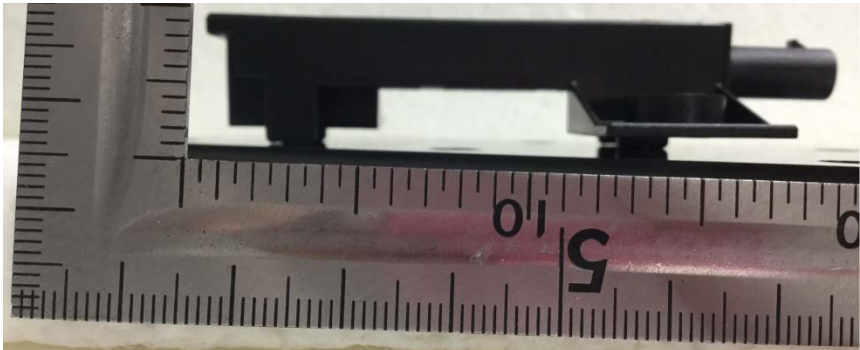
External Photos: Trunk Antenna (2/2)



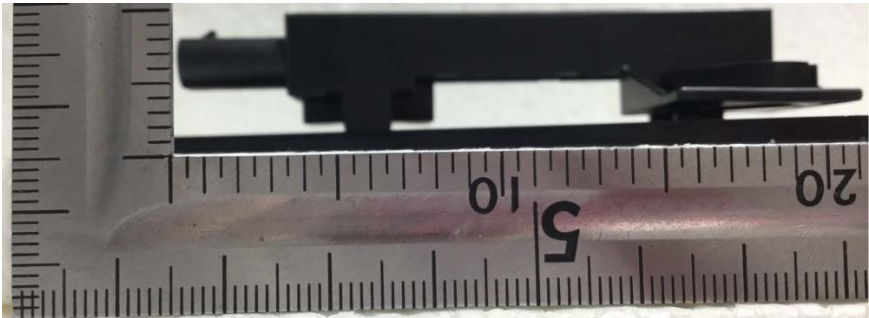
Top



Bottom



Right



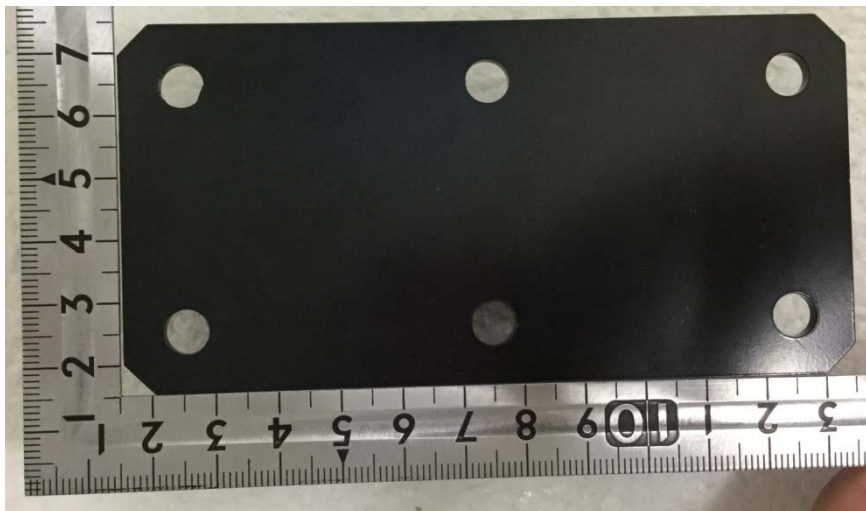
Left

DENSO CORPORATION
Passive Entry Passive Start System (LF Transmitter and LF Transceiver)
Model: B1NA0

External Photos: Bracket Antenna (1/2)



Front



Rear

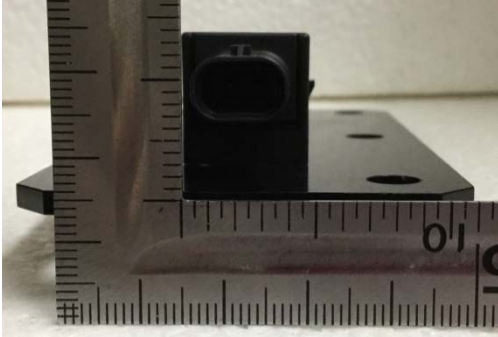
Note :

Following antennas have equivalent electrical characteristics:

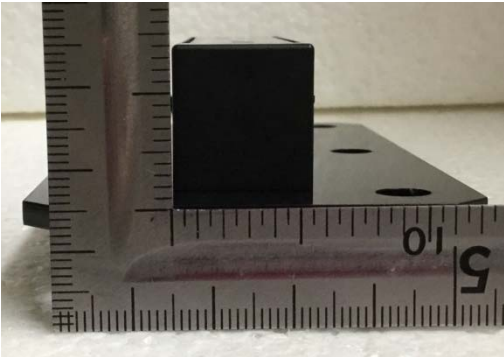
- Rocker Driver Antenna
- Rocker Passenger Antenna
- Trunk Antenna
- Bracket Antenna

DENSO CORPORATION
Passive Entry Passive Start System (LF Transmitter and LF Transceiver)
Model: B1NA0

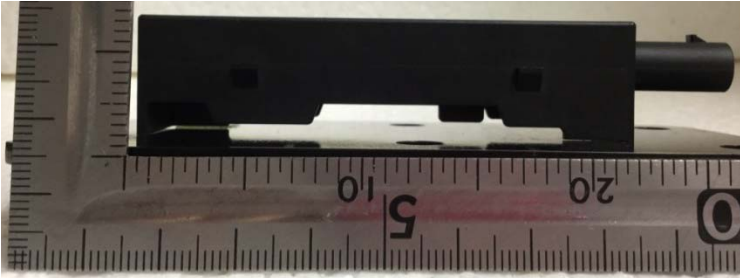
External Photos: Bracket Antenna (2/2)



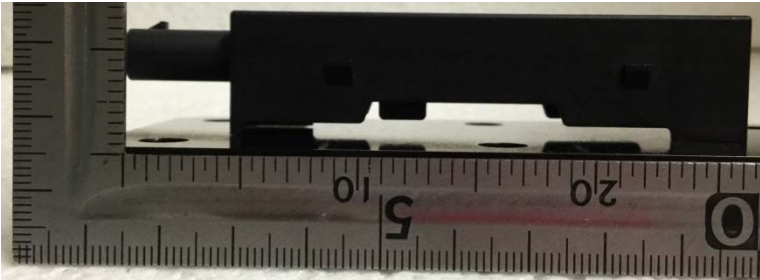
Top



Bottom



Right



Left