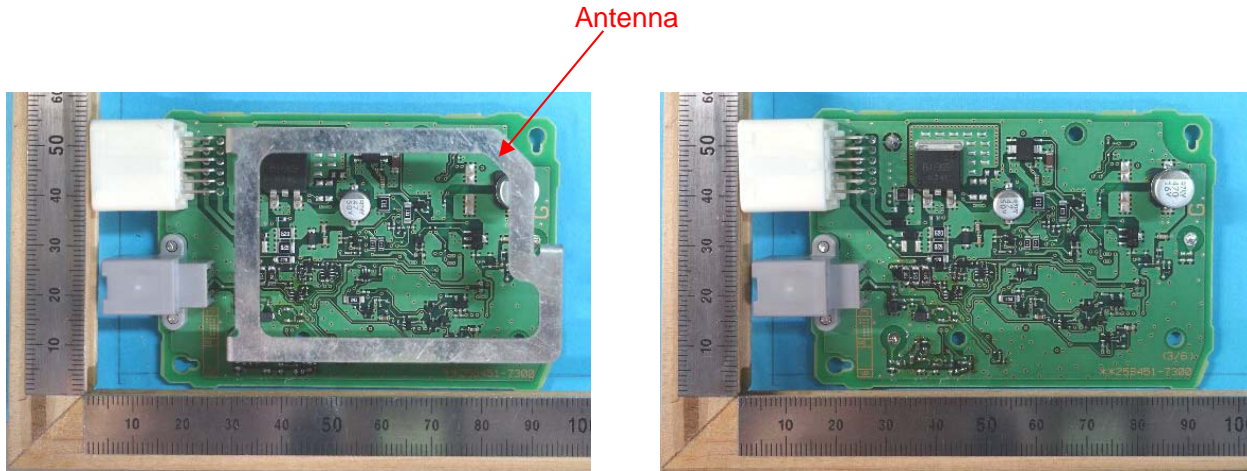


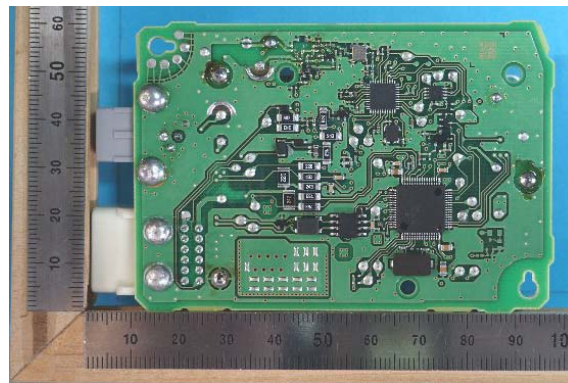
DENSO CORPORATION
Remote Keyless Entry System and TPMS (Receiver)
FCC ID: HYQ23ABL

Internal Photos: Variation No.2



Component side with antenna

Component side without antenna

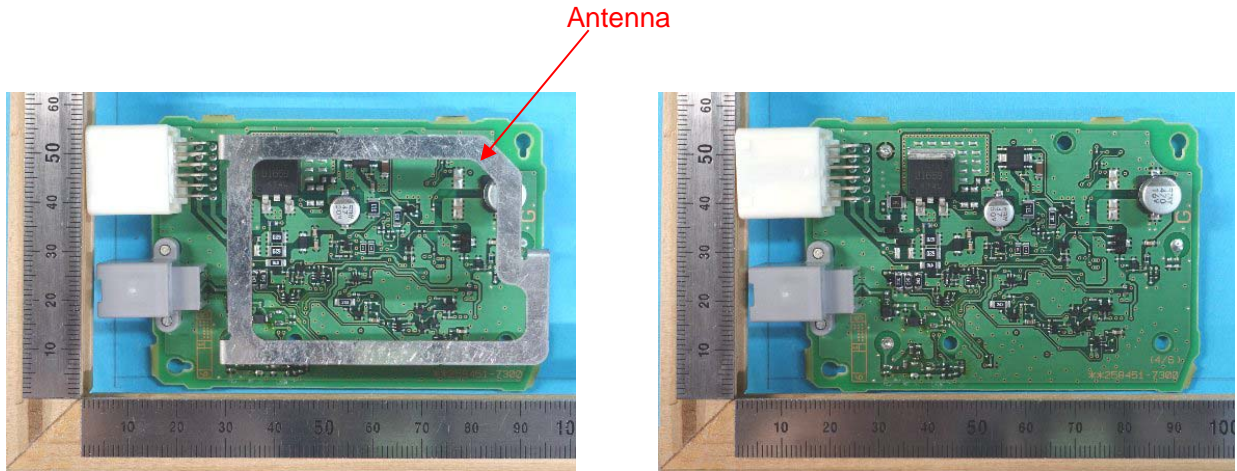


Solder side

Inverse F antenna : TYPE 1
External antenna : TYPE 2
Antenna switching : TYPE 1

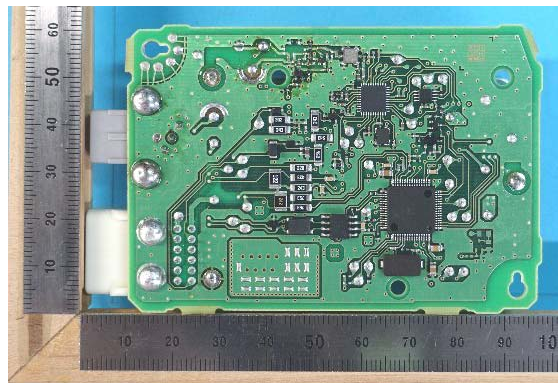
DENSO CORPORATION
Remote Keyless Entry System and TPMS (Receiver)
FCC ID: HYQ23ABL

Internal Photos: Variation No.3



Component side with antenna

Component side without antenna



Solder side

- Inverse F antenna : TYPE 1
- External antenna : TYPE 2
- Antenna switching : TYPE 2

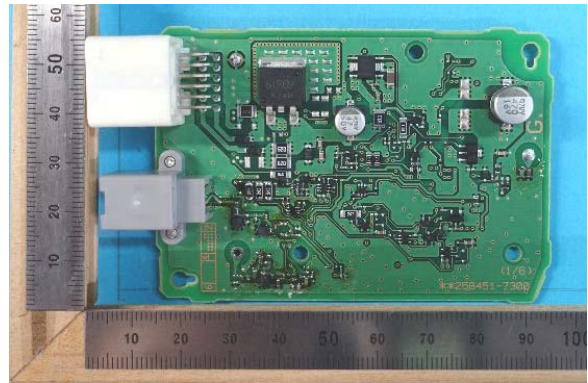
DENSO CORPORATION
Remote Keyless Entry System and TPMS (Receiver)
FCC ID: HYQ23ABL

Internal Photos: Variation No.5

Antenna



Component side with antenna



Component side without antenna



Solder side

Inverse F antenna : TYPE 2
External antenna : TYPE 2
Antenna switching : TYPE 1

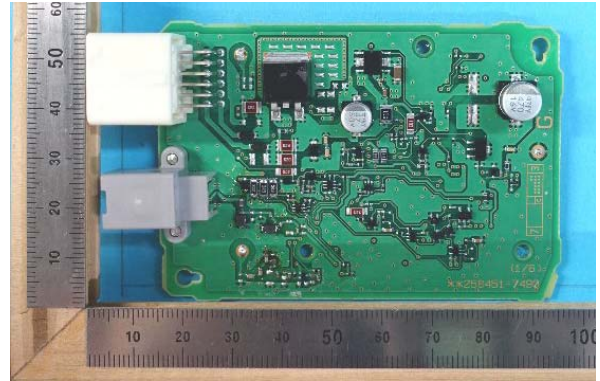
DENSO CORPORATION
Remote Keyless Entry System and TPMS (Receiver)
FCC ID: HYQ23ABL

Internal Photos: Variation No.8

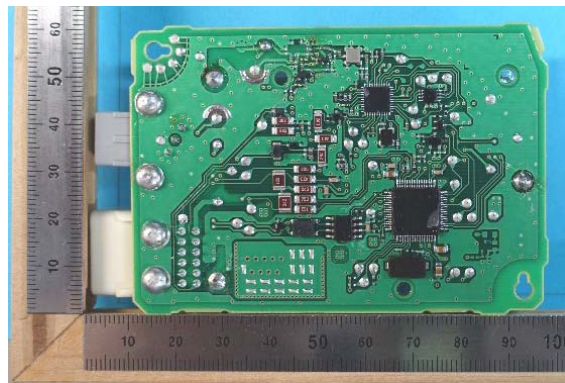
Antenna



Component side with antenna



Component side without antenna



Solder side

- Inverse F antenna : TYPE 3
- External antenna : TYPE 2
- Antenna switching : TYPE 1

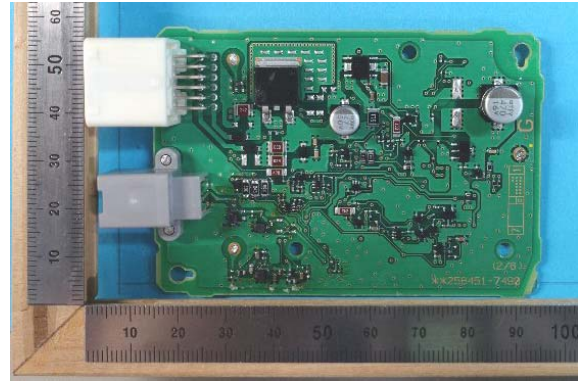
DENSO CORPORATION
Remote Keyless Entry System and TPMS (Receiver)
FCC ID: HYQ23ABL

Internal Photos: Variation No.11

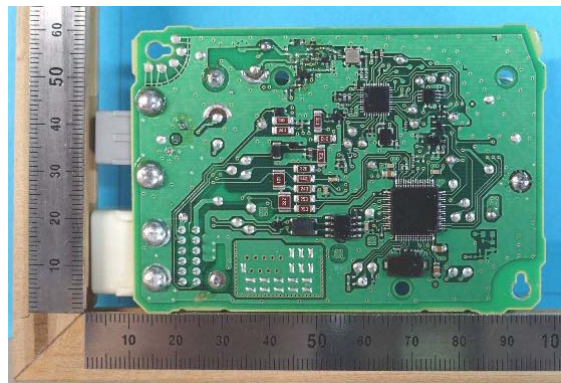
Antenna



Component side with antenna



Component side without antenna



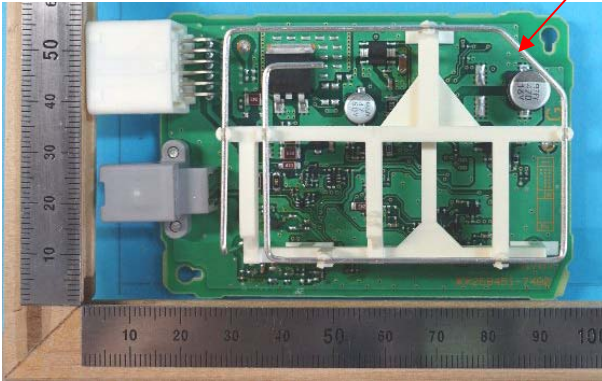
Solder side

Inverse F antenna : TYPE 4
External antenna : TYPE 2
Antenna switching : TYPE 1

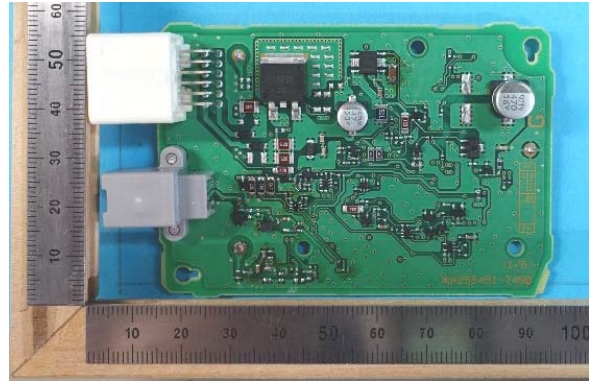
DENSO CORPORATION
Remote Keyless Entry System and TPMS (Receiver)
FCC ID: HYQ23ABL

Internal Photos: Variation No.14

Antenna



Component side with antenna



Component side without antenna



Solder side

Inverse L antenna : TYPE 1
External antenna : TYPE 2
Antenna switching : TYPE 1