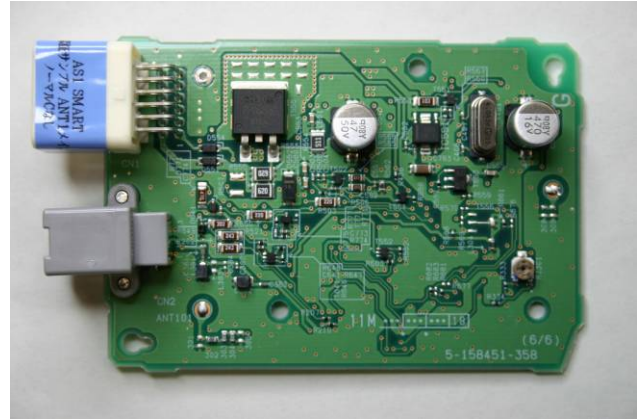
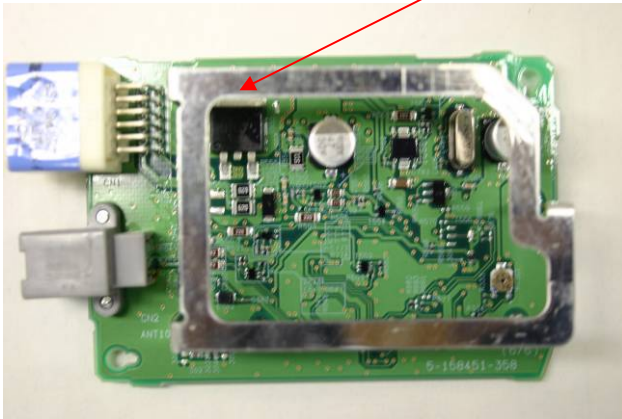


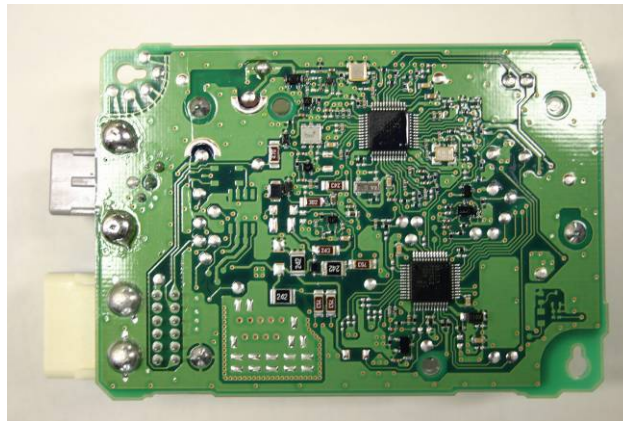
DENSO CORPORATION
Remote Keyless Entry System and TPMS (Receiver)
FCC ID: HYQ23AAE

Internal Photos (Variation No.3)

Antenna



Component Side



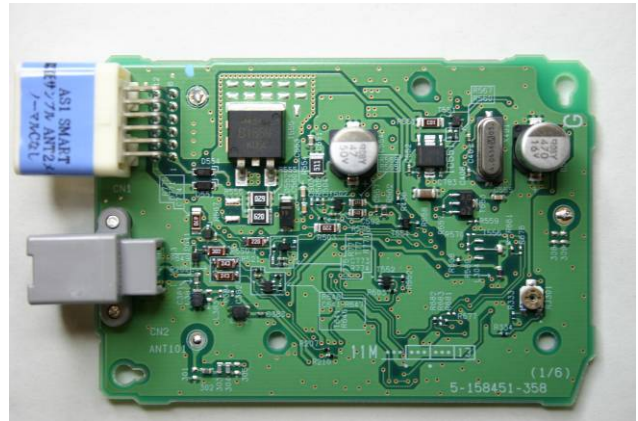
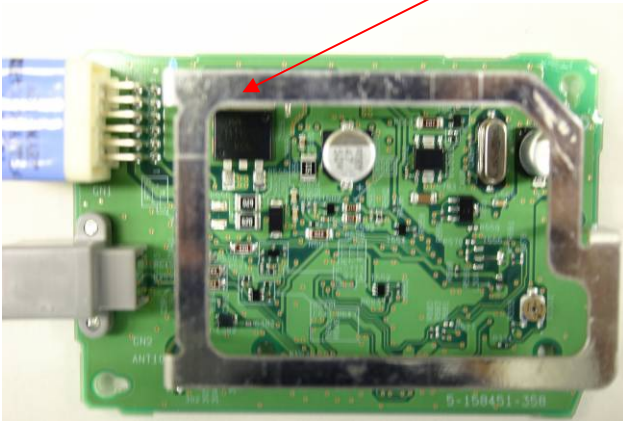
Solder Side

- Inverse F Antenna: TYPE 1
- External Antenna: TYPE 2
- AUTOMATIC LOCATION: TYPE 1
- ANTENNA SWITCHING: TYPE 1

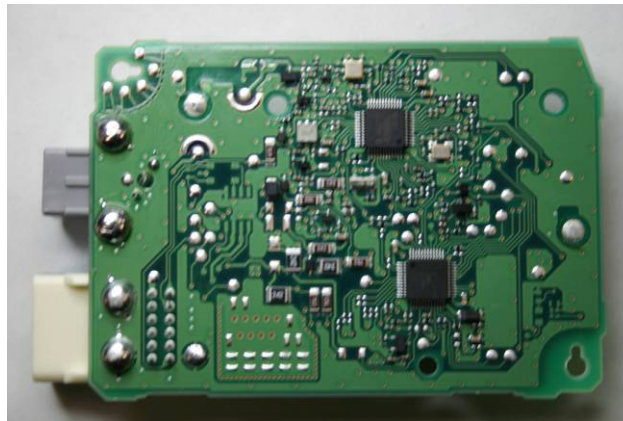
DENSO CORPORATION
Remote Keyless Entry System and TPMS (Receiver)
FCC ID: HYQ23AAE

Internal Photos (Variation No.5)

Antenna



Component Side

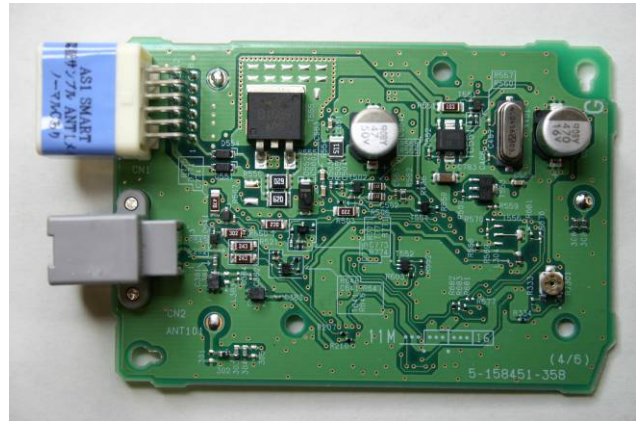
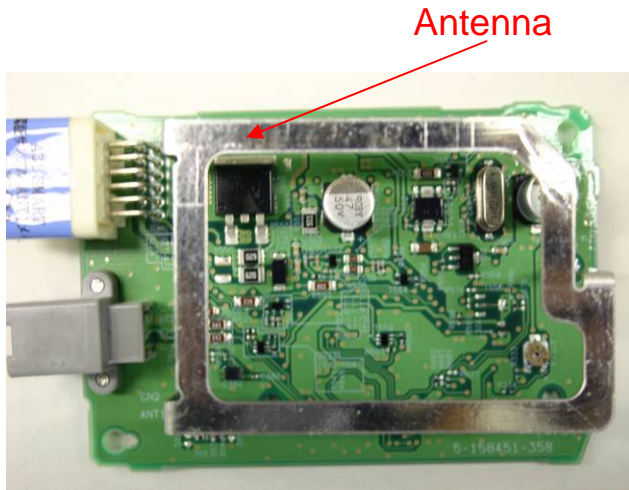


Solder Side

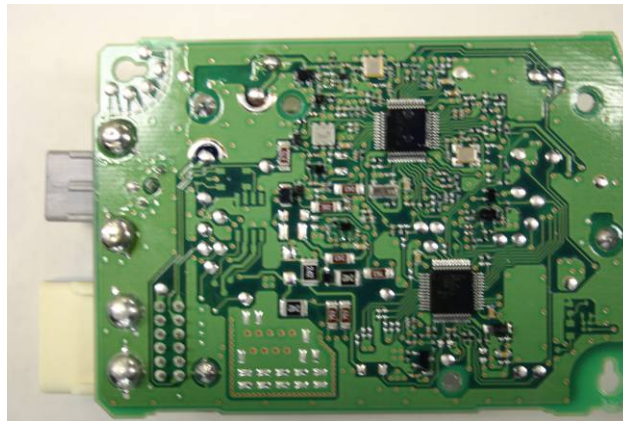
- Inverse F Antenna: TYPE 1
- External Antenna: TYPE 2
- AUTOMATIC LOCATION: TYPE 1
- ANTENNA SWITCHING: TYPE 2

DENSO CORPORATION
Remote Keyless Entry System and TPMS (Receiver)
FCC ID: HYQ23AAE

Internal Photos (Variation No.9)



Component Side



Solder Side

Inverse F Antenna: TYPE 2

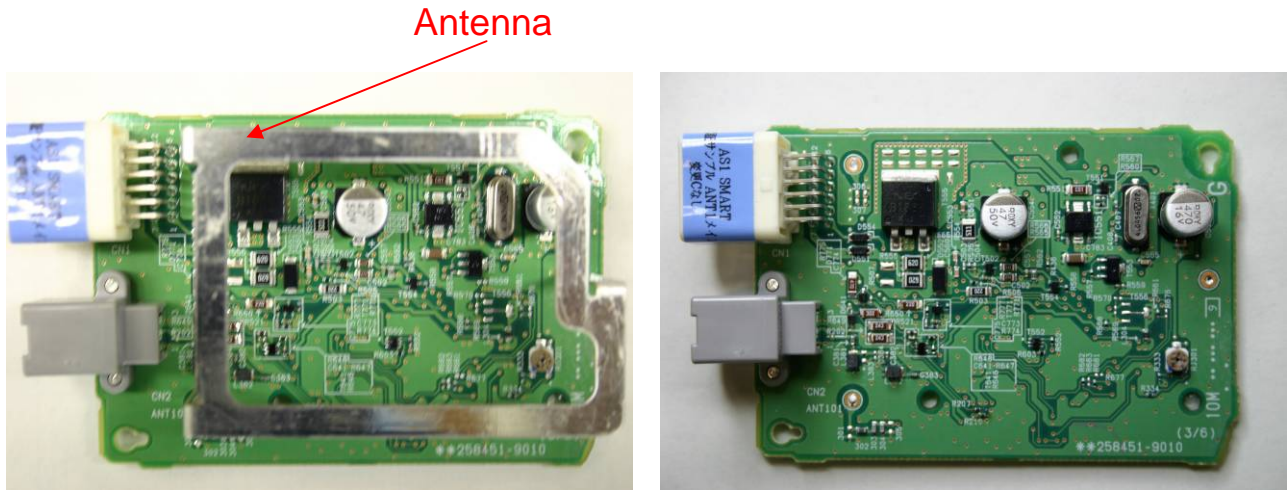
External Antenna: TYPE 2

AUTOMATIC LOCATION: TYPE 1

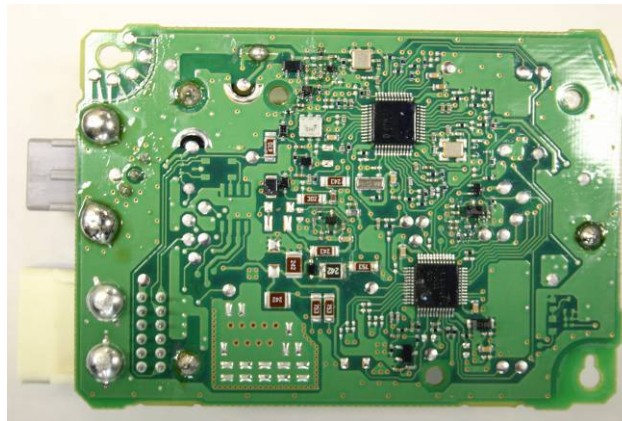
ANTENNA SWITCHING: TYPE 1

DENSO CORPORATION
Remote Keyless Entry System and TPMS (Receiver)
FCC ID: HYQ23AAE

Internal Photos (Variation No.15)



Component Side

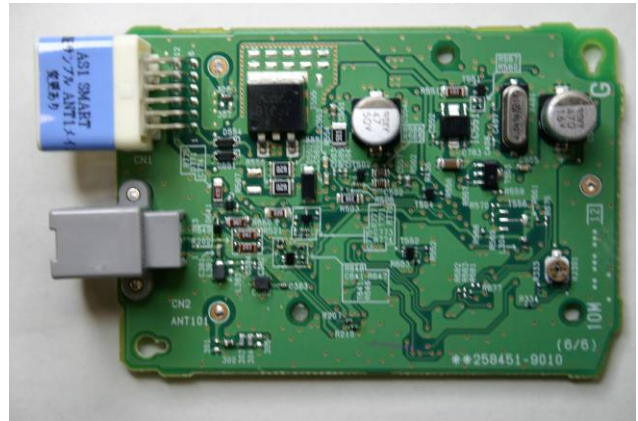
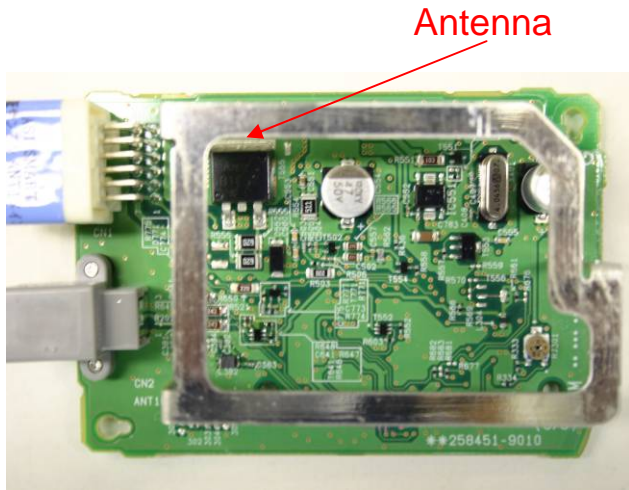


Solder Side

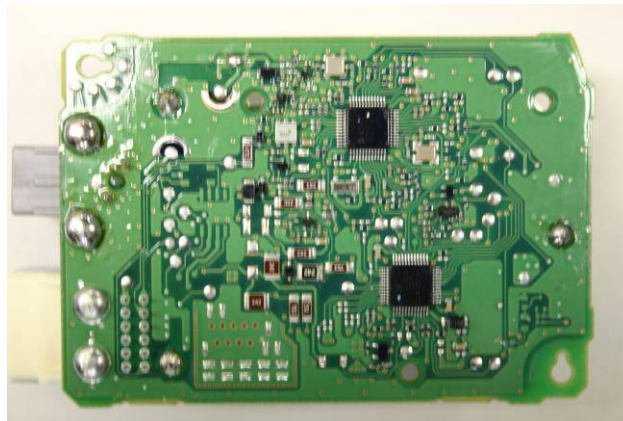
- Inverse F Antenna: TYPE 3
- External Antenna: TYPE 2
- AUTOMATIC LOCATION: TYPE 1
- ANTENNA SWITCHING: TYPE 1

DENSO CORPORATION
Remote Keyless Entry System and TPMS (Receiver)
FCC ID: HYQ23AAE

Internal Photos (Variation No.21)



Component Side



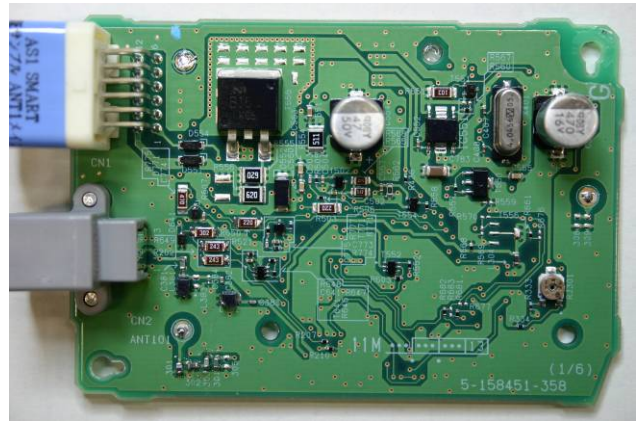
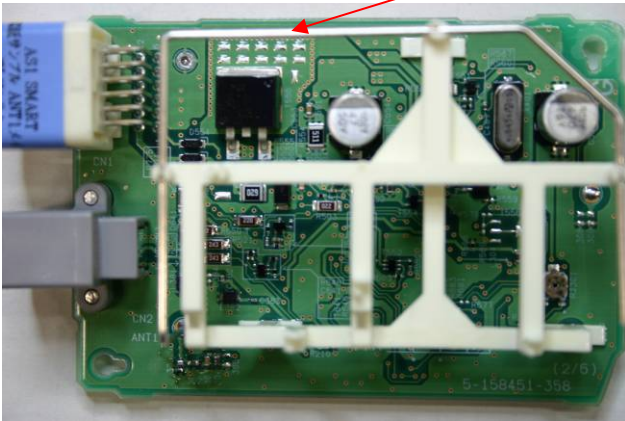
Solder Side

- Inverse F Antenna: TYPE 4
- External Antenna: TYPE 2
- AUTOMATIC LOCATION: TYPE 1
- ANTENNA SWITCHING: TYPE 1

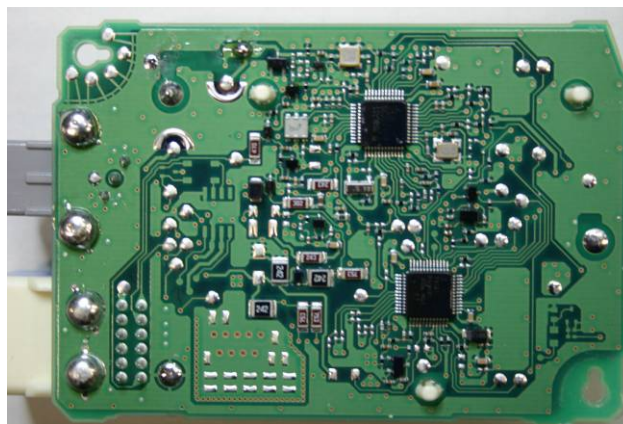
DENSO CORPORATION
Remote Keyless Entry System and TPMS (Receiver)
FCC ID: HYQ23AAE

Internal Photos (Variation No.27)

Antenna



Component Side



Solder Side

- Inverse L Antenna: TYPE 1
- External Antenna: TYPE 2
- AUTOMATIC LOCATION: TYPE 1
- ANTENNA SWITCHING: TYPE 1