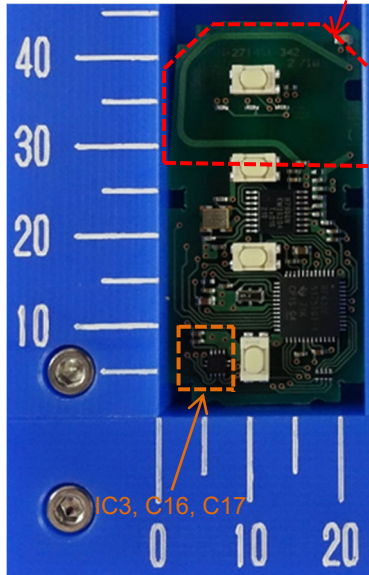
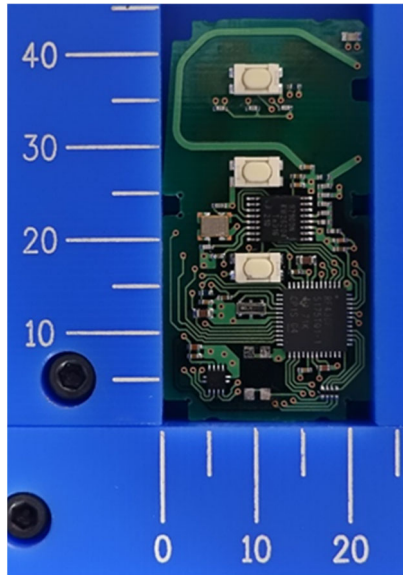


Internal Photos (Type A: IC3, C16 and C17 are mounted.)

Component side Antenna (Tx)

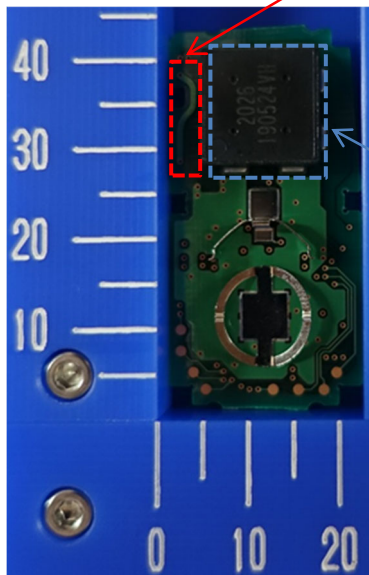


4-Button type



3-Button type

Solder side (Common) Antenna (Tx)



Antenna (Rx)

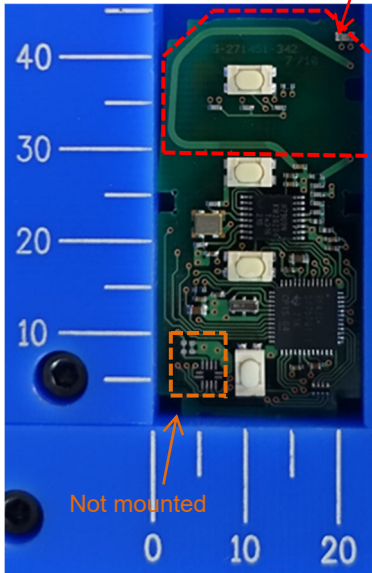
Note:

The difference in the number and / or location of switches has no influence on RF performance.

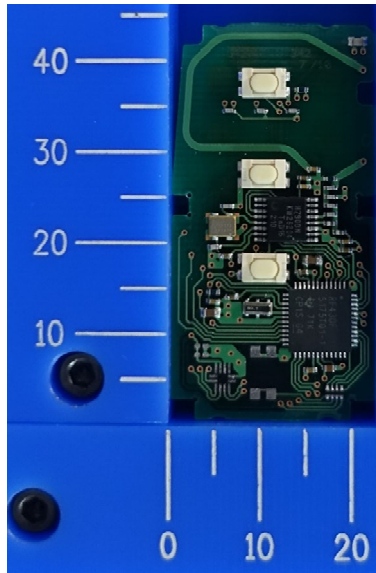
Type A and Type B are equivalent in terms of RF performance.

Internal Photos (Type B: IC3, C16 and C17 are not mounted.)

Component side Antenna (Tx)

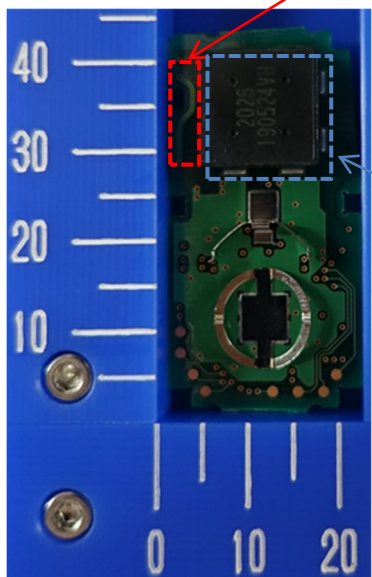


4-Button type



3-Button type

Solder side (Common) Antenna (Tx)



Antenna (Rx)

Note:

The difference in the number and / or location of switches has no influence on RF performance.

Type A and Type B are equivalent in terms of RF performance.