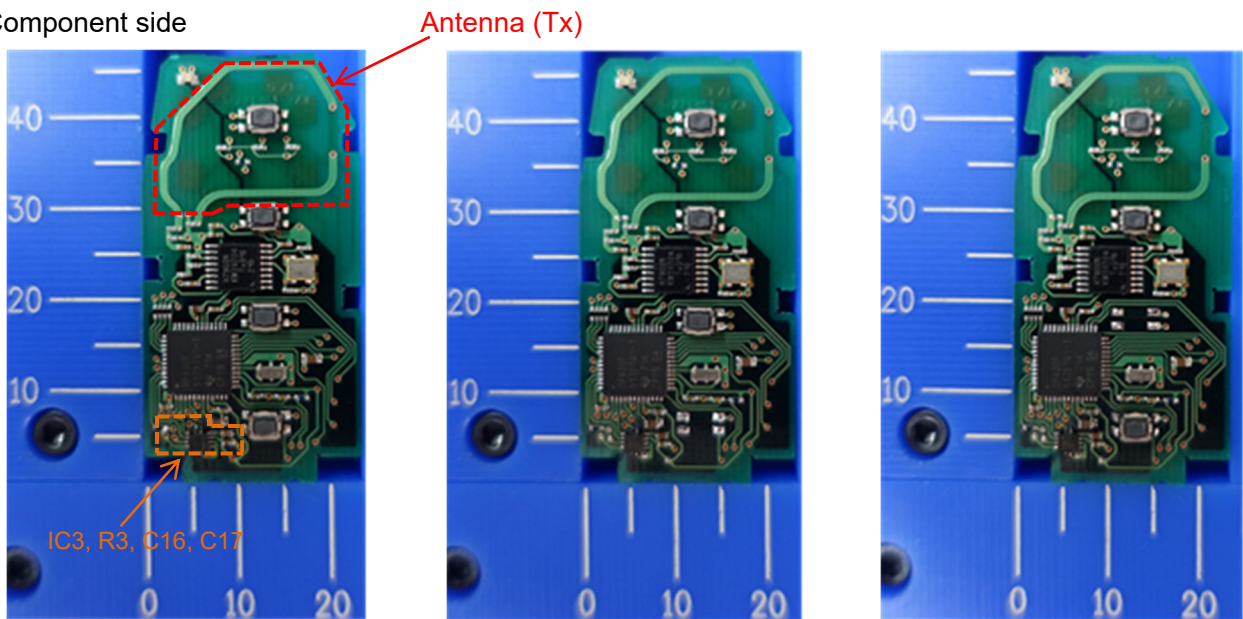


Internal Photos (Type A: IC3, R3, C16 and C17 are mounted.)

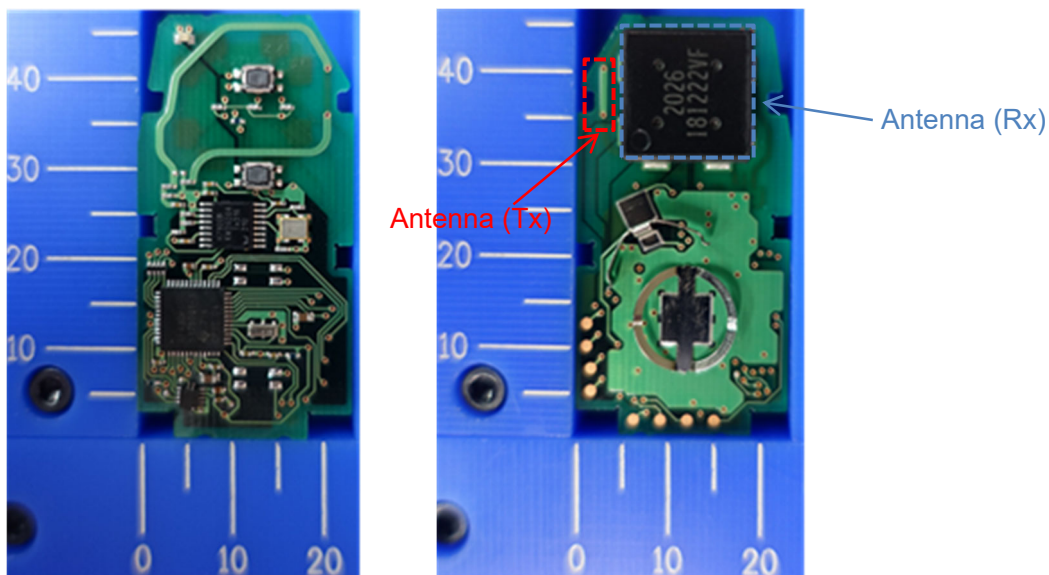
Component side



4-Button type

3-Button type

Solder side (Common)



2-Button type

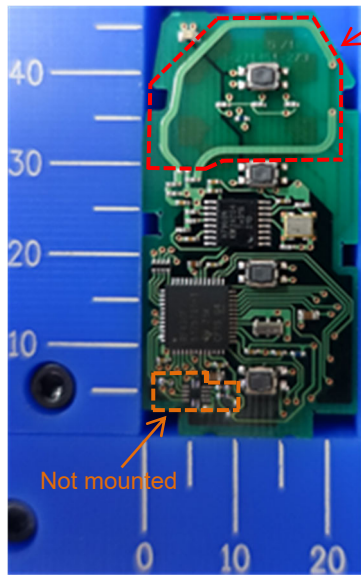
Note:

The difference in the number and / or location of switches has no influence on RF performance.

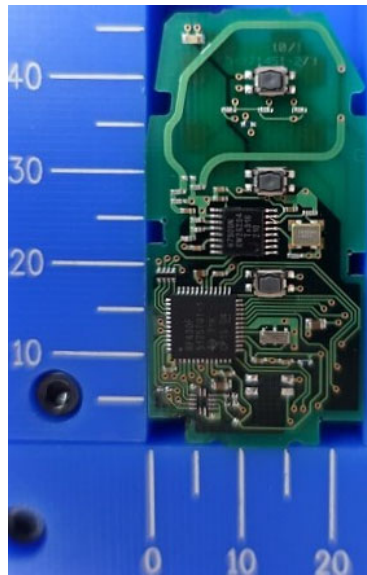
Type A and Type B are equivalent in terms of RF performance.

Internal Photos (Type B: IC3, R3, C16 and C17 are not mounted.)

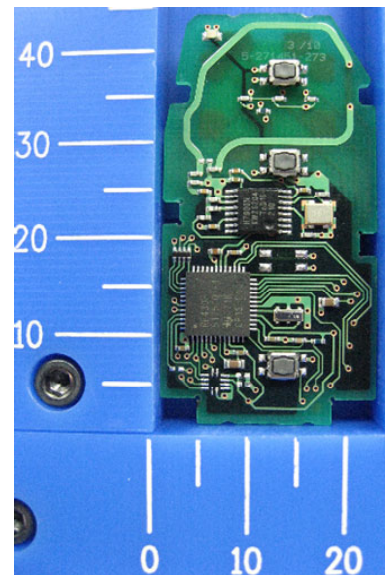
Component side



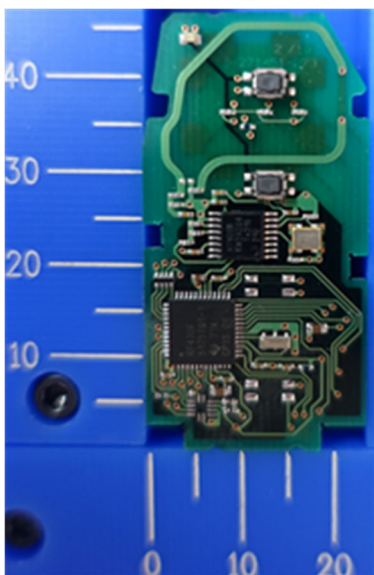
4-Button type



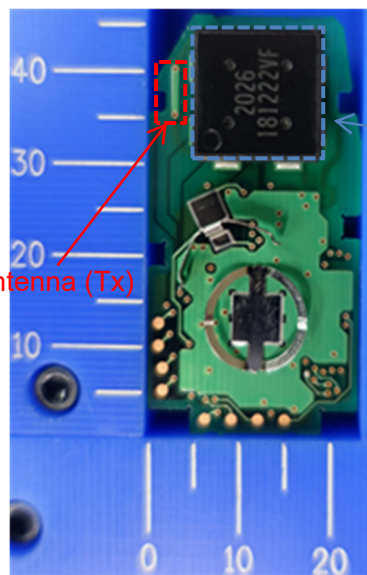
3-Button type



Solder side (Common)



2-Button type



Note:

The difference in the number and / or location of switches has no influence on RF performance.

Type A and Type B are equivalent in terms of RF performance.