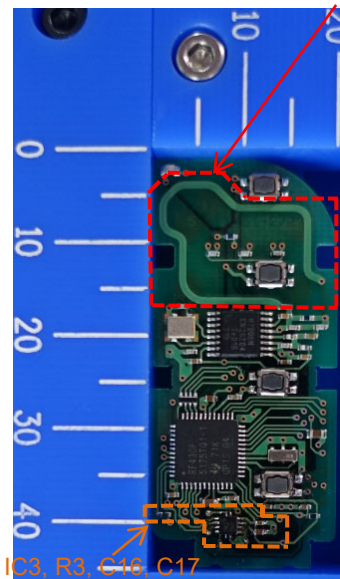
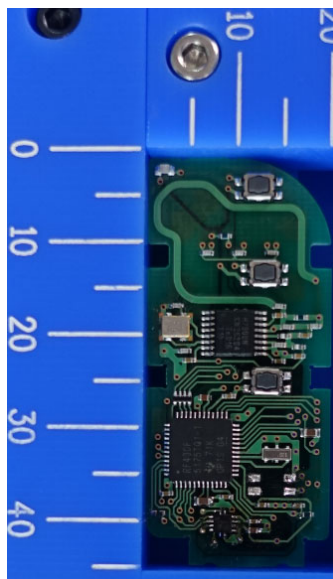


Internal Photos (Type A: IC3, R3, C16 and C17 are mounted.)

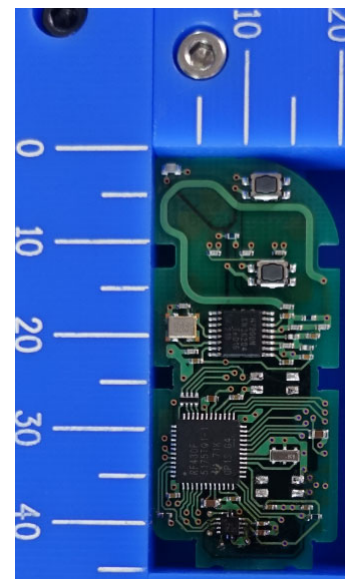
Component side Antenna (Tx)



4-Button type

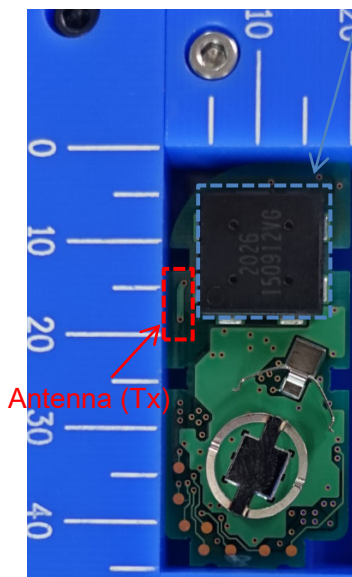


3-Button type



2-Button type

Solder side (Common) Antenna (Rx) Marking location



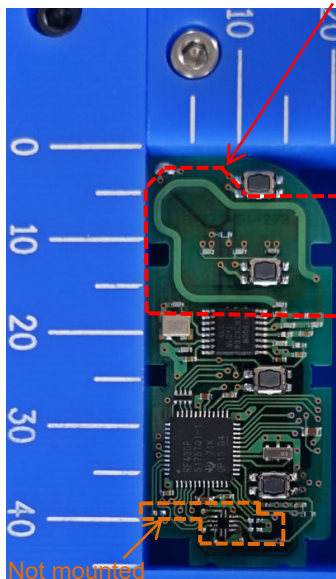
Note:

The difference in the number and / or location of switches has no influence on RF performance.

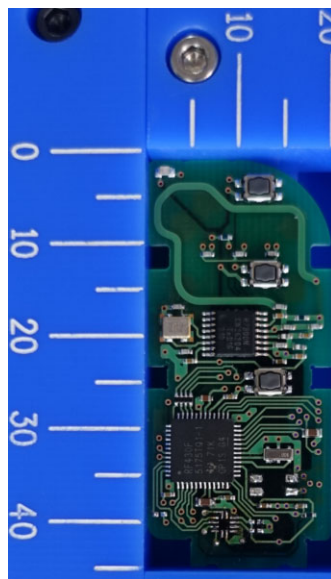
Type A and Type B are equivalent in terms of RF performance.

Internal Photos (Type B: IC3, R3, C16 and C17 are not mounted.)

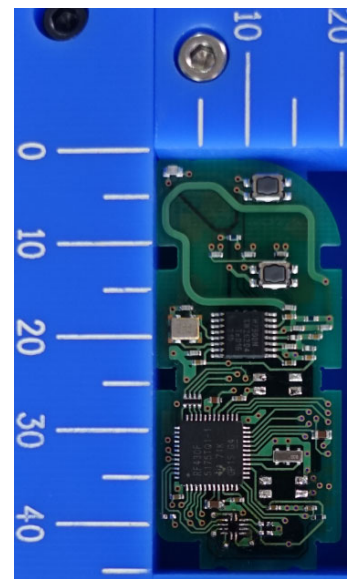
Component side **Antenna (Tx)**



4-Button type



3-Button type

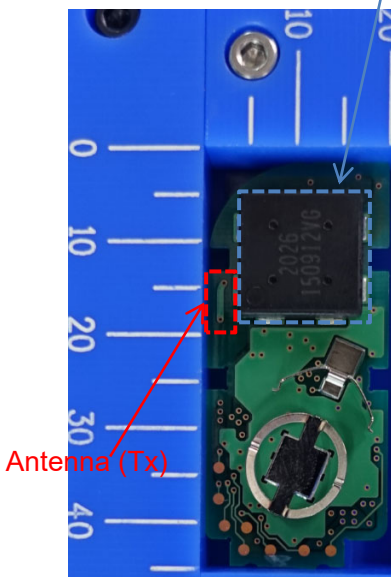


2-Button type

Solder side (Common)

Antenna (Rx)

Marking location



Antenna (Tx)



Marking location

Note:

The difference in the number and / or location of switches has no influence on RF performance.

Type A and Type B are equivalent in terms of RF performance.