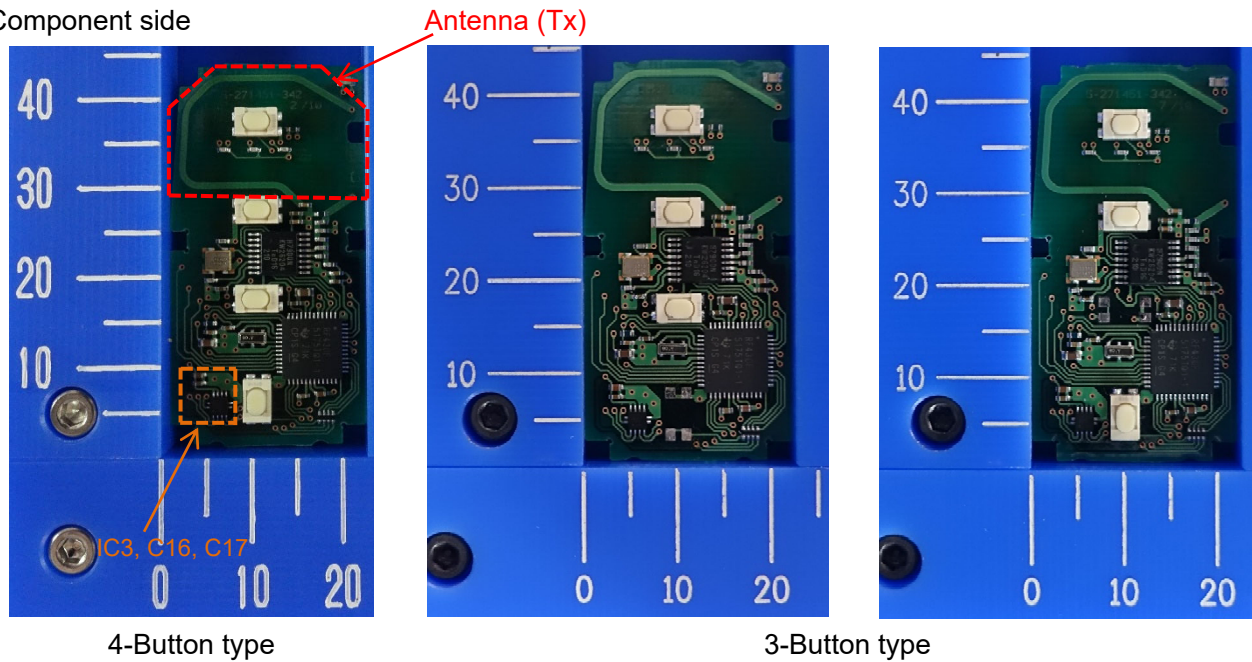
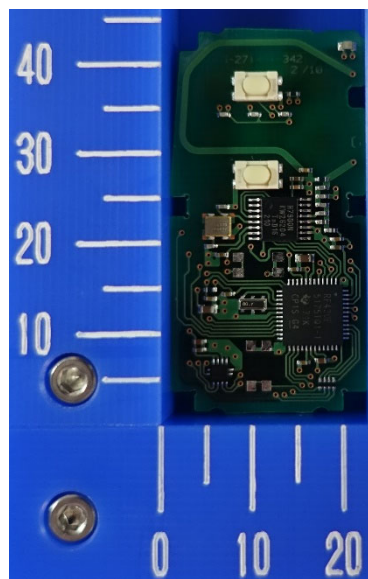


Internal Photos (Type A: IC3, C16 and C17 are mounted.)

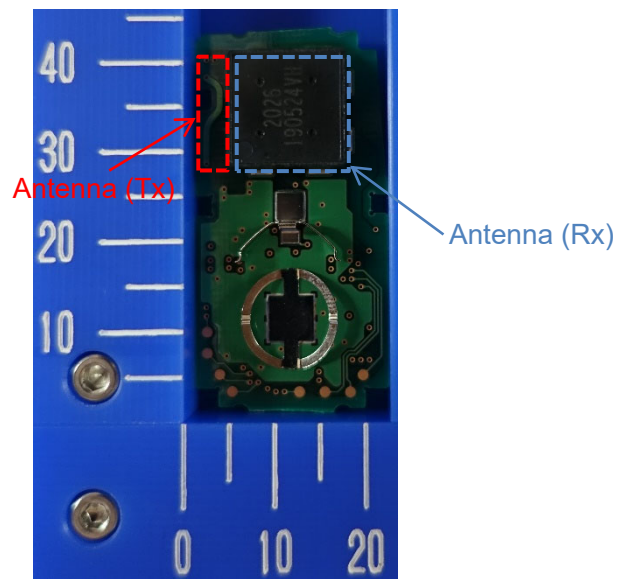
Component side



Component side



Solder side (Common)



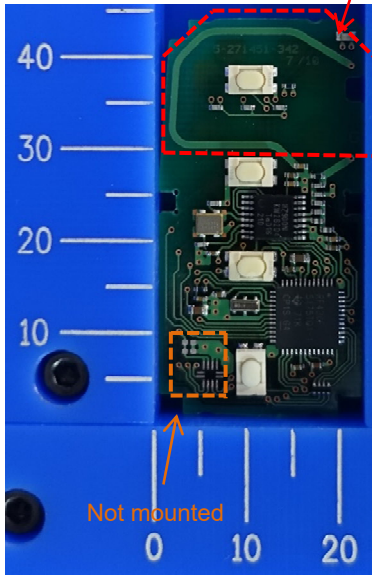
Note:

The difference in the number and / or location of switches has no influence on RF performance.

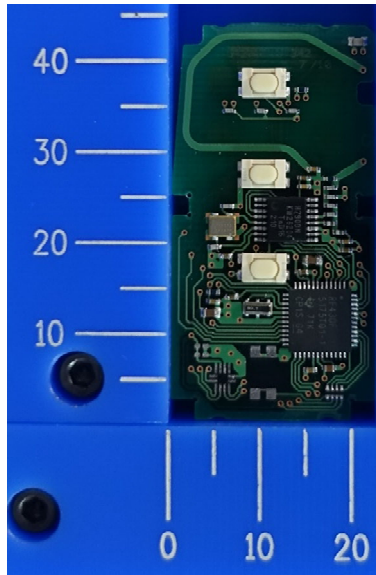
Type A and Type B are equivalent in terms of RF performance.

Internal Photos (Type B: IC3, C16 and C17 are not mounted.)

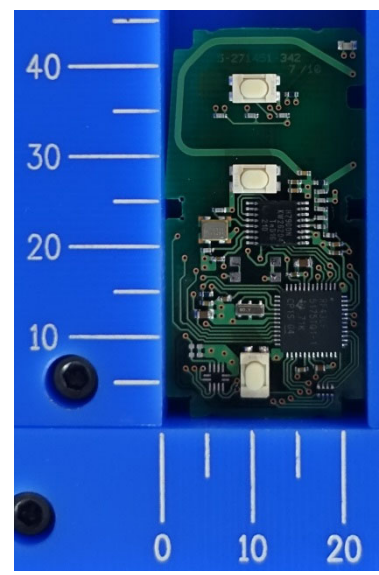
Component side **Antenna (Tx)**



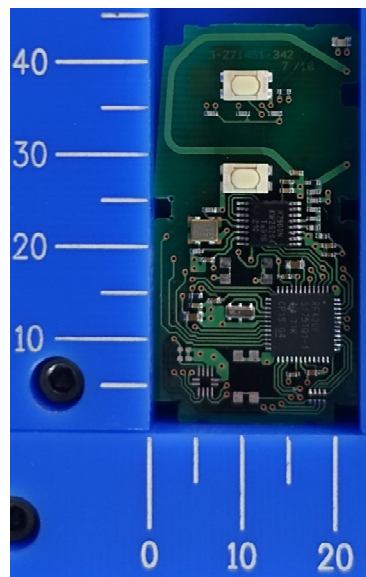
4-Button type



3-Button type

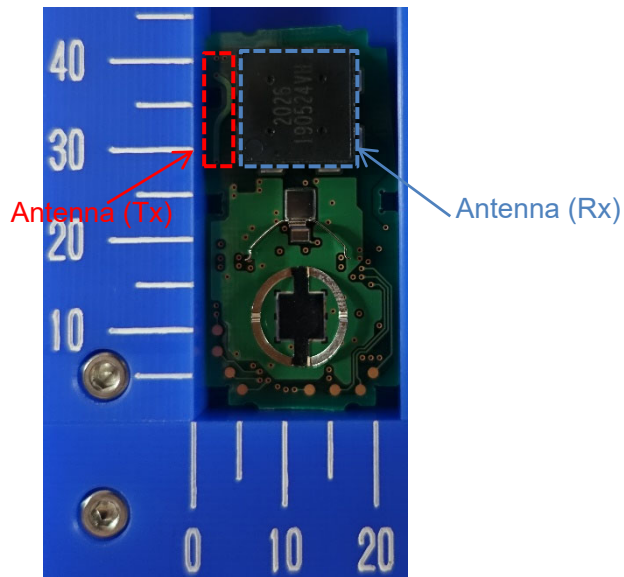


Component side



2-Button type

Solder side (Common)



Note:

The difference in the number and / or location of switches has no influence on RF performance.

Type A and Type B are equivalent in terms of RF performance.