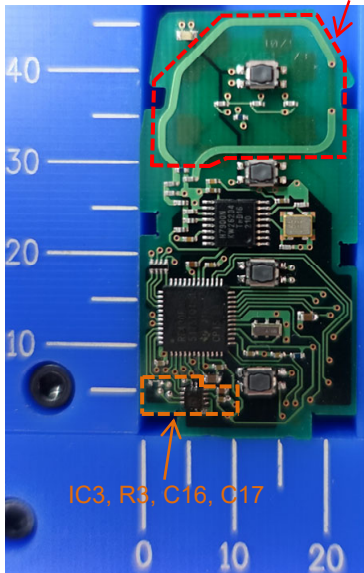


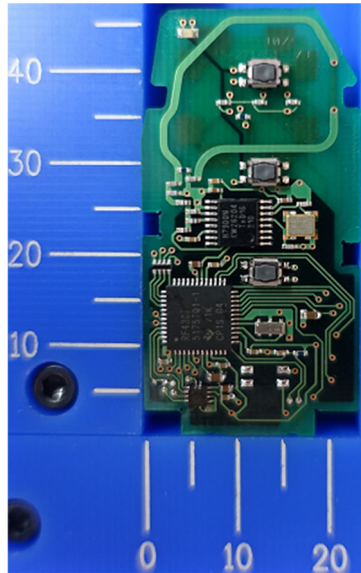
**DENSO CORPORATION**  
**Electronic Key**  
**FCC ID: HYQ14FLA**  
**IC Number: 1551A-14FLA**

Internal Photos (Type A: IC3, R3, C16 and C17 are mounted.)

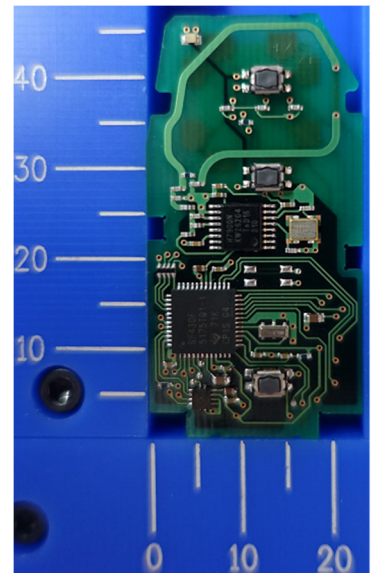
Component side **Antenna (Tx)**



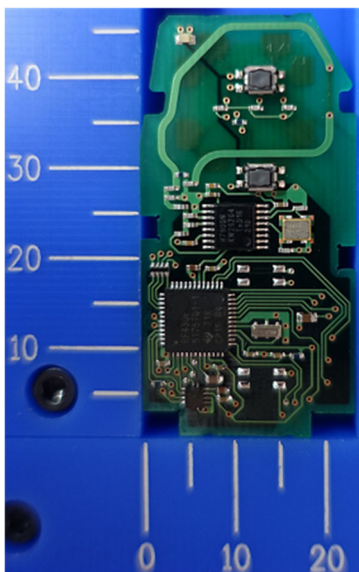
4-Button type



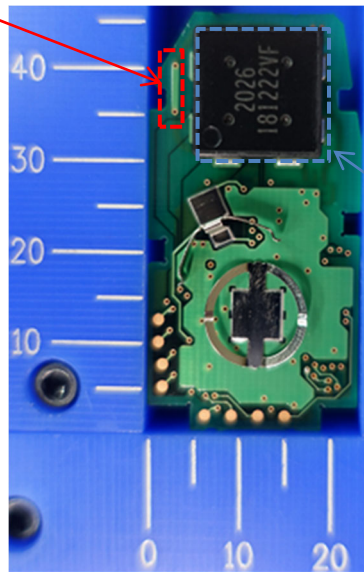
3-Button type



**Antenna (Tx)** Solder side (Common)



2-Button type



Antenna (Rx)

Note:

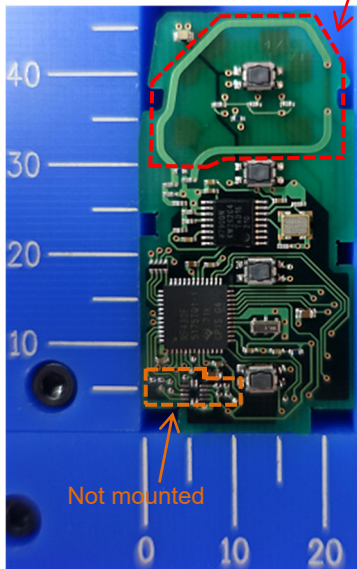
The difference in the number and / or location of switches has no influence on RF performance.

Type A and Type B are equivalent in terms of RF performance.

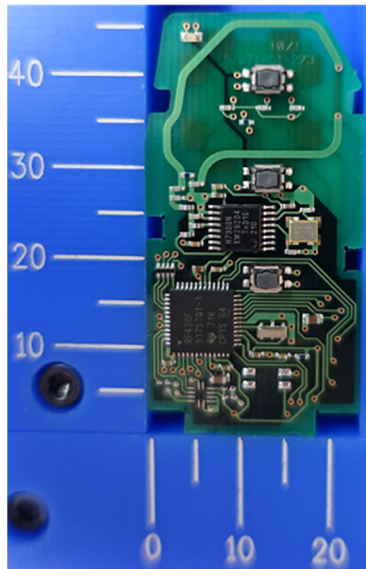
**DENSO CORPORATION**  
**Electronic Key**  
**FCC ID: HYQ14FLA**  
**IC Number: 1551A-14FLA**

Internal Photos (Type B: IC3, R3, C16 and C17 are not mounted.)

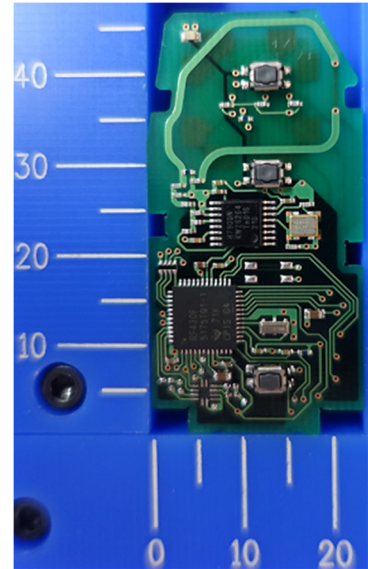
Component side **Antenna (Tx)**



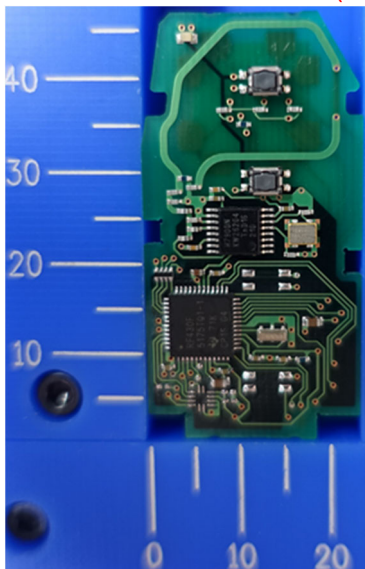
4-Button type



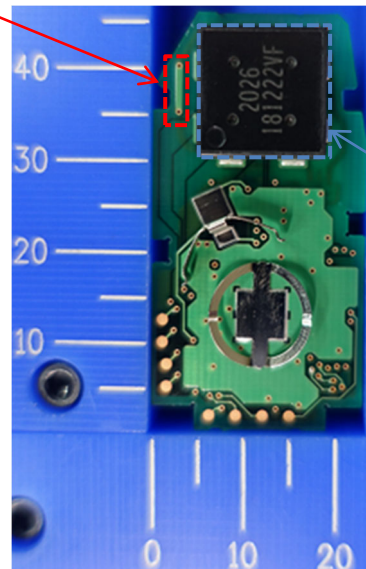
3-Button type



**Antenna (Tx)** Solder side (Common)



2-Button type



Antenna (Rx)

Note:

The difference in the number and / or location of switches has no influence on RF performance.

Type A and Type B are equivalent in terms of RF performance.