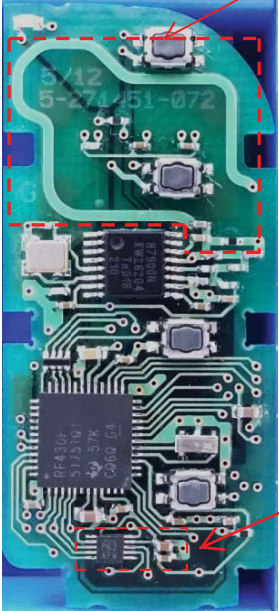


Internal Photos (Type A: IC3, C16 and C17 are mounted.)

Component side

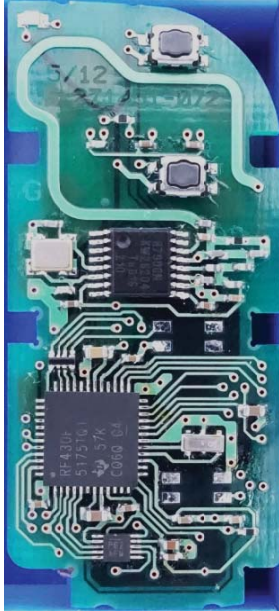
Antenna (Tx)



4-Button type



3-Button type

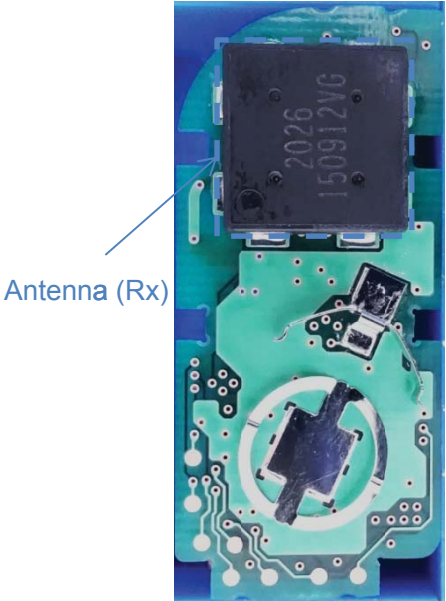


2-Button type

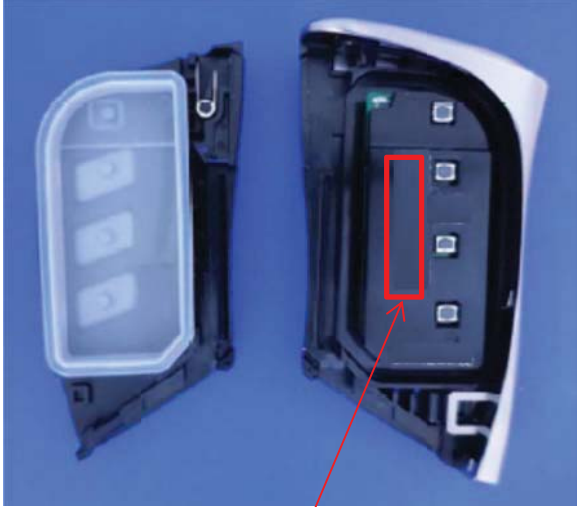
IC3, C16, C17

Solder Side (Common)

Marking location (Common)



Antenna (Rx)



Marking location

Note:

The difference in the number of switches has no influence on RF performance.

Type A and Type B are equivalent in terms of RF performance.

Internal Photos (Type B: IC3, C16 and C17 are not mounted.)

Component side

Antenna (Tx)



4-Button type

Solder Side (Common)

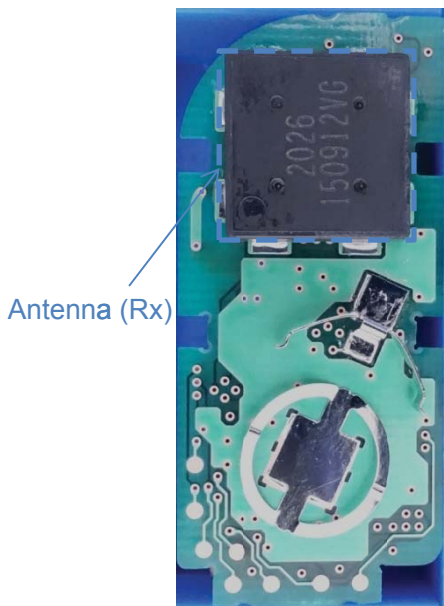


3-Button type

Marking location (Common)



2-Button type



Marking location

Note:

The difference in the number of switches has no influence on RF performance.