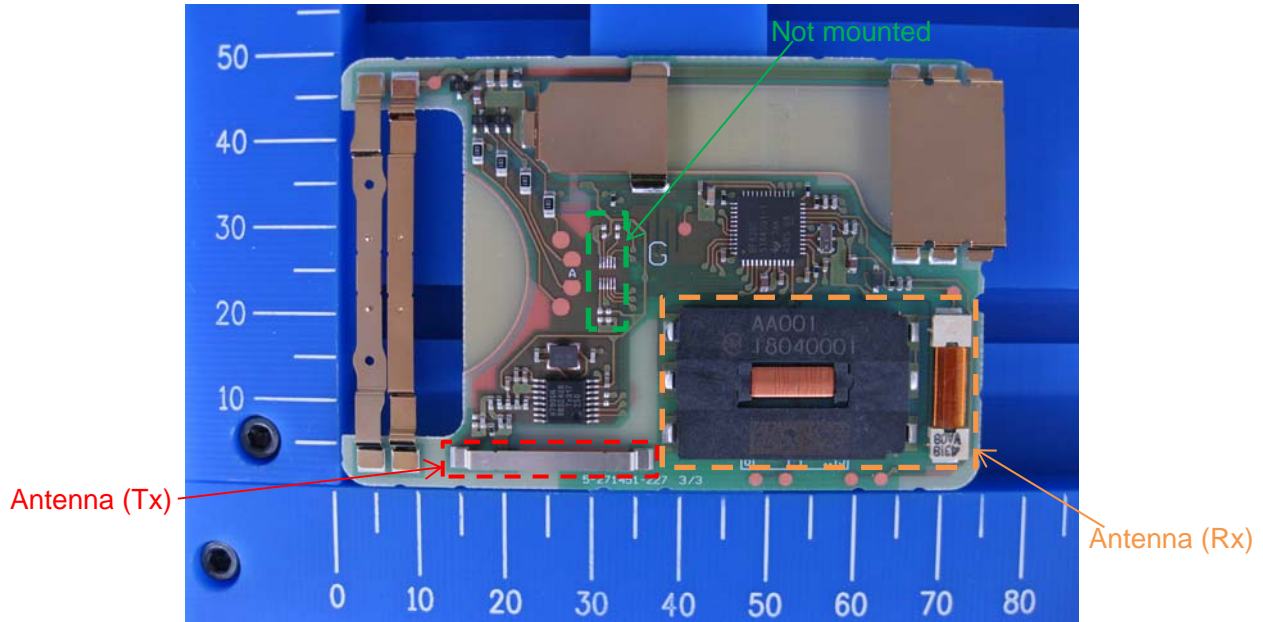
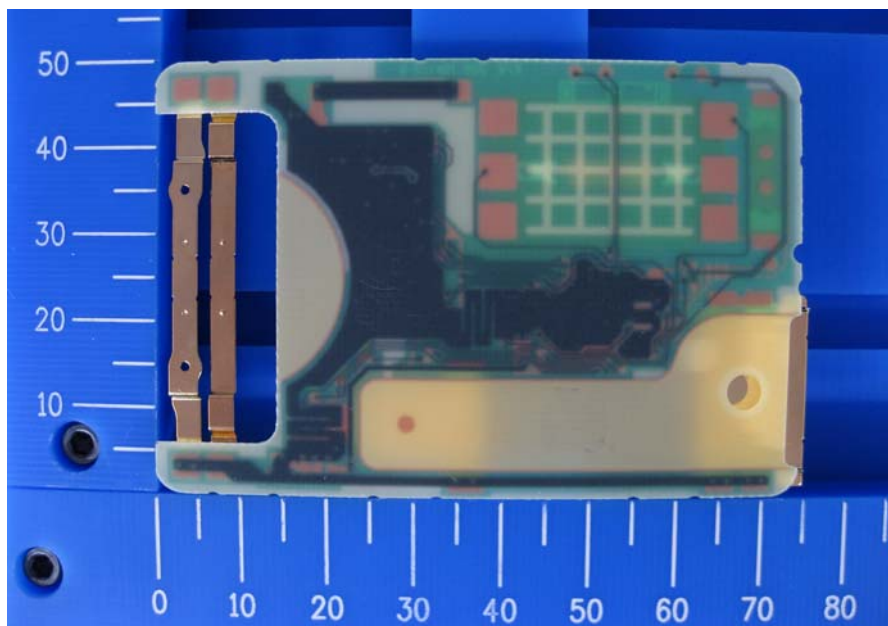


Internal Photos (Type A: IC3, R11, C44, C45 and C46 are not mounted.)



Component side



Solder side

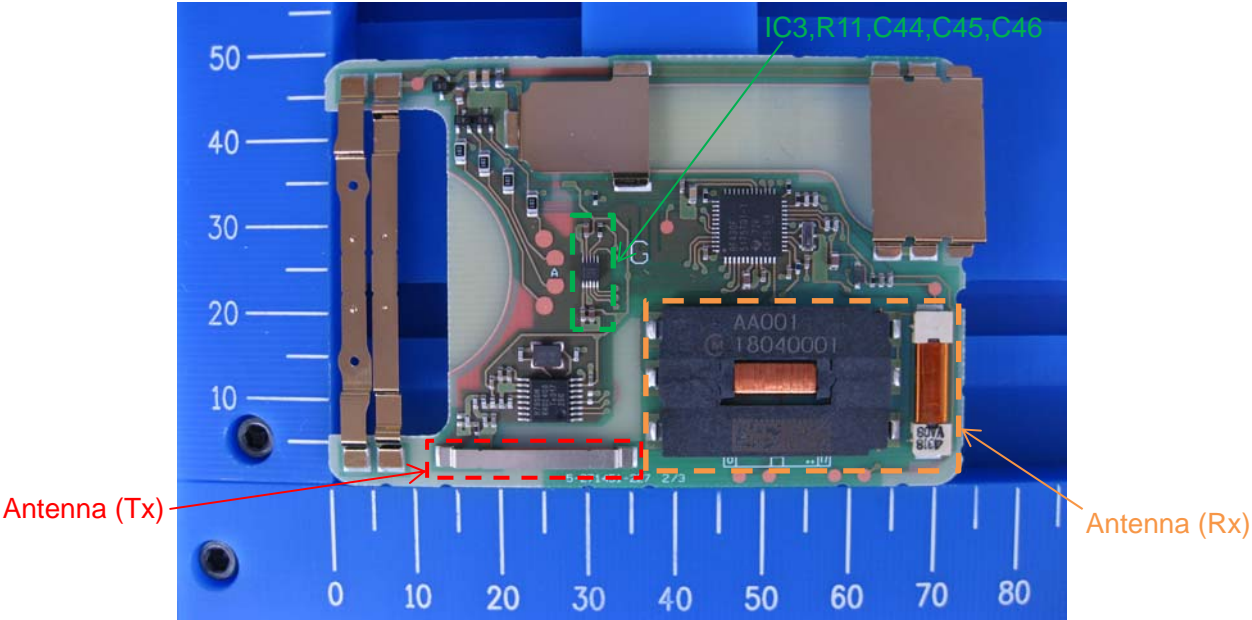
Note:

Type A and Type B are equivalent in terms of RF performance.

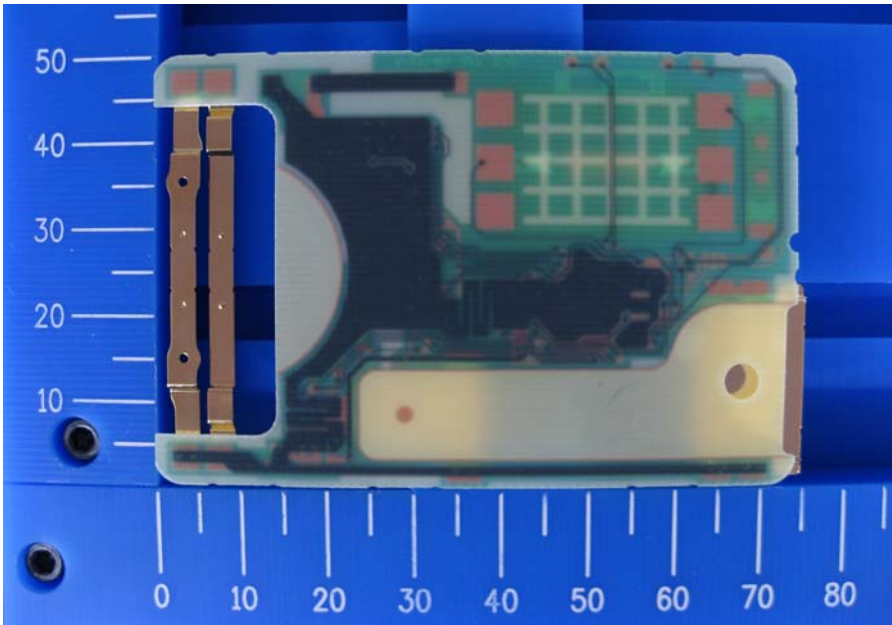
Following parts may be coated with gold or nickel: battery terminal, plates to hold a mechanical key.

This difference has no influence on RF performance.

Internal Photos (Type B: IC3, R11, C44, C45 and C46 are mounted.)



Component side



Solder side