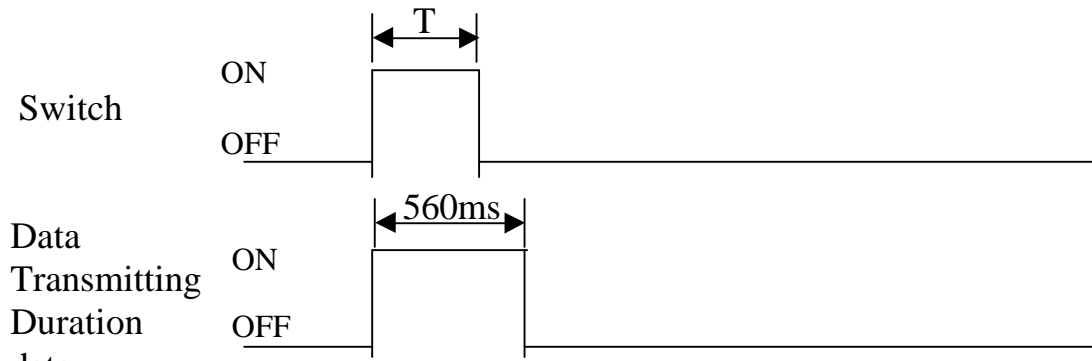


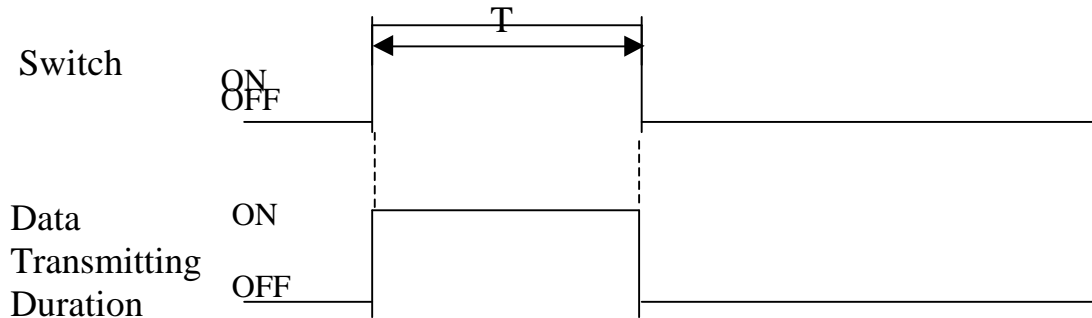
Transmission time chart of 12BBM (Mass production)

1) Switch ON time : $T < 560$ ms



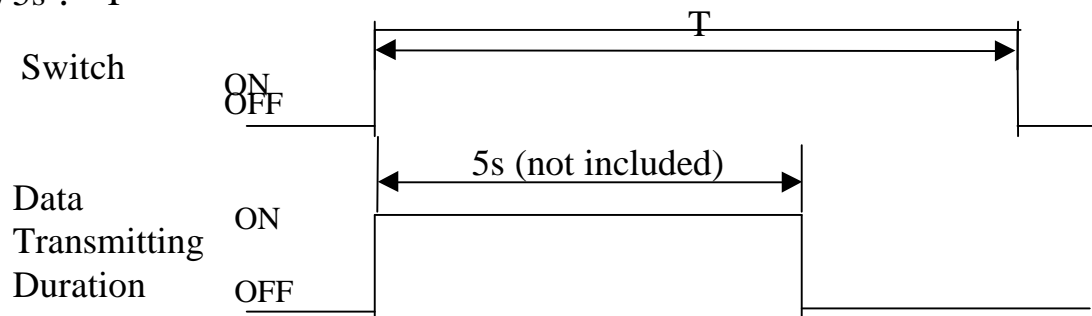
The transmitter sends the data till 560ms from the switch ON.

2) 560 ms ? $T < 5$ s



The transmitter sends the data while the switch is pressed.

3) 5s ? T



When the switch is pressed for more than 5s, the transmitter stops sending the data in 5s (not included) from switch ON. (Auto-power off function)