



鴻友科技股份有限公司

Mustek Systems Inc.

新竹市新竹科學園區研發二路 25 號

No. 25, R&D Rd., II Science-Based Industrial Park, Hsin-Chu, Taiwan, R.O.C.

Tel: 886-3-577-9373 Fax: 886-3-578-4139

FCC ID.: HWFA4CIS-USB

## EXHIBIT 4

## User Manual

INSTRUCTIONS MANUAL  
FEDERAL COMMUNICATIONS COMMISSION  
INTERFERENCE STATEMENT

This equipment has been tested and found to comply with the limits for a Class B digital device, pursuant to Part 15 of the FCC Rules. These limits are designed to provide reasonable protection against harmful interference in a residential installation. This equipment generates, uses and can radiate radio frequency energy and, if not installed and used in accordance with the instructions, may cause harmful interference to radio communications. However, there is no guarantee that interference will not occur in a particular installation. If this equipment does cause harmful interference to radio or television reception, which can be determined by turning the equipment off and on, the user is encouraged to try to correct the interference by one or more of the following measures:

- Reorient or relocate the receiving antenna.
- Increase the separation between the equipment and receiver.
- Connect the equipment into an outlet on a circuit different from that to which the receiver is connected.
- Consult the dealer or an experienced radio/TV technician for help.

CAUTION:

To assure continued FCC compliance:

- (1) Any changes or modifications not expressly approved by the grantee of this device could void the user's authority to operate the equipment.

FCC Label Compliance Statement:

This device complies with Part 15 of the FCC Rules. Operation is subject to the following two conditions: (1) this device may not cause harmful interference, and (2) this device must accept any interference received, including interference that may cause undesired operation.

# 1200 UB Scanner Installation Guide

## 1 Unpacking the Scanner

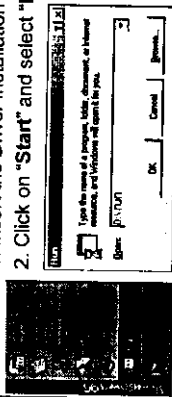
Unpack the package and inspect the items closely to make sure no item is damaged.

- The package should include:
- The Scanner
  - 1200 UB Scanner Installation Guide
  - Installation CD
  - Scanning Utilities Manual (either included in the Installation CD or printed separately)

## 2 Driver Installation

**NOTE:** Please complete the driver installation before installing the Scanner.

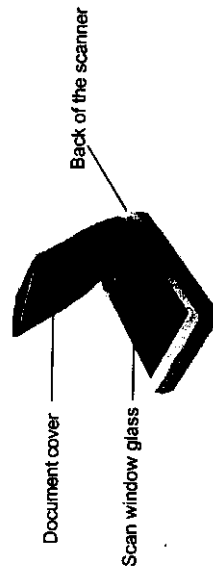
1. Insert the Driver Installation CD into your disk drive.
2. Click on "Start" and select "Run".
3. In the "Run" dialog box, type "drive:\run" where drive is your CD-ROM drive and click "OK."



4. Follow all on-screen instructions.

**NOTE:** When you are presented with the option of whether to restart Windows after completing the driver installation please choose "Yes".

## 3 The Scanner Parts



## 4

### Connecting the Scanner to the PC

With the power to your PC on, connect the scanner's USB cable to the USB port of your PC. Upon connecting the scanner's USB cable, the Windows operating system would automatically detect your scanner and update your system configuration.

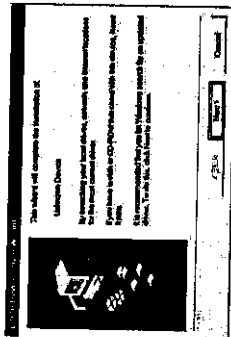


## E

### 4A For Windows 95 OSR2 Users:

Upon installing the software driver and connecting the scanner's USB cable if the Update Device Driver Wizard dialog box appears, perform the following steps:

1. Click on the "Next" button.
2. On the next screen click on the "Other Locations" button and go into the "Win95" directory of your installation CD.
3. Click on the "OK" button and on the next screen Windows will confirm that it has found the driver for your scanner.
4. Follow all on-screen instructions to complete driver installation.

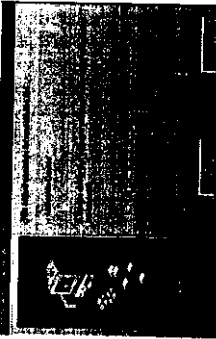


### 4B

### For Windows 98 Users:

Upon installing the software driver and connecting the scanner's USB cable if the Add New Hardware Wizard dialog box appears, perform the following steps:

1. Click on the "Next" button.
2. On the next screen select the following option and go into the Win98 directory of your installation CD.



- 4** 3. Click on the "OK" button and on the next screen Windows will confirm that it has found the driver for your scanner.  
4. Click the "Finish" button to exit.

**NOTE:** Since your scanner model is equipped with a Cover Sensor, upon raising the cover of your scanner you will be given a choice on whether to use the Scan Dialog box (refer to the Scanning Utilities Manual) that came with your scanner or use the Imaging program (refer to your Windows 98 reference guide) that is built in to your Windows 98 operating system.

### **5 Using the Scanner**

There are two separate methods to scan an image, the Scan Dialog box and the TWAIN Dialog box. Refer to the Scanning Utilities Manual for a description of these to facilitate your use of the scanner, or refer to the on-line manual and help system any time when using the scanner software. This easy-to-use system contains detailed information about the scanner topics and its functions.

**5A** To access the Scan Dialog box, you can do any of the following:

- 1. The Cover Sensor:** Simply lift the cover and begin scanning. This scanner is equipped with a Cover Sensor feature that automatically opens the Scan Dialog box; or
- 2. The Direct Scan Icon:** Double-click the Direct Scan icon, located in your Windows taskbar; or
- 3. The Scan Dialog Box Item:** Click on "Start" on your Windows desktop and locate the name of your scanner model under "Programs". Then double-click the item "Scan Dialog Box".

**5B** To access the TWAIN Dialog box, you can do the following:

- 1. Launch the TWAIN-compliant program** (e.g. Photo Express).  
**Scanner OR** Click the Scanner icon.

The Select Data Source dialog box appears.

- 3. Choose your scanner model from the list.**

Click on the "Acquire" button.

The Select Data Source dialog box closes.

The TWAIN Dialog box appears.

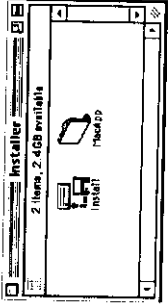
**5C** To access the on-line manual:

- 1. Click on "Start" and select "Programs".**
- 2. Click on your scanner model and select "Scanner's User's Guide".**

## **6 Driver Installation (iMac)**

**NOTE:** Please complete the driver installation before installing the Scanner. Do not connect the scanner's USB cable to the scanner at this stage.

- 1. Insert the Driver Installation CD into your disk drive.**
- 2. Wait for the Installer icon to appear on your desktop.**
- 3. Double-click on the Installer icon to open the Installer dialog box.**



- 4. Double-click on the Install icon.**

- 5. Continue to follow all on-screen instructions to complete the driver installation.**

### **6A Connecting the Scanner to the iMac**

With the power to your iMac on, connect the scanner's USB cable to the USB port of your iMac.

## 7

### Specifications

Scanner Type	Color Flatbed
Scan Area	21.6 cm x 29.7 cm (8.5" x 11.7")
Scan Modes:	
True Color	36-bit, 68.7 billion colors
Gray Mode	48-bit (software enhanced)
Text/Line Art	12-bit, 4096 shades of gray
Scan Method	1 bit/pixel (2 levels)
Resolution Control:	Single Pass Scanning
Optical	600dpi (H) x 1200dpi (V)
Enhanced	19200dpi x 19200dpi (software controlled)
Scanning Data Buffer	32KB (maximum)
Power Consumption	2.5 Watt (5V, 0.5A) Bus power
Operating Temperature	10°C ~ 40°C (50°F ~ 104°F)
Operating Humidity	35% ~ 80% RH, Non-Condensing
Storage Temperature	-10°C ~ 60°C (14°F ~ 140°F)
Storage Humidity	20% ~ 80% RH, Non-Condensing
Dimensions:	414 x 269 x 52 mm
Weight:	16.3 x 10.6 x 2.1 inches (L x W x H) 2.3 Kg (5.06 lbs.)