

EXHIBIT 5

User's Manual

User's Manual

Copyright Information

All rights reserved. No part of this publication may be reproduced, transmitted, stored in a retrieval system, or translated into any language in any form by any means, mechanical, optical, electronic, recording, or otherwise, without the written permission of Mustek, Incorporated.

Mustek Incorporated reserves the right to revise this manual and to make changes to any or all parts at any time, without obligation to notify any person or entity of such revisions and changes.

Mustek is a registered trademark of Mustek, Incorporated. All other brand or product names mentioned in this manual are trademarks or registered trademarks of their respective owners.

Copyright © 1998 Mustek, Incorporated.
Printed in Taiwan, June 1998.

FCC Statement

This digital equipment has been tested and found to comply with the limits for a Class B digital device, pursuant to Part 15 of the FCC Rules. These limits are designed to provide reasonable protection against harmful interference when the equipment is operated in a residential installation. This equipment generates, uses, and can radiate radio frequency energy and if it is not installed and used according to the instruction manual, it may cause harmful interference to radio communications. However, there is no guarantee that interference will not occur in a particular installation. If this equipment causes harmful interference to radio or television reception, which can be determined by turning the equipment off or on, you are encouraged to try to correct the interference by one or more of the following measures:

- Reorient the receiving antenna
- Increase the distance between the equipment and the receiver
- Connect the equipment into an outlet on a circuit different from that to which the receiver is connected
- Consult the dealer or an experienced radio/TV technician for help

NOTE

1. The changes or modifications not expressly approved by the party responsible for compliance could void the user's authority to operate the equipment.
2. Shielded interface cables and AC power cord, if any, must be used in order to comply with the emission limits.

PC INSTALLATION

A3 SP

Technical Support +49-2131-162840 ·
BBS 24 hours +49-2131-167104 or +49-2131-130052
www.mustek-europe.com

1 Unpacking the Scanner

Unpack the package and inspect the items closely to make sure no item is damaged.

The package should include:

A Scanner

A SCSI cable

A power supply adapter

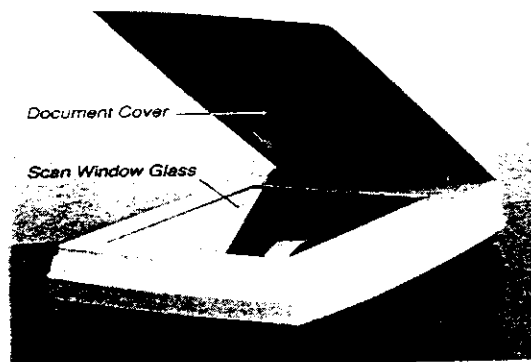
A SCSI interface card

DTC SCSI driver floppy disk

Scanner installation CD

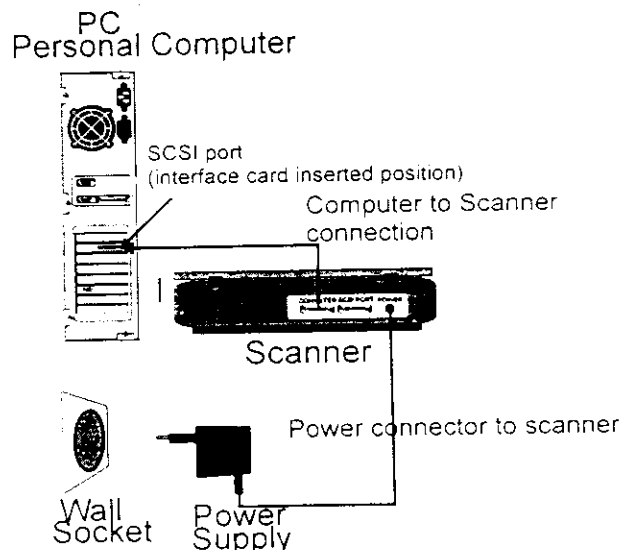
UK

2 The Scanner Parts

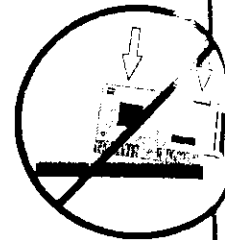


3 Hardware setup

Refer to the following illustration and steps below to install your scanner.
Step 1. Make sure the scanner and the computer are powered off and disconnected from their power source.



- Step 2. Remove the computer cover.
- Step 3. Select an empty ISA slot inside your computer and remove its back plate.
- Step 4. Unpack the SCSI interface card from the scanner package.
- Step 5. Make sure the the card is inserted into the slot directly, not at an angle.
- Step 6. Insert the SCSI interface card firmly into the empty slot (in **Step 3**) and screw in the card's metal plate.
- Step 7. You may put back the computer cover after completing **Step 5 and Step 6**.
- Step 8. Connect one end of the included SCSI cable to the **COMPUTER** port on the back of the scanner.
- Step 9. Connect the other end of the SCSI cable to the **SCSI** port of the interface card that you inserted in **Step 6**.
- Step 10. Connect the power supply adapter to the scanner and plug it into an appropriate power outlet.
- Step 11. Power on the computer and wait for the computer to finish booting.



Since you already have successfully installed "Scanner Installation CD", you need to locate "Scanner User's Guide" in the Windows Start Menu under the address Programs. Choose your scanner model, then Scanner User's Guide. Open it.

4

DTC SCSI Driver Installation

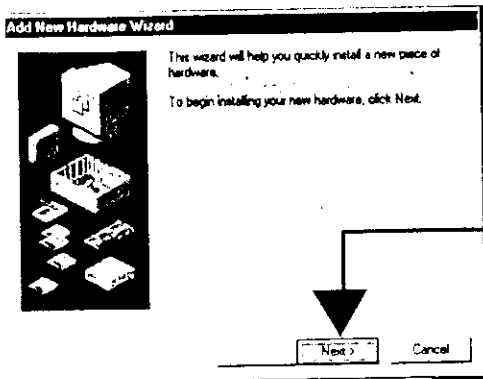
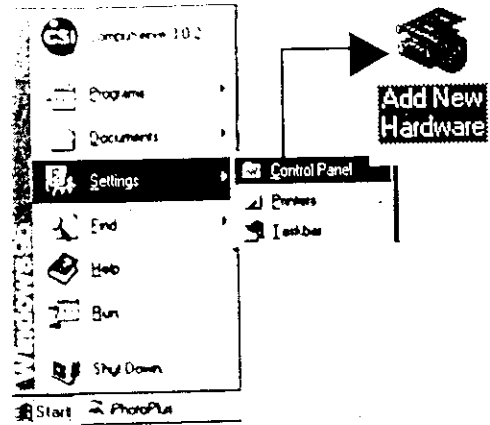
Very important! You must install the DTC SCSI driver disk before the scanner installation CD. Please do not use Win3.1 driver for Windows 95 or NT.

► For Win 3.1x

- Step 1 From the program manager, click on the **File** menu and select **Run**.
- Step 2 Insert the SCSI floppy disk to the floppy drive.
- Step 3 In the **Run** dialog box, type **a:\win3.1\setup.exe** where **a** is your floppy drive.
- Step 4 Follow the on-screen instructions and click **OK** to complete the installation.

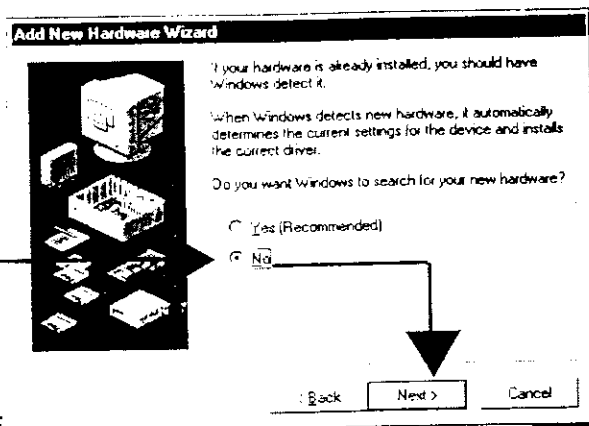
▶ For Win 95

Step 1 From the Control Panel, double click the Add New Hardware icon.

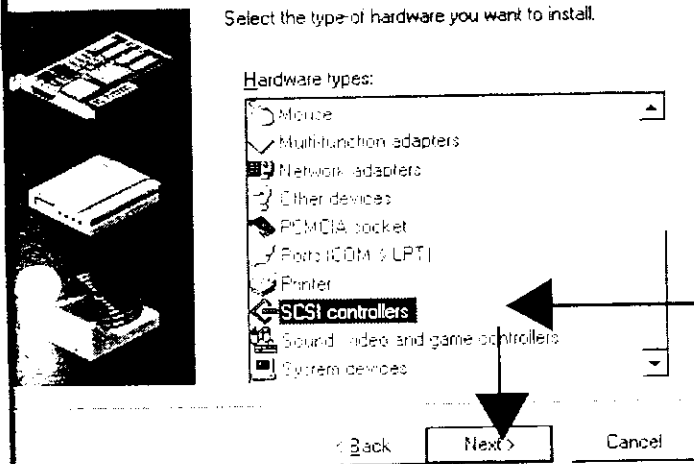


Step 2 Click **Next** in the Add New Hardware Wizard dialog box.

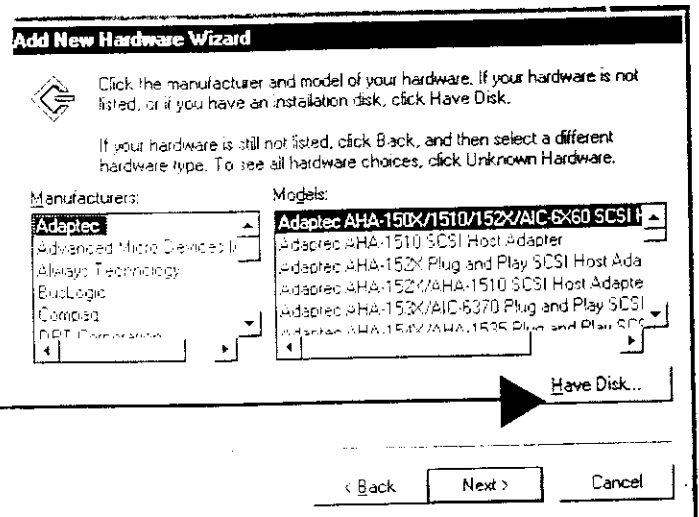
Step 3 On the **Add new hardware wizard**, select **No** then click **Next** in the dialog box.



New Hardware Wizard



Step 4 Scroll down the Hardware types and select **SCSI Controllers**



Step 5 Select **Have Disk** to access the SCSI floppy disk

Step 6 Insert the SCSI driver floppy disk into the floppy drive and type the location of floppy drive in the dialog.

Step 7 Click **Next** to complete the SCSI driver installation.

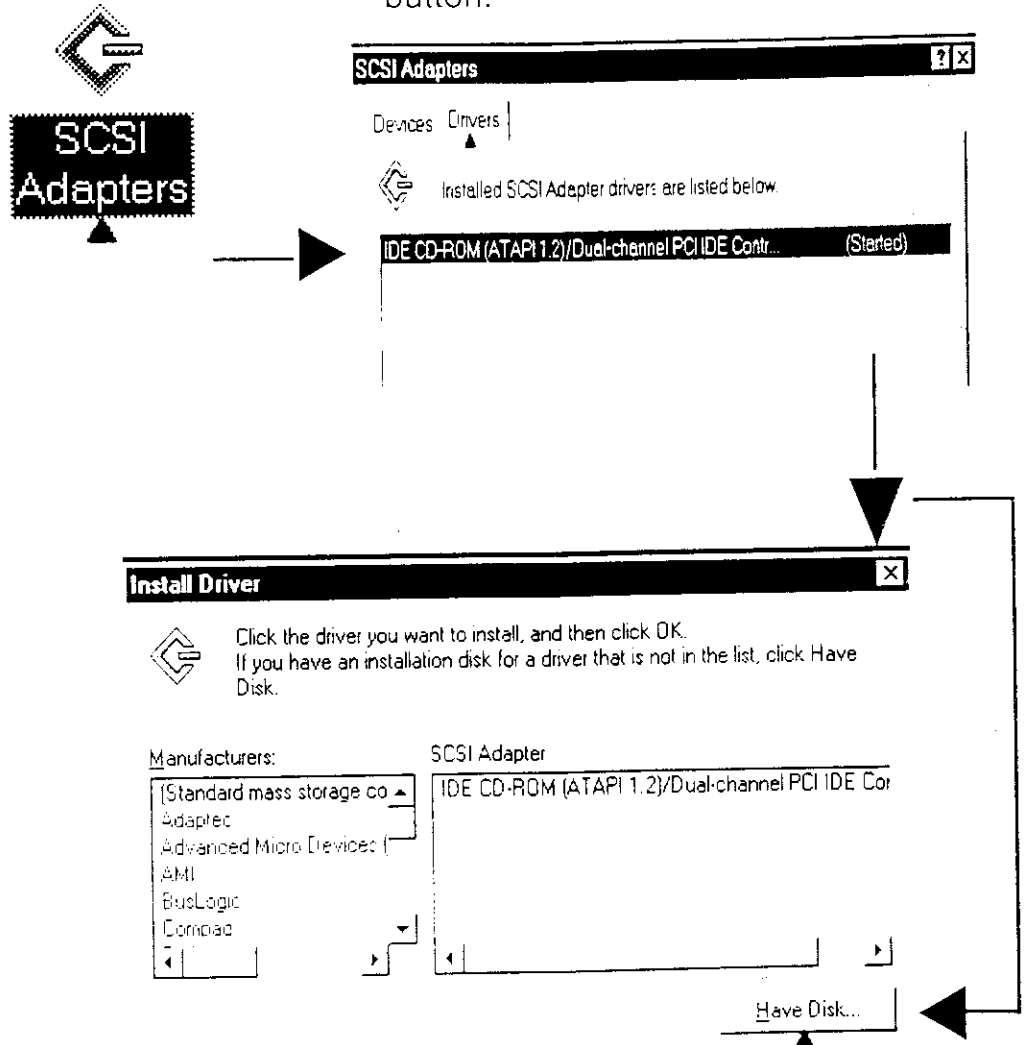
UK

► For Win NT 4.0

Now, get ready to install the SCSI driver for your Win NT 4.0.

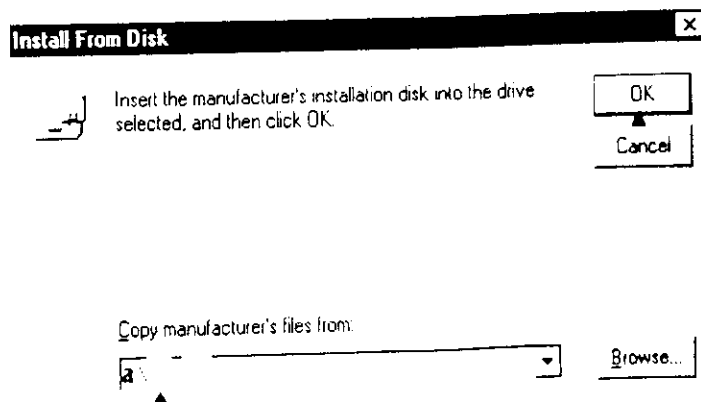
Step 1 From the Control Panel, select the **SCSI Adapters** icon.

Step 2 Choose the Drivers tab and click the **Add** button.



Step 3 Select **Have Disk** in the Install Driver dialog box.

Step 4 Insert the SCSI driver floppy disk into the floppy drive and type in the location of the floppy drive (**a:**) in the dialog and click **OK**.



Step 5 Continue to follow all on-screen instructions.



Click the driver you want to install, and then click OK.
If you have an installation disk for a driver that is not in the list, click Have Disk.

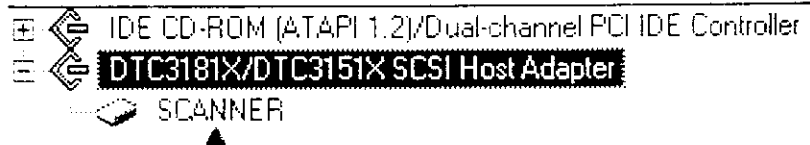
SCSI Adapter

DTC3181X/DTC3151X SCSI Host Adapter

Checking if the SCSI installation is successful...

Important! Windows NT when the scanner is powered on before Windows NT.

- Step 1 Power on the scanner before starting Win NT.
- Step 2 Start Win NT and open the Control Panel, choose the SCSI Adapters icon and select the Devices Tab.
- Step 3 The SCSI adapter will be identified in the list if the installation is successful.



5

Scanner driver and Software Installation

1. Insert the **Scanner Installation CD** to your CD ROM drive. Click on **Start** for Windows 95 or on File menu for Windows 3.1x, and select Run.
2. In the "Run" dialog box, type "**drive:\run**" where the **drive** is your CD-ROM drive. Click **OK** and follow all on-screen instructions.



After installing the ScanExpress A3 SP driver, iPhoto Plus and the on-line manual with Acrobat reader, the installation program of Textbridge starts. If you do not need OCR (Optical character recognition) software you can finish the installation without Textbridge. **Later, you may install the Textbridge by referring to the following.**

6

Installation of Textbridge for Win 3.1x and Win 95

NOTE: OCR software is not needed for scanning pictures and pages with graphics.

1. Start windows and run the file **setup.exe** in the Textbridge folder from the CD-ROM drive. Please select the correct directory for your system.
For Win 3.1x, \tbcl9631\UK\setup.exe , or
For win 95, \tbcl9695\UK\setup.exe
2. For using Textbridge with a scanner you should select **Full** installation (software and scanner). Follow all on-screen instructions.
3. Select the required language packs (Dictionaries).



When prompted by Textbridge to select a Scanner driver, select TWAIN, in order to use this product. When prompted to select a **TWAIN** driver, select your scanner model from the list and click **Select**.

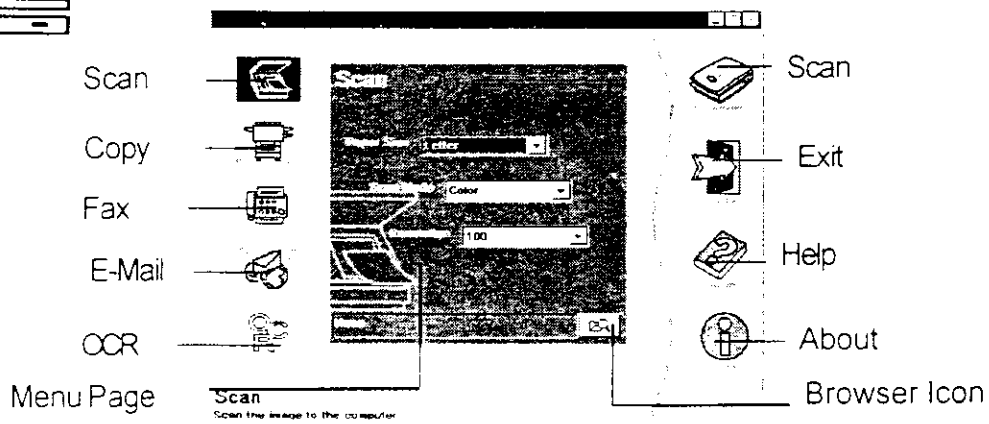
4. Please make sure that the TWAIN driver is set to Linear (Black & White) mode when you perform a test scan with Textbridge (**NOTE:** OCR Software can not operate in Colour or Grey mode).
5. After the test scan in Textbridge, you can exit the installation.

7 The Scan Dialog Box – Windows 95/NT

To access the Scan Dialog Box:



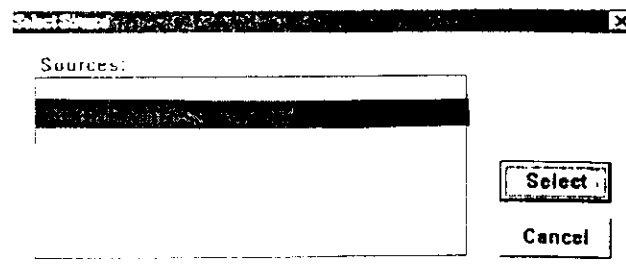
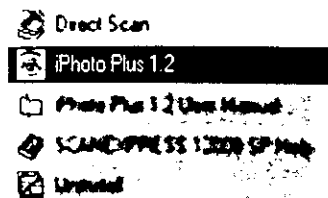
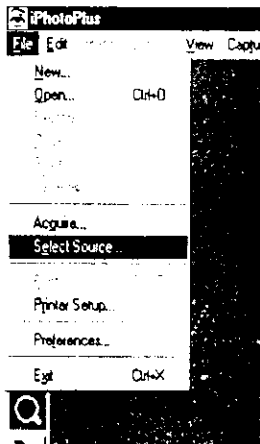
The Direct Scan Icon: Simply double click the left Mouse Button on the Direct Scan icon that is located in your Windows notification bar.



The Scan dialog box allows you to perform several functions using your scanner. Simply select the function that you wish to use by clicking on the appropriate icon, and the corresponding menu page will appear.

8 Scanning with iPhotoPlus

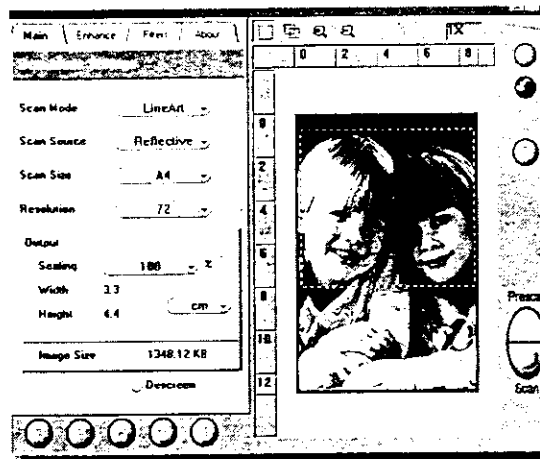
1. Locate IPhoto in the Windows Start Menu under the address Programs/ScanExpress A3 SP. Open it.
2. Click on the **File** Menu and select the **Select Source** entry. This brings up the Select source Window.
3. Select your type of scanner and press the **Select** button.



After this return to the **File** menu and select **Acquire**. This will bring up the Scanner setup (TWAIN driver). Now you can operate with the scanner as described in the *Scanning an Image* section in this manual.

- Place your picture on the scanner.
- Select the scan mode to preview the image in color, in grayscale, or in line art.

• Define the resolution to any setting. Now, click to scan. The scanned picture appears on your screen after a successful scanning completed. Close or leave iPhoto (Menu: **File / Exit**).



9

Scanning Text

Only one OCR software is required for text scanning. Follow the following steps if you are using Textbridge OCR for Windows 95/NT. Please make sure that the *Instant Access OCR* application of Textbridge is running.

- Activate your word processing software, e.g. MS WinWord, and click on the "**File**" menu to select "**Textbridge OCR**".
- Click on "**Go**".
- Set the scan mode to "**Line Art**".
- Click "**Scan**".

The scanned text will appear in the wordprocessing software.

Note: OCR software cannot scan in Color or Graymode.

10

Maintenance

When you do not use the scanner for a long time, you should unplug the power adapter from the wall socket.

It is recommended to keep the scan window glass and the document cover clean. They should be cleaned on a regular basis.

1. Turn off the scanner and unplug the power cord.
2. Open the document cover and use a slightly damp (with a little alcohol) cloth to clean the scan window glass and the cover separately.
3. Use a dry, lint-free cloth to dry the glass and cover.

11

Trouble Shooting

Note: It is not possible to print and scan at the same time. Do not disassemble the device to fix problems by yourself!

Q1. The computer fails to recognize the scanner.

1. Check if the scanner is correctly connected to the computer.

> *Make sure that there is a solid cable connection. Turn off your computer and the scanner, and reconnect them by carefully following our instructions in hardware setup.*

Q2. After powering up the scanner, it does not work any further.

1. The AC power outlet may be bad.

> *Connect the power cord to another power outlet.*

2. The power cable is not connected correctly to the outlet.

> *Plug the power cable correctly again.*

3. If you still have difficulty, the computer or the power supply may be defective.

> *Ask your dealer for assistance.*

Q3. The scan command is not executed.

1. The scanner cable may be loosely connected.

> *Ensure a solid connection. If this problem persists, contact your dealer.*

Q4. During scanning, the scanner makes a lot of noise while moving along the sub-scanning rail shafts.

1. The surface of the rail shafts is dirty.

> *Ask your dealer to clean them for you.*

Q5. The scanned picture is not clear.

1. The scan window glass is not clean.

> *If the outside surface is dirty, please refer to our maintenance instruction to clean it. If the inside is dirty, please call your dealer to clean it.*

Q6. What is the advantage of 30 Bit scanning?

> Higher colour mode yields a higher possibility of more unique colours from the scanned image. For example, 30-bit has the possibility of over 1 Billion unique colours. Current video card technology mostly only allows your system to display 24-bit colour images and the human eye is not capable of differentiating between all the colours. Therefore, 24-bit output is the good and practical margin for receiving efficient colours. The major benefit to have higher internal colour mode is to increase the higher colour accuracy in outputting unique colours from higher numbers of unique colours scanned by CCD internally. The scanner engine analyse the colours and determines which of the unique colours are the best choice and sends 24-bits of colour information, per pixel, back to the computer.

Q7. Why can I scan with OCR (optical character recognition) software only in Lineart (Black & White).

> OCR software is prepared for a special task. The job is to recognise the scanned character and transfer this in a Text Processing software. To get best results with this kind of software the OCR engine has to optimised for the required scan modes and documents. In reason that most Text documents are in black & white OCR software is optimised for this mode.

Maintenance

When you do not use the scanner for a longer time, you should unplug the power adapter from the wall socket.

It is recommended to keep the scan window glass and the document cover clean. They should be cleaned on regular basis. The cleaning steps:

1. Turn off the scanner and unplug the power cord.
2. Open the document cover and use a slightly dampened cloth with little alcohol to clean the scan window glass and the cover separately
3. Use a lint-free dry cloth to dry the glass and cover

Appendix A: Specifications*

Scanner Type	Flatbed
Scan Modes	
True Color: 36bits (internal),	68.7 billion colors
24bits (external),	16.7 million colors
Gray Mode: 12bits (internal),	4096 shades of gray
8 bits (external),	256 shades of gray
Text/Line Art:	1 bit/pixel (2 levels)
Scan Method	1 Pass Scanning
Scan Area	297 x 431 mm 11.7" x 17"
Resolution	Optical: 300 dpi (H) x 600 dpi (V)
	Maximum: 9600 dpi x 9600 dpi
	(through software interpolation)
Resolution Control	~100 - 9600 dots per inch (dpi) (controlled by software)
Scanning Data Buffer	128 KB (maximum)
Gamma Correction	Downloadable by software
Brightness Control	255 adjustable steps (software controlled)
Contrast Control	255 adjustable steps (software controlled)
Interface	SCCI
Light Source	Cold Cathode lamp
Dimensions	563 mm x 384 mm x 86.5 mm (L x W x H) 22.1" x 15.1" x 3.4" (L x W x H)
Weight	4.6 kg (10.1lbs.)
Voltage Requirements	100 Vac ~ 250 Vac, 47 ~ 63 Hz
Power Consumption	Linear Adapter 1.0 A, 15 V
Operating Temperature	10 to 40 degrees Centigrade (50 to 104 degrees Fahrenheit)
Operating Humidity	35% to 80% RH, noncondensing
Storage Temperature	-10 to 60 degrees Centigrade (14 to 140 degrees Fahrenheit)
Storage Humidity	20% to 80% RH, noncondensing

*Product specification are subject to change without notice.