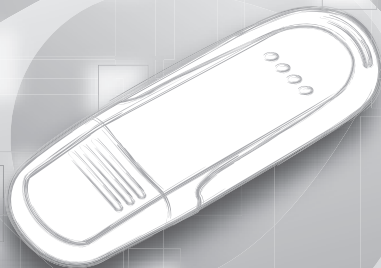


Bluetooth

Dongle



Quick Guide

EN DE FR IT ES NL PT SW DK TU PL GR RU FI TG

Model No.: MBT-D120
FCC ID: HWF-MBTD120

This device complies with part 15 of the FCC rules. Operation is subject to the following two conditions:

- (1) This device may not cause harmful interference.
- (2) This device must accept any interference received, including interference that may cause undesired operation.

Any changes or modifications not expressly approved by the party responsible for compliance could void the authority to operate equipment.

CE0678

FC Tested To Comply With FCC Standards
FOR HOME OR OFFICE USE



Introduction



Thank you for purchasing the Bluetooth USB Dongle! This device allows for wireless communication between your computer and other Bluetooth enabled devices.

Quick Guide

Please thoroughly read this guide in order to properly install the Dongle and device drivers.

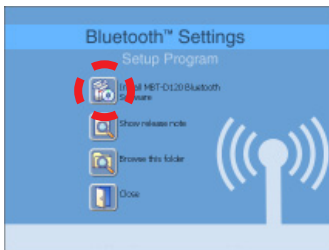
Note: Please 'pair' the Dongle and Bluetooth device in order to enable proper communication.

Before using the USB Dongle, please follow the steps below to install the bundled CD driver.

1. Insert the installer CD into your CD-ROM drive.
2. Close the CD-ROM drive.
3. After the CD menu appears, double-click “ **Setup.exe**” icon to start the installation.
4. An installer wizard will automatically launch, then click “ **Install**” button to continue. *(Please refer to Figure 1)*

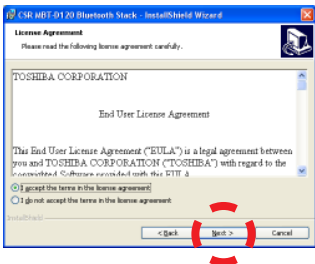
Note: To manually launch the installer wizard, follow the steps below:

- 1) Click “Start” in the Windows Taskbar, then select “Run”.
- 2) Click “Browse” and select “ Setup.exe”.
- 3) Click “Open”, then confirm it.



(Figure 1)

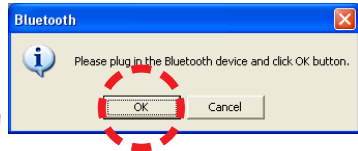
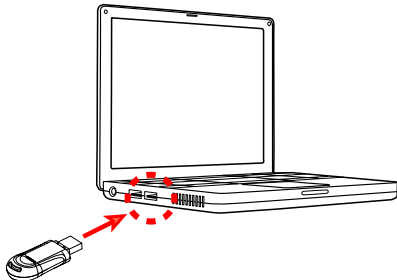
5. Mark “I accept” item in “License Agreement” window, then click “**Next**” button to continue. *(Please refer to Figure 2)*



(Figure 2)

Note: Please follow the screens to complete installation.

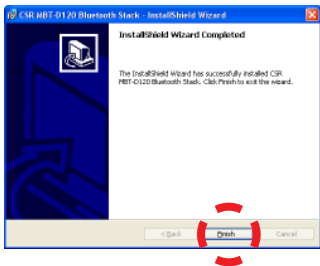
6. Please plug in the USB Dongle to a free USB port when prompted to do so and click “OK” button. (Please refer to Figure 3)



(Figure 3)

7. It will take several minutes to execute installation. Once a “Found New Hardware Wizard” window appears, click

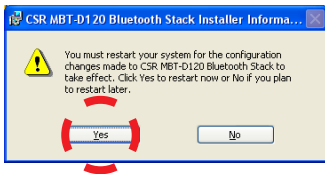
“Finish” button to complete installation. *(Please refer to Figure 4)*




(Figure 4)

- Please reboot your computer after the installation is complete.

(Please refer to Figure 5)



(Figure 5)

- The icon “” will display on the Windows taskbar. Then, you can start to use the Bluetooth Dongle.