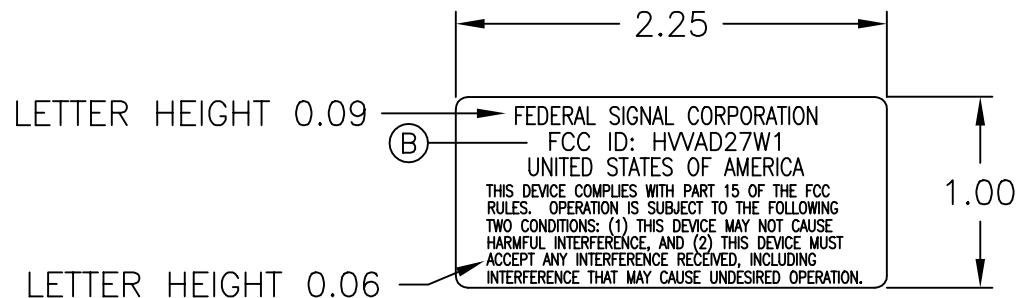


DRAWING NUMBER
1612417B



This drawing prepared
in accordance with
ANSI Y14.5M-1982

Tolerances Unless Otherwise Specified	
Angles	±0.5°
x.xx	±.015
x.xxx	±.005



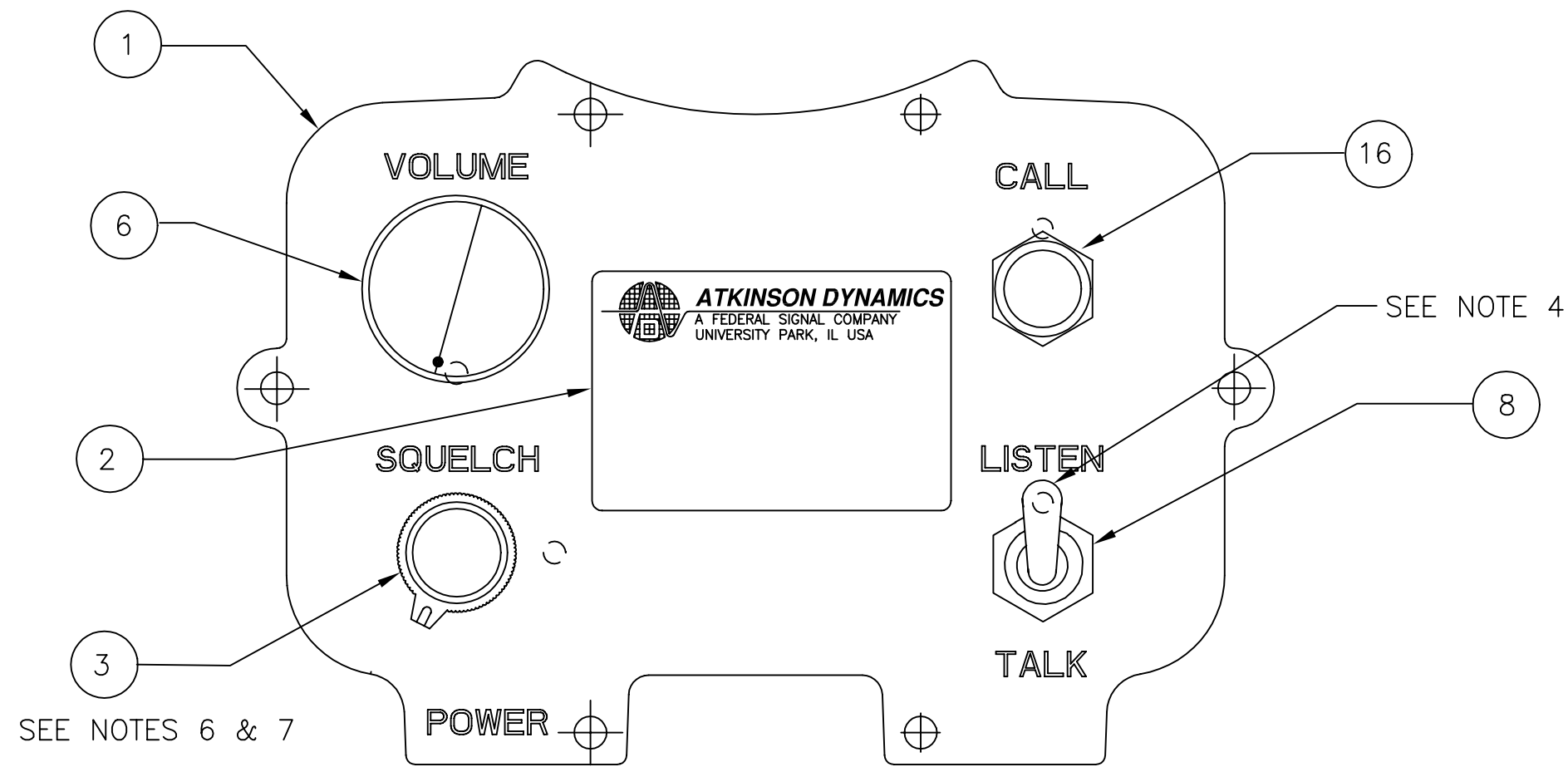
**SIGNAL
DIVISION**

Federal Signal Corporation

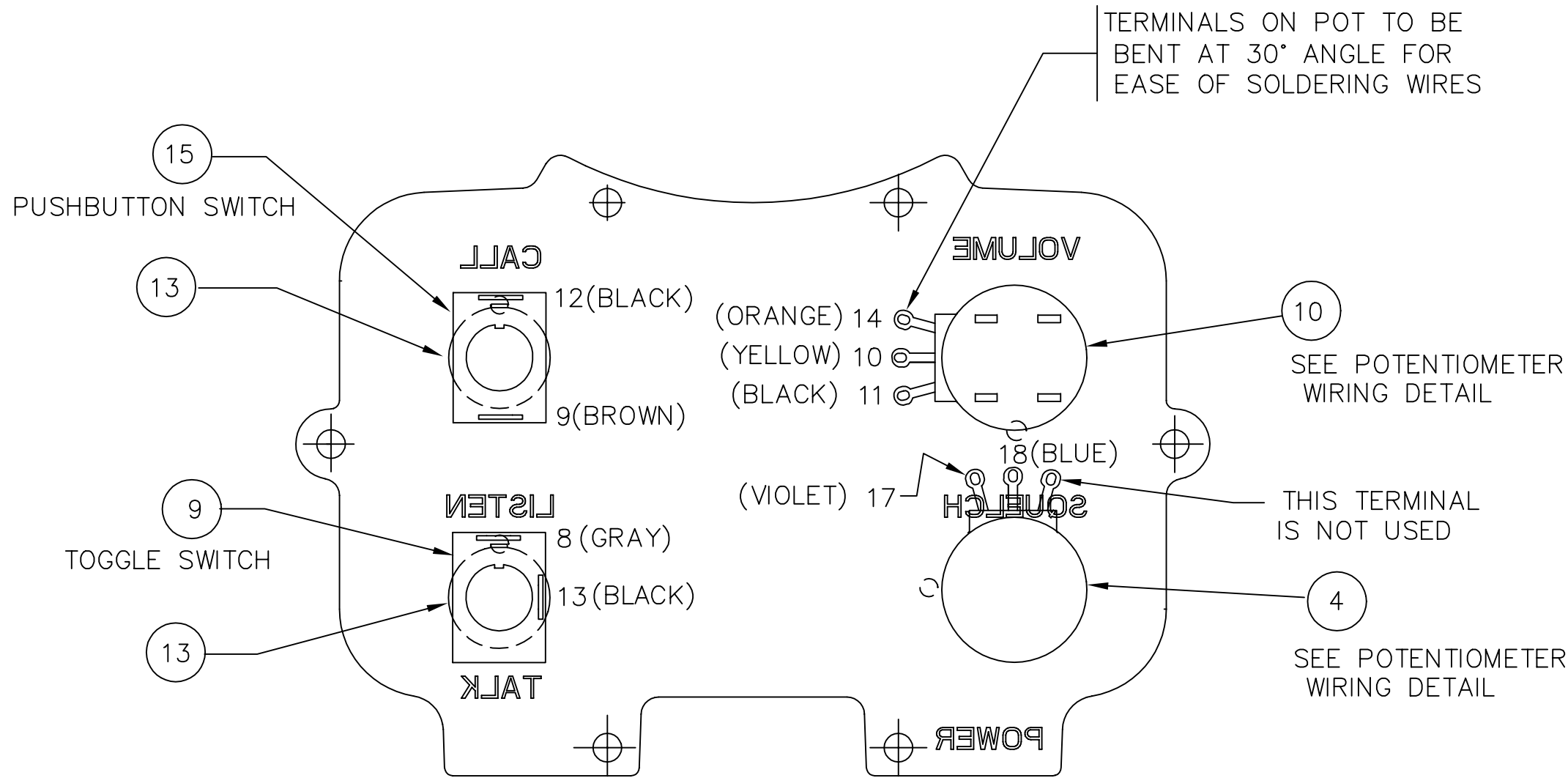
2645 FEDERAL SIGNAL DRIVE - UNIVERSITY PARK, IL 60466

				FINISH	MATERIAL DESCRIBED AND INFORMATION CONVEYED IS PROPRIETARY TO FEDERAL SIGNAL CORPORATION, IS OR MAY BE THE SUBJECT OF PATENT APPLICATIONS, AND MAY NOT BE COPIED, DIVULGED TO OTHERS, OR USED FOR MANUFACTURING WITHOUT CONSENT.		
				SILVER MYLAR (BLACK LETTERING) REMOVE BURRS, SHARP CORNERS AND EDGES			
				MATERIAL	1611396A	UNIT OF MEASURE	PC
				NAME	LABEL, FCC, WIRELESS ATKINSON DYNAMICS		DRAWING NUMBER
B	REL. TO PROD. ECO #04-TBD	TBD	BWH				
A	REL. TO PROD. ECO #02-5178	8-12-02	BWH				
REV.	CHANGE	DATE	BY				

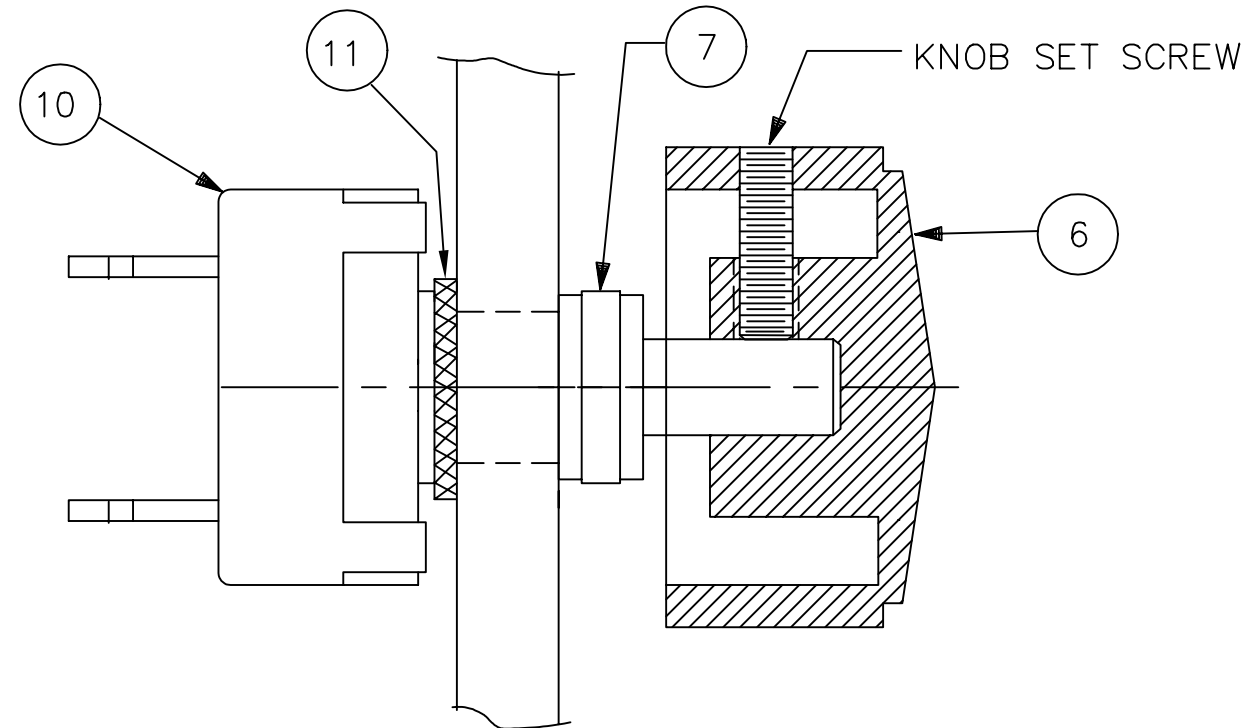
1612417B



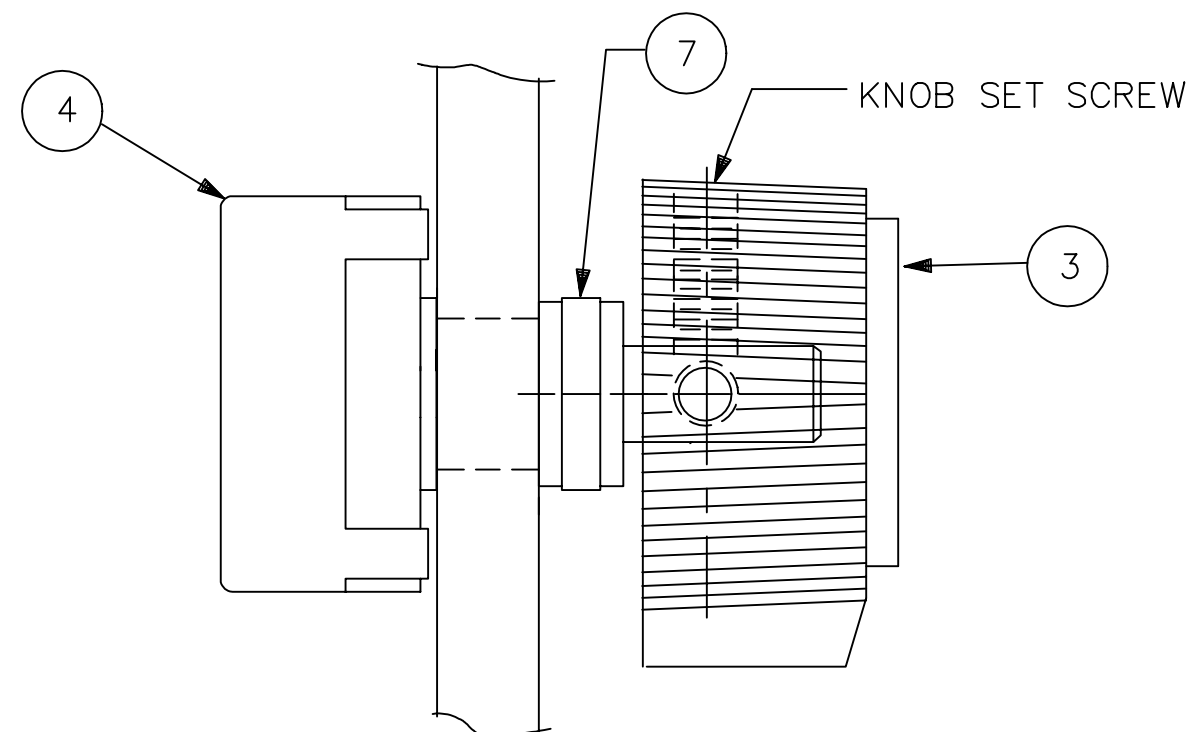
FRONT



BACK



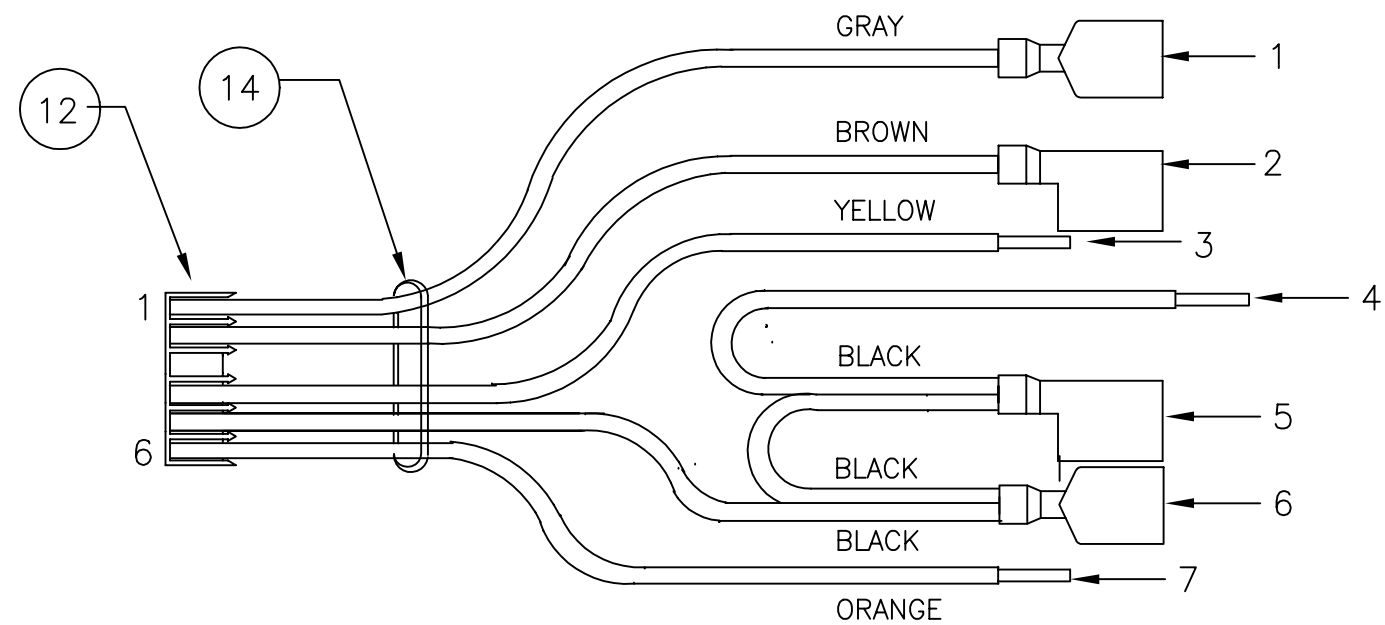
POTENTIOMETER DETAIL
VOLUME CONTROL



POTENTIOMETER DETAIL
SQUELCH

ITEM	AD-27AW 120V	PART NO.	DESCRIPTION
1	1	8590252	COVER,HOUSING,MACHINED
2	1	81461822-02	NAMEPLATE,AD-27AW
3	1	141133	KNOB
4	1	106126	POTENTIOMETER,1K OHM
5	1	1751095	WIRING HARNESS,SQUELCH CONTROL
6	1	141A129	KNOB
7	2	288A542	BOOT,POTENTIOMETER
8	1	288801	BOOT,TOGGLE
9	1	122A298	SWITCH,TOGGLE,SPST
10	1	106125	POTENTIOMETER,WITH ON/OFF SWITCH
11	1	7075A032	LOCKWASHER,INT TTH,3/8
12	1	1751012	WIRING HARNESS ASSEMBLY
13	2	288A543	RING,SWITCH LOCKING
14	1	150A109	TIE WRAP
15	1	122A299	SWITCH,PUSHBUTTON
16	1	288697	BOOT,PUSHBUTTON

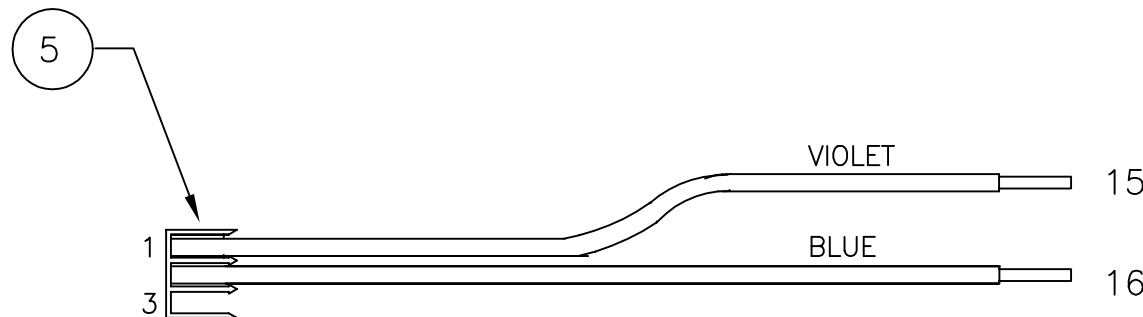
(A)



WIRING HARNESS DETAIL

WIRING HARNESS ASSEMBLY CHART

POINT	TO	POINT	COLOR
1		8	GRAY
2		9	BROWN
3		10	YELLOW
4		11	BLACK
5		12	BLACK
6		13	BLACK
7		14	ORANGE



WIRING HARNESS DETAIL
SQUELCH POTENTIOMETER

WIRING HARNESS ASSEMBLY CHART

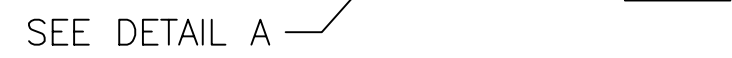
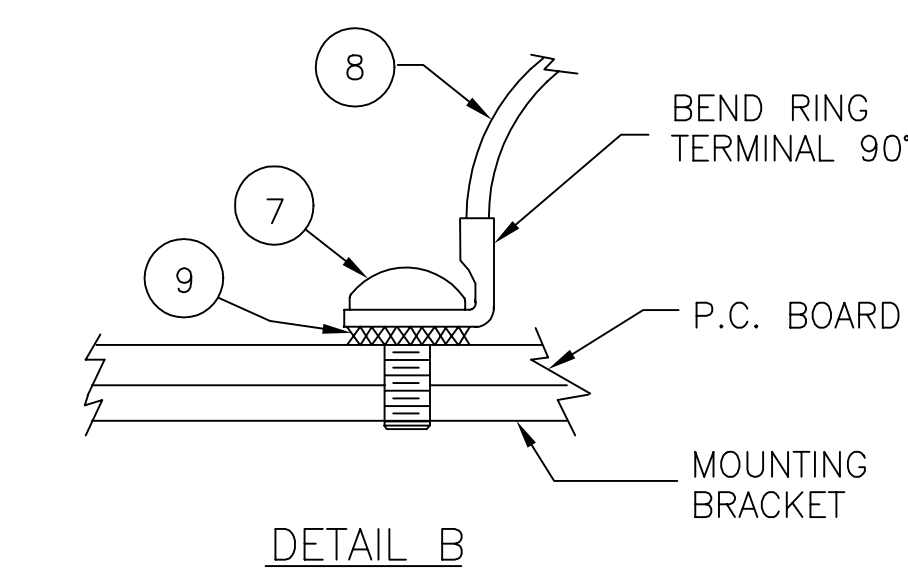
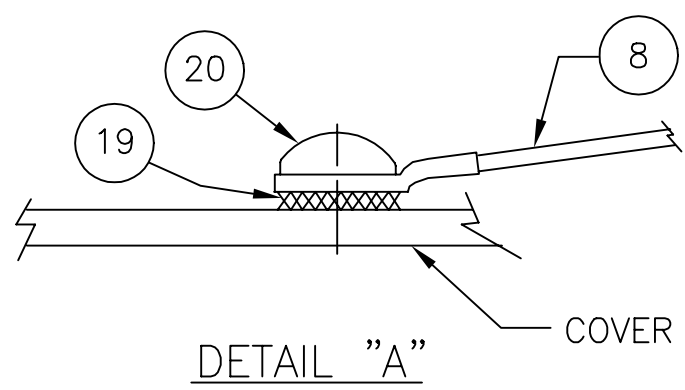
POINT	TO	POINT	COLOR
15		17	VIOLET
16		18	BLUE

NOTES

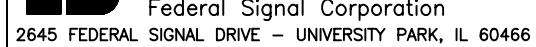
- VOLUME POTENTIOMETER TO BE TURNED FULLY COUNTER-CLOCKWISE TO "OFF" POSITION BEFORE ASSEMBLING KNOB. VOLUME KNOB IS SECURED TO SHAFT WITH INDICATOR IN POSITION SHOWN WITH (2) 5/64" DIA. SET SCREWS.
- RUBBER BOOTS SHOULD BE TIGHTENED SO THEY SNUG UP COMPLETELY AGAINST COVER PLATE. TORQUE SPECIFICATION 10 TO 15 IN-LBS.
- SWITCHES SHOULD BE LINED UP AS SHOWN ON BACK DETAIL WITH LOCKING RINGS.
- TOGGLE SWITCH TO BE FACTORY SET WITH THE TOGGLE IN THE LISTEN POSITION.
- TIE WRAP TO BE PLACED ON WIRING HARNESS TO DRESS WIRES.
- SQUELCH KNOB TO BE SET IN POSITION SHOWN IN "FRONT" DETAIL.
- AFTER FINAL ASSEMBLY TEST IS COMPLETE, SET SQUELCH KNOB TO MID-POSITION.

				Tolerances Unless Otherwise Specified Angles ----- ±0.5° x.xx ----- ±.015 x.xxx ----- ±.005				SIGNAL DIVISION Federal Signal Corporation 2645 FEDERAL SIGNAL DRIVE - UNIVERSITY PARK, IL 60466			
				FINISH REMOVE BURRS, SHARP CORNERS AND EDGES				MATERIAL DESCRIBED AND INFORMATION CONVEYED IS PROPRIETARY TO FEDERAL SIGNAL CORPORATION, IS OR MAY BE THE SUBJECT OF PATENT APPLICATIONS, AND MAY NOT BE COPIED, DIVULGED TO OTHERS, OR USED FOR MANUFACTURING WITHOUT CONSENT.			
				MATERIAL SEE ABOVE				DRAWN BY BWH CHKD. BY P.M. SCALE AT D SIZE: FULL			
				NAME COVER ASSEMBLY, AD-27AW				DATE 10-22-01 DATE 10-22-01 DO NOT SCALE DRAWING			
				REV. CHANGE				DRAWING NUMBER 8590256A-SHT.1			

This drawing prepared in accordance with ANSI Y14.5M-1982



Tolerances Unless Otherwise Specified		
Angles	-----	±0
x.xx	-----	±.0
x.xxx	-----	±.0



DRAWN BY BWH	CHKD. BY P.M.	SCALE AT D SIZE
DATE 10-22-01	DATE 10-22-01	FULL DO NOT SCALE DRAWING

MATERIAL DESCRIBED AND INFORMATION CONVEYED IS PROPRIETARY TO FEDERAL SIGNAL CORPORATION, IS OR MAY BE THE SUBJECT OF PATENT APPLICATIONS, AND MAY NOT BE COPIED, DIVULGED TO OTHERS, OR USED FOR MANUFACTURING WITHOUT CONSENT.		
OF SURE	DRAWN BY BWH	CHKD. BY P.M.
F	DATE 10-22-01	DATE 10-22-01
		SCALE AT D SIZE FULL
	DRAWING NUMBER	DO NOT SCALE DRAWING
8590256A-SHT.2		