

TROUBLESHOOTING

If you are having trouble, Wacom recommends you do the following:

1. If the tablet driver failed to load properly, first perform the recommended action in any error message that may appear on your screen. If that does not solve the problem, review the troubleshooting procedures in this chapter.
2. Look in the [troubleshooting tables](#). Your problem may be described there and you can try the solution offered.
3. Open the Wacom tablet Read Me file and look for any information updates.
4. Visit www.wacom.com and choose the Wacom web site for your region where you can check the product FAQs (Frequently Asked Questions).
5. If you are having a compatibility conflict between Intuos and a new hardware or software product, see [obtaining driver downloads](#) for information on downloading an updated software driver. Wacom periodically updates the software driver to maintain compatibility with new products.
6. Test your tablet and input tools. See [testing your tablet](#) and [testing controls and input tools](#).
7. If you have tried the suggestions in this manual and still cannot resolve the problem, then contact Wacom for Technical Support. See [technical support options](#) and the Read Me file for information on where to obtain support for your region.

[Testing your tablet](#)

[Testing controls and input tools](#)

[Troubleshooting tables](#)

[Technical support options](#)

[Obtaining driver downloads](#)



TESTING YOUR TABLET

1. Turn on your computer and wait until the system has fully loaded.
2. Check the USB connection. A tablet status LED should glow whenever the tablet is properly connected and your computer has registered it as a USB device. If not:
 - Make sure the tablet USB cable is securely connected to an active USB port on your computer.
 - Check the tablet USB cable for damage.
 - If you are connecting the tablet to a USB hub (or hub device such as a keyboard with USB ports), be sure the USB hub is properly connected to your computer and is active.
 - If a status LED does not illuminate after your computer is on and has finished booting up, your USB port may be disabled. Verify that you have connected the tablet to an active USB port.
 - Connect the tablet to a different USB port or try connecting to the USB port on another computer.
 - For best results when troubleshooting no power to the tablet (a status LED does not light), plug the tablet directly into the system USB port located on your computer. Temporarily eliminate any external hubs in use until you determine that the system recognizes the tablet and that it is functional. When the tablet is working properly, it is usually okay to then move the tablet to a USB hub.
3. For [wireless operation](#), check the tablet connection. A tablet status LED should glow whenever the tablet is properly connected and your computer has registered it as a USB device. If not:
 - Verify that the wireless module is on. See [battery and wireless connection status](#).
 - Verify that the wireless module and receiver are properly installed. See [wireless setup](#).
 - Check the battery power. See [battery and wireless connection status](#). If the battery charge is low, connect the USB cable and charge the battery. See [charging the battery](#).
 - Switch the wireless module off, and then back on.
 - Move the tablet closer to the computer. Make sure there are no metal or other high density obstructions in the line of sight between the tablet and computer.





4. [Check pen input](#). If the tablet driver does not load properly, pen input will not be available. (You will be able to use the pen tip to move the screen cursor and click, but there will be no other pen functionality.) Install the tablet driver software.
 - Move your pen across the tablet active area. The screen cursor should move in the corresponding direction on your monitor or display screen.
 - Press the pen tip against the surface of the tablet. A status LED should brighten.
 - Next, without applying pressure to the pen tip, hold the pen tip within approximately 10 mm (0.4 inch) of the tablet surface and press the side switch. The LED should again brighten.
 - Turn the pen over and press the eraser against the surface of the tablet. The LED should brighten.See also [testing controls and input tools](#) and [testing a pen](#).
5. [Check touch input](#). Attempt to move the screen cursor by tracking your finger across the tablet surface. Then tap to select an item. The status LED should brighten when you touch the active area of the tablet. See also [testing touch](#).

If the tablet driver does not load properly, basic touch movement will be recognized but other actions and gestures will not. If gestures are not recognized, install the tablet driver software.
6. Check the ExpressKeys. See [testing controls and input tools](#) and [testing the ExpressKeys](#).
7. Check the Touch Ring. See [testing controls and input tools](#) and [testing the Touch Ring](#).
8. Check any other tool(s), such as the optional Intuos Mouse. See [testing controls and input tools](#).

If any of these tests fail, you may have defective hardware. See [technical support options](#).

After testing, use the Wacom Tablet control panel to reconfigure your tablet and tools for any custom settings you may originally have been using.

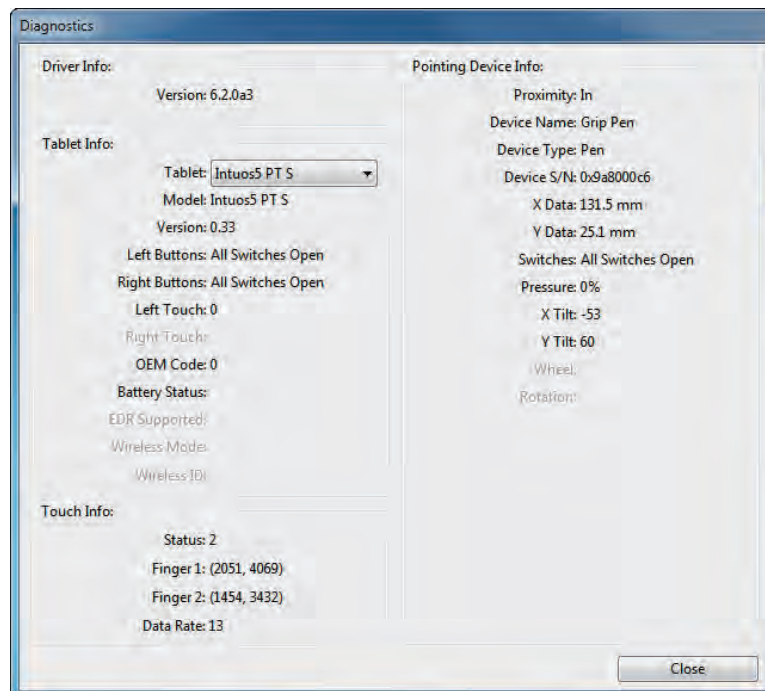


TESTING CONTROLS AND INPUT TOOLS

If your input tools or tablet controls do not work as you expect, it is a good idea to first check the assigned functions or reset them to their default conditions. You will also want to do this if you have a touch-sensitive tablet model and encounter problems with touch.

A quick way to return a tool to its default condition is to remove it from the control panel TOOL list. Do this by selecting the tool and clicking on the TOOL list [-] button. After the tool has been removed, place it back onto the tablet surface. The tool will be added back to the TOOL list with its default settings.

- Open the Wacom Tablet control panel and click on the ABOUT button. In the dialog box that appears, click DIAGNOSE.... The DIAGNOSTICS dialog box shows dynamic information about the tablet, your input tool(s), and appropriate information for touch-sensitive tablets.



- If more than one tablet is connected to your system, in the TABLET INFO column select the unit for which you are testing.
- Use the information shown in the DIAGNOSTICS dialog box when testing your tablet and input tools.

Note: If a tool button is set to RADIAL MENU or OPEN/RUN..., that function will occur when the button is pressed. In this case you may want to change the button function before testing.

[Testing the ExpressKeys](#)

[Testing the Touch Ring](#)

[Testing a pen](#)

[Testing touch](#)

[Testing the mouse](#)

TESTING THE EXPRESSKEYS

1. With the DIAGNOSTICS dialog box open, observe the TABLET INFO column as you test each ExpressKey. Be sure to select the tablet unit you are testing from the TABLET INFO column.
2. Test the keys by pressing them one at a time. Each time you press a key, its number is shown next to the LEFT BUTTONS category.
3. When you are done, click the CLOSE button to exit the dialog box.

Important: Some applications can override and control the ExpressKey functions. Consider closing any open applications except the Wacom Tablet control panel when testing the ExpressKeys. For details, see [using applications integrated for tablet control](#).

TESTING THE TOUCH RING

1. With the DIAGNOSTICS dialog box open, observe the TABLET INFO column as you test the Touch Ring. Be sure to select the tablet unit you are testing from the TABLET INFO column.
2. Slide your finger around the entire circumference of the Touch Ring. As you touch and move your finger along the Touch Ring, a LEFT TOUCH number will indicate your current finger position on the Touch Ring.
3. Press the Touch Ring toggle button to toggle between the four customizable modes. As you cycle between settings, a corresponding LED should illuminate. Within the DIAGNOSTICS dialog box, the button mode is also shown as LEFT BUTTONS.

If any of the functions are set to SKIP, the corresponding LED will be skipped in the toggle sequence.

4. When you are done, click on the CLOSE button to exit the dialog box.

Important: Some applications can override and control the Touch Ring functions. Consider closing any open applications except the Wacom Tablet control panel when testing the Touch Ring. For details, see [using applications integrated for tablet control](#).

TESTING A PEN



1. With the **DIAGNOSTICS** dialog box open, and while observing the **POINTING DEVICE INFO** column, bring your Intuos tool within 10 mm (0.4 inch) of the tablet active area. A value for **PROXIMITY**, the **DEVICE NAME**, **DEVICE TYPE**, and a **DEVICE S/N** (serial number) should be displayed. If you have more than one tablet connected to your system, be sure you have selected the **TABLET** for which you are testing your tools from the **TABLET INFO** column.
2. Move your tool along the tablet surface. The **X** and **Y DATA** values should change to reflect the tool position.
3. Test your pen switches. A tablet status LED should brighten each time you click with the tool tip, press the side switch, or press the tool eraser to the tablet.
 - Click on the tablet surface with the tool tip. The **SWITCHES** state and **PRESSURE** value should change. **PRESSURE** should change from approximately 0% with no pressure applied to approximately 100% when full pressure is applied.
 - Next, press the side switch without pressing the tip to the tablet. The **SWITCHES** state should change. For the Intuos pen, do this for both positions of the side switch.

Pen	Tip = 1
SWITCHES states	Side switch (lower position) = 2 Side switch (upper position) = 3 Eraser = 1
Airbrush	Tip = 1
SWITCHES states	Side switch = 2 Eraser = 1

 - Press the eraser to the tablet. The **SWITCHES** state and **PRESSURE** value should change. **PRESSURE** should change from approximately 0% with no pressure applied to approximately 100% when full pressure is applied.
 - For the optional Airbrush, move the fingerwheel forward. The **WHEEL** value should decrease to a value of approximately 0 when the fingerwheel is all the way forward. Move the fingerwheel backward. The **WHEEL** value should increase to approximately 1000 when the fingerwheel is all the way back.
4. Test tilt for the x-axis by moving the pen from a vertical position toward the right; the **X TILT** value should change from approximately 0 to +60. Now move the tool to the left of vertical; the **X TILT** value should change from approximately 0 to -60.
5. Test tilt for the y-axis by moving the pen from a vertical position toward the bottom of the tablet; the **Y TILT** value should change from approximately 0 to +60. Now move the tool toward the top of the tablet; the **Y TILT** value should change from approximately 0 to -60.
6. For the optional Art Pen, test the rotation feature by placing the pen tip on the tablet surface and slowly rotating the pen on its axis. The **ROTATION** value should change as you rotate the pen.
7. When you are done, click on the **CLOSE** button to exit the dialog box.

TROUBLESHOOTING TABLES

If you encounter problems with your Intuos tools or tablet, see the following tables. Your problem may be described here, and you can try the solution offered. Check the tablet Read Me file for the latest information updates.

For additional information, visit the Wacom web site at <http://www.wacom.com> .

[General problems](#)

[Pen problems](#)

[Touch problems](#)

[Wireless connection problems](#)

[Windows-specific problems](#)

[Mac-specific problems](#)

GENERAL PROBLEMS

The computer does not have an available USB port.	Check if there is an available USB port on a USB hub. If not available you will need to add a USB hub or USB card.
The tablet status LEDs do not illuminate.	Verify that the tablet USB cable is properly connected to the tablet and to an active USB port. If connecting to a USB hub device, make sure the hub is connected to an active USB port and that the hub is active. Try also connecting to another USB port or using another USB cable. If using Intuos in wireless mode, see also wireless connection problems .
The computer does not go to sleep.	When you are not using your Intuos input tool(s), remove them from the tablet surface or the tablet will continue to send data, keeping the computer awake. Note: Because some metallic or other conducting objects can also cause the tablet to send data, it is best to keep the tablet surface clear of all objects when not in use.
The screen cursor is very erratic or “jumps” around when using the tablet.	On rare occasions the tablet may receive interfering radio frequencies from a computer monitor or nearby AM radio station. If you notice interference from a monitor, try moving the tablet at least six (6) inches away from the monitor, or change the monitor refresh rate or monitor resolution.



The tablet is set to EXPRESSKEYS RIGHT (or EXPRESSKEYS LEFT), but at the log on screen the tablet seems to work upside down.

Reinstall the tablet driver software and change the default orientation of the tablet. See [configuring the tablet orientation](#).

When working in some applications, the ExpressKeys or Touch Ring perform a different function than what is set in the Wacom Tablet control panel.

Some applications can override and control the ExpressKey and Touch Ring functions. See [using applications integrated for tablet control](#).

If using application-specific settings, be sure you have updated the settings for the application you are working with.

PEN PROBLEMS



The pen does not position the screen cursor, or otherwise work properly.

If the tablet driver does not load properly, pen input will not be available.

- You will be able to use the pen tip to move the screen cursor and click, but there will be no other pen functionality.
- For tablet models that combine pen input and touch, basic touch movement will continue to be recognized but other actions and gestures will not.

Install the driver software for the tablet.

The pen does not draw or ink with pressure sensitivity.

Some applications require that you turn on the pressure capabilities within the application or the selected tool before the pen will respond as a pressure-sensitive tool.

Verify also that your application supports pressure sensitivity.

Clicking is difficult.

Try using a lighter TIP FEEL. See [adjusting tip feel and double-click](#).

Double-clicking is difficult.

Be sure you are quickly tapping the tablet twice in the same place on the tablet active area. Wacom recommends using the side switch to double-click.

Open the Wacom Tablet control panel and go to the PEN tab.

Try increasing the TIP DOUBLE CLICK DISTANCE or using a lighter TIP FEEL.

Set an ExpressKey to DOUBLE CLICK and use it to issue double-clicks.

Windows: Try setting your system to launch programs with a single click. See [clicking](#).



The pen selects everything, will not stop drawing.

Open the Wacom Tablet control panel and go to the PEN tab. Move the TIP FEEL slider toward FIRM, or select CUSTOMIZE... and increase the CLICK: THRESHOLD setting. If this does not help, see [testing controls and input tools](#).

The pen nib may be worn. See [replacing the pen nib](#).

The eraser selects everything or will not stop erasing.

Open the Wacom Tablet control panel and go to the ERASER tab. Move the ERASER FEEL slider toward FIRM, or select CUSTOMIZE... and increase the CLICK: THRESHOLD setting. If this does not help, see [testing controls and input tools](#).

You notice a screen delay at the beginning of pen or inking strokes.

Open the Wacom Tablet control panel and go to the PEN tab. Try decreasing the TIP DOUBLE CLICK DISTANCE. If that does not work, move the TIP DOUBLE CLICK DISTANCE slider to the OFF position in order to turn off double-click assist.

Try turning off the operating system inking features.

You have to press hard with the pen when clicking, drawing, or writing.

Open the Wacom Tablet control panel and go to the PEN tab. Move the TIP FEEL slider toward SOFT, or select CUSTOMIZE... and decrease the SENSITIVITY and CLICK: THRESHOLD settings.

The pen tip does not function.

Be sure you are using only a compatible pen or Wacom input device, such as the pen that shipped with your product, or a Wacom accessory pen specified for use with Intuos5. Other pens may not function properly on the tablet.

Check the control panel PEN tab and verify that a CLICK function is assigned to the tip.

A tablet status LED should brighten when the tip is pressed. If not, you may have defective hardware. See [testing controls and input tools](#).

Changing the settings of an input tool has no effect.

Make sure you are changing the settings for the tool and application that you are using. See [application-specific settings](#) and [working with multiple tools](#).



The pen side switch does not work.

Be sure you are using only a compatible pen or Wacom input device, such as the pen that shipped with Intuos5, or a Wacom accessory pen specified for use with Intuos5. Other pens may not function properly on the tablet.

Be sure to press the side switch when the pen tip is within 10 mm (0.4 inch) of the tablet active area. Do this without pressing down on the pen tip.

In the Wacom Tablet control panel, verify that the side switch is set to the function you are expecting to occur for the application and tool you are using.

Check also the SIDE SWITCH MODE. If CLICK & TAP is selected, you will need to first press the side switch while touching the pen tip to the tablet surface in order to perform a click function. See [advanced options](#).

A tablet status LED should brighten when you press the side switch. If not, you may have defective hardware. See [testing your tablet](#).

The screen cursor “jumps” back.

Do not place an Intuos tool on the tablet when it is not in use, or when you are using another pointing device. Leaving your tool on the tablet may interfere with screen cursor positioning when using other input devices.

Cannot move the cursor where you want to on the screen, or the line you are drawing does not line up with the location of the pointer in paint applications.

Open the Wacom Tablet control panel and go to the MAPPING tab. Verify that PEN MODE is selected and that the SCREEN AREA is set to FULL for the selected tool and application. If this does not help, click on the DEFAULT button to reestablish tablet to screen mapping. If you are still having difficulty, remove the tablet preferences (see [Windows-specific problems](#) or [Mac-specific problems](#)).

Confirm whether the pen does (or does not) function. See [testing controls and input tools](#).

When using the pen to operate the Touch Ring, the Touch Ring does not work well.

The Touch Ring is designed to be used with your finger, and does not work with the pen tip.

When using Intuos on a multiple monitor system, you cannot use the pen to control the other monitor(s).

Cycle pen control for Intuos between your displays by pressing an ExpressKey or pen button that is set to [DISPLAY TOGGLE](#).

Verify that the SCREEN AREA in the MAPPING tab is set to FULL.

You can also use your pen to control the other monitors in mouse mode. To use mouse mode, first set a pen button to MODE TOGGLE.... Then use the button to toggle between PEN MODE and MOUSE MODE.

TOUCH PROBLEMS



Touch does not work.

Enable touch by pressing an ExpressKey that is set to TOUCH ON/OFF. Otherwise, open the Wacom Tablet control panel, click on the TOUCH icon, and go to the STANDARD GESTURES, MY GESTURES, or TOUCH OPTIONS tab. Be sure the ENABLE TOUCH option is selected.

Touch does not seem to fully work. The screen cursor can be moved, but more complex actions or gestures do not work.

If the tablet driver does not load properly, basic touch movement will be recognized but other actions and gestures will not. Install the driver software for the tablet.

The tablet does not reliably recognize multi-finger touch.

If you hold your fingers too close together, the tablet may not recognize them as being separate. Try moving your fingers a little further apart.

Cannot zoom-in or zoom-out when working with Adobe Photoshop.

If zoom functions do not operate correctly within Photoshop, verify that the ZOOM WITH SCROLL WHEEL function is not selected within the Photoshop PREFERENCES options.

Scrolling and panning gestures do not function correctly when working with Adobe Photoshop.

If touch gestures do not operate correctly within Photoshop, verify that the ZOOM WITH SCROLL WHEEL function is not selected within the Photoshop PREFERENCES options.

Rotation gestures do not seem to work consistently, or not at all.

Rotation may work differently depending on the application you are working with. For example, rotation may work smoothly, in 90-degree increments, or not at all.

For best recognition of this gesture, start with your fingers positioned diagonally on the tablet surface and keep them at least 25 mm (1 inch) apart.

WIRELESS CONNECTION PROBLEMS

The computer does not have an available USB port.

Check if there is an available USB port on a USB hub. If not available, add a USB hub or USB card.

After pressing the power button on the wireless module, the tablet status LED glows steadily for 4 seconds and then turns off.

If a wireless connection is not established, the wireless module will turn off after 4 seconds.

- Make sure the wireless receiver is properly connected to an active USB port on your computer or USB hub.
- Move the tablet closer to the antenna and make sure there are no metal or other high-density obstructions in the line of sight between the tablet and your computer.

Again press the power button to activate the connection.

After turning on the wireless module, the status LED indicates good functionality but the screen cursor cannot be moved.

If your tablet model supports touch, be sure you have not turned off touch. See [disabling touch](#).

Be sure you are using the pen correctly. Review [using the Grip Pen](#).

Switch the wireless module off, then back on.

If the battery charge is low, try [charging the battery](#).

A wireless connection has been made, but the tablet does not seem to work correctly.

Be sure you have correctly installed the tablet driver software.

See also [optimizing the wireless connection](#).

The tablet works when connected with the USB cable, but turns off as soon as the cable is disconnected.

Confirm the wireless module and receiver are correctly installed, and that the wireless module is turned on.

Check the battery. See [battery and wireless connection status](#).

- Open the tablet wireless compartment cover and verify that the battery is properly installed.
- Check the battery appearance to ensure there is no leakage or other indication of damage.
- Charge the battery overnight and try again. If the problem persists, the battery may be completely discharged or damaged and can no longer hold a charge. You will have to purchase a replacement battery. See [ordering parts and accessories](#).





The tablet status LED does not illuminate after pressing the power button on the wireless module.

Try again. Then:

1. Verify the Wacom wireless receiver is properly connected to an active USB port. If connecting to a USB hub, make sure the hub is connected to an active USB port and that the hub is active.
2. Verify the Wacom wireless module is properly installed in the tablet. Press the power button to connect wirelessly.
3. If the tablet status LED still does not light, connect the USB cable between your tablet and computer.

On the wireless module, check the battery status LED. Amber indicates the battery is charging. Green indicates the battery is fully charged. If the LED remains off, the battery may be defective. Replace the battery.

4. If both the tablet status and wireless module LEDs remain off, then contact the Wacom support staff for the area where your product was purchased. See [technical support options](#).

When using the tablet, the screen cursor or pen strokes seem to lag or skip in some applications.

See [optimizing the wireless connection](#) for tips on improving the connection.

The battery charging process seems to stop whenever the computer enters sleep mode.

As required, adjust your system power or energy saver settings so that the computer does not enter sleep mode while the tablet battery is charging.





WINDOWS-SPECIFIC PROBLEMS

You suspect the tablet preferences may be corrupted, or want to make certain that all settings are at their factory defaults.

Use the Wacom Tablet Preference File Utility to work with preferences. Close any open applications. Click the START icon and select ALL PROGRAMS. Then select WACOM TABLET and WACOM TABLET PREFERENCE FILE UTILITY.

- It is a good idea to first back up your tablet preferences. In the TABLET PREFERENCE FILE UTILITY dialog box, click BACKUP... and follow the prompts.
- Then, use the Tablet Preference File Utility to delete the tablet preferences as follows:
 - Single user. Under MY PREFERENCES, click REMOVE to delete the preferences for the current user.
 - Multiple users. Under ALL USER PREFERENCES, click REMOVE to delete preferences for multiple users. Administrator rights are required to delete preferences for all users. Relaunch any currently open tablet-aware applications that you may be running.

You can quickly restore tablet preferences that have been backed up by clicking RESTORE... under MY PREFERENCES.





MAC-SPECIFIC PROBLEMS

At startup, a dialog box appears telling you that either the driver failed to load or the tablet preferences have not yet been created.

The tablet was not detected at startup.

If using a wireless connection:

- Make sure the wireless connection is active. See [battery and wireless connection status](#).
- From the GO menu, select UTILITIES and launch the SYSTEM PROFILER. Select USB from the HARDWARE section of the CONTENTS list. A Wacom USB tablet model should be listed. If a tablet model is not listed, check the wireless connection.

If connected with the provided USB cable:

- Make sure the USB cable is securely connected to an active USB port on your computer or USB hub. Check to be sure that a tablet status LED is illuminated. If your tablet is plugged into a USB hub, make sure the hub is connected and active.
- From the GO menu, select UTILITIES and launch the SYSTEM PROFILER. Select USB from the HARDWARE section of the CONTENTS list. A Wacom USB tablet model should be listed. If a tablet model is not listed, check the USB tablet cable connection or try plugging the tablet into a different USB port.

If you are still having difficulties, uninstall then reinstall the tablet driver software.

If this does not help, contact Wacom for Technical Support. See [technical support options](#).





You suspect the tablet preferences may be corrupted, or want to make certain that all settings are at their factory defaults.

Use the Wacom Tablet Utility to work with your preferences. Close any open applications. Open the main APPLICATIONS folder. Then open the WACOM TABLET folder and run the WACOM TABLET UTILITY.

- It is a good idea to first back up your tablet preferences. In the Wacom Tablet Utility, select CURRENT USER or ALL USERS. Then click BACKUP... and follow the prompts.

- Then, delete the tablet preferences as follows:

Single user. When the utility starts, select CURRENT USER and click REMOVE. Log out, then log back in. When the tablet driver loads it will create a new preferences file with the factory defaults.

Multiple users. When the utility starts, select ALL USERS and click REMOVE. Log out, then log back in. When the tablet driver loads it will create new preferences files with the factory defaults.

You can quickly restore tablet preferences that have been backed up for the CURRENT USER or ALL USERS by clicking RESTORE... within the utility.

Note: Do not manually remove the WACOM TABLET.PREFPANE file from the main LIBRARY PREFERENCEPANES folder. This file is only to be removed when uninstalling the Wacom software driver, and then only when using the Wacom Tablet Utility.

Ink does not work correctly with Intuos.

There may be a problem with the Ink preferences. Remove the damaged preference files as follows. They will be re-created when you enable handwriting recognition.

1. Open SYSTEM PREFERENCES, choose SHOW ALL and select INK. Then turn off handwriting recognition.
2. From the GO menu, choose your HOME. Open the LIBRARY and PREFERENCES folders. Remove the following preferences:
 - COM.APPLE.INK.FRAMEWORK.PLIST
 - COM.APPLE.INK.INKPAD.PLIST
 - COM.APPLE.INK.INKPAD.SKETCH
3. Go back to SYSTEM PREFERENCES and INK, and then enable handwriting recognition.
4. Test the Ink function using your Wacom tablet and pen.

If this procedure does not resolve your problem with Ink, contact Apple Support for further assistance. Wacom is not the software manufacturer for Ink and we are limited in our abilities to support a third-party software application.



TECHNICAL SUPPORT OPTIONS

If you have a problem with your tablet, first check the tablet installation guide to be sure the unit is installed correctly. Then review the [troubleshooting](#) procedures.

If you cannot find the answer in this manual, you may find updated information about your problem in the appropriate Read Me file for your platform (located on the Intuos installation CD). You can also visit www.wacom.com where you can choose the Wacom web site for your region and check the product FAQs (Frequently Asked Questions).

If you have an Internet connection you can download the latest software drivers from the Wacom web site for your region. See [obtaining driver downloads](#).

Check the Customer Care options on the Wacom web site for your region. You may find answers to your question without having to make a phone call.

If you cannot solve the problem and you think your tablet is not working properly, contact the Wacom Customer Care staff for the area where your product was purchased. See the tablet Read Me file, located on the Intuos installation CD, for contact information. You can also find contact information by checking the Wacom web site for your region.

When you call, you should be at your computer with the following information available:

- This manual.
- Tablet serial and model number. (Look on the bottom of the tablet.)
- Driver version number. (See the Intuos installation CD or click on the Wacom Tablet control panel ABOUT button.)
- The make and model of your computer, and operating system version number.
- A list of peripheral devices attached to your computer.
- The software application and version you were using when the problem occurred.
- The exact wording of any error message that appeared on your screen.
- What happened and what you were doing when the problem occurred.
- How you tried to solve the problem.

You can also contact the Wacom Customer Care Center by visiting the Wacom web site for your region and completing an Email Inquiry form.



OBTAINING DRIVER DOWNLOADS

Wacom periodically updates the tablet software driver to maintain compatibility with new products. If you are having a compatibility problem between Intuos and a new hardware or software product, it may be helpful to download a new software driver (when available) from the Internet.

USA, Canada, Central and South America

Worldwide Web: <http://www.wacom.com> Software updates

Europe, Middle East and Africa

Worldwide Web: <http://www.wacom.eu/downloads> Software updates

Japan

Worldwide Web: <http://tablet.wacom.co.jp/download> Software updates (Japanese)

Asia Pacific (English)

Worldwide Web: <http://www.wacom.asia> Software updates (English)

China

Worldwide Web: <http://www.wacom.com.cn> Software updates
(Simplified Chinese)

Hong Kong

Worldwide Web: <http://www.wacom.com.hk> Software updates
(Traditional Chinese)

Korea

Worldwide Web: <http://www.wacomkorea.com> Software updates (Korean)

Taiwan

Worldwide Web: <http://www.wacom.com.tw> Software updates
(Traditional Chinese)



APPENDIX

This section contains tips on caring for Intuos, instructions on how to uninstall the tablet software, information about digital inking, and more.

[Caring for Intuos](#)

[Replacing the pen nib](#)

[Uninstalling Intuos](#)

[Using the Express View display](#)

[Managing preferences](#)

[Installing multiple tablets](#)

[Using applications integrated for tablet control](#)

[Importing expert settings](#)

[Using the optional Airbrush and Art Pen](#)

[Using the optional Intuos Mouse](#)

[Pen and digital ink capabilities in Windows](#)

[Product information](#)

[Ordering parts and accessories](#)

[Available parts and accessories](#)

CARING FOR INTUOS

Keep your Intuos tools and tablet surface clean. Dust and dirt particles can stick to your tools and cause excessive wear to the tablet surface. Regular cleaning with a soft, damp cloth will help to prolong the life of your tablet surface and tools. You can also dampen the cloth using a very mild soap diluted with water. Do not use volatile liquids, such as paint thinner or benzene, because they may damage the plastic case.

Keep Intuos in a clean, dry place and avoid extremes in temperature. Room temperature is best. Also, your Intuos tablet and tools are not made to come apart. Twisting the pen case can break the pen. Taking apart the product will void your warranty.

Important: Take care to never spill liquids onto the tablet or input tools. Be especially careful of getting the tablet or tool buttons (including the pen tip and eraser) wet. They contain sensitive electronic parts that will fail if liquids enter them.

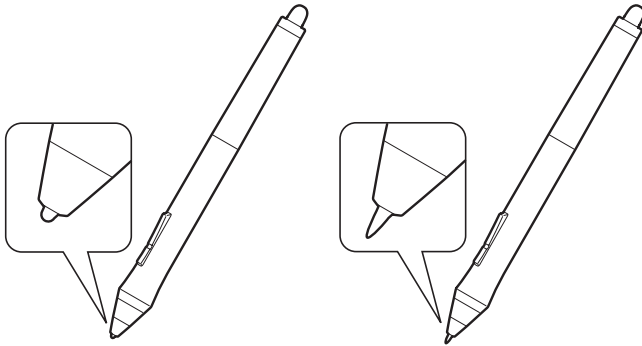
Prevent scratching by replacing your pen nibs frequently. When the nibs are worn or pointed they can damage your tablet. See [replacing the pen nib](#).

REPLACING THE PEN NIB



To protect your tablet from scratching and for best performance, periodically replace your pen nibs.

Important: Replace the pen nib before or when it looks like this:

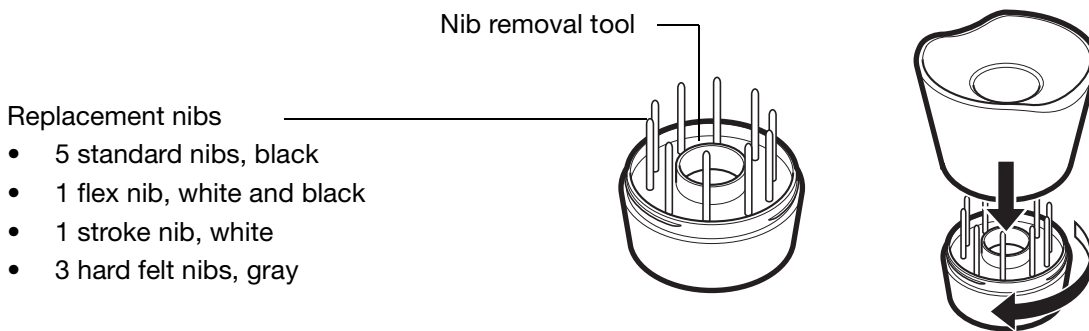


The pen nib (tip) will wear with normal use.

Excessive pressure will cause it to wear sooner.

Replace the nib when it gets too short or develops a flat point.

1. Unscrew the pen stand base to access the nib removal tool and replacement nibs.

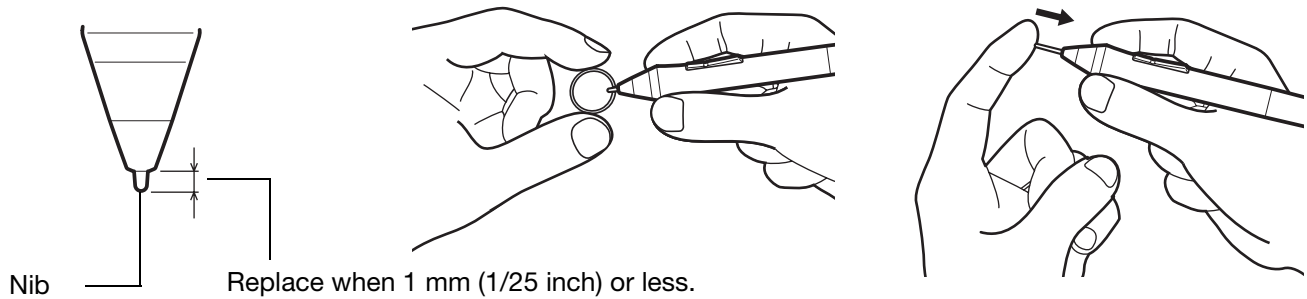


2. Clasp the old nib and pull it straight out of the pen. Use the nib removal tool, pair of tweezers, needle-nosed pliers, or similar instrument.





- Slide the end of the new nib straight into the barrel of the pen. Firmly push the nib until it stops.



Note: Stroke nibs are spring-loaded, providing additional tactile feedback when you are working with the Intuos pen or optional Airbrush. They are installed in the same manner as a standard pen nib.

⚠ Warning: Choking hazard. Prevent children from swallowing the pen nib or side switch. The pen nib or side switch may accidentally be pulled out if children are biting on them.

For replacement parts, see [available parts and accessories](#).

Important: When not in use, place the pen in the pen stand or lay it flat on your desk. When the optional Airbrush is not in use, lay it flat on your desk. To maintain the sensitivity of your input tools, do not store them in a container where they will rest on their tip or eraser.

UNINSTALLING INTUOS

Follow the appropriate procedure below to remove the tablet driver software from your system.

Important: When you remove the tablet software, your tablet will no longer operate with full tablet functionality but will continue to function as a mouse device.

Windows 7 and Vista: Click on the Windows START button and open the CONTROL PANEL. In the CONTROL PANEL window click on UNINSTALL A PROGRAM. In the dialog box that appears, choose WACOM TABLET and click UNINSTALL. Follow the prompts to remove the tablet driver. If prompted, enter your administrator log on name and password. Restart your computer after uninstalling the software.

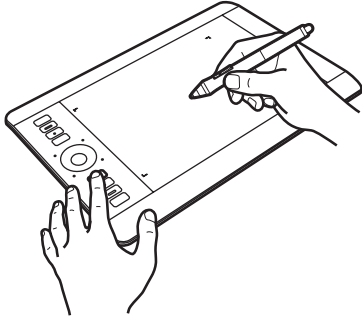
Windows XP: Click on the Windows START button and open the CONTROL PANEL. In the CONTROL PANEL window select ADD OR REMOVE PROGRAMS. In the ADD OR REMOVE PROGRAMS window, choose WACOM TABLET and click REMOVE. Follow the prompts to remove the tablet driver. If prompted, enter your administrator log on name and password. Restart your computer after uninstalling the software.

Mac: From the GO menu, choose APPLICATIONS and open the WACOM TABLET folder. Double-click on the WACOM TABLET UTILITY icon and select the TABLET SOFTWARE: REMOVE button. Enter your administrator log on name and password. After the removal is completed, click OK. Restart your computer after uninstalling the software.



USING THE EXPRESS VIEW DISPLAY

Rest your finger on an ExpressKey to activate the Express View display on your primary monitor. This display shows the current ExpressKey setting(s).



- The ExpressKey you touch appears hi-lighted in the display. Move your finger along the ExpressKeys to hi-light other keys in the display. If an ExpressKey has been disabled, it will be shown as disabled or there may be no display for that key.
- The display closes when you remove your finger from the ExpressKey, or if you rest your finger on the key for an extended period of time.

Notes:

Pressing an ExpressKey will not activate the Express View display.

To disable the display, open the Wacom Tablet control panel and choose the EXPRESSKEYS tab. Uncheck the SHOW EXPRESS VIEW box. Check the box to again activate the display.

MANAGING PREFERENCES

Use the Wacom tablet preferences utility to manage your tablet preferences for single or multiple users.

Windows: First close any open applications. Then open the utility by clicking the START icon and selecting ALL PROGRAMS. Select WACOM TABLET and WACOM TABLET PREFERENCE FILE UTILITY.

- To remove preferences for the current user, click REMOVE under MY PREFERENCES.
- To delete preferences for multiple users, click REMOVE under ALL USER PREFERENCES. Administrator rights are required to delete preferences for all users. Relaunch any currently open tablet-aware applications that you may be running.
- To back up your preferences, click BACKUP... under MY PREFERENCES.
- To restore preferences that you had previously backed up, click RESTORE... under MY PREFERENCES.
- Carefully follow any prompts that may appear.

Mac: Open the main APPLICATIONS folder. Then open the WACOM TABLET folder and run the WACOM TABLET UTILITY.

- To remove preferences, select CURRENT USER or ALL USERS. Then click REMOVE. Log out, then log back in. When the software driver loads it will create a new preferences file with the factory defaults.
- To back up your preferences, select CURRENT USER or ALL USERS. Then click BACKUP....
- To restore preferences that you had previously backed up, select CURRENT USER or ALL USERS. Then click RESTORE....
- Carefully follow any prompts that may appear.

INSTALLING MULTIPLE TABLETS

Any tablet that has been detected on your system will appear as an icon within the Wacom Tablet control panel TABLET list.

Select a tablet icon for which to customize tool and application settings.

- The control panel will not launch unless a supported tablet is connected to the computer.
- Settings can only be viewed or changed for an attached tablet.



To add a new tablet, connect it to your computer. The system will automatically find the tablet and initialize it. An icon for the tablet will then appear in the control panel.

Important: When installing additional tablets on Windows systems, the eraser function may not work in some applications when using the additional tablet(s). The eraser function will continue to work correctly using the first tablet that was added to the control panel.

To remove one of multiple tablets from the driver, select the tablet to be removed and click on the [-] button next to the TABLET list.

- A tablet must be attached to the computer before it can be deleted from the control panel list.
- You will need to restart your computer before you can again add the tablet to the driver.

USING APPLICATIONS INTEGRATED FOR TABLET CONTROL

Some software applications may be designed to directly control ExpressKey or Touch Ring function(s). When working in an application that has been integrated in this manner, the ExpressKeys or Touch Ring may perform differently than the function that is set in the Wacom Tablet control panel.

- When an ExpressKey is overridden by an application, the ExpressKey setting will automatically update, using either the new function name or “Application Defined”. Some or all of the ExpressKeys may be overridden, depending on the application.
- When an application overrides the Touch Ring, all Touch Ring modes are affected. If an application overrides only some of the available Touch Ring functions, the remaining mode(s) are set to SKIP.
- An integrated application will control the ExpressKeys or Touch Ring only when that application is active and in the foreground. When you close that application or select a new application pane to work in, your Wacom Tablet control panel settings are returned to their previous state.
- To review the ExpressKey, Touch Ring, or pen settings for the current front-most application, set an ExpressKey to [SHOW SETTINGS](#) and press the key at any time.

Applications that have been integrated in this manner will typically provide you with the opportunity to opt-out or disable this functionality when first using your Wacom product with the application. See the documentation provided with your application for any specific details on functionality and how to customize or disable this feature.

If an automatic prompt or the application’s documentation does not describe how to disable this behavior, you can use the Wacom Tablet control panel to create [application-specific settings](#) that will override the behavior of the integrated application.

Important: If an application-specific setting has been created for an integrated application, setting an ExpressKey or Touch Ring mode to APPLICATION DEFINED will still allow the integrated application to control the function.

IMPORTING EXPERT SETTINGS

The import expert settings feature enables you to import customized Wacom Tablet control panel settings that have been specified in an XML (Extensible Markup Language) file.

- Some software developers may create custom settings files which are specifically designed to provide optimum performance when using your Wacom product with their applications.
- Visit the Wacom web site for your region to choose from a variety of custom settings files that may be available for your product.
- Each XML file may include customized settings for one or more applications. These settings may apply to the ExpressKeys, Touch Ring, Radial Menu, or pen button and eraser functions.

To import expert settings:

1. Choose an XML file with settings for use with a particular application. Double-click on your file selection.
2. Carefully read and follow the instructions in the confirmation dialog.
 - The utility will import settings for one or more applications. Any previous settings for those applications may be overridden.
 - You are encouraged to back up any existing control panel settings before importing the expert settings.
 - You can cancel, or continue to import the settings.
3. When you choose to import settings, only the settings specified in the XML file will be imported. Any corresponding settings will be overridden with the new values. All other existing settings will remain unchanged.

After the import process is completed you will have an opportunity to view the new settings within the Wacom Tablet control panel.

USING THE OPTIONAL AIRBRUSH AND ART PEN



The optional Intuos Airbrush works like the Grip Pen, and includes a fingerwheel for additional control. Hold the Airbrush with your thumb and middle finger. The fingerwheel should be in a convenient location for you to roll it with your index finger. Tilt the Airbrush for a comfortable position that allows you to paint and draw with pressure sensitivity.

You can simulate realistic airbrushing with the proper software support. For example, apply pressure on the tip to control the brush size. Tilt the Airbrush to elongate and feather the spray pattern. Roll the fingerwheel to adjust the spray intensity.

Side switch _____

Default settings:

Windows:	RIGHT CLICK
Mac:	DOUBLE CLICK

Fingerwheel _____

Roll the fingerwheel backwards to increase ink flow or brush size, and forward to reduce it. Your index finger should operate the wheel independently of the pressure you apply to the tip.

The optional Intuos Art Pen responds to the pressure, tilt, and rotation you apply to the pen.

Side switches _____

Default settings:

Upper:	DOUBLE CLICK
Lower:	RIGHT CLICK

Eraser _____

Does not support rotation.

Replaceable nib _____

The Art Pen supports 360 degrees of rotation around the pen axis. As you draw within an application that supports rotation sensitivity, simply twist the Art Pen to create lines that narrow or broaden. While painting you can vary the rotation of a non-circular brush to change the stroke thickness. Depending on the brush shape characteristics you have selected in your application, you can simulate calligraphy pens, broad felt tip markers, and any other non-circular brushes or tools.

Important: When not in use, set the Airbrush or Art Pen flat on your desk. To maintain the sensitivity of your tool, do not store it in a container where it will rest on its tip or eraser. Leaving an Intuos tool on the tablet may interfere with screen cursor positioning when using other pointing devices.

See [product information](#) to learn more about which applications currently support the Airbrush fingerwheel or Art Pen rotation. See [ordering parts and accessories](#) for information on where to purchase an Intuos Airbrush or Art Pen.

USING THE OPTIONAL INTUOS MOUSE

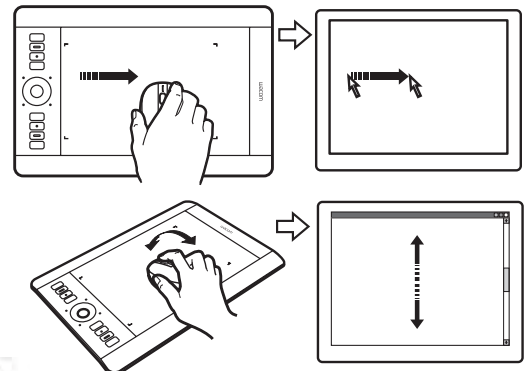
The optional Intuos Mouse is cordless, battery free, and works on the Intuos tablet.

Fingerwheel

Can be rolled, or pressed for an additional button function.

- Roll the fingerwheel to scroll in most windows and applications. Move the wheel forward to scroll up, and back to scroll down.
- Press down on the wheel to perform a MIDDLE CLICK.

Tip: For Microsoft Office applications that support a wheel mouse, press the CTRL key and move the fingerwheel to zoom in and out.



Right button
Displays a context menu when pressed.

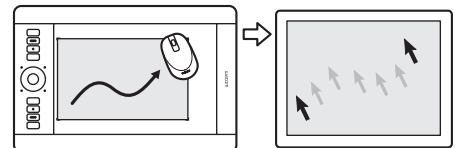
Left button
This is the primary button used to CLICK and select.

Front and rear buttons
These are set for FORWARD and BACK functionality within your Internet browser.

The [mouse buttons](#) can be customized.

Default settings:

Left:	CLICK
Right:	RIGHT CLICK
Middle:	MIDDLE CLICK
Front:	FORWARD
Rear:	BACK



[Mouse mode settings](#)

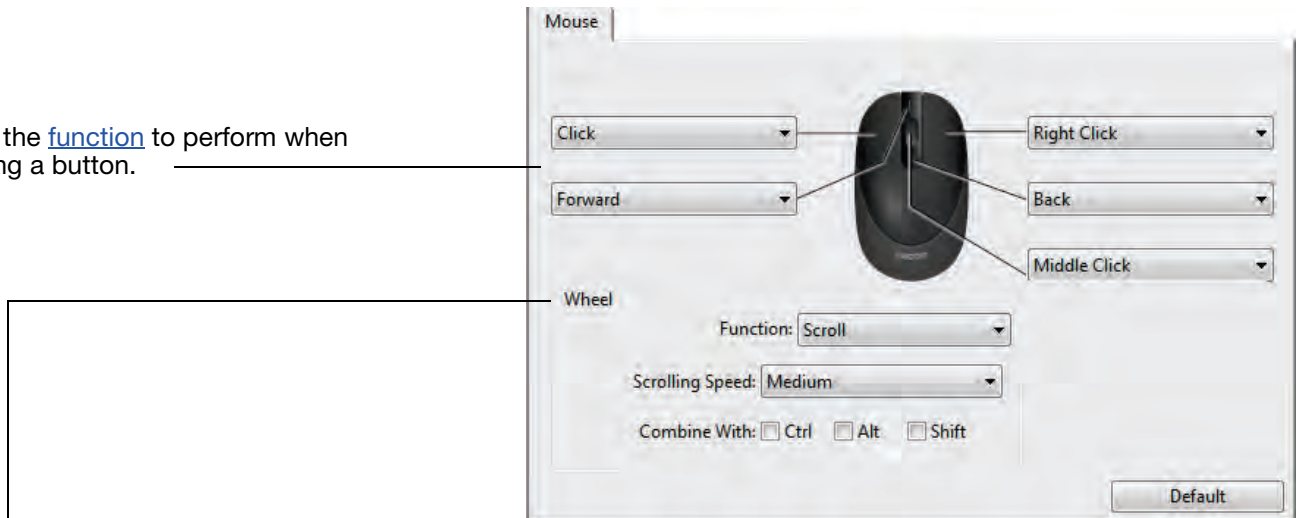
Important: When the Intuos Mouse is not in use, place it on your desk. Leaving an Intuos tool on the tablet may interfere with screen cursor positioning when using other pointing devices, or may prevent your computer from going to sleep.

See also [customizing the mouse](#).

CUSTOMIZING THE MOUSE

Use the Intuos Mouse to open the Wacom Tablet control panel. The MOUSE tool will be selected in the TOOL list. If the mouse is not automatically selected, choose it from TOOL list. Select the MOUSE tab.

Select the [function](#) to perform when pressing a button.



WHEEL options control the fingerwheel function.

SCROLL	<p>Default setting. When selecting SCROLL, the tab displays custom scroll options. Choose a SCROLLING SPEED to use for each notch of wheel movement.</p> <p>When you select one or more COMBINE WITH: modifier key options, the selected option(s) will be sent to the application along with each scroll action. For example, you can create custom zooming or other actions within an application.</p> <p><u>Mac</u>: The available options are OPTION, COMMAND (Apple key), CONTROL, and SHIFT.</p>
KEYSTROKE	<p>Assign custom functions to the fingerwheel by selecting KEYSTROKE. This is useful when working with repetitive functions. Keystroke(s) that you define are sent once for each notch of wheel movement.</p> <p>To double the speed of a keystroke action, enter the keystroke sequence twice within the DEFINE KEYSTROKE dialog box.</p>
DISABLED	Disables the wheel function.

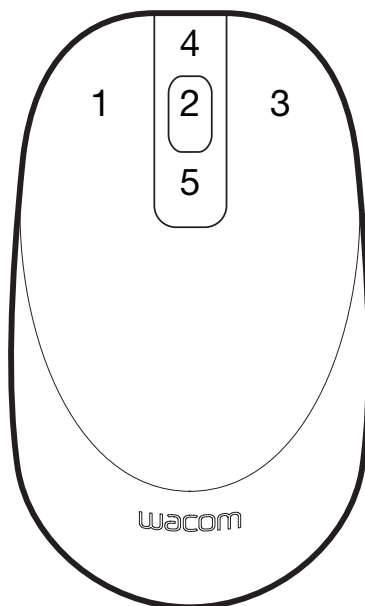
The mouse buttons are chordable. You can press two or more buttons simultaneously. For example, if you customize one button to simulate the CTRL key and another to simulate an ALT keystroke, when you press both buttons a CTRL+ALT is simulated.

Note: To configure the Intuos Mouse for left-handed use, simply reassign the button functions as needed. You can also open the Wacom Tablet control panel, click on OPTIONS... and select LEFT in the MOUSE HANDEDNESS group.



TESTING THE MOUSE

1. Use the Wacom Tablet control panel to open the DIAGNOSTICS dialog box. See [testing controls and input tools](#).
2. With the DIAGNOSTICS dialog box open, place the Intuos Mouse on the tablet active area and test by clicking each mouse button. A tablet status LED should brighten and the SWITCHES state should change for each button you click.



3. When the DIAGNOSTICS dialog box is first opened the WHEEL status should be 0. Move the fingerwheel backward. The WHEEL status should change from 0 to +1.
4. Move the fingerwheel forward. The WHEEL status should change to -1.

When done, click CLOSE to exit the dialog box.





PEN AND DIGITAL INK CAPABILITIES IN WINDOWS



Microsoft Windows 7 and Vista provide extensive support for pen input. Pen features are supported in all versions of Windows 7 and Vista except Windows 7 Starter and Home Basic, and Windows Vista Home Basic. Use Intuos and your Wacom pen for quick, intuitive results.

- **Note taking.** Jot notes and capture quick sketches in Windows Journal. Use the Journal search engine to locate your handwritten content.
- **Handwriting recognition.** Quickly enter handwritten information anywhere the computer accepts typed input. Convert your handwritten content to typed text at any time.
- **Gestures.** Make simple gestural movements on the tablet to trigger customizable actions. To customize gestures, select the FLICKS tab in the Windows 7 PEN AND TOUCH or Windows Vista PEN AND INPUT DEVICES control panel.
- **Digital Ink in Microsoft Office 2007.** Utilize the enhanced digital mark-up and inking tools found on the REVIEW tab within applicable applications.

The Windows 7 or Vista Input Panel enables you to use handwriting or an on-screen keyboard to directly enter text with your Wacom pen.

There are different ways to launch the Input Panel:

- Click on the Input Panel icon which appears when you move the screen cursor into a text entry area.
- Click on the Input Panel tab, located by default on the left edge of the display screen.
- Click on the Tablet PC Input Panel icon located on the Windows Taskbar. If the icon is not visible, right-click on the Taskbar, select TOOLBARS, and TABLET PC INPUT PANEL.

To disable the Input Panel:

1. Open the Tablet PC Input Panel.
2. Select TOOLS and OPTIONS.
3. Choose the OPENING tab and uncheck the following boxes:
 - FOR TABLET PEN INPUT, SHOW THE ICON NEXT TO THE TEXT BOX
 - SHOW THE INPUT PANEL TAB.
4. Click OK.

For details, study the documentation that came with your system, including the Windows training tools and Tablet PC tutorial. To access the Tablet PC Pen Training, from the START menu choose ALL PROGRAMS, TABLET PC, and TABLET PC PEN TRAINING. Search the Windows help system for training tools if they are not available from the START menu.





Search the Microsoft web site for enhanced information about digital inking in Windows. You can also visit the Wacom web site at www.wacom.com/vista

Note: The following workarounds in the Wacom software driver improve performance in Windows 7 and Vista:

- The Pen Flicks and 'press-and-hold-to-right-click' features are disabled in graphics applications using the Wintab API.
- There is no pressure sensitivity in Journal and other Ink features when both the Flicks and 'press-and-hold-to-right-click' features are disabled in the Windows 7 PEN AND TOUCH or Windows Vista PEN AND INPUT DEVICES control panel.

PRODUCT INFORMATION

To learn more about Intuos, visit the Wacom web site for your region. You can also discover which software applications are currently tablet enhanced to support the pressure sensitivity and other special functionality of your tablet.

USA, Canada, Central and South America	http://www.wacom.com/productinfo
Europe, Middle East and Africa	http://www.wacom.eu
Japan	http://tablet.wacom.co.jp
Asia Pacific (English)	http://www.wacom.asia
China (Simplified Chinese)	http://www.wacom.com.cn
Korea	http://www.wacomkorea.com
Taiwan	http://www.wacom.com.tw
Thailand	http://www.wacom-thai.com



ORDERING PARTS AND ACCESSORIES

Your Intuos professional pen tablet is the ultimate master tool for creative professionals. The tablet, combined with the Intuos Grip Pen and other available input tools, enables you to paint more intuitively, illustrate better, and edit imagery faster than ever before.

To purchase [available parts and accessories](#), refer to the Wacom tablet Read Me file and see who to call for your region.

You can also do the following:

- In the USA or Canada, call 1.888.884.1870 (toll-free) or visit Wacom's web site at <http://www.WacomDirect.com> (USA only).
- In Europe, call +49 (0)180.500.03.75 or send an email to spareparts@wacom.eu. Or, visit <http://shop.wacom.eu>. You can also contact your local dealer, distributor, or technical support using the appropriate number for your region.
- In Australia, Singapore, Taiwan and Korea, please visit: www.BuyWacom.com.au, www.BuyWacom.com.sg, www.BuyWacom.com.tw and www.BuyWacom.co.kr, respectively.
- In other countries, please contact your local dealer or distributor.

Some parts and accessories may not be available in all regions.

AVAILABLE PARTS AND ACCESSORIES

For a list of available parts and accessories, visit the Wacom web site for your region. See [ordering parts and accessories](#).



GLOSSARY

Active area. The navigation and drawing area of the tablet where touch or your Intuos tools are detected. See [touch sensor](#).

Application-specific settings. Intuos tool and tablet settings that have been customized for individual applications. The Wacom Tablet control panel enables you to customize a tool to behave uniquely in different applications. [Application-specific settings](#) are in effect whenever you use the application.

Aspect. The ratio between the vertical and horizontal dimension of the tablet or display.

Click force. The amount of force you must apply to the pen tip for a click to occur.

Digital Ink. A broad category that typically describes handwritten content which has been created using pen-based input on a computer. This handwritten content takes the form of sketches, ink mark-up, or handwriting. The handwriting can optionally be converted to typewritten text or simply left alone for use in its original format. Depending on your system and applications settings, the handwritten text you make with digital ink can be converted on-the-fly or at another time.

Display Toggle. An Intuos feature that allows you to work with your tablet on all displays or on one display at a time. Available only on multiple monitor systems. See [working with Display Toggle](#).

Double-click assist. A function of the Wacom Tablet control panel that makes it easier to double-click by setting the size of the double-click distance.

Double-click distance. The maximum distance (in screen pixels) that the screen cursor can move between clicks and still be accepted as a double-click. Increasing the double-click distance makes double-clicking easier, but may cause a delay in brush strokes in some graphics applications.

Double-click speed. The maximum time that can pass between clicks and still be accepted as a double-click.

Eraser-aware application. A software application that has built-in support for the pen eraser. These applications take advantage of the eraser in different ways, depending on what makes sense for the application.

Expand. A motion used when [navigating with touch](#). Touch the tablet with two fingers spaced closely together. Then while still touching the tablet surface, move your fingers apart.

ExpressKeys. The customizable control keys located on your Intuos tablet. See [using the ExpressKeys](#).

ExpressKeys Left. A tablet setting where the Touch Ring and ExpressKeys are oriented to the left of the tablet.

ExpressKeys Right. A tablet setting where the Touch Ring and ExpressKeys are oriented to the right of the tablet.



Fingerwheel. The control wheel on the optional Intuos Mouse and Airbrush.

Journal. A Microsoft Windows application that electronically simulates a physical journal pad, but with the advantages of digital note taking. For example, you can create quick sketches and jot handwritten notes that can be converted to text and sent on to colleagues for digital mark-up. Journal includes a variety of pen, marker, and highlighter tools, plus an eraser that is easily activated by the eraser end of your Wacom pen. Additionally, your handwritten content is searchable within Journal.

LED. Light-Emitting Diode. Used as tablet indicator light(s).

Mapping. The relationship between the tool position on your Intuos tablet and the cursor position on the monitor screen.

Modifier. Modifier keys include SHIFT, ALT, and CTRL for Windows, or SHIFT, CONTROL, COMMAND, and OPTION for Mac. You can customize your Intuos tool buttons or ExpressKeys to simulate a modifier key.

Mouse acceleration. A setting that allows you to adjust the screen cursor acceleration when using mouse mode.

Mouse mode. A method for positioning the screen cursor. When you place an Intuos tool on the tablet, you can move the screen cursor with a “pick up and slide” motion similar to using a traditional mouse. This is known as relative positioning, and is the default setting for the optional Intuos Mouse. See also [pen mode](#).

Mouse speed. A setting that allows you to adjust the speed at which your screen cursor moves when using mouse mode.

Nib. The replaceable pen tip.

Pairing. A method of creating a virtual cable link between two devices.

Pan. A motion used when [navigating with touch](#). Touch the tablet surface with your fingers and move them in the same direction.

Pen input. A method of controlling a computer using the pen tool on your Intuos tablet.

Pen mode. A pen input method of positioning the screen cursor. Wherever you place your Intuos pen tool on the tablet, the screen cursor will jump to the corresponding point on the screen. This is known as absolute positioning, and is the default setting for Intuos pen tools. Pen mode allows you to quickly position the screen cursor without having to first find it and then move it across the desktop. See also [mouse mode](#).

Pinch. A motion used when [navigating with touch](#). Touch the tablet with two fingers spaced slightly apart. Then while still touching the tablet surface, move or ‘pinch’ your fingers together.

Pixel. The smallest unit of measure on your monitor screen.

Pressure sensitive. A quality of the Wacom pen tip and eraser that senses the amount of pressure being applied. This is used to create natural-looking pen, brush, and eraser strokes in applications that are pressure sensitive.



Pressure-sensitive application. Any application that supports pressure-sensitive input.

Proximity. The height above the tablet [active area](#) where input tool detection occurs. See also [positioning](#).

Radial Menu. A hierarchical menu (in radial format). Each level of the menu consists of eight menu slices which may contain various features and options to choose from. You can customize the buttons of your input tools or tablet to display this menu.

Screen cursor. The pointer on the display screen. Screen cursors come in different shapes (such as an I-beam, arrow, or box), depending on which application you are running.

Swipe. A motion used when [navigating with touch](#). Touch the tablet surface with three, four, or five fingers and move them in the same direction.

Tablet PC Input Panel (TIP). The Microsoft Windows Tablet PC Input Panel enables you to use your Wacom pen to create handwritten notes or work with an on-screen keyboard. The Input Panel dynamically converts your handwriting to text. Information you create can then be inserted into other documents, spreadsheets, or illustrations.

Tap. A motion used when [navigating with touch](#). Touch and lift a single finger (or multiple fingers, depending on the gesture) from the tablet.

Tilt sensitive. A quality of the pen tip and eraser that senses the amount of tilt between the tool and tablet. This is used to create natural-looking pen, brush, and eraser strokes in applications that are tilt sensitive.

Touch. A method of interacting with a computer using only your fingers on the Intuos tablet. May also be referred to as “touch input”.

Touch Ring. The customizable control ring located on your Intuos tablet. See [using the Touch Ring](#).

Touch sensor. The navigation area of your Intuos tablet where touch is detected. The touch sensor resides within the active area, and does not accept pen input.

Track. A motion used when [navigating with touch](#). Touch and move a single finger across the tablet surface.

Twist. A motion used when [navigating with touch](#). Touch the tablet with two fingers spaced slightly apart and move (rotate) them in a circular fashion, or move them in opposing directions. Alternatively, hold one finger stationary and track your other finger around the stationary finger.

USB. Universal Serial Bus. A hardware interface standard for connecting computer peripheral devices. USB ports support hot-plugging, which allows you to disconnect a USB device without turning off your computer.

Wintab. An interface standard used by Windows applications for receiving tablet information. Intuos supports all Wintab-compatible applications under Windows.



INDEX

About the manual	5	pen	48
Accessories and parts		Radial Menu	66
available	120	tablet	52
ordering	120	ExpressKeys	53
Active area, understanding	16	Touch Ring	54
Adding a new tool	72	tablet to screen mapping	55
Airbrush		tilt sensitivity	52
holding	114	tip feel	49
replacing the tip	107	advanced	50
using	114	tool buttons	51
Applications, using integrated	112	touch	
Application-specific settings	69	custom functions	41
changing	71	standard functions	41
creating	70	Touch Ring	54
removing	71	Diagnostics	91
Art Pen, using	114	Display Toggle, working with	67
Button functions	59	Double-click, customizing	49
Care, for tools and tablet	106	Double-clicking, how to	22
Clicking, how to	22	Dragging, with pen	22
Control panel		Drawing	
basics	18	with pressure sensitivity	24
features	46	with tilt	24
lists	47	Driver downloads, obtaining	105
manage settings	45	Environmental conditions	106
opening	45	Eraser feel	
tabs	47	advanced	50
Controls, testing	91	customizing	50
Customizing	44	Erasing	25
double-click	49	Ergonomics	12
eraser feel	50	Expert settings, importing	113
advanced	50	Express View display	109
ExpressKeys	53	ExpressKeys	
mouse		customizing	53
buttons	116	testing	92
fingerwheel	116	using	27





Eye-hand coordination exercise	25	Orientation, configuring for tablet	14
Features		Parts and accessories	
control panel	46	available	120
pen	11	ordering	120
pen & touch models	7	Pen	
pen models	9	clicking with	22
pen stand	11	customizing	48
Force proportions	55	double-clicking with	22
Functions, button	59	dragging with	22
General problems, troubleshooting	94	drawing	
Holding		with pressure sensitivity	24
Airbrush	114	with tilt	24
pen	20	erasing with	25
Information, product	119	features	11
Input tools, testing	91	holding	20
Installing multiple tablets	111	pointing with	21
Intuos		positioning with	21
about your tablet	6	replacing the tip	107
setting up	12	side switch	23
tablets matrix	6	testing	93
the touch experience	30	tip, replacing	107
using	19	using	19
Mac-specific problems, troubleshooting	102	Pen mode	55
Manual, about	5	Pen problems, troubleshooting	95
Mapping, to multiple monitors	18	Pen stand, using	20
Mouse		Pens, optional	48
buttons, customizing	116	Pointing, with pen	21
fingerwheel		Positioning, with pen	21
customizing	116	Preferences, managing tablet	110
using	115	Pressure sensitivity, drawing with	24
testing	117	Product information	119
using	115	Proximity	21
Mouse mode	56	Radial Menu	
Multiple		customizing	66
monitors		using	66
mapping to	18	Removing application-specific settings	71
working with	18	Screen area, portion of	57
tablets, installing	111	Settings	
Navigation, customizing for touch	40	application specific	69
New tool, adding	72	changing application specific	71
Nib, replacing	107	creating application specific	70
Options, advanced	74	removing application specific	71
Ordering parts and accessories	120	Set-up	12



Side switch, using	23	Tool buttons, customizing	51
Software		Tools	
driver downloads	105	testing	91
uninstalling	108	working with multiple	72
Tablet		Touch	
area, portion of	58	adjusting touch speed	40
customizing	52	basic actions	31
ExpressKeys		custom touch functions	41
customizing	53	customizing	39
testing	92	disabling	42
using	27	five-finger gestures	39
features matrix	6	four-finger gestures	37
mode options, changing	73	gestures	31
orientation, configuring	14	navigating with	31
pen & touch model features	7	one-finger actions	32
pen model features	9	options	31
preferences, managing	110	setting navigation features	40
storing	106	speed, adjusting	40
testing	89	standard touch functions	41
Touch Ring		testing touch	43
customizing	54	the experience	30
testing	92	three-finger gestures	36
using	29	two-finger actions	33
working with	26	two-finger gestures	33
Tablet to screen mapping, customizing	55	Touch problems, troubleshooting	98
Technical Support, contacting	104	Touch Ring	
Testing		customizing	54
controls	91	testing	92
ExpressKeys	92	using	29
input tools	91	Troubleshooting	
mouse	117	general problems	94
pen	93	Mac-specific problems	102
tablets	89	pen problems	95
tools	91	tables	94
touch	43	testing controls	91
Touch Ring	92	testing input tools	91
Tilt		touch problems	98
drawing with	24	Windows-specific problems	101
sensitivity, customizing	52	wireless connection problems	99
Tip feel		Uninstalling software	108
advanced	50	USB cable, connection	15
customizing	49		





Using			
Airbrush	114	connection problems	99
applications integrated for tablet control	112	establishing a connection	77
Art Pen	114	optimizing the connection	79
ExpressKeys	27	power management	80
mouse	115	power saving	82
pen	19	setup	76
Radial Menu	66	status	
touch	30	battery	81
Touch Ring	29	connection	81
Wacom international offices	128	testing the wireless connection	87
Windows-specific problems, troubleshooting	101	wireless module, removal from tablet	85
Wireless operation	75	wireless receiver, storage in tablet	86
battery		Work area, setting up	12
charging	80		
life	83		
management	80		
replacement	84		
components	75		





WACOM INTERNATIONAL OFFICES

WACOM TECHNOLOGY CORPORATION

1311 SE Cardinal Court
Vancouver, WA 98683
U.S.A.

Telephone: +1.360.896.9833

Fax: +1.360.896.9724

WACOM CO., LTD.

JAPAN TABLET SALES DIVISION

Harmony Tower 18F, 1-32-2 Hon-Cho,
Nakano-Ku, Tokyo 164-0012
Japan

Internet: <http://tablet.wacom.co.jp>

WACOM CHINA CORPORATION

1103, Beijing IFC West Tower
No. 8 Jianguomenwai Street
Chaoyang District, Beijing 100022
China

Internet: <http://www.wacom.com.cn>

WACOM AUSTRALIA PTY. LTD.

Unit 8, Stage 1 Cumberland Green
2-8 South Street Rydalmere
NSW 2116 Australia

Telephone: +61.2.9422.6700

Fax: +61.2.9420.2272

WACOM TAIWAN INFORMATION CO., LTD.

Suite 605, 6th floor, No. 205 Tun-Hwa North Road
Taipei, 105 Taiwan

Telephone: +886.2.2712.2675

Fax: +886.2.2712.9789

WACOM EUROPE GMBH

Europark Fichtenhain A9
47807 Krefeld
Germany

Internet: <http://www.wacom.eu>

WACOM CO., LTD.

ASIA PACIFIC DIVISION

Harmony Tower 18F, 1-32-2 Hon-Cho,
Nakano-Ku, Tokyo 164-0012
Japan

Telephone: +81.3.5309.1513

Fax: +81.3.5309.1514

WACOM KOREA CO., LTD.

#1211, 12F KGIT Sangam Center,
1601 Sangam-dong, Mapo-gu, Seoul 121-913, Korea
Telephone: +82.2.557.3894

Fax: +82.2.557.3895

WACOM SINGAPORE PTE. LTD.

5 Temasek Boulevard
#12-09 Suntec Tower Five
Singapore 038985

Telephone: +65.6258.8640

Fax: +65.6258.8697

WACOM HONG KONG LIMITED

Room 1201, Tai Tung Building
8 Fleming Road
Wanchai, Hong Kong

Telephone: +852.25739322

Fax: +852.25739500

