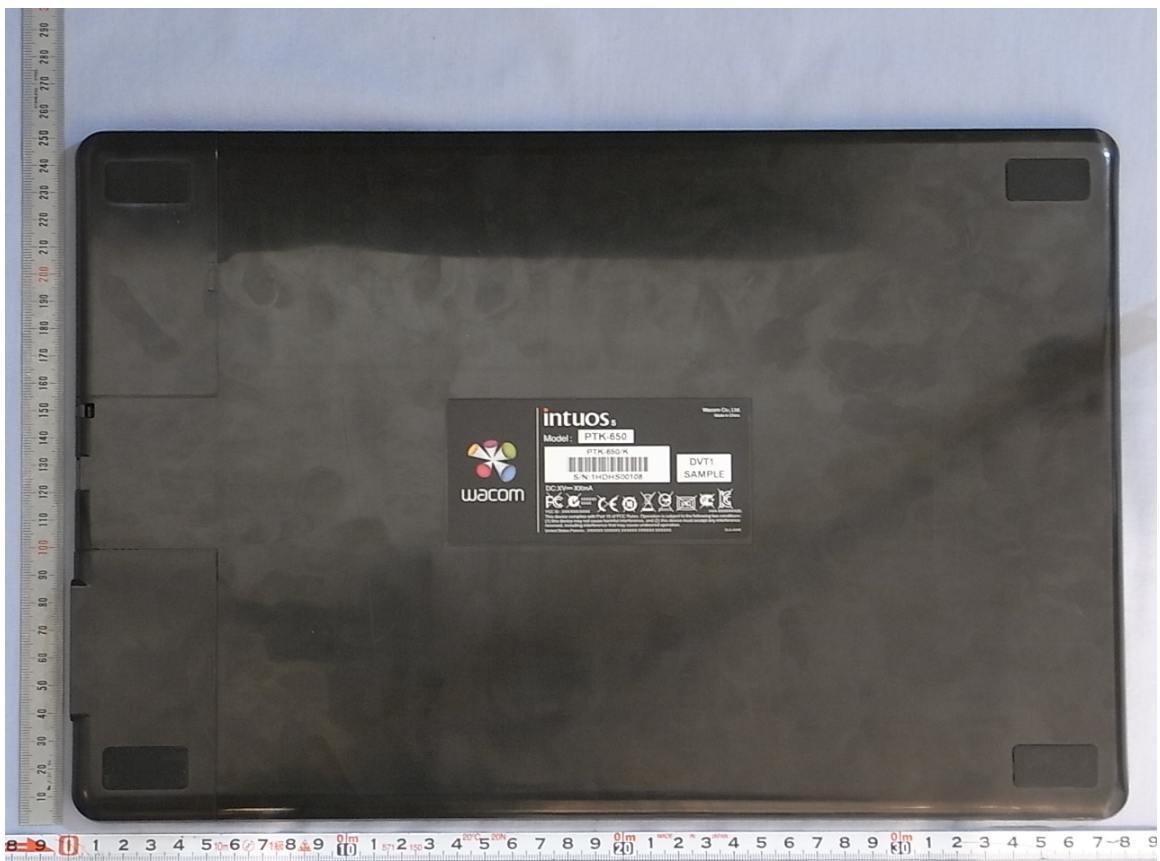
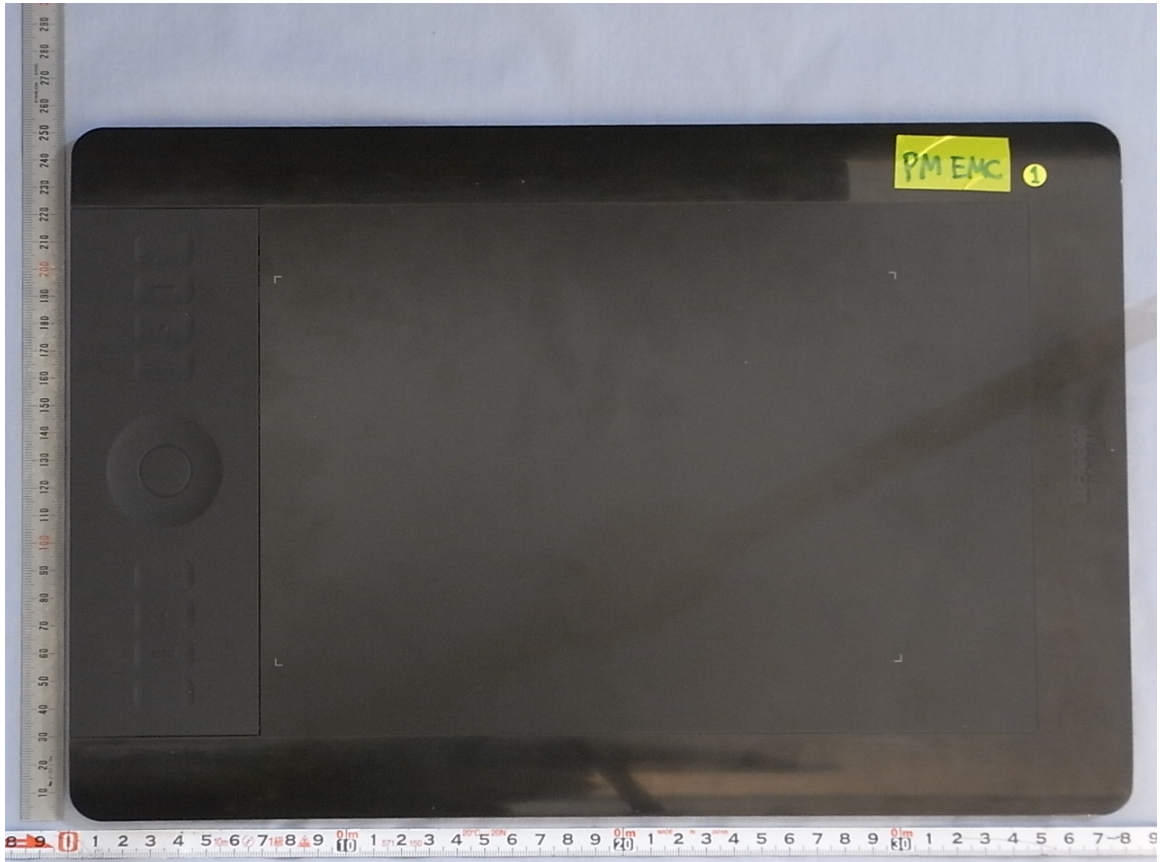
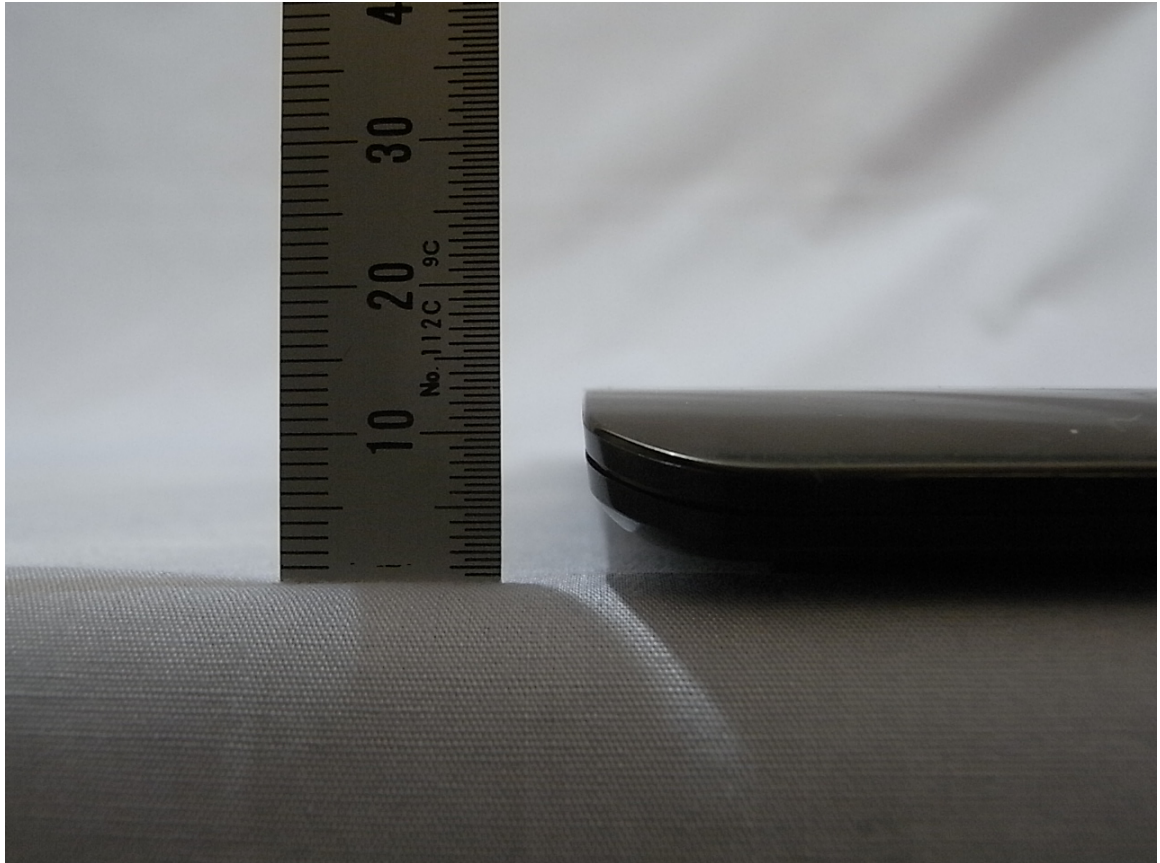


[PTK-650]

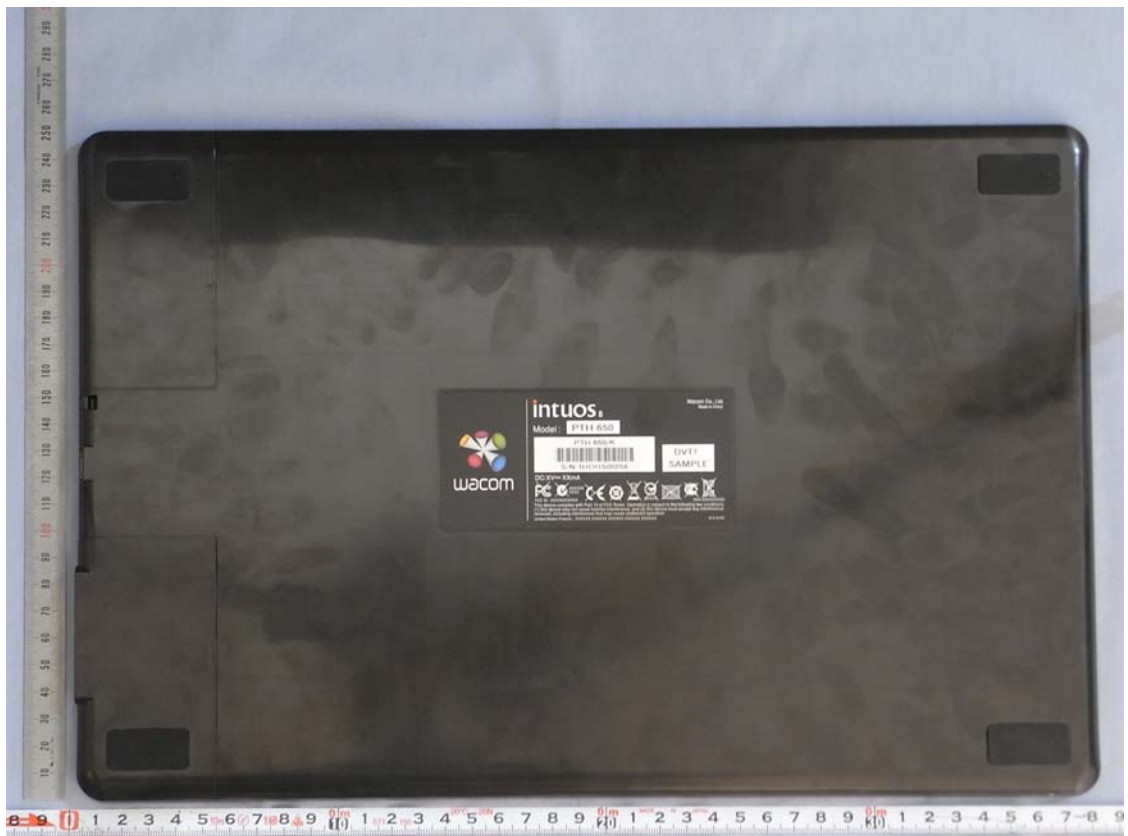
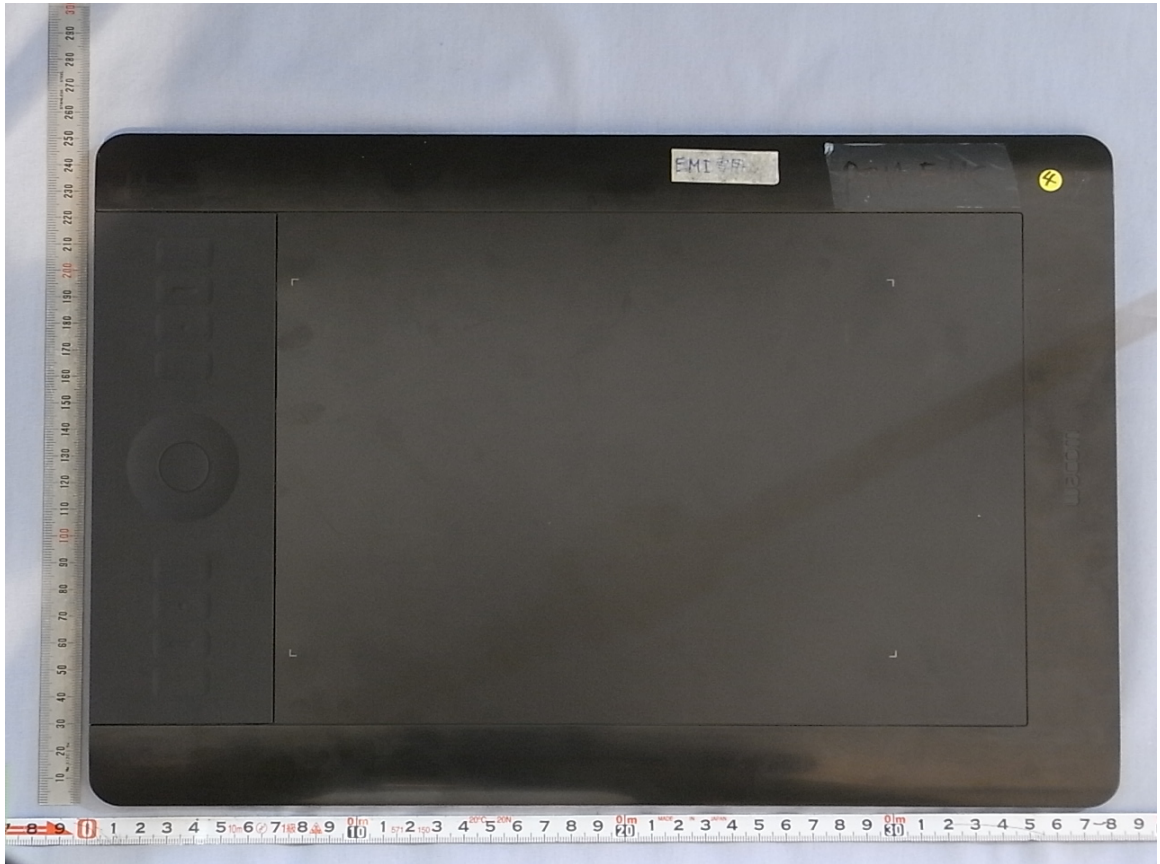


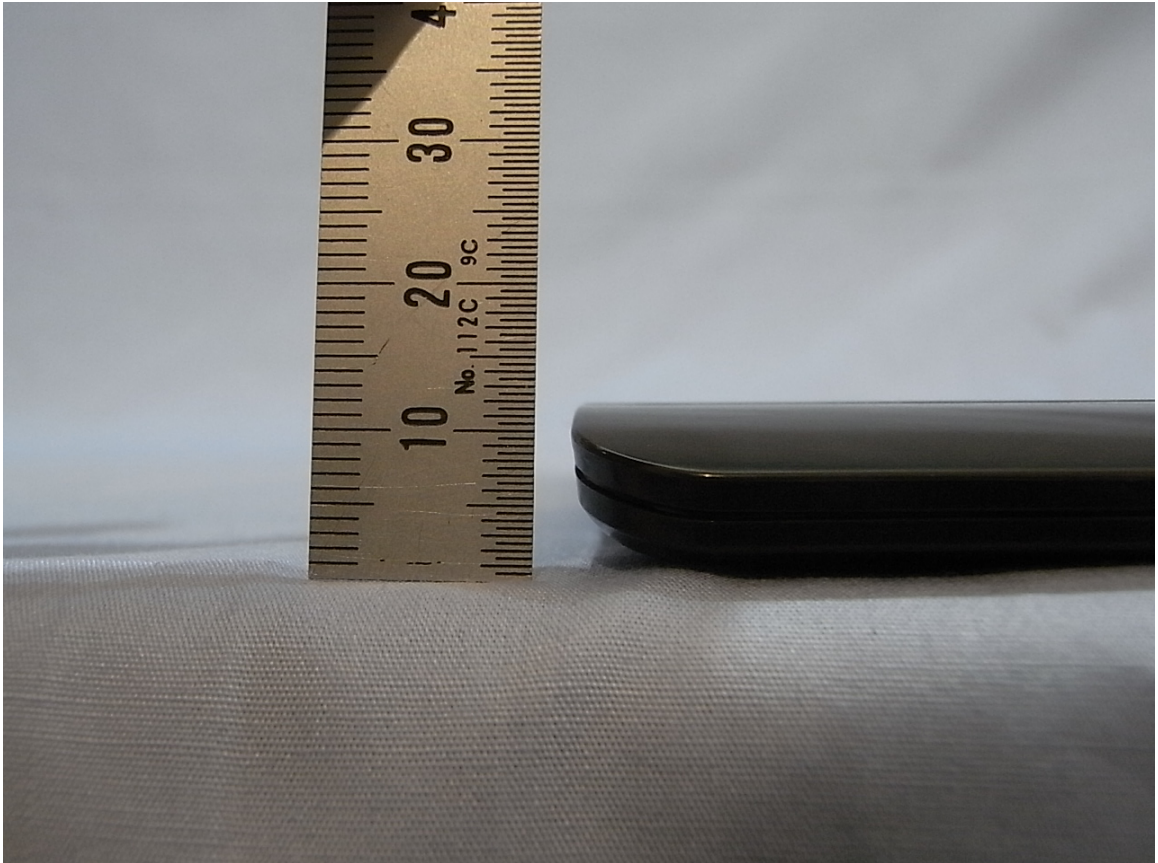


**Note1:** INF-A068 (Wireless Module, FCC ID: HV4INFA068) of Wireless Accessory Kit is connected with here. When the wireless is not used, the wireless module spacer is done.

**Note2:** INF-A069 (Wireless Receiver, FCC ID: HV4INFA069) of Wireless Accessory Kit is stored here. It doesn't connect with Pen Tablet electrically though it is stored here when not connected with PC.

[PTH-650]





**Note1:** INF-A068 (Wireless Module, FCC ID: HV4INFA068) of Wireless Accessory Kit is connected with here. When the wireless is not used, the wireless module spacer is done.

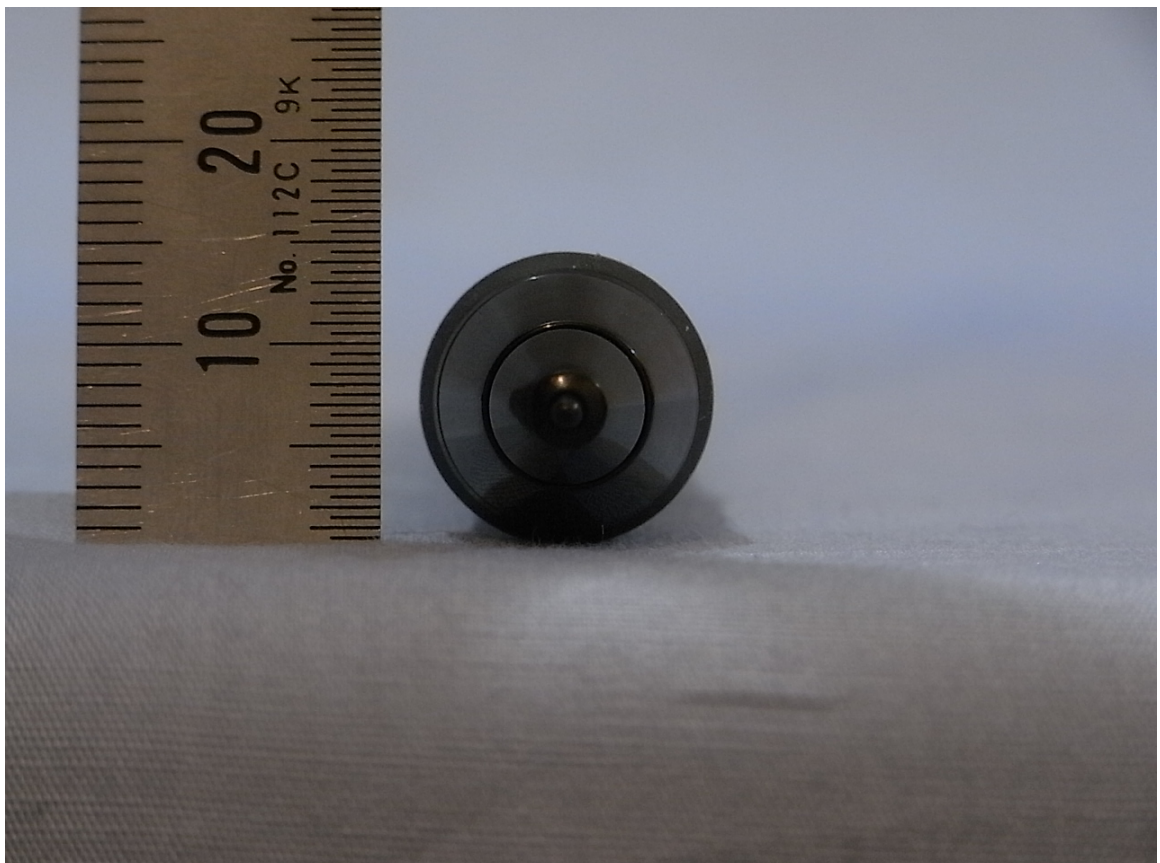
**Note2:** INF-A069 (Wireless Receiver, FCC ID: HV4INFA069) of Wireless Accessory Kit is stored with here. It doesn't connect with Pen Tablet electrically though it is stored here when not connected with PC.

Wacom Co., Ltd.  
FCC ID: HV4PTH650  
IC: 6888A-PTH650

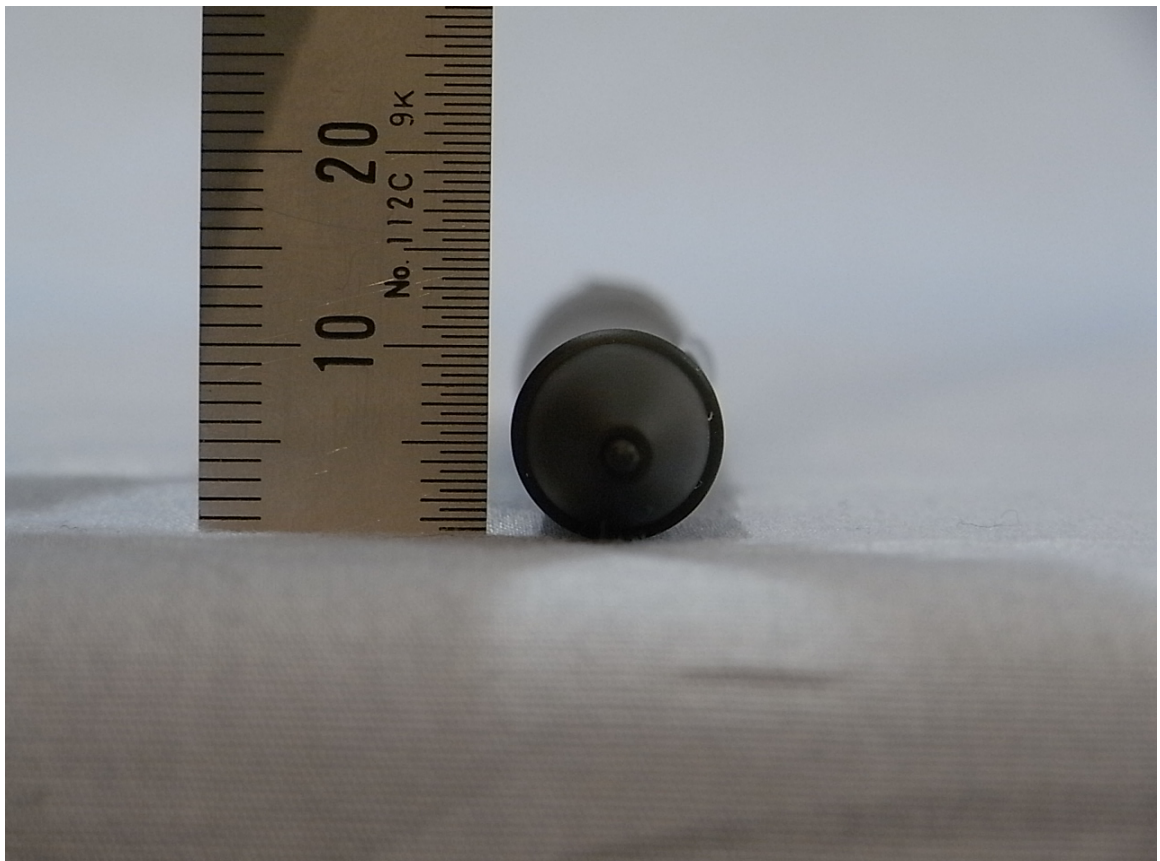
**[USB cable] \*Accessory**



[KP-501E] \*Accessory



[KP-300E] \*Option



[KP-400E] \*Option

