

NOT FOR CIRCULATION --This document is created for the application of international standard certificates and compliances.

LLC Tablet User's Guide

TABLE OF CONTENTS

| | |
|--|----|
| PREFACE | 2 |
| RADIO AND TELEVISION INTERFERENCE (U.S.A.) | 3 |
| USB TABLET INSTALLATION FOR WINDOWS | 4 |
| Tablet installation steps | |
| To view the Electronic Documentations: | |
| USB TABLET INSTALLATION FOR MACINTOSH | 6 |
| Tablet installation steps | |
| To view the Electronic Documentations: | |
| iMac requirements | |
| USING THE LLC PEN AND CORDLESS MOUSE | 8 |
| CUSTOMIZING YOUR LLC TOOLS — THE BASICS | 9 |
| TROUBLE SHOOTING | 10 |
| General Problems | |
| Windows and PC specific Problems | |
| Macintosh specific Problems | |
| PRODUCT SPECIFICATIONS | 15 |
| APPENDICES | 16 |
| Software License | |
| Warranty on Sales in Asia-Pacific area | |

PREFACE

Welcome to the Wacom LLC Tablet.

This manual describes how to install LLC Tablet. Installation instruction is separately described according to the tablet's communication interface and your computer platform.

Detailed information about how to use the tablet driver software is not included in this manual. Please refer to the Electronic documents in the driver software CD-ROM that came with your tablet.

The followings are not included in this product.

- Information about your specific computer hardware.
- Information about your operating system.
- Information about other Wacom tablets.
- Information about application software.

Please refer to your computer hardware, operating system, or software application manuals.

Many graphics applications have built-in support for LLC Tablet features (such as pressure-sensitivity and eraser support). You can find a listing of applications that support these features at "www.wacom.com/productsupport/". Refer also to your application manuals for information on how best to use LLC Tablet features within specific applications.

Radio and Television Interference (U.S.A.)

The equipment described in this manual generates, uses, and can radiate radio-frequency energy. If it is not installed and used properly—that is, in strict accordance with Wacom instructions—it may cause interference with radio and television reception.

Federal Communications Commission (FCC) Notice

This equipment has been tested and found to comply with the limits for Class B digital devices, pursuant to Part 15 of FCC Rules. These limits are designed to provide reasonable protection against harmful interference in a residential installation.

This equipment generates, uses and can radiate radio frequency energy and, if not installed and used in accordance with the instructions, may cause harmful interference to radio communications. However, there is no guarantee that interference will not occur in a particular installation.

You can determine whether the LLC tablet is causing interference by powering it off. If the interference stops, it was probably caused by the Ithe LLC tablet.

If your LLC tablet does cause interference to radio or television reception, you may be able to correct the interference by using one or more of the following measures:

- Rotate the television or radio antenna until the interference stops.
- Move the LLC tablet farther away from the television or radio.
- Plug the Interactive Pen Display and computer into an outlet that is on a different circuit from the television or radio.

If necessary, consult your Wacom dealer or an experienced radio/television technician for help.

Changes or modifications to this product not authorized by Wacom could void the FCC Certification and negate your authority to operate the product.

USB TABLET INSTALLATION FOR WINDOWS

Tablet installation steps

1 Plug LLC Tablet into an active USB port on your computer or an active USB hub. If your computer is off, turn it on now and allow the operating system to fully load.

2 LLC Tablet software installation steps

For Windows 98:

1 The NEW HARDWARE FOUND dialog box will display, followed by the ADD NEW HARDWARE Wizard. Click Next. If the dialog does not display, your computer may not be USB Ready.

2 Follow the prompts, making sure to select the default options.

Note: You may be prompted to insert the Windows 98 CD. Please have your Windows 98 CD available. If Windows 98 came bundled with your computer, the Windows 98 CAB files may be located on your hard disk or system recovery CD. When prompted, click OK. Enter the location for the Windows CAB files (e.g., d:\win98). Click OK, and then Finish. Reinsert the LLC Tablet CD if necessary.

3 Insert the LLC Tablet CD into the CD-ROM drive.

4 Double-click on the software SETUP icon located on the LLC Tablet CD and follow the prompts.

For Windows 2000:

LLC Tablet will automatically register as a USB device and the LED will light.

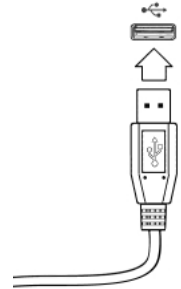
1 Insert the LLC Tablet CD into the CD-ROM drive.

2 Double-click on the software SETUP icon located on the LLC Tablet CD and follow the prompts.

3 After completing the LLC Tablet software installation, you should be able to use your LLC Tablet Pen on the tablet to move the screen cursor with absolute positioning.

A WACOM TABLET group was created in the START menu under PROGRAMS (see Page 4). It contains the LLC Tablet control panel, USER'S MANUAL, and a README file. If you had trouble with software installation, refer to the TROUBLE SHOOTING chapter, or README file or English Electronic LLC Tablet Manual in the LLC Tablet CD.

IMPORTANT: *If your PC was not configured with a USB keyboard or USB mouse, it may not support USB devices while in Windows Safe Mode. In this*

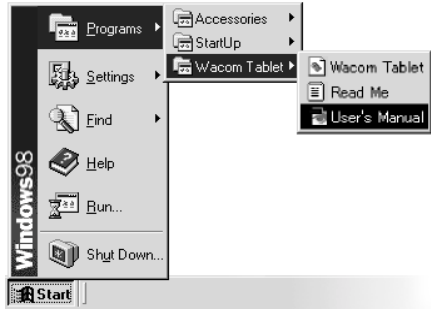


case, LLC Tablet will not function in Safe Mode.

To view the Electronic Documents:

To view the LLC Tablet Help that explains how to use the LLC Tablet software, select LLC Tablet Help from the Help menu or Help button of the Wacom Tablet software.

To view the English Electronic LLC Tablet User's Manual, select LLC TABLET USER'S MANUAL from the WACOM TABLET group.



If you want to read the LLC Tablet User's Manual before installing LLC Tablet, run the install program and select CUSTOM INSTALL. Deselect all components except USER'S MANUAL and ACROBAT READER. Click INSTALL, and follow the prompts.

USB TABLET INSTALLATION FOR MACINTOSH

Tablet installation steps

USB ports support hot-plugging so you can connect or disconnect LLC Tablet without turning off your computer.

If you are using an iMac, refer to the iMac Requirements section before installing LLC Tablet.

1 Plug the LLC Tablet USB connector into a USB port on your computer or into an active USB hub.

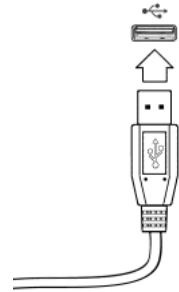
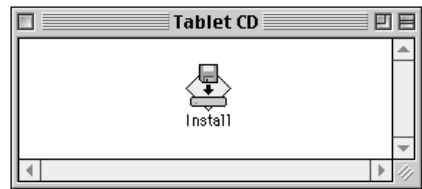
2 If your computer is off, turn it on now. The tablet LED will light to indicate LLC Tablet has registered as a USB device. If the LED does not light, your USB port may not be functioning properly; refer to the TROUBLE SHOOTING chapter.

LLC Tablet is working in mouse emulation mode. You should now be able to use your LLC Tablet Pen on the tablet to move the screen cursor.

IMPORTANT: *For pressure-sensitivity, you must install the tablet software from the LLC Tablet CD. Disable any virus protection programs and close all open applications before installing the software.*

2 Insert the LLC Tablet CD into your computer.

3 Double-click the INSTALL icon and follow the prompts.



To view the Electronic Documents:

To view the online Help that explains how to use the LLC Tablet software, select the online HELP from the pull-down menu or click on the help button , in the Wacom Tablet copntrol panel.



To view the Electronic LLC Tablet User's Manual, double-click on the LLC TABLET USER'S MANUAL icon located in the WACOM TABLET folder.

If you want to read the English LLC Tablet User's Manual before installing LLC Tablet, run the install program and select CUSTOM INSTALL. Deselect all components except USER'S MANUAL and ACROBAT READER. Click INSTALL, and follow the prompts.

iMac Requirements

LLC Tablet requires Mac OS 8.5 and Mac OS ROM 1.2.1 or greater.

1 Verify the Mac OS and ROM versions: Click on the Apple icon and select ABOUT THIS COMPUTER.... The ABOUT THIS COMPUTER dialog will appear with the OS version displayed in the top right corner. Mac OS 8.5 or greater is required. If the version shown is older than Mac OS 8.5, contact your local computer dealer to purchase an upgrade.

If Mac OS ROM version 1.2.1 or greater displays under the Mac OS version, your iMac does not need the firmware or OS ROM update. If it does not appear or an older Mac OS ROM is installed, continue with the instructions below to install the iMAC FIRMWARE UPDATE and then install iMAC UPDATE 1.1.

2 Install the iMac firmware update: In the APPLE iMAC UPDATES folder located in the LLC Tablet CD, double-click on the iMAC FIRMWARE UPDATE icon. This will decompress the file. Within the open folder that appears on the desktop, double-click on the iMAC FIRMWARE UPDATE icon and follow the prompts. If in doubt, install this update.

3 Install iMac Update 1.1: Install iMAC UPDATE 1.1 by double-clicking on the iMAC UPDATE 1.1 icon located in the APPLE iMAC UPDATES folder. This will decompress the file. Within the open folder that appears on the desktop, double-click on the iMAC UPDATE icon and follow the prompts. If in doubt, install this update.

4 After updating your system, perform the USB Tablet Installation.

USING THE LLC TABLET PEN AND CORDLESS MOUSE



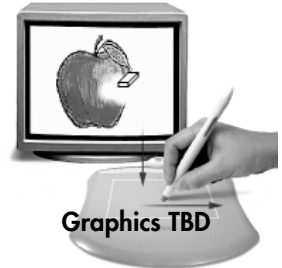
Pointing and selecting.

Move the LLC Tablet Pen above the tablet surface to position the screen cursor, then press the pen tip on the tablet to make a selection.

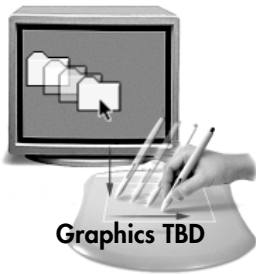
Clicking. Tap the tablet once with the pen tip.

Double-clicking. Press the upper side switch (Windows) or lower side switch (Macintosh), or quickly tap the tablet twice in the same place with the pen tip.

Dragging. Select an object, then slide the pen tip across the tablet surface to move the object.



Erasing. In supporting applications, the pen's eraser works like the eraser on a pencil. In text applications, use the eraser to select text, then lift the eraser from the tablet to delete the text.



Using the LLC Tablet Cordless Mouse. Place the Cordless Mouse on the tablet. The screen cursor is positioned when you move the Cordless Mouse across the tablet surface. Move the fingerwheel forward or backward to scroll in the active window.



Windows - Click on the left button to perform a left click. Click on the fingerwheel for a middle click, and on the right button for a right click.

Macintosh - Click on the left button to perform a click. Click on the fingerwheel for a double-click, and on the right button for a Ctrl+click.

CUSTOMIZING YOUR LLC TABLET TOOLS — THE BASICS

The Wacom control panel makes it easy to customize your LLC Tablet tools.

To open the control panel:

Windows. Click on the Windows Start button and choose Programs. From the Wacom Tablet group, choose the Wacom Tablet option.

Macintosh. From the Apple menu, choose Control Panels and then Wacom Tablet.

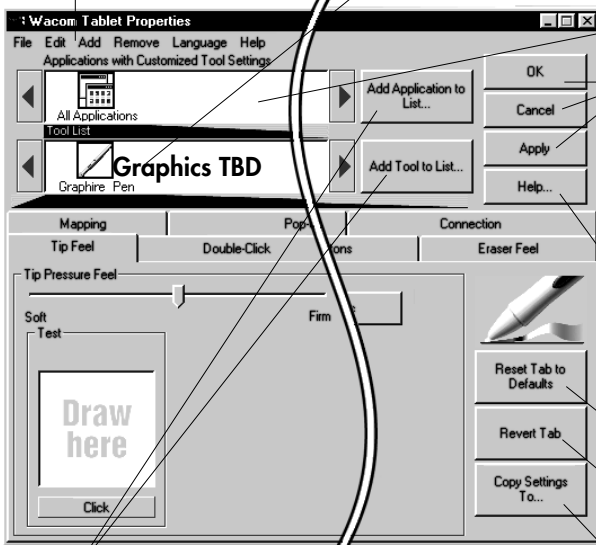
When you open the control panel with the LLC Tablet Pen or Cordless Mouse, the tool is automatically selected in the Tool List and the appropriate tabs are displayed. To customize the selected tool, make your changes to the tab controls. On Windows systems, be sure to click Apply or OK to save your changes.

Note: Application-specific settings are for advanced users. Refer to the online User's Manual or Help for more information on creating and using application-specific settings.

The pull-down menus access a variety of control panel features.

Displays tools that can be customized for the application selected above.

Displays applications that have custom tool settings associated with them.



Windows only

OK saves changes and closes the control panel. *Cancel* closes the control panel without saving changes. *Apply* saves changes without closing the control panel.

Help... Displays online Help for the control panel.

Displays applications that have custom tool settings associated with them.

Tabs display settings for the selected application and tool.

Resets the selected tab to its factory default values.

Returns a tab to its previously saved or last applied settings.

Copies settings from one tool or application to another.

These buttons are for creating application-specific settings. Refer to the online User's Manual or Help for details.

TROUBLE SHOOTING

General Problems

| SYMPTOM | HINT |
|--|---|
| The computer does not have an available USB port. | Check if there is an available USB port on a USB hub. If none are available you will need to add a USB hub. |
| The LLC Tablet Pen selects everything, will not stop drawing. | Open the Wacom control panel and go to the tool's TIP FEEL tab. Move the TIP PRESSURE FEEL slider toward Firm, or select the More Options button and increase the Click Force setting. |
| The side switch does not work. | Be sure you press the side switch when the pen tip is in proximity--do this without pressing down on the pen tip. From the Wacom control panel, verify that the side switch is set to the proper function for the application and tool that you are using. Make sure the tablet status LED changes from orange to green when you press the side switch. If it does not, you may have defective hardware (See also the last part of this section). |
| Changing the function settings for the LLC Tablet tools has no effect. | Make sure that you change the settings for the tool and the application that you are using. See <i>Working with Graphier Tools</i> and <i>Working with Application-Specific Settings</i> in the online Help or LLC Tablet User's Manual. |
| The screen cursor jumps back. | Do not place the LLC Tablet Pen or Cordless Mouse on the tablet when using another pointing device. Leaving your tool on the tablet may interfere with screen cursor positioning when using other input devices. |
| Double-clicking is difficult. | Be sure you are quickly tapping the tablet twice in the same place on the tablet's active area. Wacom recommends using the side switch to double-click . Try increasing the DOUBLE-CLICK DISTANCE or reducing the double-click speed (see ADJUSTING DOUBLE-CLICK in the ONLINE HELP). Try using a lighter TIP PRESSURE FEEL (see ADJUSTING TIP FEEL in the ONLINE HELP). |

| SYMPTOM | HINT |
|---|---|
| The LLC Tablet Pen tip does not function. | Make sure the status LED changes from orange to green when the tip is pressed. If it does not, you may have defective hardware (See also the last part of this section). Check the control panel's <i>TOOL BUTTONS</i> tab and verify that the tip is assigned to a <i>LEFT CLICK</i> (<i>CLICK</i> for Macintosh) function. |
| Within a graphics application, you notice a screen delay while drawing lines on the tablet. | In the Wacom control panel, try decreasing the <i>DOUBLE-CLICK DISTANCE</i> or increasing the double-click speed (see <i>ADJUSTING DOUBLE-CLICK</i> in the <i>ONLINE HELP</i>). If that does not work, try unchecking the <i>DOUBLE-CLICK ASSIST</i> checkbox. |
| You have to press hard with the LLC Tablet Pen when clicking or drawing. | Open the Wacom control panel and go to the tool's <i>TIP FEEL</i> tab. Move the <i>TIP PRESSURE FEEL</i> slider toward <i>SOFT</i> , or select the <i>MORE OPTIONS</i> button and decrease the <i>CLICK FORCE</i> setting. |
| The tablet hardware seems defective. | See <i>TROUBLE SHOOTING</i> in the English LLC Tablet user's manual to test your tablet. See <i>APPENDIX</i> in this manual for product support. |

Windows or PC Specific Problems

| SYMPTOM | HINT |
|---------------------------------------|---|
| The USB tablet power light is not on. | <p>Make sure all USB cables are securely connected to an active USB port. Try connecting to the USB port on another computer if available.</p> <p>If the tablet's status LED does not illuminate after your computer is on and has finished booting up, your USB port may be inactive. LLC Tablet USB tablets require Windows 98. If you upgraded your computer to Windows 98, verify that the USB ports are enabled in the BIOS and that all necessary system software has been installed. Refer to your system documentation or contact your system manufacturer for information on enabling USB support for your computer.</p> <p>Run the USB Ready utility located on the LLC Tablet CD to check if your system is USB ready. If your system is not USB ready, correctly configure your USB port and install the necessary USB system software, then restart your computer. The <i>NEW HARDWARE FOUND</i> dialog should appear and you can continue with the LLC Tablet installation.</p> |

| SYMPTOM | HINT |
|--|---|
| After switching to left-handed mouse in the Mouse control panel, the pen tip no longer works as a left click | This will reverse the right and left button settings on your Wacom tools. Restart Windows for your Wacom tool settings to be correctly recognized. |
| Cannot move the cursor where you want to on the screen, or the line you are drawing does not line up with the location of the pointer in paint applications. | Open the Wacom control panel and go to the MAPPING tab. Verify that PEN MODE is selected and that the DISPLAY AREA is set to ENTIRE DISPLAY for the selected tool and application. If this does not help, click on the RESET TAB TO DEFAULTS button to reestablish tablet to screen mapping. If this does not work, open the Windows folder and delete the WACOM.DAT file. Then restart your computer. When the tablet driver loads, it will create a new preferences file with the factory default settings. |
| When the pen tip contacts the tablet surface, the cursor jumps to the top left corner of the screen, or the message, "Unable to implement function", appears in the Wacom control panel. | If you have had another manufacturer's tablet, and the drivers are still loaded on your system, uninstall these drivers according to their manufacturer's instructions and reinstall the LLC Tablet driver. ACECAT: Edit your SYSTEM.INI. Go to the drivers= line in the [boot] section and remove awintab. Then go to the [drivers] section and remove the awintab=awintab.driv line. Look also for any reference to Virtual Tablet and remove it. Save the changes and restart Windows. KURTA: Edit your SYSTEM.INI by looking for any references to wtkurta and removing them. Save the changes and restart Windows. |
| After pressing CTRL+ALT+DEL, the screen cursor cannot be controlled with your LLC Tablet tool. | When the CLOSE PROGRAM dialog box (Windows 95, 98 or Me) or the TASK MANAGER (Windows NT) is active, the Wacom tablet will not work. Use your mouse or keyboard to continue. When this dialog box is closed, you can again use your LLC Tablet tool to control the screen cursor. |

| SYMPTOM | HINT |
|---|---|
| <p>Windows 98 or Me. When working with multiple monitors, the screen cursor positioning is incorrect after moving into the unmapped area of the virtual desktop.</p> | <p>On a multiple monitor system, the tablet is mapped to the virtual desktop (a rectangular area covering all monitors). In the Wacom control panel's PORTION OF DISPLAY dialog box, the screen rectangle represents the entire virtual desktop.</p> <p>If your video display areas do not form a rectangle because they are different sizes or they are not evenly aligned, the screen cursor positioning will be incorrect after moving into the unmapped area of the virtual desktop. To reestablish the correct screen cursor position, lift your LLC Tablet tool out of tablet proximity and bring it back into proximity over an area of the tablet that is mapped to a display area.</p> |
| <p>After changing the resolution of a monitor or the alignment of the monitors on a multiple monitor system, a portion of the tablet or monitor is not accessible and the tablet to display mapping is incorrect.</p> | <p>To reestablish the correct tablet to display mapping, open the Wacom control panel. Select the MAPPING tab, and choose ENTIRE DISPLAY.</p> <p>Click OK to close the control panel, then restart your computer.</p> |
| <p>Windows NT. Application-specific settings do not work correctly or blue screen crash occurs.</p> | <p>You must update the operating system with Service Pack 3 (SP3) or later in order for application-specific settings to work correctly.</p> <p>Running your LLC Tablet software on a Windows NT 4.0 system that is not updated to SP3 may cause you to experience a blue screen crash.</p> |
| <p>In Windows 95, 98 or Me, your LLC Tablet tool does not function inside a full screen DOS window.</p> | <p>You must use a mouse when working in a full screen DOS window.</p> |

Macintosh Specific Problems

| SYMPTOM | HINT |
|---|--|
| The USB tablet status LED is off. | <p>Make sure all USB cables are securely connected to an active USB port.</p> <ul style="list-style-type: none">■ If you have an iMac, you will need Macintosh OS 8.5 and Mac OS ROM 1.2.1. Refer to the iMac Update instructions for information on running the iMac Update software located on the LLC Tablet CD.■ If you added a USB interface card you must also install system software to support the USB card. If your computer came from the factory with a USB port installed, it should be USB ready.■ Plug in a different USB device to verify that the USB port is functional. |
| At startup, a dialog box appears telling you that either the driver failed to load or the tablet preferences have not yet been created. LLC Tablet works in mouse mode and pressure does not function. | <p>The tablet was not detected at startup. Make sure all cables are securely connected and that the status LED on the tablet is orange. If this does not correct the problem, see <i>Testing Your LLC Tablet</i> in the electronic LLC Tablet user's Manual.</p> <p>If you are using an iMac, install the iMac Firmware Update and iMac Update 1.1 located in the LLC Tablet CD. Then install the LLC Tablet software.</p> <p>If the LLC Tablet software was not installed or did not load properly, the tablet will function in mouse emulation mode and pressure support will not be available. If the driver was not installed, complete the software installation. If the driver failed to load, see <i>Resolving Software Conflicts</i> in the electronic LLC Tablet User's Manual.</p> |
| Cannot move the screen cursor where you want to on the screen, or the line you are drawing does not line up with the location of the pointer in paint application. | <p>Open the Wacom control panel and go to the MAPPING tab. Verify that PenMode is selected. If this does not help, the Wacom preference file may be corrupted. Click on the RESET TAB TO DEFAULTS button to reestablish tablet to screen mapping.</p> <p>If this does not work, from the System Folder open the Preferences and Tablet folder. From the Tablet folder, drag the Tablet Preferences file into the trash. Then restart your computer. When the tablet driver loads, it will create a new preferences file with the factory default settings.</p> |

APPENDICES

PRODUCT SPECIFICATIONS

LLC TABLET (FT-0405U)

| | |
|----------------------------------|--|
| Active area (W x D) | 127.6 x 92.8 mm |
| Physical size (W x D x H) | 224.1 x 221.0 x 22.3 mm |
| Weight | 314 g |
| Cable length | 1.5 m |
| Coordinate resolution (relative) | 40 lpmm (1015 lpi) |
| Accuracy | +/- 0.5 mm (0.02 in) |
| Maximum reading height | 3 mm (0.12 in) approximately |
| Maximum report rate | 98 points per second |
| Communication interface | USB (USB tablets) |
| Connector | USB A (USB tablets) |
| Power consumption | 0.2 watts |
| Power requirements | DC 5V 40 mA, from USB port |
| Operating temperature | 5 to 40 degrees C (41 to 104 degrees F) |
| Storage temperature | -10 to +60 degrees C (14 to 140 degrees F) |
| Operating relative humidity | 20% to 80% noncondensing |
| Storage relative humidity | 20% to 90% noncondensing |
| Certification | BSMI |
| Compliance | CE |

LLC PEN (MODEL FP-100)

| | |
|-----------------------|---|
| Physical size (L x D) | 149 x 12.3 mm |
| Pressure levels | 512 levels |
| Pen tip travel | 2 mm (0.08 in) or less 0.5 mm (0.05 in), approximately when 400 grams of tip force is applied. |
| Weight | 10 g (0.02 lb), approximately |
| Tip refill type | Polyacetal (Part No. PSI-A007) |

LLC CORDLESS MOUSE (MODEL EC-100)

| | |
|---------------------------|-------------------------|
| Physical size (L x W x H) | 113.3 x 61.3 x 36.0 mm |
| Weight | 83 grams, approximately |

LICENSE AND WARRANTIES

(WORLDWIDE, EXCEPT FOR EUROPE, AFRICA AND MIDDLE EAST)

Software License

This legal document is an agreement between you, the end-user, and Wacom Technology Corporation (Wacom).

1. **Grant of License.** The enclosed product includes computer programs embedded in firmware and accompanying diskette or CD-ROM (the "Software"). The Software is licensed, not sold, to you for use only with Wacom products upon the terms of this license, and Wacom reserves any rights not expressly granted to you. Wacom grants to you a non-exclusive right to use this copy of the Software in conjunction with a Wacom product at a single location.
2. **Ownership of Software.** Although you may own the product in which the Software is originally recorded, Wacom retains ownership of the Software itself. You acknowledge that the Software is Wacom's property, and contains valuable confidential, unpublished information developed or acquired by Wacom at great expense, including data processing algorithms, innovations and concepts. The Software is protected by copyright and other federal and state laws. You agree to use your reasonable best efforts to protect the Software from unauthorized reproduction, distribution, disclosure, use, or publication.
3. **Copy Restrictions.** Unauthorized copying of the Software is expressly forbidden.
4. **Use Restrictions.** You may not decompile, reverse assemble, disassemble or reverse engineer the Software.
5. **Termination.** This License is effective until terminated. This License will terminate automatically without notice from Wacom if you fail to comply with any provisions of the License.
6. **Miscellaneous.** This License is governed by the laws of the United States of America and the state of California except in Asia Pacific and by the laws of Japan for Asia Pacific.

LIMITED WARRANTY

Wacom warrants the product, except for the Software, to be free from defects in materials and workmanship under normal use and service for a period of one (1) year from the date of original retail purchase, as evidenced by a copy of the receipt and a registration card that has been returned to Wacom within 30 days of purchase.

The Software is licensed "as is." Wacom makes no warranty with respect to its quality or performance. Wacom cannot guarantee you uninterrupted service or the correction of any errors.

Upon discovery of a defect in the product, except in the Software, within the Warranty Period, you should contact Wacom Technical Support via telephone to obtain an RMA (Return Merchandise Authorization) number and instructions for shipping the product to a service location designated by Wacom. You should send the product, shipping charges prepaid, to the designated service location, accompanied by the return authorization number, your name, address and telephone number, proof of purchase date, and a description of the defect. Wacom will pay for return shipping by United Parcel Service or by an equivalent service as chosen by Wacom. Wacom's sole obligation and entire liability under this warranty shall be, at Wacom's option, either the repair or replacement of the defective product or parts thereof of which Wacom is notified during the Warranty Period; provided, however, that you are responsible for (i) the cost of transportation of the product to the designated service location and (ii) any loss or damage to the product resulting from such transportation.

Wacom shall have no responsibility to repair or replace the product if the failure of the product has resulted from accident, abuse, misuse, negligence, or unauthorized modification or repair, or if it has been handled or stored other than in accordance with Wacom's storage instructions. Any descriptions, drawings, specifications, samples, models, bulletins, or similar material, used in connection with the sale of the product, shall not be construed as an express warranty that the product will conform or comply with your requirements.

EXCEPT FOR THE LIMITED WARRANTY DESCRIBED ABOVE, THERE ARE NO OTHER WARRANTIES MADE BY WACOM ON THIS PRODUCT. NO ORAL OR WRITTEN INFORMATION OR ADVICE GIVEN BY WACOM, ITS DEALERS, DISTRIBUTORS, AGENTS, OR EMPLOYEES SHALL CREATE A WARRANTY OR IN ANY WAY INCREASE THE SCOPE OF

THIS WARRANTY, AND YOU MAY NOT RELY ON ANY SUCH INFORMATION OR ADVICE. THIS WARRANTY GIVES YOU SPECIFIC LEGAL RIGHTS, WHICH VARY FROM STATE TO STATE.

WACOM LIMITS THE DURATION OF ANY LEGALLY IMPLIED WARRANTIES INCLUDING IMPLIED WARRANTIES OF MERCHANTABILITY OR FITNESS FOR A PARTICULAR PURPOSE, TO THE DURATION OF WACOM'S EXPRESS WARRANTY. SOME STATES DO NOT ALLOW LIMITATIONS ON HOW LONG AN IMPLIED WARRANTY LASTS. SO THE ABOVE LIMITATION MAY NOT APPLY TO YOU. NEITHER WACOM NOR ANYONE ELSE WHO HAS BEEN INVOLVED IN THE CREATION, PRODUCTION, OR DELIVERY OF THIS PRODUCT SHALL BE LIABLE FOR ANY DIRECT, CONSEQUENTIAL, OR INCIDENTAL DAMAGES (INCLUDING DAMAGES FOR LOSS OF BUSINESS PROFITS, BUSINESS INTERRUPTION, LOSS OF BUSINESS INFORMATION AND THE LIKE) ARISING OUT OF THE USE OF OR INABILITY TO USE SUCH PRODUCT, EVEN IF WACOM HAS BEEN ADVISED OF THE POSSIBILITY OF SUCH DAMAGES. BECAUSE SOME STATES DO NOT ALLOW THE EXCLUSION OR LIMITATION OF LIABILITY FOR CONSEQUENTIAL DAMAGES, THE ABOVE LIMITATION MAY NOT APPLY TO YOU.

In the event that any of the above limitations are held unenforceable, Wacom's liability for any damages to you or any party shall not exceed the purchase price you paid, regardless of the form of any claim.

This Limited Warranty is governed by the laws of the United States of America and the state of California.

This Limited Warranty is valid for and only applies to products purchased and used inside the United States (and its territories or possessions) and Canada.

WARRANTY ON SALES OUTSIDE OF U.S. AND CANADA

For products purchased or used outside of the United States and Canada, upon discovery of a defect in the product, except in the Software, within the Warranty Period you should notify your local dealer or distributor. In all other respects the terms of the warranty as set forth above apply to such sales.

Should you have any questions about this Agreement, or if you desire to contact Wacom for any reason, please contact in writing:

In North and South America contact:
Wacom Technology Corporation
1311 S.E. Cardinal Court
Vancouver, Washington 98683
U.S.A.

In Asia and Asia Pacific contact:
WACOM Co., Ltd.
2-510-1 Toyonodai
Otone-Machi, Kitasaitama-Gun
Saitama, 349-1148
Japan

Copyright © WACOM Company, Limited, 2002

All rights reserved. No part of this manual may be reproduced except for your express personal use. Wacom reserves the right to revise this publication without obligation to provide notification of such changes. Wacom does its best to provide current and accurate information in this manual. However, Wacom reserves the right to change any specifications and product configurations at its discretion, without prior notice and without obligation to include such changes in this manual.

TRADEMARKS

Wacom is a registered trademark and LLC Tablet is a trademark of Wacom Company, Limited. Apple, the Apple logo, and Macintosh are registered trademarks of Apple Computer, Inc., registered in the U.S. and other countries. Microsoft, Windows and Windows NT are either registered trademarks or trademarks of Microsoft Corporation in the United States and/or other countries. Any additional company and product names mentioned in this documentation may be trademarked and/or registered as trademarks. Mention of third-party products is for information purposes only and constitutes neither an endorsement nor a recommendation. Wacom assumes no responsibility with regard to the performance or use of these products.