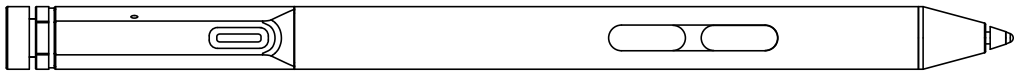


Lenovo Pen Pro

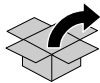


Lenovo[™]

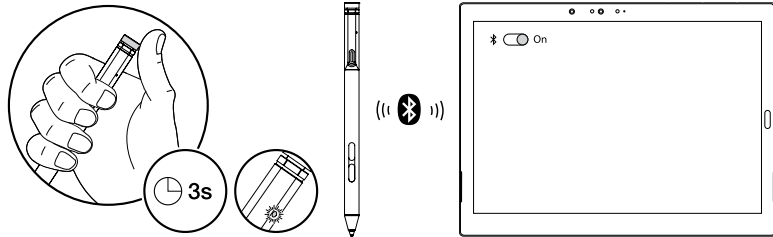
Before using the product, ensure that you read the safety documentation that comes with the product. To charge the pen, connect the pen to a USB-C port of the computer with a USB-C cable.

使用本產品之前，請務必閱讀產品隨附的安全文件。如果要為本產品充電，請使用USB-C線纜通過您電腦USB孔進行充電。

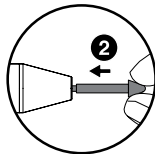
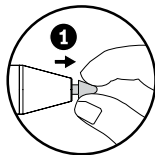
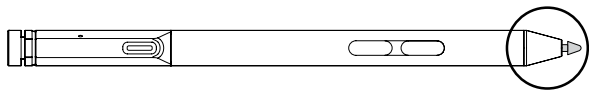
In the box
内容物



Pair the pen
配對數位筆



Replace the pen tip
更換筆尖



Pen overview
數位筆概觀



English

1 Top pen button

2 LED indicator

- Charging status
 - Solid amber: charging
 - Solid green: fully charged
- Battery power status
 - Blinking amber: battery power is below 20% (charging recommended)
 - Off: no battery power (charging recommended) or battery power is above 20%
- Bluetooth pairing status
 - Green, blinking once every second: pairing
 - Green, blinking five times quickly in two seconds: paired
 - Green, blinking once: top pen button is pressed or double pressed

3 USB-C connector (for charging)

4 Top barrel button (default function: right-click)

5 Bottom barrel button (default function: erase texts or drawings)

6 Pen tip

Note: Default button functions might vary. For more information, refer to your computer user guide at <https://support.lenovo.com>.

繁體中文

1 數位筆頂端按鈕

2 LED 指示燈

- 充電狀態
 - 穩定的琥珀色：充電中
 - 穩定的綠色：已完全充電
- 電池電力狀態
 - 閃爍的琥珀色：電池電力少於 20% (建議充電)
 - 熄滅：無電池電力 (建議充電) 或電池電力有 20% 以上
- 藍芽配對狀態
 - 綠色、每秒閃爍一次：配對中
 - 綠色、兩秒內快速閃爍五次：已配對
 - 綠色、閃爍一次：數位筆頂端按鈕已按下一次或連按兩次

3 USB-C 接頭 (用於充電)

4 上方的筒狀按鈕 (預設功能：按右鍵)

5 下方的筒狀按鈕 (預設功能：消除文字或繪圖)

6 筆尖

附註：按鈕的預設功能可能有所不同。如需相關資訊，請參閱您的電腦使用手冊，網址為 <https://support.lenovo.com>。

荷蘭商聯想股份有限公司台灣分公司

台北市中山區北安路780號7樓

First Edition (April 2018)

© Copyright Lenovo 2018.

Lenovo[®] and the Lenovo logo are trademarks of Lenovo in the United States, other countries, or both. Other company, product, or service names may be trademarks or service marks of others.

LIMITED AND RESTRICTED RIGHTS NOTICE: If data or software is delivered pursuant to a General Services Administration "GSA" contract, use, reproduction, or disclosure is subject to restrictions set forth in Contract No. GS-35F-05925.



SP40C97742