

5

4

3

2

1

DTU-710

GM1601 LCD CONTROLLER BOARD SCHEMATICS

CONTENTS

REVISION HISTORY

SCHEMATIC	SHEET
CONTENTS	1
Top Level	2
Input	3
GM1601	4
Frame Store & Memory I/F	5
Interface	6
Power	7

Date	Author	Ver	Comments
03/25/04		1	Engineering sample
06/10/04		2	DVT sample

Approval	Organization	Signature	Date
Gary Yu		Peter Lin	03/25/04
Gary Yu		Peter Lin	06/10/04

Foxlink Image Technologies Corporation		
Title 1.0 CONTENTS		
Size	Document Number DTU-710	Rev 2
Date:	Wednesday, July 14, 2004	Sheet 1 of 7

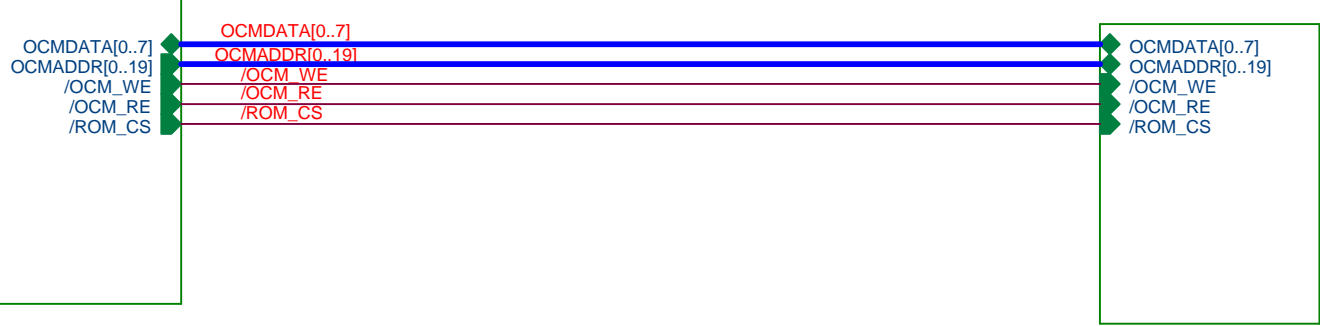
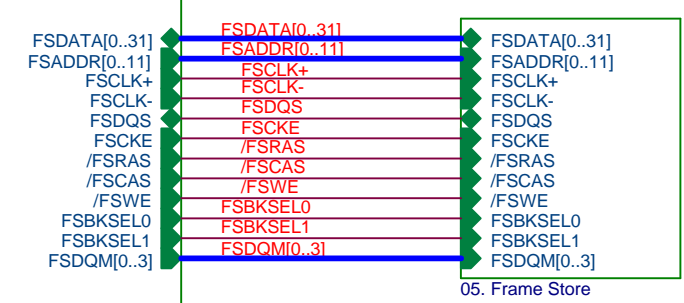
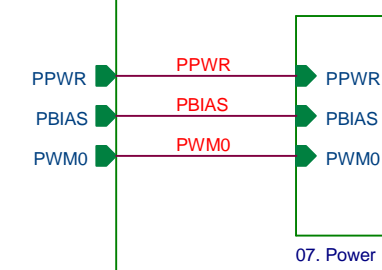
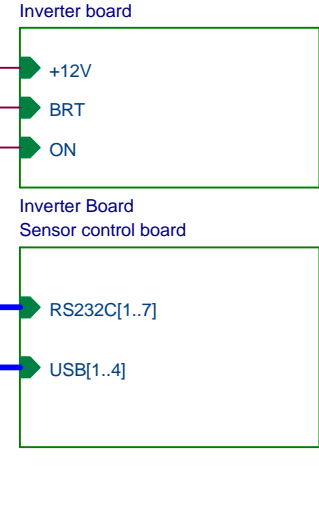
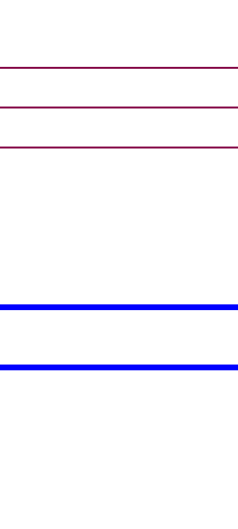
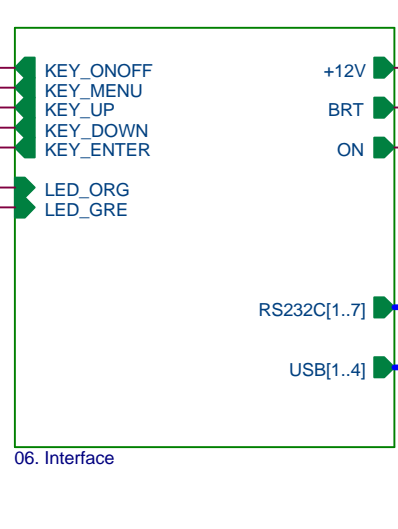
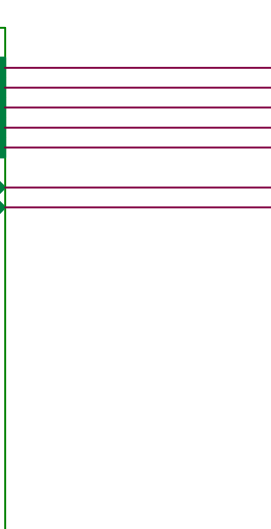
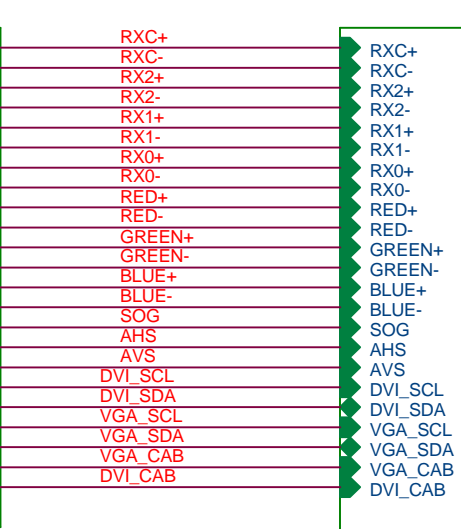
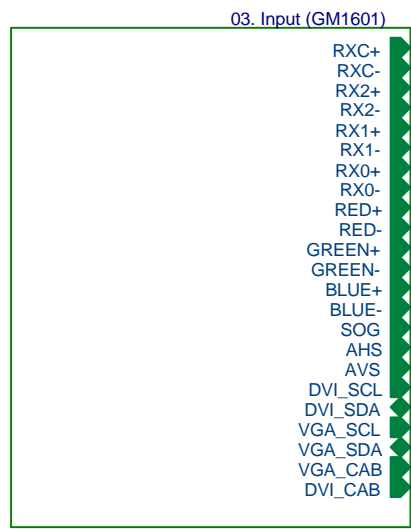
5

4

3

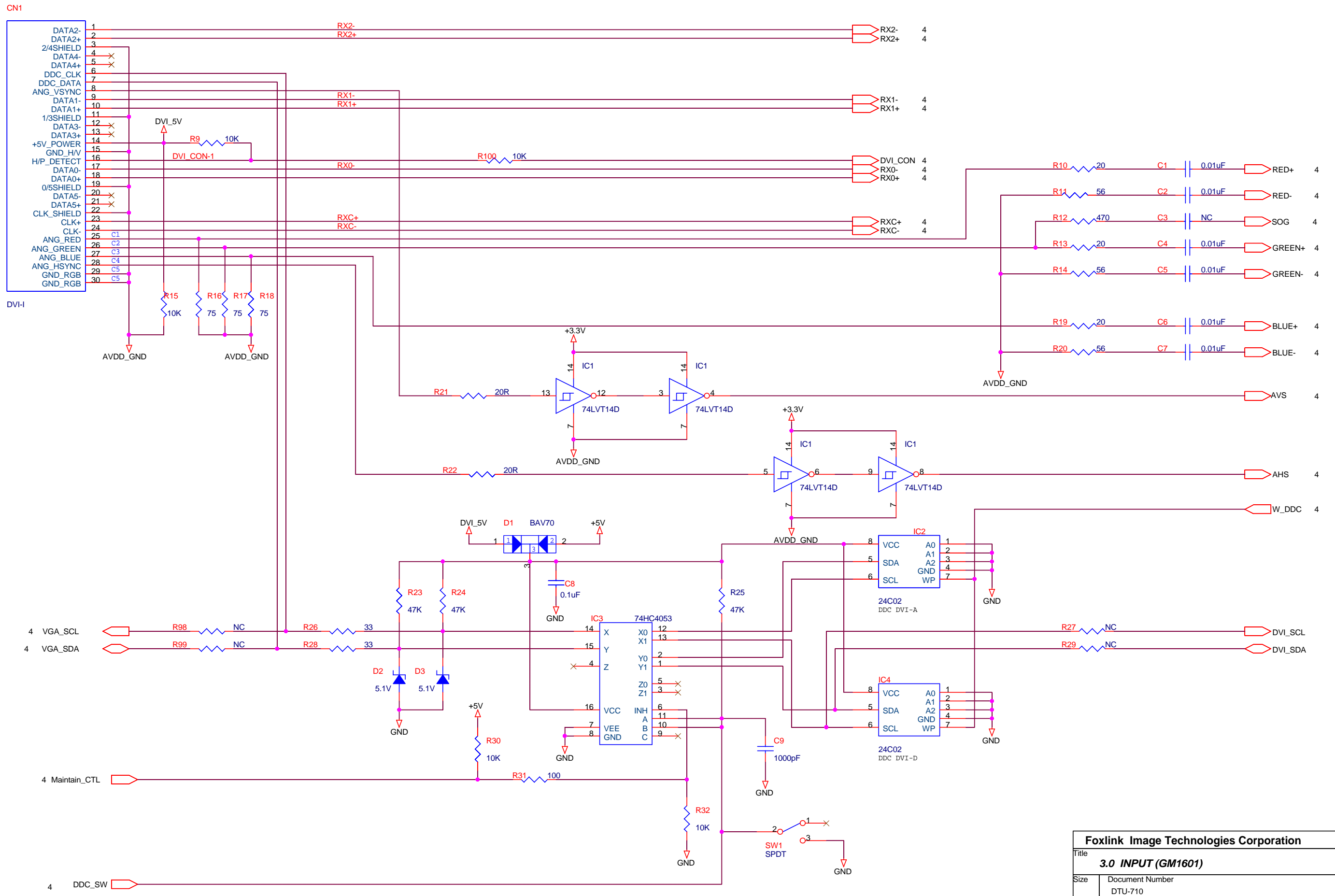
2

1

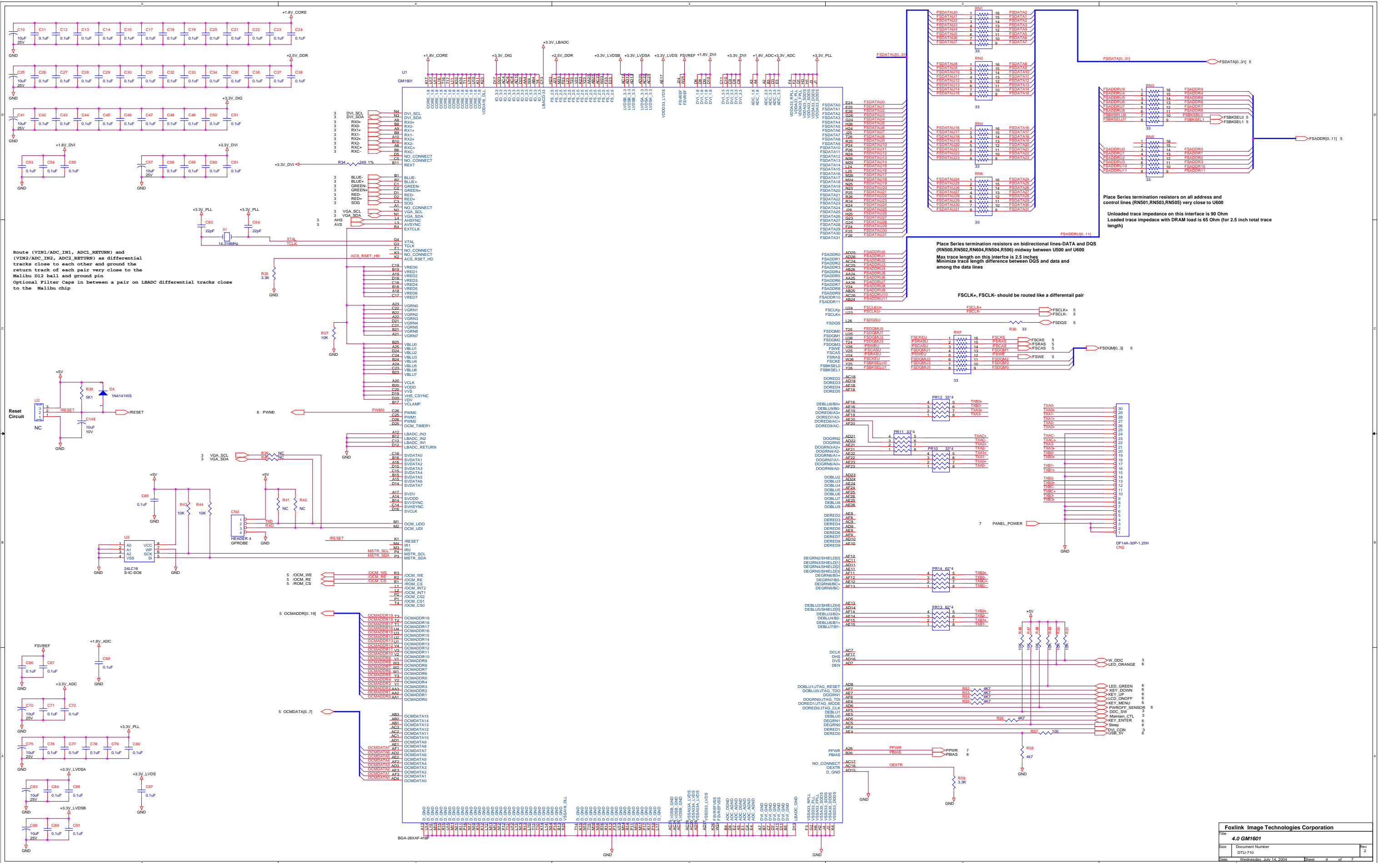


04. gm1601

Foxlink Image Technologies Corporation		
Title 2.0 Top Level		
Size	Document Number DTU-710	Rev 2
Date:	Wednesday, July 14, 2004	Sheet 1 of 7



Foxlink Image Technologies Corporation		
Title 3.0 INPUT (GM1601)		
Size	Document Number DTU-710	Rev 2
Date:	Wednesday, July 14, 2004	Sheet 3 of 7



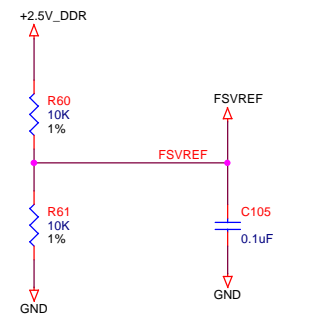
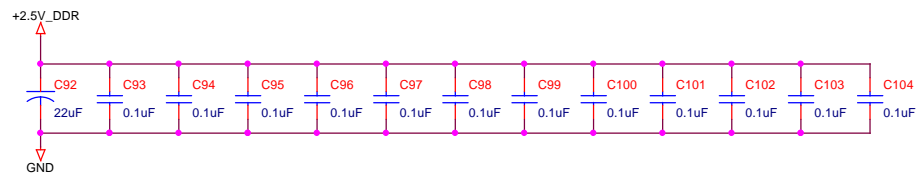
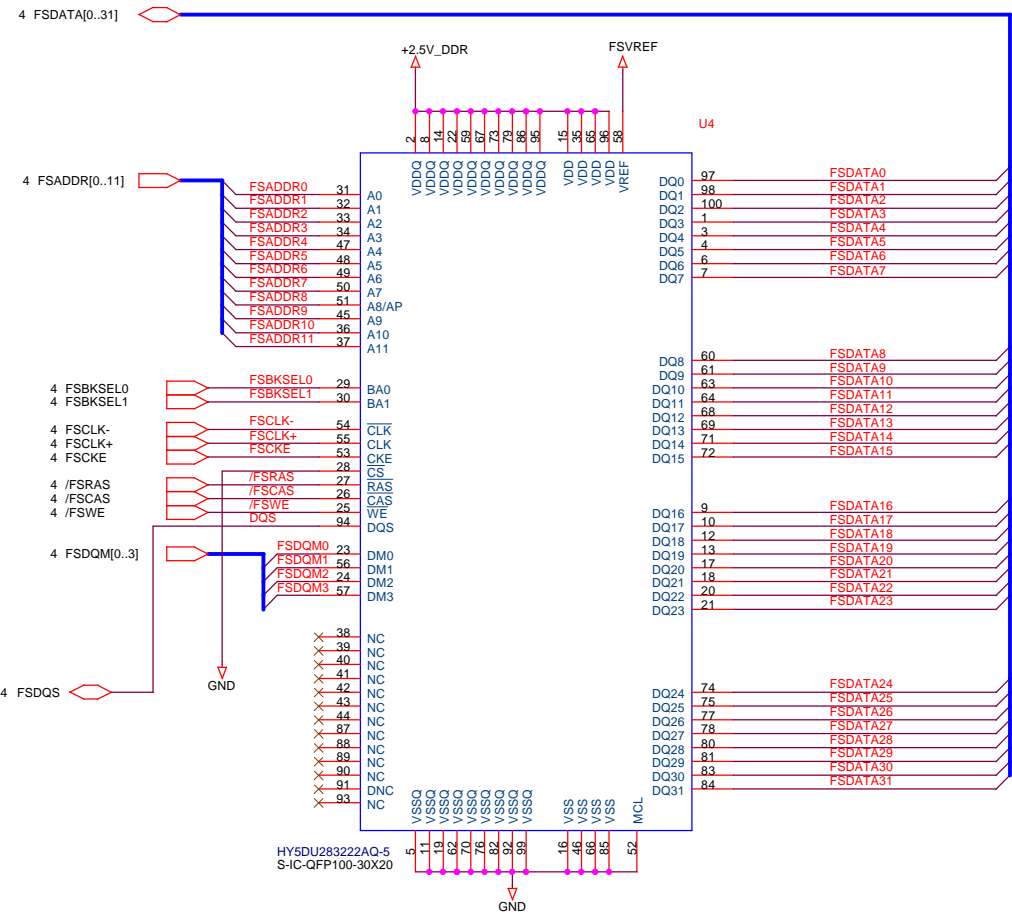
Route (VIN1/ADC_IN1, ADC1_RETURN) and (VIN2/ADC_IN2, ADC2_RETURN) as differential tracks close to each other and ground the return track of each pair very close to the Malibu D12 ball and ground pin. Optional Filter Caps in between a pair on LBADC differential tracks close to the Malibu chip.

Place Series termination resistors on all address and control lines (RNS01,RNS03,RNS05) very close to U600

Unloaded trace impedance on this interface is 90 Ohm. Loaded trace impedance with DRAM load is 65 Ohm (for 2.5 inch total trace length)

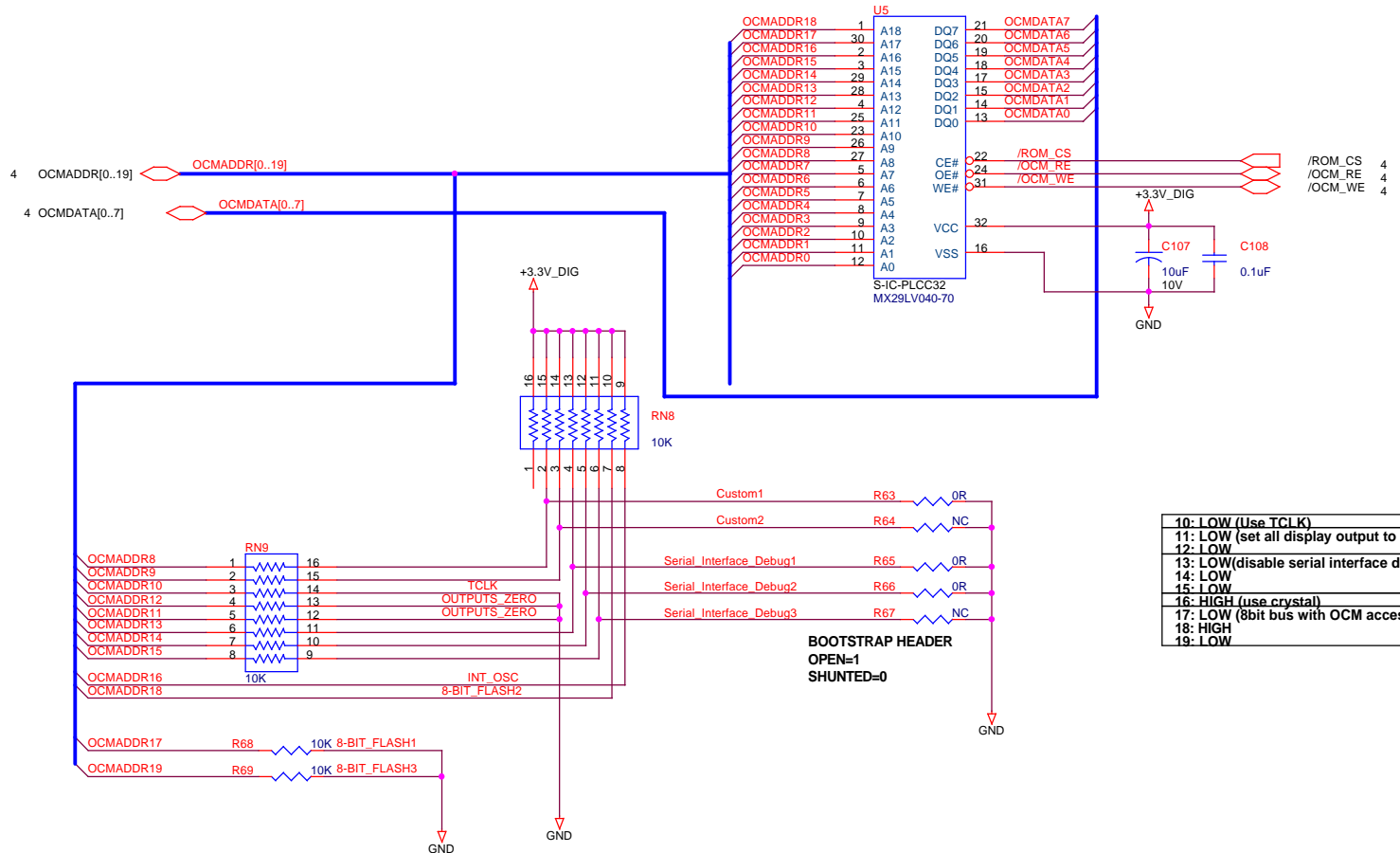
Place Series termination resistors on bidirectional lines-DATA and DQS (RNS00,RNS02,RNS04,RNS04-RS06) midway between U500 and U600. Max trace length on this interface is 2.5 inches. Minimize trace length difference between DQS and data and among the data lines.

FSCLK+, FSCLK- should be routed like a differential pair

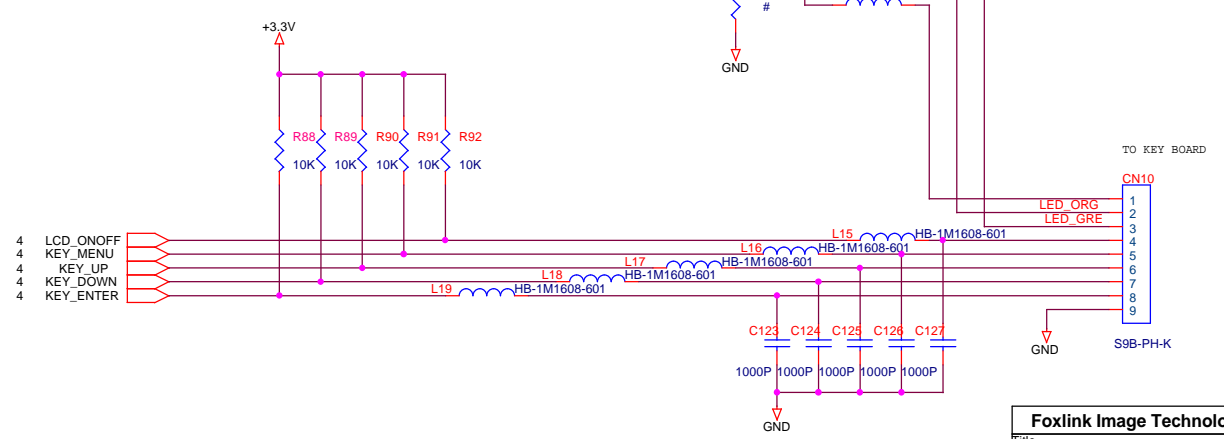
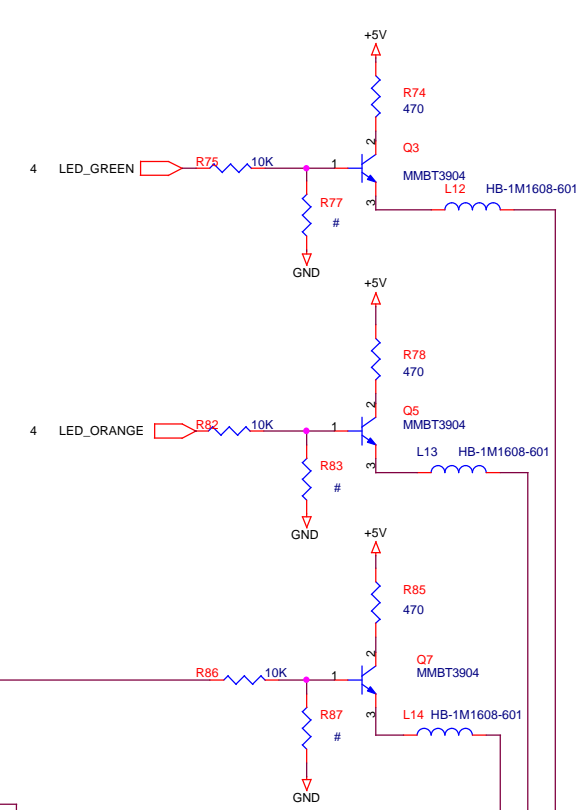
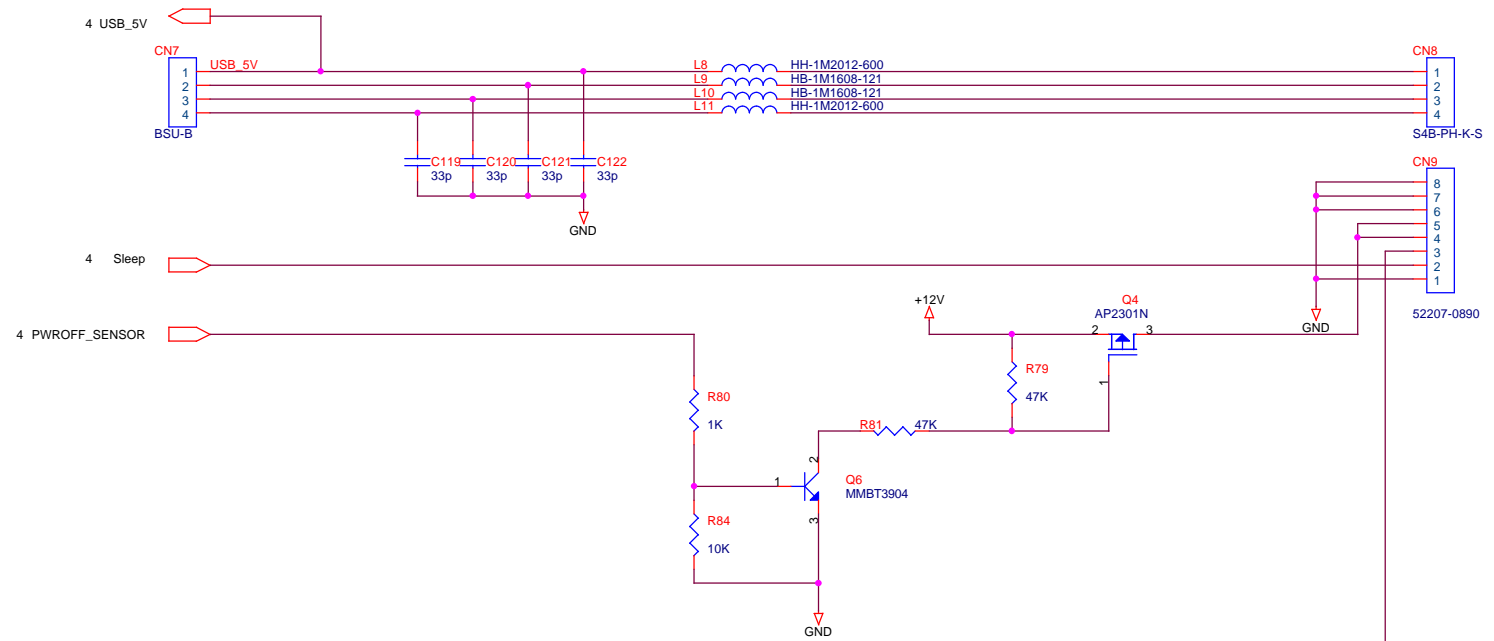
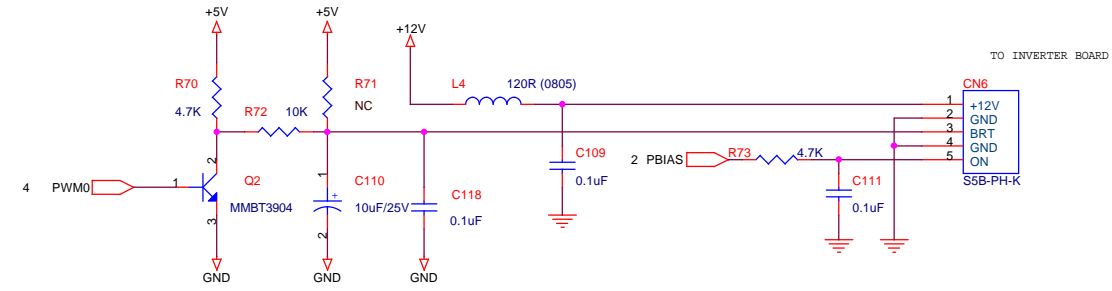
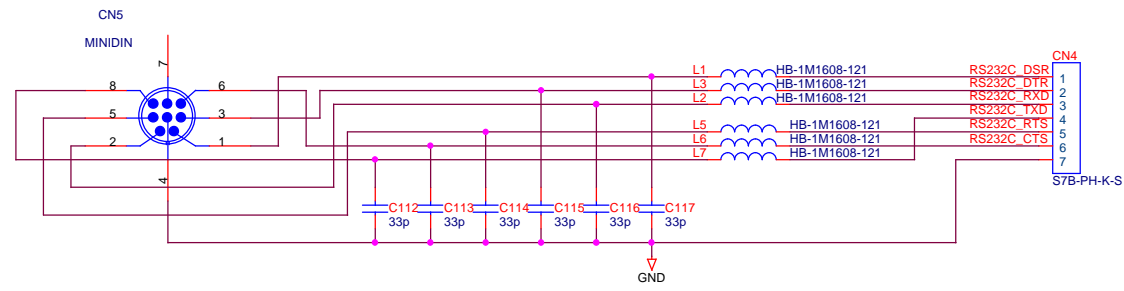


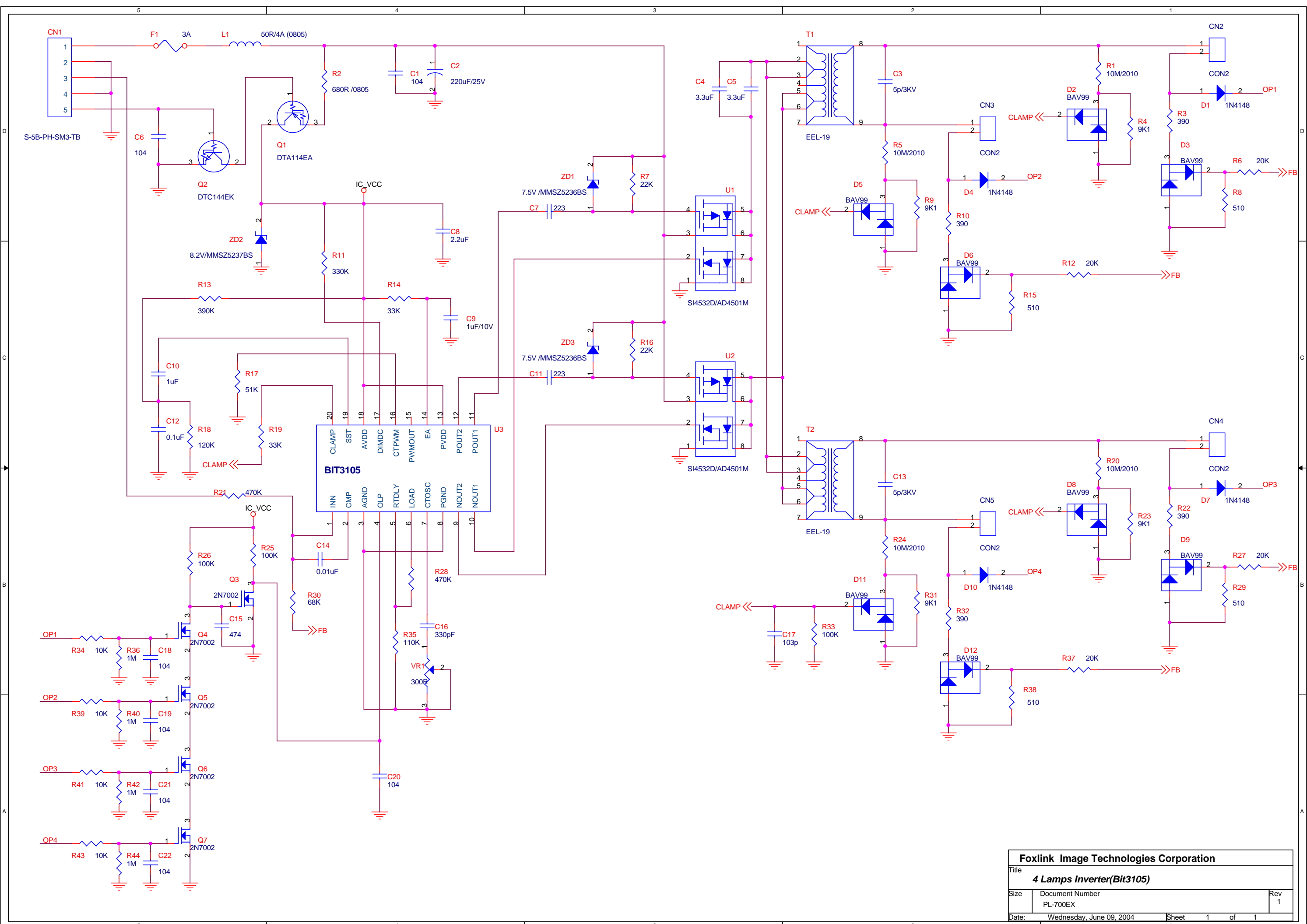
Place R602 termination close to corresponding U600 Pins

Socket for a X8 Flash (64/128/256/512K) and PROMJETmemory Emulator

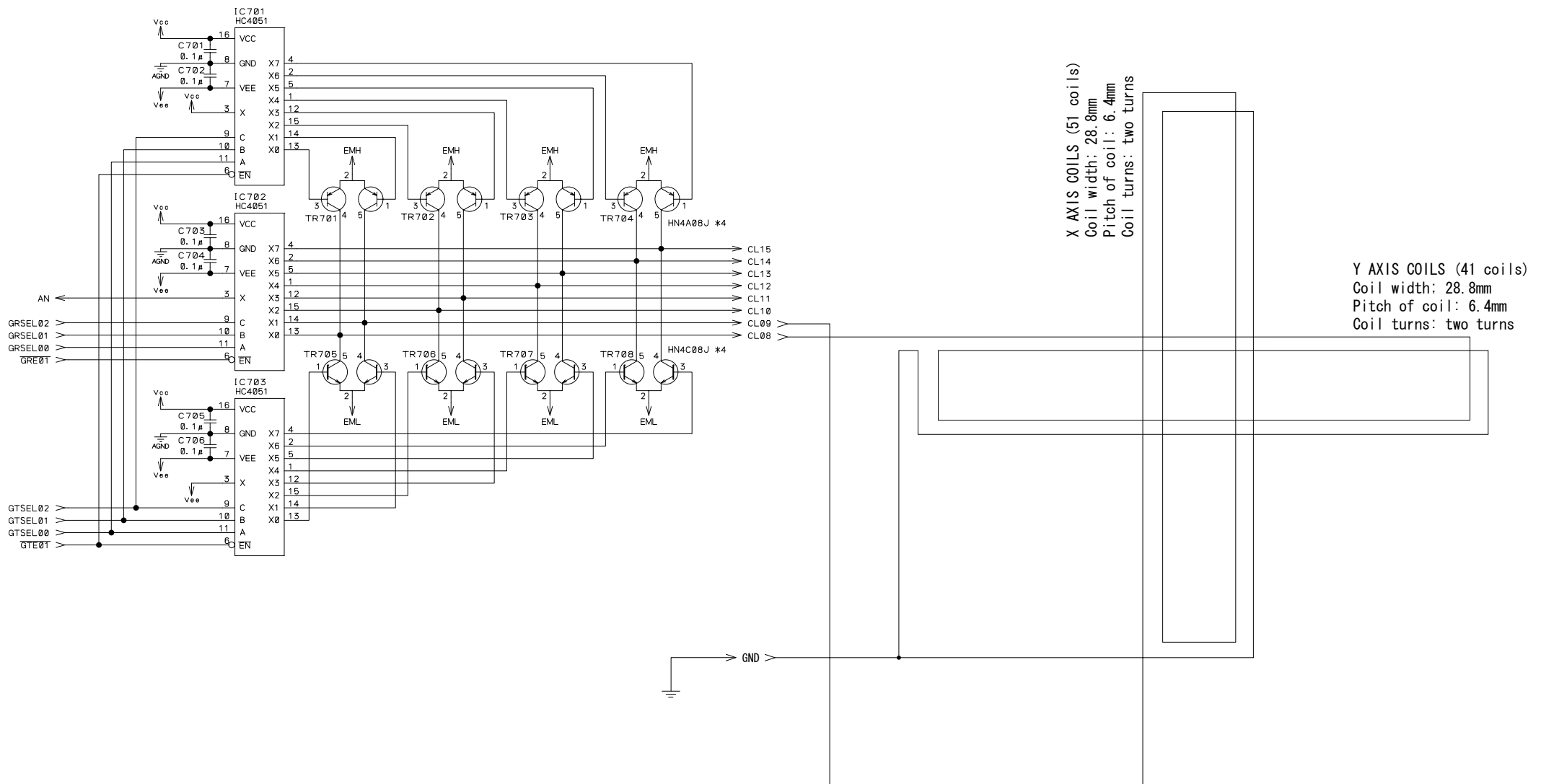


10: LOW (Use TCLK)
11: LOW (set all display output to '0')
12: LOW
13: LOW (disable serial interface debug)
14: LOW
15: LOW
16: HIGH (use crystal)
17: LOW (8bit bus with OCM access external ROM)
18: HIGH
19: LOW





Foxlink Image Technologies Corporation		
Title 4 Lamps Inverter(Bit3105)		
Size	Document Number PL-700EX	Rev 1
Date:	Wednesday, June 09, 2004	Sheet 1 of 1



< DTU-710 Sensor Interface Schematic Diagram >