

EUT Internal Photos

Figure 10

Internal View (Removed Front Frame, LCD Panel/Front View)



Figure 11

Internal View (Switch Control Board, Front View)

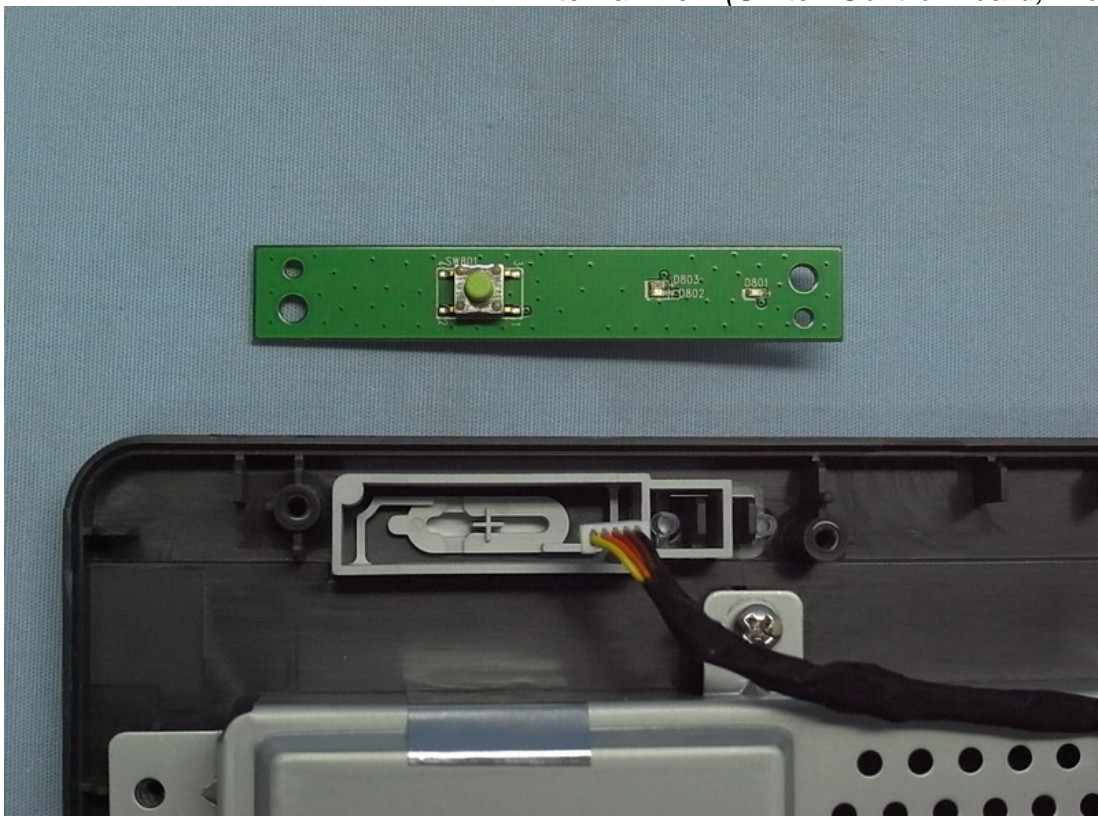


Figure 12
Internal View (Switch Control Board, Back View)



Figure 13
Internal View (Control Board, Front View)

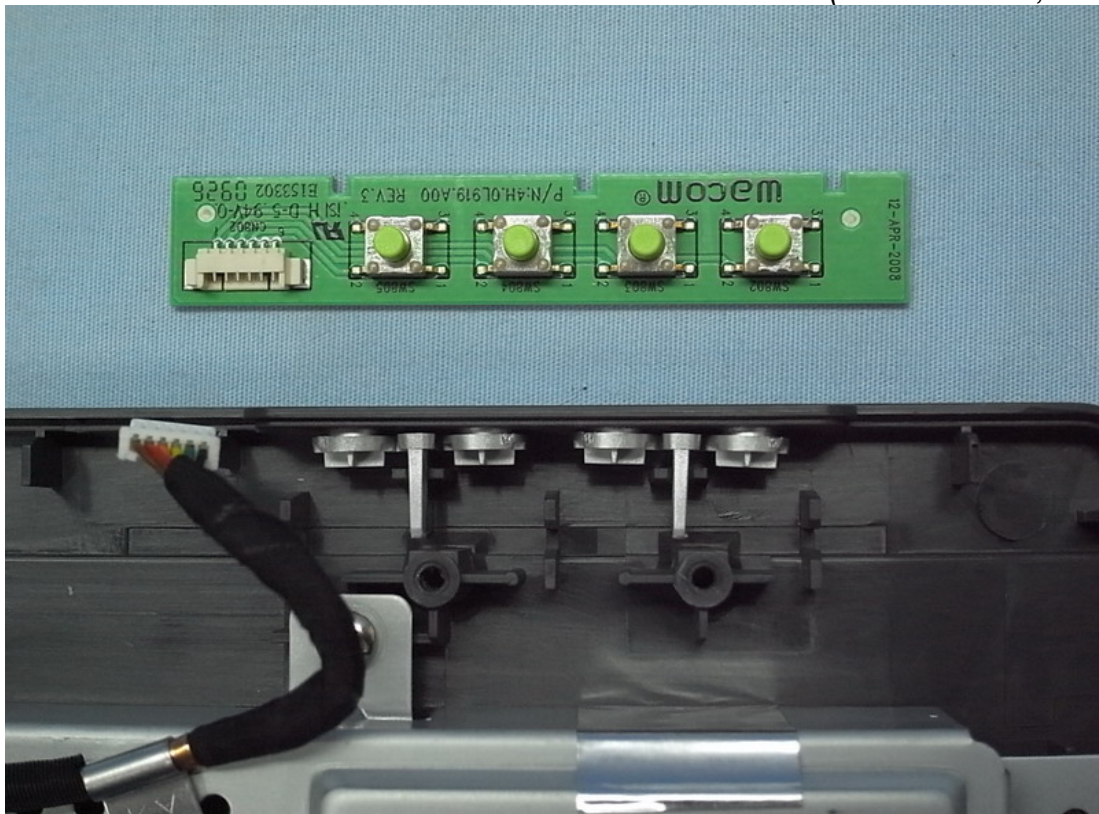


Figure 14
Internal View (Control Board, Back View)

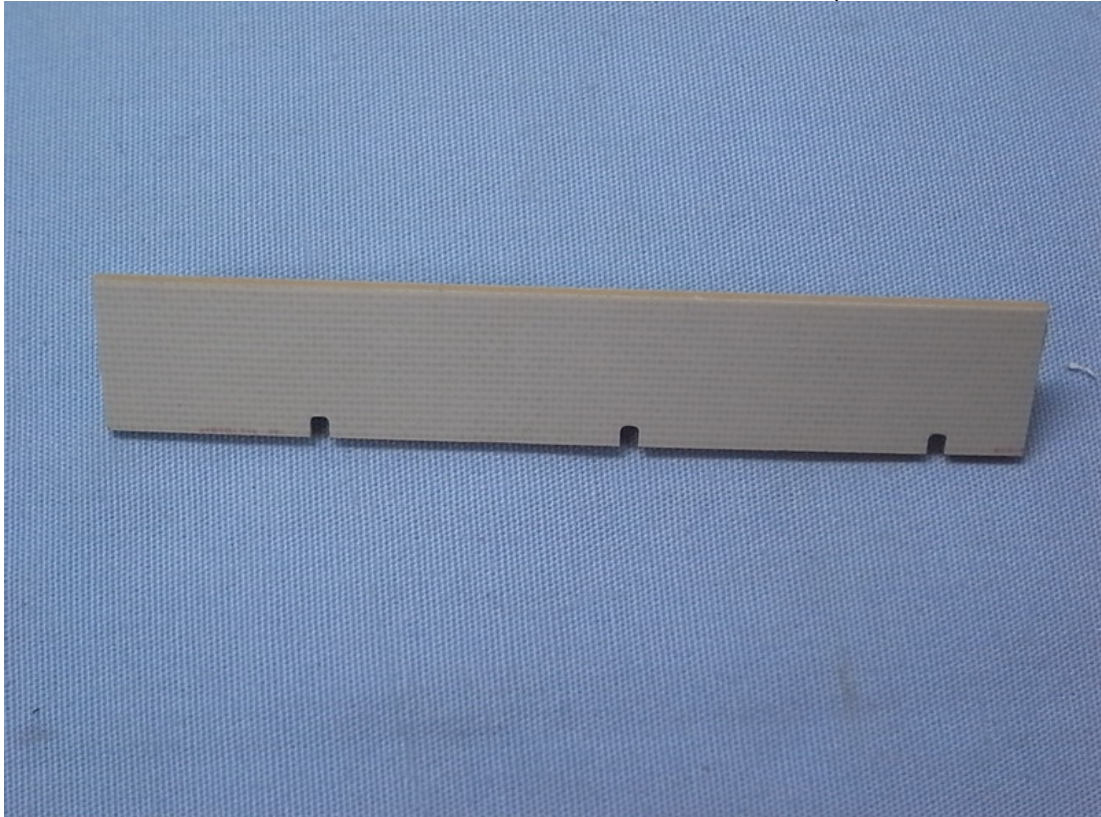


Figure 15
Internal View (Back Cover Removed)

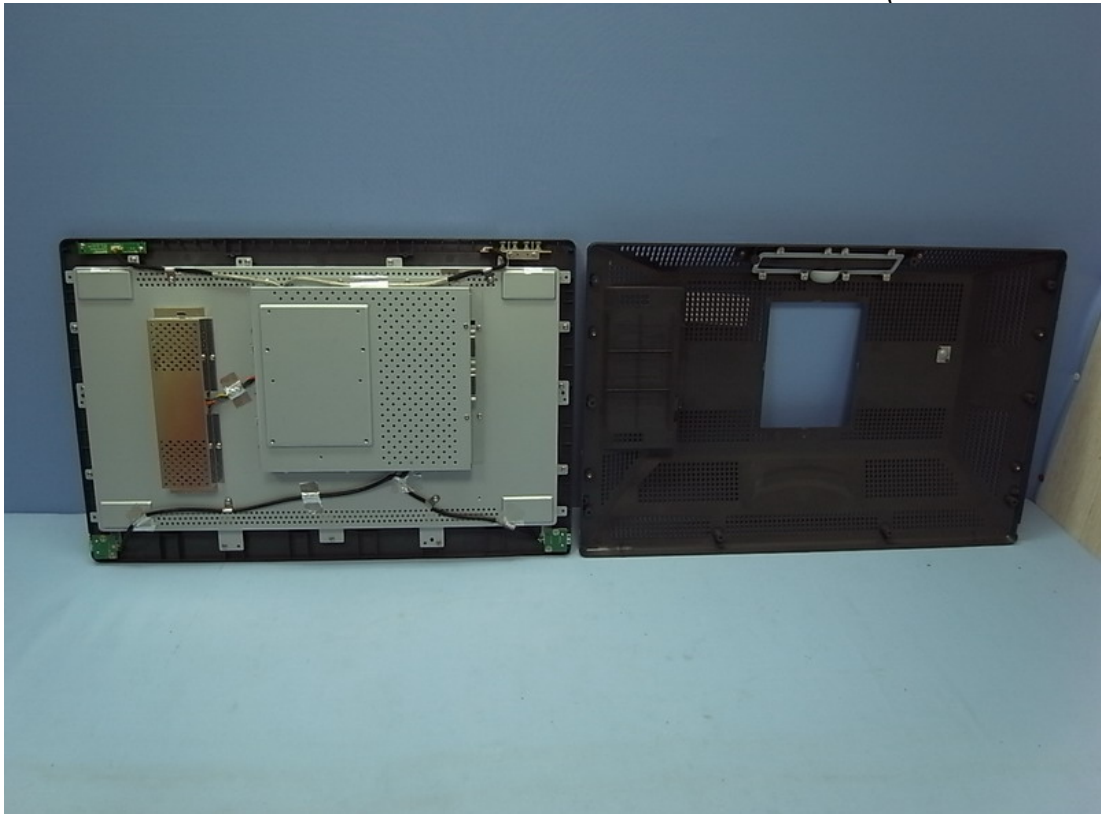


Figure 16
Internal View (USB Boards, Front View)

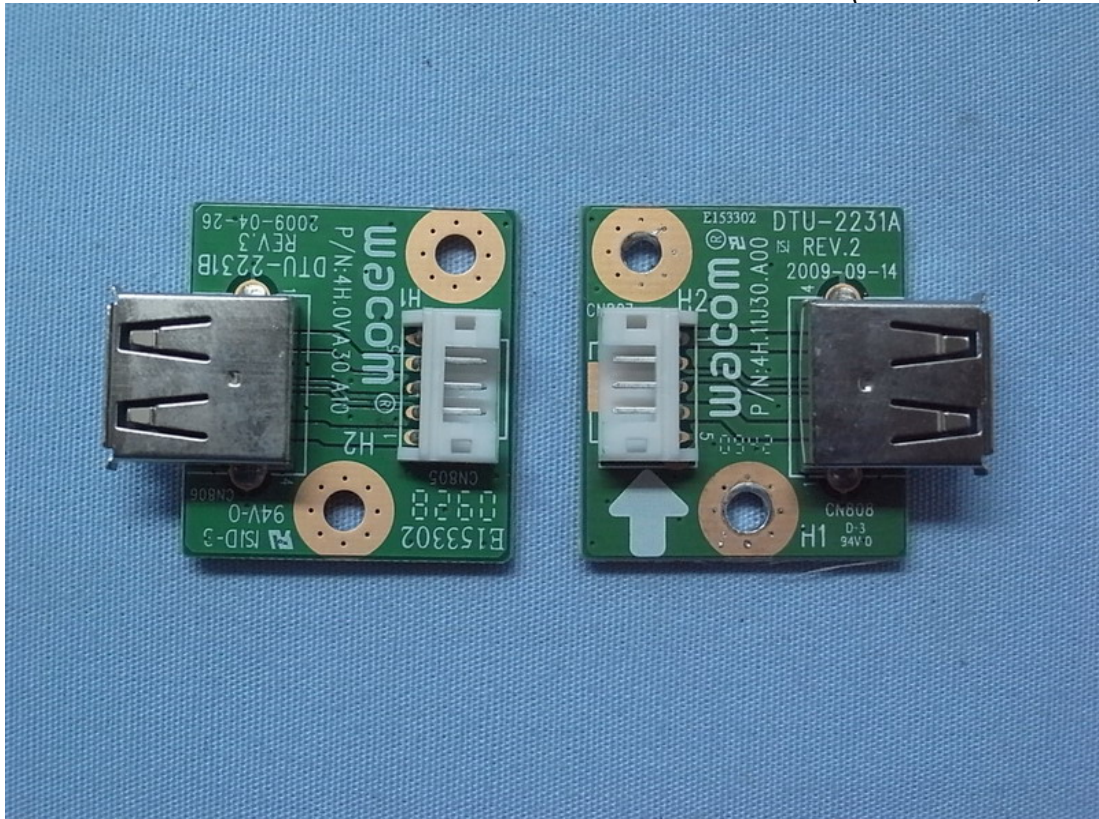


Figure 17
Internal View (USB Boards, Back View)

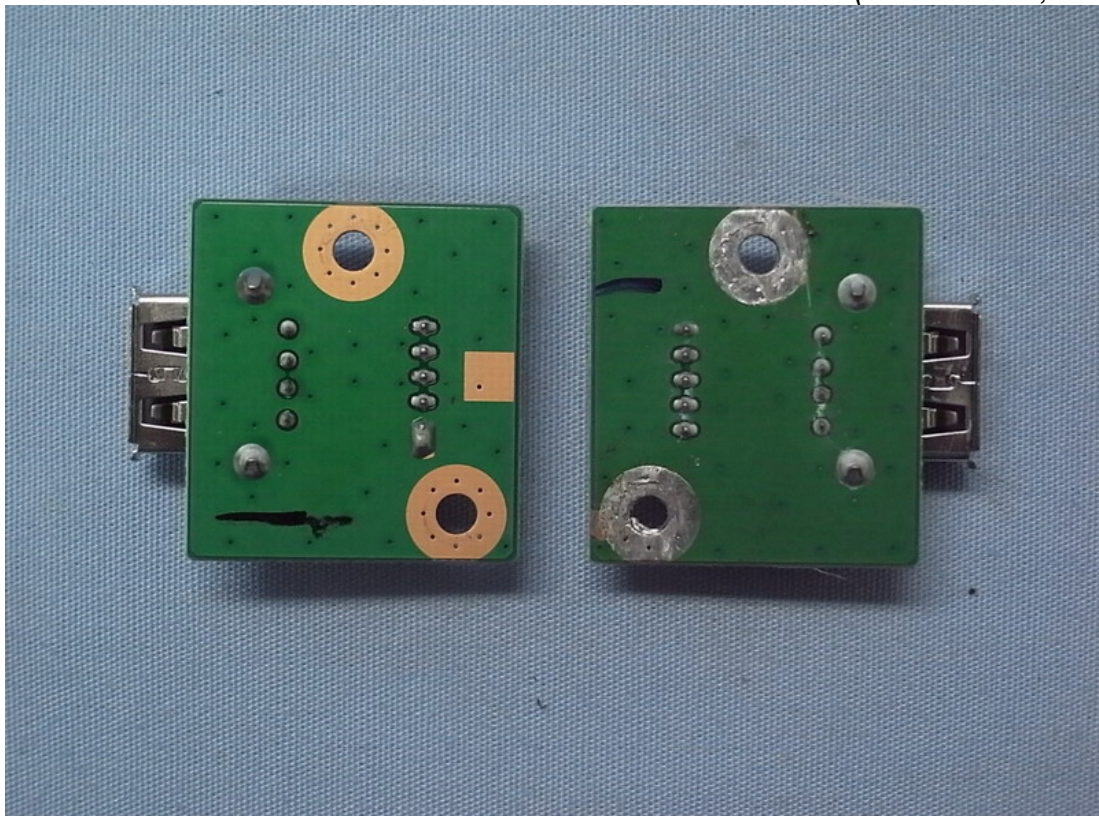


Figure 18
Internal View (Removed Metal Covers)

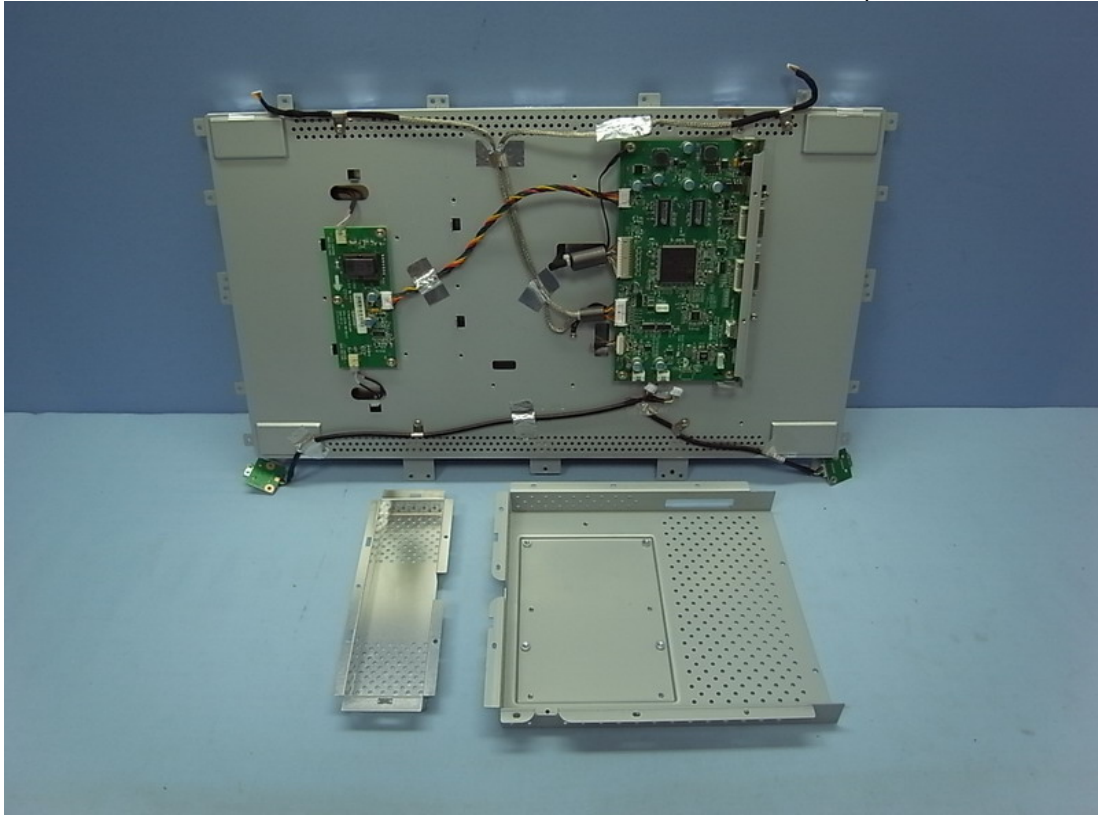


Figure 19
Internal View (Removed Main Board & Inverter Board)

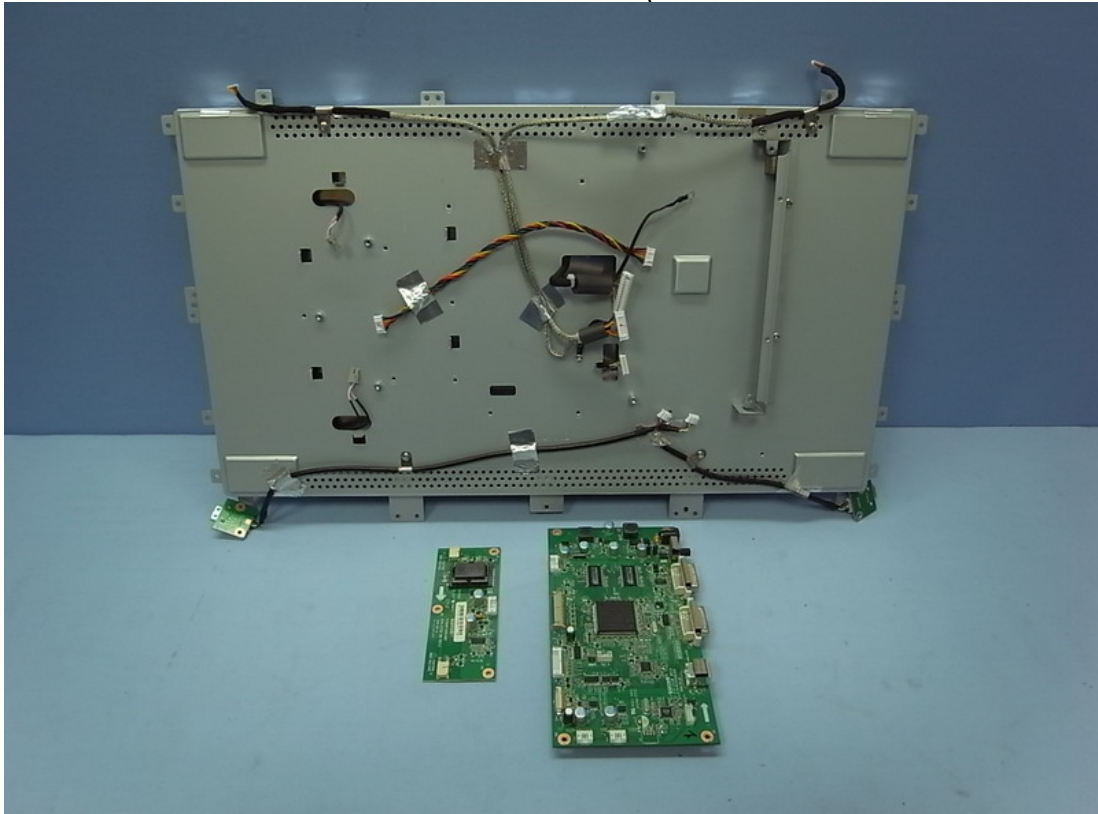


Figure 20
Internal View (Main Board, Front View)

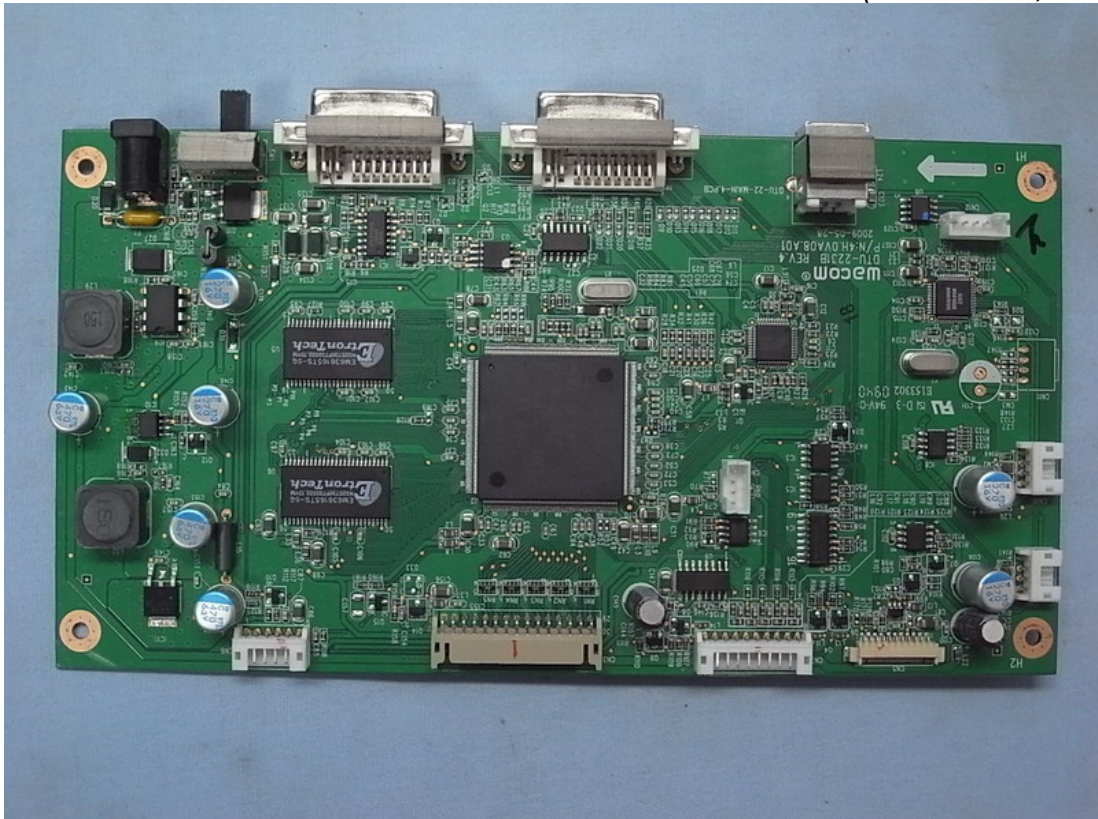


Figure 21
Internal View (Main Board, Back View)

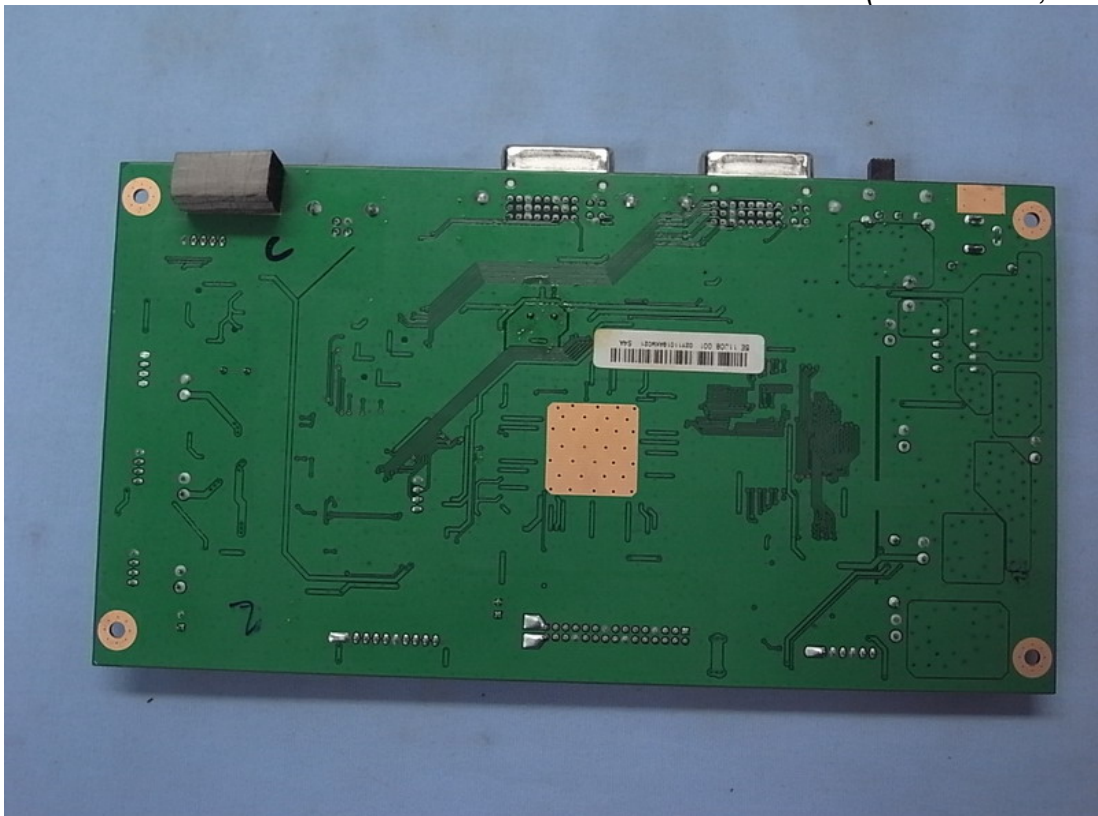


Figure 22
Internal View (Inverter Board, Front View)

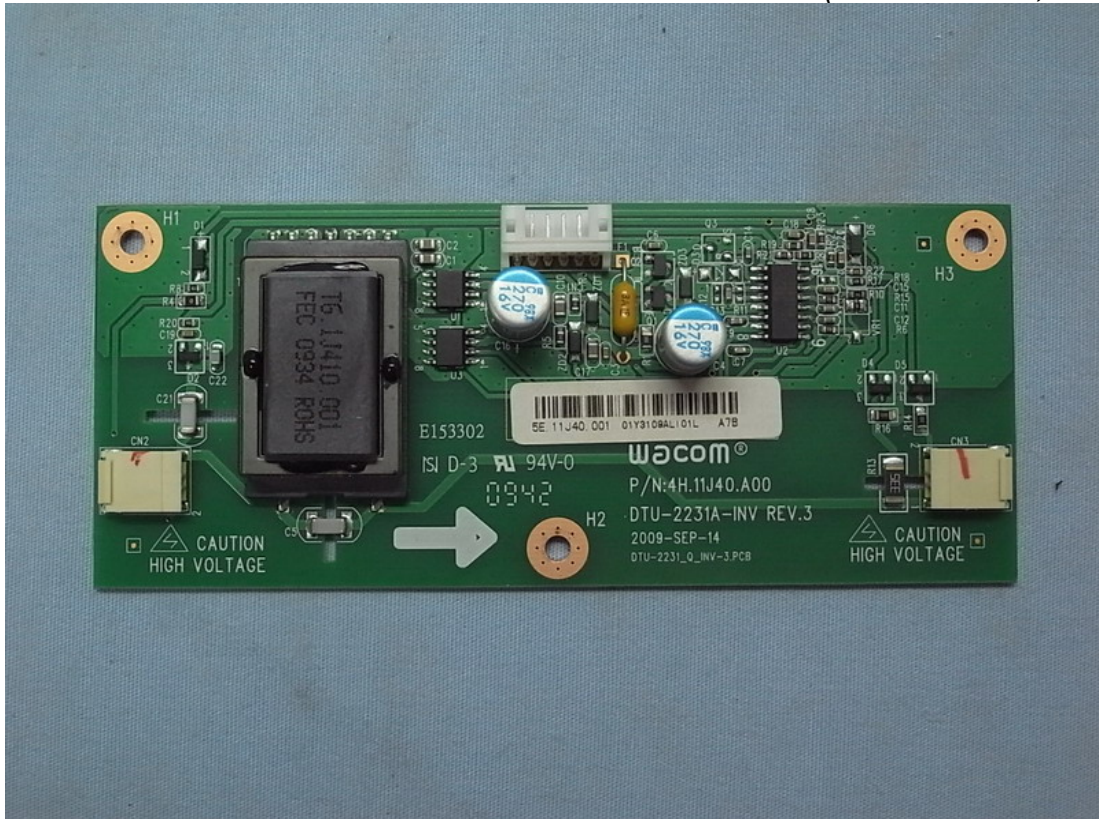


Figure 23
Internal View (Inverter Board, Back View)

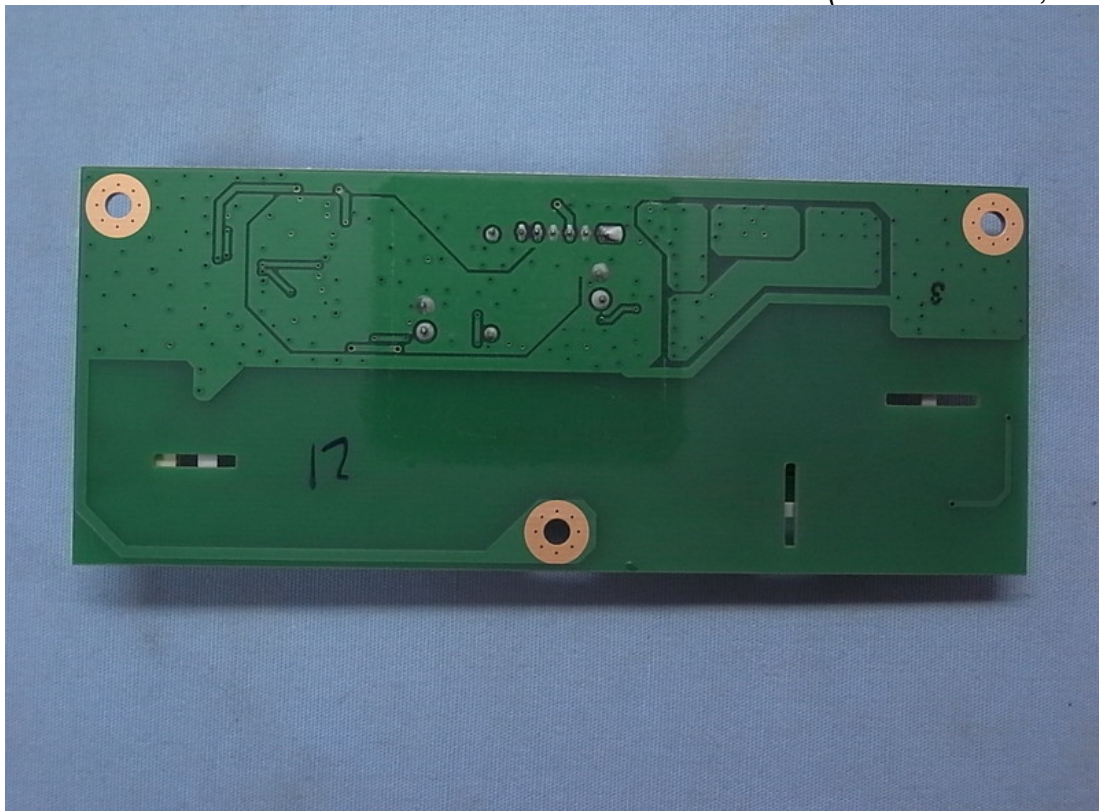


Figure 24
Internal View (LCD Panel, Back View)

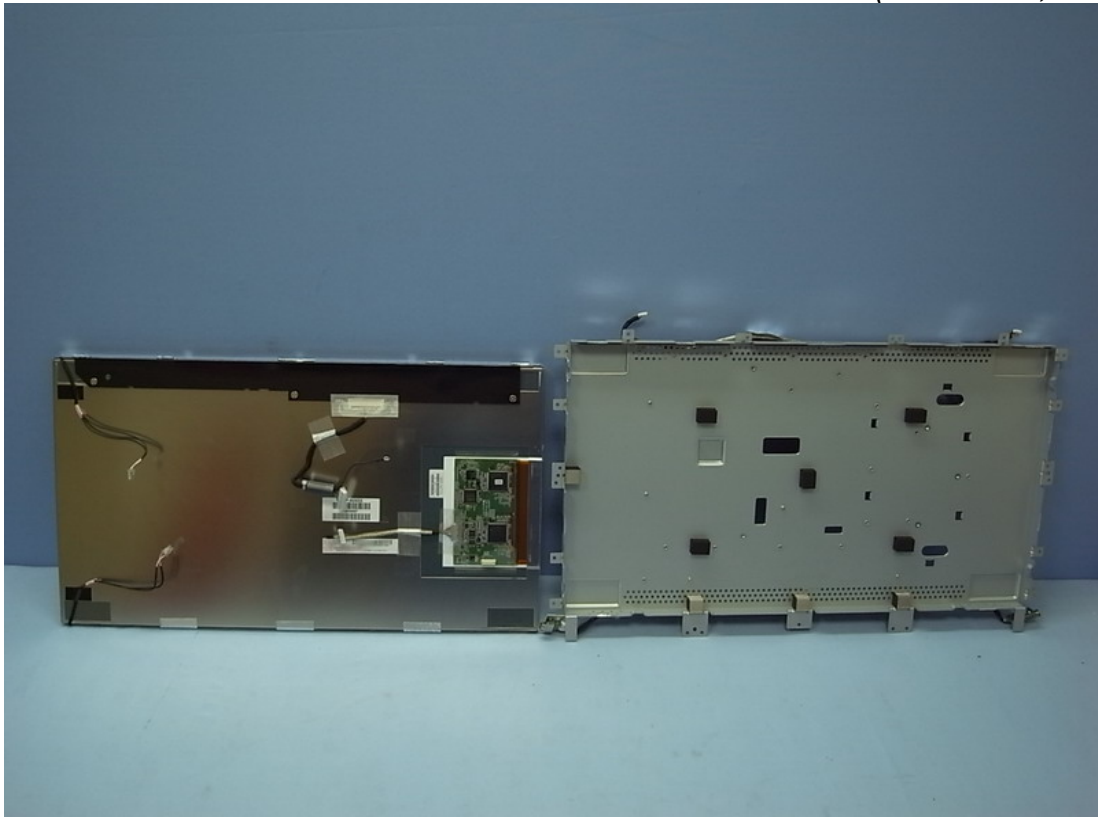


Figure 25
Internal View (Touch Board, Front View)

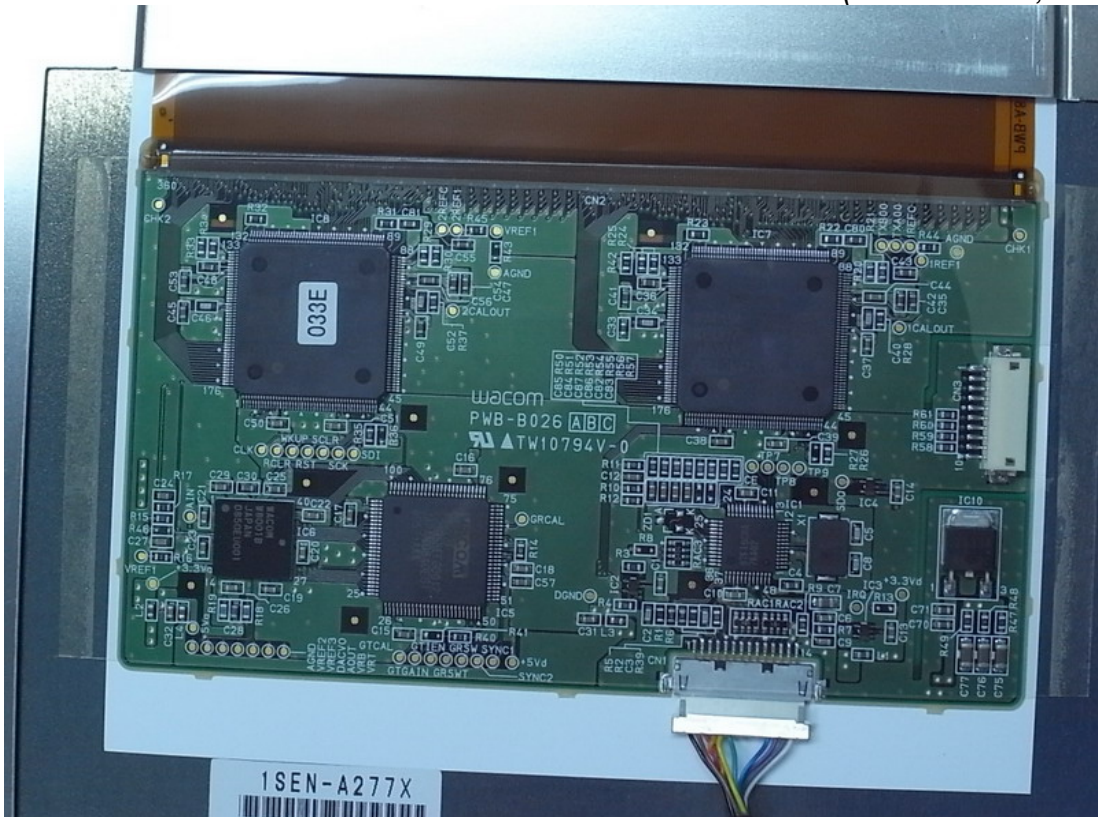


Figure 26
Internal View (Touch Board, Back View)

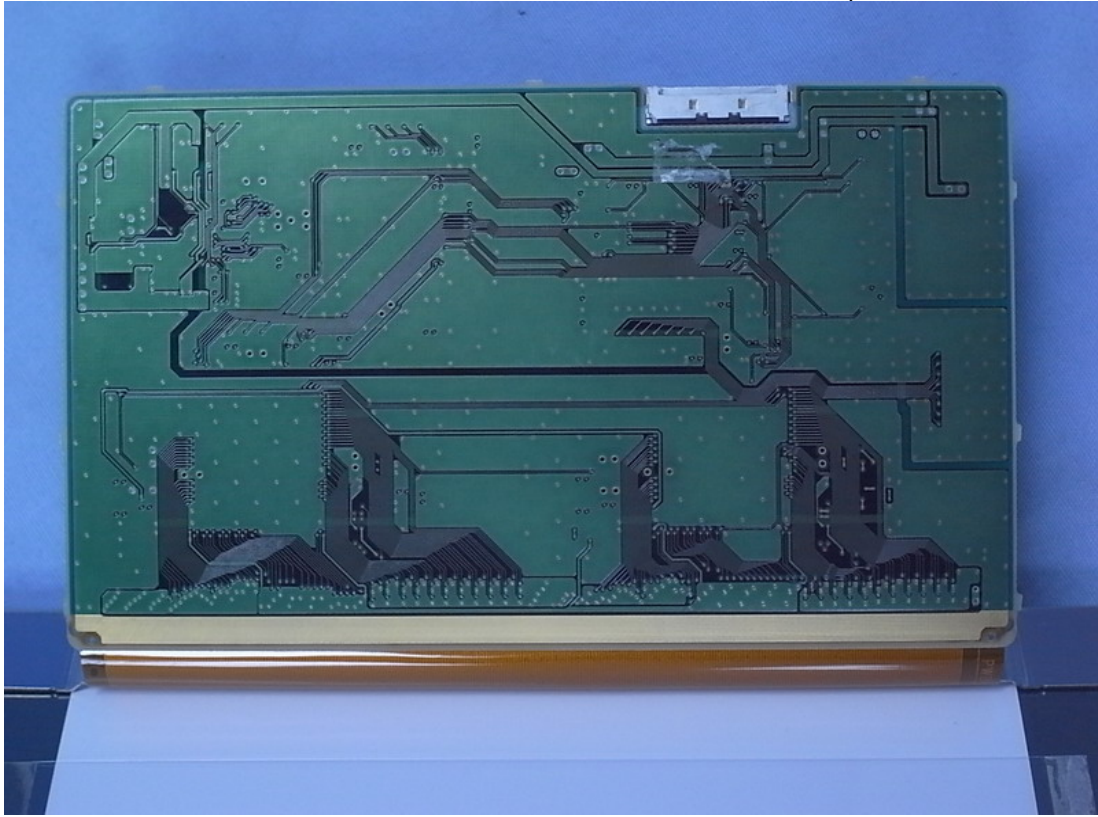


Figure 27
Internal View (LVDS Board, Front View)

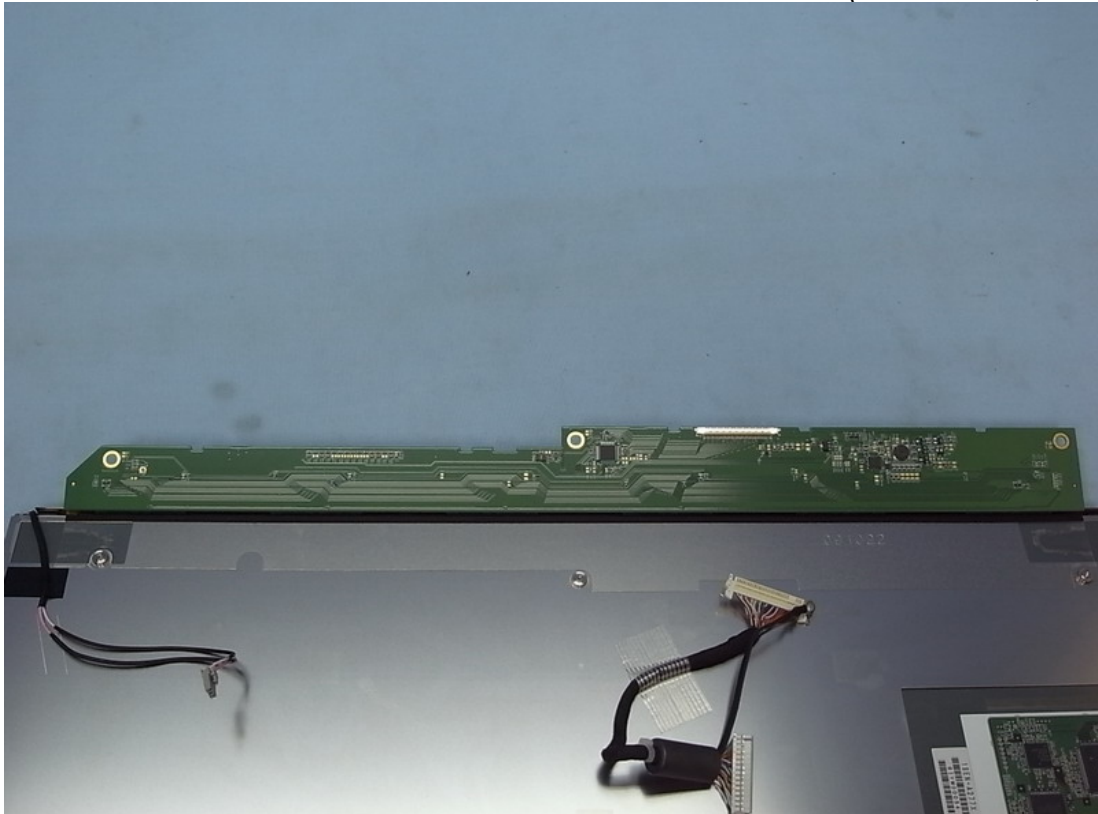


Figure 28
Internal View (LVDS Board, Back View)

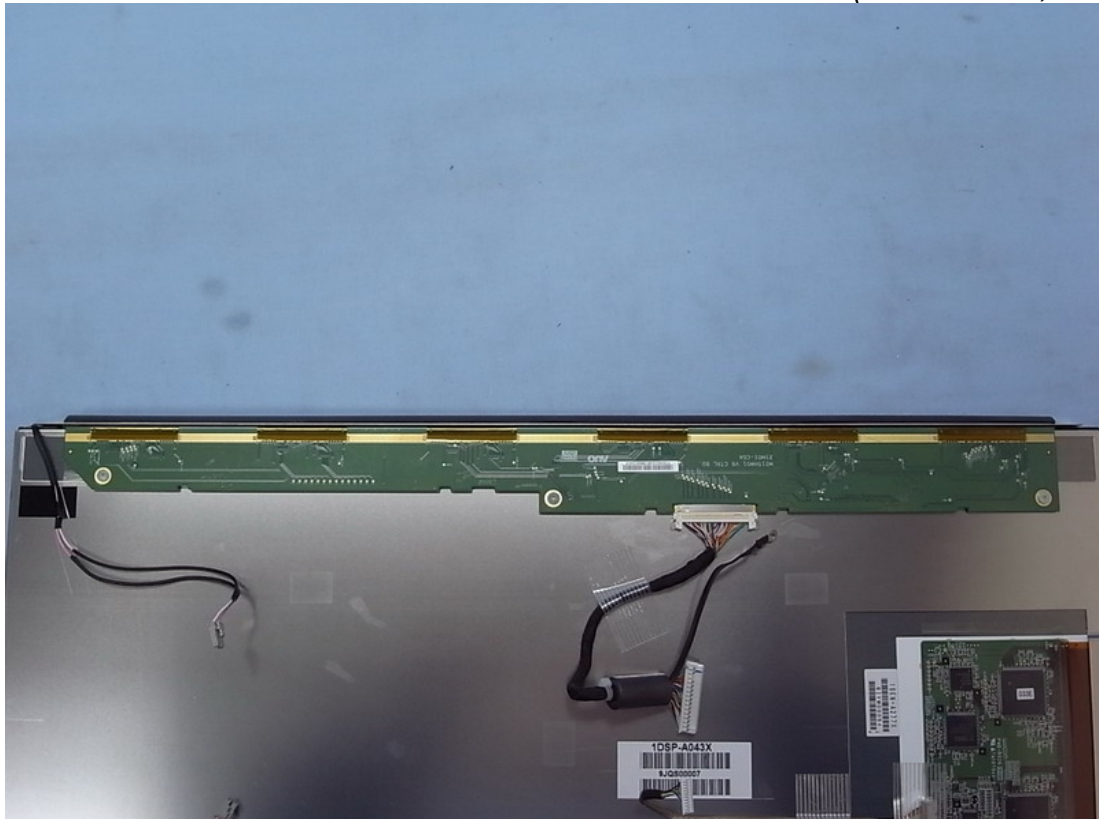
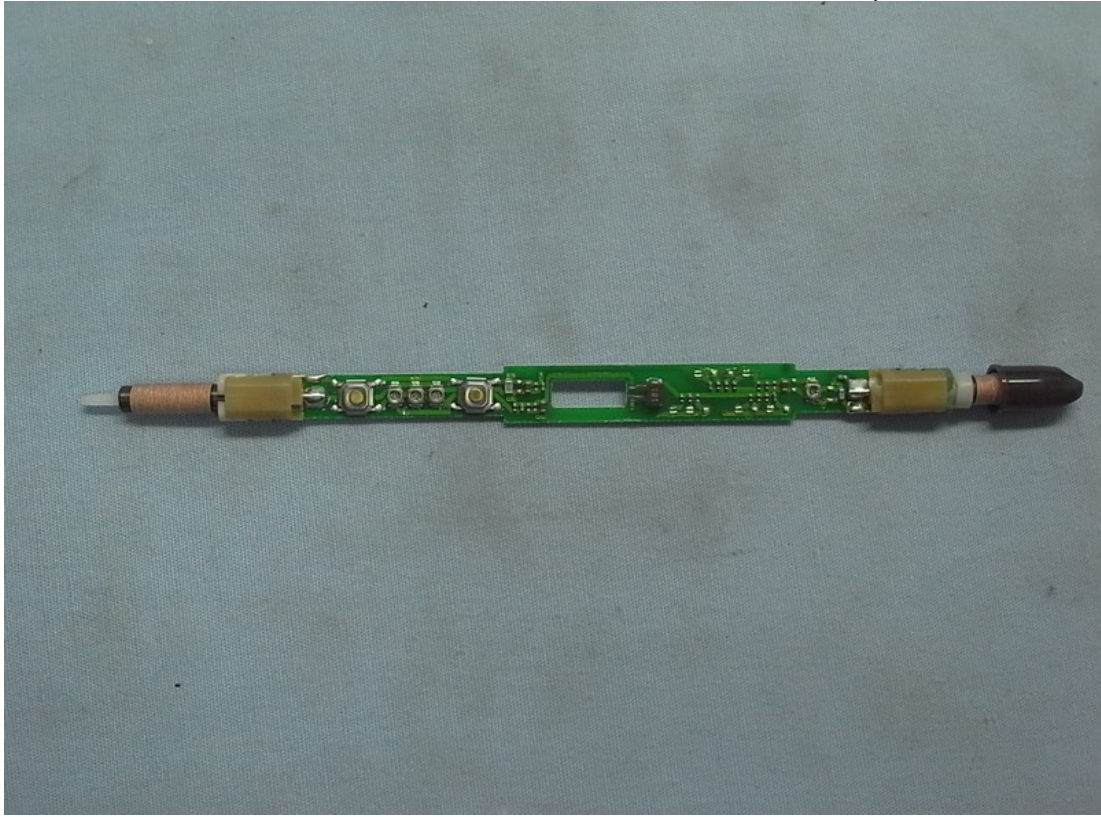


Figure 29
Pen, Internal View (Removed Cover)



*Figure 30
Pen, Internal View (TX Module, Front View)*



*Figure 31
Pen, Internal View (TX Module, Back View)*

