

EUT Internal Photos

Figure 9
Internal View (Removed Back Cover)

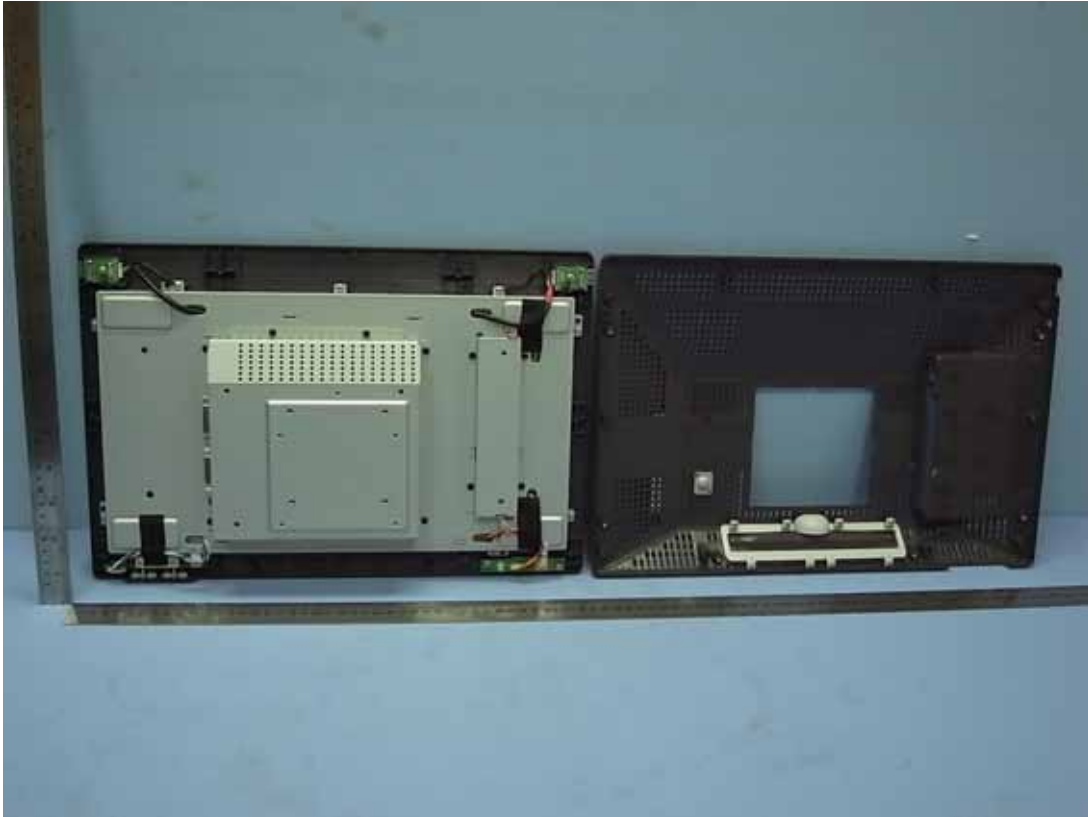


Figure 10
Internal View



Figure 11
Internal View (Removed Front Frame, LCD Panel, Front View)



Figure 12
Internal View



Figure 13
Internal View (Switch Control Board, Front View)

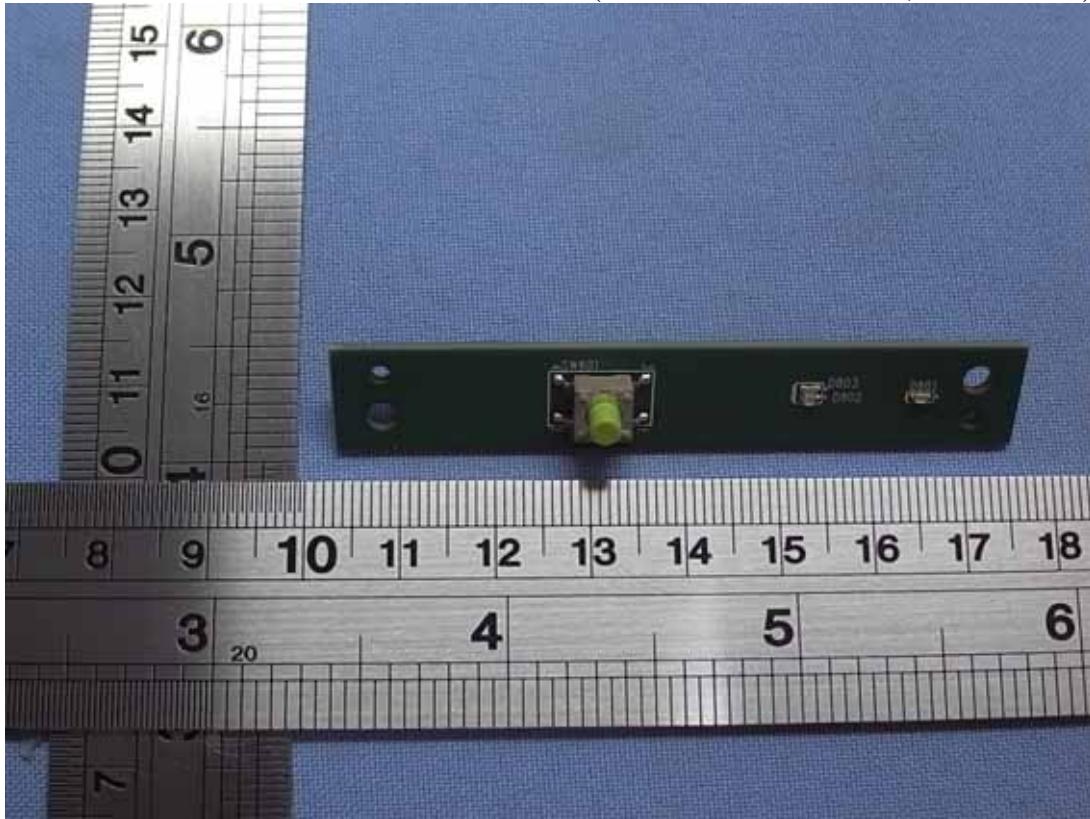


Figure 14
Internal View (Switch Control Board, Back View)

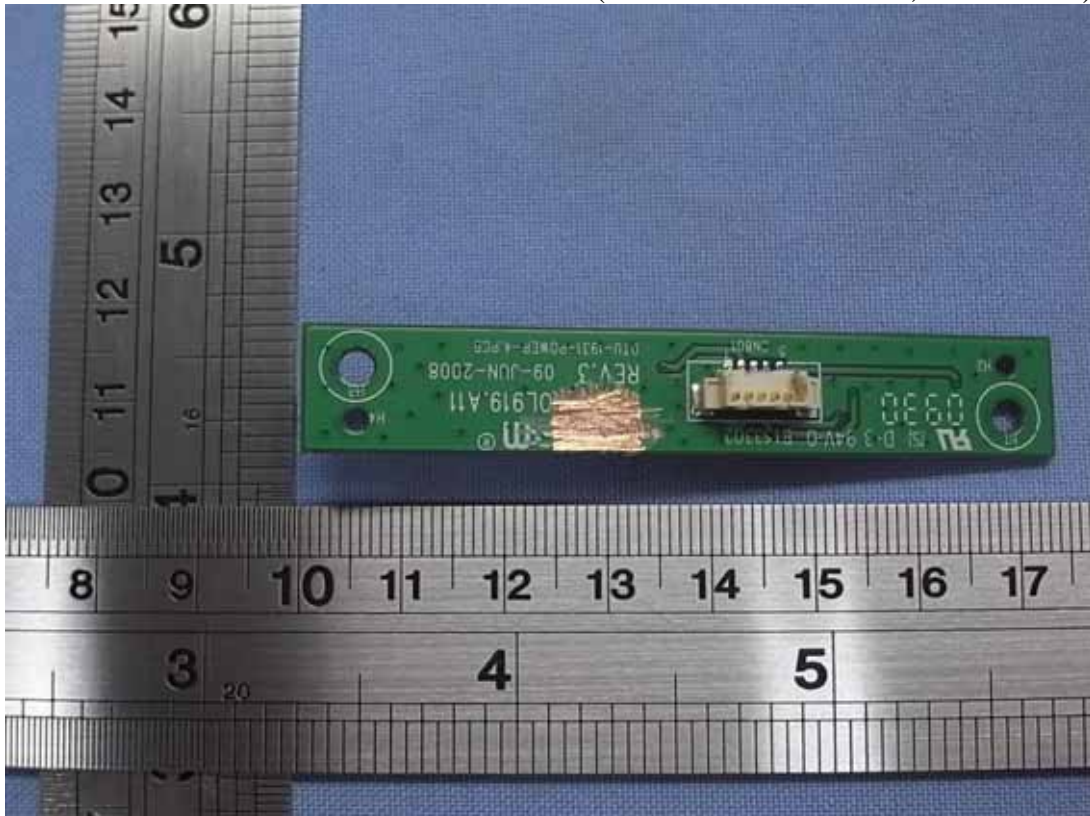


Figure 15
Internal View (Switch Control Board, Front View)

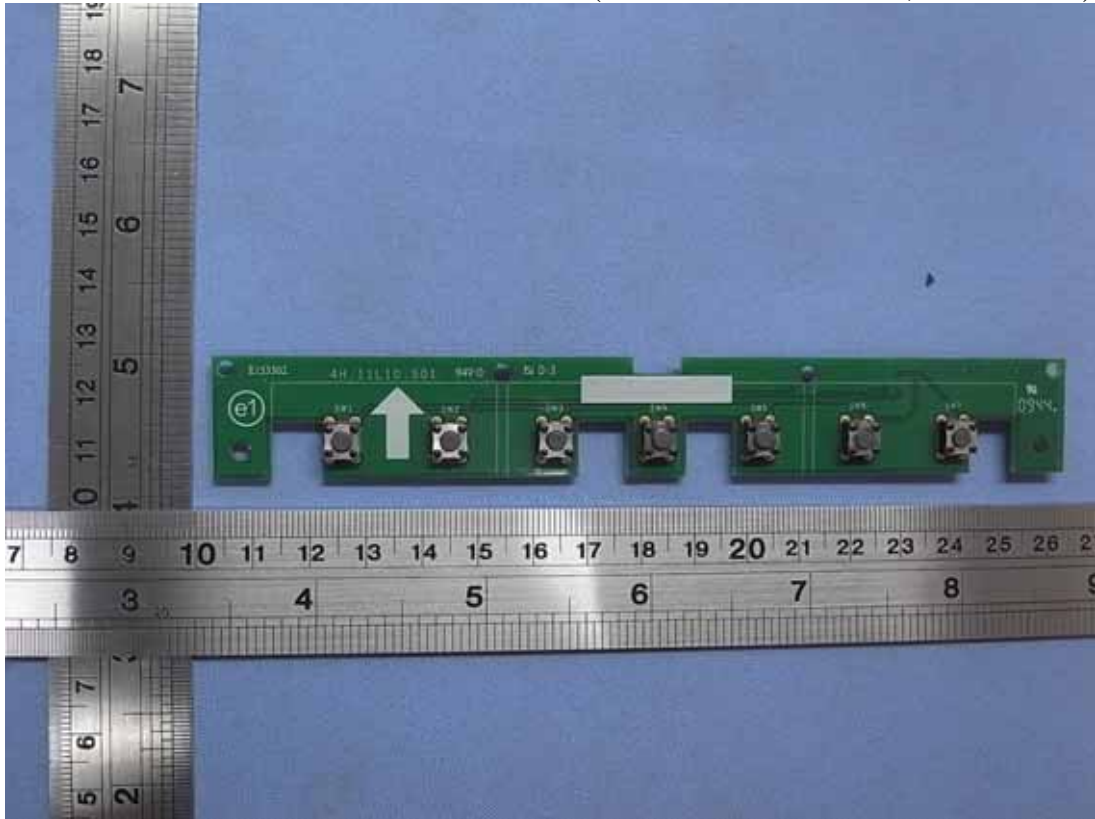


Figure 16
Internal View (Switch Control Board, Back View)

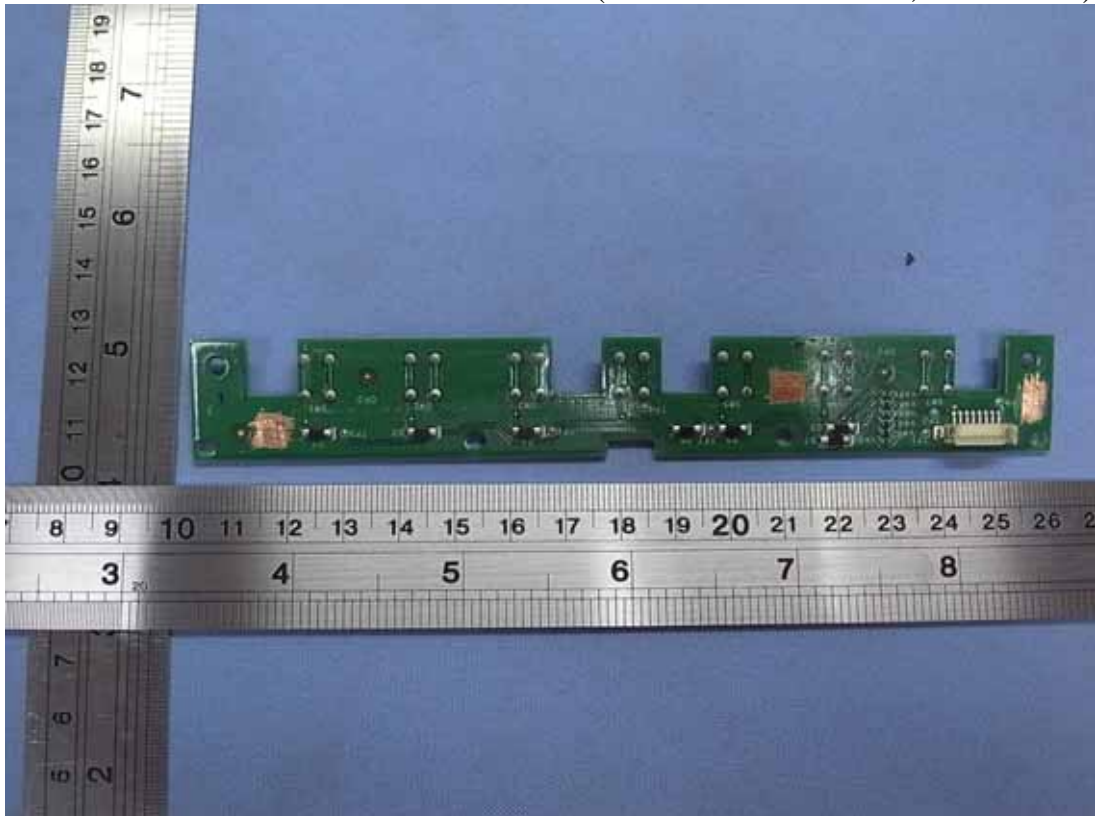


Figure 17
Internal View (Switch Control Board, Front View)

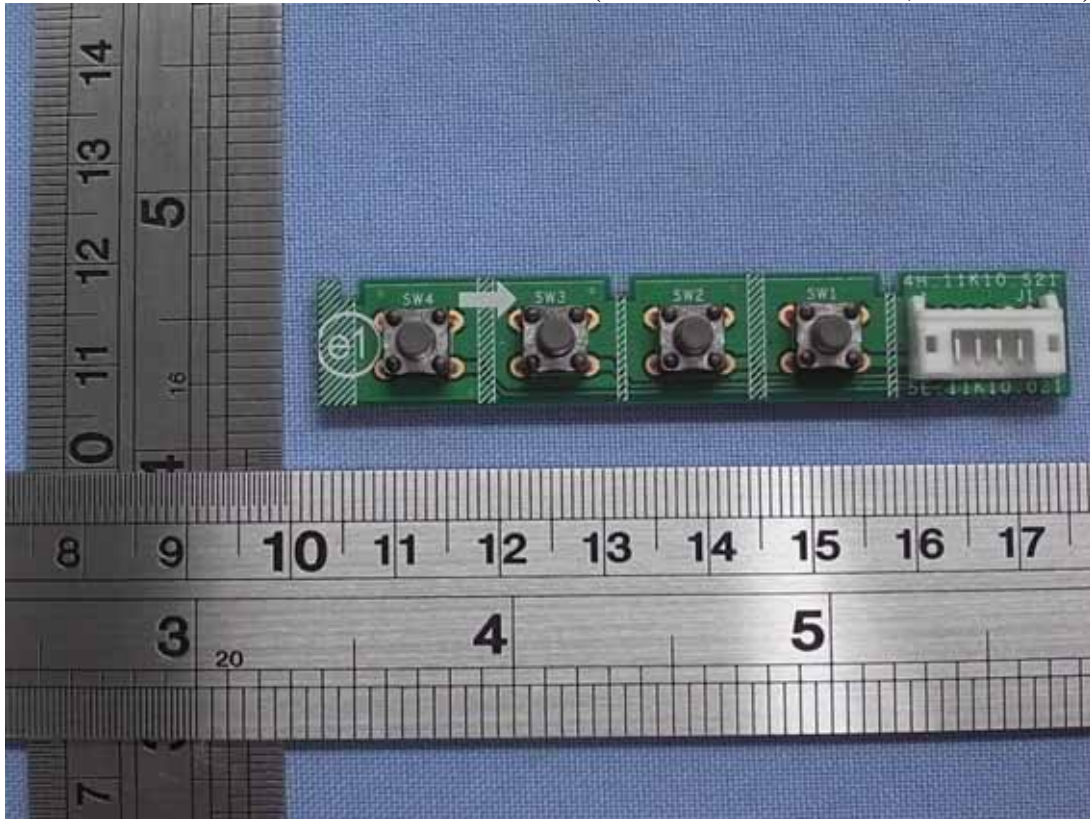


Figure 18
Internal View (Switch Control Board, Back View)

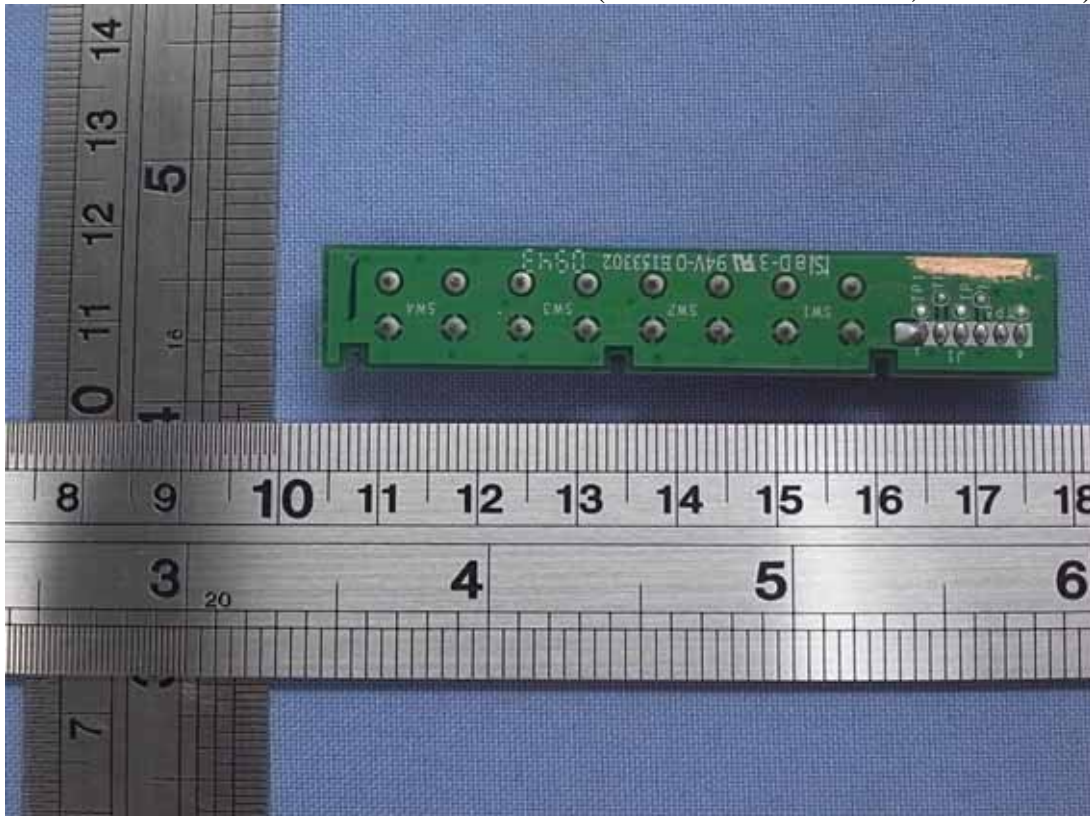


Figure 19
Internal View (USB Board, Front View)

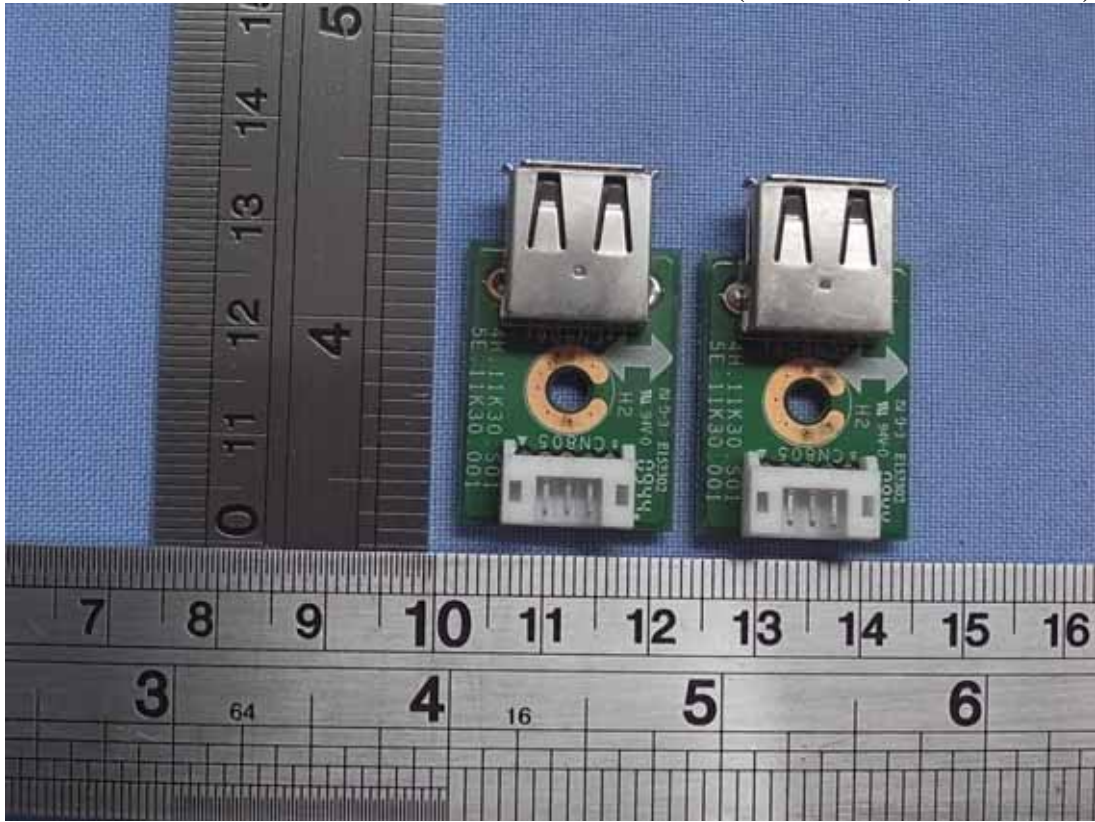


Figure 20
Internal View (USB Board, Back View)

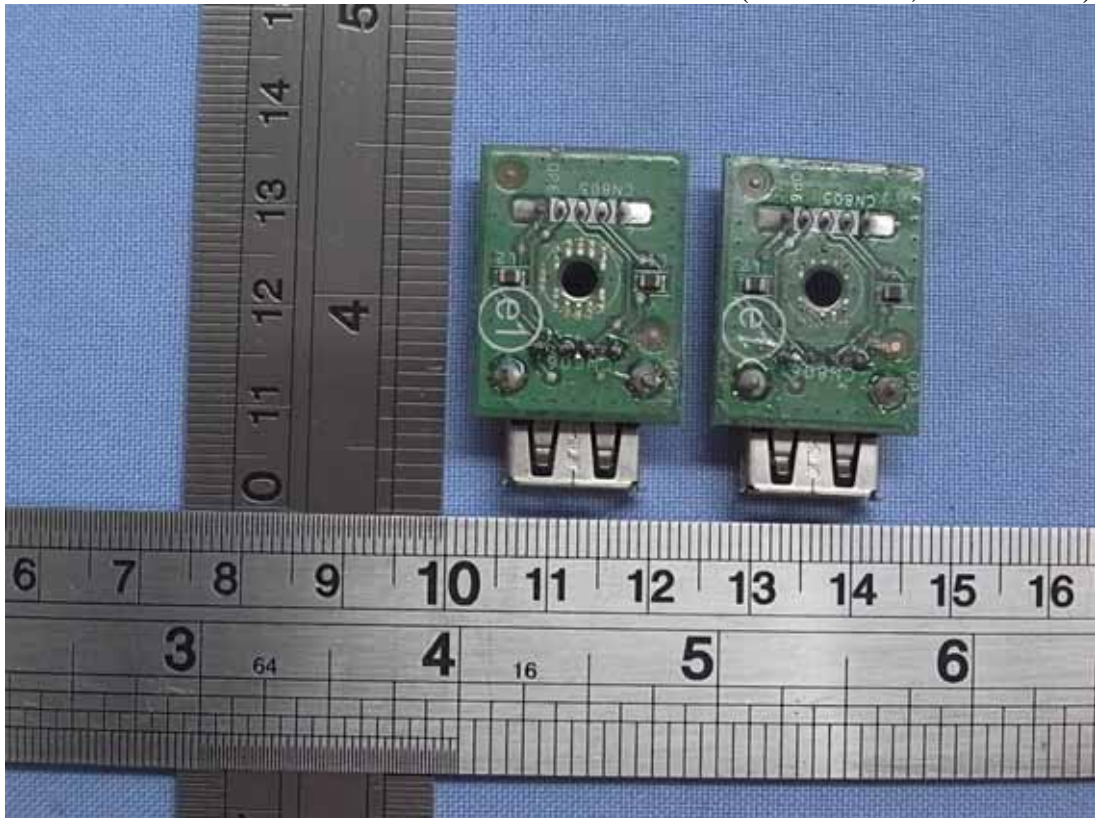


Figure 21
Internal View (Removed Back Cover)



Figure 22
Internal View



Figure 23
Internal View (Main Board, Front View)

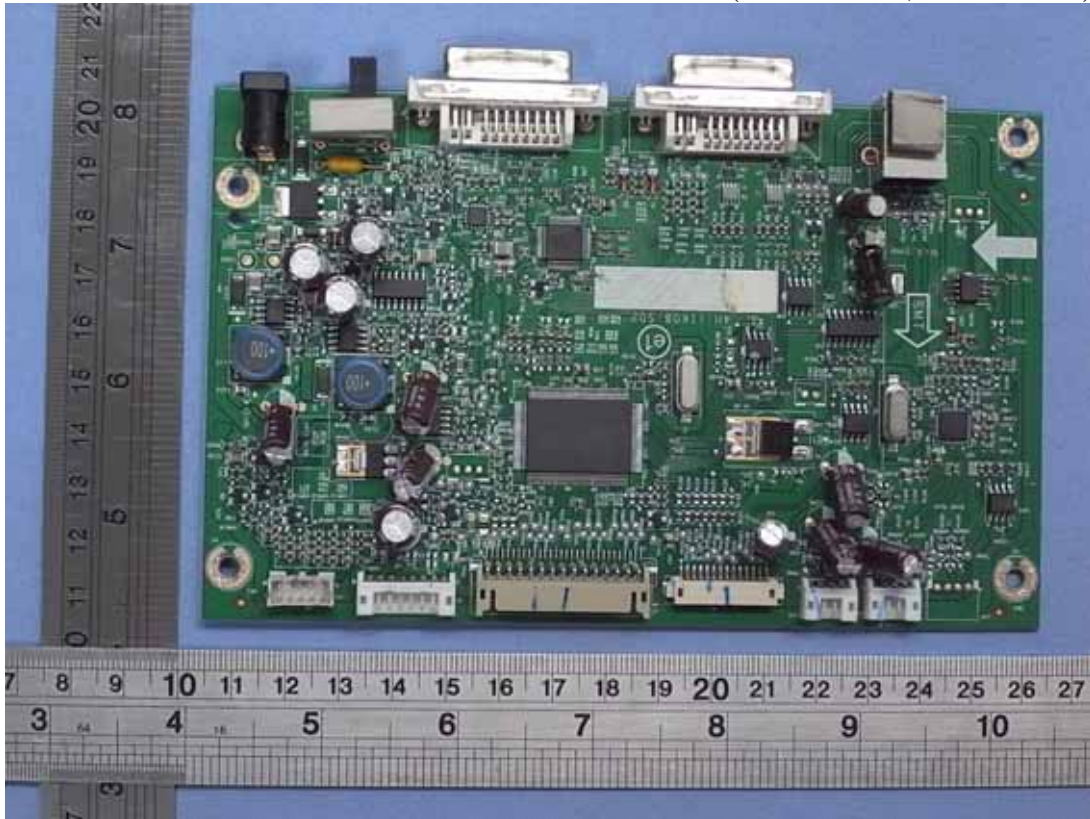


Figure 24
Internal View (Main Board, Back View)

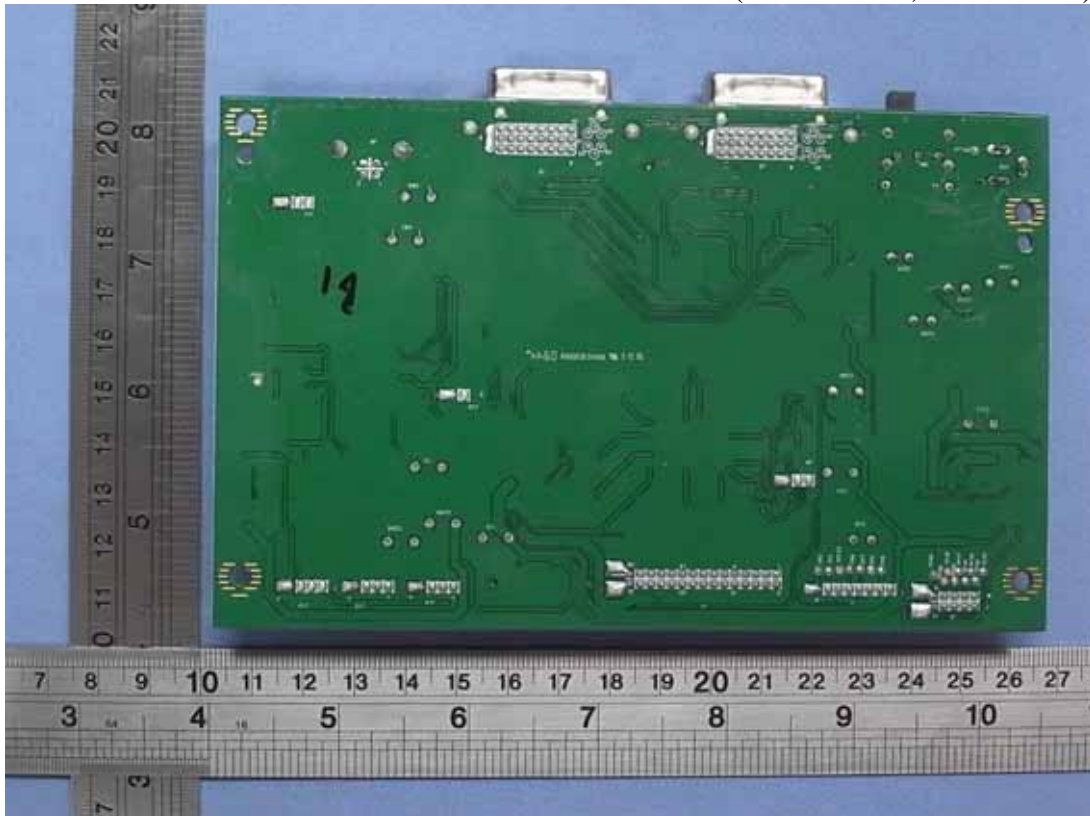


Figure 25
Internal View (Inverter Board, Front View)

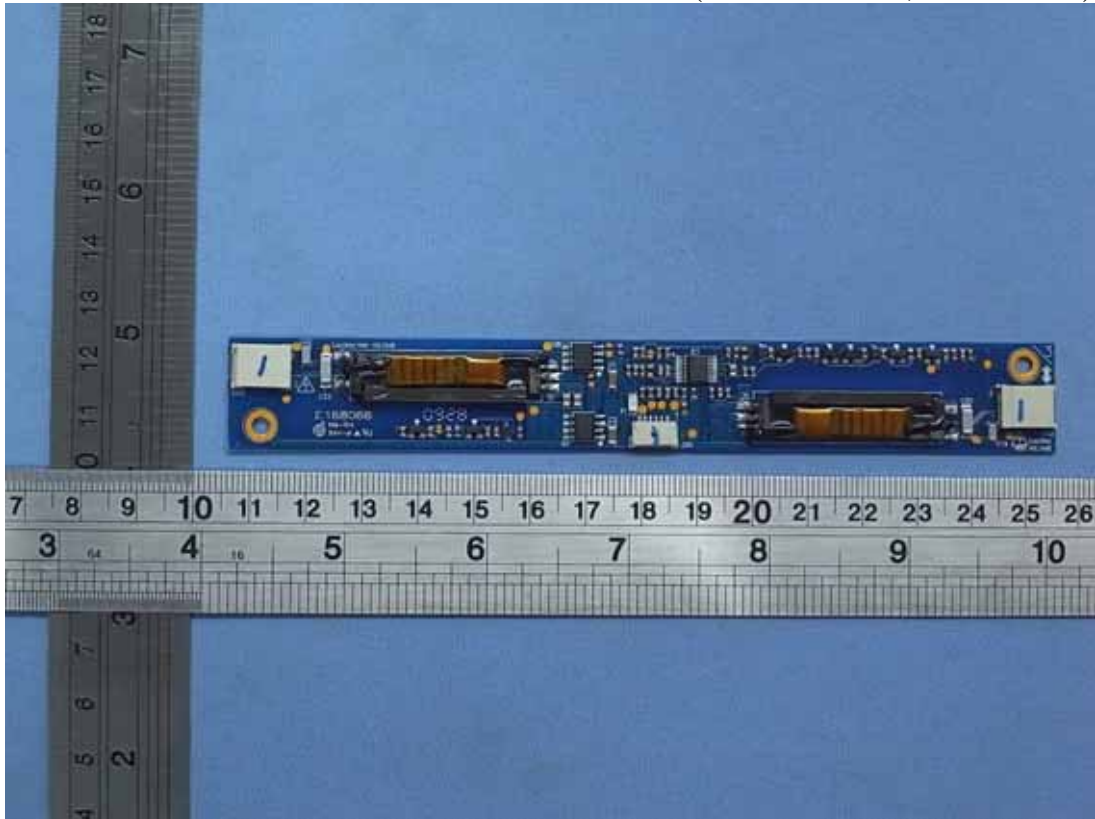


Figure 26
Internal View (Inverter Board, Back View)

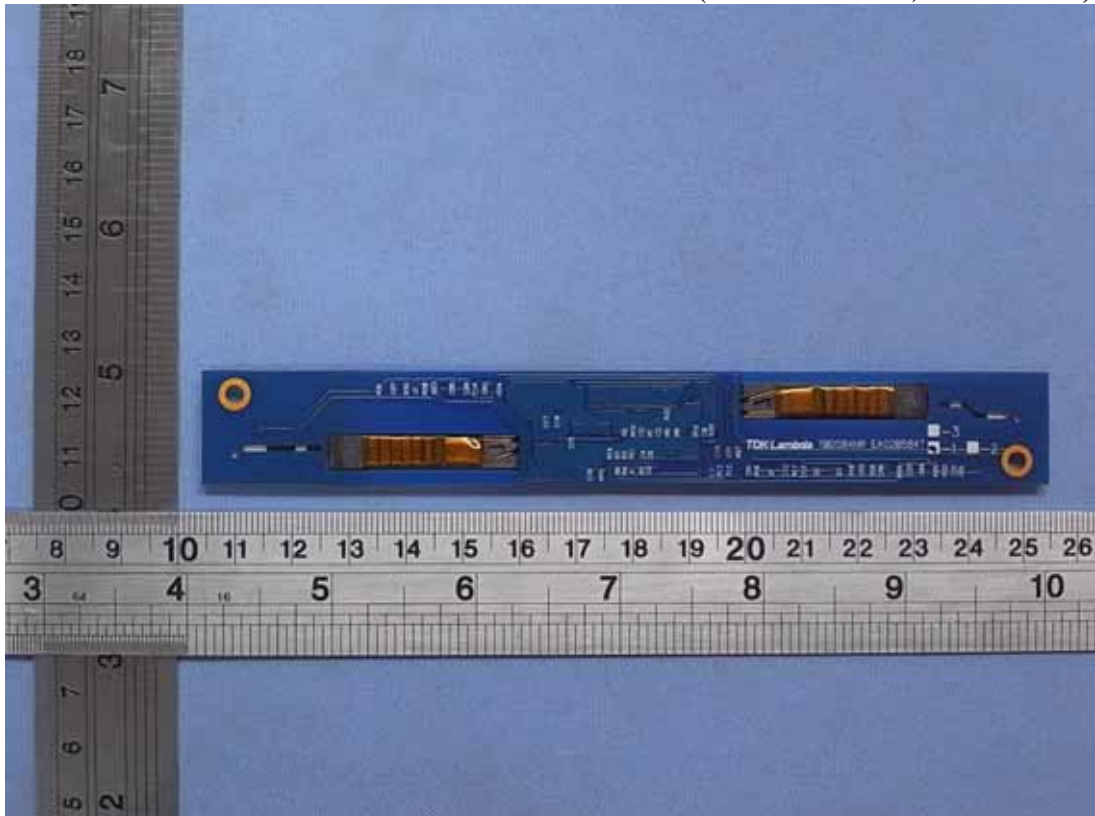


Figure 27
Internal View (Control Board, Front View)



Figure 28
Internal View (Control Board, Back View)

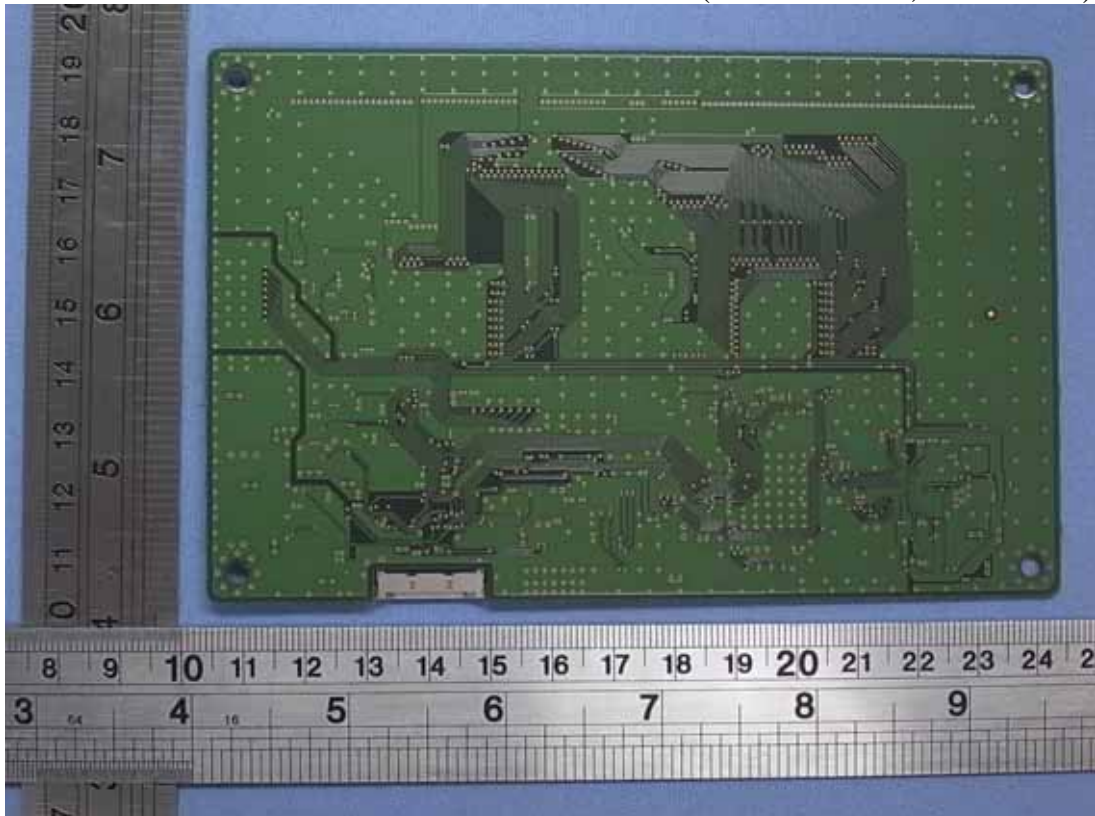


Figure 29
Internal View (LVDS Board, Front View)



Figure 30
Internal View (LVDS Board, Back View)

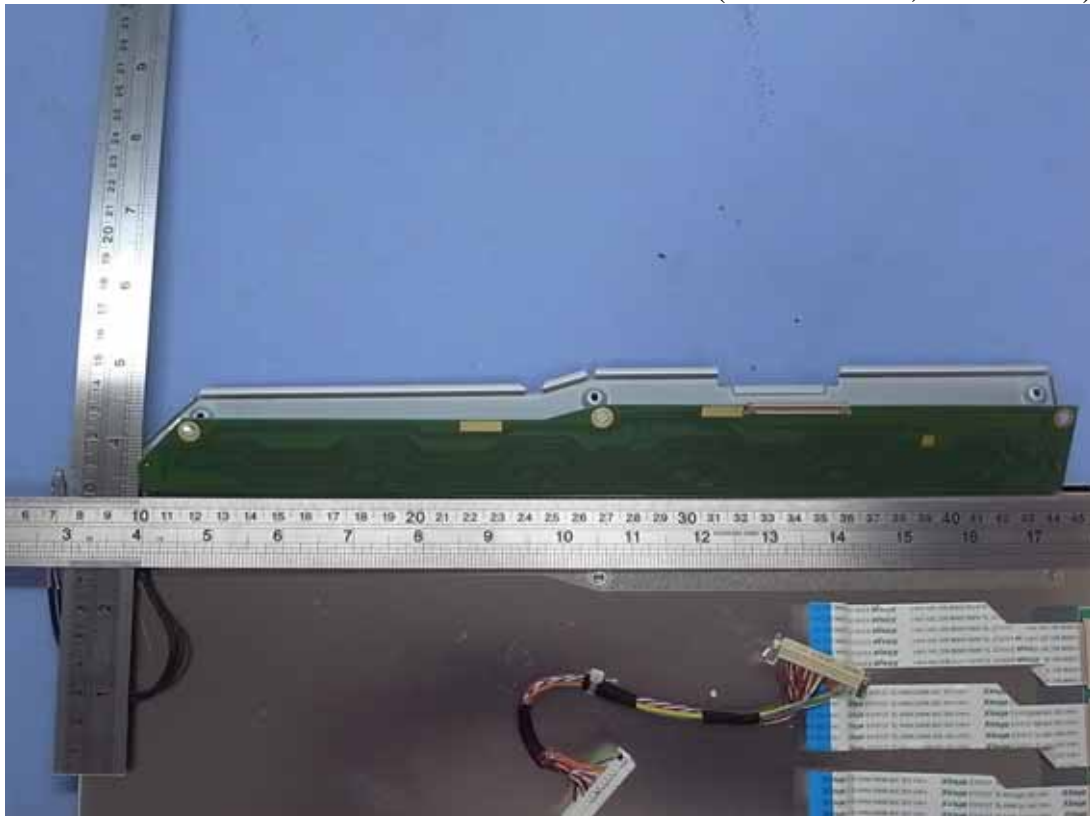


Figure 31
Internal View (LCD Panel, Back View)



Figure 32
Pen, Internal View (TX Module, Front View)



Figure 33
Pen, Internal View (TX Module, Back View)



Figure 34
USB Cable



Figure 35
D-Sub to DVI-I Cable

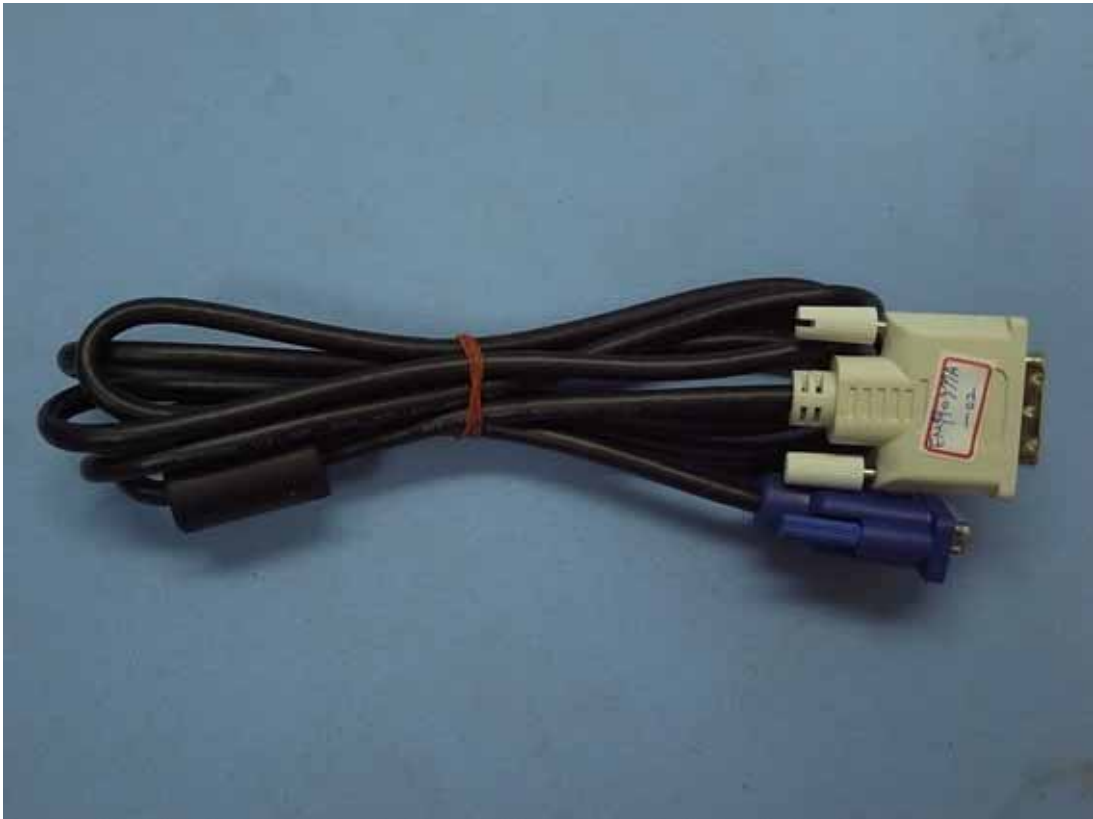


Figure 36
DVI-D to DVI-I Cable

