

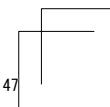
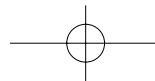
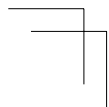
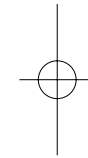
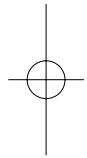
# DTK-2400

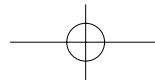
Installation Guide & Hardware Manual

설치 가이드 및 하드웨어 설명서

安裝指南及硬體手冊

安装指南与硬件手册

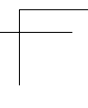
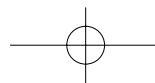
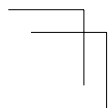
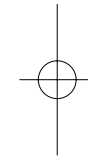
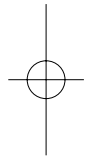


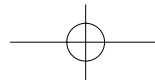


## Notice for this product

- Install the driver software for correct pen and this product.
- The following Help and Support information provides information about this product.

Help and Support information		Description
User's Manual	PDF document	The User's Manual is downloaded to your computer when the driver software is installed. Refer to the User's Manual to learn the useful information such as changing cables, using a VESA mount, troubleshooting and so on.
Important product information	PDF document	The Important product information is included in the installation CD. It contains precautions, product specifications, and other important information.
Quick Start Guide (This document)	Printed document	The Quick Start Guide provides a general overview of this product, including information such as how to use the product, and how to connect it to a PC.





## Welcome message

Dear Customer,

Thank you for buying this product pen display.

Many customers tell us that this product is critical to helping them be both more productive and more creative. For them, this product has become an essential part of their workflow. We appreciate the trust you place in us and our responsibility to provide you with the best creative tools possible.

To bring this latest product to market we have spent many hours talking to customers and incorporating your feedback. For example we have increased the size, resolution and color gamut over the earlier product models.

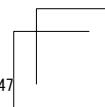
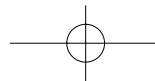
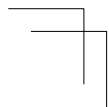
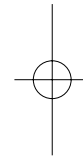
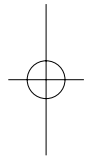
We also noticed that many of you work many hours a day, often struggling to meet a deadline while juggling numerous projects. Some of you experience aches and pains as a result. Consequently we have designed the ergonomics of this product for unparalleled flexibility on how it can be positioned on your desk. It has been one of our major goals that the product you are about to use will be comfortable and easy to use.

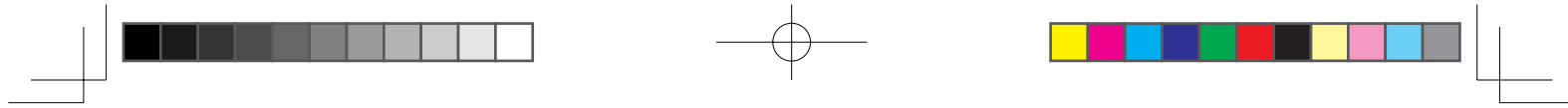
There are many other enhancements and improvements in this latest product. We encourage you to read this Quick Start Guide and at least scan the manual which will help you get the most out of your purchase.

We wish you the best of success in your creative endeavors.

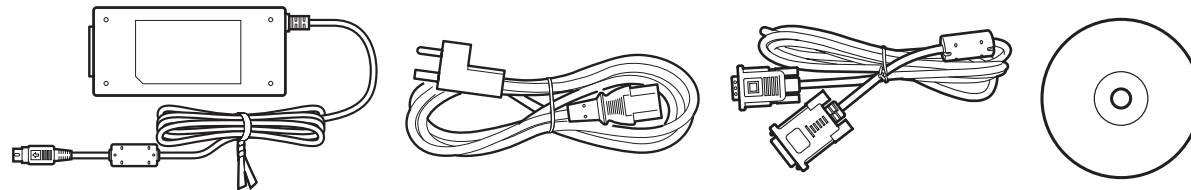
Sincerely

This product Development Team

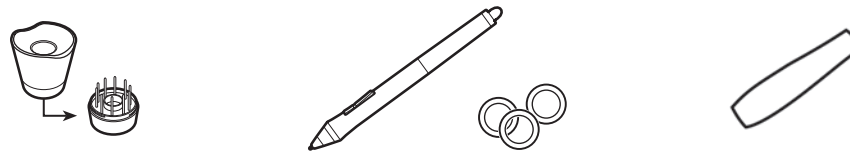
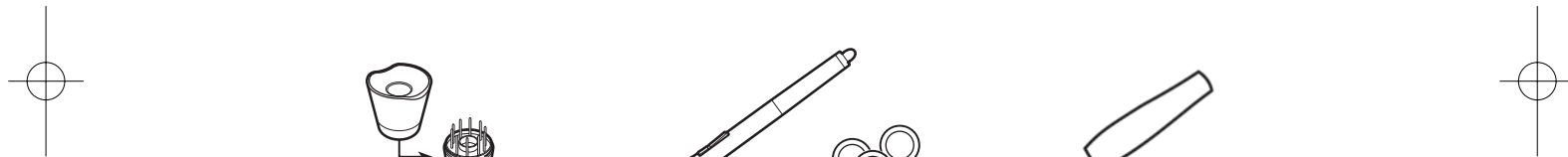




### Supplied accessories



Accessories not supplied with all models. Check the contents listed on the product packaging.

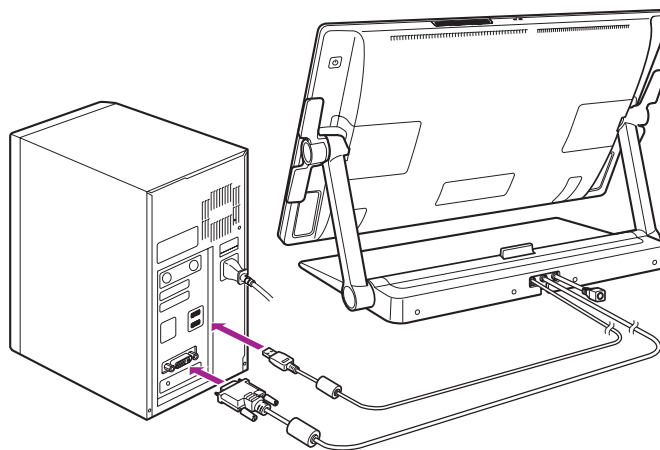


See the User's Manual to replace pen nib and personalize your pen.



See the User's Manual for information on attaching the VESA Mount.

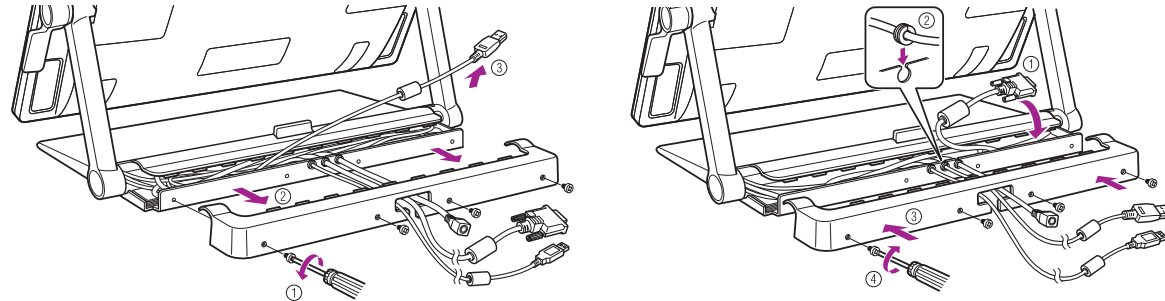
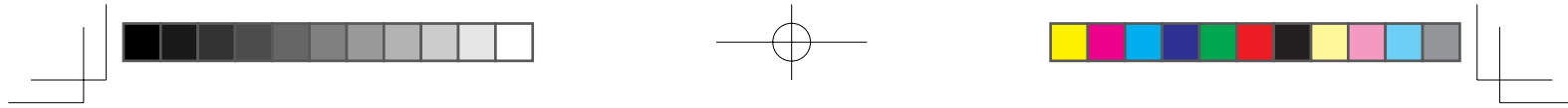
## Connecting this product




- 1 Turn off your computer.
- 2 Connect the DVI-D cable or DisplayPort cable to the corresponding connector on your computer. Note that the DisplayPort cable is shipped inside the stand. See the following page for instructions.

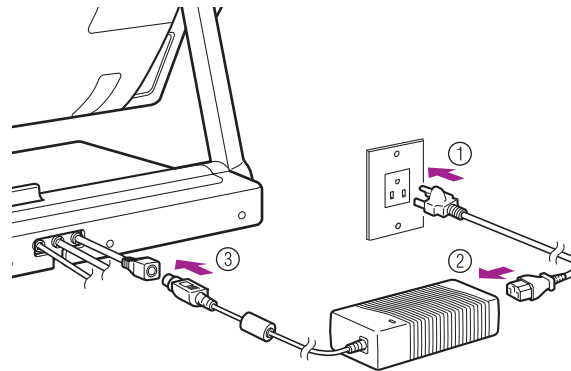
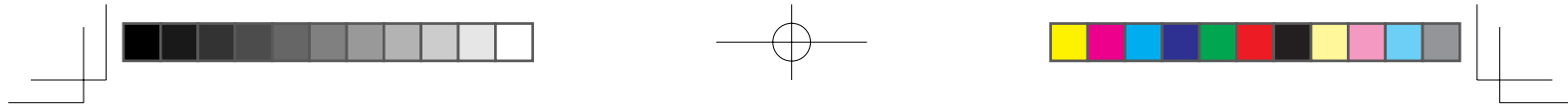


**Note** Connections can also be made with the included DVI-I to VGA cable. See the User's Manual for more information.

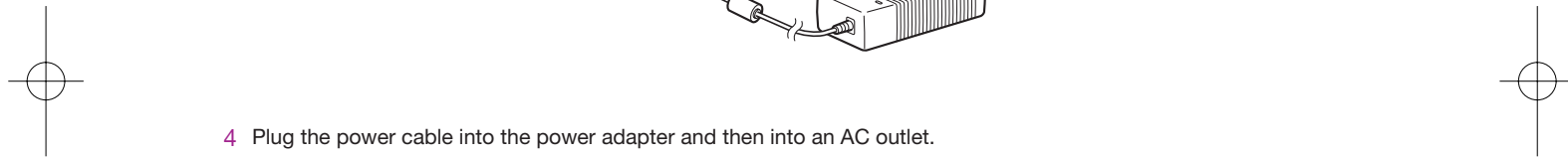


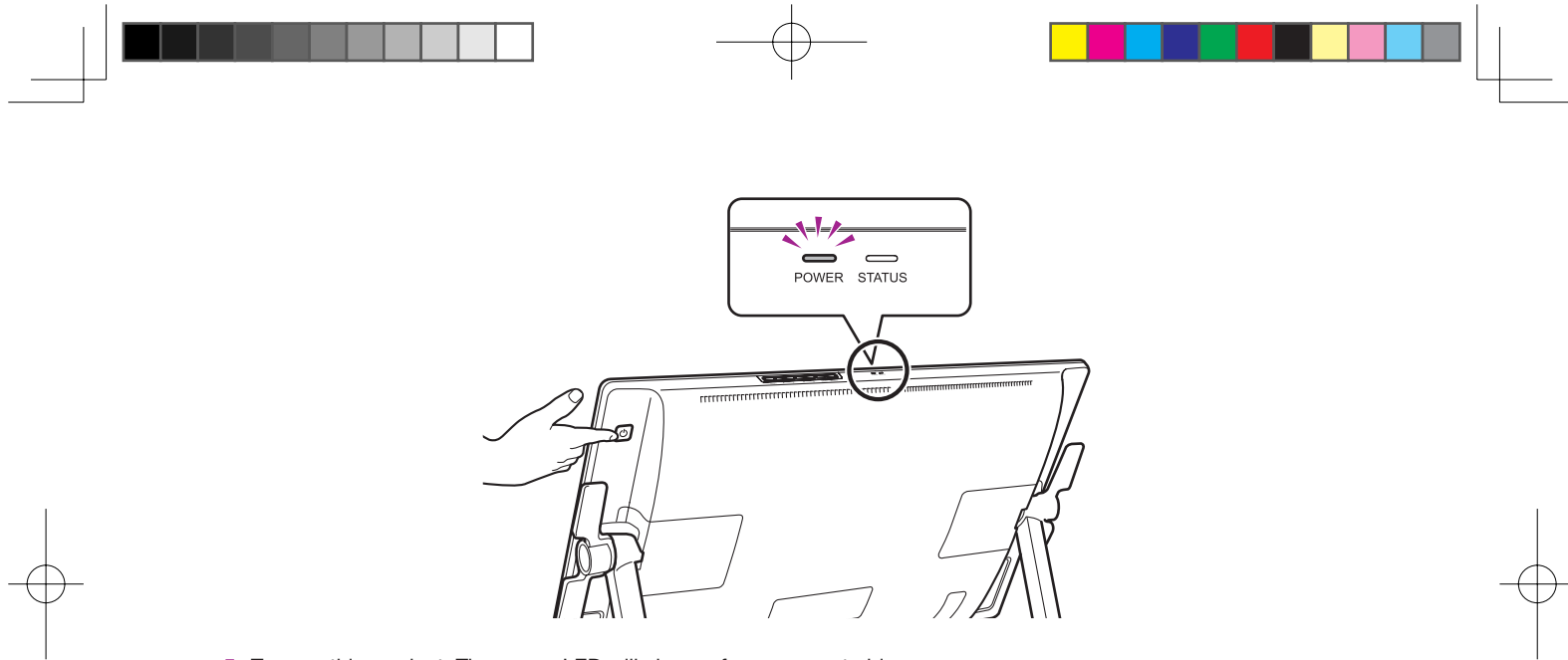
 **Note** When using the DisplayPort cable, remove from the stand as shown.

**3** Plug the USB connector into an available USB port on your computer or a USB hub attached to your computer.



4 Plug the power cable into the power adapter and then into an AC outlet.





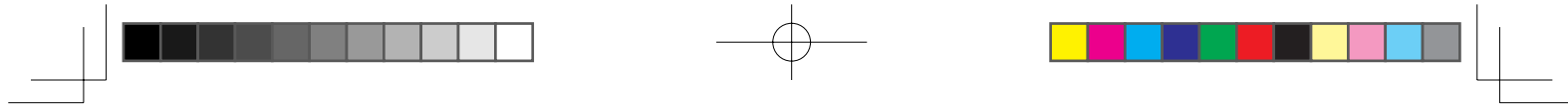
- 5 Turn on this product. The power LED will change from orange to blue.
- 6 Turn on your computer.



Note

If a DVI-I to VGA cable is connected, configure the color resolution and size settings while looking at the display. Then, open the menu screen, and select [Screen Setting] > [Auto Adjust]. For information on how to open the menu screen, see the User's Manual.





## Installing the tablet driver

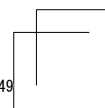
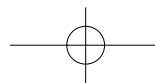
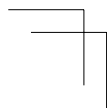
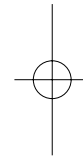
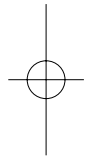
Save your work and close all open applications.

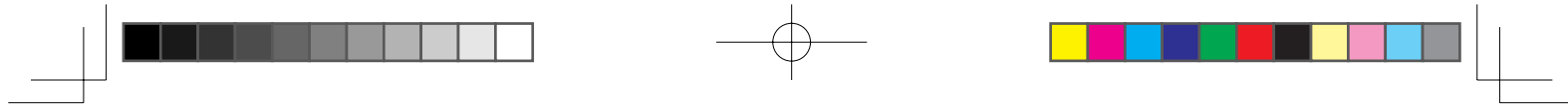
- 1 Insert this product installation CD. If the software installer menu is not automatically displayed, double-click on the Install icon located on the CD.
- 2 In the displayed dialog, click Install Tablet and follow the prompts.



Note

The User's Manual is downloaded to your computer when the driver software is installed.  
Click the Important Product Information menu in the dialog to view the Important Product Information guide for this product.  
It includes product safety precautions, specifications, and other important information.





## Calibrating this product

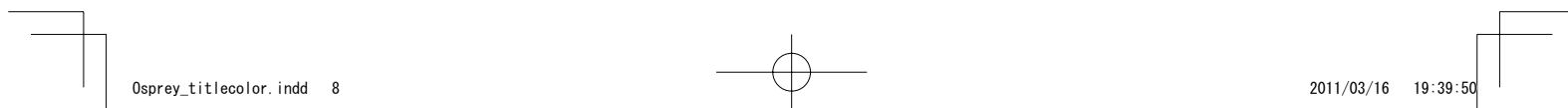
For optimum performance, you must calibrate this product to align the screen cursor with the position of the pen on the display screen. This is required to compensate for the viewing angle, and to adjust for parallax. Set this product in its working position, then follow the procedure below.

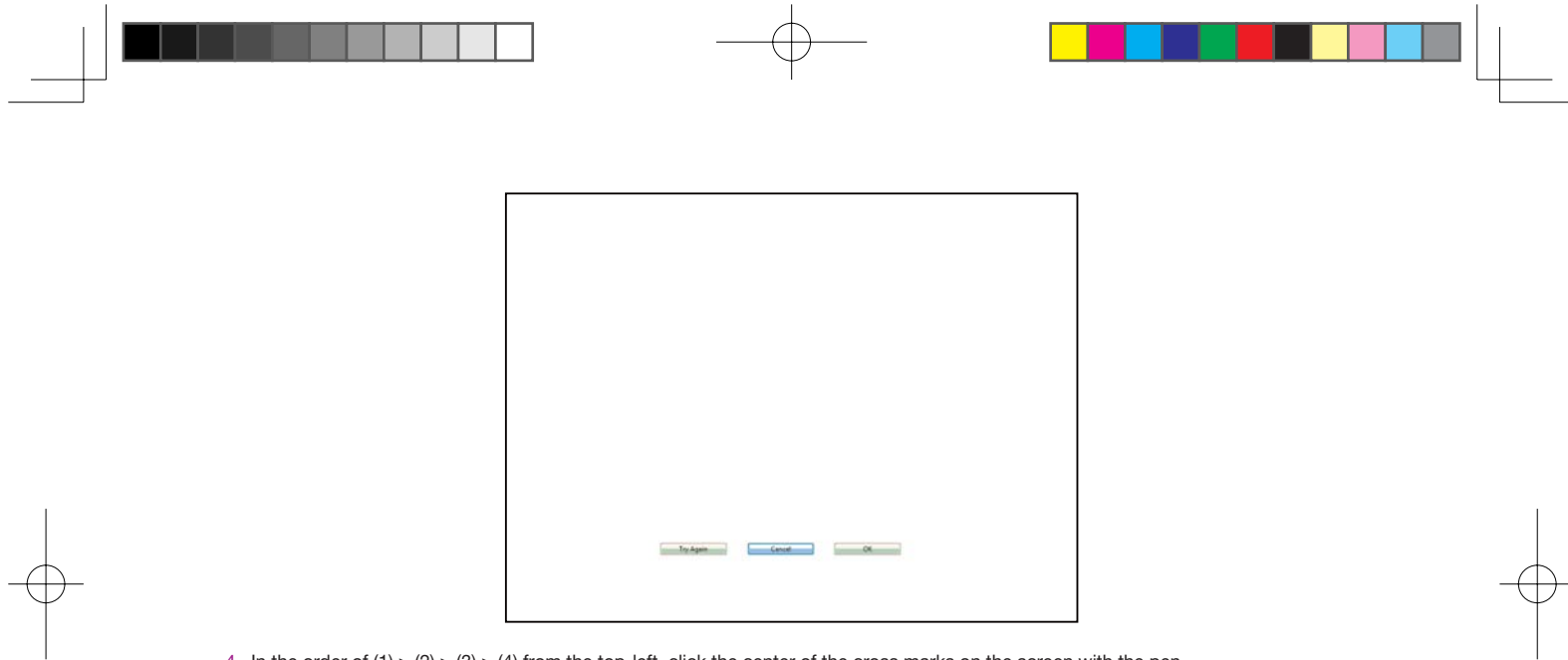
- 1 Open the pen tablet's control panel.  
See page 18.



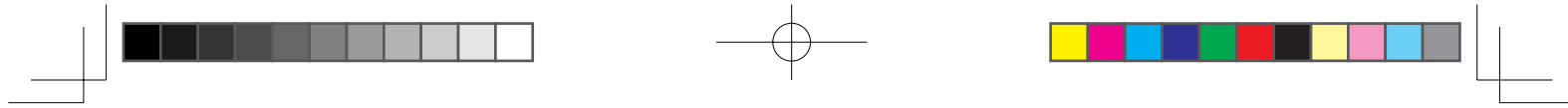
- 2 Click the [Position Adjustment] tab.
- 3 Click [Calibrate...].

8

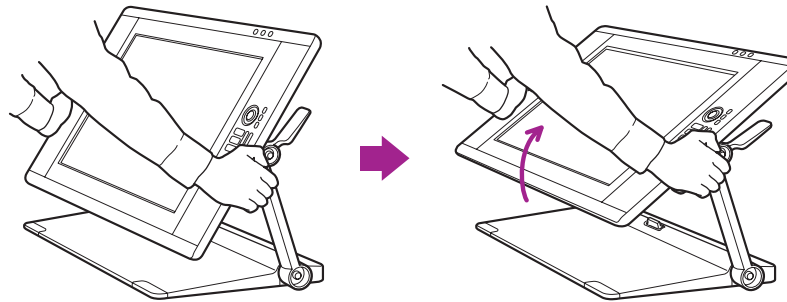




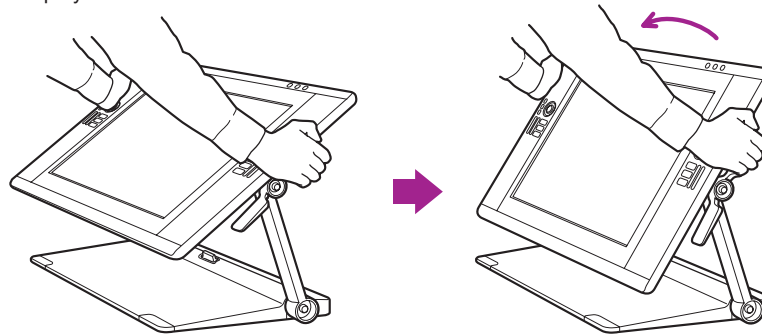
- 4 In the order of (1) > (2) > (3) > (4) from the top-left, click the center of the cross marks on the screen with the pen.
- The position adjustment is completed when the cross marks disappear.
  - When using Windows, click [OK] (or [Save]) and close the control panel after saving the adjustment contents.



### Changing the angle of this product



Use the lever to tilt the display forward.

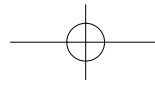


Use the lever to tilt the display backwards.

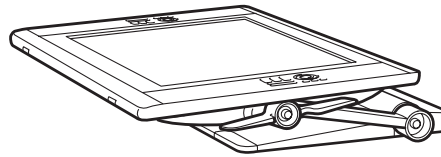


**Note** The angle of the display can be changed with either the upper or lower lever.

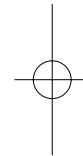
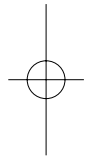
10



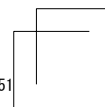
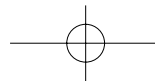
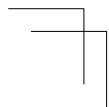
### Adjusting this product to a comfortable position

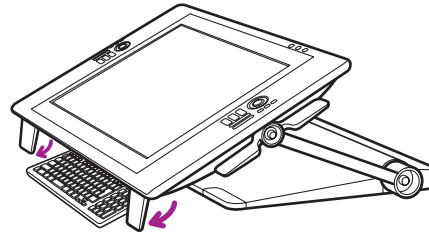
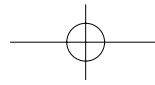


This product can be used nearly flat on your work surface.

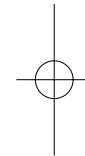
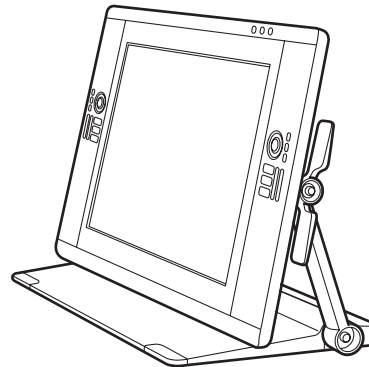
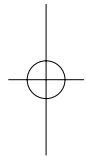


This product can be lowered off the edge of a desk or table and used above your lap for intensive creative work. See page 14 for details.

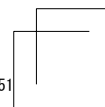
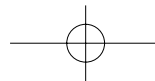
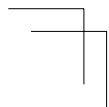


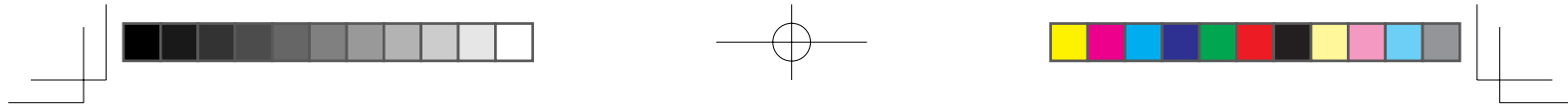


Flip down feet on bottom edge to allow keyboard placement beneath.

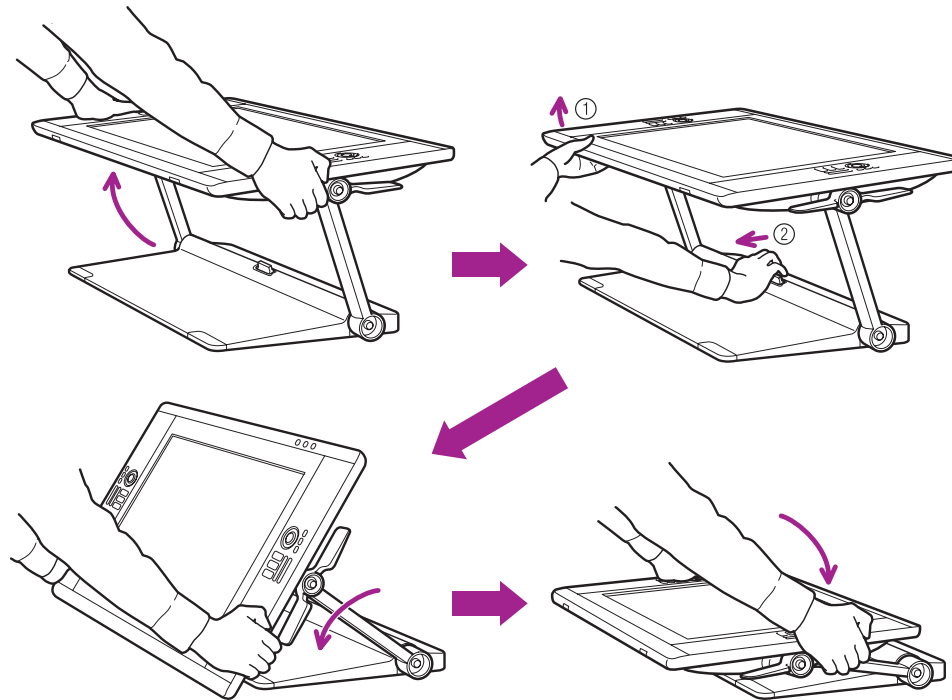


This product can be used vertically upright as a display.

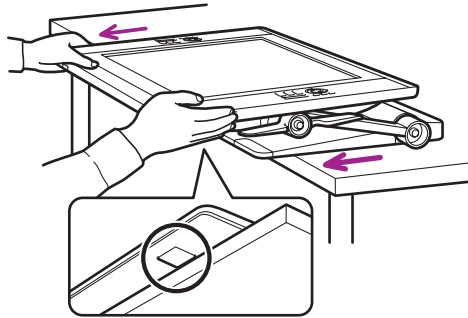
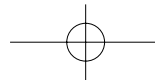




Setting up this product to be positioned above your lap



1 Put the display into a flat position.

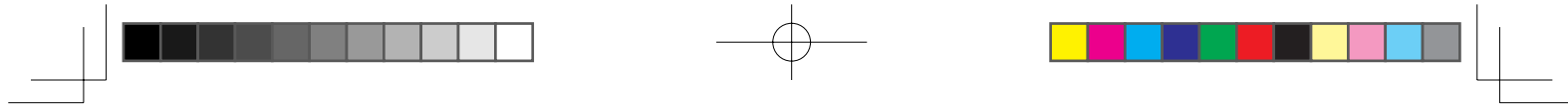


2 Pull the display toward you until it just clears the desktop or until you feel it lock into place. (There are rubber pads on the base that grip the surface of the desk and prevent the display from moving beyond a safe position.)

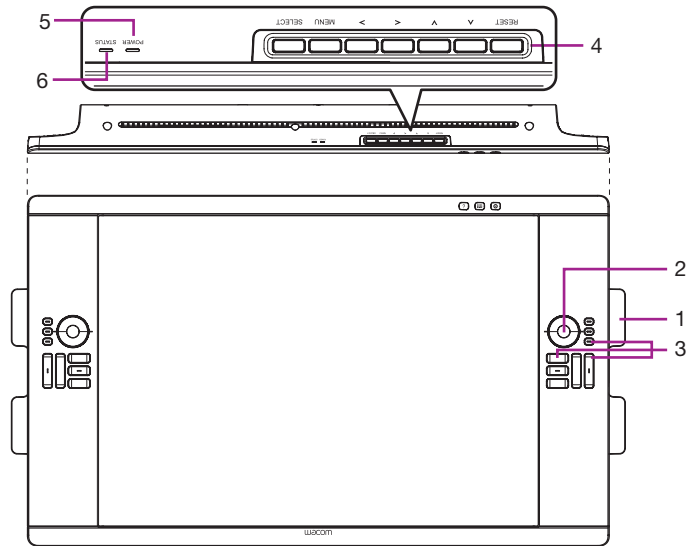


14 3 Use the incline levers to adjust the angle as required.





## Getting to know this product



1. Incline lever

2. Touch Ring

By default, the Touch Ring enables you to zoom in most graphics applications and to scroll in other applications. Press the mode button to switch between three customizable states.

3. ExpressKeys

These keys simulate modifier keys, keystrokes, and other frequently used functions.

4. OSD buttons

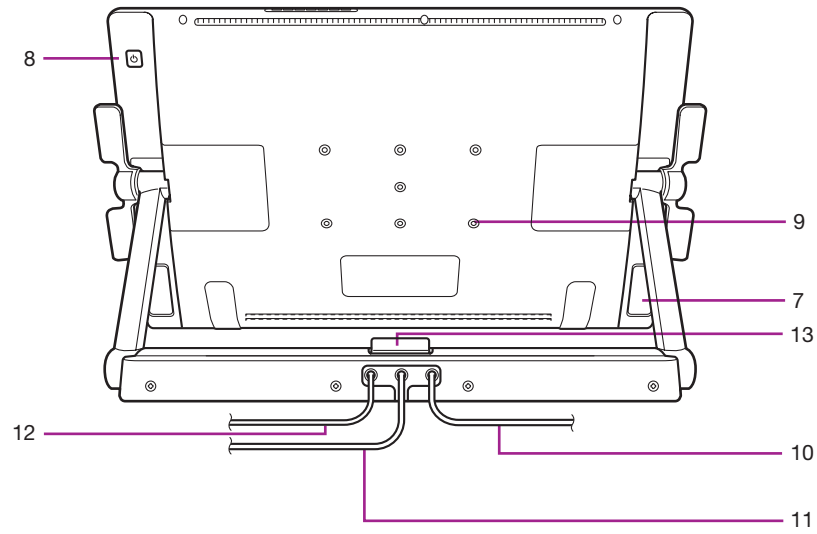
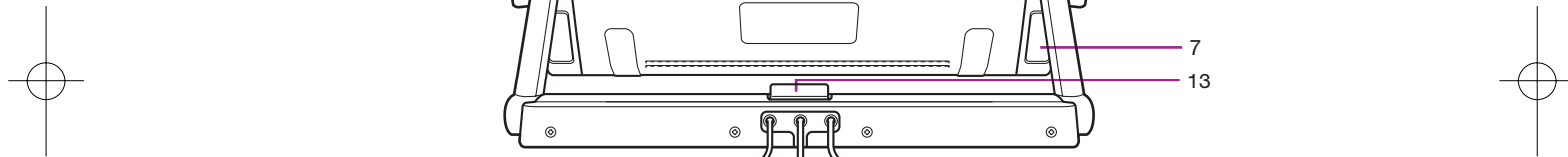
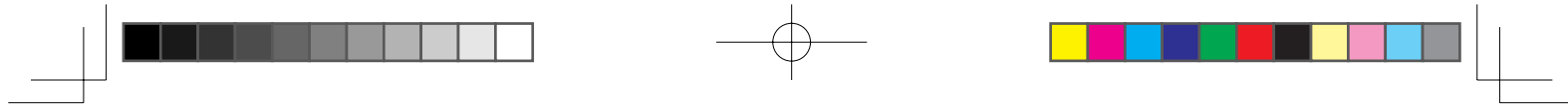
These buttons enable you to adjust a variety of display settings.

5. Power LED

6. Status LED



**Note** See the User's Manual for details on these and other features.

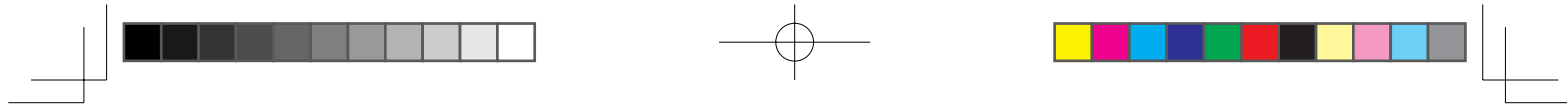


- 7. Support legs
- 8. Power switch
- 9. VESA mount hole
- 10. Power cable
- 11. DVI cable
- 12. USB cable
- 13. Stand lock release lever

## Product Specifications

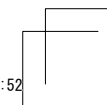
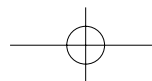
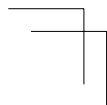
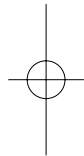
### GENERAL SPECIFICATIONS

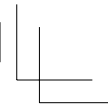
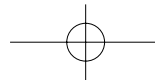
Model/Brand	DTK-2400 (Code Name: Osprey) Pen only model
Dimensions (W x H x D)	769.3 x 463.74 x 64 mm (excluding the Stand)
Weight	Main Body: 10.0 kg, Tablet Stand: 14.0 kg (TBC)
Operating temperature & humidity	5 to 35 degrees C, Humidity: 20 % to 80 % RH (non-condensing)
Storage temperature & humidity	-10 to 60 degree C, Humidity: 20 % to 90 % RH (non-condensing) (Maximum storage humidity is 38 % at a temperature of 60 degree C, and maximum storage temperature is 42 degree C at a humidity of 90 %.)
Certification and Compliance	VCCI Class B, FCC Part 15 Subpart B(class B) and C, CE, KCC, BSMI, C-tick CB, CCC, GOST-R, China RoHS, Korean RoHS, EU RoHS
Compatibility	Windows7 / Vista / Vista x64 / XP / XP x64 Mac OS X 10.4 or greater
Stand	Stand style can be changed flexibly.
Interface Cables	DisplayPort, DVI-D, DVI-A, USB
Cover plate	AG etched glass (Tempered glass)
Input voltage	24 VDC
Power Management	VESA DPMS
Power Consumption (with AC adaptor)	80 W (MAX) (TBC) 2 W or less in sleep mode (USB non-connected) 1 W or less in OFF mode
USB HUB	Up stream: 1 Down stream: 2 (internal; 1, external; 1) Load current is Maximum 0.5 A per port.



## DISPLAY

Display Panel	a-Si Active Matrix TFT LCD (A-IPS)
Screen Size	24.1 inch (518.4 x 324.0 mm)
Aspect ratio	16:10
Number of pixels	1920 x 1200
Input Video Connector	DisplayPort, DVI-I (29 pin)
Input Video Signal	DisplayPort Complies with Standard V1.1a, applicable to HDCP DVI 1.0 compliance Analog RGB
Output Video Connector	no video output
Output Video Signal	no video output
Supported Resolution	1920 x 1200, 1600 x 1200, 1280 x 1024, 1024 x 768, 800 x 600, 640 x 480 pixels
White Luminance Uniformity	75 % (min.)
Pixel Pitch	0.270 (H) x 0.270 (V) mm
Viewing Angles @ CR>10 (horizontal/vertical)	178(89/89) / 178(89/89) (typ.)
Display Colors	1,073,741,824 colors (Depends on display card used.)
Contrast Ratio	700:1 (typ.) (TBC)
Luminance	180 cd/m <sup>2</sup> (typ.) (TBC)
Response Time (Tr + Tf)	13 ms (typ.)
OSD Manual Control	Brightness, Contrast, Pitch, Phase, Vertical position, Transparency, Auto Adjust, Horizontal position, Language, Back Light, Menu Position, Reset, Scaling, Color temperature (9300K/6500K/5000K/User/Direct)
Plug and Play	DDC 2B, DDC/CI
LCD quality	Each LCD panel is produced under very stringent quality standards. Production techniques cannot guarantee an absolutely perfect TFT display. Wacom does not allow any pixel to be always white or always black. A small number of pixels are allowed to show a wrong color for some parts of the color spectrum. This does not mean the display is defective.





### PEN TABLET

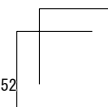
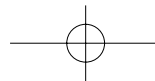
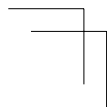
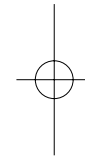
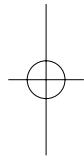
Reading Technology	Electro-magnetic resonance technology
Active Area	518.4 x 324.0 mm
Resolution	0.005 mm/point (5080 lpi)
Accuracy	± 0.5 mm (center), the edge area 1 (20 mm wide from edge of display area) to be ± 2.0 mm, the edge area 2 (3 mm wide from edge of display area) to be ± 4.0 mm
Reading Height	5 mm or more (Center)
Accuracy Assurance Height	0 mm from cover plate
Maximum Report Rate	133 points/sec
Maximum Pen Tilt Range	40 degrees from vertical (Except for the corners)
Pen Tilt levels	± 60 levels
Pressure levels	2048 levels
Communication Interface	USB
Stylus Pen	KP-501E-01

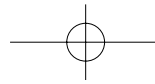
### POWER ADAPTER

Input voltage	100 to 240 VAC, 50/60 Hz
Output voltage	24 VDC, 5.0 A (max)

### Grip Pen KP-501E-01

Pen tip travel	Max 1.0 mm
Pressure levels	2048 levels
Eraser tip travel	Max 2.0 mm
Physical size(L x D)	156.5 x 14.9 mm (6.17 x 0.59 in)
Weight	17 g (0.63 oz), approximately





## Customizing this product

Open the Wacom Tablet control panel:  
Windows – Click [Start]>> [ (All) Programs]>>[XXXX]>>[XXXX Properties].  
Mac – Open [System Preferences] >> select [XXXX].

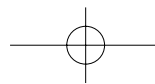


**Note** See the User's Manual to learn how to customize the ExpressKeys and Radial Menu to enhance your productivity.

## Registering your this product

### Support options

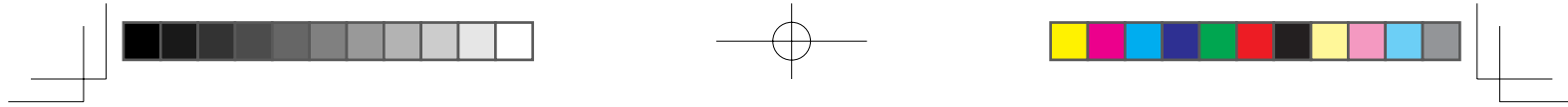
Check the Technical Notes or the Troubleshooting section in the User's Manual.  
Visit our web site at [www.wacom.com/product support](http://www.wacom.com/product support)  
Call the Wacom Customer Care Center. Available in English from 7:30 am to 5:00 pm  
Monday - Thursday, and 8:30 am to 5:00 pm Friday (Pacific Time) at 360-896-9833.



## 본 제품에 대한 고지 사항

- 올바른 펜과 본 제품에 대한 드라이버 소프트웨어를 설치하십시오 .
- 다음 도움말 및 지원 정보에서는 본 제품에 대한 정보를 제공합니다 .

도움말 및 지원 정보		설명
사용설명서	PDF 문서	사용설명서는 드라이버 소프트웨어를 설치할 때 컴퓨터에 다운로드됩니다 . 케이블 변경 , VESA 마운트 사용 , 문제 해결 등의 유용한 정보는 사용설명서를 참조하십시오 .
중요 제품 정보	PDF 문서	중요 제품 정보는 설치 CD 에 포함되어 있으며 안전 주의 사항 , 제품 사양 및 기타 중요 정보를 포함합니다 .
빠른 시작 가이드 (본 문서)	인쇄된 문서	빠른 시작 가이드에서는 제품 사용 방법 , PC 에 연결하는 방법 등의 정보를 포함하여 본 제품에 대한 일반 개요를 제공합니다 .



## 시작 메시지

친애하는 고객 여러분께,

본 제품 펜 디스플레이를 구입해 주셔서 감사합니다.

많은 고객들이 본 제품 덕분에 생산성과 창의성을 모두 다 끌어올릴 수 있었다고 말씀해 주셨습니다. 본 제품은 이들 고객의 워크플로우에 필수적인 부분으로 자리잡았습니다. 믿음을 주신 데 대해 깊은 감사를 드리며 최고의 창의적인 도구를 제공하도록 최선의 노력을 다하겠습니다.

본 최신 제품을 출시하기 위해 고객과 대화를 나누고 수렴된 의견을 통합하는 데 많은 시간을 들였습니다. 예를 들어 이전 제품 모델에 비해 크기, 해상도 및 색 공간을 늘렸습니다.

대부분의 고객이 하루에 매우 많은 시간 동안 작업하고 간혹 수많은 프로젝트를 진행하면서 마감 시간에 맞추기 위해 고군분투하는 걸 목격했습니다. 결과적으로 온몸이 쑤시고 아파온 경험을 하신 분들도 계실 것입니다. 따라서 아주 유연하게 책상 위에 놓고 사용할 수 있도록 본 제품을 인체공학적으로 설계했습니다. 편안하고 사용하기 쉬운 제품을 만드는 것이 주된 목표 중 하나입니다.

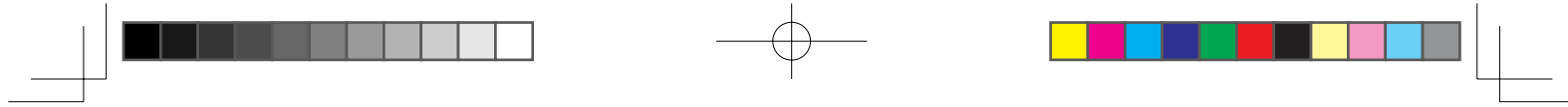
본 최신 제품에서는 다른 많은 기능도 개선 및 향상되었습니다. 이 빠른 시작 가이드를 읽고 설명서를 검색하면 구입하신 제품을 최대한도로 활용할 수 있을 것입니다.

창의적인 노력으로 최고의 성공을 거두시기 바랍니다.

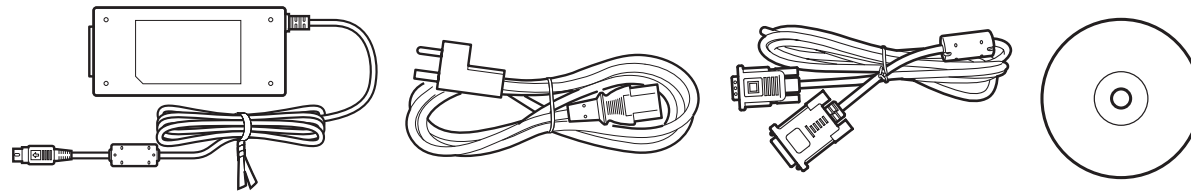
감사합니다.

제품 개발팀

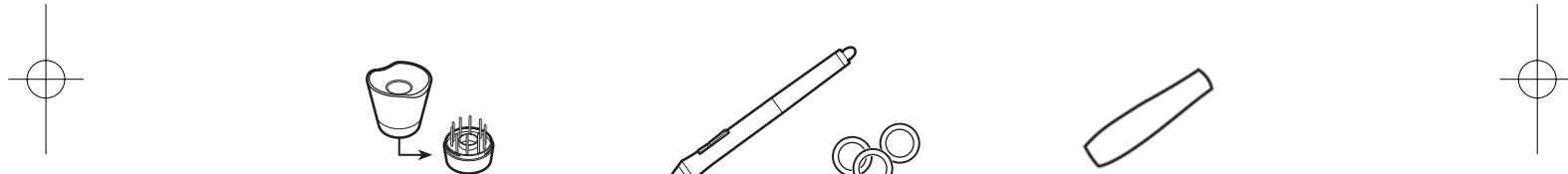




## 부속품



일부 모델에서만 제공되는 부속품입니다. 제품 포장에 나열된 내용물을 확인하십시오.

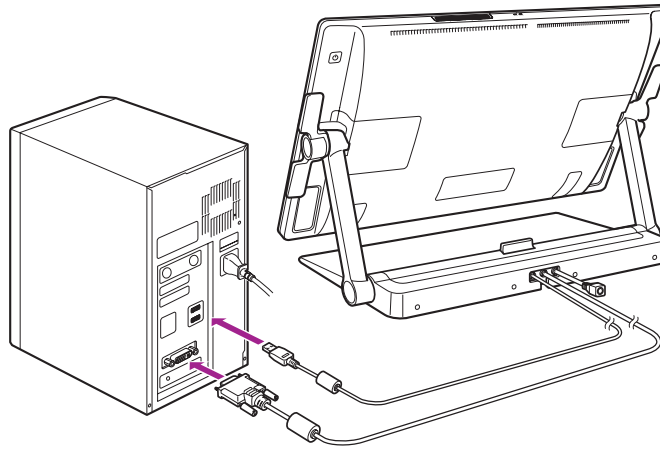


펜 니브를 교체하고 펜을 개인 설정하려면 사용설명서를 참조하십시오.



VESA 마운트 부착에 대한 자세한 내용은 사용설명서를 참조하십시오.

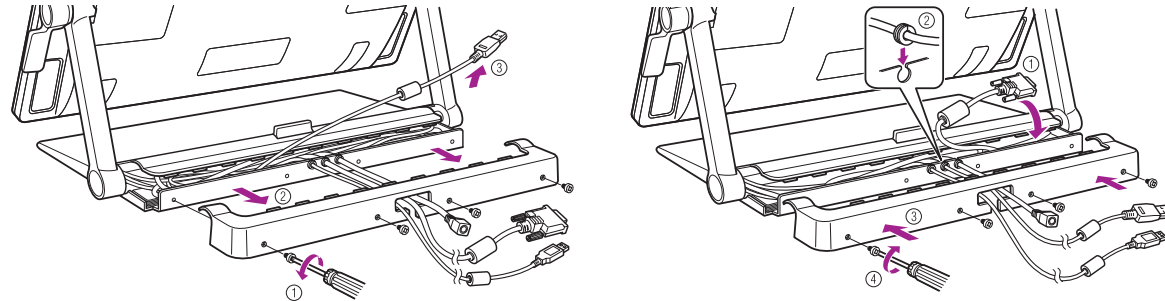
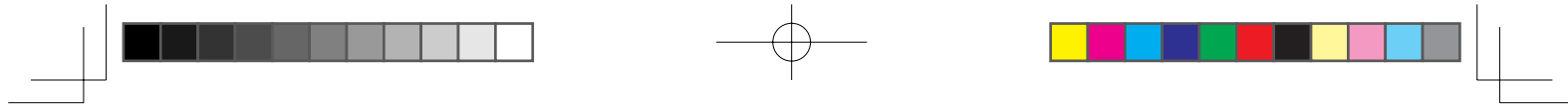
## 본 제품 연결하기




- 1 컴퓨터를 끕니다.
- 2 DVI-D 케이블이나 DisplayPort 케이블을 컴퓨터의 해당 커넥터에 연결합니다. DisplayPort 케이블은 스탠드 내에 들어 있는 상태로 제공됩니다. 지침은 다음 페이지를 참조하십시오.

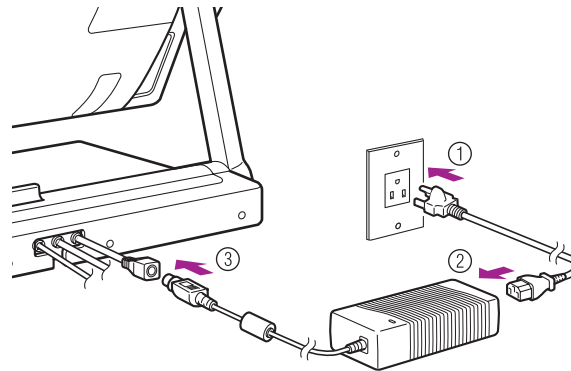
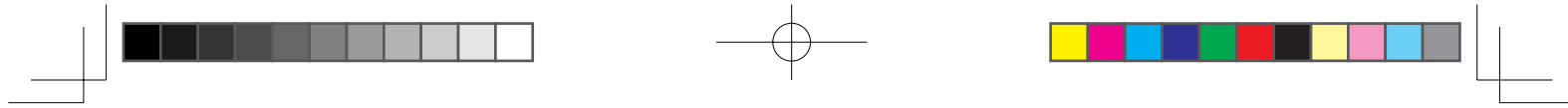


**Note** 기본 제공된 DVI-I 대 VGA 케이블로 연결할 수도 있습니다. 자세한 내용은 사용설명서를 참조하십시오.



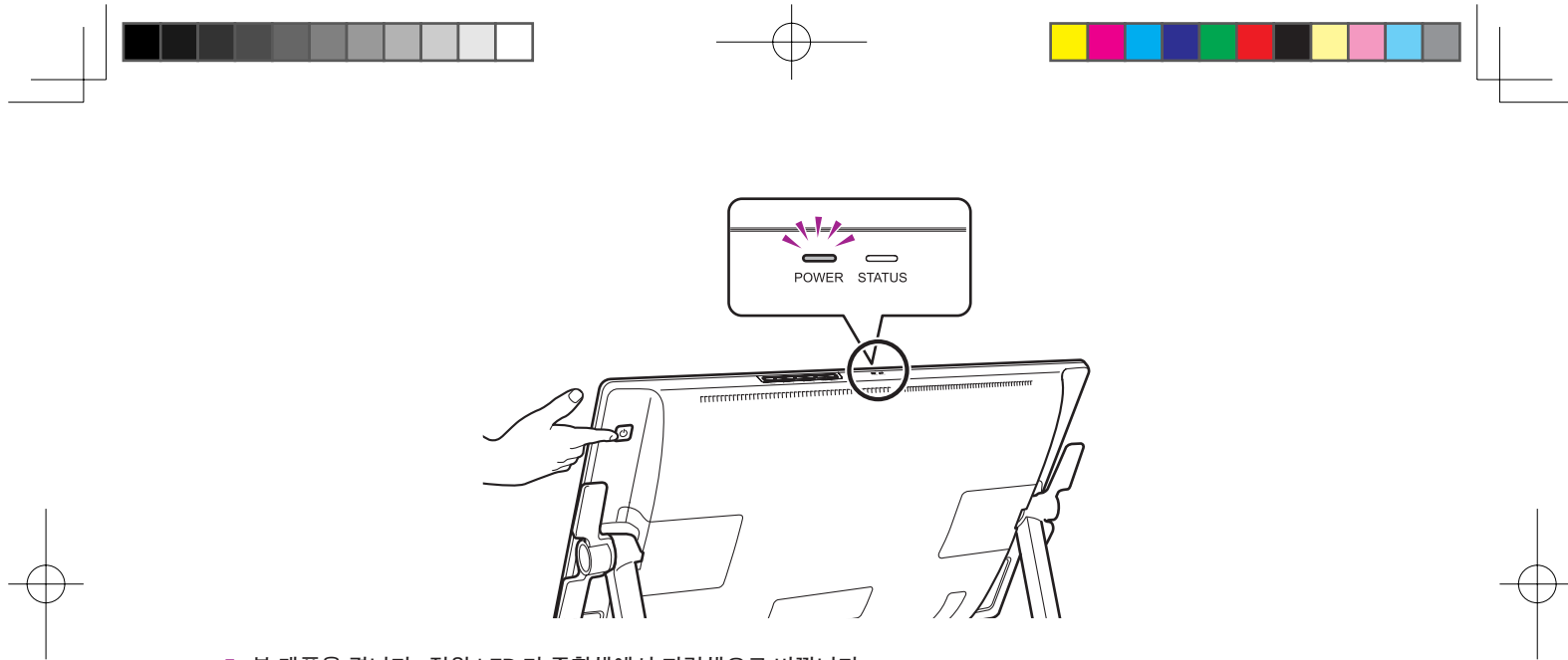
 **Note** DisplayPort 케이블을 사용하는 경우 그림과 같이 스탠드에서 분리합니다.

**3** USB 커넥터를 컴퓨터의 사용 가능한 USB 포트에 꽂거나 컴퓨터에 부착된 USB 허브에 꽂습니다.



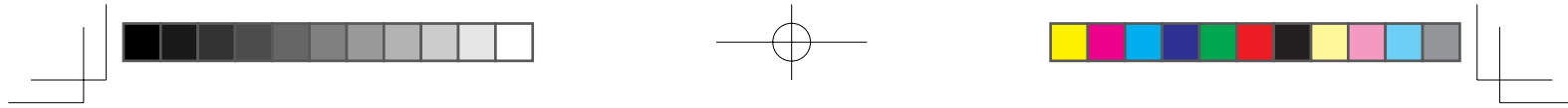
4 전원 케이블을 전원 어댑터와 AC 콘센트에 차례로 꽂습니다.





- 5 본 제품을 켭니다. 전원 LED가 주황색에서 파란색으로 바뀝니다.
- 6 컴퓨터를 켭니다.

**Note** DVI-대 VGA 케이블을 연결한 경우 디스플레이를 보면서 색 해상도와 크기 설정을 구성합니다. 그런 다음 메뉴 화면을 열고 [Screen Setting( 화면 설정 )] > [Auto Adjust( 자동 조정 )]를 선택합니다. 메뉴 화면을 여는 방법은 사용설명서를 참조하십시오.



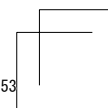
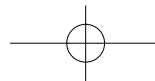
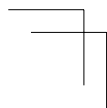
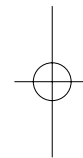
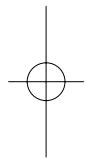
## 타블렛 드라이버 설치하기

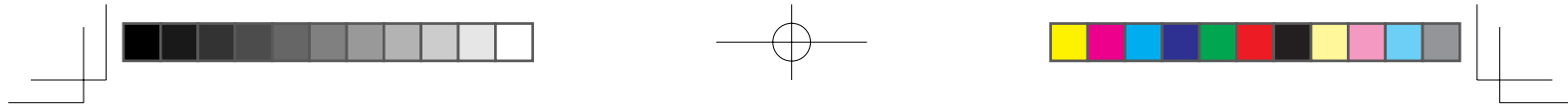
작업 내용을 저장하고 열려 있는 애플리케이션을 모두 닫습니다.

- 1 본 제품의 설치 CD를 넣습니다. 소프트웨어 설치 관리자 메뉴가 자동으로 표시되지 않으면 CD의 Install(설치) 아이콘을 더블클릭합니다.
- 2 표시된 대화 상자에서 Install Tablet(타블렛 설치)을 클릭하고 프롬프트를 따릅니다.



사용설명서는 드라이버 소프트웨어를 설치할 때 컴퓨터에 다운로드됩니다.  
대화 상자에서 Important Product Information(중요 제품 정보) 메뉴를 클릭하여 본 제품에 대한 중요 제품 정보 가이드를 봅니다.  
이 가이드는 제품 안전 주의 사항, 사양 및 기타 중요 정보를 포함합니다.





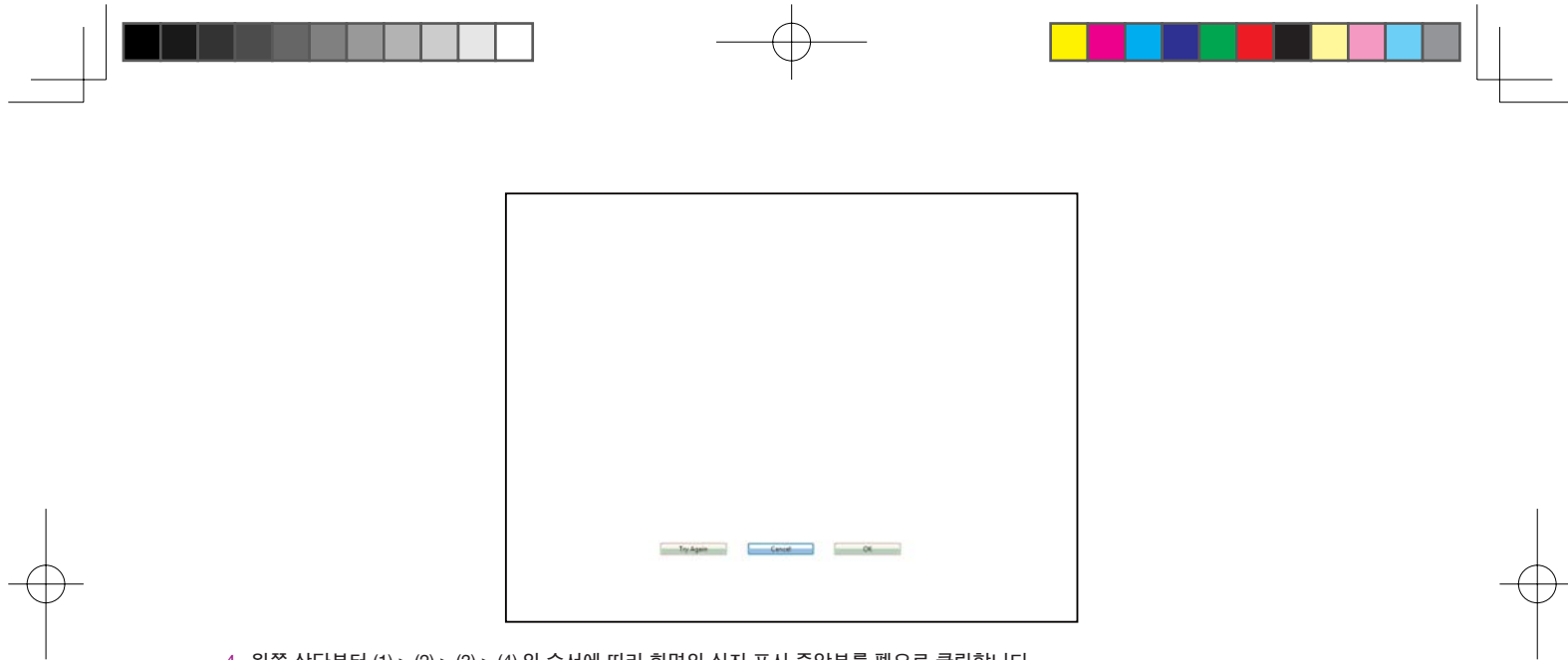
## 본 제품 보정하기

최적의 성능을 위해서는 본 제품을 보정하여 화면 커서를 디스플레이 화면의 펜 위치에 맞추어야 합니다. 이 작업은 보기 각도를 보정하고 시차를 조정하는 데 필요합니다. 본 제품을 작업 위치에 놓고 아래의 절차를 따르십시오.

- 1 펜 타블렛의 제어판을 엽니다.  
18 페이지를 참조하십시오.

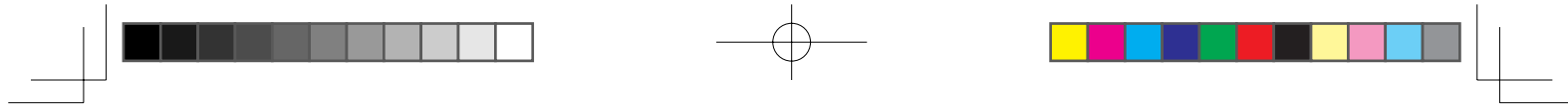


- 2 [Position Adjustment( 위치 조정 )] 탭을 클릭합니다.
- 3 [Calibrate...( 보정 ...)] 를 클릭합니다.

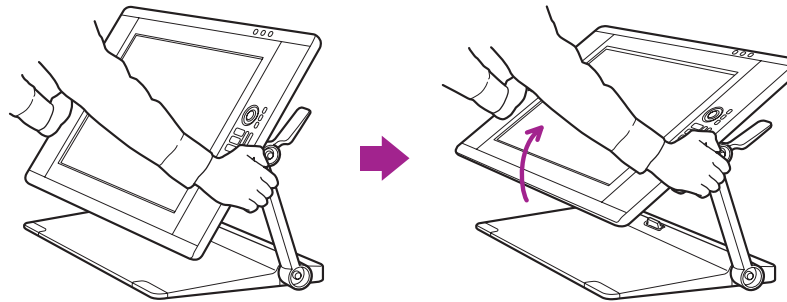


- 4 왼쪽 상단부터 (1) > (2) > (3) > (4)의 순서에 따라 화면의 십자 표시 중앙부를 펜으로 클릭합니다.
- 십자 표시가 사라지면 위치 조정이 완료된 것입니다.
  - Windows를 사용하는 경우 조정 내용을 저장한 후 [확인] (또는 [저장])을 클릭하고 제어판을 닫습니다.

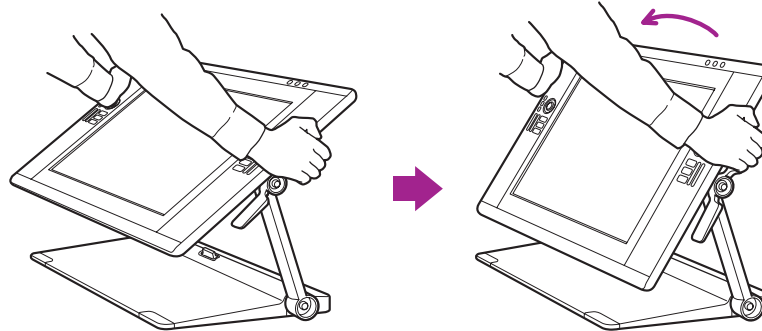




### 본 제품의 각도 변경하기

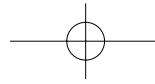


레버를 사용하여 디스플레이를 앞쪽으로 기울입니다.

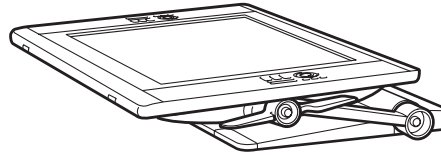


레버를 사용하여 디스플레이를 뒤쪽으로 기울입니다.

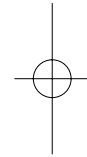
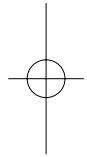
 **Note** 상단 또는 하단 레버로 디스플레이 각도를 변경할 수 있습니다.



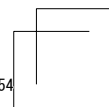
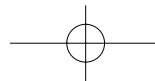
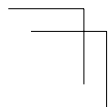
### 본 제품을 편안한 위치로 조정하기

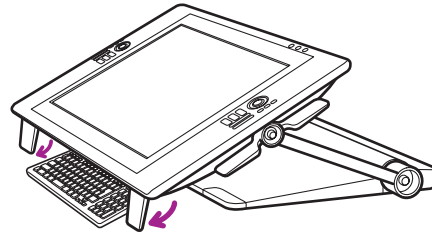
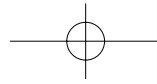


본 제품을 작업면에 거의 평평하게 눕혀 사용할 수 있습니다.

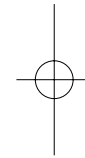
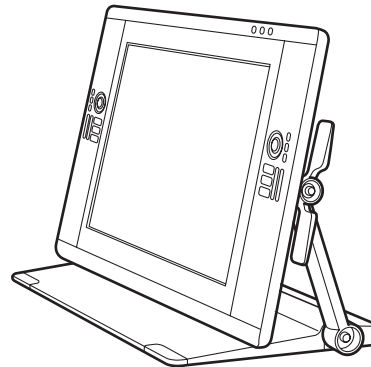
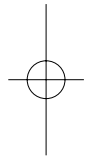


본 제품을 책상이나 테이블 모서리 아래로 내린 다음 무릎 위에 올려 놓고 높은 창의성이 요구되는 작업을 수행할 수 있습니다.  
자세한 내용은 14 페이지를 참조하십시오.

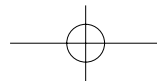
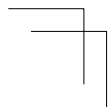


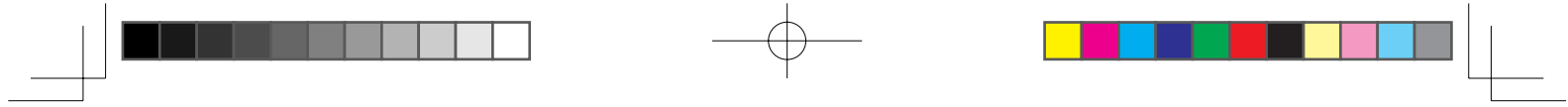


하단 모서리의 다리를 접으면 키보드 위치를 낮출 수 있습니다.

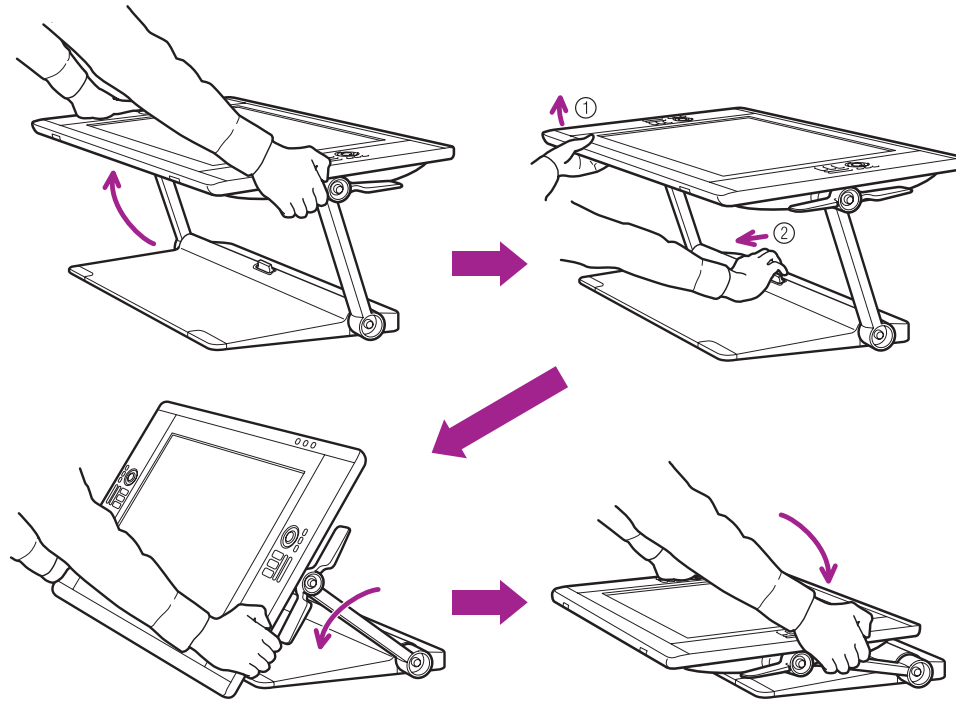


본 제품을 수직으로 세워 디스플레이로 사용할 수 있습니다.

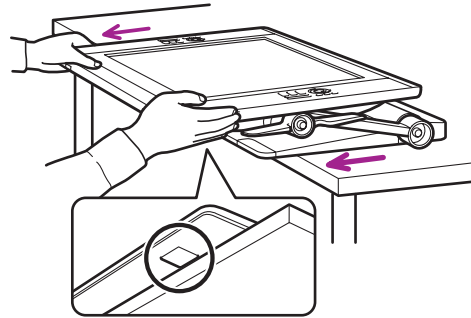
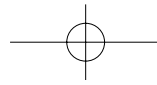




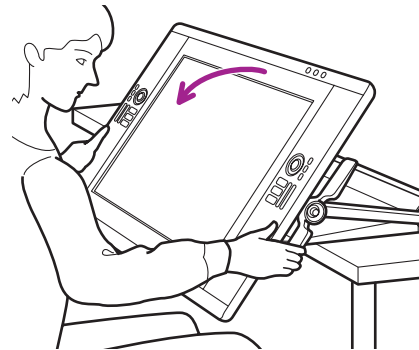
본 제품을 무릎 위에 올려놓기



1 디스플레이를 평평한 위치에 놓습니다.

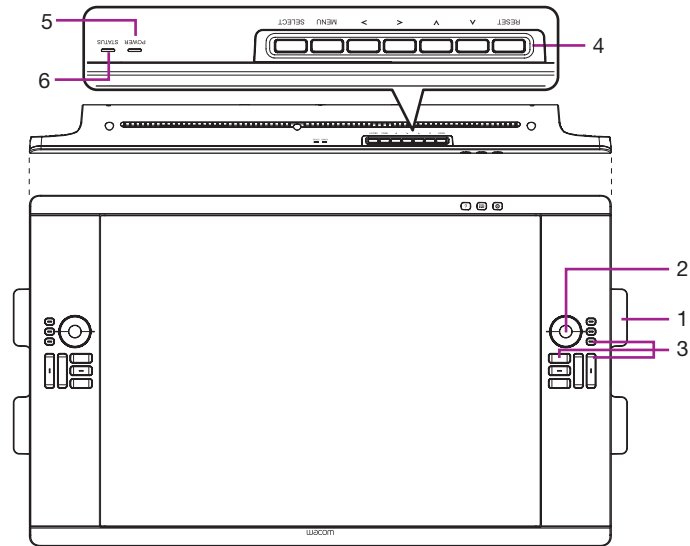


2 책상을 벗어나거나 잠겼다고 느낄 때까지 디스플레이를 앞쪽으로 잡아당깁니다. (책상 표면과 마찰되어 디스플레이가 안전한 위치를 벗어나지 않도록 방지하는 고무 패드가 밑부분에 달려 있습니다.)



3 기울기 조정 레버를 사용하여 필요에 따라 각도를 조정합니다.

## 본 제품에 대해 알아보기



### 1. 기울기 조정 레버

### 2. 터치 링

기본적으로 터치 링을 사용하면 대부분의 그래픽 애플리케이션을 확대하고 다른 애플리케이션을 스크롤할 수 있습니다. 모드 버튼을 누르면 사용자가 정의할 수 있는 세 가지 상태 간에 전환됩니다.

### 3. 익스프레스 키

이러한 키는 수정자 키, 키 입력 및 기타 자주 사용하는 기능을 시뮬레이션합니다.

36

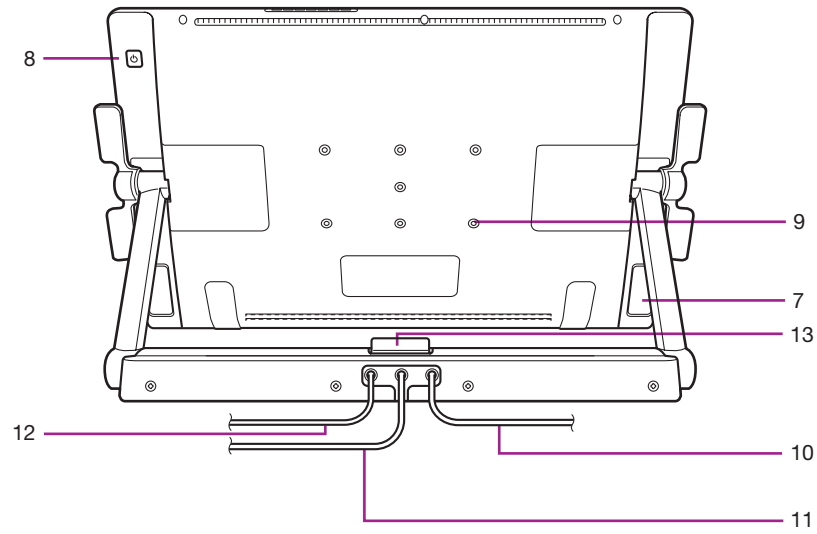
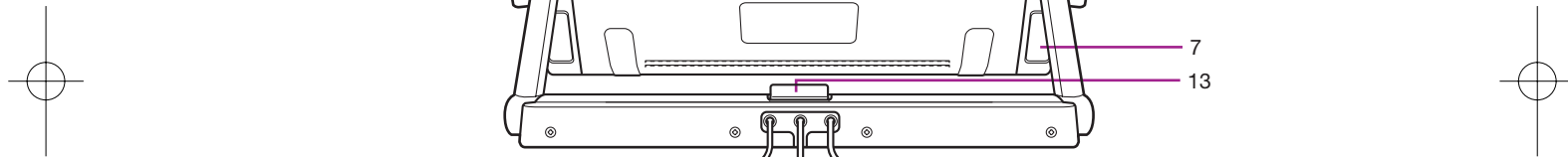
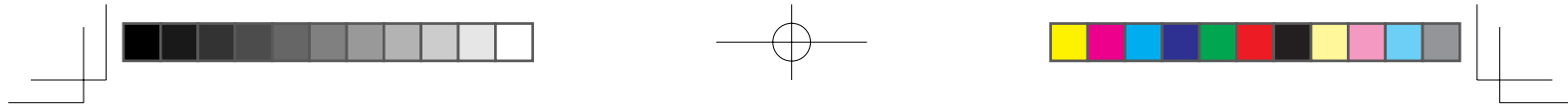
### 4. OSD 버튼

이러한 버튼을 사용하면 다양한 디스플레이 설정을 조정할 수 있습니다.

### 5. 전원 LED

### 6. 상태 LED

*Note* 이러한 기능과 다른 기능에 대한 자세한 내용은 사용설명서를 참조하십시오.



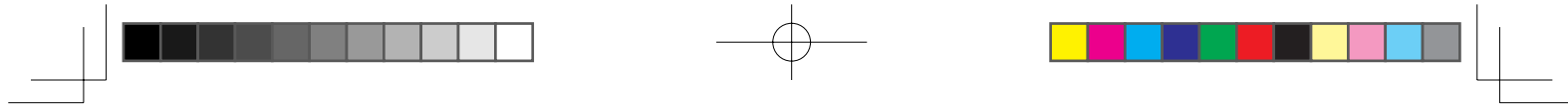
- |                |                  |
|----------------|------------------|
| 7. 받침 다리       | 11. DVI 케이블      |
| 8. 전원 스위치      | 12. USB 케이블      |
| 9. VESA 마운트 구멍 | 13. 스탠드 잠금 해제 레버 |
| 10. 전원 케이블     |                  |

## 제품 사양

### 일반 사양

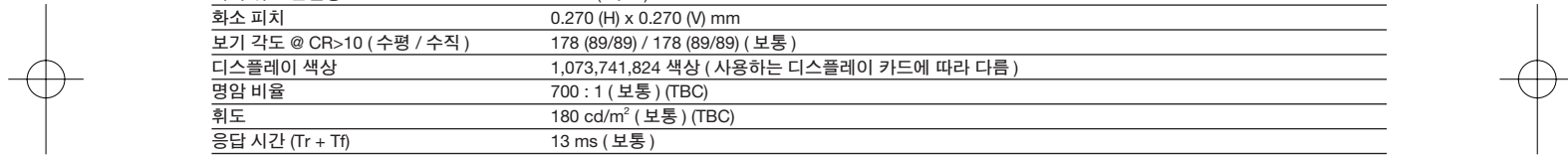
모델 / 브랜드	DTK-2400 ( 코드명 : Osprey ) 펜 전용 모델
크기 ( 너비 x 높이 x 깊이 )	769.3 x 463.74 x 64 mm ( 스탠드 제외 )
중량	본체 : 10.0 kg, 타블렛 스탠드 : 14.0 kg (TBC)
작동 온도 및 습도	5° ~ 35° C, 습도 : 20 ~ 80 % RH ( 비응축 )
보관 온도 및 습도	-10° ~ 60° C, 습도 : 20 ~ 90 % RH ( 비응축 ) ( 온도 60° C 에서 최대 보관 가능 습도 38 %, 습도 90 % 에서 최대 보관 가능 온도 42° C )
인증 및 허가	VCCI Class B, FCC Part15 Subpart B(class B) 및 C, CE, KCC, BSMI, C-tick CB, CCC, GOST-R, China RoHS, Korean RoHS, EU RoHS
호환성	Windows7 / Vista / Vista x64 / XP / XP x64 Mac OS X 10.4 이상
스탠드	스탠드 스타일은 유연하게 변경할 수 있습니다 .
인터페이스 케이블	DisplayPort, DVI-I, DVI-A, USB
커버 플레이트	AG 에칭 글래스 ( 템퍼링 클래스 )
입력 전압	24 VDC
전원 관리	VESA DPMS
AC 어댑터인 경우의 소비 전력	80 W ( 최대 ) (TBC) 절전 모드에서 2 W 이하 (USB 연결 안함) 오프 모드에서 1 W 이하
USB 허브	업스트림 : 1    다운스트림 : 2 ( 내부 ; 1, 외부 ; 1 ) 로드 전류 : 최대 0.5 A / 포트

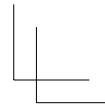
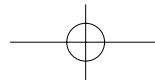




## 디스플레이

디스플레이 패널	비정질 실리콘 (a-Si) TFT 액티브 매트릭스 LCD (A-IPS)
화면 크기	24.1 인치 (618.4 x 324.0 mm)
화면비율	16:10
화소 수	1920 x 1200
입력 비디오 커넥터	DisplayPort, DVI-I (29 핀)
입력 비디오 신호	DisplayPort, 표준 V1.1a 준수, HDCP 에 해당 DVI 1.0 규격 아날로그 RGB
출력 비디오 커넥터	비디오 출력 없음
출력 비디오 신호	비디오 출력 없음
지원 해상도	1920 x 1200, 1600 x 1200, 1280 x 1024, 1024 x 768, 800 x 600, 640 x 480 화소
백색 휘도 균일성	75 % (최소)
화소 피치	0.270 (H) x 0.270 (V) mm
보기 각도 @ CR>10 (수평 / 수직)	178 (89/89) / 178 (89/89) (보통)
디스플레이 색상	1,073,741,824 색상 (사용하는 디스플레이 카드에 따라 다름)
명암 비율	700 : 1 (보통) (TBC)
휘도	180 cd/m <sup>2</sup> (보통) (TBC)
응답 시간 (Tr + Tf)	13 ms (보통)
OSD 수동 제어	밝기, 대비, 피치, 위상, 수직 위치, 투명도, 자동 조정, 수평 위치, 언어, 백라이트, 메뉴 위치, 초기화, 화면비율, 색 온도 (9300K / 6500K / 5000K / 사용자 설정 / 다이렉트)
플러그 앤 플레이	DDC 2B, DDC/CI
LCD 품질	각 LCD 패널은 매우 엄격한 품질 기준에 따라 생산됩니다. 그러나 현재의 생산 기술로는 완전 무결점의 TFT 디스플레이를 보장할 수는 없습니다. 외관은 화소가 항상 흰색이거나 항상 검정색으로 유지되게 하지 않습니다. 컬러 스펙트럼의 일부에 극소수의 화소가 잘못된 색상으로 표시될 수 있습니다. 이것은 디스플레이의 결함은 아닙니다.





### 펜 타블릿

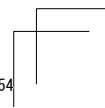
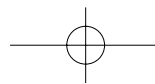
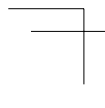
감지 기술	전자기파 공명 감지 기술
작업영역	518.4 x 324.0 mm
해상도	0.005 mm / 포인트 (5080 lpi)
정밀도	± 0.5 mm (중앙), 엣지 영역 1 (디스플레이 영역의 엣지로부터 20 mm 쪽) ± 2.0 mm, 엣지 영역 2 (디스플레이 영역의 엣지로부터 3 mm 쪽) ± 4.0 mm
감지 높이	5 mm 이상 (중앙)
정밀도 보증 높이	커버 플레이트에서 0 mm
최대 전송율	133 포인트 / 초
최대 펜 기울기 범위	수직으로 40 도 (코너 제외)
펜 기울기 레벨	± 60 레벨
압력 레벨	2048 레벨
통신 인터페이스	USB
스타일러스 펜	KP-501E-01

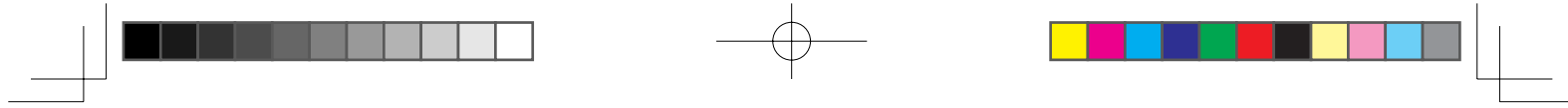
### 전원 어댑터

입력 전압	100 ~ 240 VAC, 50/60 Hz
출력 전압	24 VDC, 5.0 A (최대)

### 그립 펜 KP-501E-01

펜촉 거리	최대 1.0 mm
압력 레벨	2048 레벨
지우개촉 거리	최대 2.0 mm
크기 (길이 * 깊이)	156.5 x 14.9 mm
중량	약 17 g





## 본 제품 사용자 정의하기

와콤 타블렛 제어판을 엽니다.

Windows - [ 시작 ] >> [ ( 모든 ) 프로그램 ] >> [ XXXX ] >> [ XXXX 등록정보 ] 를 클릭합니다.

Mac - [ 시스템 환경설정 ] >> [ XXXX ] 를 선택합니다.



**Note** 생산성 향상을 위해 익스프레스 키와 레디얼 메뉴를 사용자 정의하는 방법은 사용설명서를 참조하십시오.

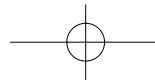
## 본 제품 등록하기

### 지원 옵션

사용설명서의 기술 노트 또는 문제 해결 부분을 확인하십시오.

자사 웹 사이트 ([www.wacom.com/product support](http://www.wacom.com/product support)) 를 방문하십시오.

와콤 고객 지원 센터로 문의하십시오. 월요일 - 목요일의 경우 오전 7:30 부터 오후 5:00 까지, 금요일의 경우 오전 8:30 부터 오후 5:00(태평양 시간 기준) 까지 360-896-9833 으로 영어 지원 서비스를 받을 수 있습니다.



## 關於本產品的注意事項

- 使用正常的數位筆和本產品之前，先安裝驅動程式軟體。
- 下列說明與支援資訊提供關於本產品的資訊。

### 說明與支援資訊

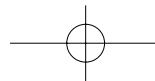
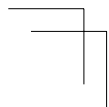
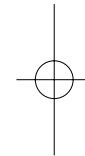
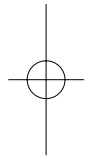
### 說明

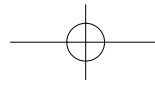
說明與支援資訊	說明
使用手冊	PDF 文件
重要產品資訊	PDF 文件
快速入門指南 (本文件)	列印文件

安裝了驅動程式軟體後，使用手冊會下載到電腦。  
請參閱使用手冊來瞭解更換纜線、使用 VESA 安裝座、故障排除等實用資訊。

安裝 CD 內含重要產品資訊。其中包括注意事項、產品規格及其他重要資訊。

快速入門指南提供本產品的一般概述，包括如何使用產品、如何連接至 PC 的資訊。





## 歡迎訊息

親愛的客戶，

感謝您購買本產品。

許多客戶認為本產品對提高工作效率及獲取更多創意至關重要。因此已成為其工作流程中不可或缺的一部分。非常感謝您對我們的信任，我們將竭盡全力為您提供最佳創意工具。

本產品入市之前，我們曾與多位客戶面談，並將其建議納入新版產品中，包括比舊款產品更大的尺寸、解析度及色域。

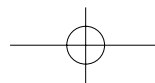
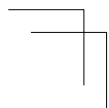
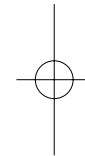
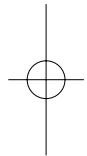
我們也注意到許多使用者長時間使用本產品，以應對各個專案的限期，因此飽受肩酸背痛之苦。本產品採用人體工學設計，能以各種不同的角度和位置擺放在桌面上。如何使產品用起來更舒適、更輕鬆，也是我們研發新產品的主要目標之一。

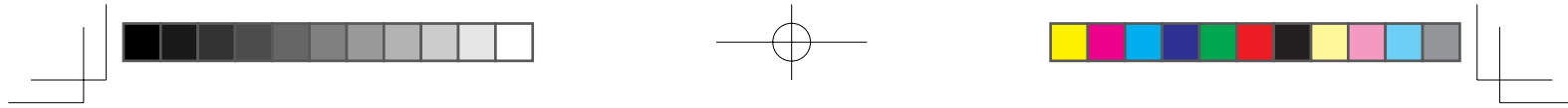
本款新產品另有多項增強和改良功能。開始使用之前，請閱讀快速入門指南，充分瞭解本產品的功能。

我們至誠敬祝您的業務成功順利。

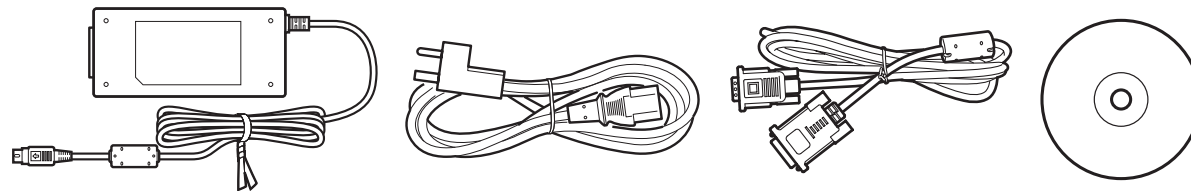
謝謝

液晶數位板開發小組

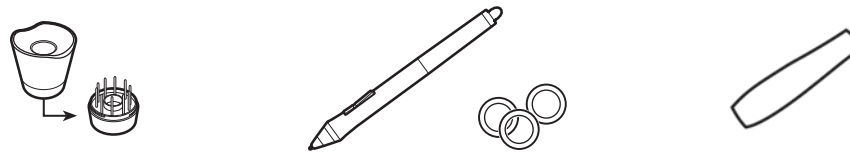
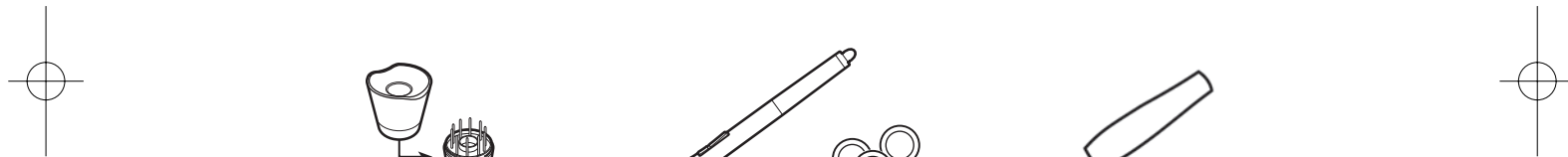




### 隨附配件



並非所有型號均附帶配件。請核對產品包裝上的清單。

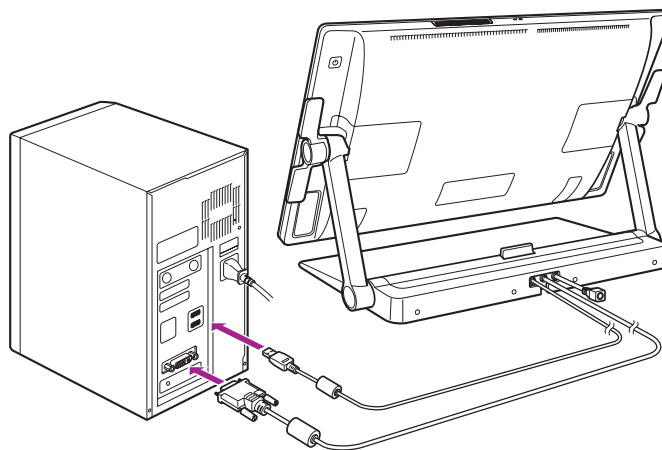


請參閱使用手冊來更換筆尖和個人化數位筆。



如需關於安裝 VESA 安裝座的資訊，請參閱使用手冊。

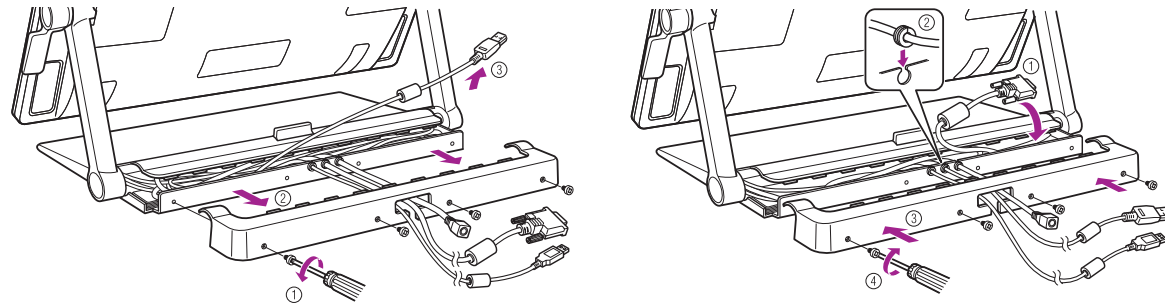
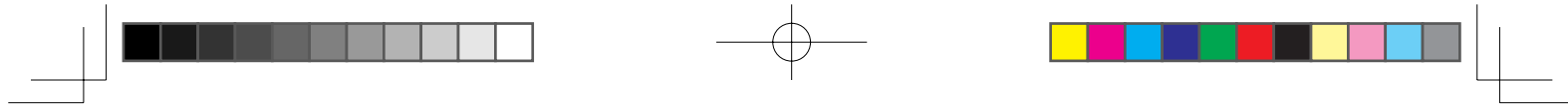
## 連接液晶數位板




- 1 關閉電腦電源。
- 2 將 DVI-D 纜線或 DisplayPort 纜線連接至電腦上對應的連接頭。請注意：DisplayPort 纜線隨附在腳座內。如需說明，請參閱下列頁面。



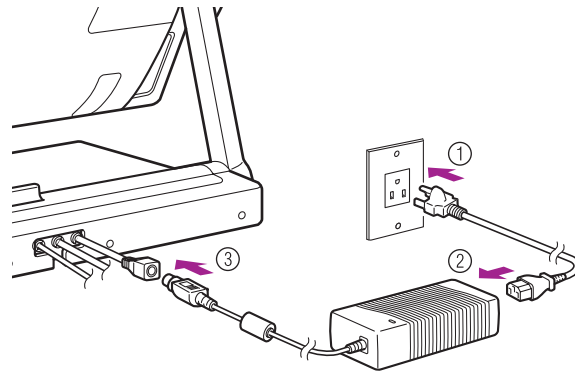
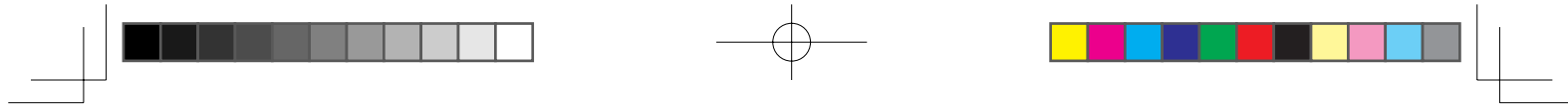
Note 亦可用隨附的 DVI-I 轉 VGA 纜線進行連接。如需詳細資訊，請參閱使用手冊。



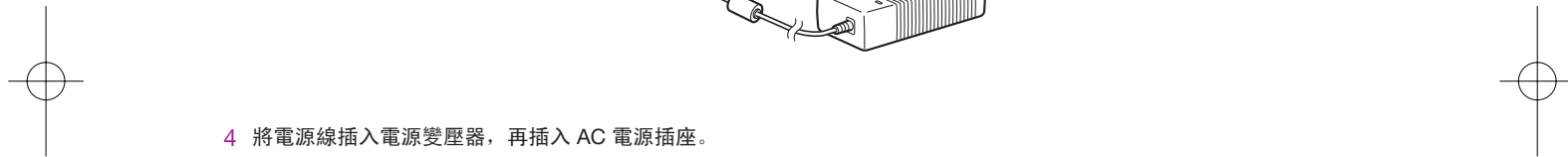
 **Note** 若使用 DisplayPort 纜線，請依圖所示，將其從腳座取下。

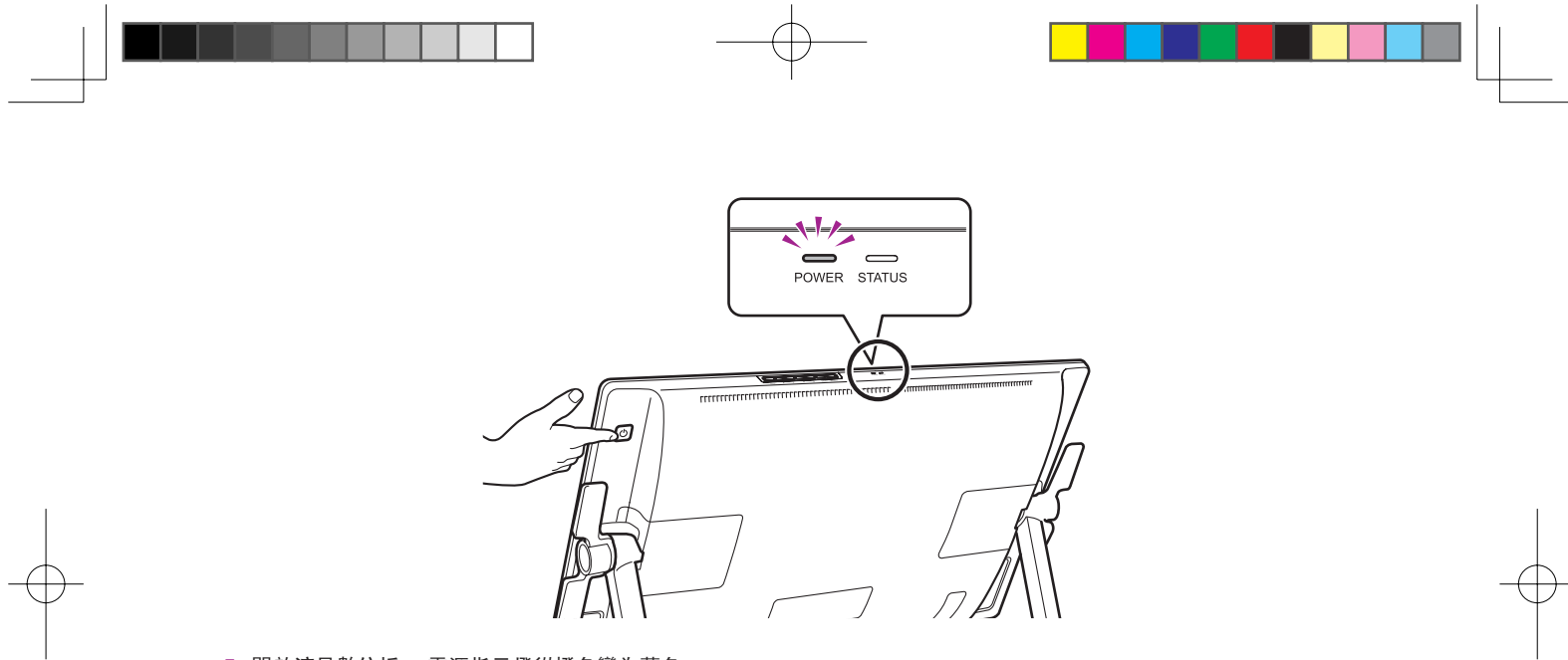
**3** 將 USB 連接頭插入電腦或連接至電腦的 USB 集線器上的可用 USB 埠。






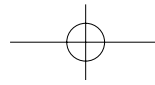
4 將電源線插入電源變壓器，再插入 AC 電源插座。





- 5 開啟液晶數位板。電源指示燈從橙色變為藍色。
- 6 開啟電腦電源。

 **Note** 如果連接了 DVI-I 轉 VGA 纜線，請按照顯示器的顯示調整色彩解析度及尺寸設定。  
然後，開啟選單螢幕，選擇 [螢幕設定] > [自動調整]。  
如需關於開啟選單螢幕的資訊，請參閱使用手冊。



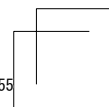
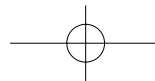
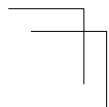
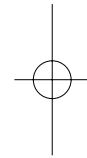
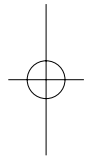
## 安裝數位板驅動程式

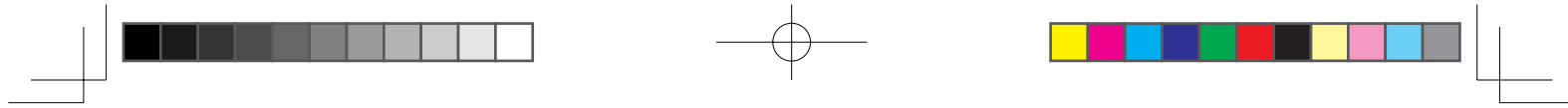
請儲存您的工作並關閉所有開啟的應用程式。

- 1 插入本產品的安裝 CD。若未自動顯示軟體安裝程式選單，請按兩下 CD 上的 [安裝] 圖示。
- 2 在顯示的對話方塊中，按一下 [安裝數位板]，然後根據提示操作。



安裝了驅動程式軟體後，使用手冊會下載到電腦。  
按一下對話方塊中的 [重要產品資訊] 以檢視本產品的重要產品資訊。  
其中包括產品安全注意事項、規格及其他重要資訊。





## 校正液晶數位板

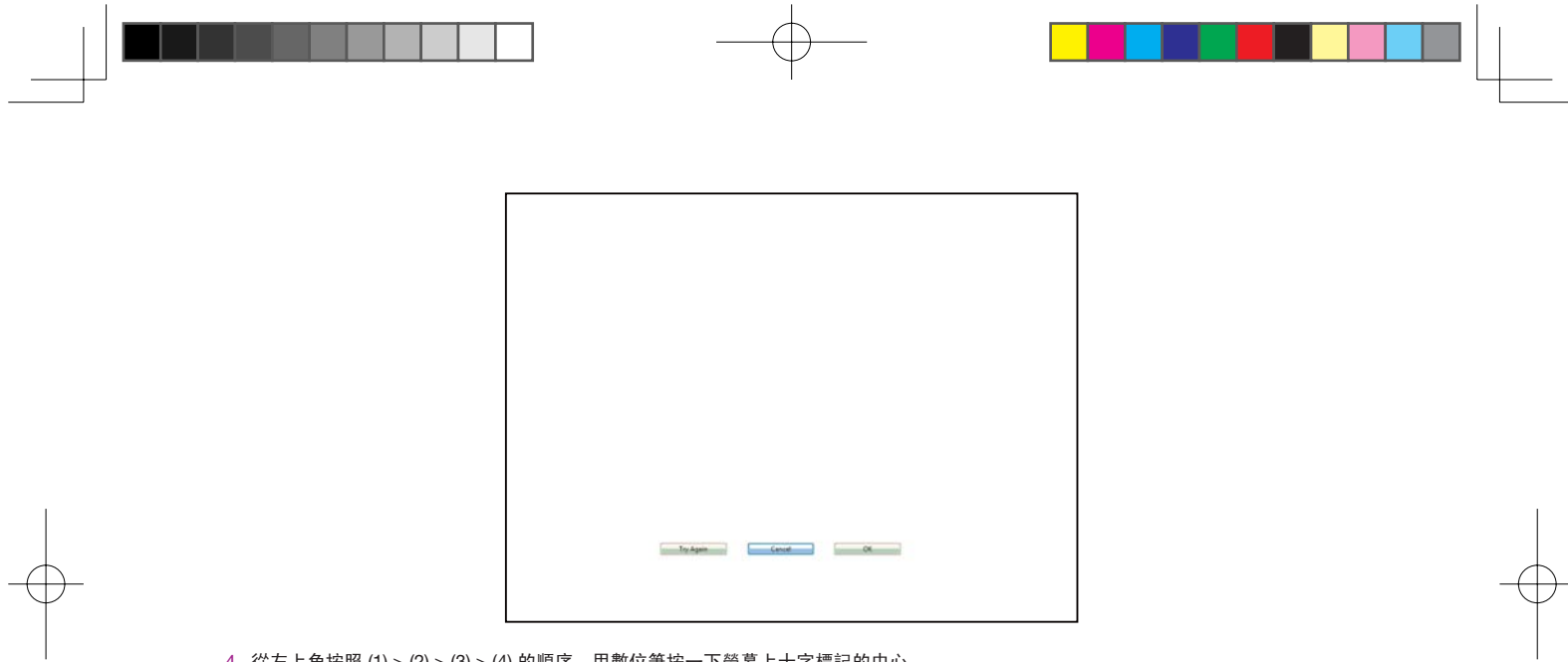
為獲得最佳效能，您必須校正液晶數位板，讓螢幕游標與顯示器螢幕上的數位筆位置對齊。若要調整視差，就必須進行此動作。請將液晶數位板放在工作位置，然後依照以下程序進行。

- 1 開啟數位板控制台。  
請參閱第 18 頁。

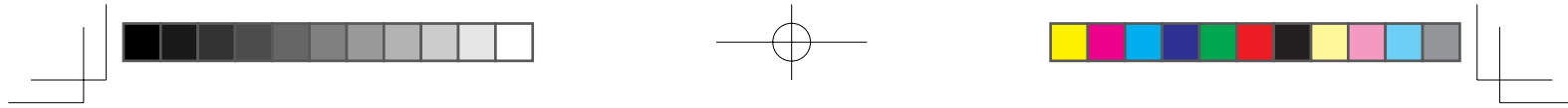


- 2 按一下 [ 位置調整 ] 標籤。
- 3 按一下 [ 校正 ... ]。

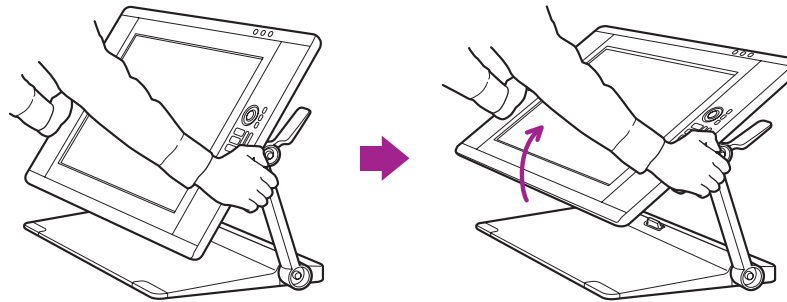
50



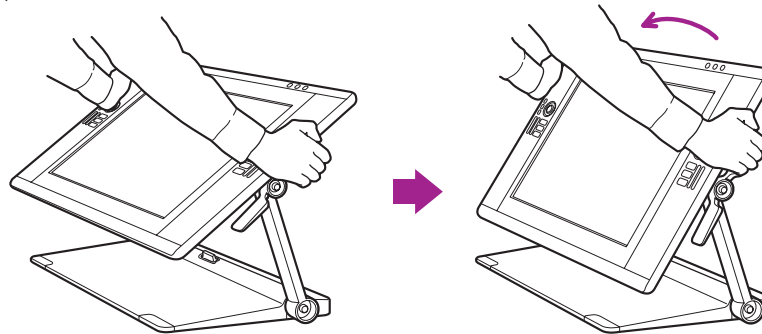
- 4 從左上角按照 (1) > (2) > (3) > (4) 的順序，用數位筆按一下螢幕上十字標記的中心。
- 十字標記消失後，位置調整完成。
  - 使用 Windows 系統時，按一下 [ 確定 ] (或 [ 儲存 ] )，在儲存調整內容後關閉控制台。




### 調整液晶數位板傾斜程度



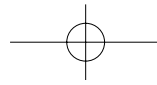
用調整桿使數位板前傾。



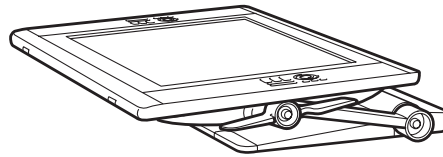
用調整桿使數位板後傾。

 **Note** 可用上/下調整桿調整數位板的角度。

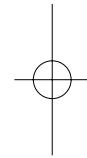
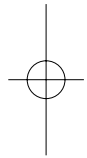
52



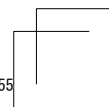
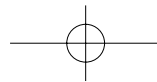
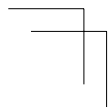
### 將液晶數位板調整到適當位置

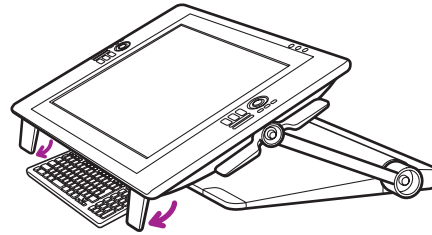
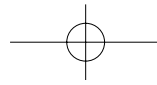


液晶數位板可調整到與工作面幾乎平行的角度。

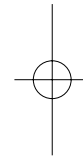
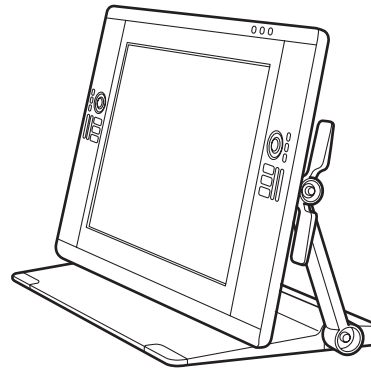
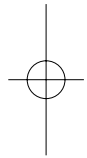


液晶數位板可調整到低於桌面邊緣的位置，以便放在膝部上進行創作。如需細節資訊，請參閱第 14 頁。

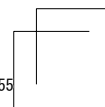
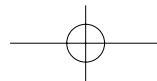
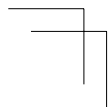




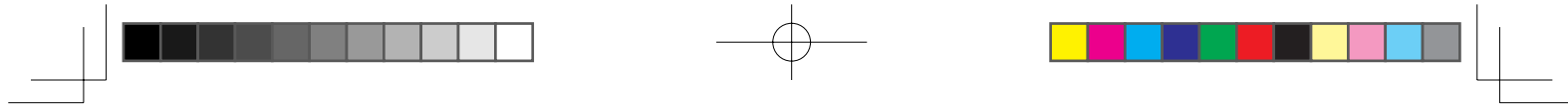
將底緣的支腳向下折平，以便將鍵盤放在下方。



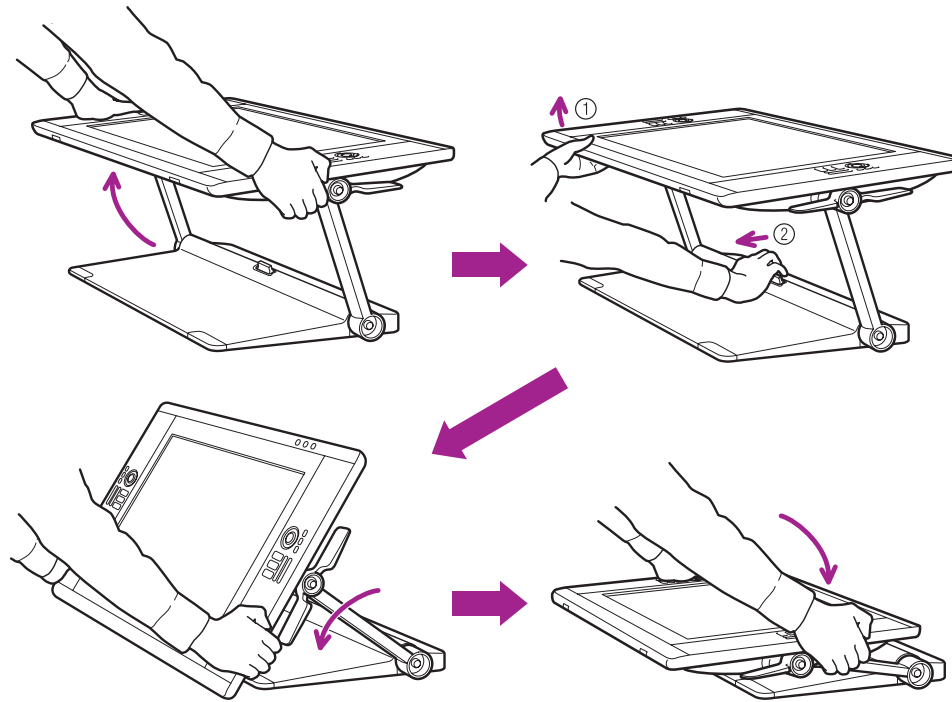
液晶數位板可當作顯示器（垂直擺放）來使用。



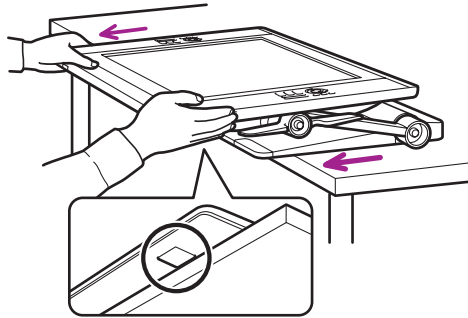
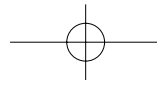




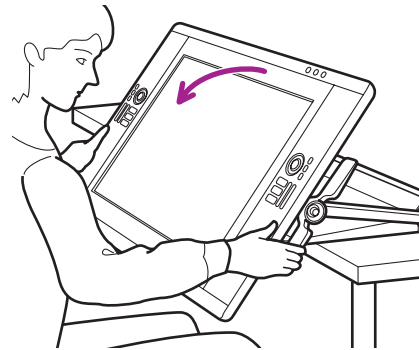
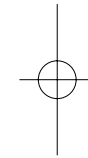
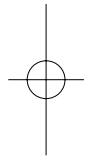
將液晶數位板置於膝部上



1 將數位板置於水平位置。

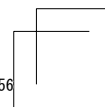
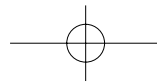
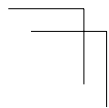


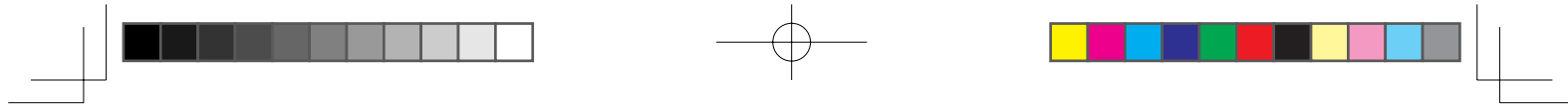
2 將數位板向前拉出桌面或直到數位板鎖定位。(數位板底座有橡膠墊片，供桌面固著以防滑動。)



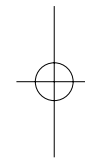
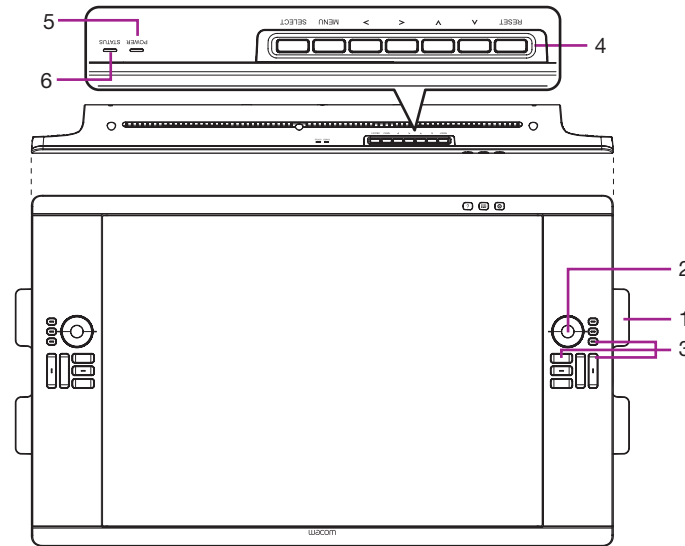
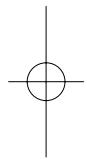
3 必要時用傾斜桿調整角度。

56






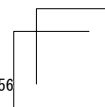
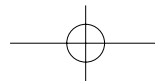
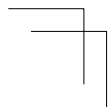
## 瞭解液晶數位板

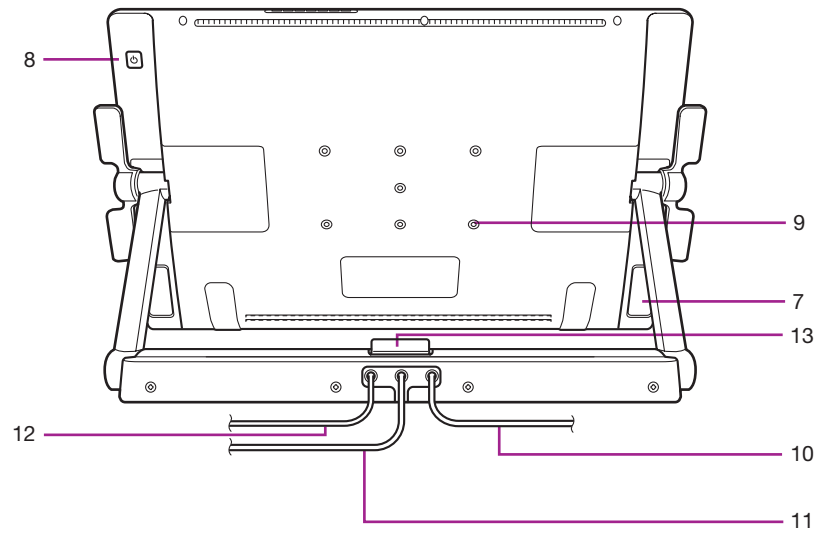
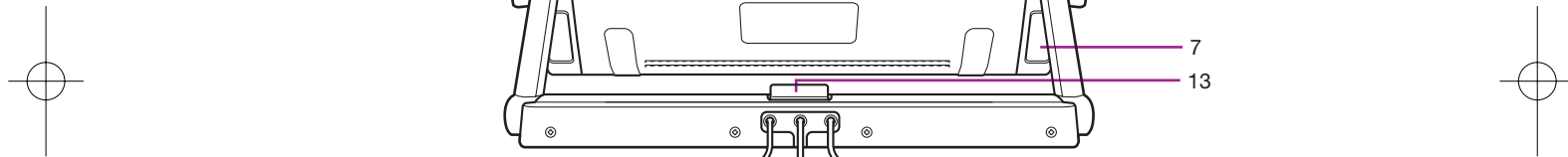
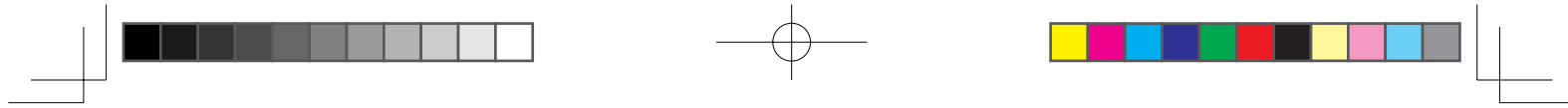


1. 傾斜桿
2. 觸控環  
根據預設，觸控環在大多數圖形應用程式中用於縮放畫面，而在其他應用程式中用於捲動畫面。按下模式按鈕，在三種可自訂狀態之間切換。
3. 快速鍵  
用於模擬編輯器按鍵、鍵盤及其他常用功能。

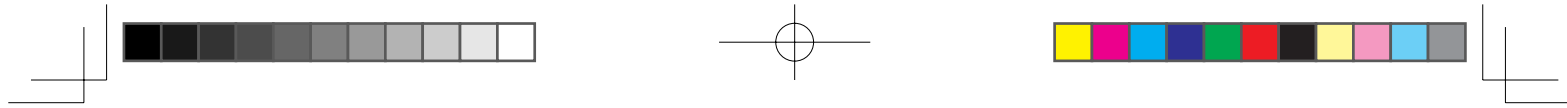
4. OSD 按鈕  
用於調整各種顯示器設定。
5. 電源指示燈
6. 狀態指示燈

 **Note** 如需關於這些及其他功能的細節資訊，請參閱使用手冊。





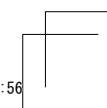
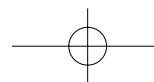
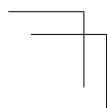
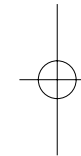
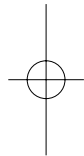
- |              |             |
|--------------|-------------|
| 7. 支撐腳       | 11. DVI 纜線  |
| 8. 電源開關      | 12. USB 纜線  |
| 9. VESA 安裝座孔 | 13. 腳座鎖定釋放桿 |
| 10. 電源線      |             |

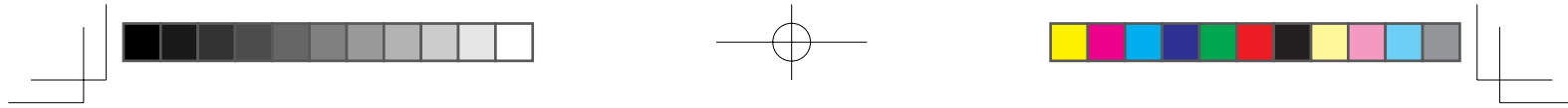


## 產品規格

### 一般規格

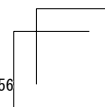
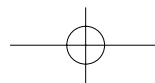
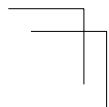
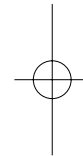
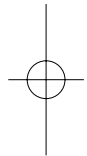
型號 / 品牌	DTK-2400 (代碼名稱: Osprey) 僅限數位筆機型
尺寸 (寬 x 長 x 高)	769.3 x 463.74 x 64 公釐 (不含腳座)
重量	機身: 10.0 kg, 數位板腳座: 14.0 kg (未完成)
操作溫度及濕度	溫度: 5 ~ 35 °C, 濕度: 20 % ~ 80 % RH (未凝結)
存放溫度及濕度	溫度: -10 ~ 60 °C, 濕度: 20 % ~ 90 % RH (未凝結) (最大存放濕度在溫度 60 °C 時為 38 %, 最大存放溫度在濕度 90 % 時為 42 °C)
證書與規範	VCCI Class B, FCC Part15 Subpart B(class B) and C, CE, KCC, BSMI, C-tick CB, CCC, GOST-R, China RoHS, Korean RoHS, EU RoHS
相容性	Windows7 / Vista / Vista x64 / XP / XP x64 Mac OS X 10.4 或以上版本
腳座	腳座樣式可以靈活調整。
介面纜線	DisplayPort, DVI-D, DVI-A, USB
蓋板	AG 蝕刻玻璃 (堅固玻璃)
輸入電壓	24 VDC
電源管理	VESA DPMS
電源消耗 (使用 AC 變壓器)	80 W (最大) (未完成) 2 W 或以下 (睡眠模式) (未連接 USB) 1 W 或以下 (關機模式)
USB 集線器	上游: 1 下游: 2 (內部: 1, 外部: 1) 每埠負載電流最大 0.5A。

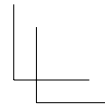
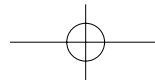




## 顯示器

顯示器面板	a-Si 主動式矩陣 TFT LCD (A-IPS)
螢幕尺寸	24.1 英寸 (518.4 x 324.0 公釐)
長寬比	16:10
像素	1920 x 1200
輸入視訊接頭	DisplayPort、DVI-I (29 針)
輸入視訊訊號	DisplayPort 符合 V1.1a 標準, 適用於 HDCP DVI 1.0 規範 類比 RGB
輸出視訊接頭	無視訊輸出
輸出視訊訊號	
支援的解析度	1920 x 1200、1600 x 1200、1280 x 1024、1024 x 768、800 x 600、640 x 480 像素
白畫面均勻度	75 % (最小)
像素點間距	0.270 (水平) x 0.270 (垂直) 公釐
檢視角度 @ CR>10 (水平 / 垂直)	178(89/89) / 178(89/89) (標準)
顯示色彩	1,073,741,824 色 (視所用的顯示卡而定。)
對比	700:1 (標準) (未完成)
亮度	180 cd/m <sup>2</sup> (標準) (未完成)
回應時間 (Tr+Tf)	13 毫秒 (標準)
OSD 手動控制	亮度、對比、點間距、點相位、垂直位置、透明度、自動調整、 水平位置、語言、背光、選單位置、重置、顯示模式、 色溫 (9300K/6500K/5000K/ 使用者自訂 / 原色溫)
隨插即用	DDC 2B, DDC/CI
LCD 品質	每片 LCD 面板均以非常嚴格的品質標準生產製造。但生產技術無法保證 TFT 顯示器絕對完美無瑕。Wacom 不允許面板上出現亮點或暗點。在色彩頻譜的某些部分允許少許像素顯示錯誤。這並不代表顯示器故障。





### 數位板

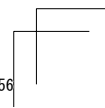
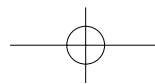
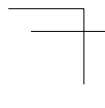
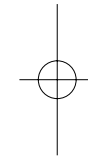
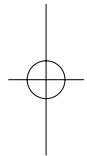
讀取技術	電磁共振技術
工作區	518.4 x 324.0 公釐
解析度	0.005 公釐 / 點 (5080 lpi)
精確度	± 0.5 公釐 (中央)、邊緣區 1 (從顯示區邊緣算起 20 公釐) ± 2.0 公釐, 邊緣區 2 (從顯示區邊緣算起 3 公釐) ± 4.0 公釐
讀取高度	5 公釐或以上 (中央)
精確感應高度	距蓋板 0 公釐
最大讀取速率	133 點 / 秒
數位筆最大傾斜範圍	距垂直線 40 度 (角落除外)
數位筆傾斜級數	± 60 級
壓力感應級數	2048 級
通訊介面	USB
觸控筆	KP-501E-01

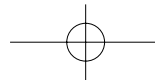
### 電源變壓器

輸入電壓	100 ~ 240 VAC、50/60Hz
輸出電壓	24 VDC、5.0 A (最大)

### 壓感筆 KP-501E-01

筆尖運行軌跡	最大 1.0 公釐
壓力感應級數	2048 級
橡皮擦端運行軌跡	最大 2.0 公釐
外形尺寸 (長 x 直徑)	156.5 x 14.9 公釐
重量	17 克, 近似值





## 自訂液晶數位板

開啟 Wacom 數位板控制台：

Windows – 按一下 [開始] >> [程式集 (所有程式)] >> [XXXX] >> [XXXX 屬性]。

Mac – 打開 [系統偏好] >> 選取 [XXXX]。



**Note** 請參閱使用手冊來學習如何自訂快速鍵及輻射式選單，以增強產品性能。

## 註冊液晶數位板

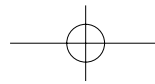
### 支援選項

請核對使用手冊內的技術要點或故障排除。

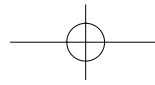
請造訪：[www.wacom.com/product support](http://www.wacom.com/product support)

請致電 Wacom 客戶服務中心：每週一至週四上午 7:30 至下午 5:00，

每週五上午 8:30 至下午 5:00 (太平洋時間)，電話 360-896-9833。(服務語言：英語)



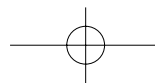
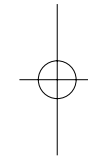
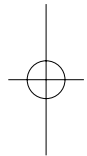


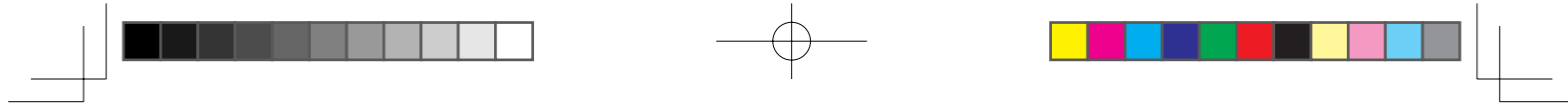


## 产品使用注意事项

- 请为正确的笔和本产品安装驱动程序软件。
- 以下帮助和支持信息提供有关本产品的相关信息。

帮助和支持信息		描述
用户手册	PDF 文档	用户手册会在安装驱动程序软件时下载到您的电脑。请参考用户手册以了解有用的信息（如更换电缆、使用 VESA 底座、疑难解答等等）。
重要的产品信息	PDF 文档	重要的产品信息包含于安装光盘中。其主要包括注意事项、产品规格以及其他重要信息。
快速入门指南 (本文档)	印制的文档	快速入门指南提供本产品的一般概述，包括例如如何使用产品以及如何将其连接到电脑的信息。





## 欢迎信息

尊敬的用户，

感谢您购买本款液晶数位板。

根据众多用户的反馈，本产品无论在其日常工作还是创意生活中都发挥了相当重要的作用。对于他们来说，本产品已经成为其工作生活的重要组成部分。我们对您的信任深表感激，并将努力为您提供最佳的创作工具。

在将本款最新产品投放市场之前，我们进行了大量的市场调研工作并认真处理了反馈意见。例如，我们在之前产品型号的基础上增大了产品尺寸、分辨率以及色域。

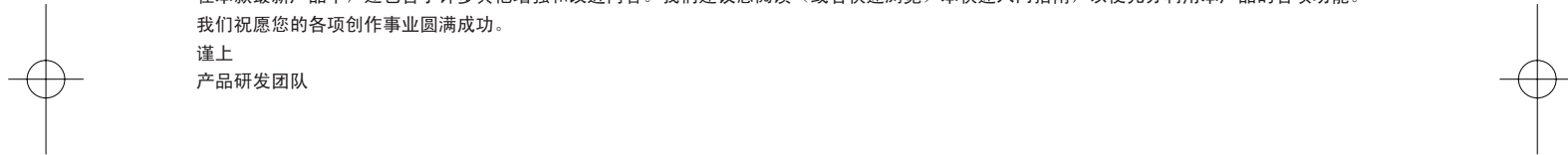
我们还注意到，有很大一部分用户常常会在一天中花费大量时间和精力辗转于多个项目之间力求完成限期的任务。其中就有一部分用户会因此而感到身体不适。因此，我们对本款产品进行了工作定位的人体工程学设计，让用户能够更为灵活地使用本产品。我们的宗旨之一就是为用户提供舒适易用的产品。

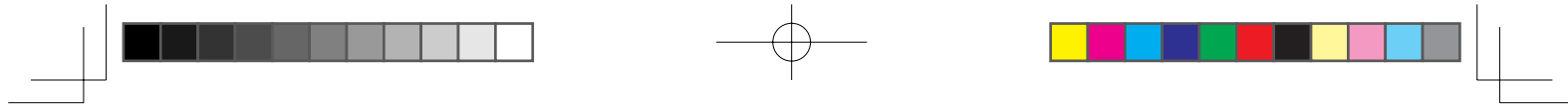
在本款最新产品中，还包含了许多其他增强和改进内容。我们建议您阅读（或者快速浏览）本快速入门指南，以便充分利用本产品的各项功能。

我们祝愿您的各项创作事业圆满成功。

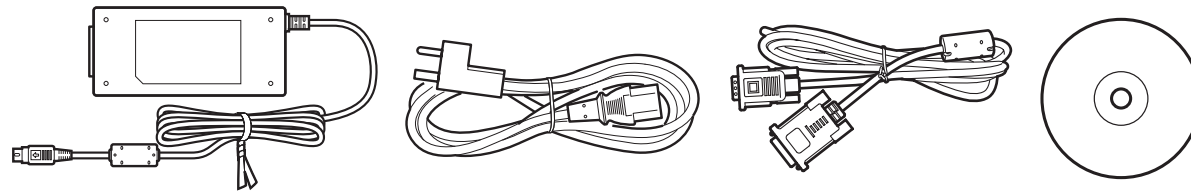
谨上

产品研发团队

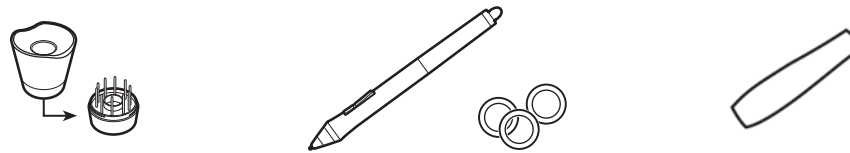
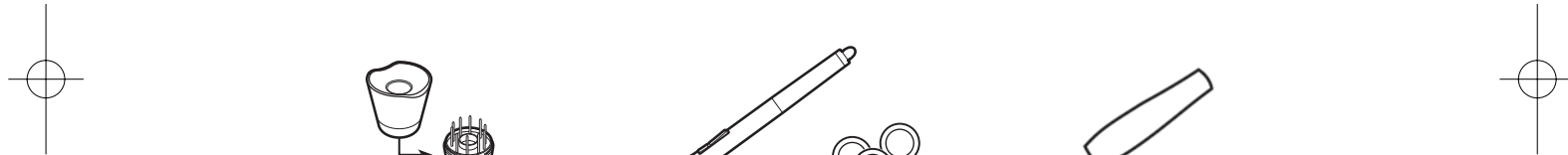




## 随附配件



并非所有型号都附带配件。请检查产品包装上的所列内容。

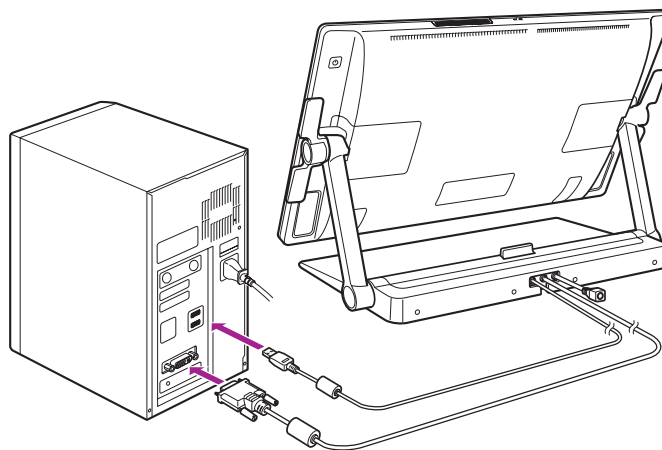


请参考用户手册更换笔尖和对笔进行个性化设置。



有关安装 VESA 底座的信息，请参考用户手册。

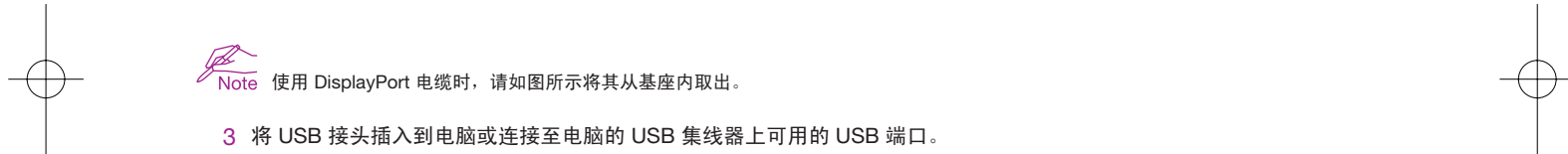
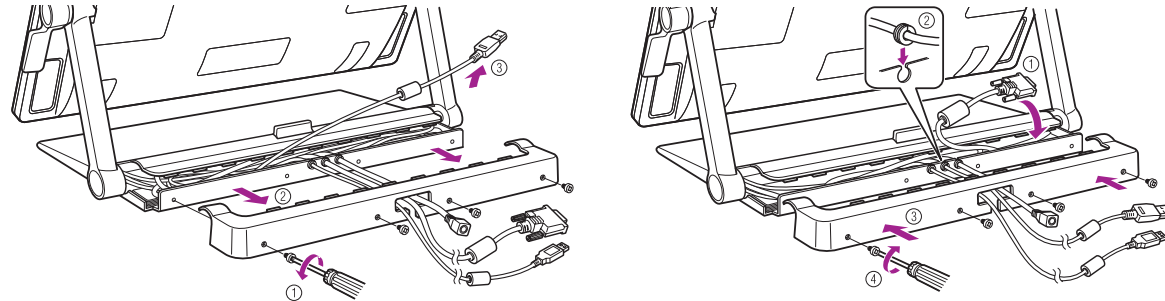
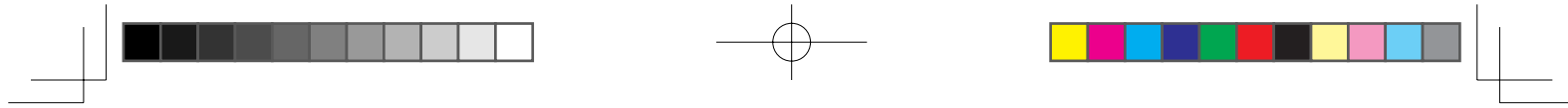
## 连接产品




- 1 关闭电脑。
- 2 将 DVI-D 电缆或 DisplayPort 电缆连接到电脑上的对应接口。请注意，DisplayPort 电缆出厂时随附在基座内。有关说明请参考下一页。

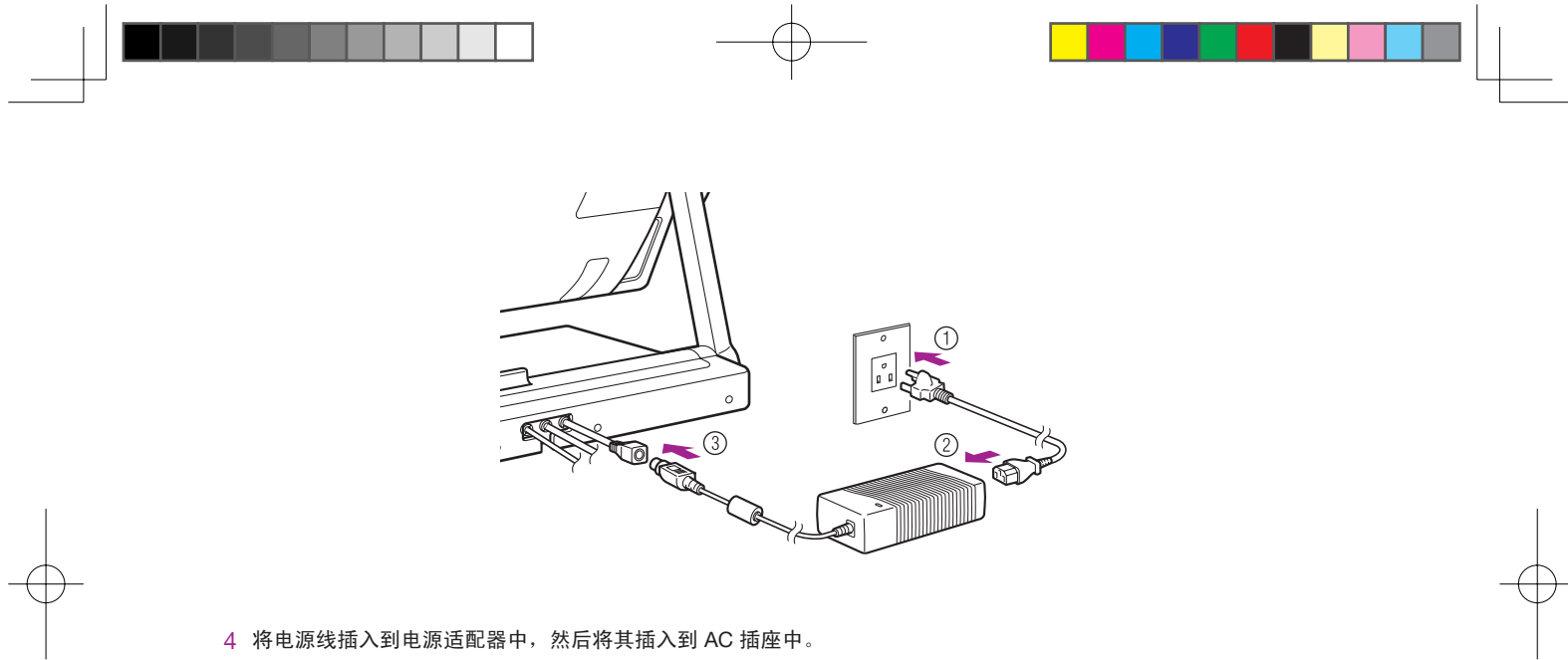


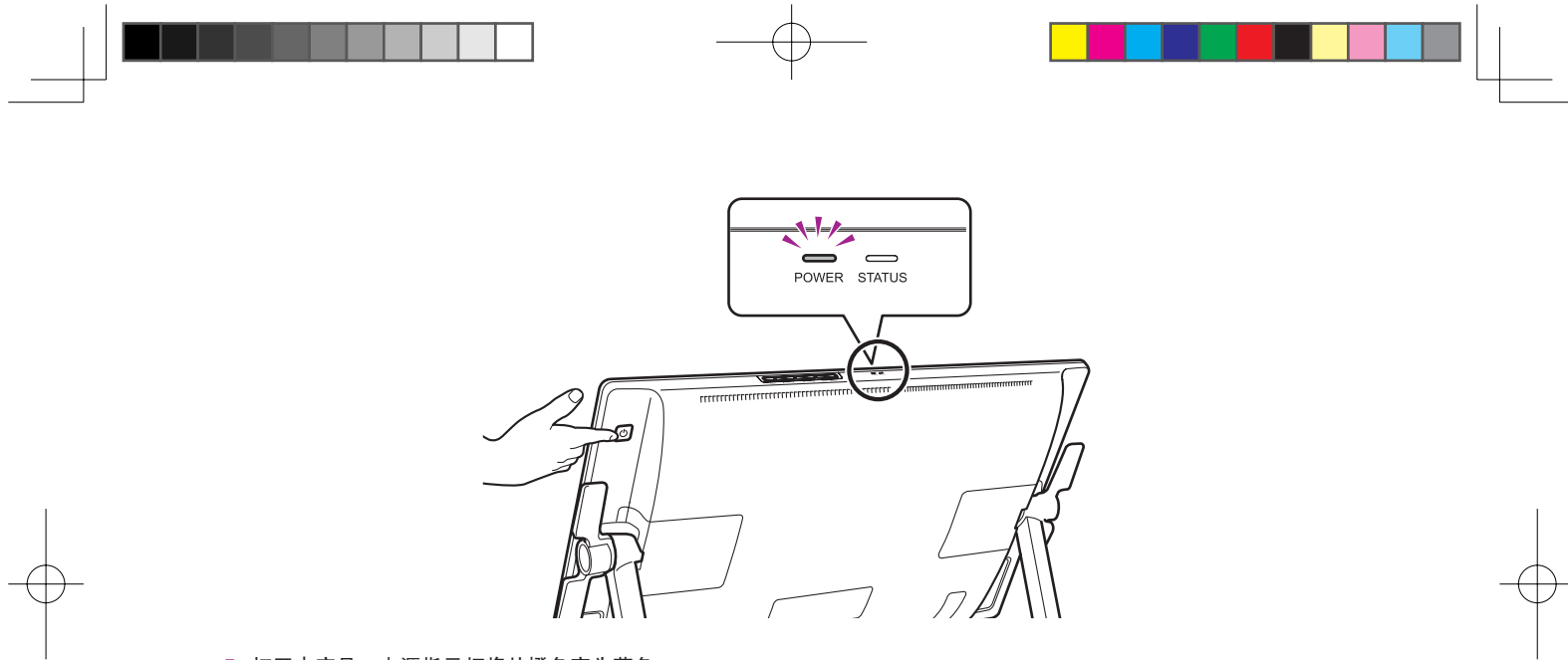
**Note** 也可以使用附带的 DVI-I 转 VGA 电缆进行连接。有关更多信息，请参考用户手册。



 **Note** 使用 DisplayPort 电缆时，请如图所示将其从基座内取出。


3 将 USB 接头插入到电脑或连接至电脑的 USB 集线器上可用的 USB 端口。

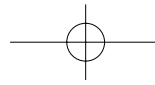




5 打开本产品。电源指示灯将从橙色变为蓝色。

6 打开电脑。

 **Note** 如果连接了 DVI-I 转 VGA 电缆，观看显示器时请配置颜色分辨率和尺寸设置。然后，打开菜单屏幕，并选择 [屏幕设置] > [自动调节]。有关如何打开菜单屏幕的信息，请参考用户手册。



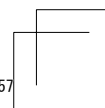
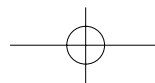
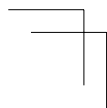
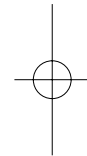
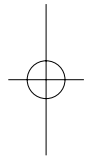
## 安装数位板驱动程序

保存工作并关闭所有打开的应用程序。

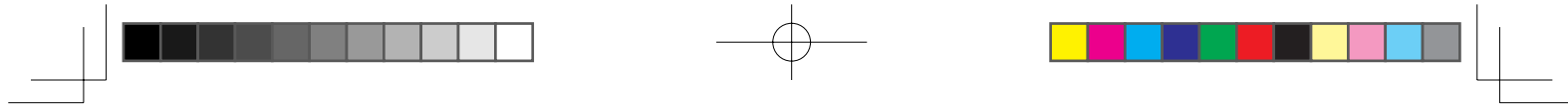
- 1 插入产品安装光盘。如果没有自动显示软件安装程序菜单，请双击光盘上的“安装”图标。
- 2 在显示的对话框中，点击“安装数位板”，然后按照提示进行安装。



用户手册会在安装驱动程序软件时下载到您的电脑。  
点击对话框中的“重要的产品信息”菜单，以查看本产品的重要的产品信息指南。  
其主要包括产品安全注意事项、规格以及其他重要信息。







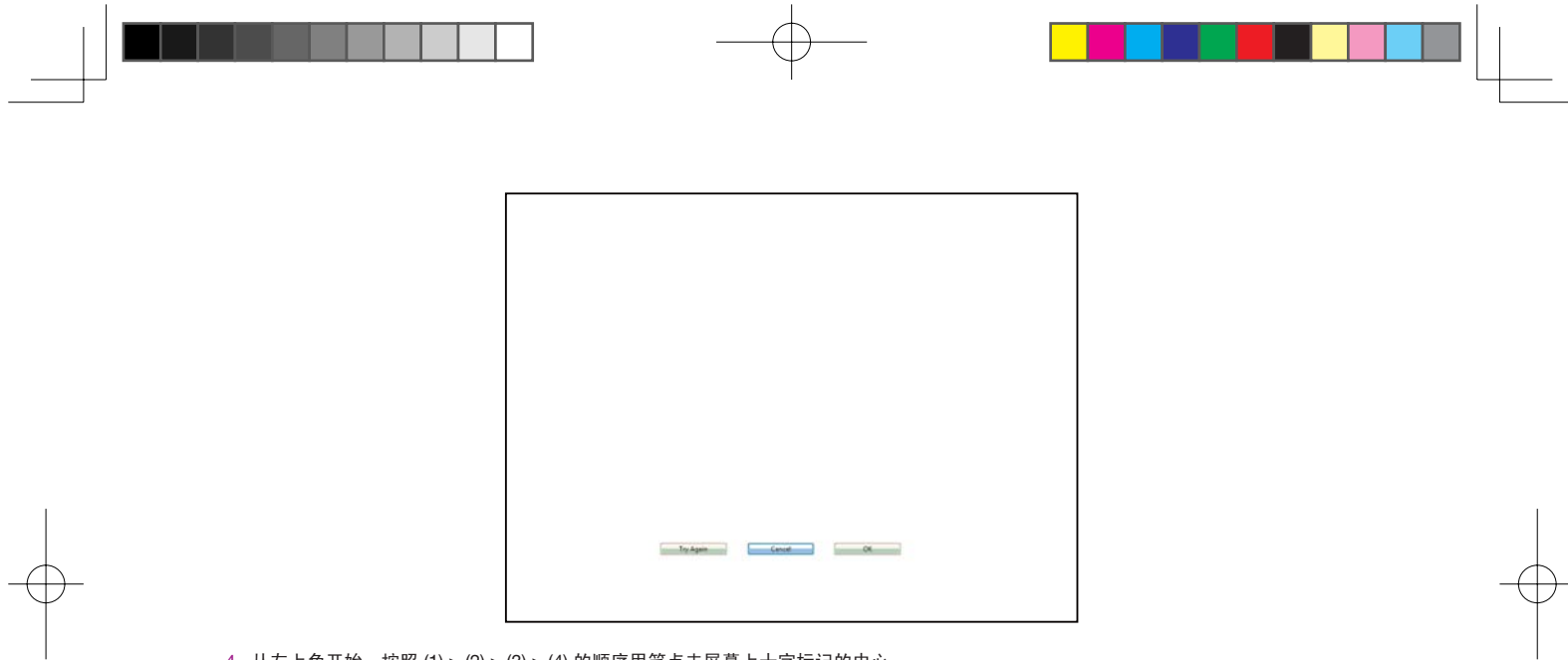
## 校正产品

为获得产品的最佳性能，您必须对本产品进行校正，使屏幕光标与显示屏上笔的位置对准。补偿观看角度及调节色差需要此项校正。请将液晶数位板置于作业位置，然后遵循以下内容操作。

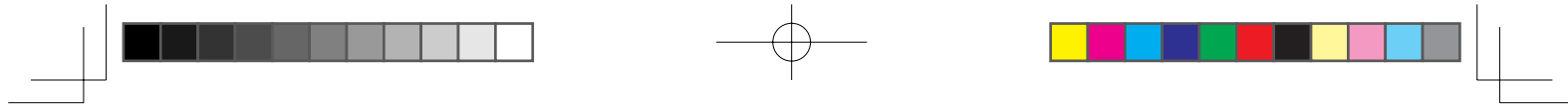
- 1 打开数位板的控制面板。  
参考第 18 页。



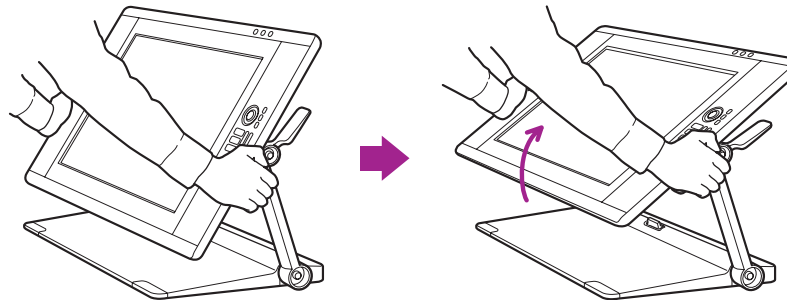
- 2 点击 [位置调整] 选项卡。
- 3 点击 [校正 ...]。



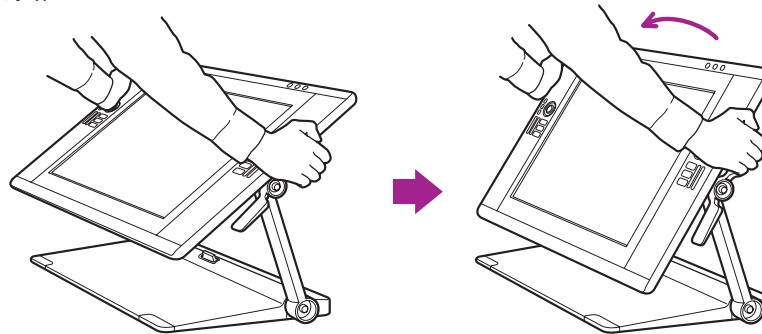
- 4 从左上角开始，按照 (1) > (2) > (3) > (4) 的顺序用笔点击屏幕上十字标记的中心。
- 十字标记消失时表示位置调整完成。
  - 使用 Windows 时，在保存调整内容后点击 [确定] (或 [保存])，然后关闭控制面板。



### 更改产品的角度



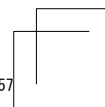
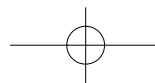
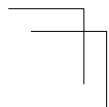
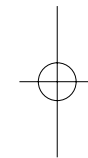
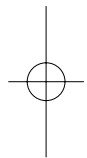
使用调整杆向前倾斜显示屏。

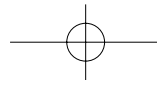


使用调整杆向后倾斜显示屏。

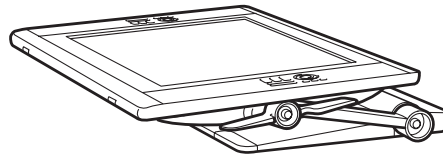


Note 可以使用上部或下部调整杆更改显示屏的角度。

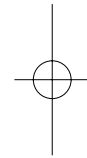
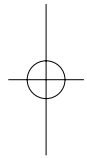




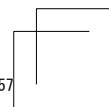
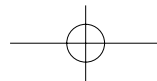
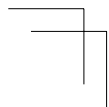
### 将产品调整到舒适的位置

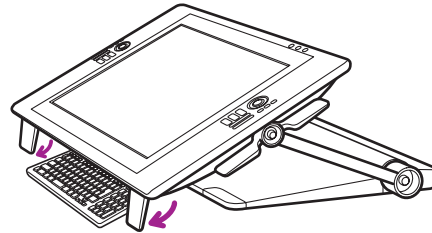
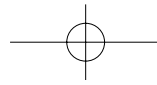


几乎可以将本产品平放在桌面上使用。

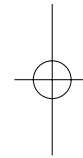
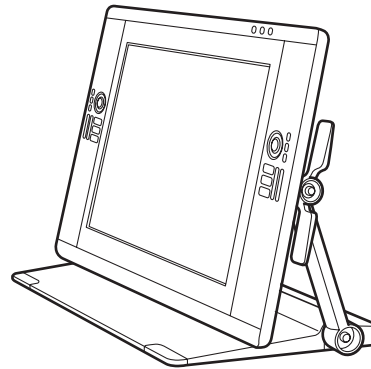
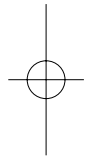


进行大量密集的创作工作时，可以将本产品从桌面上取下并放到腿上使用。有关详细信息，请参考第 14 页。

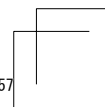
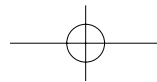
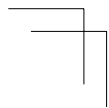


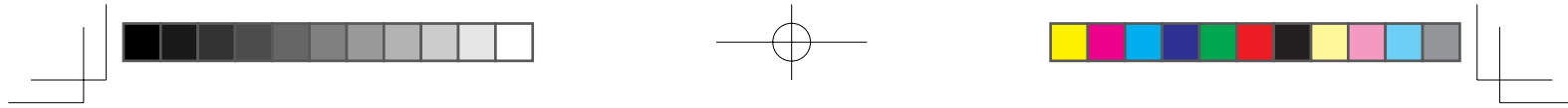


向下翻转底边上的支脚就可以在数位板的下方放置键盘。

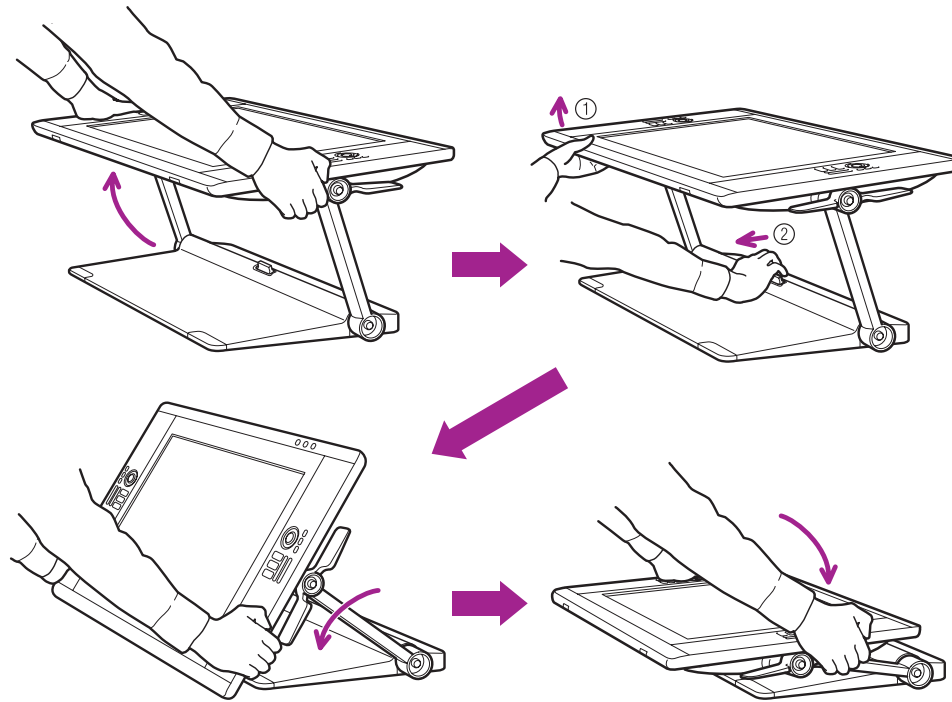


可以将本产品用作垂直直立的显示器。

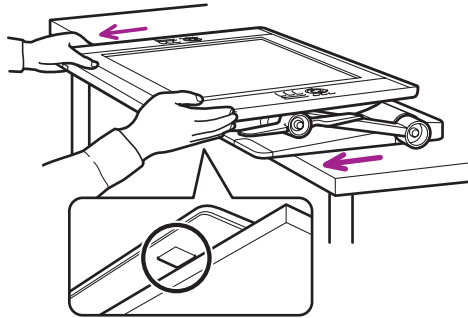
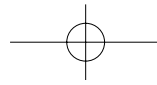




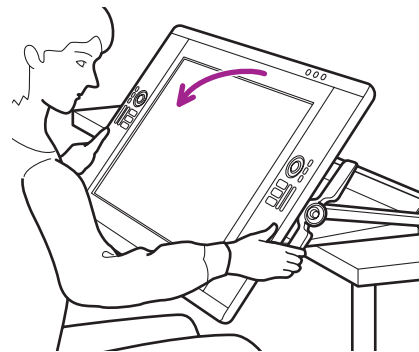
设置产品以便在腿上使用



1 将显示屏置于水平位置。

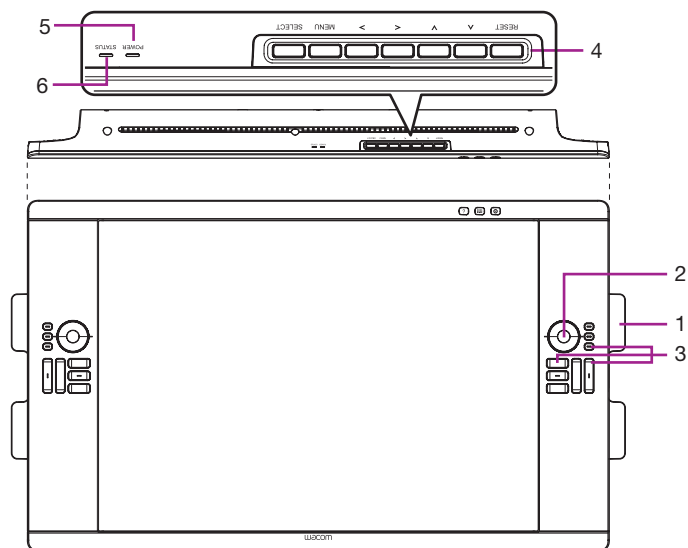


2 将显示屏朝自身方向拉动，直至其越过桌面或者您感觉其锁定到位为止。（产品底座上带有橡胶垫用于抓牢桌面并防止显示屏滑出安全位置。）



3 使用倾斜度调整杆调节所需的角。

## 产品概述



### 1. 倾斜度调整杆

### 2. 触控环

默认情况下，触控环可以让您放大大部分的图形应用程序，并在其他应用程序中进行滚动。按模式按钮可以在三种可自定义的状态间切换。

### 3. ExpressKeys

这些按键可以模拟修改键、按键操作和其他常用功能。

### 4. OSD 按钮

使用这些按钮可以调整各种显示设置。

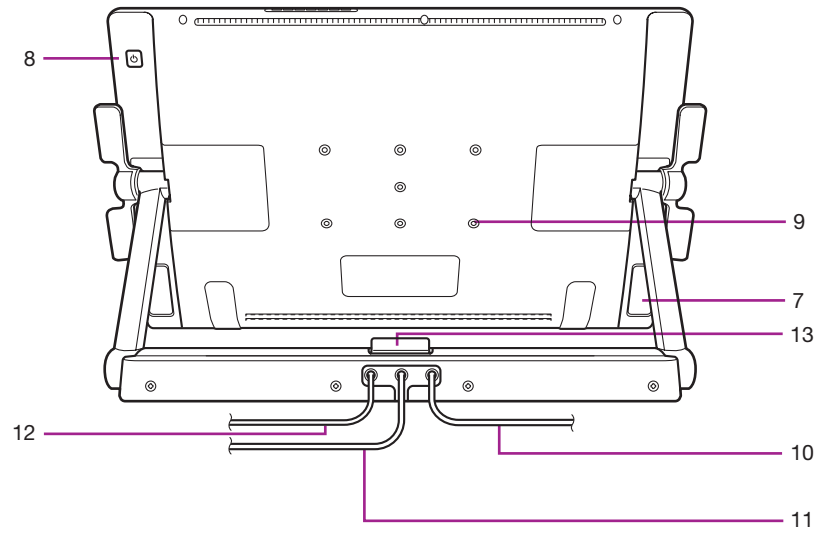
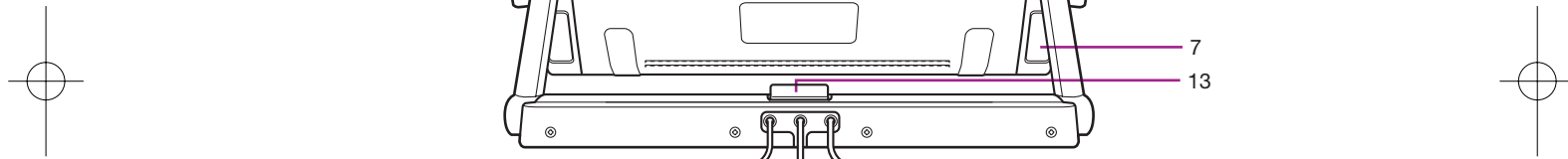
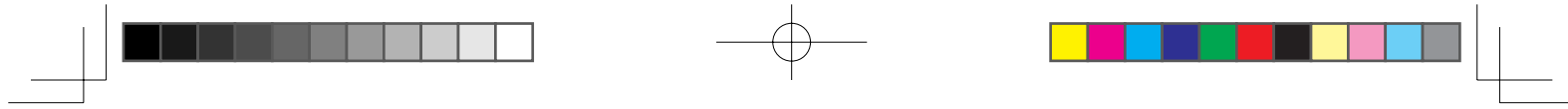
### 5. 电源指示灯

### 6. 状态指示灯

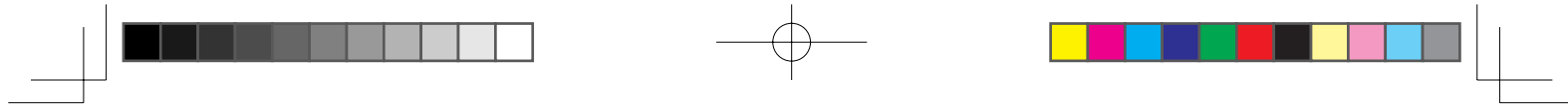


**Note** 有关这些以及其他功能的详细信息，请参考用户手册。





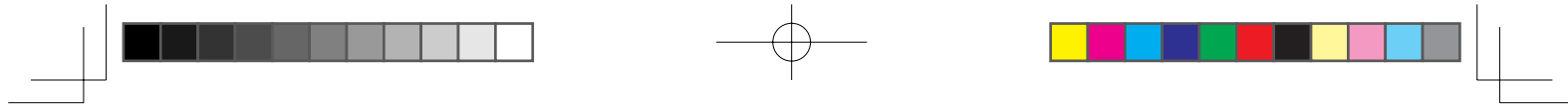
- |               |             |
|---------------|-------------|
| 7. 支撑腿        | 11. DVI 电缆  |
| 8. 电源开关       | 12. USB 电缆  |
| 9. VESA 底座安装孔 | 13. 底座锁定释放杆 |
| 10. 电源线       |             |



## 产品规格

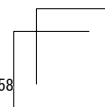
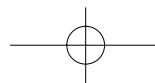
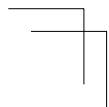
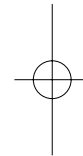
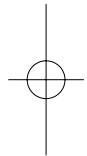
### 一般规格

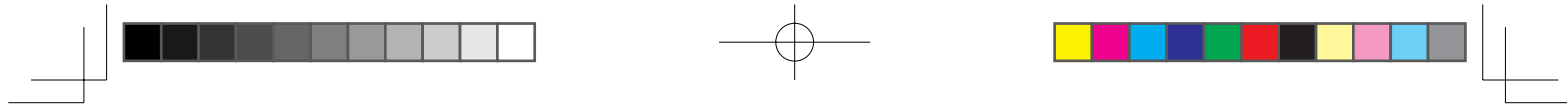
型号 / 品牌	DTK-2400 (代号: Osprey) 笔操作型号
物理尺寸 (宽 x 深 x 高)	769.3 x 463.74 x 64 mm (不包括基座)
重量	主机: 10.0 千克, 数位板基座: 14.0 千克 (待定)
工作温度及湿度	5 ~ 35 °C, 湿度: 20 ~ 80 % 相对湿度 (无结露)
存放温度及湿度	-10 ~ 60 °C, 湿度: 20 ~ 90 % 相对湿度 (无结露) (温度为 60 °C 时最高存放湿度为 38 %, 湿度为 90 % 时最高存放温度为 42 °C。)
证书和符合性	VCCI Class B, FCC Part15 Subpart B(class B) and C, CE, KCC, BSMI, C-tick CB, CCC, GOST-R, China RoHS, Korean RoHS, EU RoHS
兼容性	Windows7 / Vista / Vista x64 / XP / XP x64 Mac OS X 10.4 或更高版本
基座	可以灵活改变基座式样。
接口电缆	DisplayPort、DVI-D、DVI-A、USB
盖板	AG 蚀刻玻璃 (钢化玻璃)
输入电压	24 伏、直流
电源管理	VESA DPMS
功耗 (使用 AC 适配器时)	80 W (最高) (待定) 休眠模式为 2 W 或更低 (未连接 USB) 关机模式为 1 W 或更低
USB 集线器	上行: 1 下行: 2 (内部: 1, 外部: 1) 每个端口的负载电流最大为 0.5A。



## 显示屏

显示屏	a-Si TFT 有源矩阵 LCD (A-IPS)
屏幕尺寸	24.1 英寸 (518.4 x 324.0 mm)
宽高比	16:10
像素数	1920 x 1200
输入视频接口	DisplayPort、DVI-I (29 pin)
输入视频信号	DisplayPort 符合 V1.1a 标准, 适用于 HDCP 符合 DVI 1.0 标准 模拟 RGB
输出视频接口	无视频输出
输出视频信号	
支持的分辨率	1920 x 1200、1600 x 1200、1280 x 1024、1024 x 768、800 x 600、640 x 480 像素
白亮度均匀度	75 % (最小)
像素点距	0.270 (水平) x 0.270 (垂直) mm
视角 @ CR>10 (水平 / 垂直)	178(89/89) / 178(89/89) (典型值)
显示颜色	1,073,741,824 色 (具体取决于使用的显卡。)
对比度	700:1 (典型值) (待定)
照度	180 cd/m <sup>2</sup> (典型值) (待定)
响应时间 (Tr+Tf)	13 ms (典型值)
OSD 手动控制	亮度, 对比度, 点距, 相位, 垂直位置, 透明度, 自动调整, 水平位置, 语言, 背光, 菜单位置, 重置, 显示模式, 色温 (9300K/6500K/5000K / 使用者自定 / 原色温)
即插即用	DDC 2B, DDC/CI
LCD 质量	每块液晶数位板 LCD 面板均依照非常严格的质量标准进行制造。制造技术无法保证绝对完美的 TFT 显示屏。Wacom 不允许任何像素一直呈现白色或黑色。但可允许少数像素显示色谱中某些部分的颜色时出现错误。这并不表示显示屏有缺陷。





### 数位板

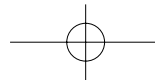
读取技术	电磁响应技术
活动区域	518.4 x 324.0 mm
分辨率	0.005 mm/点 (5080 lpi)
精度	± 0.5 mm (中央), 边缘区域 1 (自显示区域边缘 20 mm 的宽度) 为 ± 2.0 mm, 边缘区域 2 (自显示区域边缘 3 mm 的宽度) 为 ± 4.0 mm
读取高度	5 mm 或以上 (中央)
精确感应高度	自盖板起 0 mm
最高报告速率	133 点 / 秒
最大笔倾斜范围	偏离垂直方向 40 度 (边角除外)
笔倾斜级别	± 60 级
压力级别	2048 级
通讯接口	USB
手写笔	KP-501E-01

### 电源适配器

输入电压	100 ~ 240 伏、交流, 50/60 Hz
输出电压	24 伏、直流, 5.0 A (最大)

### 压力感应笔 KP-501E-01

笔尖运行轨迹	最大 1.0 mm
压力级别	2048 级
橡皮擦头运行轨迹	最大 2.0 mm
物理尺寸 (长 x 粗)	156.5 × 14.9 mm
重量	17 g (近似值)



## 自定义产品

打开 Wacom 数位板控制面板：  
Windows - 点击 [开始] >> [(所有) 程序] >> [XXXX] >> [XXXX 属性]。  
Mac - 打开 [系统预置] >> 选择 [XXXX]。

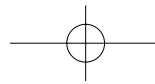


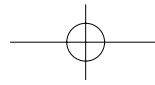
**Note** 如需了解如何自定义 ExpressKeys 和径向菜单以提升效率，请参考用户手册。

## 注册产品

### 支持选项

请查看用户手册中的技术注释或疑难解答部分。  
访问我们的网站 [www.wacom.com/product support](http://www.wacom.com/product support)  
致电 Wacom 客户服务中心。可以在星期一 - 星期四的上午 7:30 到下午 5:00，  
和星期五的上午 8:30 到下午 5:00 (太平洋时间) 拨打 360-896-9833 致电我们的客户服务中心 (服务语言：英语)。





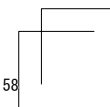
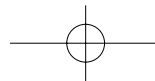
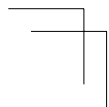
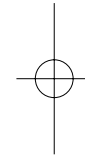
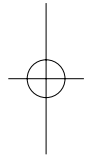
# DTK-2400

Installation Guide & Hardware Manual

설치 가이드 및 하드웨어 설명서

安裝指南及硬體手冊

安装指南与硬件手册





# Cintiq<sup>®</sup> 24HD

interactive pen display

## Important Product Information

- Precautions
- Product Specifications
- Disposal and Recycling Information
- Regulatory Statement
- License and Warranties



Cintiq® 24HD (DTK-2400)

Important Product Information

Version 1.0 F2411

Copyright © Wacom Co., Ltd., 2011

All rights reserved. No part of this manual may be reproduced except for your express personal use.

Wacom reserves the right to revise this publication without obligation to provide notification of such changes.

Wacom does its best to provide current and accurate information in this manual. However, Wacom reserves the right to change any specifications and product configurations at its discretion, without prior notice and without obligation to include such changes in this manual.

The above year indicates when this manual was prepared. However, the date of release to the users of the "manual" is simultaneous with the introduction into the market of the applicable Wacom product.

Wacom and Cintiq are registered trademarks of Wacom Co., Ltd.





## CONTENTS

Precautions	4	Regulatory Statement	14
Precautions on use and handling	4	FCC notice	14
Physical location	4	Industry Canada (Canada only)	14
Environment	4	CE declaration	15
Usage	5	License and Warranties	16
Handling	6	Tablet driver software end user license agreement	16
Product Specifications	10	Tablet driver software end user license agreement	21
General specifications	10	Limited warranty (U.S.A and Canada)	26
Display	11	Limited warranty (Central America, South America and the Caribbean)	28
Pen tablet	12	Limited warranty (Europe, Africa and Middle East)	30
Power adapter	12		
Grip Pen KP-501E-01	12		
Disposal and Recycling Information	13		
EU RoHS	13		
Turkey RoHS	13		
EU disposal information (WEEE)	13		
LAMP(S)	13		





## PRECAUTIONS

### PRECAUTIONS ON USE AND HANDLING

To ensure the safe operation of your Cintiq 24HD, be sure to follow all instructions, cautions, and warnings found within this manual. Failure to do so could cause damage to Cintiq 24HD, damage to your computer or loss of data. Failure to do so could also void your warranty, in which case Wacom shall have no responsibility to repair or replace the product.

### PHYSICAL LOCATION

#### WARNING

The Cintiq 24HD interactive pen display was designed and tested for use in normal office environments, but may also be used in climate controlled environments that fall within the environmental conditions listed below. This product has not been tested for use in specialized medical or military applications and operating environments.

In addition, this interactive pen display is neither waterproofed nor explosion resistant. It serves and can be used solely as a passive display and input device.

In all applications for which it was not designed, no information on the products performance, durability or potential issues can be supplied as it has not undergone testing for these uses.

The use of this interactive pen display in applications and environments other than a normal office environment is at the user's own risk.

### ENVIRONMENT

#### CAUTION

Temperature and humidity

- Operating temperature and humidity: 5° to 35°C, 20 to 80 % RH
- Storage temperature and humidity: -10° to 60°C, 20 to 90 % RH

Do not use or store Cintiq where:

- Temperature changes are severe or exceed specifications (e.g. outdoors or inside a vehicle).
- The pen display, the Grip Pen, and the Cintiq stand are exposed to direct sunlight or heat from an appliance, or are exposed to water or any other kind of liquid.

Do not use Cintiq in a dusty environment; this may damage the unit.





## USAGE

### WARNING

Only use a power adapter specified for use with your Cintiq. If a different type of power adapter is used, Cintiq will not work properly or may be damaged. Using a different type of power adapter also has the potential to result in fire. Use of a different power adapter will void your warranty.

Regularly remove dust build-up from the power plug. The addition of moisture, etc., to accumulated dust may create a fire hazard.

Do not damage, forcibly bend, or bundle the power cord. Do not place heavy objects on the cord or expose it to excessive heat. Ignoring this warning may result in fire, electrical shock, or product failure.

Do not connect or disconnect the power adapter with wet hands. Ignoring this warning may result in electrical shock or product malfunction.

Do not insert foreign material into the USB port, video connector ports, or any other opening of this product. If a metal object or foreign material is inserted into a port or other opening of this product it may cause product malfunction, fire, or electrical shock.

### CAUTION

Use a grounded power source when applying power to Cintiq.

Do not connect or disconnect the video or power cables while Cintiq or your computer are turned on; this may damage the display or computer video card. In this case, Wacom shall have no responsibility to repair or replace the product.

This product is for use with a DisplayPort, DVI, or VGA video card. Using an inappropriate video card may damage Cintiq.

Do not block the rear panel ventilation holes; this may overheat and damage the unit.

When not using Cintiq for long periods of time, unplug the power adapter from the AC outlet.



## HANDLING

### WARNING

High Voltage. Do not open or disassemble the Cintiq interactive pen display. There is a risk of electrical shock when the casing is open. This will also void your warranty and Wacom shall have no responsibility to repair or replace the product.

Request assistance from another person or persons when lifting or moving this product. Physical damage or personal injury may result from a single person attempting to carry this product.

Move this product in the following manner:

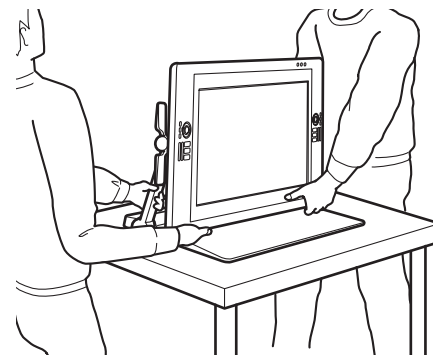
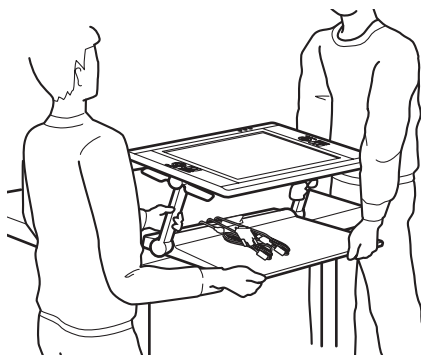
- Before moving Cintiq, adjust the pen display height and incline so the display stand support arms are locked upright, with Cintiq positioned horizontally. Place all cables on top of the stand base and ensure they do not hang free. Tripping over loose cables can cause physical damage or personal injury.

- Request assistance from another person or persons. Each person should securely grasp the lower part of a display support arm near the display stand base. With the other hand, grasp the base of the stand at the front corner. Using care, lift and carefully move this product while supporting the base of the stand.

Important: The assembly is heavy. Do not attempt to lift Cintiq by yourself. Each person should use both hands to securely grasp the product. Grasp the stand base at the corner areas to avoid any sharp edging. DO NOT lift the display unit itself, otherwise damage might occur to the LCD if it flexes during movement. Also, the display unit does not have sufficient strength to support the load of the stand hanging freely from it. Work together, and lift carefully.

- Locate Cintiq on a desktop or other working surface that is flat, clean, and free of any moisture or oily film. Taking care not to pinch your fingers, do this by first placing the rear half portion of the stand onto the table surface. Then slide the stand fully into place so that it will not tip or fall.

- When in place, use the incline levers to rotate the display back to a vertical position.





Always support the display with one hand before releasing from the locked position.

Do not hold the support arms when releasing the lock.

The display comes down when the lock is released. As the display moves downward, ensure that your fingers are not caught between the support arms and base of the display or stand.

Ensure that cabling or other objects do not get entangled in the moving parts of the stand.

Do not place this product on any wet surface or table. The rubber pads on the base of this product may slip, allowing the product to fall from the surface.

When moving this product, ensure all cables are fully disconnected from the power outlet, computer, and other areas. Appropriately bundle the cables to ensure they do not hang free and create a hazard. Tripping over loose cables can cause physical damage or personal injury.

This product weighs approximately 30 kg (66 lbs). Ensure that any table or platform on which this product is installed can withstand the weight of the product. The table or platform should have sufficient width and depth, and be robust enough not to easily topple over.

Do not place this product on any unsteady surface or table. Do not place on slanted areas, unstable areas, or areas where vibration is present.

Physical damage or personal injury may result if this product falls from an unsuitable surface.

Place this product completely and securely on a level, stable surface. Do not allow any portion of the display stand base to protrude from the installation surface. Otherwise, Cintiq may fall and cause physical damage or personal injury.

Use care when adjusting the working position. Use a smooth, horizontal motion when pulling Cintiq toward you. Do not lift the stand from the desktop. You can move the stand base to align with the edge of your desktop. DO NOT let the stand base protrude over the desktop.

If you pull too far, and as the front of the stand moves over the edge of your desktop, the friction of the base pads will increase and "lock" the stand in place. Do not pull beyond this point or past the base pads. Push the display stand back onto the working surface until the front edge of the stand base aligns with the edge of the installation surface.





Improper movement or pulling beyond the tipping point will prevent the friction lock from engaging, and could cause personal injury or damage to the pen display if it were to fall.

Do not sit on or hang from the table or other surface where this product is placed. The product may fall and cause physical damage or personal injury. Take extra care where children are present.

When using Cintiq in a position where the display overhangs your desktop, do not push or lean against the bottom edge of the display. This could cause the stand to disengage and possibly result in personal injury or damage to the pen display if it were to fall. When you are done working, always move Cintiq fully back onto the desktop. See the user's manual for more information.

The Cintiq interactive pen display has been specifically designed for use when mounted on the Cintiq display stand. However, some specialized applications (such as the use of a VESA mounting fixture) may require removal of the pen display from the stand. If it becomes necessary to remove the pen display from the stand, see the appropriate instructions in the Cintiq user's manual.

If the LCD screen has been damaged, DO NOT touch any liquid that may be leaking from it; this liquid is an irritant. In case of contact with skin, eyes, or mouth, rinse immediately with running water for at least 15 minutes or more. If contact is made with the eyes or mouth, also consult a physician.

The pen display has a backlight which contains mercury (Hg). Be sure to dispose of properly, and to manage any disposal of this unit in accordance with your local ordinances and laws.

Choking hazard. Prevent children from swallowing the pen tip or side switch. The pen tip or side switch may accidentally be pulled out if children are biting on them. Prevent children from playing with any packing materials or wrapping, as a choking or suffocation hazard may exist.

Refrain from using Cintiq during thunder or electrical storms. Disconnect Cintiq also from the AC power source during such weather. Using Cintiq during thunder or electrical storms may cause product malfunction, fire, or electrical shock.





## CAUTION

Do not disassemble the Grip Pen. This may cause the device to malfunction. In this case, Wacom shall have no responsibility to repair or replace the product.

Do not strike hard objects with the pen, such as repeatedly tapping the pen against a desk surface. Doing so may cause damage to the pen.

Do not apply excessive pressure or stress to the pen tip, eraser, or side switch. This may cause premature failure or malfunction.

Only use a replacement pen tip (nib) specified for your product by Wacom.

Do not scratch the display screen. Avoid placing sharp objects on the display screen surface.

Avoid intensive shock or vibration to Cintiq, the Cintiq stand, or the Grip Pen. Hitting or dropping Cintiq may damage the display screen or other components.

Do not put heavy objects on the pen display or push against it with a strong force; this may damage the display screen or break the Cintiq stand locking mechanism.

Do not place heavy articles on the pen display cabling, repeatedly bend the cables sharply, or apply heavy stress to the cable connectors; this may damage the unit or cabling.

Do not store the pen display on a surface that would excessively bend or crimp the cable.

If your pen display has a coated surface, a worn pen nib that is sharp or angular may cause damage. Replace the pen tip if necessary.

Do not use any organic solvent (e.g. alcohol) or even mild detergent to clean the display screen. Use of these cleaners can damage the display screen. Damage of this kind is not covered by the manufacturer's warranty.

- Before cleaning, always disconnect your product from the AC power source.
- To clean the display screen, use an anti-static cloth or a slightly damp cloth. When cleaning, apply only a light amount of pressure to the display screen and do not make the surface wet.
- To clean the Cintiq casing, Cintiq stand, or Grip Pen, use a slightly dampened (with water), soft cloth.

Always disconnect Cintiq from the AC power source if the unit appears to be malfunctioning, or has been damaged by a fall or in some other manner.



## PRODUCT SPECIFICATIONS

### GENERAL SPECIFICATIONS

Dimensions (W x H x D)	769.3 x 463.74 x 64 mm (30.3 x 18.2 x 2.5 in) excluding the Stand
Weight	28.6 kg (Main body: 13.7 kg, Display Stand base: 14.9 kg)
Input voltage	24 V DC
Power consumption (with AC adapter)	71 W max. 2 W or less in sleep modes (USB non-connected) 1 W or less in OFF mode (USB non-connected)
Power management	VESA DPMS
Compatibility	Windows 7, Vista, XP (32 and 64 bit) Mac OSX 10.5.8 or later
Cables	DisplayPort, DVI-D, DVI-A, USB
USB HUB	Integrated, USBv2.0 powered HUB with one external port, 500mA
Cover plate	AG etched glass (tempered glass)
Operating temperature and humidity	5° to 35° C, humidity: 20 % to 80 % (non-condensing)
Storage temperature and humidity	-10° to 60° C, humidity: 20 % to 90 % (non-condensing) (maximum storage humidity is 38 % at a temperature of 60 degrees C, and maximum storage temperature is 42 degrees C at a humidity of 90 %)





## DISPLAY

Display panel	a-Si active matrix TFT LCD (h-IPS)
Screen size	24.1 inch, 518 x 324 mm (20.4 x 12.8 in)
Aspect ratio	16:10
Number of pixels	1920 x 1200
Input Video Connector	DisplayPort, DVI-I (29-pin)
Input video signal	DisplayPort complies with Standard V1.1a, applicable to HDCP DVI 1.0 compliance Analog RGB
Supported resolution	1920 x 1200, 1600 x 1200, 1280 x 1024, 1024 x 768, 800 x 600, 640 x 480 pixels
White luminance uniformity	75% (min.)
Pixel pitch	0.270 (H) x 0.270 (V) mm (0.011 x 0.011 in)
Viewing angles at contrast ratio 10:1 > 10(horizontal/vertical)	178° (89° / 89°) / 178° (89° / 89°) (typ.)
Display colors	1,073,741,824 colors
Contrast ratio	550:1 (typ.)
Response time (Tr+Tf)	13 ms (typ.)
Luminance	190 cd/m <sup>2</sup> (typ.)
OSD manual control	Brightness, contrast, pitch, phase, vertical position, horizontal position, transparency, auto adjust, language, back light, menu position, reset, scaling, color temperature (9300K/6500K/5000K/ User/ Direct)
Plug and Play	DDC 2B, DDC/CI
LCD quality	Each LCD panel is produced under very stringent quality standards. Production techniques cannot guarantee an absolutely perfect TFT display. Wacom does not allow any subpixel to be always white or always black. A small number of subpixels are allowed to show a wrong color for some parts of the color spectrum. This does not mean the display is defective.





## PEN TABLET

Reading technology	Electro-magnetic resonance technology
Active area	518.4 x 324.0 mm
Resolution	0.005 lpmm (5080 lpi)
Accuracy	Center: +/- 0.5 mm Edge area 1 (20 mm from edge of display area): +/- 2.0 mm Edge area 2 (3 mm from edge of display area): +/- 4.0 mm
Maximum pen tilt range	40 degrees from vertical (except for corners)
Pen tilt levels	± 60 levels
Reading height	5 mm (0.2 in) or more, center
Maximum report rate	133 points/sec.
Pressure levels	2048 levels
Communication interface	USB

## POWER ADAPTER

Input voltage	100 to 240 V AC, 50/60 Hz
Output voltage	24 V DC, 5.0 A (max.)

## GRIP PEN KP-501E-01

Pressure levels	2048 levels
Pen tip travel	1.0 mm (0.04 in), max.
Eraser tip travel	2.0 mm (0.08 in), max.
Physical dimensions (L x D)	156.5 x 14.9 mm (6.17 x 0.59 in)
Weight	17 g (0.60 oz), approximate



## DISPOSAL AND RECYCLING INFORMATION

### EU ROHS

Wacom products comply with the European Union RoHS Directive 2002/95/EC (RoHS Directive).

### TURKEY ROHS

Türkiye Cumhuriyeti: EEE Yönetmeliğine Uygundur

### EU DISPOSAL INFORMATION (WEEE)



Reuse, recycling, and recovery. You are urged to recycle this product when replacing it with a newer product or when it has outlived its useful life by bringing it to an appropriate collection point for recyclable materials in your community or region. By doing this, you can help improve the environment of your community as well as minimize the potential negative effects created should any hazardous substance that may possibly be present within waste material reach the environment during the disposal process.

Within the European Union, users are required not to dispose of Waste Electrical and Electronic Equipment (WEEE) as unsorted municipal waste, according to the Directive 2002/96/EC of the European Parliament and of the Council of 27 January 2003, or the corresponding local laws of the Member States. Products for which this is applicable will be marked with the WEEE symbol shown at the beginning of this note unless this is not feasible because of the size or the function of the product. Wacom products are subject to the Directive 2002/96/EC and therefore you should always collect them separately and bring them to the appropriate collection point in your community or region.



**- LAMP(S) INSIDE THIS PRODUCT CONTAIN MERCURY AND MUST BE RECYCLED OR DISPOSED OF ACCORDING TO LOCAL, STATE OR FEDERAL LAWS.**

The DTK-2400 pen display has a backlight which contains mercury (HG)

Be sure to dispose of properly, and to manage any disposal of this unit in accordance with your local ordinances and laws.

## REGULATORY STATEMENT

### FCC NOTICE

This device complies with Part 15 of the FCC Rules. Operation is subject to the following two conditions: (1) this device may not cause harmful interference, and (2) this device must accept any interference received, including interference that may cause undesired operation.

This equipment has been tested and found to comply with the limits for a Class B digital device, pursuant to Part 15 of FCC Rules. These limits are designed to provide reasonable protection against harmful interference in a residential installation.

This equipment generates, uses and can radiate radio frequency energy and, if not installed and used in accordance with the instructions, may cause harmful interference to radio communications. However, there is no guarantee that interference will not occur in a particular installation.

You can determine whether the equipment is causing interference by disconnecting it from your computer. If the interference stops, it was probably caused by the equipment.

If the equipment does cause interference to radio or television reception, you may be able to correct the interference by using one or more of the following measures:

- Rotate the television or radio antenna until the interference stops.
- Move the equipment farther away from the television or radio.
- Plug the equipment and computer into an outlet that is on a different circuit from the television or radio.

If necessary, consult your Wacom dealer or an experienced radio/television technician for help.

Changes or modifications to this product not authorized by Wacom could void the FCC Certification and negate your authority to operate the product.

### INDUSTRY CANADA (CANADA ONLY)

Industry Canada, Class B

"This Class (B) digital apparatus complies with Canadian ICES-003"

*This device complies with Industry Canada licence-exempt RSS standard(s). Operation is subject to the following two conditions: (1) this device may not cause interference, and (2) this device must accept any interference, including interference that may cause undesired operation of the device.*

## CE DECLARATION

The pen tablet or the interactive pen display (model DTK-2400) has been tested and found to comply with the following harmonized European Norms:

### EMC Directive

- EN 55022:2006+A1:2007, Class B
- EN 61000-3-2:2006+A1:2009+A2:2009
- EN 61000-3-3:2008
- EN 55024:1998+A1:2001+A2:2003
  - IEC 61000-4-2:2008, IEC 61000-4-3:2008
  - IEC 61000-4-4:2004+Corr.1:2006+Corr.2:2007
  - IEC 61000-4-5:2005
  - IEC 61000-4-6:2008
  - IEC 61000-4-8:2009
  - IEC 61000-4-11:2004

### ErP Directive

- IEC 62301 ed.1:2005

Based on the results of these tests, Wacom declares that the above mentioned devices conform to EMC Directive 2004/108/EC and to ErP Directive 2009/125/EC. The device must be installed and operated always in strict accordance with the instructions given in this handbook.

Any changes or modifications to this product that were not specifically authorized by Wacom will invalidate this declaration.

## LICENSE AND WARRANTIES

### TABLET DRIVER SOFTWARE END USER LICENSE AGREEMENT (WORLDWIDE EXCEPT FOR EUROPE, AFRICA AND MIDDLE EAST)

This End User License Agreement (this "Agreement") is between you (both the individual installing the Software and any single legal entity on behalf of which such individual is acting) ("You" or "Your") and Wacom Co. Ltd, 2-510-1 Toyonodai, Kazo-shi, Saitama 349-1148, Japan ("Wacom").

IT IS IMPORTANT THAT YOU READ CAREFULLY AND UNDERSTAND THIS AGREEMENT. BY CLICKING THE "I ACCEPT" BUTTON OR USING OR INSTALLING THE SOFTWARE, YOU AGREE TO BE BOUND BY THIS AGREEMENT. IF YOU DO NOT AGREE WITH ALL THE TERMS OF THIS AGREEMENT AND DO NOT AGREE TO BE BOUND BY THIS AGREEMENT, PLEASE CLICK THE "I DO NOT ACCEPT" BUTTON. IF YOU DO NOT ACCEPT THIS AGREEMENT, YOU WILL NOT HAVE THE RIGHT TO USE OR ACCESS THE SOFTWARE.

#### 1. DEFINITIONS

- 1.1 "Documentation" means the user guides and manuals for installation and use of the Software.
- 1.2 "Product" means the Wacom Tablet hardware, with which the Software has been provided to You.
- 1.3 "Software" means the Tablet Driver software and Documentation provided to You with the Product, and any updates to either of the foregoing provided by Wacom to You under this Agreement.

#### 2. SOFTWARE LICENSE

##### 2.1 Limited License.

Subject to the terms and conditions of this Agreement, Wacom hereby grants to You a limited, non-exclusive license to: (a) use and install a single copy of the Software, in machine readable form only, on a single computer or other similar device, solely in conjunction with the Product; (b) use the Documentation provided with the Software in support of Your authorized use of the Software; and (c) to make a single back-up copy of the Software, to be used solely for back-up purposes, provided that all trademark, copyright and other proprietary and restricted rights notices, legends and symbols included in the original version of the Software are reproduced on such back-up copy.



## 2.2 Restrictions.

You will not copy or use the Software (including the Documentation) except as expressly permitted by this Agreement. You will not modify, translate, distribute, create derivative works based on, pledge, relicense, sublicense, loan, rent or lease the Software or use the Software for third-party training, commercial time-sharing or service bureau use. You will not, and will not permit any third party to, reverse engineer, disassemble or decompile the Software, or attempt to determine any source code, algorithms, methods, or techniques used or embodied in the Software, except to the extent expressly permitted by applicable law. You will not use the Software as a stand-alone software or in conjunction with third party products, but may be used only in conjunction with the Product. You will not remove or alter any trademark, copyright or other proprietary and restricted rights notices, legends and symbols appearing in or on the Software.

## 2.3 No Assignment; One Time Transfer.

You will not transfer, assign or delegate any of Your rights or obligations under this Agreement, by operation of law or otherwise, without the prior written consent of Wacom, which shall not be unreasonably withheld. However, You may make a one-time permanent transfer of all of Your rights under this Agreement to another party in conjunction with Your transfer of the Product if all of the following conditions have been met: (a) the transfer includes all components and parts of the Product, all printed materials, any other warranties applicable to the Product, and all of Your rights and obligations under this Agreement, (b) You do not retain any copies of the Software on any media or computer, and (c) the party receiving the Software reads, understands and agrees to accept the terms of this Agreement. Any transfer, assignment or delegation of any of Your rights or obligations under this Agreement in violation of this paragraph is void and of no effect.

## 2.4 Ownership.

Wacom and its licensors will retain all right, title and interest in and to the Software, including all patent, copyright, trademark, trade secret and any other intellectual property or industrial rights in and to the Software, and any improvements, updates and derivative works thereof. Wacom reserves all rights and interests in and to the Software. You do not acquire any other rights, express or implied, in the Software other than those rights expressly granted under this Agreement.

## 2.5 No Support.

Wacom has no obligation to provide technical support, maintenance, upgrades, modifications or new releases under this Agreement.

### 3. WARRANTIES AND REMEDIES

#### 3.1 Limited Warranties.

Wacom warrants that the Software, when used in accordance with the Documentation and the terms and conditions of this Agreement, will materially perform in accordance with the Documentation for a period of ninety (90) days from the date the Software is first installed or activated by You ("Warranty Period"). In the event that the Software does not comply with the foregoing warranty during such Warranty Period, then Wacom shall make commercially reasonable efforts to correct such non-compliance by repairing or replacing the Software at no additional charge to You. The Software is not fault tolerant and is not designed, permitted or intended for uses related to high risk activities. No Oral or written information or advice provided by Wacom, its agents or any distributors or retailers of the Product will create any warranty or in any way increase the scope of the warranties expressly provided by Wacom under this Agreement. This paragraph states the entire liability and obligation of Wacom, and Your sole and exclusive remedy in the event that the Software does not comply with the foregoing warranty. Wacom does not warrant that: (a) the Software will meet Your requirements, (b) the Software will be compatible with or operate on the computer or other device on which You install it, or (c) defects in the Software will be corrected, or that the operation of the Software will be uninterrupted or error-free. This Agreement contains no warranties from Wacom for the Products, which are subject to Wacom's standard hardware warranty (if any) applicable thereto. Wacom will have no warranty obligations under this paragraph if such non-compliance is caused by unauthorized use of the Software, abuse, misuse, alteration, neglect or accidental damage of the Software or any repair or modification of the Software not performed by Wacom. Replacement or repair of Software does not extend its warranty period beyond the original Warranty Period.

#### 3.2 Disclaimers.

Other than for the express warranties contained in this Agreement, WACOM MAKES NO, AND HEREBY DISCLAIMS ALL, OTHER REPRESENTATIONS AND WARRANTIES OF ANY KIND WITH RESPECT TO THE SOFTWARE. TO THE FULLEST EXTENT PERMISSIBLE UNDER APPLICABLE LAW, WACOM EXPRESSLY DISCLAIMS ALL WARRANTIES OF ANY KIND, EXPRESS OR IMPLIED, WITH RESPECT TO THE SOFTWARE, INCLUDING WARRANTIES OF MERCHANTABILITY, FITNESS FOR A PARTICULAR PURPOSE, SATISFACTORY QUALITY, ACCURACY, TITLE AND NON-INFRINGEMENT OF THIRD PARTIES' RIGHTS, AND ANY WARRANTIES THAT MAY ARISE OUT OF COURSE OF PERFORMANCE, COURSE OF DEALING OR USAGE OF TRADE. IF YOU ARE A CONSUMER (A USER OF THE SOFTWARE FOR PERSONAL PURPOSES AND NOT FOR BUSINESS, TRADE OR PROFESSIONAL PURPOSES), THE FOREGOING LIMITATIONS MAY NOT APPLY TO YOU BASED ON THE APPLICABLE LAWS OF THE JURISDICTION IN WHICH YOU RESIDE.





## 4. TERMINATION

This Agreement is effective until terminated. Additionally, Your rights and licenses under this Agreement will automatically terminate and cease to be effective, without any notice or action by Wacom, in the event that You fail to comply with any terms of this Agreement. Upon termination of this Agreement, You will cease all use of the Software and permanently delete and make unrecoverable the Software (including Your back-up copy and all Documentation) from Your computer or similar device on which it was installed. Upon any termination of this Agreement, Sections 1, 2.2, 2.4, 3.2, 4 and 5 will survive.

## 5. GENERAL TERMS

### 5.1 Law.

This Agreement and all matters arising out of or relating to this Agreement will be governed by the internal laws of Japan without giving effect to any choice of law rule. This Agreement will not be governed by the United Nations Convention on Contracts for the International Sales of Goods, the application of which is expressly excluded. In the event of any controversy, claim or dispute between the parties arising out of or relating to this Agreement, such controversy, claim or dispute may be tried solely in the Tokyo District Court, located in Japan, and Wacom and You each hereby irrevocably consent to the jurisdiction and venue of such court.

### 5.2 Limitation of Liability.

In no event will either party be liable for any and all indirect, incidental, special, consequential or punitive damages, or damages for loss of profits, revenue, business, savings, data, use or cost of substitute procurement, incurred by either party or any third party, whether in an action in contract or tort, even if the other party has been advised of the possibility of such damages or if such damages are foreseeable. The parties acknowledge that the limitations of liability in this Section 5.2 and in the other provisions of this Agreement and the allocation of risk herein are an essential element of the bargain between the parties, without which Wacom would not have entered into this Agreement. Wacom's pricing of the Products reflects this allocation of risk and the limitation of liability specified herein. Wacom's liability under this Agreement or in any way related to the Software shall not exceed the amounts actually paid by you for the Product. You are required to keep the invoice or any other documents which prove the amount you actually paid for the Product. Notwithstanding the above, nothing in this Agreement limits Wacom's liability to You to the extent arising out of any willful or grossly negligent misconduct on the part of Wacom.

### 5.3 Severability.

If any provision of this Agreement is held to be illegal, invalid or otherwise unenforceable, such provision will be severed and deleted from this Agreement, while the remainder of this Agreement will continue in full force and effect.



#### 5.4 Compliance with Laws.

You will comply fully with all applicable laws and regulations, including export laws and local laws of the country or region in which You reside or use the Software. Without limiting the generality of the foregoing, You will not, and You will require Your representatives not to, export, direct or transfer the Software, or any direct product thereof, to any destination, person or entity restricted or prohibited by the applicable law.

#### 5.5 Entire Agreement; General.

This Agreement constitutes the entire agreement between the parties and supersedes all prior or contemporaneous agreements or representations, written or oral, concerning the subject matter of this Agreement. This does not, and shall not be construed to, create any partnership, joint venture, employer-employee, agency or franchisor-franchisee relationship between You and Wacom. Any heading, caption or section title contained herein is inserted only as a matter of convenience, and in no way defines or explains any section or provision hereof. The waiver by either party of any default or breach of this Agreement may only be made in writing and will not constitute a waiver of any other or subsequent default or breach.



## TABLET DRIVER SOFTWARE END USER LICENSE AGREEMENT (EUROPE, MIDDLE EAST AND AFRICA)

This End User License Agreement (this "Agreement") is between you (both the individual installing the Software and any single legal entity on behalf of which such individual is acting) ("You" or "Your") and Wacom Co. Ltd, 2-510-1 Toyonodai, Kazo-shi, Saitama 349-1148, Japan ("Wacom").

IT IS IMPORTANT THAT YOU READ CAREFULLY AND UNDERSTAND THIS AGREEMENT. BY CLICKING THE "I ACCEPT" BUTTON OR USING OR INSTALLING THE SOFTWARE, YOU AGREE TO BE BOUND BY THIS AGREEMENT. IF YOU DO NOT AGREE WITH ALL THE TERMS OF THIS AGREEMENT AND DO NOT AGREE TO BE BOUND BY THIS AGREEMENT, PLEASE CLICK THE "I DO NOT ACCEPT" BUTTON. IF YOU DO NOT ACCEPT THIS AGREEMENT, YOU WILL NOT HAVE THE RIGHT TO USE OR ACCESS THE SOFTWARE.

### 1. DEFINITIONS

- 1.1 "Documentation" means the user guides and manuals for installation and use of the Software.
- 1.2 "Product" means the Wacom Tablet hardware, with which the Software has been provided to You.
- 1.3 "Software" means the Tablet Driver software and Documentation provided to You with the Product, and any updates to either of the foregoing provided by Wacom to You under this Agreement.

### 2. SOFTWARE LICENSE

#### 2.1 Limited License.

Subject to the terms and conditions of this Agreement, Wacom hereby grants to You a limited, non-exclusive license to: (a) use and install a single copy of the Software, in machine readable form only, on a single computer or other similar device, solely in conjunction with the Product; (b) use the Documentation provided with the Software in support of Your authorized use of the Software; and (c) make a single back-up copy of the Software, to be used solely for back-up purposes, provided that all trademark, copyright and other proprietary and restricted rights notices, legends and symbols included in the original version of the Software are reproduced on such back-up copy.



## 2.2 Restrictions.

You will not copy or use the Software (including the Documentation) except as expressly permitted by this Agreement, or for disaster recovery, program error verification, and back-up purposes. You will not modify, translate, distribute, create derivative works based on, pledge, sublicense, loan, rent or lease the Software or use the Software for third-party training, commercial time-sharing or service bureau use. You will not, and will not permit any third party to, reverse engineer, disassemble or decompile the Software, or attempt to determine any source code, algorithms, methods, or techniques used or embodied in the Software, except as and to the extent expressly permitted by applicable law despite this restriction. You will not use the Software as a stand-alone software or in conjunction with third party products, but may be used only in conjunction with the Product. You will not remove or alter any trademark, copyright or other proprietary and restricted rights notices, legends and symbols appearing in or on the Software.

## 2.3 No Assignment; One Time Transfer.

You will not transfer, assign or delegate any of Your rights or obligations under this Agreement, by operation of law or otherwise, without the prior written consent of Wacom, which shall not be unreasonably withheld. However, You may make a one-time permanent transfer of all of Your rights under this Agreement to another party in connection with Your transfer of the Product if all of the following conditions have been met: (a) the transfer includes all components and parts of the Product, all printed materials, any other warranties applicable to the Product, and all of Your rights and obligations under this Agreement, (b) You do not retain any copies of the Software on any media or computer, and (c) the party receiving the Software reads, understands and agrees to accept the terms of this Agreement. Any transfer, assignment or delegation of any of Your rights or obligations under this Agreement in violation of this paragraph is void and of no effect.

## 2.4 Ownership.

Wacom and its licensors will retain all right, title and interest in and to the Software, including all patent, copyright, trademark, trade secret and any other intellectual property or industrial rights in and to the Software, and any improvements, updates and derivative works thereof. Wacom reserves all rights and interests in and to the Software. You do not acquire any other rights, express or implied, in the Software other than those rights expressly granted under this Agreement.

## 2.5 No Support.

Wacom has no obligation to provide technical support, maintenance, upgrades, modifications or new releases under this Agreement.

### 3. WARRANTIES AND REMEDIES

#### 3.1 Limited Warranties.

Wacom warrants that the Software, when used in accordance with the Documentation and the terms and conditions of this Agreement, will materially perform in accordance with the Documentation for a period of two (2) years from the date the Software is first installed or activated by You ("Warranty Period") In the event that the Software does not comply with the foregoing warranty during such Warranty Period, then Wacom shall correct such non-compliance by repairing or replacing the Software at no additional charge to You. If repairing or replacing the Software is impossible or disproportionate, or cannot be completed within reasonable time or inconvenience, You shall be entitled to either require appropriate reduction of any fees paid or have the Agreement rescinded. The Software is not fault tolerant and is not designed, permitted or intended for uses related to high risk activities. No Oral or written information or advice provided by Wacom, its agents or any distributors or retailers of the Product will create any warranty or in any way increase the scope of the warranties expressly provided by Wacom under this Agreement. This paragraph states the entire liability and obligation of Wacom, and Your sole and exclusive remedy in the event that the Software does not comply with the foregoing warranty. Wacom does not warrant that: (a) the Software will meet Your requirements, (b) the Software will be compatible with or operate on the computer or other device on which You install it, or (c) defects in the Software will be corrected, or that the operation of the Software will be uninterrupted or error-free. This Agreement contains no warranties from Wacom for the hardware components of the Products, which are subject to Wacom's standard hardware warranty (if any) applicable thereto. Wacom will have no warranty obligations under paragraph if such non-compliance is caused by unauthorized use of the Software, abuse, misuse, alteration, neglect or accidental damage of the Software or any repair or modification of the Software not performed by Wacom. Replacement or repair of Software does not extend its warranty period beyond the original Warranty Period.

#### 3.2 Disclaimers.

Other than for the express warranties contained in this Agreement, WACOM MAKES NO, AND HEREBY DISCLAIMS ALL, OTHER REPRESENTATIONS AND WARRANTIES OF ANY KIND WITH RESPECT TO THE SOFTWARE. TO THE FULLEST EXTENT PERMISSIBLE UNDER APPLICABLE LAW, WACOM EXPRESSLY DISCLAIMS ALL WARRANTIES OF ANY KIND, EXPRESS OR IMPLIED, WITH RESPECT TO THE SOFTWARE, INCLUDING WARRANTIES OF MERCHANTABILITY, FITNESS FOR A PARTICULAR PURPOSE, SATISFACTORY QUALITY, ACCURACY, TITLE AND NON-INFRINGEMENT, AND ANY WARRANTIES THAT MAY ARISE OUT OF COURSE OF PERFORMANCE, COURSE OF DEALING OR USAGE OF TRADE. IF YOU ARE A CONSUMER (A USER OF THE SOFTWARE FOR PERSONAL PURPOSES AND NOT FOR BUSINESS, TRADE OR PROFESSIONAL PURPOSES, THE FOREGOING LIMITATIONS MAY NOT APPLY TO YOU BASED ON THE APPLICABLE LAWS OF THE JURISDICTION IN WHICH YOU RESIDE.

## 4. TERMINATION

This Agreement is effective until terminated. Additionally, Your rights and licenses under this Agreement will automatically terminate and cease to be effective, without any notice or action by Wacom, in the event that You fail to comply with any terms of this Agreement. Upon termination of this Agreement, You will cease all use of the Software and permanently delete and make unrecoverable the Software (including Your back-up copy and all Documentation) from Your computer or similar device on which it was installed. Upon any termination of this Agreement, Sections 1, 2.2, 2.4, 3.2, 4 and 5 will survive.

## 5. GENERAL TERMS

### 5.1 Law.

This Agreement and all matters arising out of or relating to this Agreement will be governed by the internal laws of Japan without giving effect to any choice of law rule. This Agreement will not be governed by the United Nations Convention on Contracts for the International Sales of Goods, the application of which is expressly excluded. In the event of any controversy, claim or dispute between the parties arising out of or relating to this Agreement, such controversy, claim or dispute may be tried solely in the Tokyo District Court, located in Japan, and Wacom and You each hereby irrevocably consent to the jurisdiction and venue of such courts.

### 5.2 Limitation of Liability.

In no event will either party be liable for any indirect, incidental, special, consequential or punitive damages, or damages for loss of profits, revenue, business, savings, data, use or cost of substitute procurement, incurred by either party or any third party, whether in an action in contract or tort, even if the other party has been advised of the possibility of such damages or if such damages are foreseeable. In no event will Wacom's liability for damages hereunder exceed the amounts actually paid by You for the Product. The parties acknowledge that the limitations of liability in this Section 5.2 and in the other provisions of this Agreement and the allocation of risk herein are an essential element of the bargain between the parties, without which Wacom would not have entered into this Agreement. Wacom's pricing of the Products reflects this allocation of risk and the limitation of liability specified herein. Notwithstanding the above, nothing in this Agreement limits Wacom's liability to You in the event of: (i) death or personal injury to the extent resulting directly from Wacom's negligence or that of its employees or agents; or (ii) any fraudulent act or omission of Wacom or that of its employees or agents; or (iii) to the extent arising out of any willful or grossly negligent misconduct on the part of Wacom.



### 5.3 Severability.

If any provision of this Agreement is held to be illegal, invalid or otherwise unenforceable, such provision will be enforced to the extent possible consistent with the stated intention of the parties, or, if incapable of such enforcement, will be deemed to be severed and deleted from this Agreement, while the remainder of this Agreement will continue in full force and effect.

### 5.4 Compliance with Laws.

You will comply fully with all applicable laws and regulations, including export laws and local laws of the country or region in which You reside or use the Software. Without limiting the generality of the foregoing, You will not, and You will require Your representatives not to, export, direct or transfer the Software, or any direct product thereof, to any destination, person or entity restricted or prohibited by the applicable law.

### 5.5 Entire Agreement; General.

This Agreement constitutes the entire agreement between the parties and supersedes all prior or contemporaneous agreements or representations, written or oral, concerning the subject matter of this Agreement. This does not, and shall not be construed to, create any partnership, joint venture, employer-employee, agency or franchisor-franchisee relationship between You and Wacom. Any heading, caption or section title contained herein is inserted only as a matter of convenience, and in no way defines or explains any section or provision hereof. The waiver by either party of any default or breach of this Agreement may only be made in writing and will not constitute a waiver of any other or subsequent default or breach.



## LIMITED WARRANTY (U.S.A AND CANADA)

Wacom warrants the product, to the original consumer purchaser, except for the Software and consumable items such as the battery, pen cartridges, tablet surface sheet and nibs, to be free from defects in materials and workmanship under normal use and service for a period of two (2) years, from the date of original retail purchase, as evidenced by a copy of the receipt and registration with Wacom within 30 days of purchase.

The Software is licensed "as is." Wacom makes no warranty with respect to its quality or performance. Wacom cannot guarantee you uninterrupted service or the correction of any errors.

Upon discovery of a defect in the product, except in the Software, within the Warranty Period, you should contact Wacom Technical Support via telephone, email, or fax to obtain an RMA (Return Merchandise Authorization) number and instructions for shipping the product to a service location designated by Wacom. You should send the product, shipping charges prepaid, to the designated service location, accompanied by the return authorization number, your name, address and telephone number, proof of purchase date, and a description of the defect. Wacom will pay for return shipping by United Parcel Service or by an equivalent service as chosen by Wacom.

Wacom's sole obligation and entire liability under this warranty shall be, at Wacom's option, either the repair or replacement of the defective product or parts thereof of which Wacom is notified during the Warranty Period; provided, however, that you are responsible for (i) the cost of transportation of the product to the designated service location and (ii) any loss or damage to the product resulting from such transportation.

Wacom shall have no responsibility to repair or replace the product if the failure of the product has resulted from accident, abuse, misuse, negligence, or unauthorized modification or repair, or if it has been handled or stored other than in accordance with Wacom's storage instructions.

Any descriptions, drawings, specifications, samples, models, bulletins, or similar material, used in connection with the sale of the product, shall not be construed as an express warranty that the product will conform or comply with your requirements.

EXCEPT FOR THE LIMITED WARRANTY DESCRIBED ABOVE, THERE ARE NO OTHER WARRANTIES MADE BY WACOM ON THIS PRODUCT. NO ORAL OR WRITTEN INFORMATION OR ADVICE GIVEN BY WACOM, ITS DEALERS, DISTRIBUTORS, AGENTS, OR EMPLOYEES SHALL CREATE A WARRANTY OR IN ANY WAY INCREASE THE SCOPE OF THIS WARRANTY, AND YOU MAY NOT RELY ON ANY SUCH INFORMATION OR ADVICE. THIS WARRANTY GIVES YOU SPECIFIC LEGAL RIGHTS, AND YOU MAY ALSO HAVE OTHER RIGHTS WHICH VARY FROM STATE TO STATE.





WACOM LIMITS THE DURATION OF ANY LEGALLY IMPLIED WARRANTIES INCLUDING IMPLIED WARRANTIES OF MERCHANTABILITY OR FITNESS FOR A PARTICULAR PURPOSE, TO THE DURATION OF WACOM'S EXPRESS WARRANTY. SOME STATES DO NOT ALLOW LIMITATIONS ON HOW LONG AN IMPLIED WARRANTY LASTS, SO THE ABOVE LIMITATION MAY NOT APPLY TO YOU.

NEITHER WACOM NOR ANYONE ELSE WHO HAS BEEN INVOLVED IN THE CREATION, PRODUCTION, OR DELIVERY OF THIS PRODUCT SHALL BE LIABLE FOR ANY DIRECT, CONSEQUENTIAL, OR INCIDENTAL DAMAGES (INCLUDING DAMAGES FOR LOSS OF BUSINESS PROFITS, BUSINESS INTERRUPTION, LOSS OF BUSINESS INFORMATION AND THE LIKE) ARISING OUT OF THE USE OF OR INABILITY TO USE SUCH PRODUCT, EVEN IF WACOM HAS BEEN ADVISED OF THE POSSIBILITY OF SUCH DAMAGES. SOME STATES DO NOT ALLOW THE EXCLUSION OR LIMITATION OF INCIDENTAL OR CONSEQUENTIAL DAMAGES, SO THE ABOVE LIMITATION OR EXCLUSION MAY NOT APPLY TO YOU.

In the event that any of the above limitations are held unenforceable, Wacom's liability for any damages to you or any party shall not exceed the purchase price you paid, regardless of the form of any claim.

This Limited Warranty is governed by the laws of the United States of America and the state of Washington.

This Limited Warranty is valid for and only applies to products purchased and used inside the United States (and its territories or possessions) or Canada.

## WARRANTY SERVICE

To obtain Warranty service within the U.S. or Canada contact:

Wacom Customer Care Center

Phone: 1.360.896.9833

Email Inquiry form: <http://www.wacom.com/productsupport/email.cfm>

Should you have any questions about this Agreement, or if you desire to contact Wacom for any reason, please contact in writing:

Wacom Technology Corporation

1311 SE Cardinal Court

Vancouver, Washington 98683

U.S.A.



## LIMITED WARRANTY (CENTRAL AMERICA, SOUTH AMERICA AND THE CARIBBEAN)

Wacom warrants the product, to the original consumer purchaser, except for the Software and consumable items such as the battery, pen cartridges, tablet surface sheet and nibs, to be free from defects in materials and workmanship under normal use and service for a period of one (1) year, from the date of original retail purchase, as evidenced by a copy of the receipt and registration with Wacom within 30 days of purchase.

The Software is licensed "as is." Wacom makes no warranty with respect to its quality or performance. Wacom cannot guarantee you uninterrupted service or the correction of any errors.

Upon discovery of a defect in the product, except in the Software, within the Warranty Period, you should contact Wacom Technical Support via telephone, email, or fax to obtain an RMA (Return Merchandise Authorization) number and instructions for shipping the product to a service location designated by Wacom. You should send the product, shipping charges prepaid, to the designated service location, accompanied by the return authorization number, your name, address and telephone number, proof of purchase date, and a description of the defect. Wacom will pay for return shipping by United Parcel Service or by an equivalent service as chosen by Wacom.

Wacom's sole obligation and entire liability under this warranty shall be, at Wacom's option, either the repair or replacement of the defective product or parts thereof of which Wacom is notified during the Warranty Period; provided, however, that you are responsible for (i) the cost of transportation of the product to the designated service location and (ii) any loss or damage to the product resulting from such transportation.

Wacom shall have no responsibility to repair or replace the product if the failure of the product has resulted from accident, abuse, misuse, negligence, or unauthorized modification or repair, or if it has been handled or stored other than in accordance with Wacom's storage instructions.

Any descriptions, drawings, specifications, samples, models, bulletins, or similar material, used in connection with the sale of the product, shall not be construed as an express warranty that the product will conform or comply with your requirements.

EXCEPT FOR THE LIMITED WARRANTY DESCRIBED ABOVE, THERE ARE NO OTHER WARRANTIES MADE BY WACOM ON THIS PRODUCT. NO ORAL OR WRITTEN INFORMATION OR ADVICE GIVEN BY WACOM, ITS DEALERS, DISTRIBUTORS, AGENTS, OR EMPLOYEES SHALL CREATE A WARRANTY OR IN ANY WAY INCREASE THE SCOPE OF THIS WARRANTY, AND YOU MAY NOT RELY ON ANY SUCH INFORMATION OR ADVICE. THIS WARRANTY GIVES YOU SPECIFIC LEGAL RIGHTS, AND YOU MAY ALSO HAVE OTHER RIGHTS WHICH VARY FROM COUNTRY TO COUNTRY.





WACOM LIMITS THE DURATION OF ANY LEGALLY IMPLIED WARRANTIES INCLUDING IMPLIED WARRANTIES OF MERCHANTABILITY OR FITNESS FOR A PARTICULAR PURPOSE, TO THE DURATION OF WACOM'S EXPRESS WARRANTY. SOME COUNTRIES DO NOT ALLOW LIMITATIONS ON HOW LONG AN IMPLIED WARRANTY LASTS, SO THE ABOVE LIMITATION MAY NOT APPLY TO YOU.

NEITHER WACOM NOR ANYONE ELSE WHO HAS BEEN INVOLVED IN THE CREATION, PRODUCTION, OR DELIVERY OF THIS PRODUCT SHALL BE LIABLE FOR ANY DIRECT, CONSEQUENTIAL, OR INCIDENTAL DAMAGES (INCLUDING DAMAGES FOR LOSS OF BUSINESS PROFITS, BUSINESS INTERRUPTION, LOSS OF BUSINESS INFORMATION AND THE LIKE) ARISING OUT OF THE USE OF OR INABILITY TO USE SUCH PRODUCT, EVEN IF WACOM HAS BEEN ADVISED OF THE POSSIBILITY OF SUCH DAMAGES. SOME COUNTRIES DO NOT ALLOW THE EXCLUSION OR LIMITATION OF INCIDENTAL OR CONSEQUENTIAL DAMAGES, SO THE ABOVE LIMITATION OR EXCLUSION MAY NOT APPLY TO YOU.

In the event that any of the above limitations are held unenforceable, Wacom's liability for any damages to you or any party shall not exceed the purchase price you paid, regardless of the form of any claim.

This Limited Warranty is governed by the laws of the United States of America and the state of Washington.

This Limited Warranty is valid for and only applies to products purchased and used inside Central America, South America or the Caribbean.

## WARRANTY SERVICE

To obtain Warranty service within Central America, South America or the Caribbean contact your local dealer or distributor.

Wacom Customer Care Center

Spanish: <http://www.wacom.com/sp/productsupport/email.cfm>

Portuguese: <http://www.wacom.com/pr/productsupport/email.cfm>

Should you have any questions about this Agreement, or if you desire to contact Wacom for any reason, please contact in writing:

Wacom Technology Corporation  
1311 SE Cardinal Court  
Vancouver, Washington 98683  
U.S.A.



## LIMITED WARRANTY (EUROPE, AFRICA AND MIDDLE EAST)

WACOM warrants to you, as the initial purchaser, (hereinafter referred to as "you" or "the customer") that the product hardware will remain free from defects in materials and workmanship under normal use and service for a warranty period of TWO (2) YEARS, and in case of Cintiq products for a warranty period of THREE (3) YEARS, commencing from the purchase date and provided that the product was unused at the time of purchase. Defects in wear parts (e.g. pen nibs, tablet surfaces and batteries) resulting from normal wear and tear are exempt from the warranty. Furthermore, WACOM warrants that the data carriers delivered with the product are free from defects in materials and workmanship under normal use for a period of SIX (6) MONTHS from the date of purchase.

If during the applicable warranty period the product, excluding any software, is discovered to be defective, it should be returned immediately to the place of purchase in its original packaging together with your name, address, and telephone number, a description of the problem, and a copy of the original receipt. The customer shall be liable for any possible damage or loss of the product during transit to the place of purchase for this purpose.

WACOM's sole obligation and entire liability under this warranty shall be, at WACOM's option, either the repair or the replacement of the product or parts thereof that prove defective and that were returned within the applicable warranty period.

WACOM does not warrant to repair or replace the product if: (a) the damage to the product results from accident, misuse, improper use, negligence or unauthorised alteration or repair; (b) the product was not handled or stored according to the instructions provided by WACOM; (c) the damage resulted from normal wear and tear of product parts; or d) the serial number affixed by WACOM has been removed or rendered unintelligible.

Any descriptions, drawings, specifications, samples, models, notifications or similar material provided in connection with the purchase of the product cannot be taken as an explicit guarantee that the product corresponds to or fulfils your requirements.

The warranty guaranteed by law remains unaffected. You can claim defects of the product in accordance with the relevant legal provisions.



WACOM shall only be liable for itself and its vicarious agents if a material contractual obligation has been culpably breached in a manner jeopardising the purpose of the contract or the damage is due to intentional acts or omissions or gross negligence. A material contractual obligation is an obligation which is essential to the proper performance of the contract on which the other party will typically rely. In case that the culpable infringement of such a material contractual obligation is not due to intention or gross negligence, the liability of a party shall be limited to such damages being typical for the contract and which were reasonably foreseeable at the time of the closure of the contract. Where these Terms and Conditions preclude or limit liability, this also applies to the personal liability of the executive officers of the party concerned, its employees, agents and subcontractors. The provisions of the product liability law (Produkthaftungsgesetz) remain unaffected.

If, when a claim made under this warranty is checked, it emerges that it is outside the permitted time period or is not covered by the warranty or that the product is not defective, the customer will reimburse WACOM for associated costs.

This limited warranty shall apply if the registered office of the vendor is situated in the EU or Iceland, Norway, Jersey, Switzerland, Russia, the Ukraine, Croatia, Serbia, Tunisia, Turkey, Syria, Lebanon, Jordan, Israel, Egypt, the United Arab Emirates, Iran or South Africa.

This warranty is subject to German law. However, the applicability of the United Nations Convention on Contracts for the International Sale of Goods is explicitly excluded. The city of Krefeld, Germany, is the sole place of jurisdiction for all claims arising from this contractual relationship and all disputes between the parties resulting from the formation, handling or termination of the contractual relationship, provided that the customer is a trader, a legal entity or fund under public law. The jurisdiction agreement shall also apply for customers who do not have a general place of jurisdiction in Germany. The jurisdiction agreement shall not apply if, due to legal provisions, a different sole place of jurisdiction must be established for the case. Furthermore, WACOM is authorised to file a lawsuit against the headquarters of the customer.

Should one of the provisions of this limited warranty be or become void, the validity of the other provisions shall not be affected, in full or in part. Should a provision be invalid, the legally permissible regulation most closely resembling the invalid regulation shall apply in its place. If you have any questions about this agreement, or would like to contact WACOM for another reason, please write to us at this address:

WACOM Europe GmbH  
Europark Fichtenhain A9  
47807 Krefeld  
GERMANY

