

EUT Internal Photos

Figure 10
Internal View (Removed Back Cover)



Figure 11
Internal View



Figure 12
Internal View (Removed Front Frame, LCD Panel, Front View)



Figure 13
Internal View (Removed Switch Control Board)

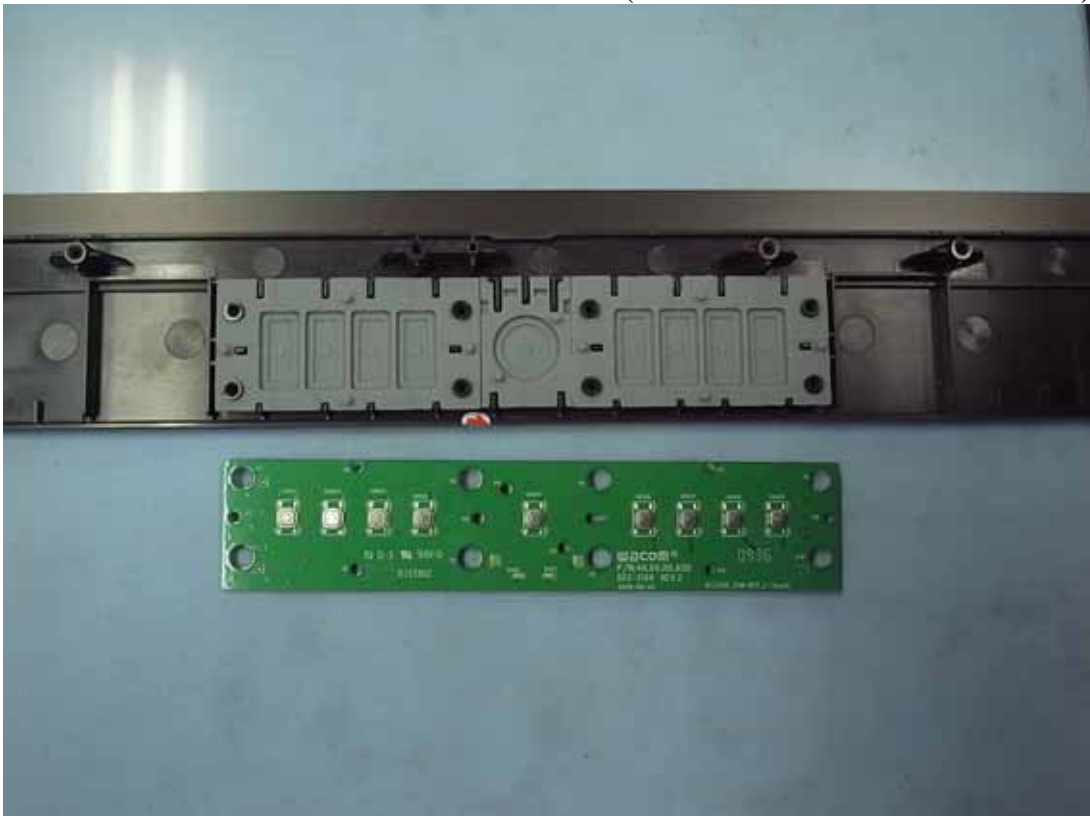


Figure 14
Internal View (Switch Control Board, Front View)



Figure 15
Internal View (Switch Control Board, Back View)

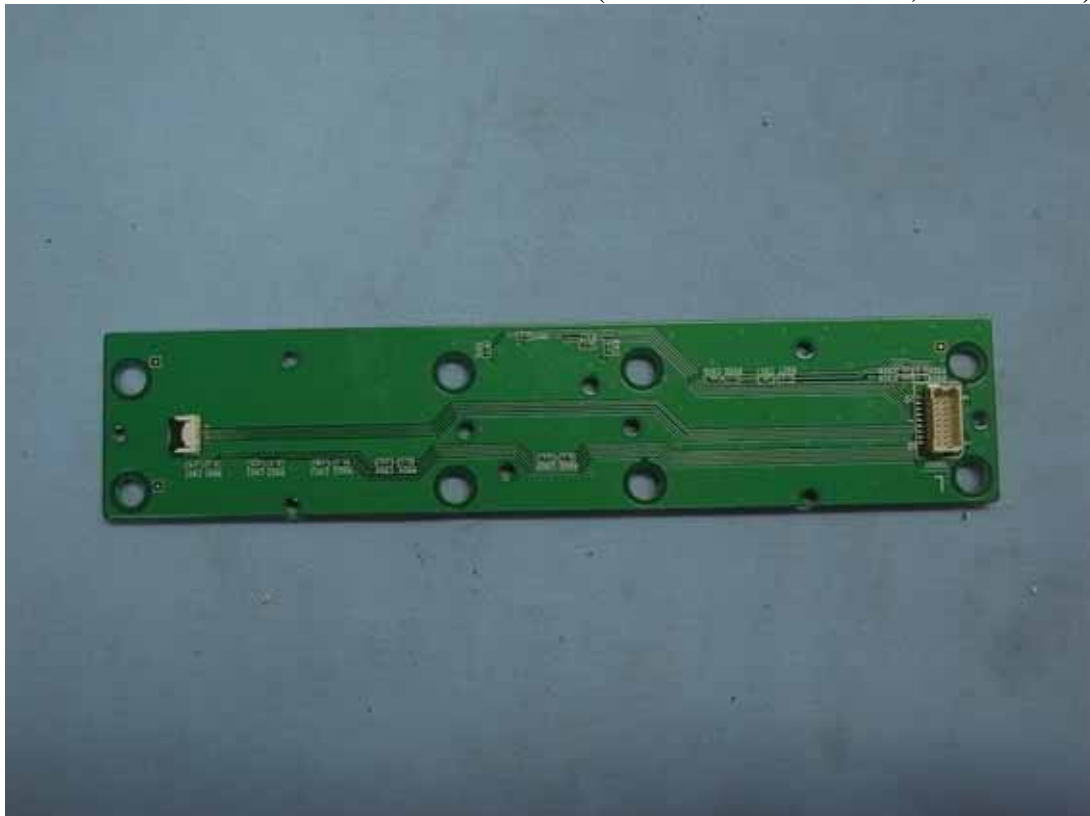


Figure 16
Internal View (Switch Control Board, Front View)

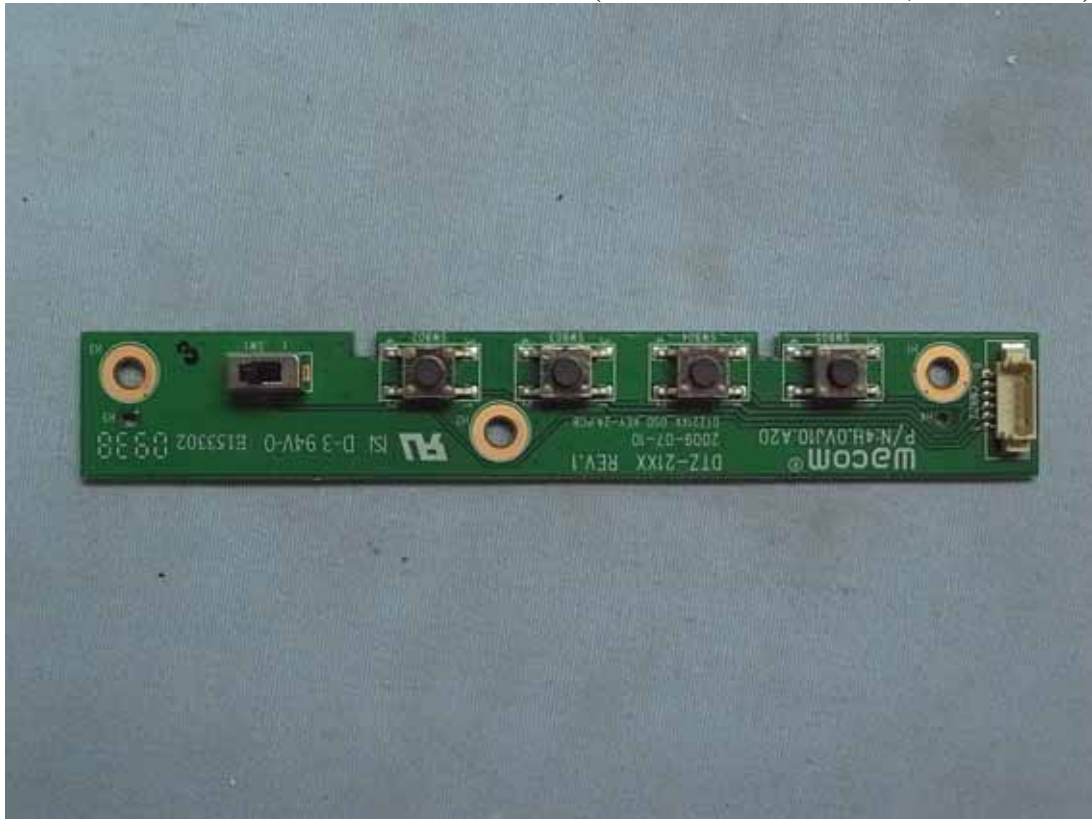


Figure 17
Internal View (Switch Control Board, Back View)



Figure 18
Internal View (Switch Control & LED Board, Front View)



Figure 19
Internal View (Switch Control & LED Board, Back View)

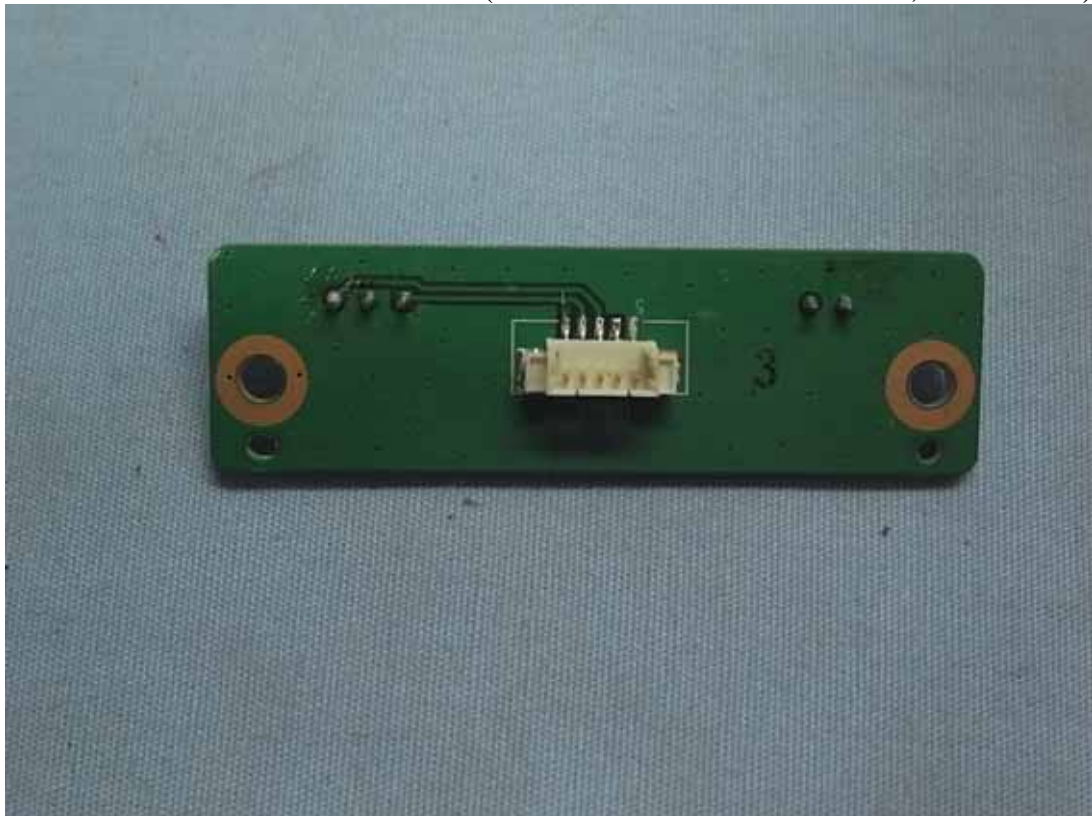


Figure 20
Internal View (Removed Back Cover)

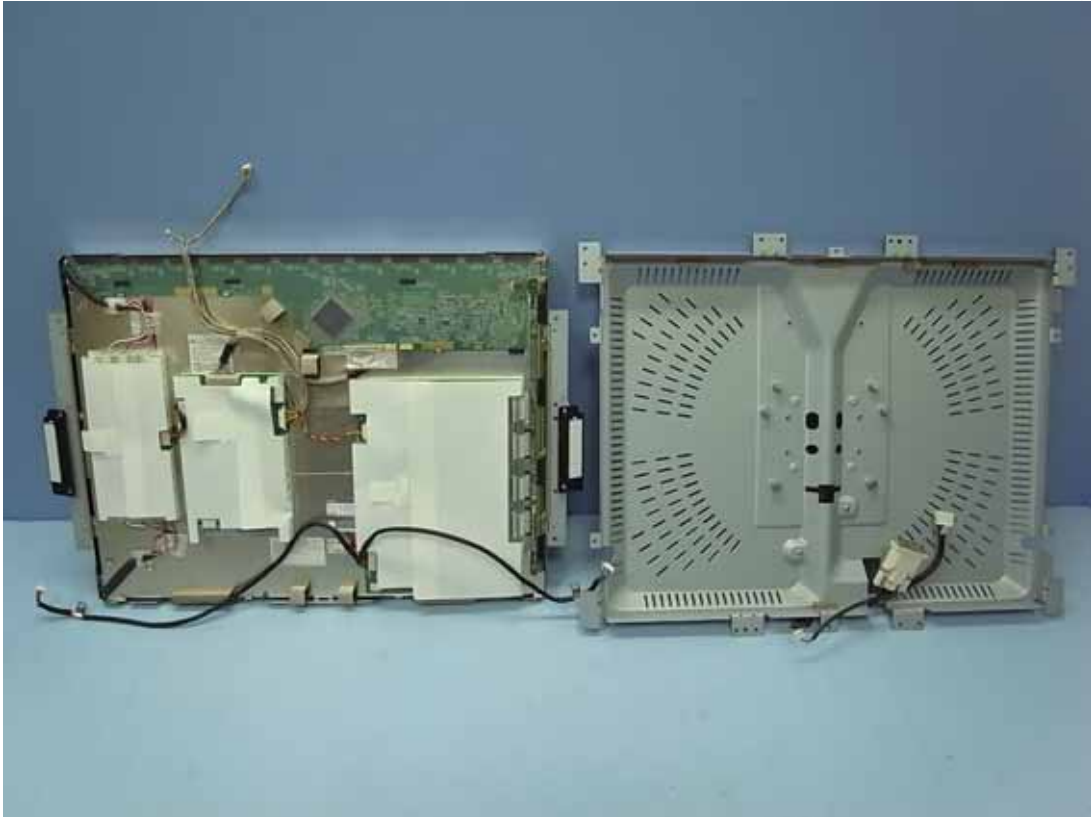


Figure 21
Internal View (Back Cover)



Figure 22
Internal View (Removed Back Cover)



Figure 23
Internal View (Removed PCB)



Figure 24
Internal View (Inverter Board, Front View)



Figure 25
Internal View (Inverter Board, Back View)

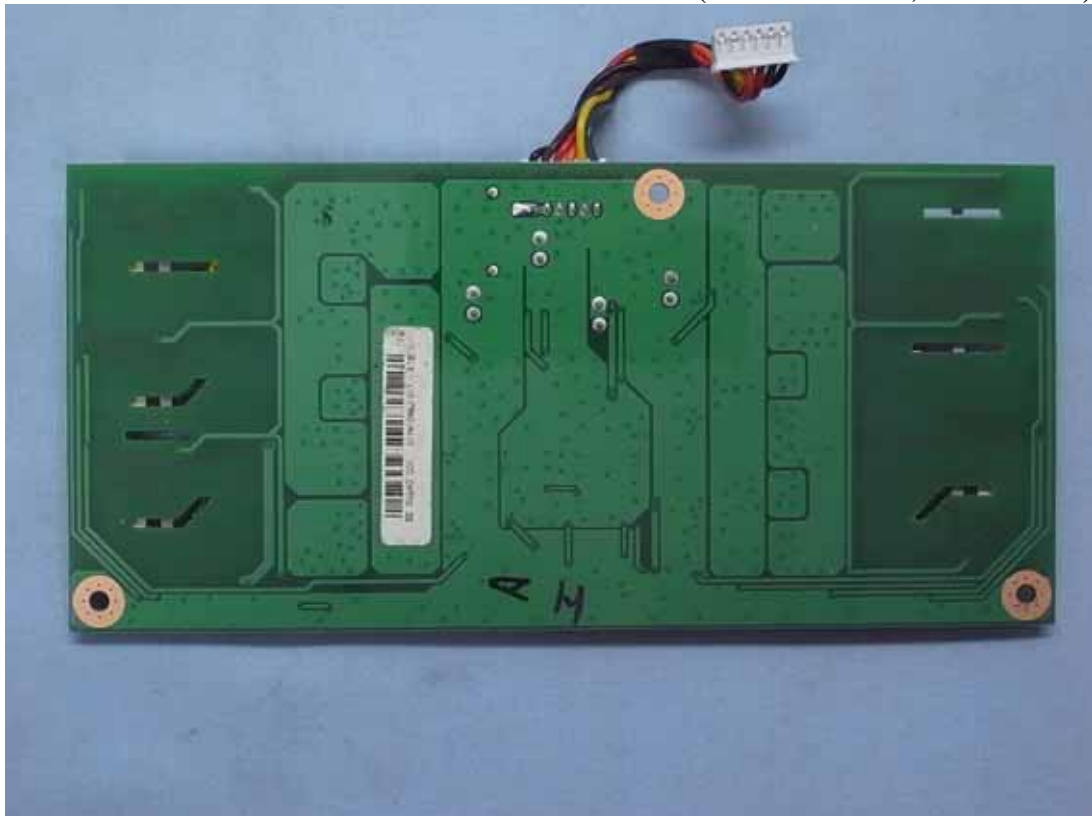


Figure 26
Internal View (Main Board, Front View)



Figure 27
Internal View (Main Board, Back View)



Figure 28
Internal View (Control Board, Front View)



Figure 29
Internal View (Control Board, Back View)

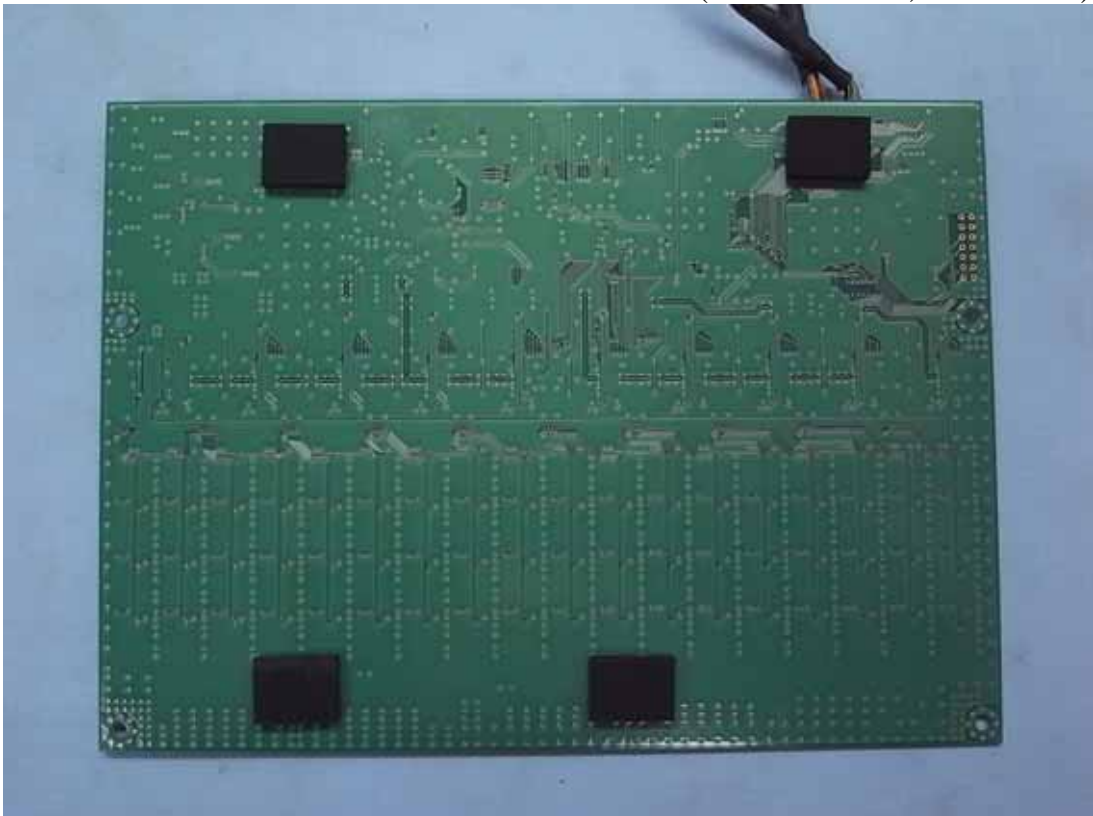


Figure 30
Internal View (LVDS Board, Front View)

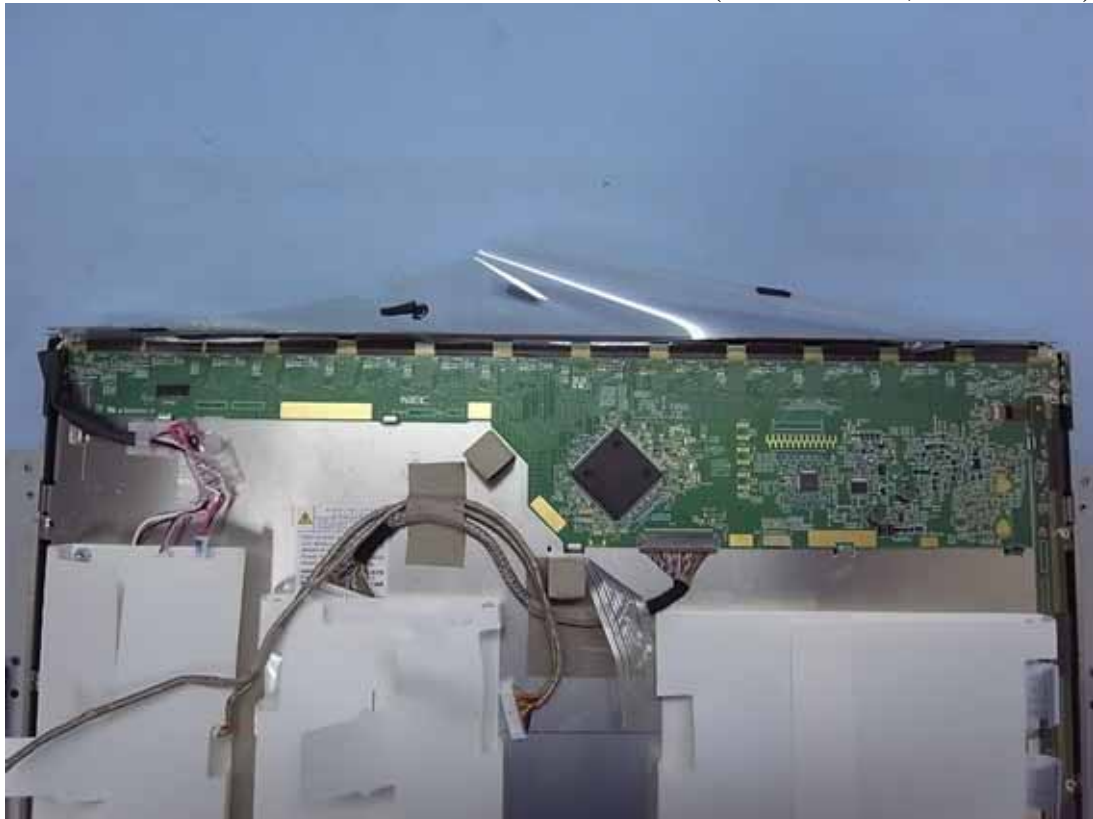


Figure 31
Internal View (LVDS Board, Back View)



Figure 32
Internal View (LVDS Board, Front View)



Figure 33
Internal View (LVDS Board, Back View)



Figure 34
Internal View (Label View)



Figure 35
Pen, Internal View (TX Module, Front View)



Figure 36
Pen, Internal View (TX Module, Back View)

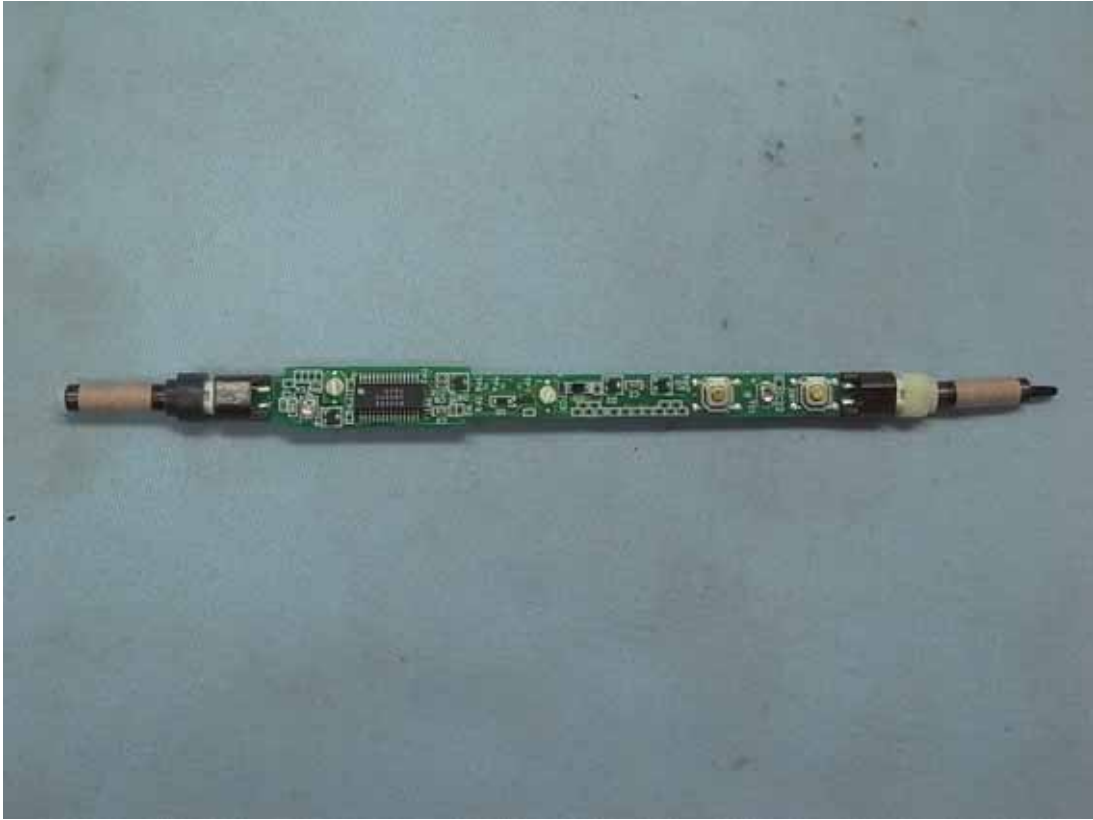


Figure 37
D-Sub to DVI Cable, DVI-D to DVI Cable

