

WACOM® Cintiq Pro

Quick Start Guide



wacom.com/start



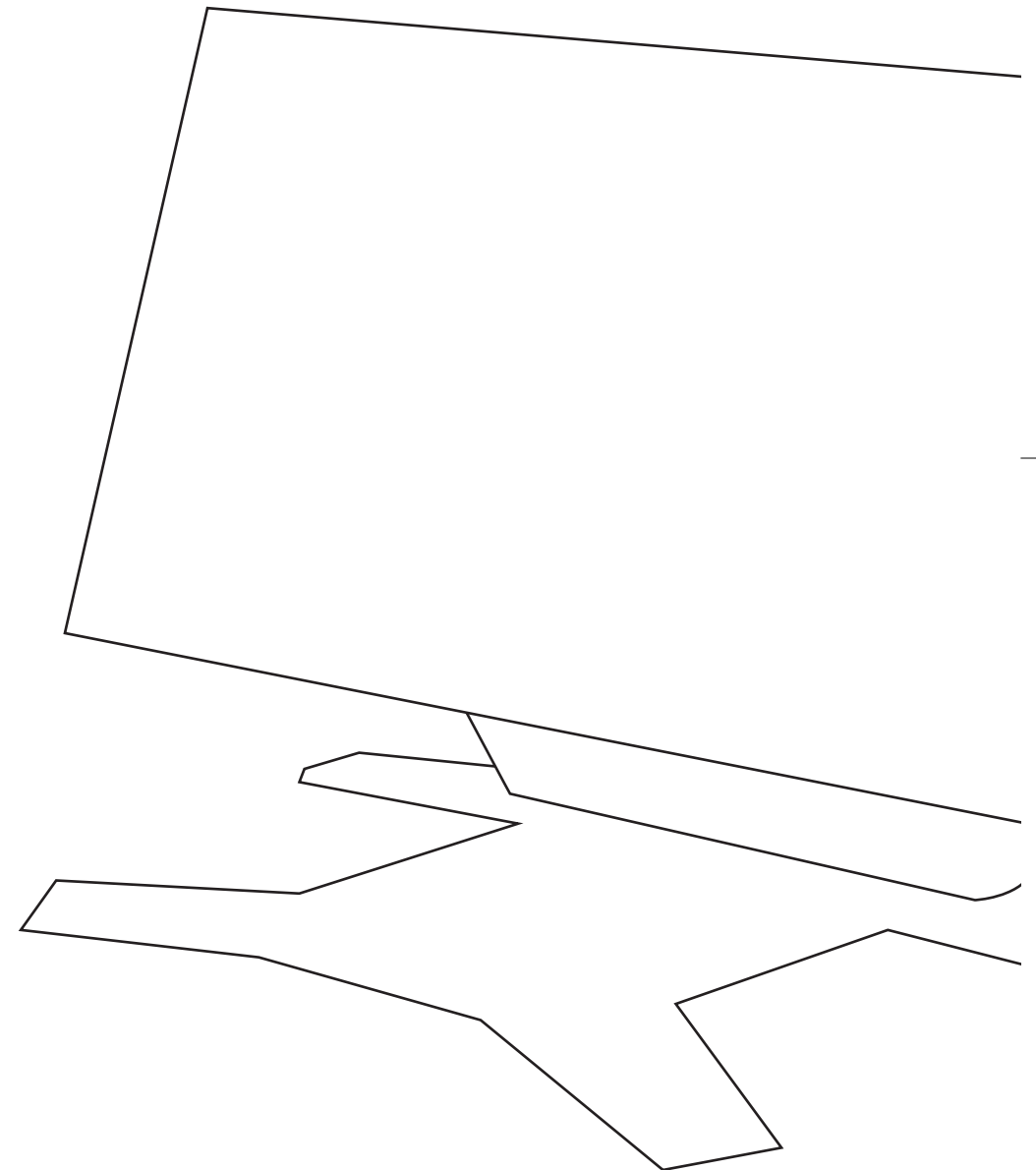
account.wacom.com



wacom.com/manuals

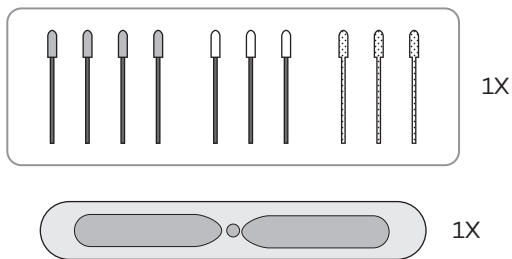
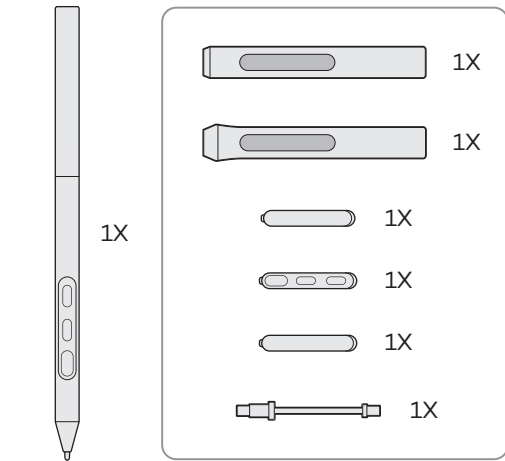
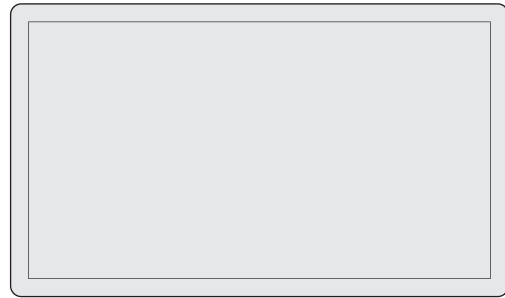


wacom.com/support

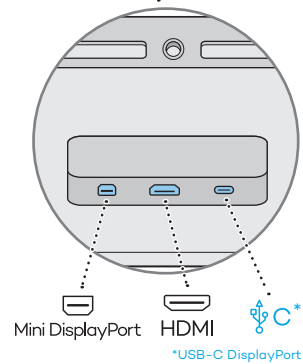
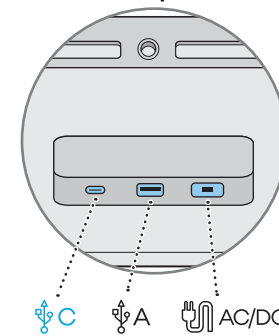
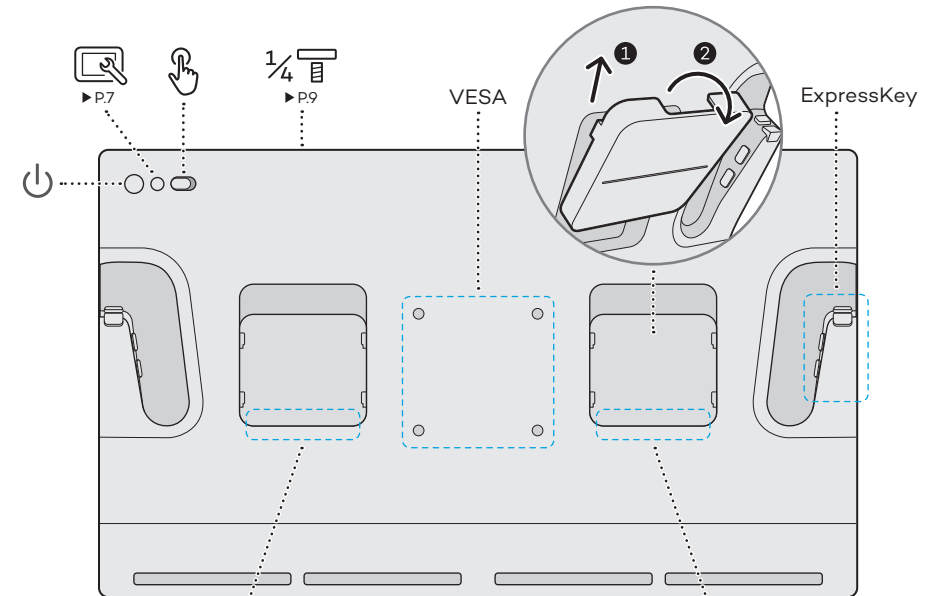
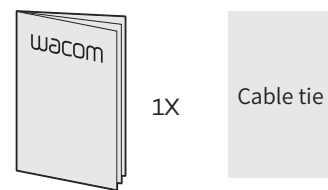
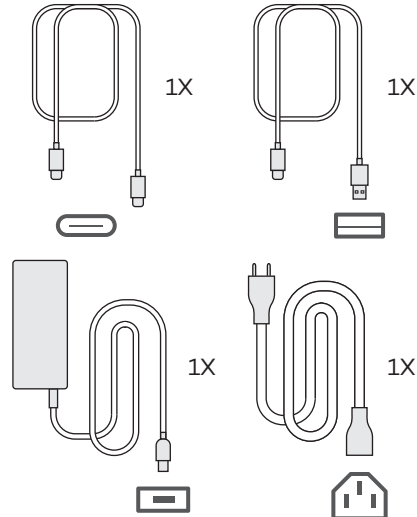


wacom®

Cintiq Pro 27



2



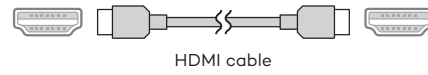
3

! EN HDMI cable and Mini Displayport cable are not included into the product. You can use them on the market and purchase the USB Type-C to A adapter from Wacom.

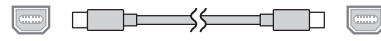
FR Les câbles HDMI et Mini DisplayPort ne sont pas inclus avec le produit. Lorsque vous connectez ce produit à votre ordinateur via HDMI ou DisplayPort, veuillez utiliser uniquement un câble disponible dans le commerce avec la certification de produit indiquée.

ES HDMI cable and Mini Displayport cable are not included into the product. You can use them on the market and purchase the USB Type-C to A adapter from Wacom.

PT HDMI cable and Mini Displayport cable are not included into the product. You can use them on the market and purchase the USB Type-C to A adapter from Wacom.



HDMI cable



Mini DisplayPort cable



Mini DisplayPort to DisplayPort cable

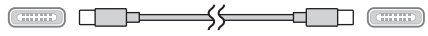
! Caution

EN The included Wacom USB cable (C-C) and Wacom USB cable (C-A) are designed exclusively for use with this product. Using the included cables with other products, or differently from the connection example, may cause unexpected issues or damage to your PC and peripheral devices.

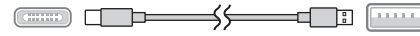
ES The included Wacom USB cable (C-C) and Wacom USB cable (C-A) are designed exclusively for use with this product. Using the included cables with other products, or differently from the connection example, may cause unexpected issues or damage to your PC and peripheral devices.

FR Le câble USB Wacom (C-C) et le câble USB Wacom (C-A) inclus sont conçus exclusivement pour être utilisés avec ce produit. L'utilisation des câbles fournis avec d'autres produits, ou différemment de l'exemple de connexion, peut provoquer des problèmes inattendus ou endommager votre PC et vos périphériques.

PT The included Wacom USB cable (C-C) and Wacom USB cable (C-A) are designed exclusively for use with this product. Using the included cables with other products, or differently from the connection example, may cause unexpected issues or damage to your PC and peripheral devices.

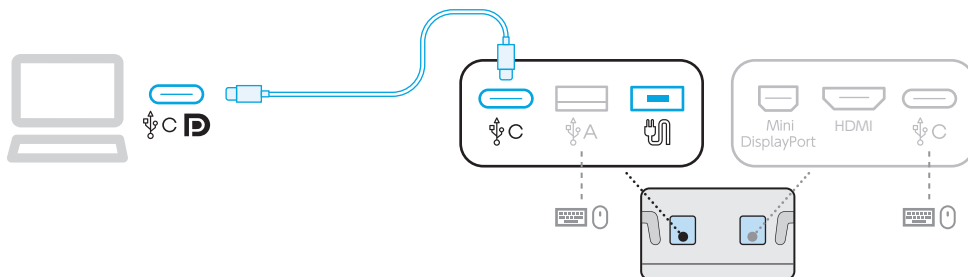


Wacom USB cable (C-C)

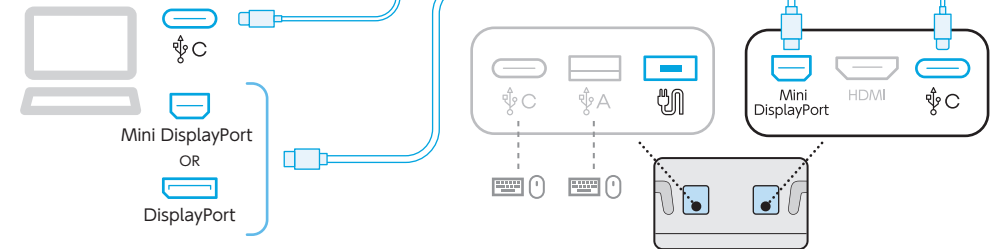


Wacom USB cable (C-A)

1 DisplayPort Alternate Mode on USB-C

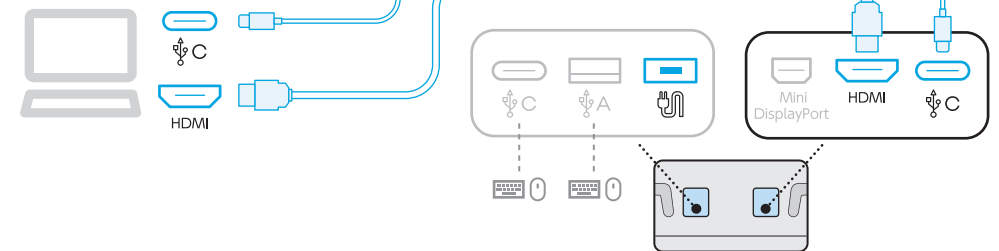


Mini DisplayPort + USB-C



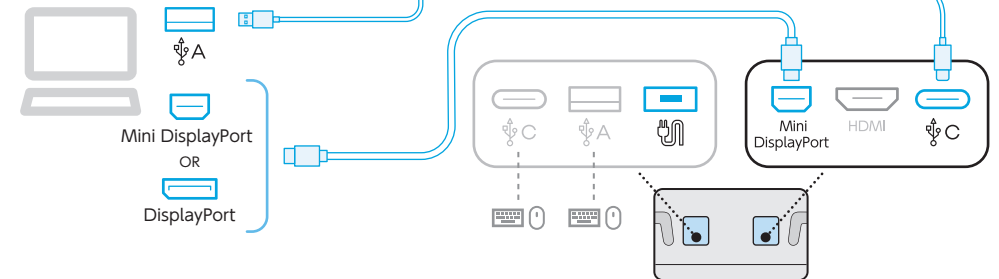
OR

HDMI + USB-C



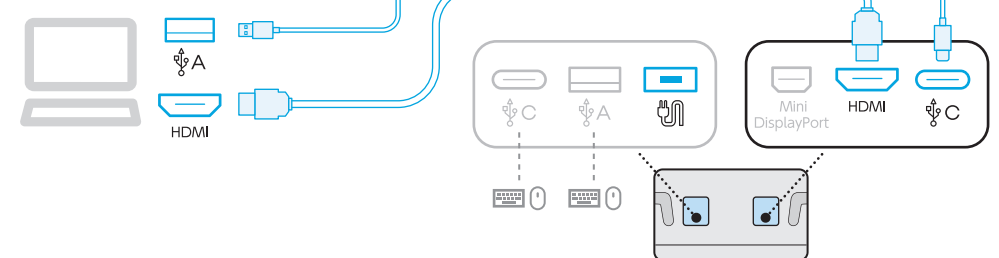
OR

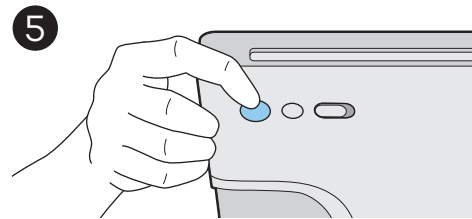
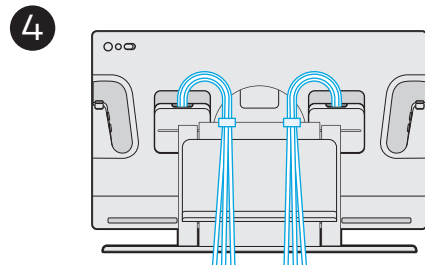
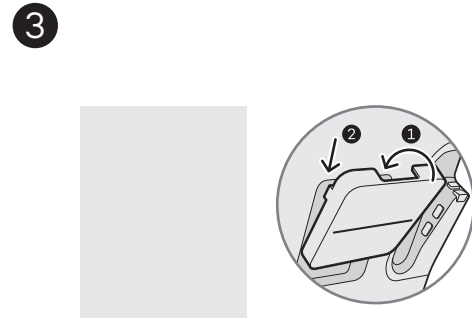
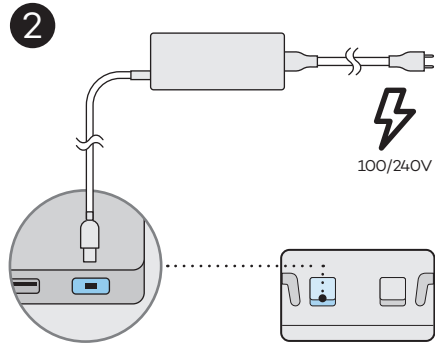
Mini DisplayPort + USB (C-A)



OR

HDMI + USB (C-A)





wacom.com/download

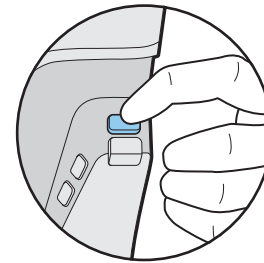
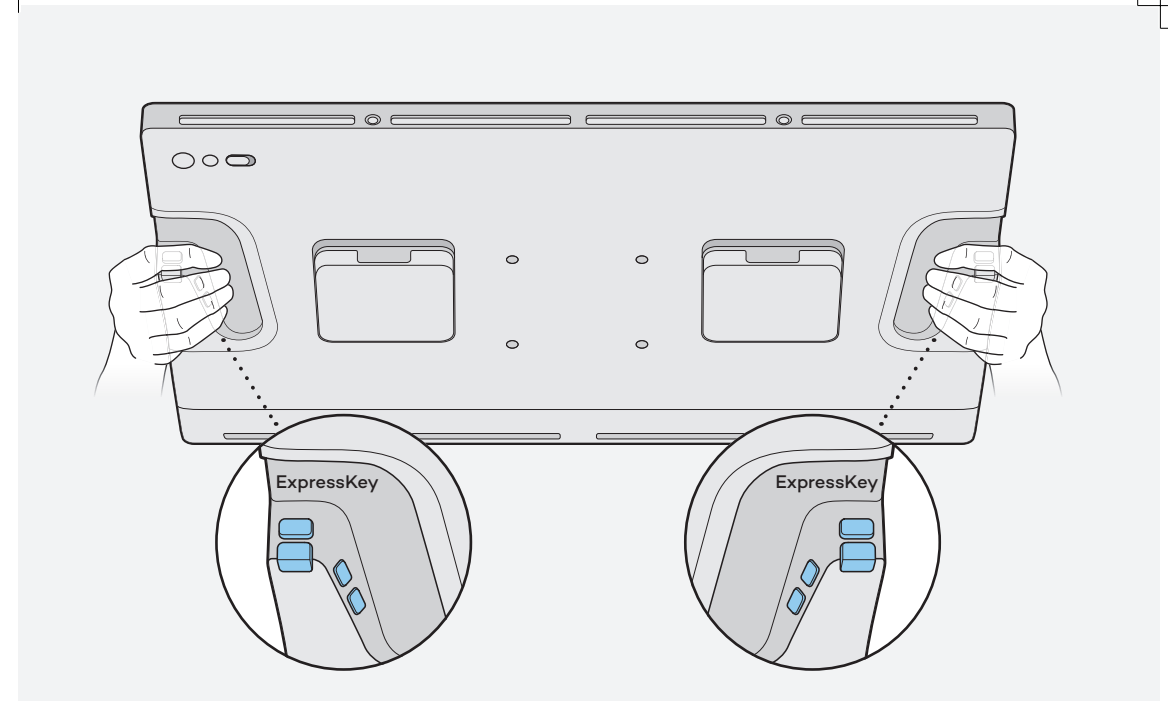
! Download and install the latest driver.

Download and install the latest driver. Then register your product to access all Wacom services.

Il est nécessaire de télécharger et installer le dernier pilote. Inscrivez ensuite votre produit pour accéder à tous les services Wacom.

ES Es necesario descargar e instalar el controlador más reciente. A continuación, registre su producto para acceder a todos los servicios de Wacom.

PT É necessário baixar e instalar o driver mais recente. Depois registre seu produto, para acessar todos os serviços Wacom.

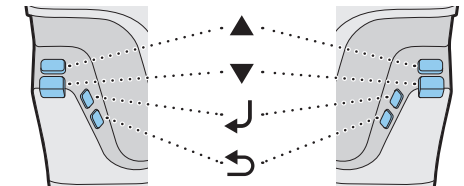
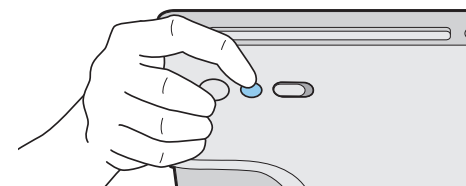


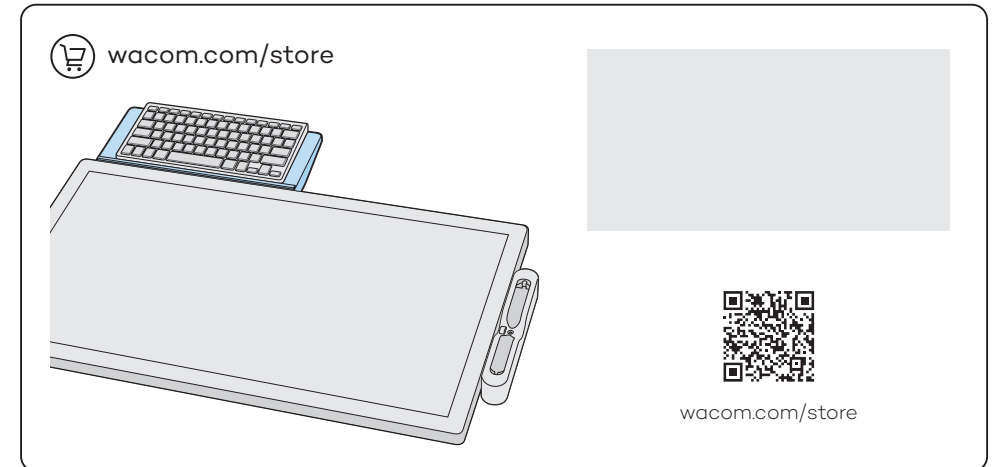
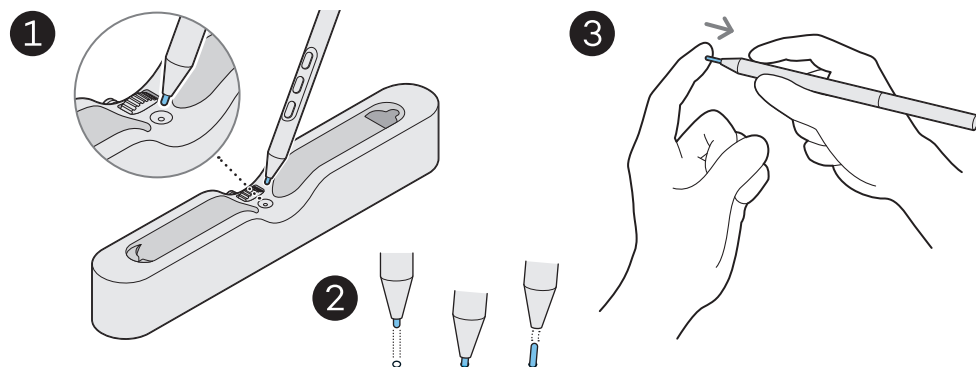
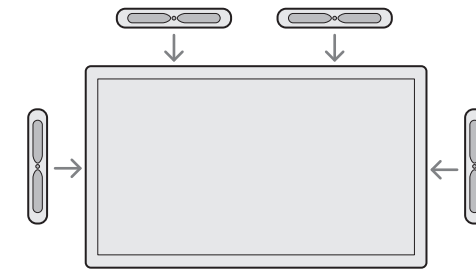
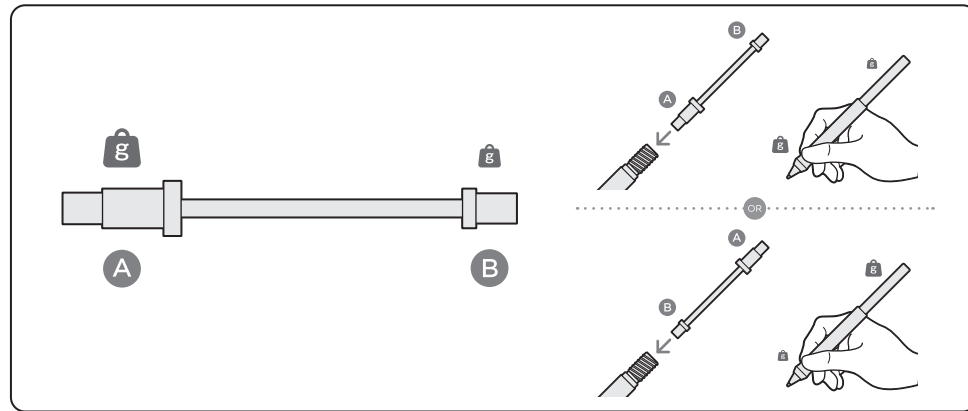
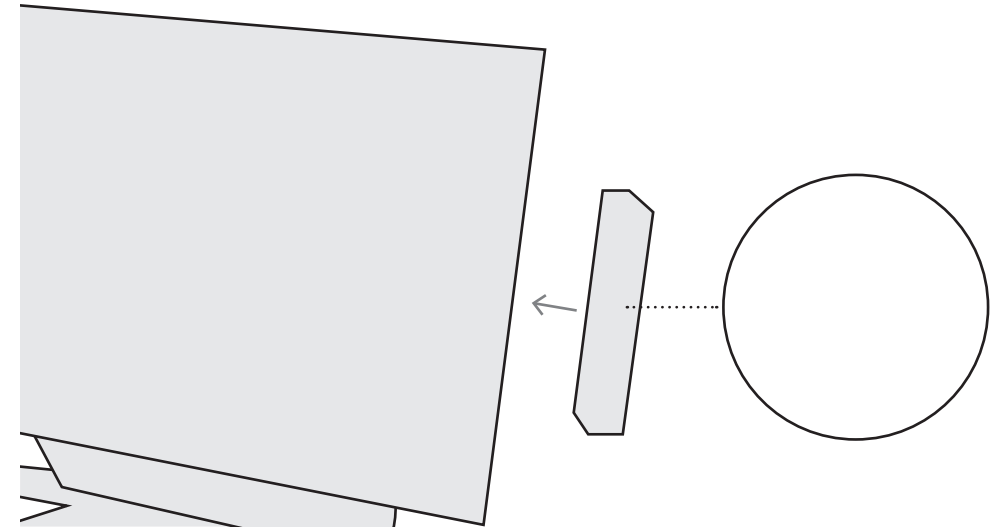
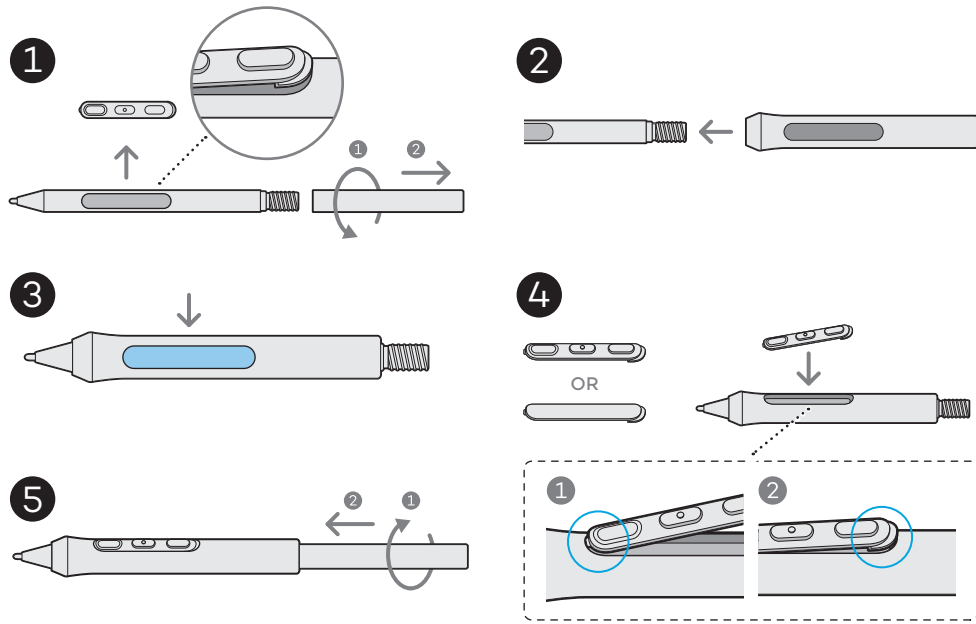
EN When you press the "Display Setting" button, the OSD (Display Setting) control keys are assigned to ExpressKeys.

FR Lorsque vous appuyez sur le bouton «Display Setting», les touches de contrôle OSD (Display Setting) sont attribuées aux touches ExpressKey.

ES When you press the "Display Setting" button, the OSD (Display Setting) control keys are assigned to ExpressKeys.

PT When you press the "Display Setting" button, the OSD (Display Setting) control keys are assigned to ExpressKeys.



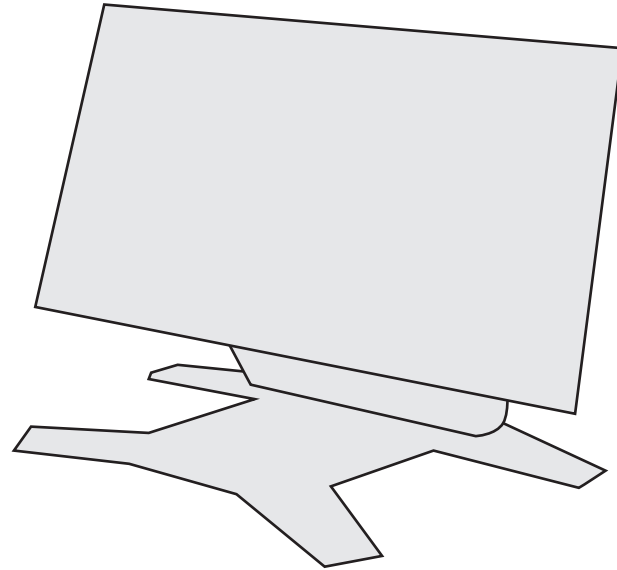


! EN This product was designed to be used with the optional Wacom stand, or a stand that complies with the VESA standard.

FR Ce produit a été conçu pour être utilisé avec le support Wacom en option ou un support conforme à la norme VESA.

ES This product was designed to be used with the optional Wacom stand, or a stand that complies with the VESA standard.

PT This product was designed to be used with the optional Wacom stand, or a stand that complies with the VESA standard.



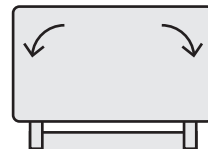
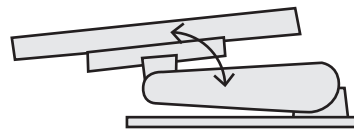
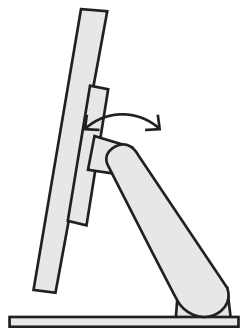
wacom.com/store

EN You can set up the angle and the height according to your work style by attaching the stand; you can also rotate the display.

FR Vous pouvez régler l'angle et la hauteur en fonction de votre style de travail en fixant le support ; vous pouvez également faire pivoter l'affichage.

ES You can set up the angle and the height according to your work style by attaching the stand; you can also rotate the display.

PT You can set up the angle and the height according to your work style by attaching the stand; you can also rotate the display.



! Caution

EN Using this product without a stand may damage the ExpressKeys and cause injury due to instability during use. Please be sure to use this product with a stand as instructed.

FR L'utilisation de ce produit sans support peut endommager les touches ExpressKey et provoquer des blessures dues à l'instabilité pendant l'utilisation. Assurez-vous d'utiliser ce produit avec un support comme indiqué.

IT Using this product without a stand may damage the ExpressKeys and cause injury due to instability during use. Please be sure to use this product with a stand as instructed.

ES Using this product without a stand may damage the ExpressKeys and cause injury due to instability during use. Please be sure to use this product with a stand as instructed.

