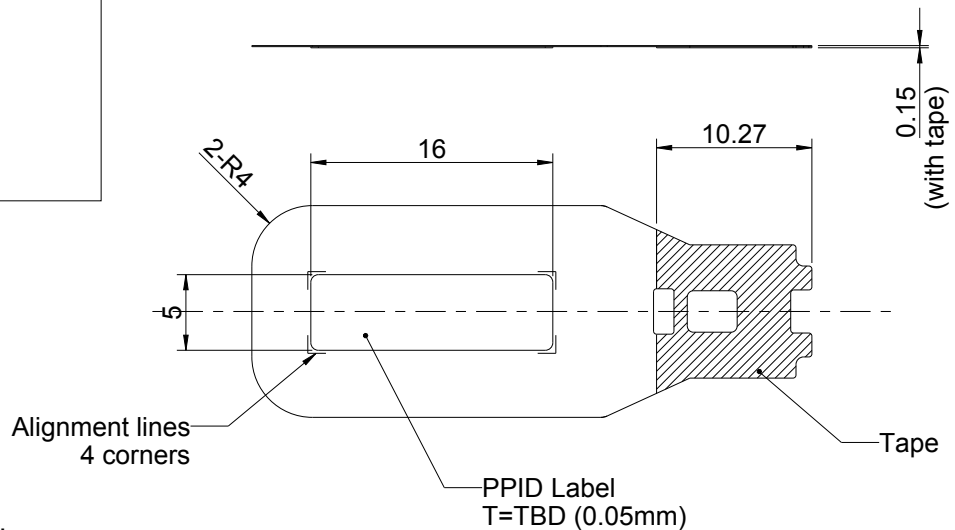
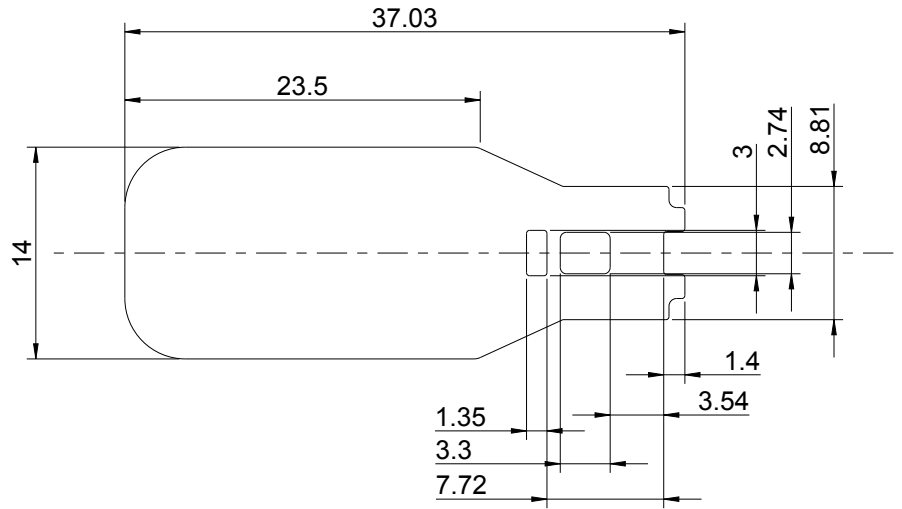
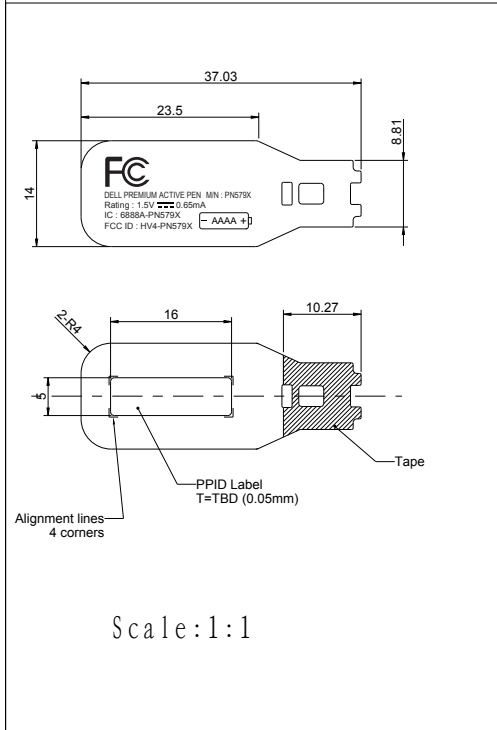


TOLERANCES					Symbol No.	ECN No.	DESCRIPTION	DATE	APPROVE
	A	B	C	D					
0.5 ~ 3	±0.05	±0.05	±0.10	±0.20					
3 or Less	±0.05	±0.10	±0.10	±0.20					
30 or Less	±0.10	±0.15	±0.20	±0.40					
120 or Less	±0.15	±0.25	±0.30	±0.70					
315 or Less	±0.20	±0.40	±0.50	±1.00					
1000 or Less	±0.30	±0.70	±0.80	±1.80					
2000 or Less	±0.50	±1.10	±1.20	±3.00					



- 1) General tolerance is $\pm 0.5\text{mm}$.
- 2) Do not contain the poisonous substance (cadmium, lead, mercury, hexavalent chromium etc.) in the material and ink based on the RoHS Directive.
- 3) The crack, a foreign substance, and a dirt of an appearance side are based inspection standard document (A4D-012A003) 3rd grade. However, the letters have to be readable.
- 4) Manage the difference and the lean of the print within 1mm.
- 5) The paste must not overflow.
- 6) Adhesive power should be over 3.0kgf/cm^2 .
- 7) Do not print label outline.

NO.	ITEM NO.	MODEL NO.	COLOR PLATE	WACOM COL NO.	INSTRUCTION FIGURE	NOTE
MATERIAL		FINISH		QTY.	SCALE	TITLE
					2:1	Reg. Label
						MDL NO.
						SLA-AXXX
						REMARK
APPROVE	CHECK	DESIGN	DRAW			DRAW NO.
2017.XX.XX Kaneda	2017.09.12 Mason.C	2017.09.15 JJ Wen	2017.09.15 JJ Wen			A3K-730AXXX-X
						PAGE