

SY832 WiFi Video Handset User Manual



Federal Communication Commission

Interference Statement

This equipment has been tested and found to comply with the limits for a Class B digital device, pursuant to Part 15 of the FCC Rules. These limits are designed to provide reasonable protection against harmful interference in a residential installation. This equipment generates, uses and can radiate radio frequency energy and, if not installed and used in accordance with the instructions, may cause harmful interference to radio communications. However, there is no guarantee that interference will not occur in a particular installation. If this equipment does cause harmful interference to radio or television reception, which can be determined by turning the equipment off and on, the user is encouraged to try to correct the interference by one of the following measures:

- Reorient or relocate the receiving antenna.
- Increase the separation between the equipment and receiver.
- Connect the equipment into an outlet on a circuit different from that to which the receiver is connected.
- Consult the dealer or an experienced radio/TV technician for help.

This device complies with Part 15 of the FCC Rules. Operation is subject to the following two conditions: (1) This device may not cause harmful interference, and (2) this device must accept any interference received, including interference that may cause undesired operation.

FCC Caution: Any changes or modifications not expressly approved by the party responsible for compliance could void the user's authority to operate this equipment.

IMPORTANT NOTE:

FCC Radiation Exposure Statement:

This equipment complies with FCC radiation exposure limits set forth for an uncontrolled environment. End users must follow the specific operating instructions for satisfying RF exposure compliance. To maintain compliance with FCC RF exposure compliance requirements, please follow operation instruction as documented in this manual.

This transmitter must not be co-located or operating in conjunction with any other antenna or transmitter.

The availability of some specific channels and/or operational frequency bands are country dependent and are firmware programmed at the factory to match the intended destination. The firmware setting is not accessible by the end user.

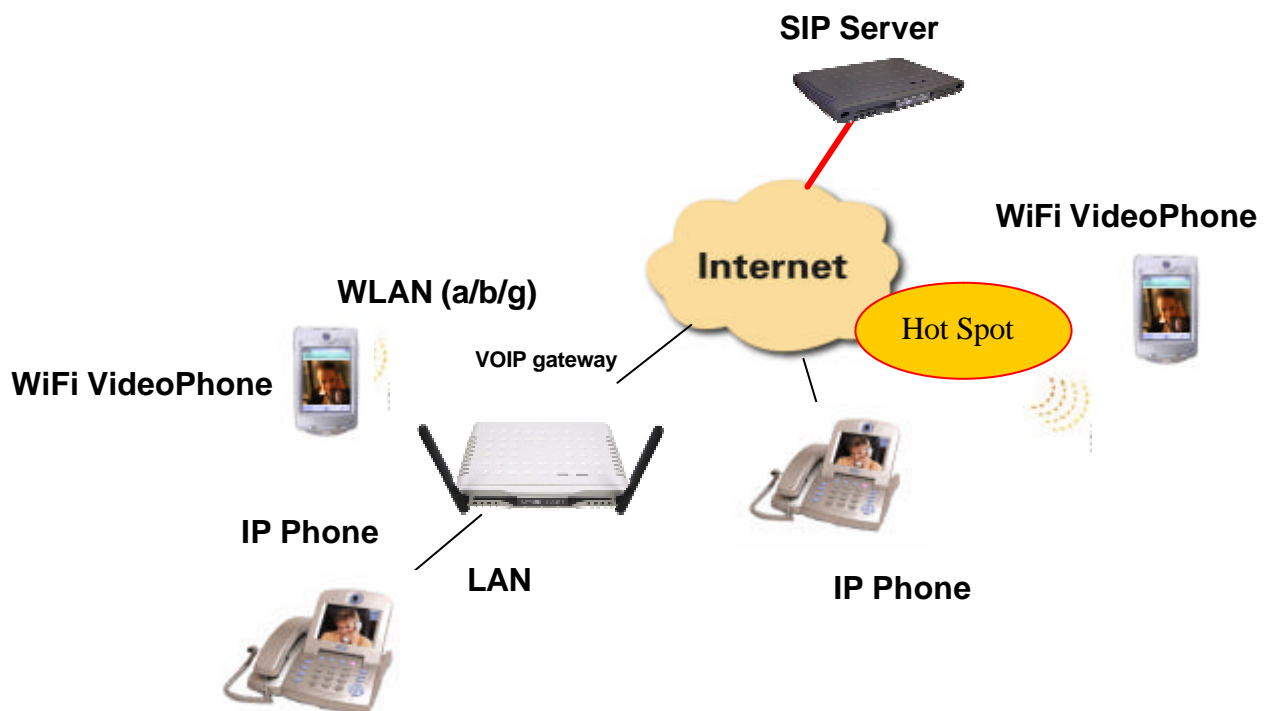
1. Introduction

SY832 is a VoIP video handset which support WiFi standard (IEEE 802.11b/g), you can use it to make a phone call as you are in a WiFi hot spot, for example, airports, school, coffee shops etc., SY832 provides you two calling mechanisms:

- If you are subscribing to a service provider and get a phone number, you can use it just as an IP phone.
- If you are not a subscriber of either service provider, you can also use **P** direct call, however, you have to use a fixed IP address first.

SY832 is not only a video handset; it indeed is a triple-play handheld device. It builds in media player to let you see media or video clips; Web browser provides you the facility to go to the Internet. Besides, it also has some functions such as datebook, calculator, task schedule that give you a more convenient personal information management(PIM).

2. Network Topology



3. Out looking



4. Quick Setup your SY832

Following steps as below setting up your SY832.








4.1 Turn on power, and two welcome screen will be shown (about 30 seconds)

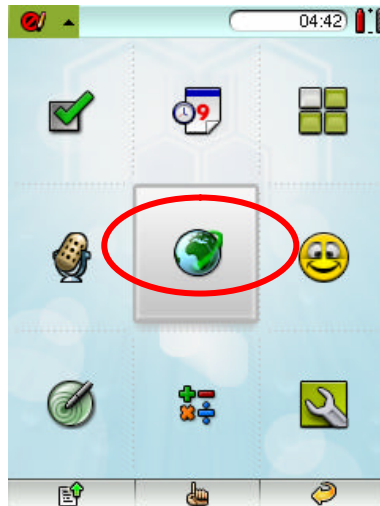



4.2 After power up, you can enter application page by touch the icon in the bottom of the main page.




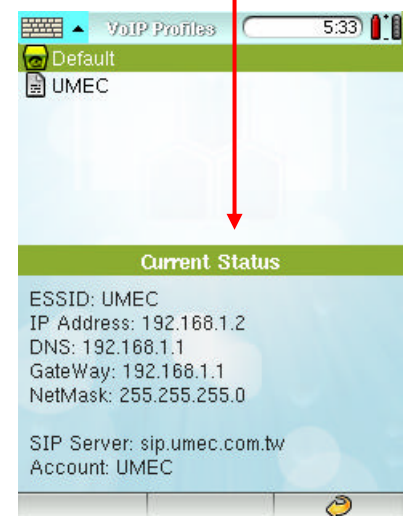
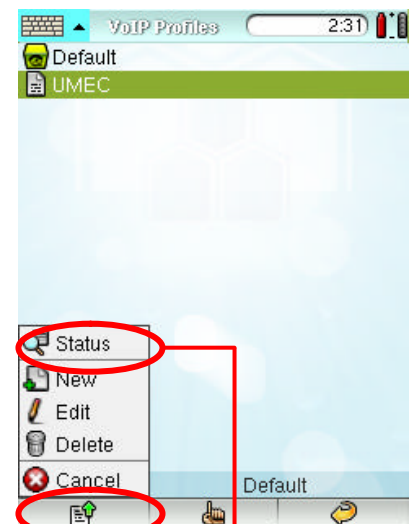
4.3 Click  to enter VOIP set up page. Other functions in this page as below,

-  Date Book
-  Calculator
-  Task Scheduler
-  Calibration
-  Applications
-  Games
-  MultiMedia
-  Setup

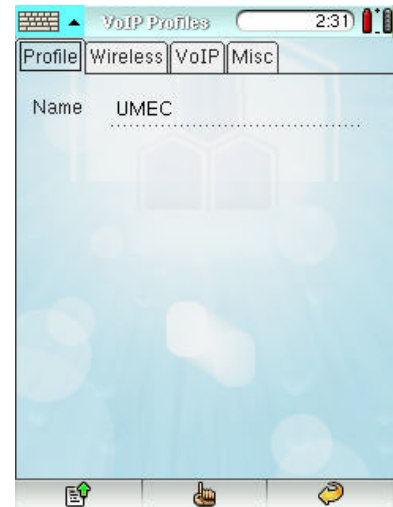


4.4 This is the first page when you enter VoIP Setting, SY832 uses profile-based configuration thus reduce your configure time. You can create or edit profile and active a profile by pressing , an submenu will popup then you can edit or delete selected profile, or create a new profile.

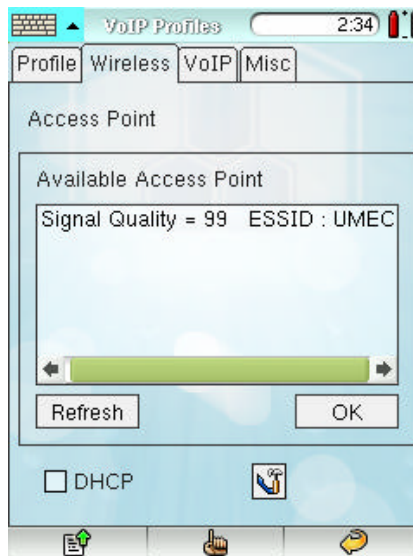
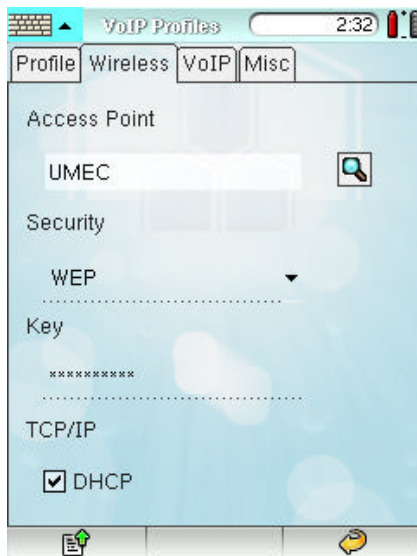
4.5 By click , the profile you selected in the page will be active. SY-832 will connect to access point and sip server, which you configure in profile. You can also see current active profile in this screen



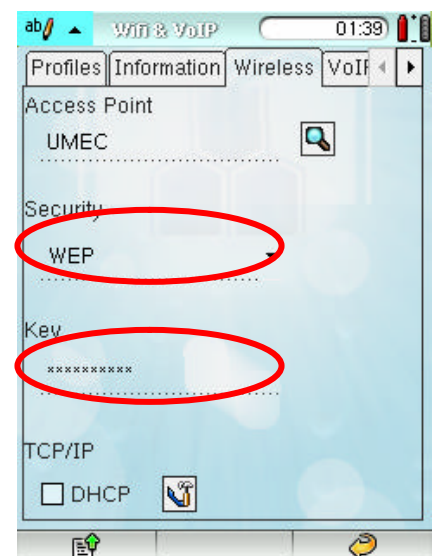
4.6 Select (or add) a profile, push EDIT to enter the setting page, you can change profile name at Profile tab.



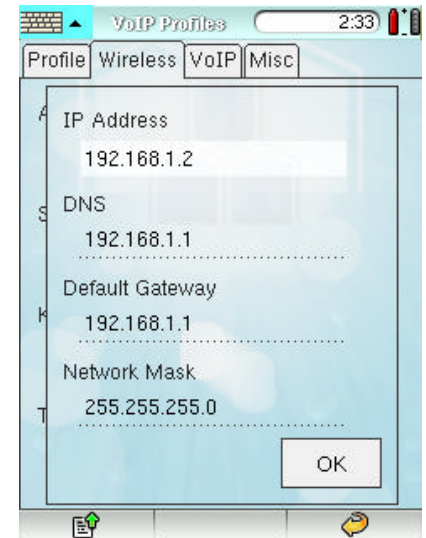
4.7 Setting your wireless connection at Wireless tab. You can scan and select an access point by clicking 



4.8 You might need to provide the Security type and Key if the selected access point has define security policy such as WEP , WPA. Please get these information from your network service provider.



4.9 You can click the DHCP to get the IP from access point. Or provide static IP address and gateway information by click



4.10 You can setup the SIP parameters in VoIP tab, please get these information from your VoIP service provider.

Server: *SIP server IP address*

Account: *Your account (SIP phone number)*

Password: *capital sensitive*

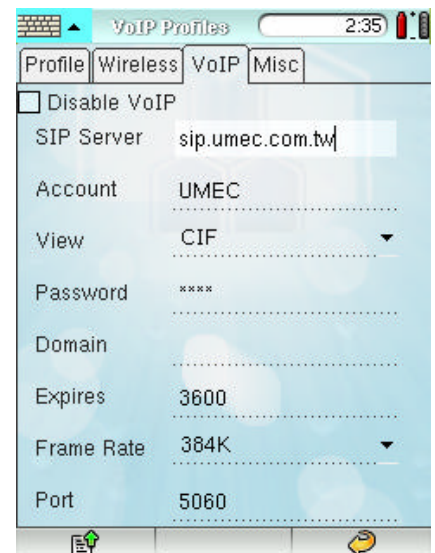
Domain: *Domain Name Server IP address*



View: *CIF/QCIF*

Expires: *default is 3600*

Frame Rate: *recommend is 256K at least*

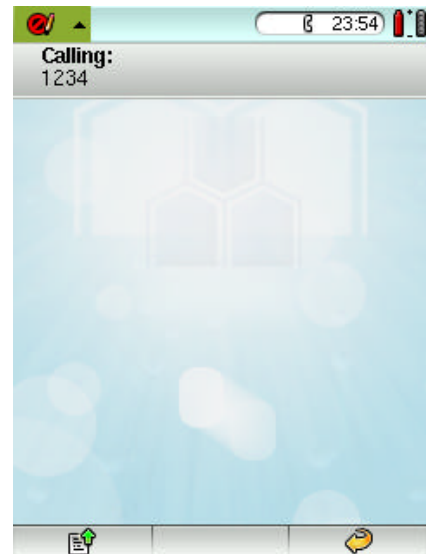
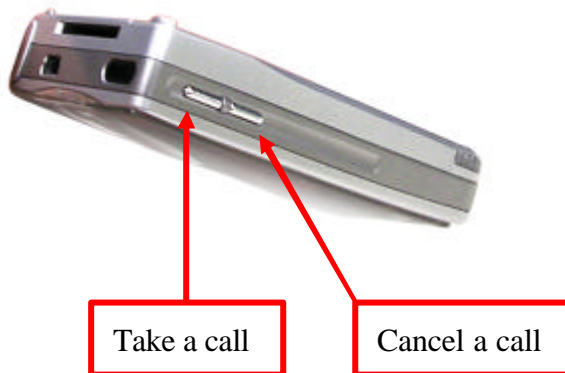
Port: *default is 5060*



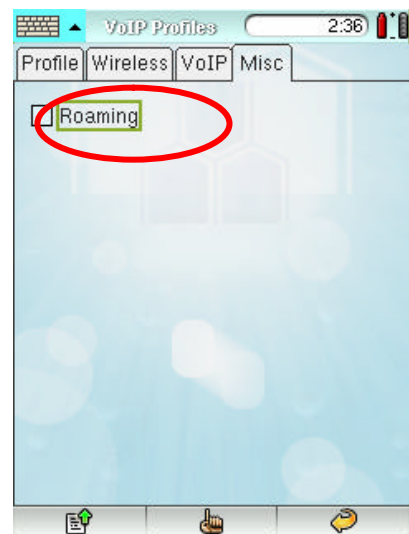
4.11 Click  to apply this profile. In main page, click the screen to enter dial page. You can dial the phone number and click  to make a call.




4.12 You can take incoming call by pressing upper side button. To finish or cancel a call by click lower side button.



4.13 You can enable the Roaming function in Misc tab. It allows SY832 switch between access points those you've ever connected.




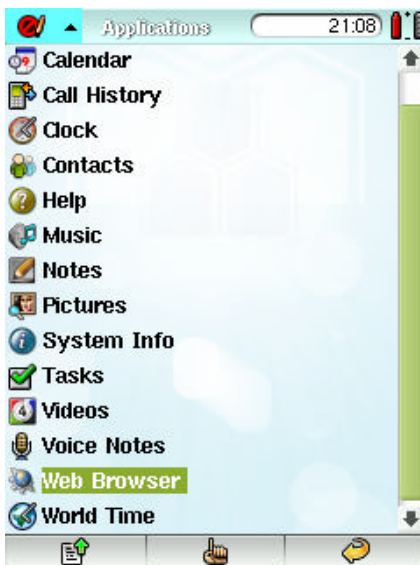
5. Other useful functions in SY832

You can find these application by click  in application page.

5.1 Web Browser

SY832 provides a web browser let you connection to every homepage on internet.

- Click the Web Browser, you'll see the browser page.
- Provide URL and click  to access this web page.



5.2 Remote Update

SY832 provide remote update feature by two methods:

From SD card :

From Wireless :

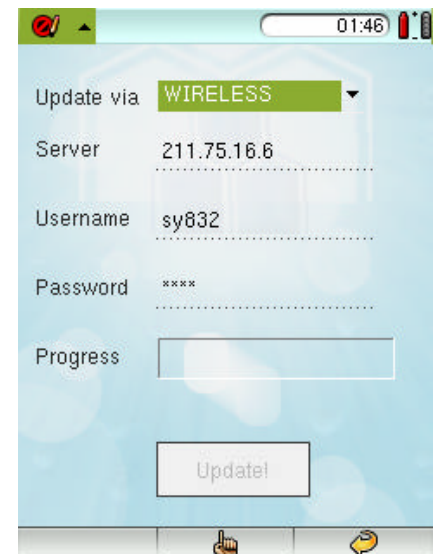
Server: *your TFTP server IP address*

Username: *your authenticated account to the server*

Password: *accoun's password*

Then press **Update** button!

Please don't power off SY832 when update in progress.



5.3 How to use soft keyboard?



5.4 Connect to your Bluetooth Headset

- Please follow your Bluetooth Headset manual to set up bluetooth headset in inquiry mode.
- Click Inquiry button to search bluetooth headset near by.
- Click the headset you want to connect, click Connect button to setup connection.
- You might need to provide the Pin code for setting up connection. Usually PIN code is 0000, if not, please get this information from your bluetooth headset manual.
- As connect successfully, it will show a ☒ sign



6. Spec

	Model	SY832
	VoIP Protocol	IETF RFC3261 SIP
System	Processor	ARM926 @ 266MHz
	Memory	32 MB SDRAM 32MB FLASH
	Display/Capture	2.6"LCD with Touch Panel 300K pixels CMOS Camera
	Interfaces	WiFi 802.11g WLAN x 1 Bluetooth calss 2 x 1 Mini USB x 1 Phone Jack x1 IrDA x 1 Side buttons x 2 Five directions tracking ball
Video	Video Format	H.263 MPEG4 H.264 (optional)
	Resolution	CIF 352x288 pixels QCIF 176x144 pixels
	Transmitting Rate	CIF up to 30 fps
Voice	Voice Codec	G.711/ G.726 G.723.1/G.729ab (optional)
	Voice Quality Control	CNG/AEC/AGC
	Voice Input/Output	Wired/Bluetooth headset
Phone Functions	Network Features	TCP/UDP/IP/PPPoE/DHCP STUN
	Call Functions	Hold/Forward/Transfer/Wait Redial/Mute/Transfer/Auto answer/DTMF
	PIM Functions	Task Schedule/Calendar/Document Handle Video/Voice/Data Triple play
	Address book	500 sets(extendable)
	Accessories	Mini USB Adapter/Charger Stereo Wired headset Battery Pack(inside)
	Dimension	90mm x 56mm x 19mm
	Net Weight	190 g
Environment	Temperature	operation 0 to 45 storage -20 to 70
	Humidity	operation 15% to 85% storage 10% to 90%
	Certification	CE/FCC/CCC
	Power	max 2 W(peak)
	Power Supply	3.7V, 1700 mA/hr Battery Pack