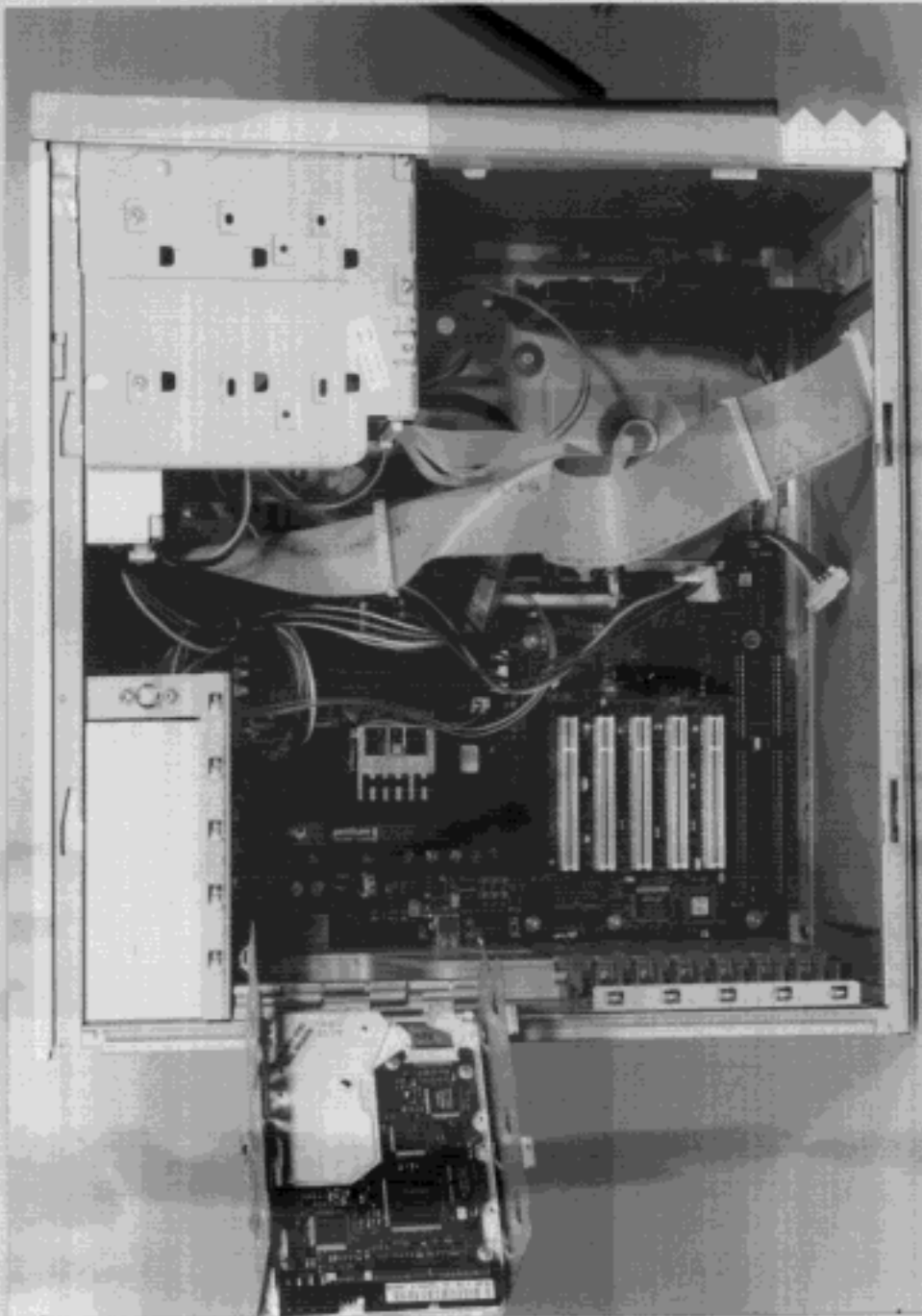


8.3 Opened case, inside view of EUT



SIEMENS
NIXDORF

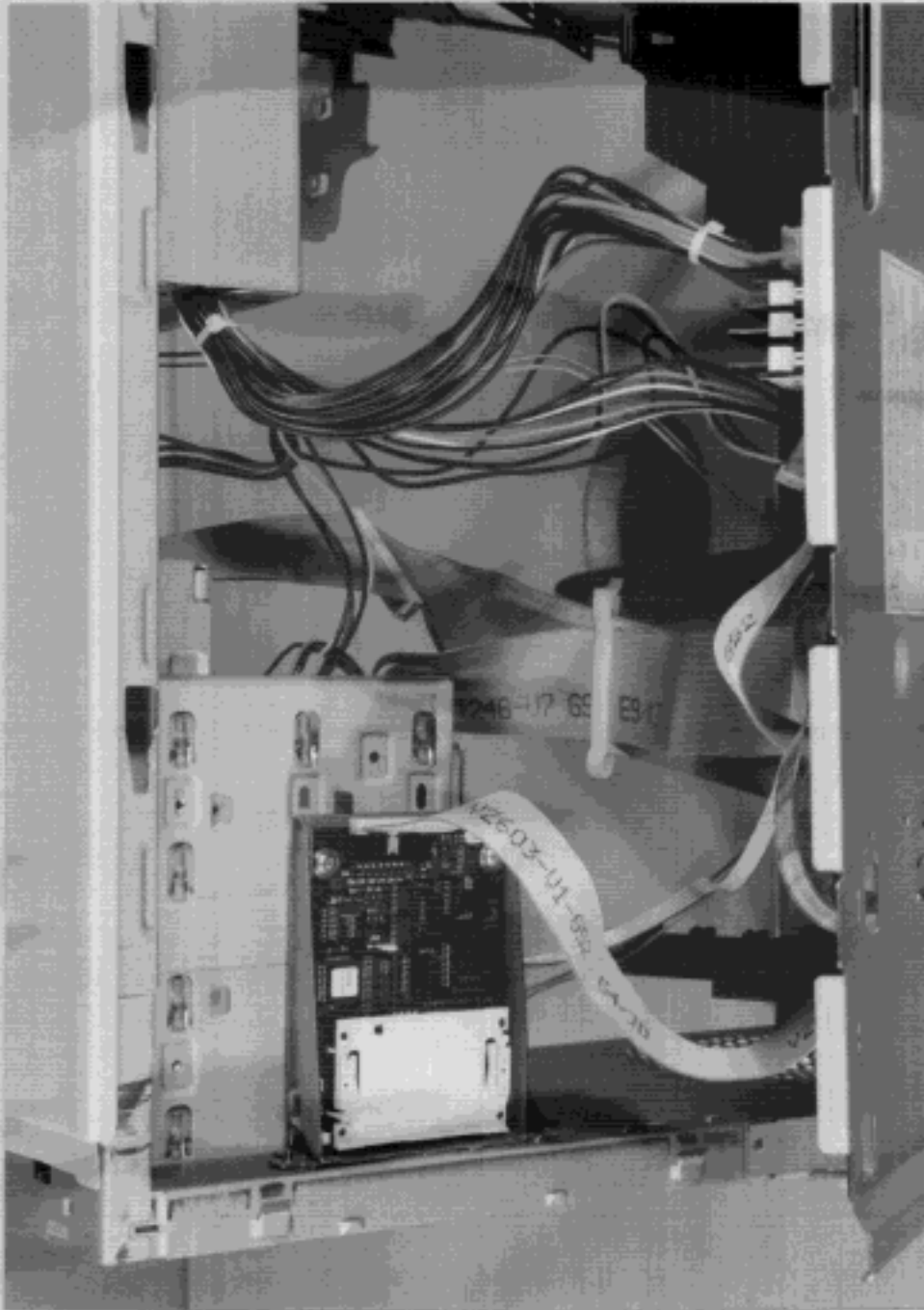
Siemens Nixdorf Informationssysteme AG
Personal Computer Scenic Pro M7

FCC Identifier:
HSSCENICM701

Date: Apr. 29, 1998

Page:
51/69

8.4 Chip card reader in system unit



SIEMENS
NIXDORF

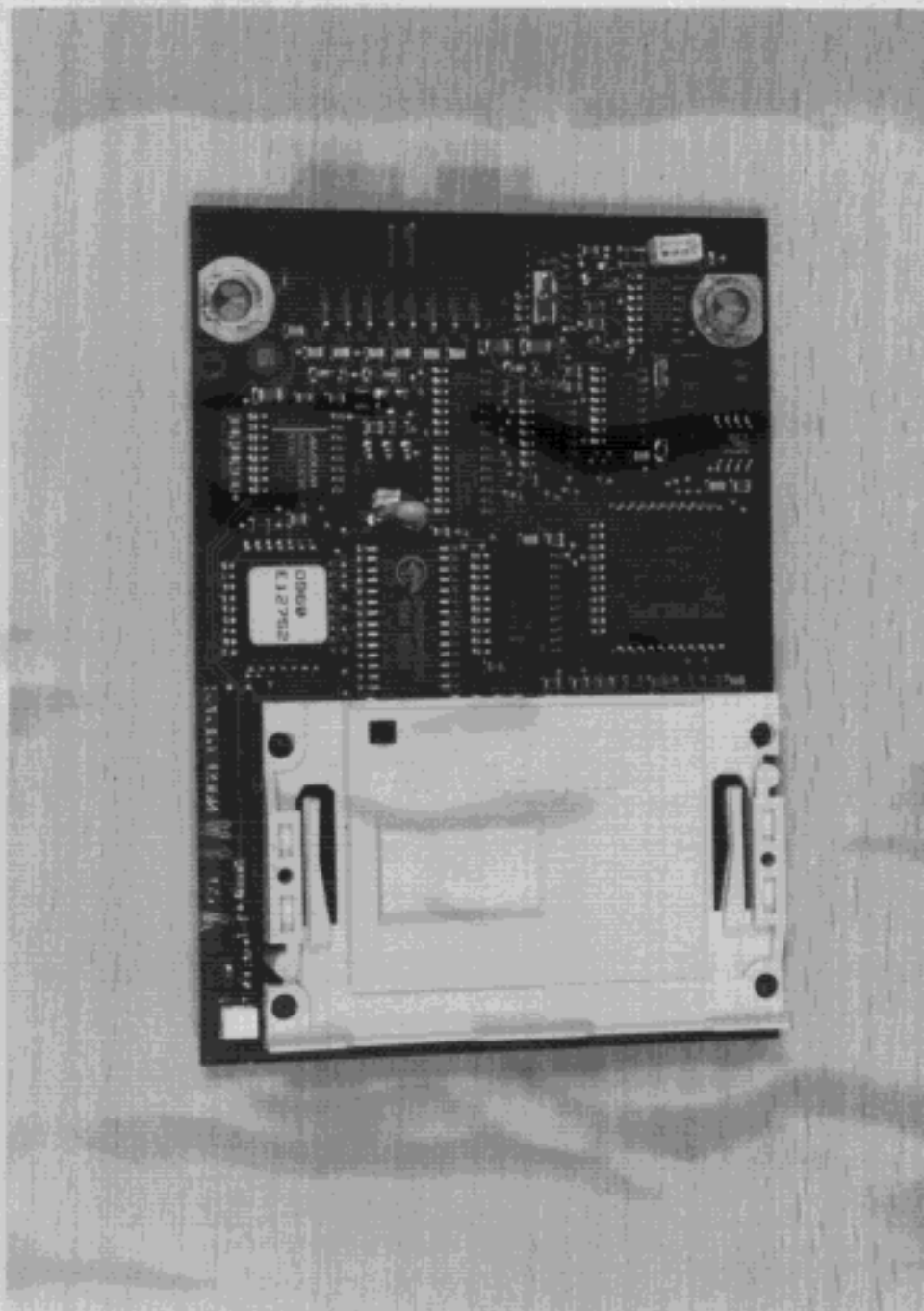
Siemens Nixdorf Informationssysteme AG
Personal Computer Scenic Pro M7

FCC Identifier:
HSSCENICM701

Date: Apr. 29, 1998

Page:
52/69

8.5 Chip card reader, front side view



SIEMENS
NIXDORF

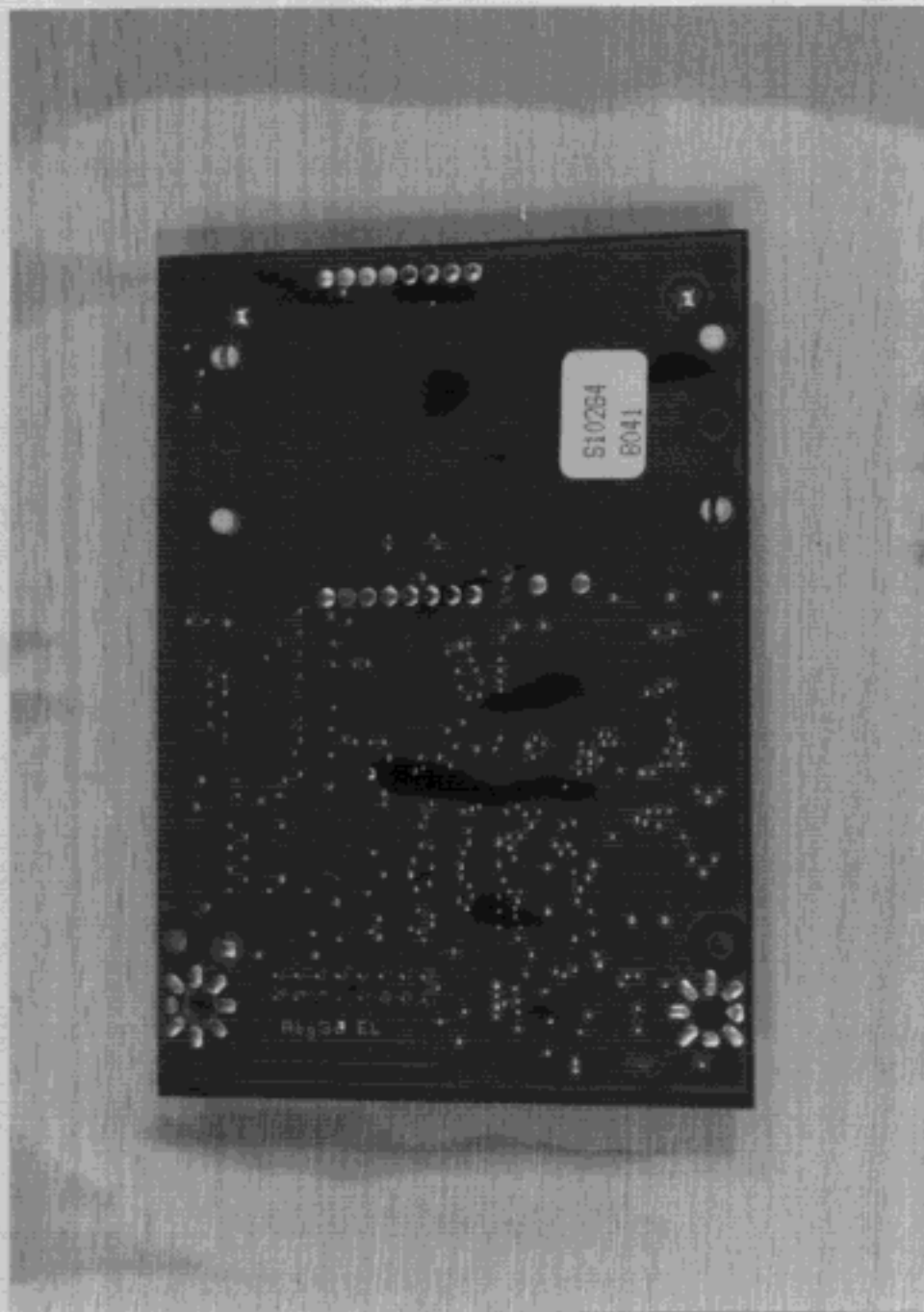
Siemens Nixdorf Informationssysteme AG
Personal Computer Scenic Pro M7

FCC Identifier:
HSSSCNICM701

Date: Apr. 29, 1998

Page:
53/69

8.6 Chip card reader, rear side view



SIEMENS
NIXDORF

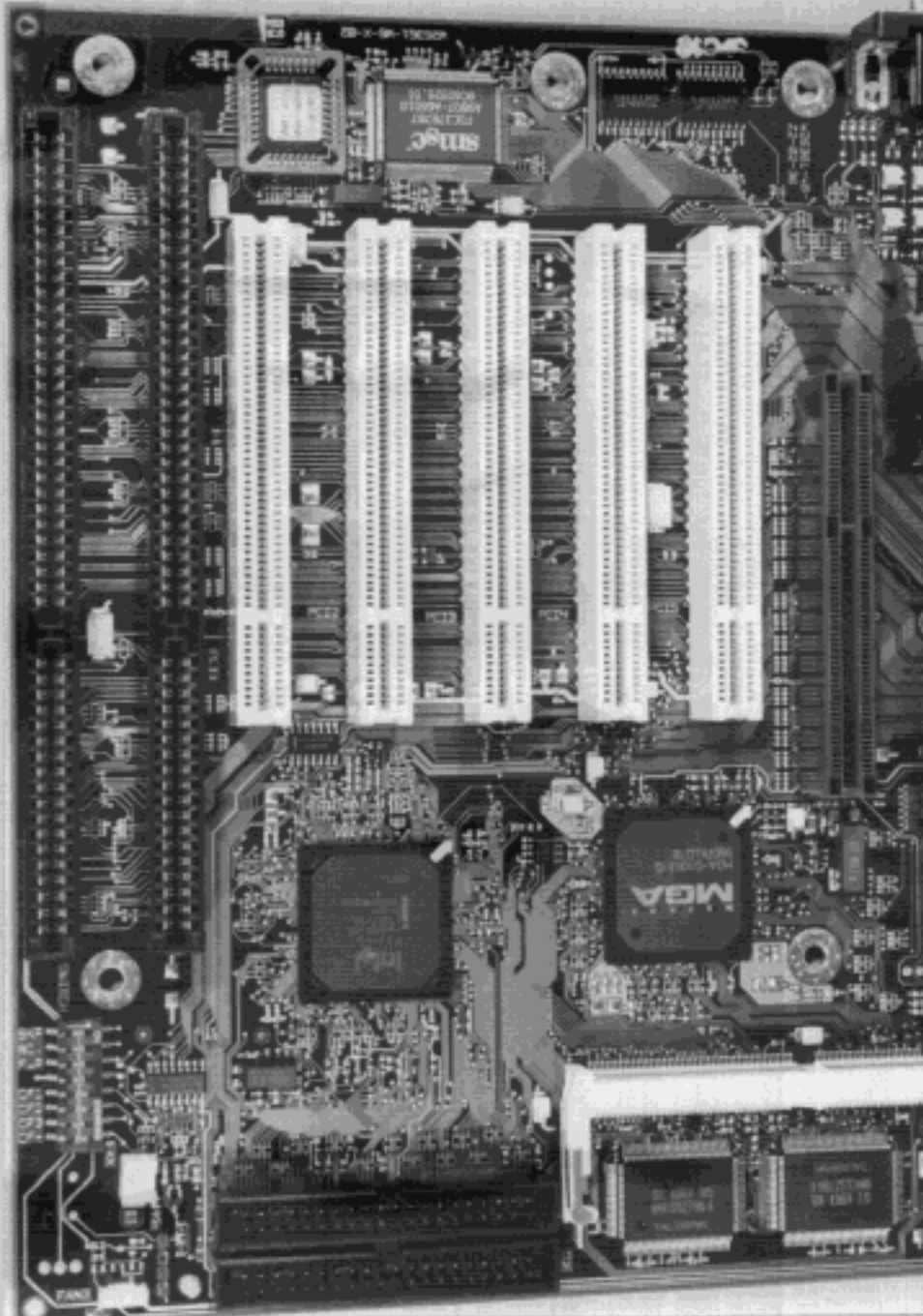
Siemens Nixdorf Informationssysteme AG
Personal Computer Scenic Pro M7

FCC Identifier:
HSSCENICM701

Date: Apr. 29, 1998

Page:
54/69

8.7 System board, front side view, part one



**SIEMENS
NIXDORF**

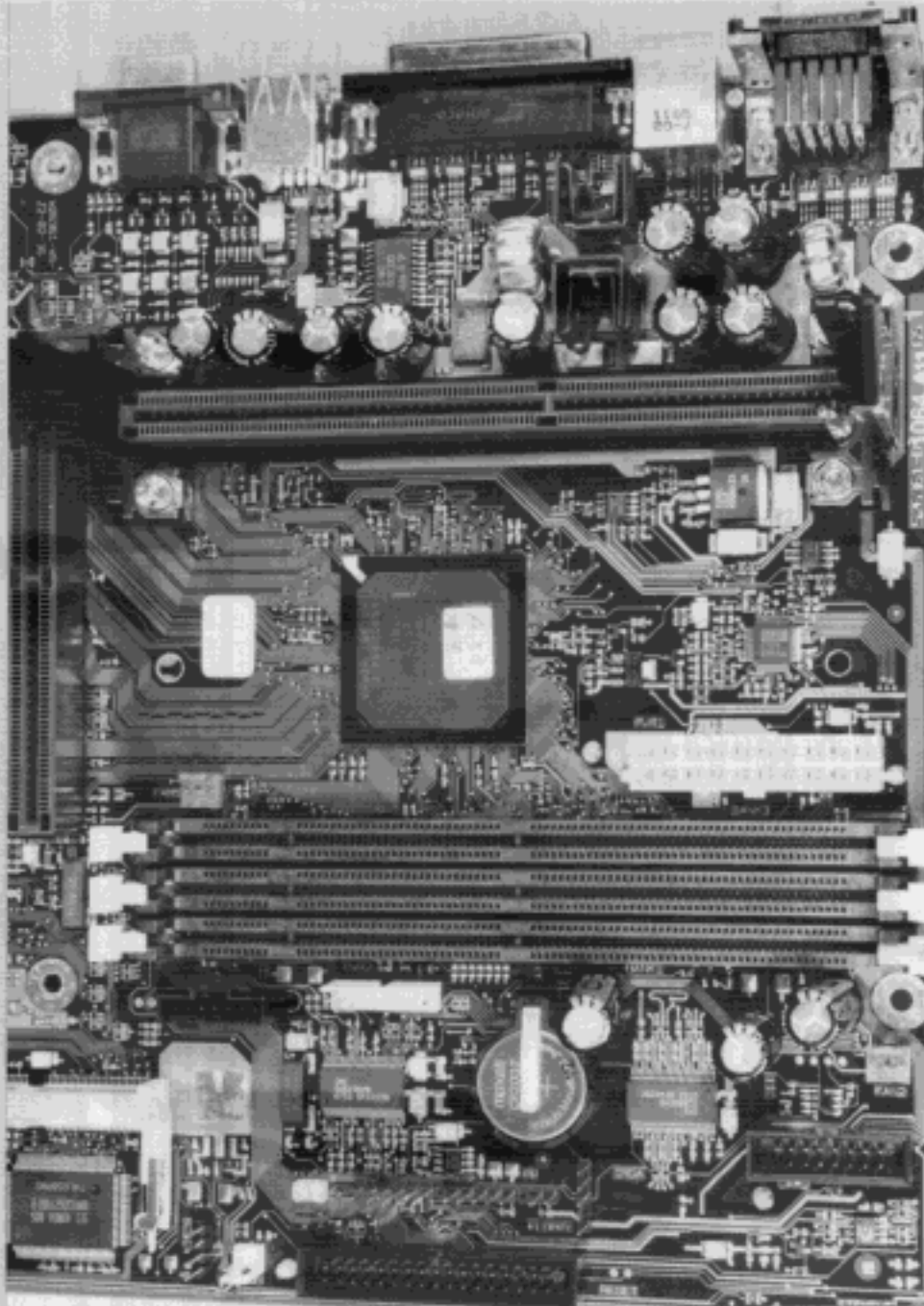
Siemens Nixdorf Informationssysteme AG
Personal Computer Scenic Pro M7

FCC Identifier:
HSSCENICM701

Date: Apr. 29, 1998

Page:
55/69

8.8 System board, front side view, part two



SIEMENS
NIXDORF

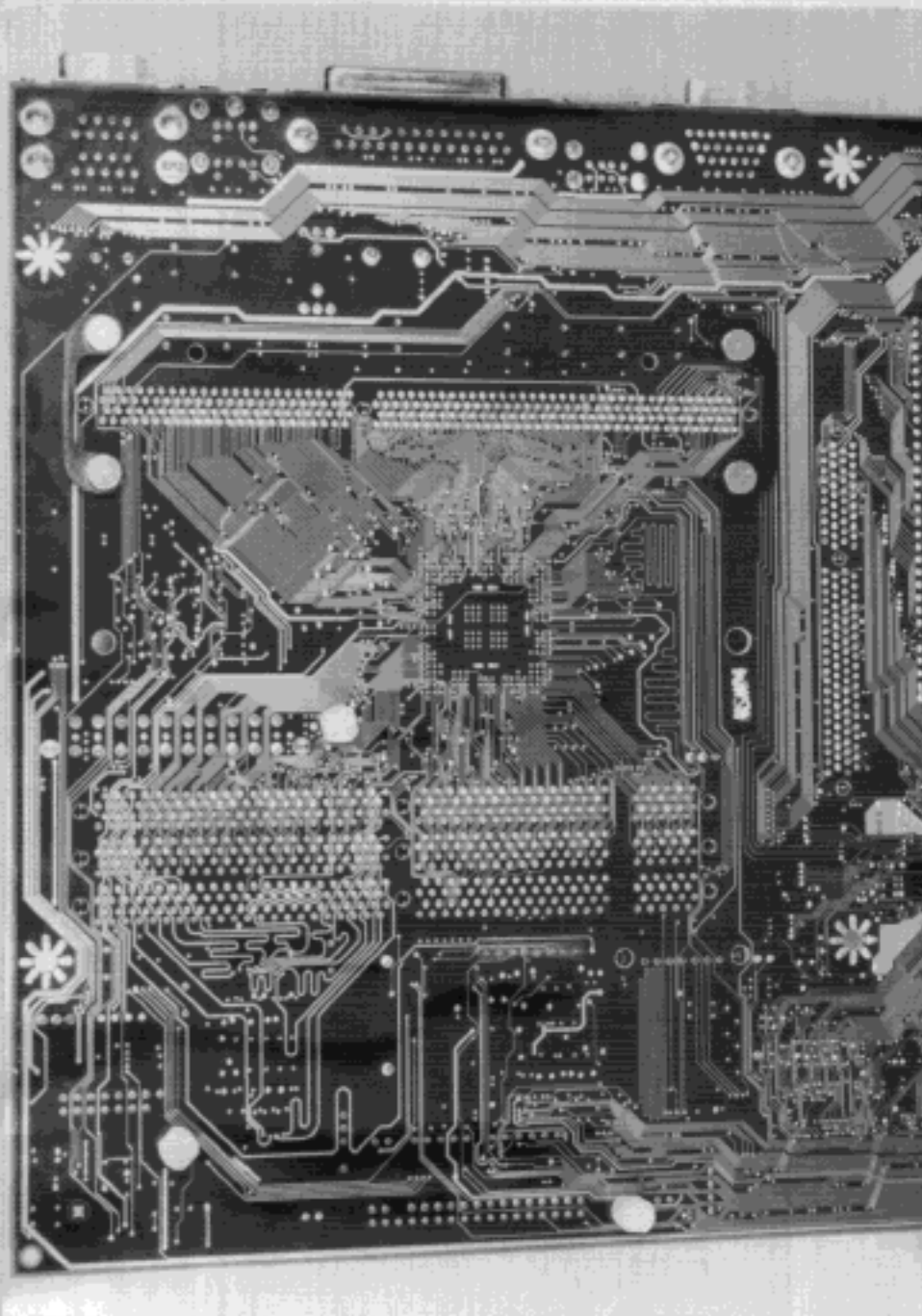
Siemens Nixdorf Informationssysteme AG
Personal Computer Scenic Pro M7

FCC Identifier:
HSSSCENICM701

Date: Apr. 29, 1998

Page:
56/69

8.9 System board, rear side view, part one



SIEMENS
NIXDORF

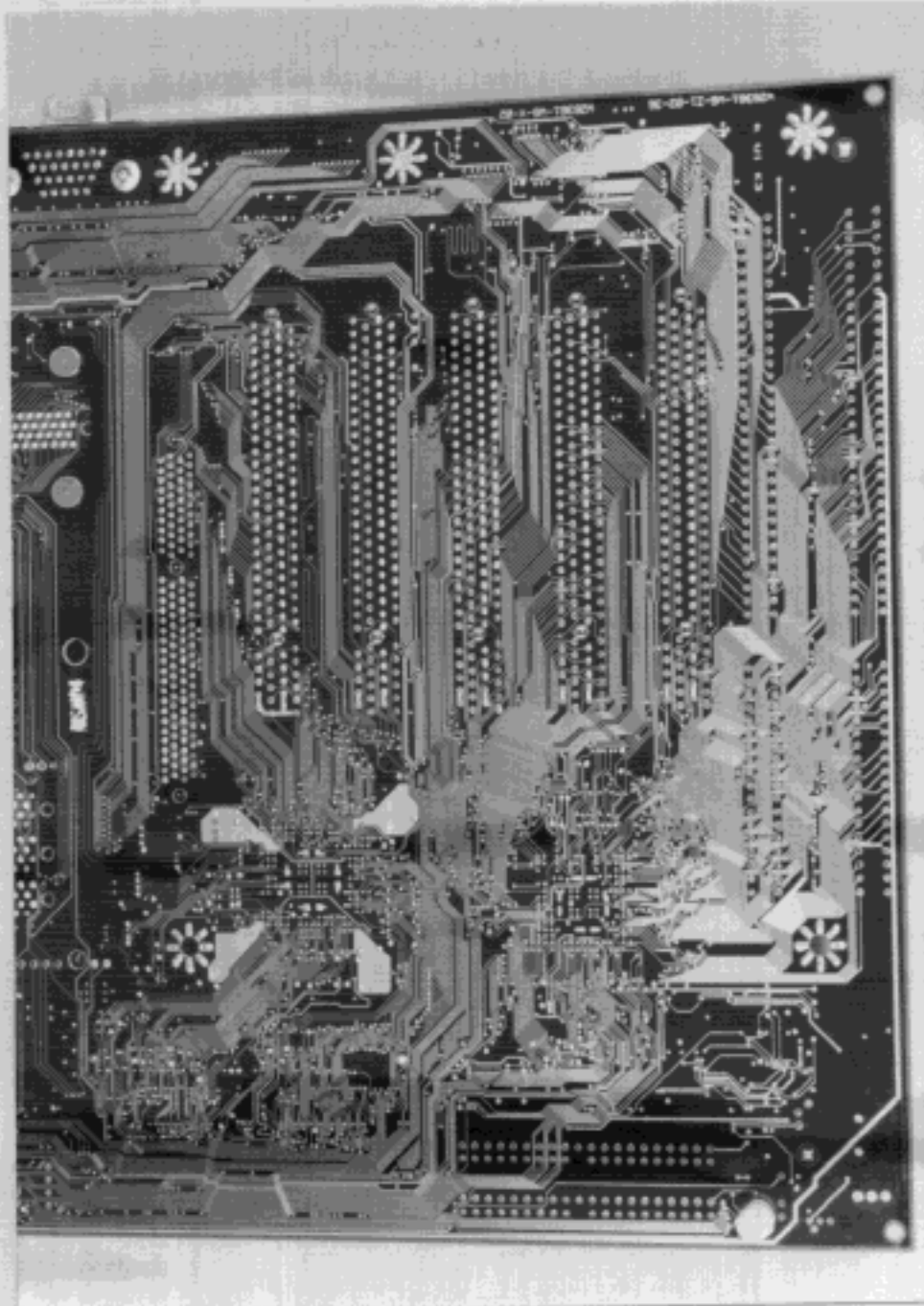
Siemens Nixdorf Informationssysteme AG
Personal Computer Scenic Pro M7

FCC Identifier:
HSSSCNICM701

Date: Apr. 29, 1998

Page:
57/69

8.10 System board, rear side view, part two



SIEMENS
NIXDORF

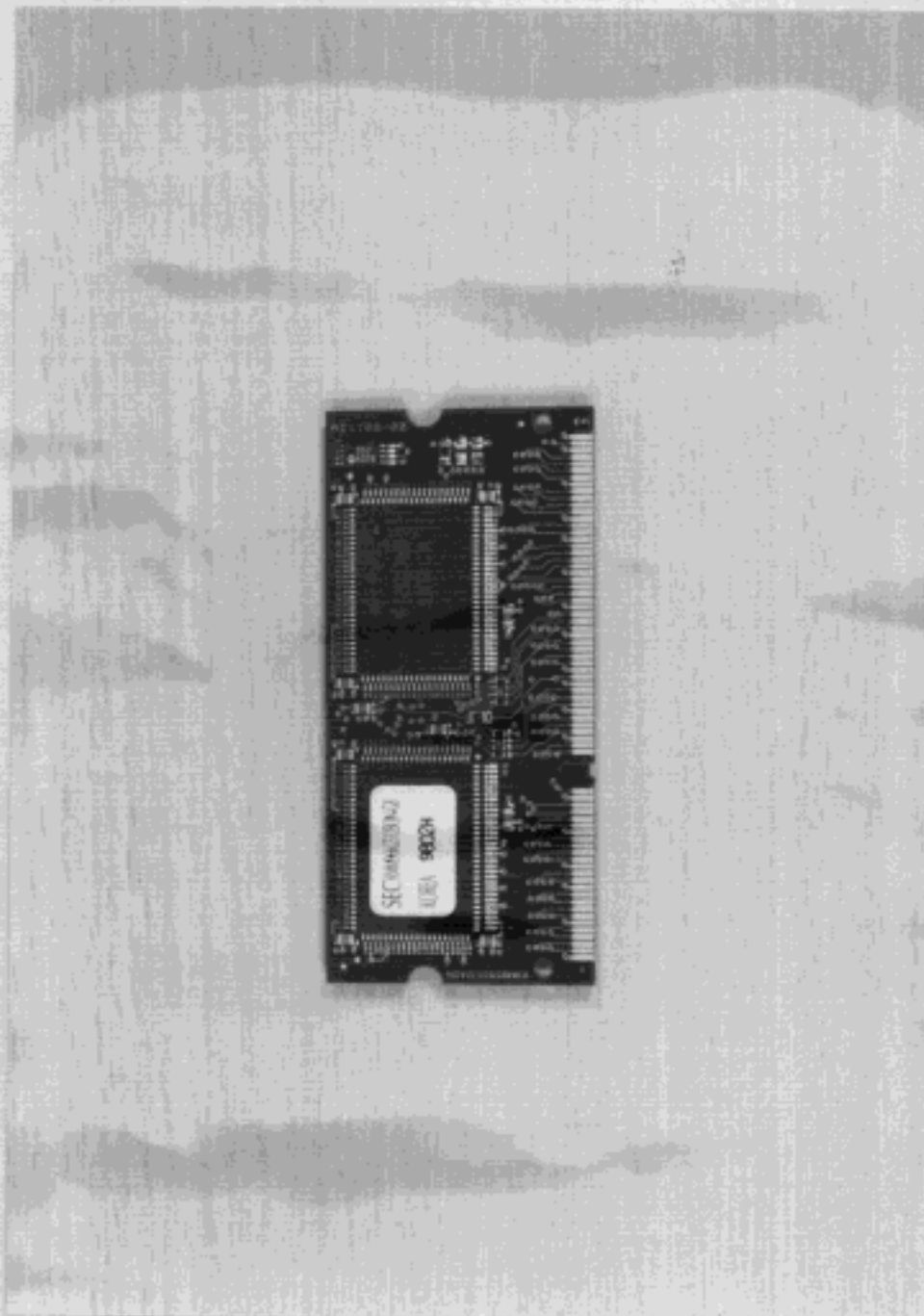
Siemens Nixdorf Informationssysteme AG
Personal Computer Scenic Pro M7

FCC Identifier:
HSSCENICM701

Date: Apr. 29, 1998

Page:
58/69

8.11 Video RAM, front side view



SIEMENS
NIXDORF

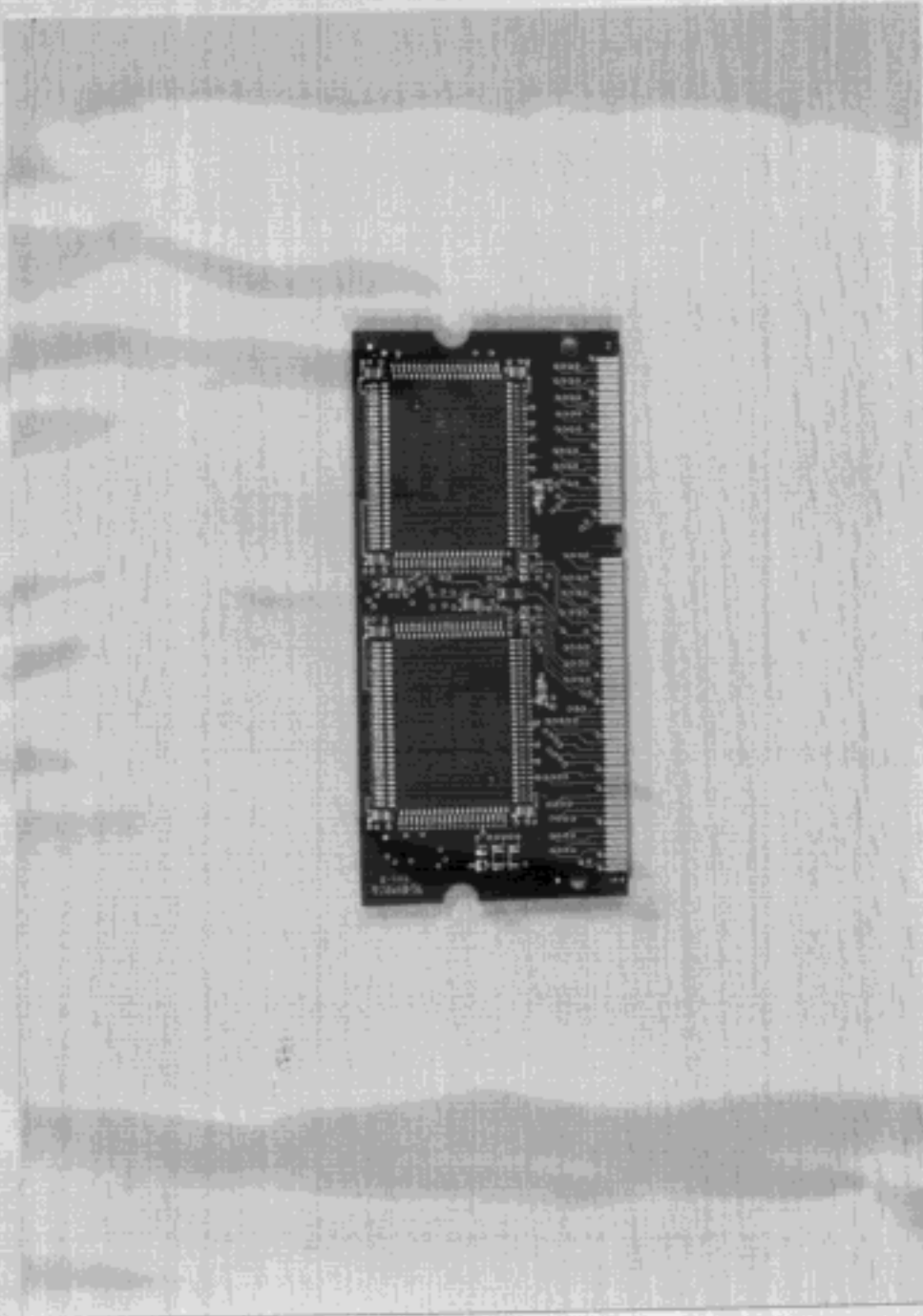
Siemens Nixdorf Informationssysteme AG
Personal Computer Scenic Pro M7

FCC Identifier:
HSSCENICM701

Date: Apr. 29, 1998

Page:
59/69

8.12 Video RAM, rear side view



SIEMENS
NIXDORF

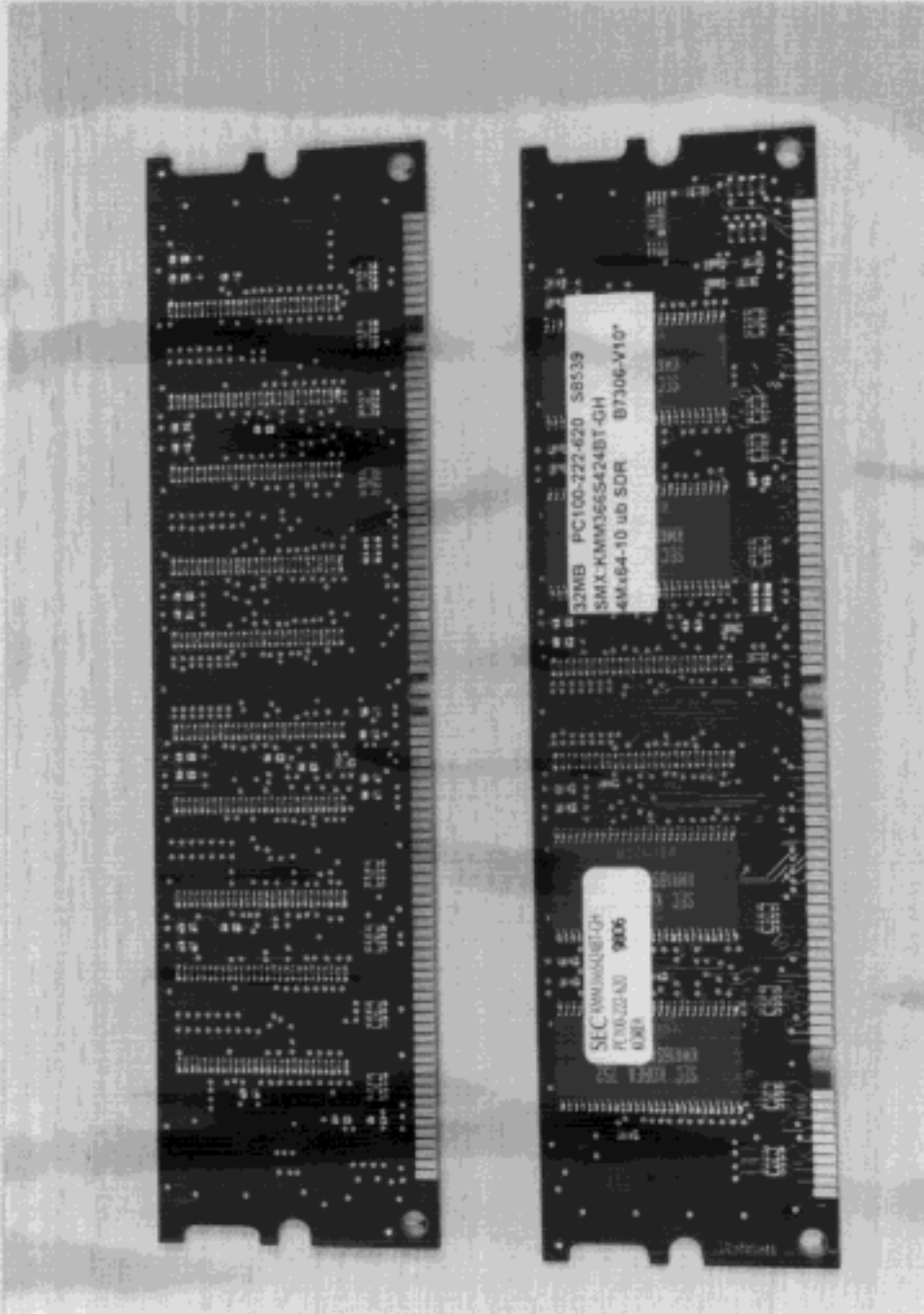
Siemens Nixdorf Informationssysteme AG
Personal Computer Scenic Pro M7

FCC Identifier:
HSSCENICM701

Date: Apr. 29, 1998

Page:
60/69

8.13 RAM module, front and rear side view



SIEMENS
NIXDORF

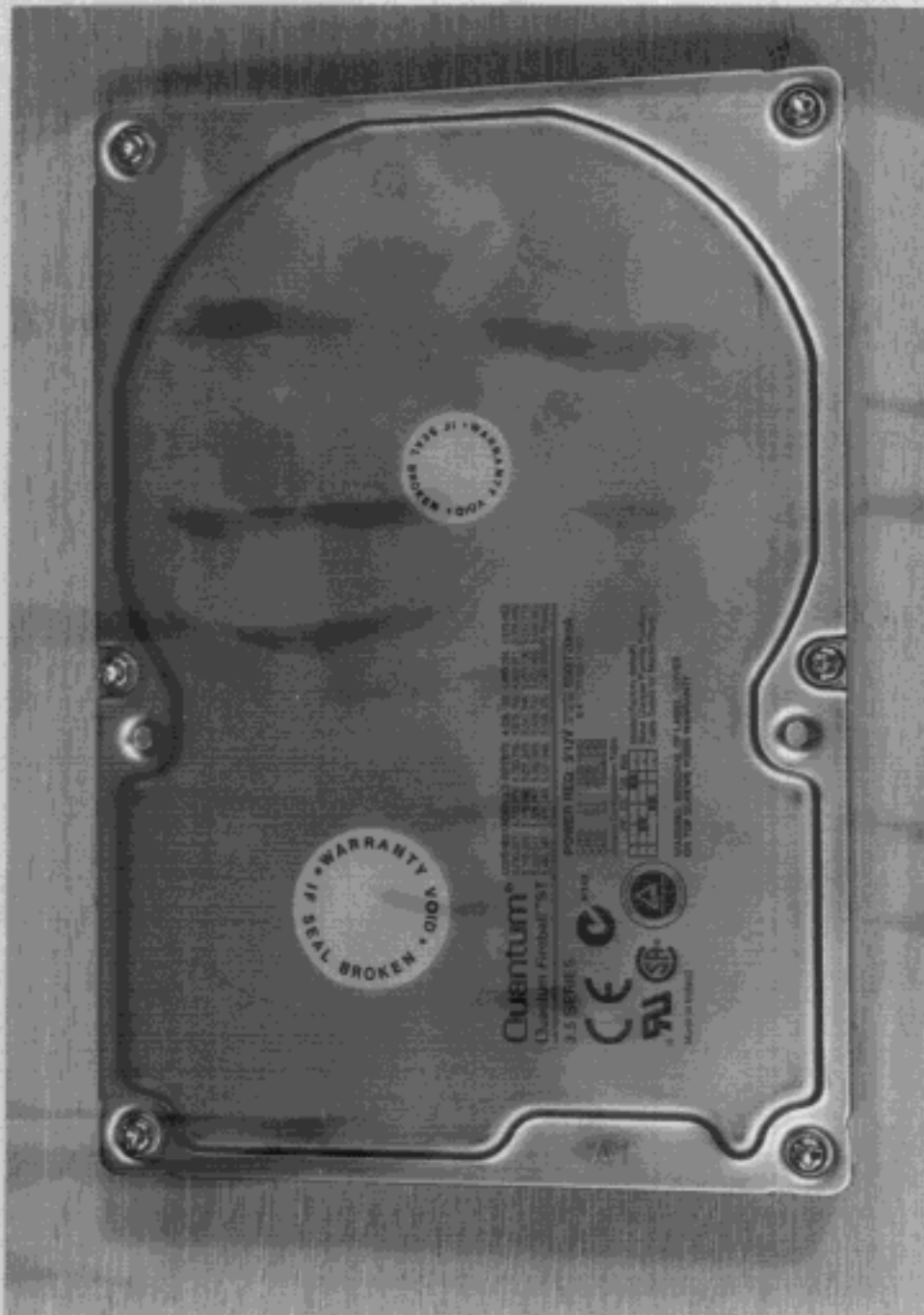
Siemens Nixdorf Informationssysteme AG
Personal Computer Scenic Pro M7

FCC Identifier:
HSSSCENICM701

Date: Apr. 29, 1998

Page:
61/69

8.14 Hard disk drive, top side view



**SIEMENS
NIXDORF**

Siemens Nixdorf Informationssysteme AG
Personal Computer Scenic Pro M7

FCC Identifier:
HSSCENICM701

Date: Apr. 29, 1998

Page:
62/69

8.15 Floppy disk drive, side view



SIEMENS
NIXDORF

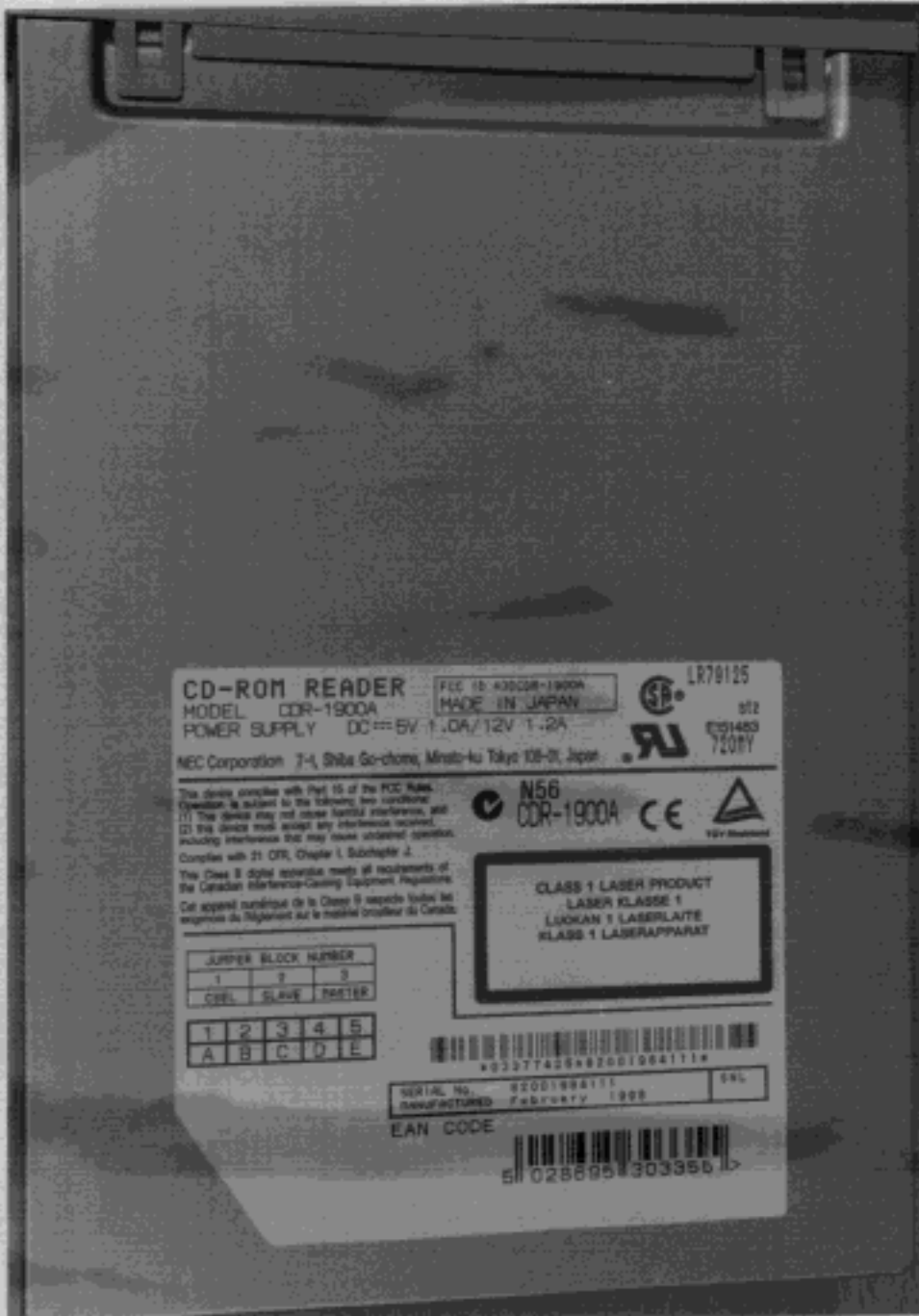
Siemens Nixdorf Informationssysteme AG
Personal Computer Scenic Pro M7

FCC Identifier:
HSSCENICM701

Date: Apr. 29, 1998

Page:
63/69

8.16 CD-ROM drive, top side view



**SIEMENS
 NIXDORF**

Siemens Nixdorf Informationssysteme AG
 Personal Computer Scenic Pro M7

FCC Identifier:
 HSSSCENICM701

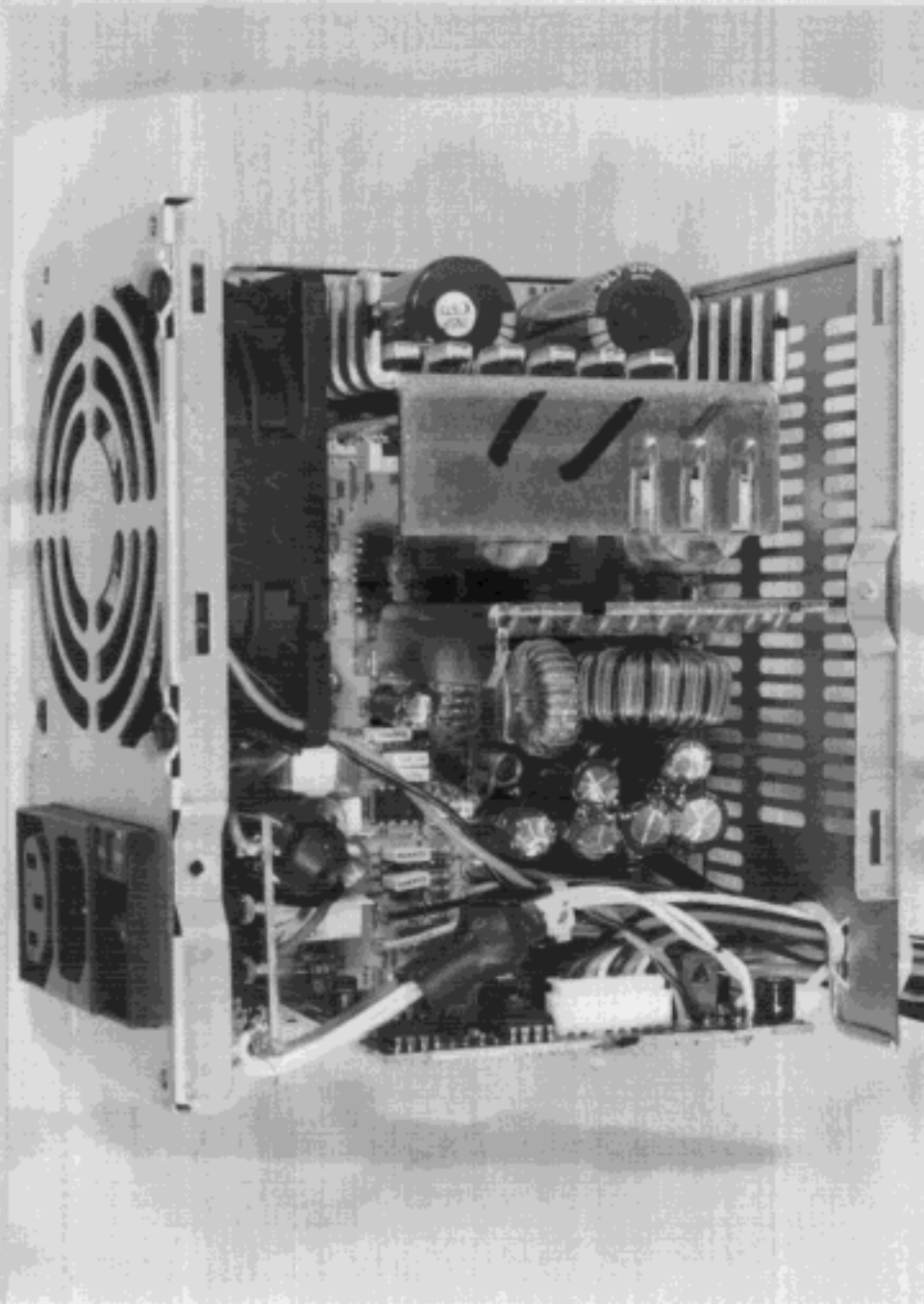
Date: Apr. 29, 1996

Page:
 64/69

8.17 Power supply ASTEC, closed case, top side view



8.18 Power supply ASTEC, opened case, inside view



**SIEMENS
NIXDORF**

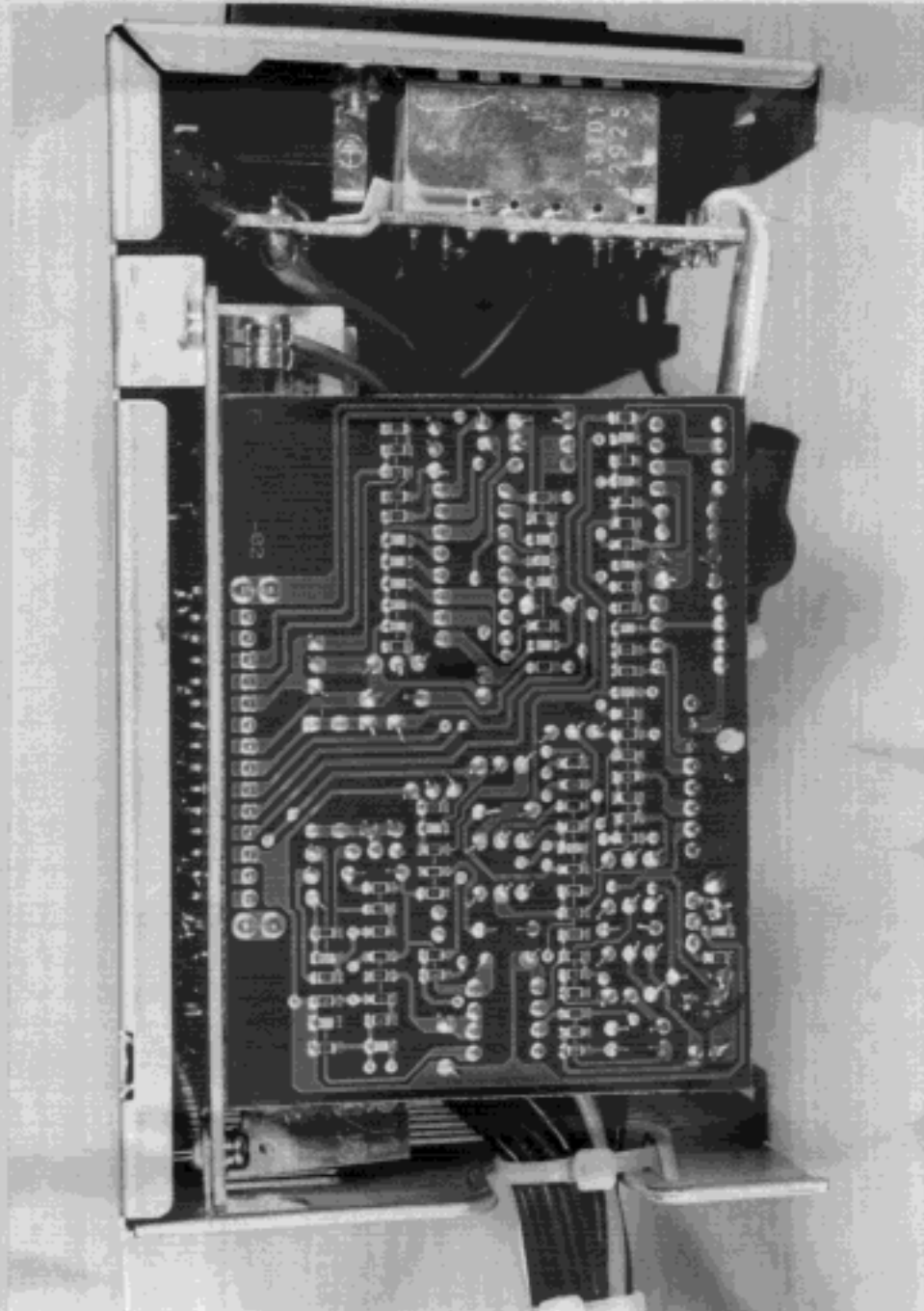
Siemens Nixdorf Informationssysteme AG
Personal Computer Scenic Pro M7

FCC Identifier:
HSSSCENICM701

Date: Apr. 29, 1988

Page:
66/69

8.19 Power supply ASTEC, regulator board, rear side view



**SIEMENS
NIXDORF**

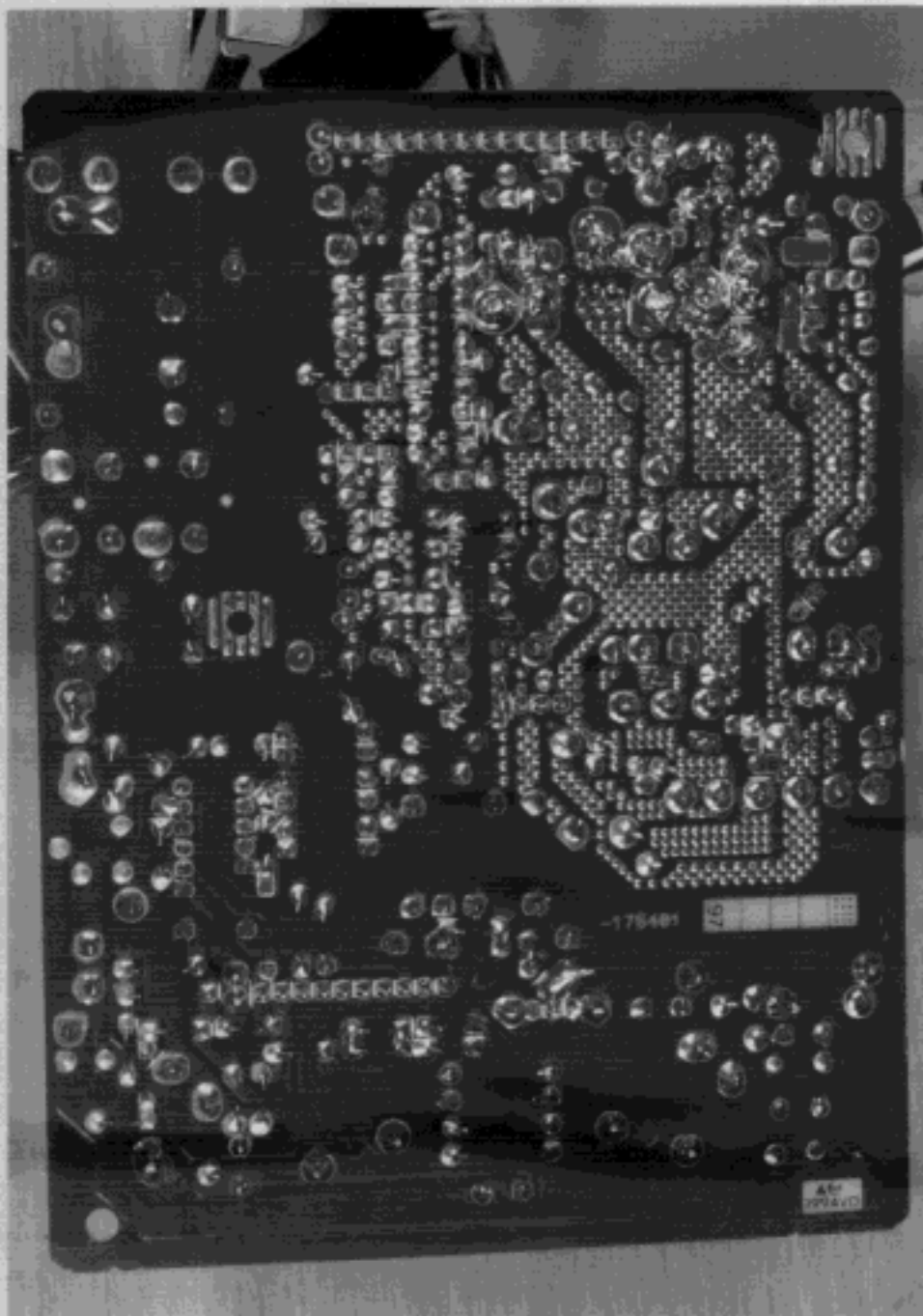
Siemens Nixdorf Informationssysteme AG
Personal Computer Scenic Pro M7

FCC Identifier:
HSSSCENICM701

Date: Apr. 29, 1998

Page:
67/69

8.20 Power supply ASTEC, rear side view



**SIEMENS
NIXDORF**

Siemens Nixdorf Informationssysteme AG
Personal Computer Scenic Pro M7

FCC Identifier:
HSSCENICM701

Date: Apr. 29, 1998

Page:
68/69