

### 8.3 Opened case, inside view of EUT



**SIEMENS**  
**NIXDORF**

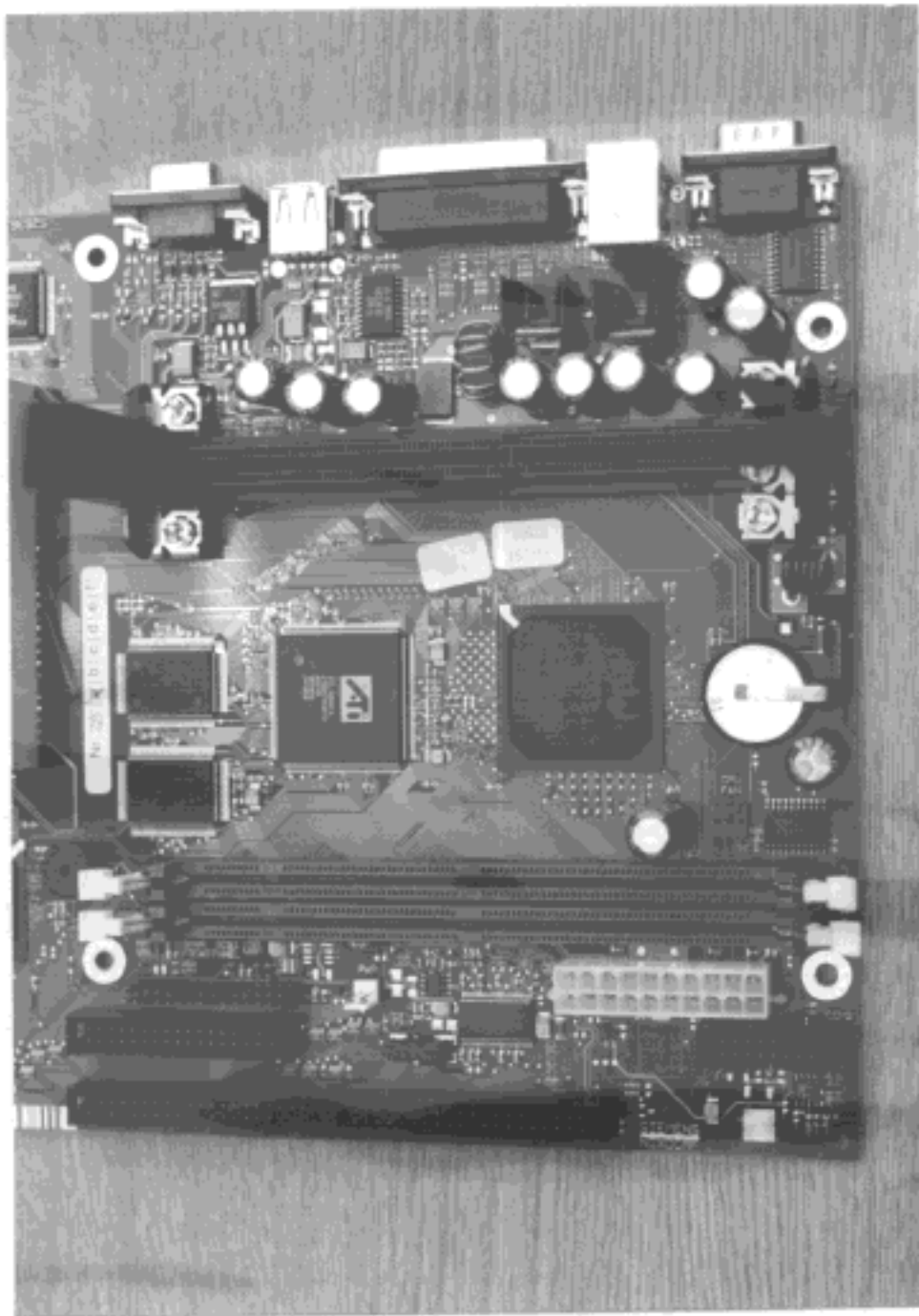
Siemens Nixdorf Informationssysteme AG  
Personal Computer Scenic Edition Mi6

FCC Identifier:  
HSSCENICM604

Date: Aug 28, 1998

Page:  
49/62

8.4 System board, front side view, part one



**SIEMENS**  
**NIXDORF**

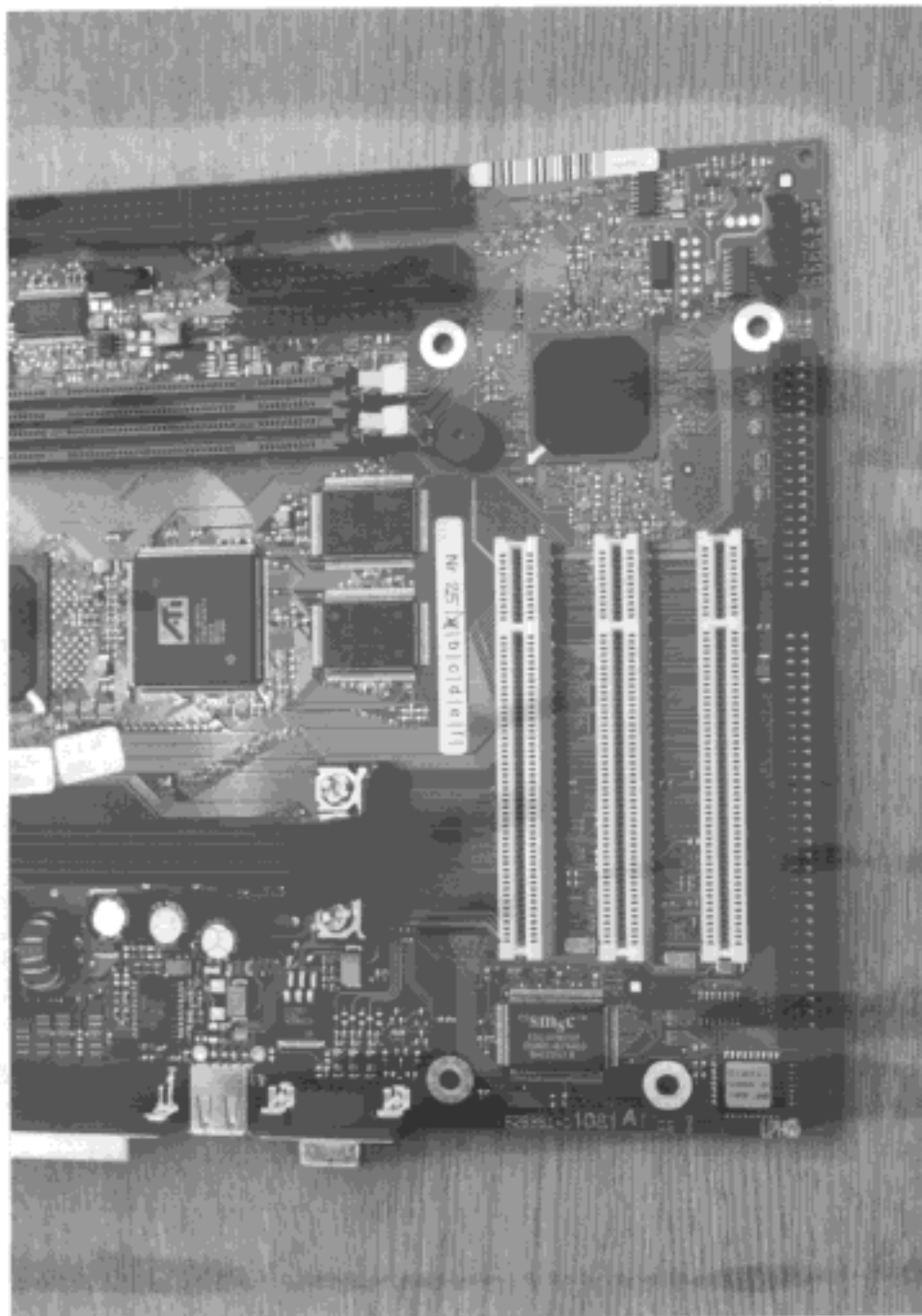
Siemens Nixdorf Informationssysteme AG  
Personal Computer Scenic Edition Mi6

FCC Identifier:  
HSSSCENICM604

Date: Aug 28, 1998

Page:  
50/62

8.5 System board, front side view, part two



**SIEMENS**  
**NIXDORF**

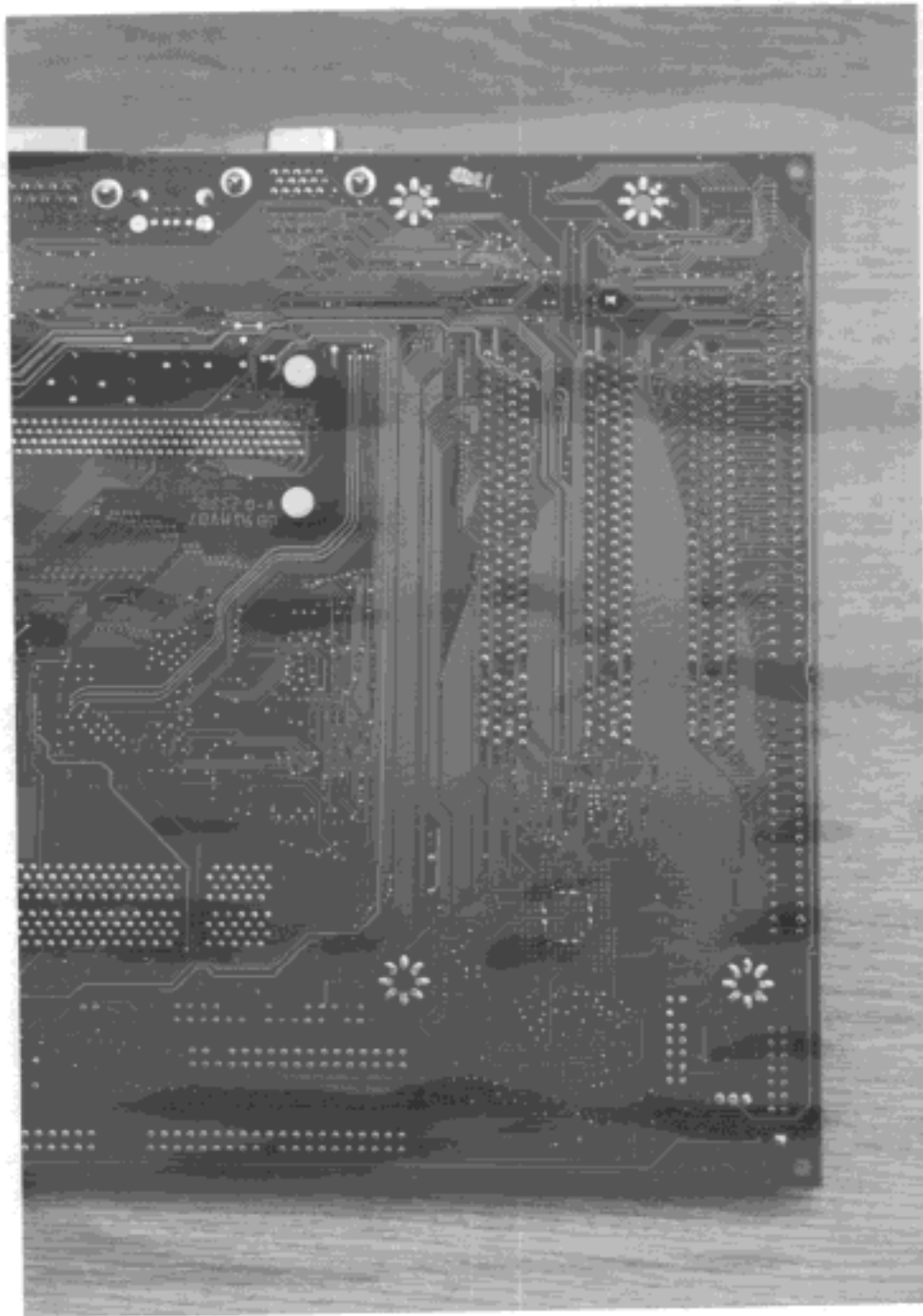
Siemens Nixdorf Informationssysteme AG  
Personal Computer Scenic Edition Mi6

FCC Identifier:  
U333CEN1M604

Date: Aug 28, 1998

Page:  
51/62

8.6 System board, rear side view, part one



**SIEMENS**  
**NIXDORF**

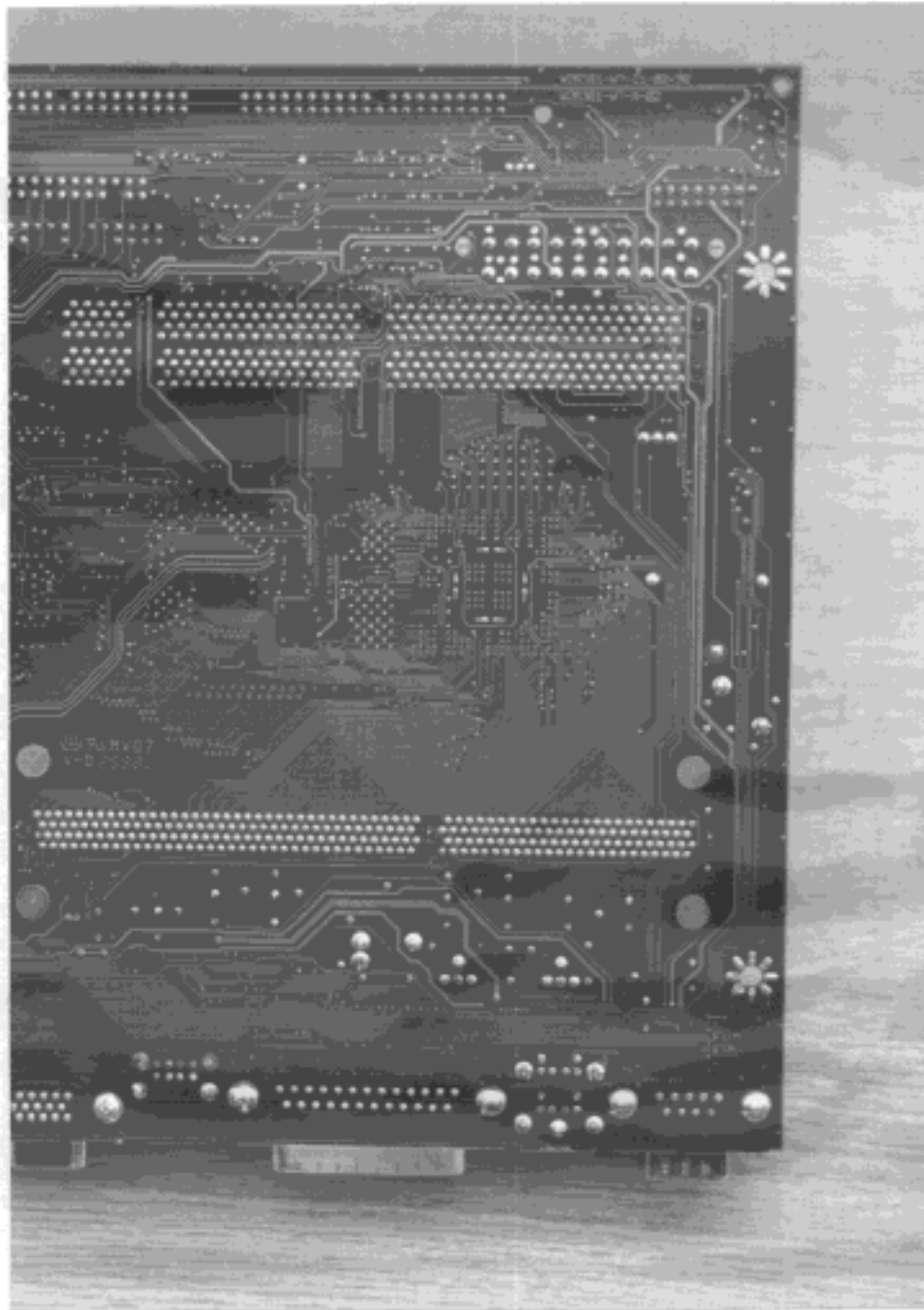
Siemens Nixdorf Informationssysteme AG  
Personal Computer Scenic Edition Mi6

FCC Identifier:  
HSSCENICM604

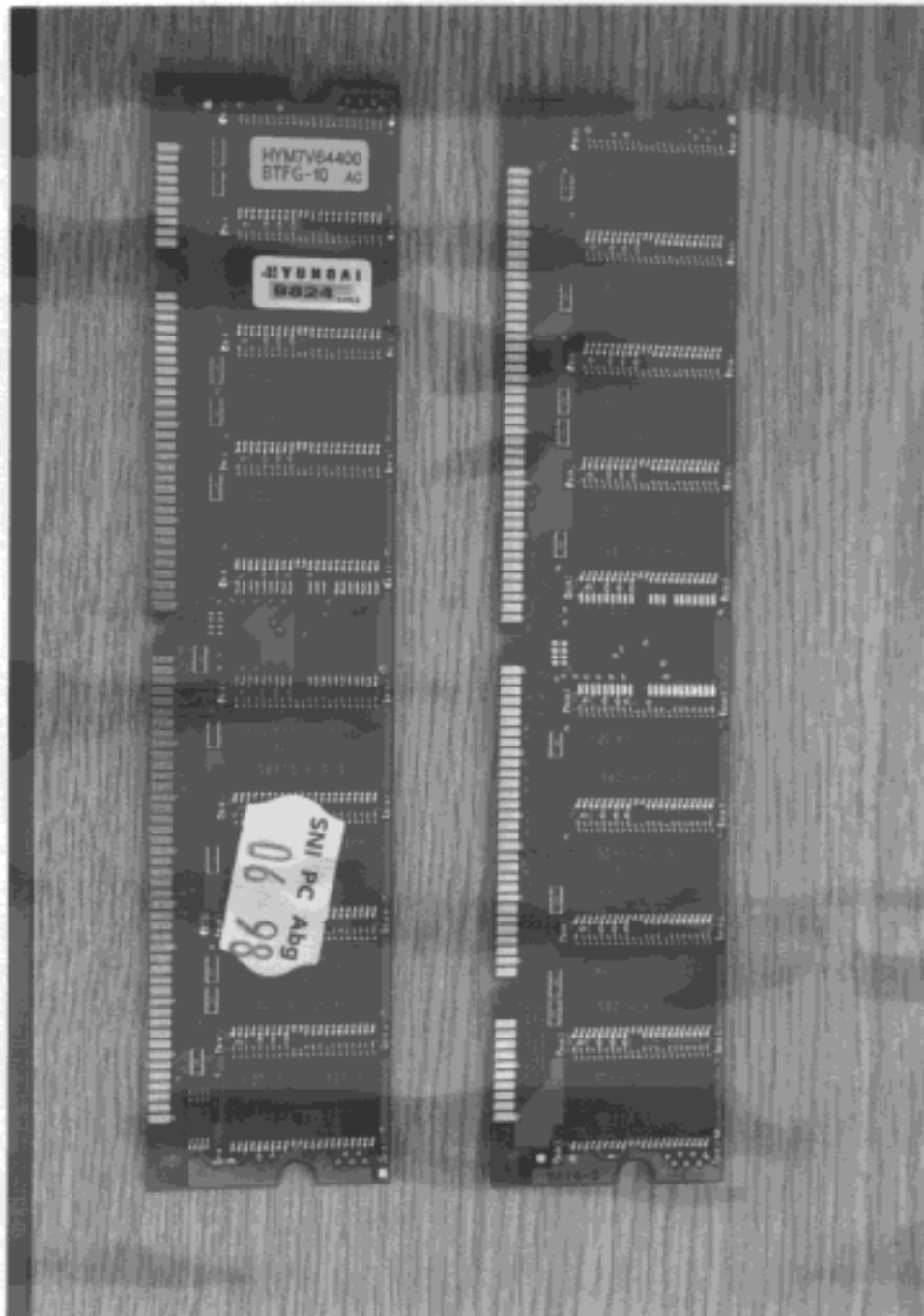
Date: Aug 28, 1998

Page:  
52/62

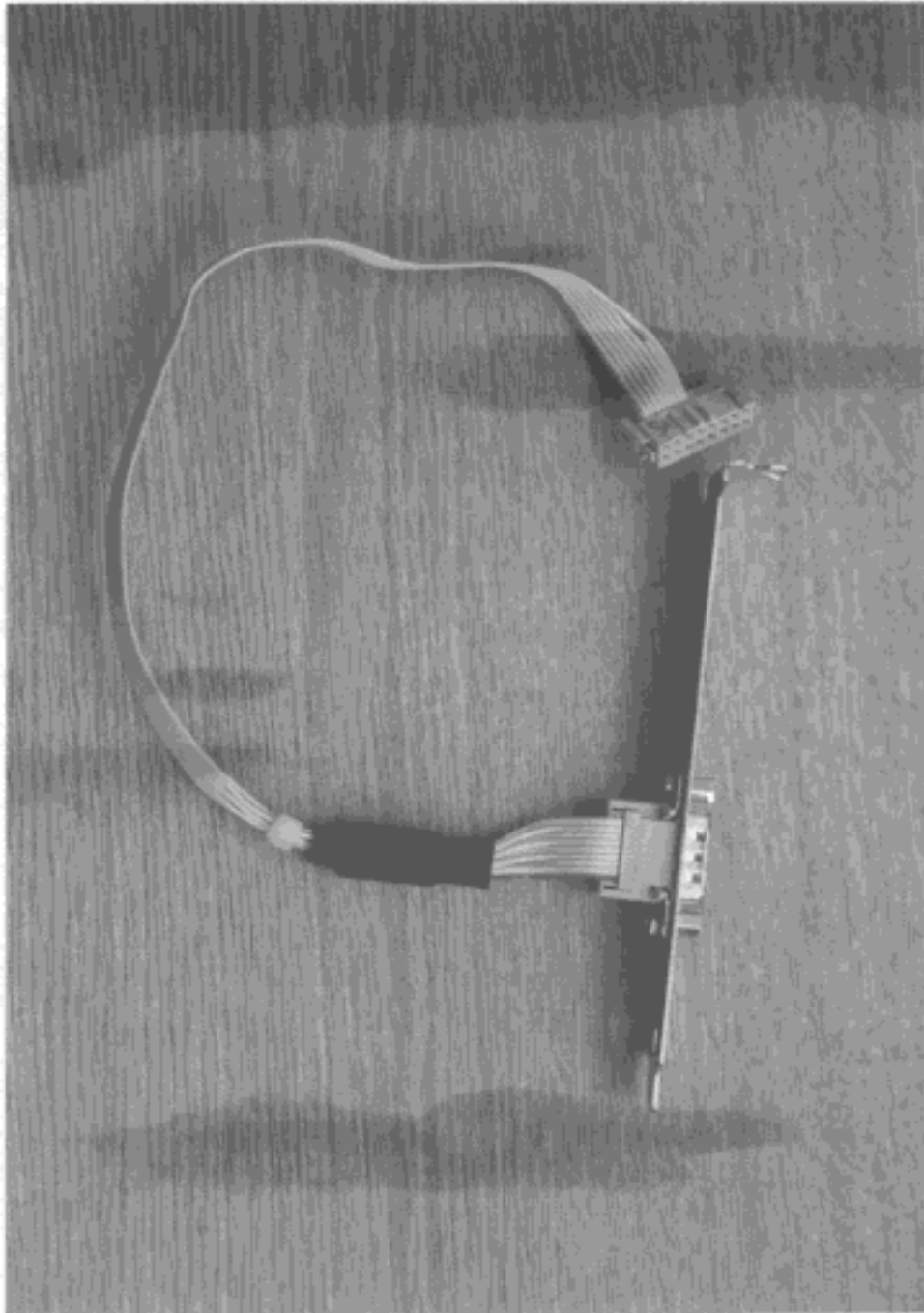
8.7 System board, rear side view, part two



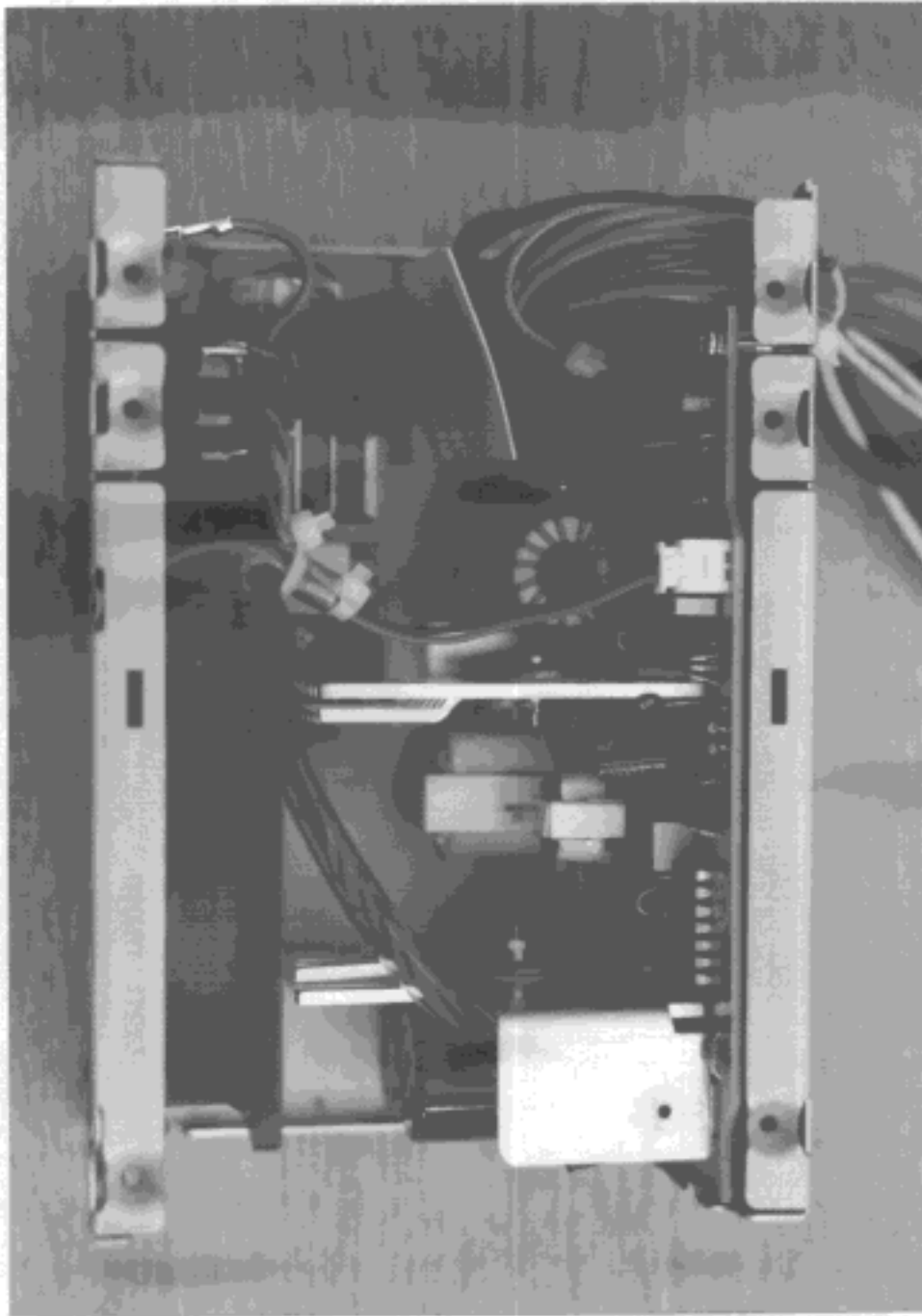
8.8 SDRAM module, front side and rear side view



8.9 Additional slot with serial interface



8.11 Power supply ASTEC, opened case, inside view



**SIEMENS**  
**NIXDORF**

Siemens Nixdorf Informationssysteme AG  
Personal Computer Scenic Edition MI6

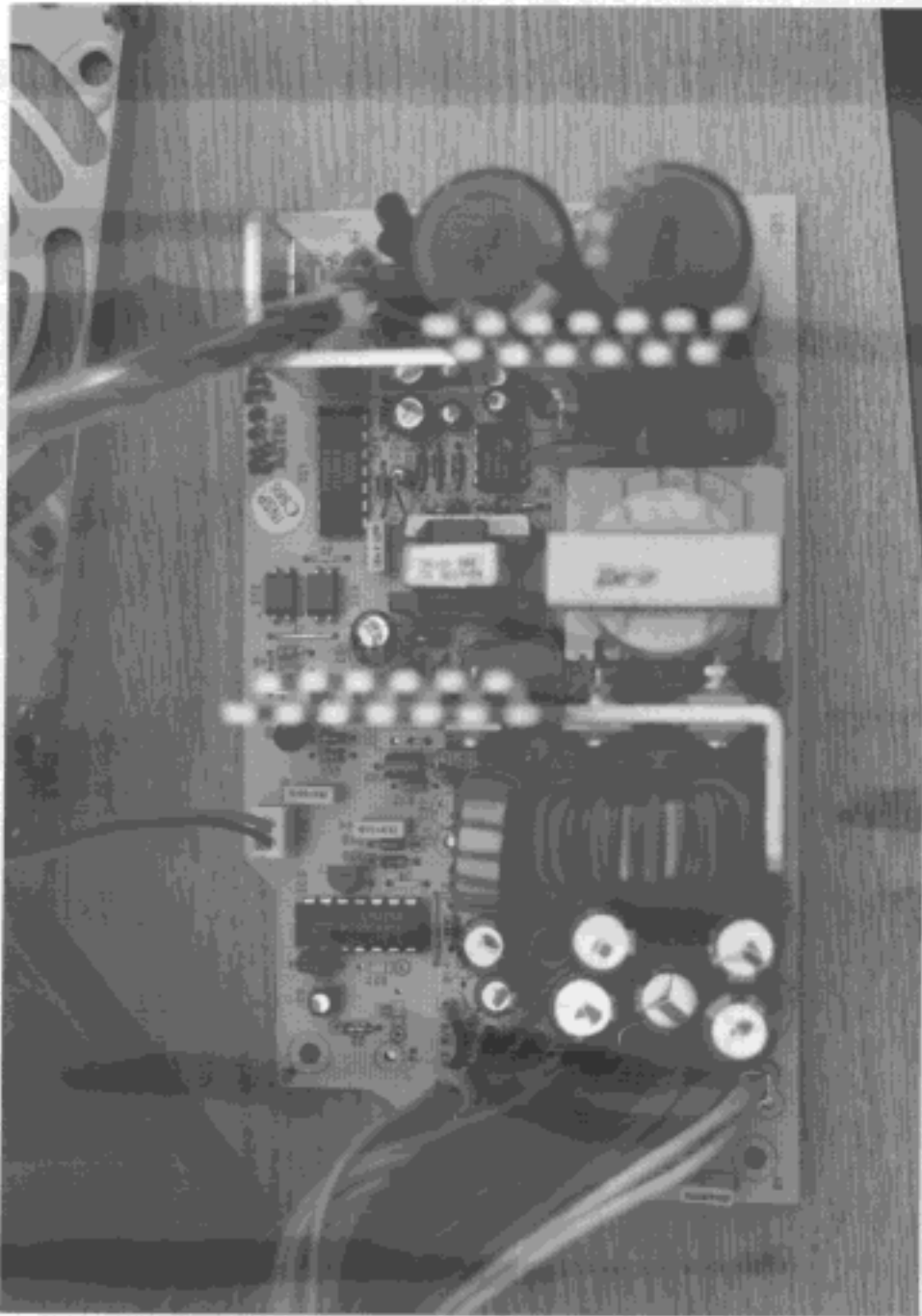
FCC Identifier:  
H55SCENICM604

Date: Aug 28, 1998

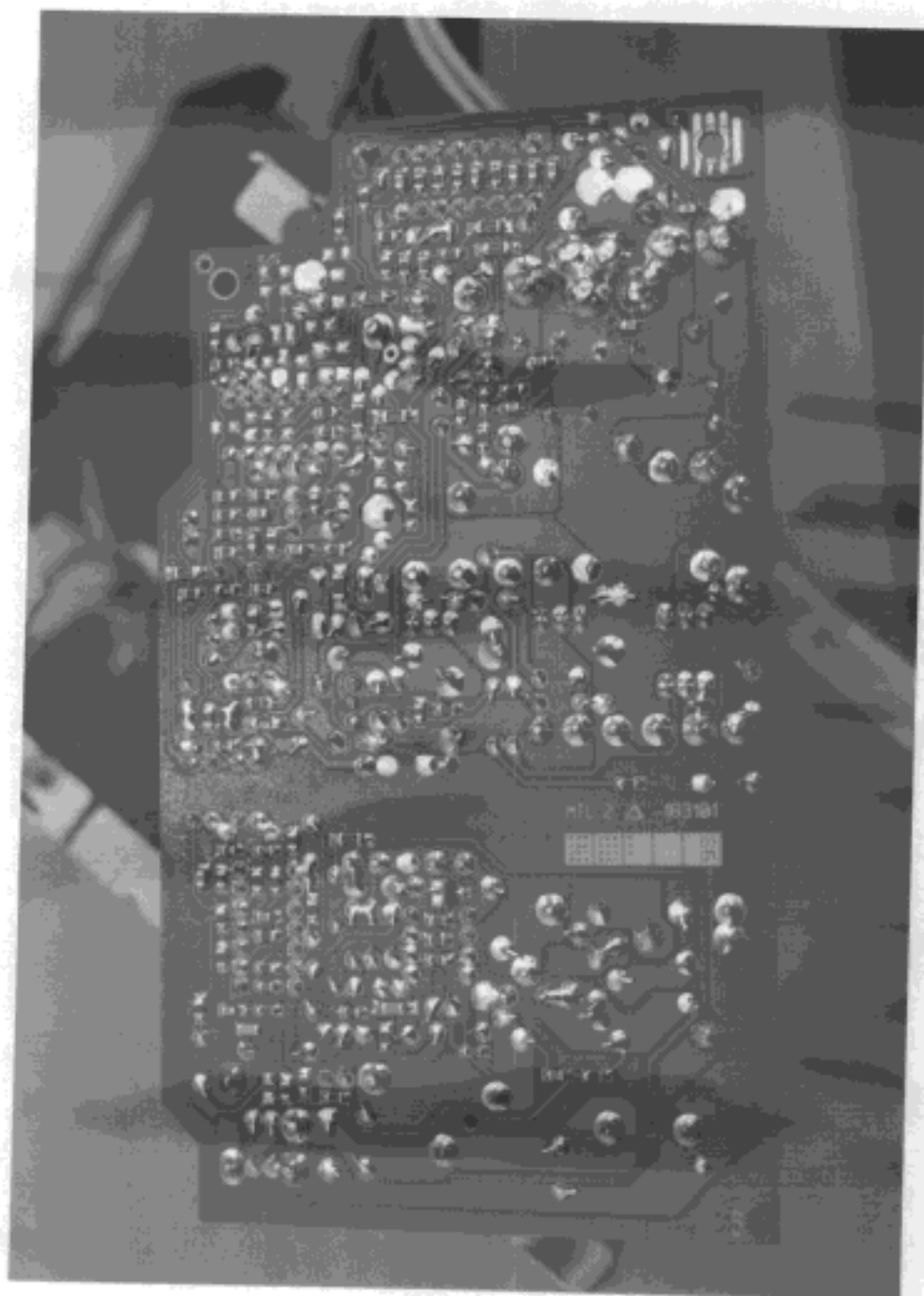
Page:  
57/62



8.12 Power supply ASTEC, regulator board, front side view



8.13 Power supply ASTEC, regulator board, rear side view



8.14 Primery board, front side view



**SIEMENS**  
**NIXDORF**

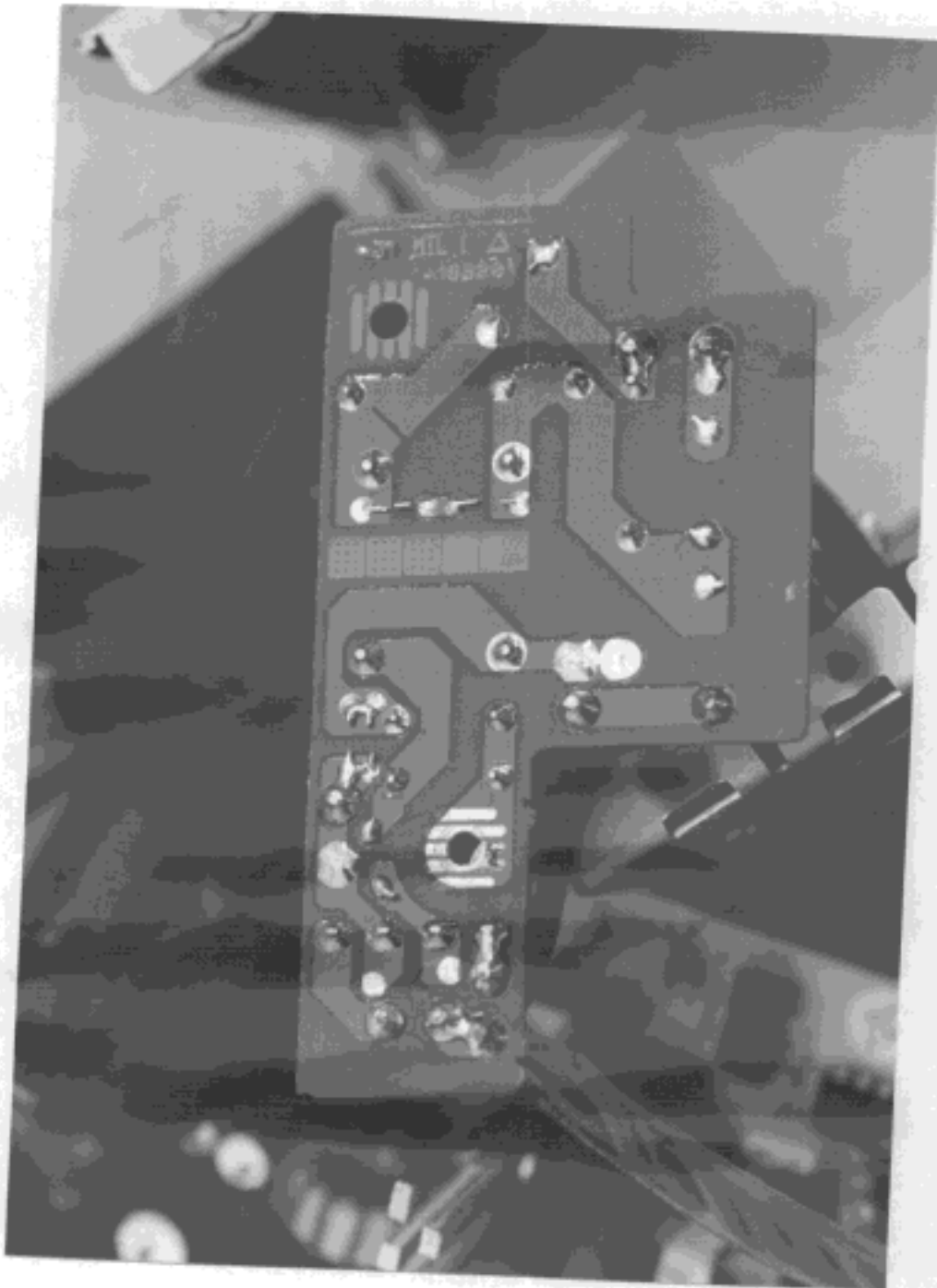
Siemens Nixdorf Informationssysteme AG  
Personal Computer Scenic Edition Mi6

FCC Identifier:  
HSSCENI0001

Date: Aug 28, 1998

Page:  
60/62

8.15 Primary board, rear side view



**SIEMENS**  
**NIXDORF**

Siemens Nixdorf Informationssysteme AG  
Personal Computer Scenic Edition M16

FCC Identifier:  
HSSCENICM04

Date: Aug 28, 1998

Page:  
61/62