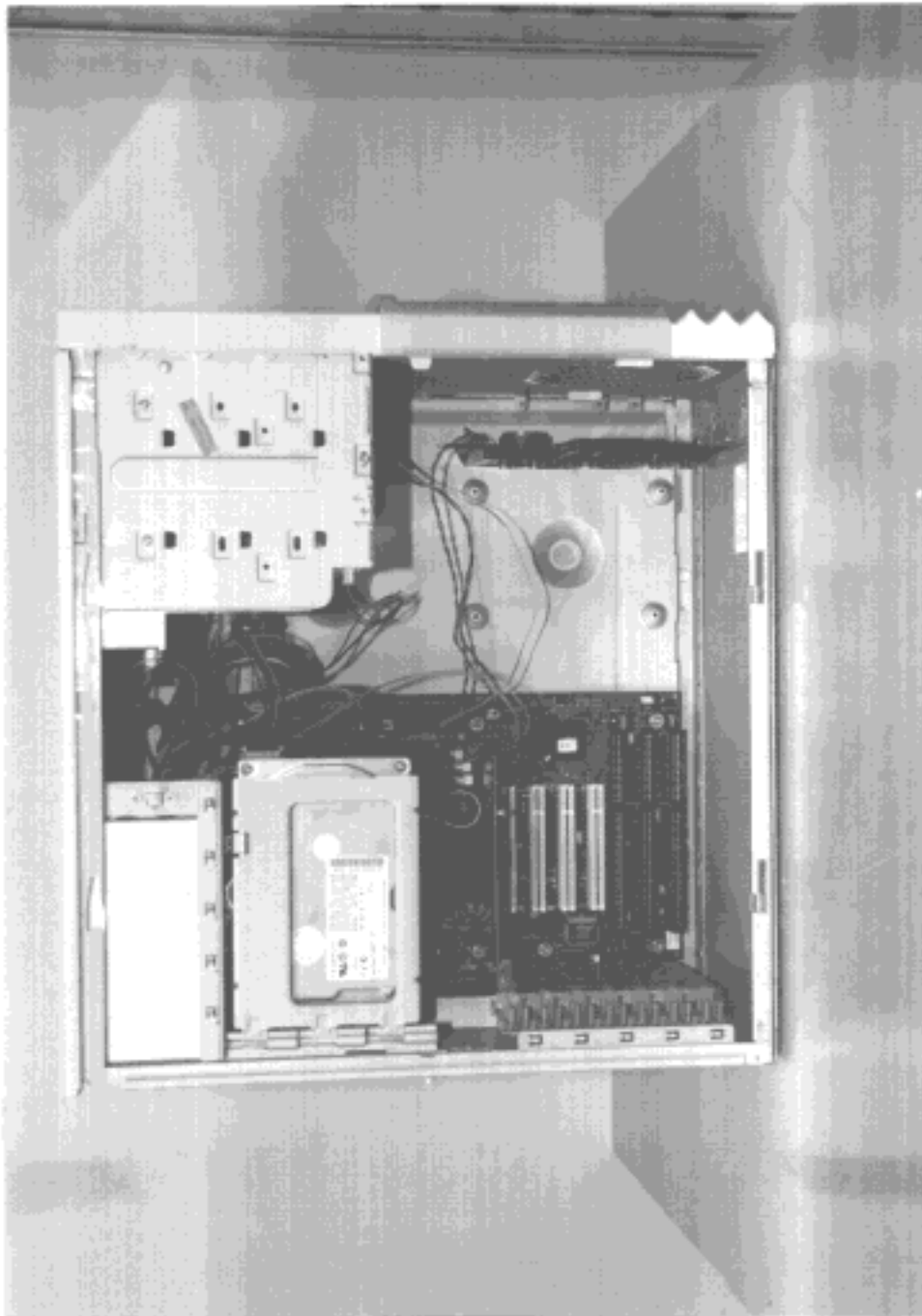


8.3 Opened case, inside view of EUT



**SIEMENS**  
**NIXDORF**

Siemens Nixdorf Informationssysteme AG  
Personal Computer Scenic Pro M6

FCC Identifier:  
HSSCENICM603

Date: Jul 13, 1998

Page:  
50/69

#### 8.4 Chip card reader in system unit



**SIEMENS**  
**NIXDORF**

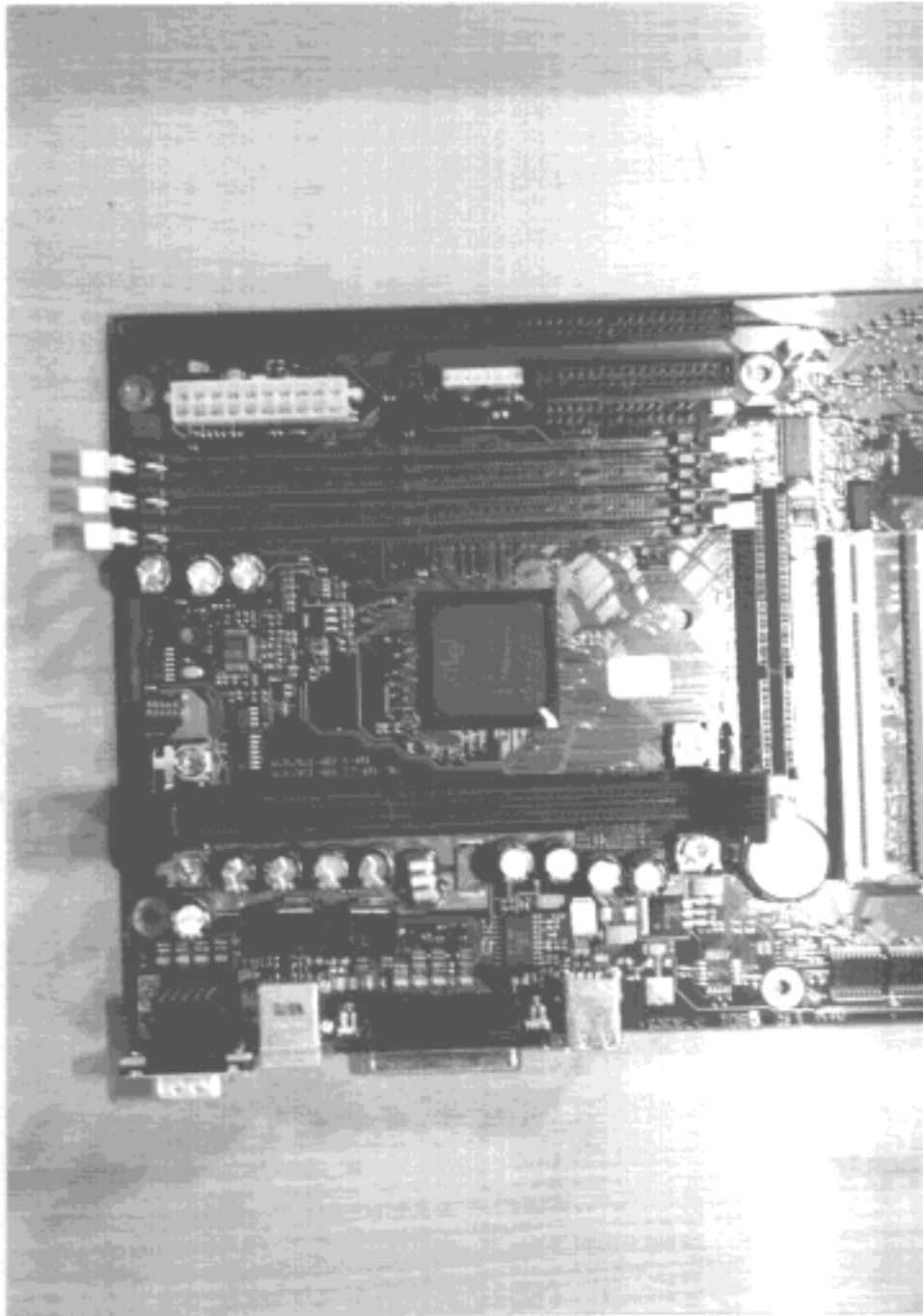
Siemens Nixdorf Informationssysteme AG  
Personal Computer Scenic Pro M6

FCC Identifier:  
H99CENICM603

Date: Jul 13, 1998

Page:  
51/69

8.8 System board, front side view, part one



**SIEMENS**  
**NIXDORF**

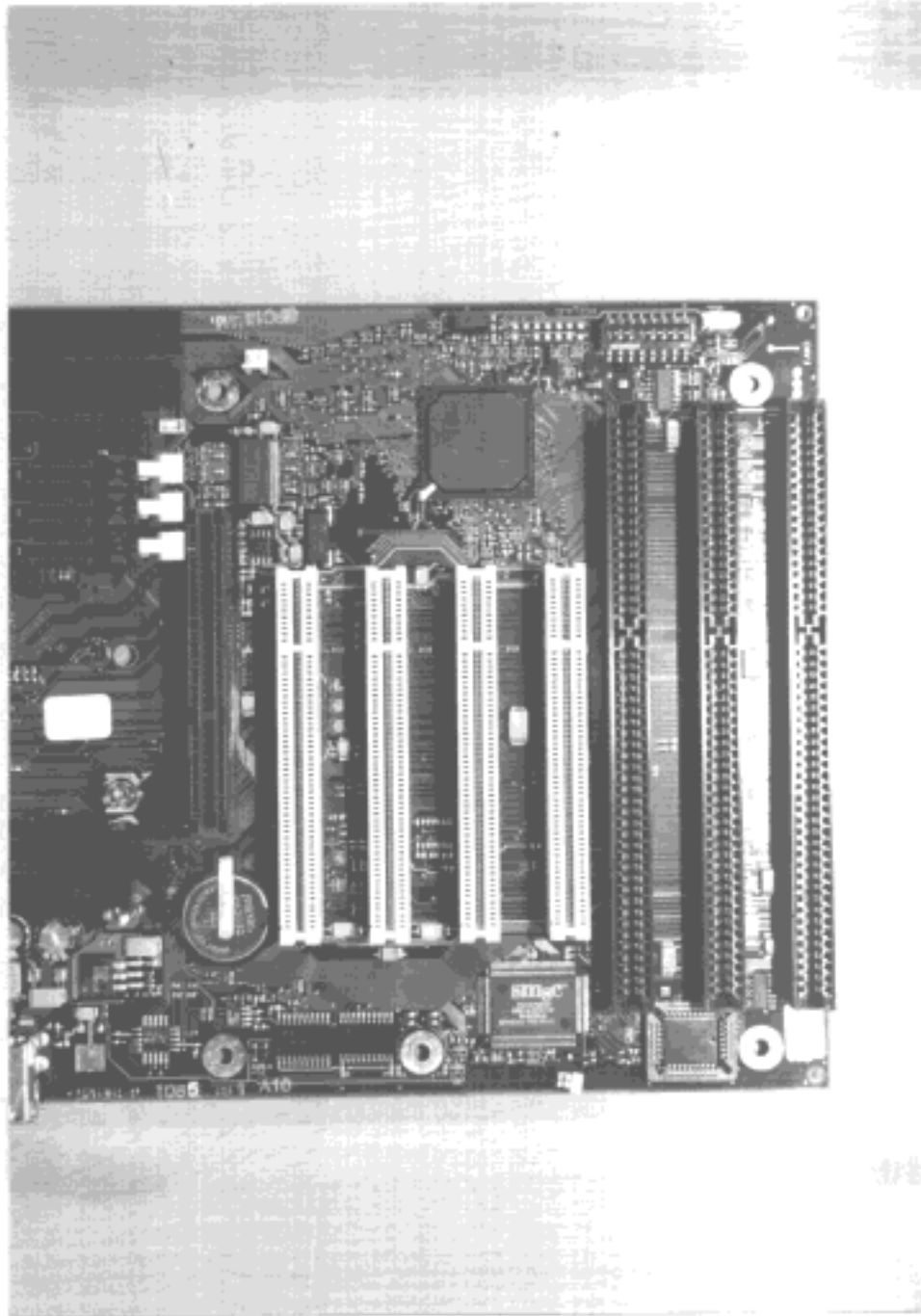
Siemens Nixdorf Informationssysteme AG  
Personal Computer Scenic Pro M6

FCC Identifier:  
HSSSCENICM603

Date: Jul 13, 1998

Page:  
55/69

8.9 System board, front side view, part two



**SIEMENS**  
**NIXDORF**

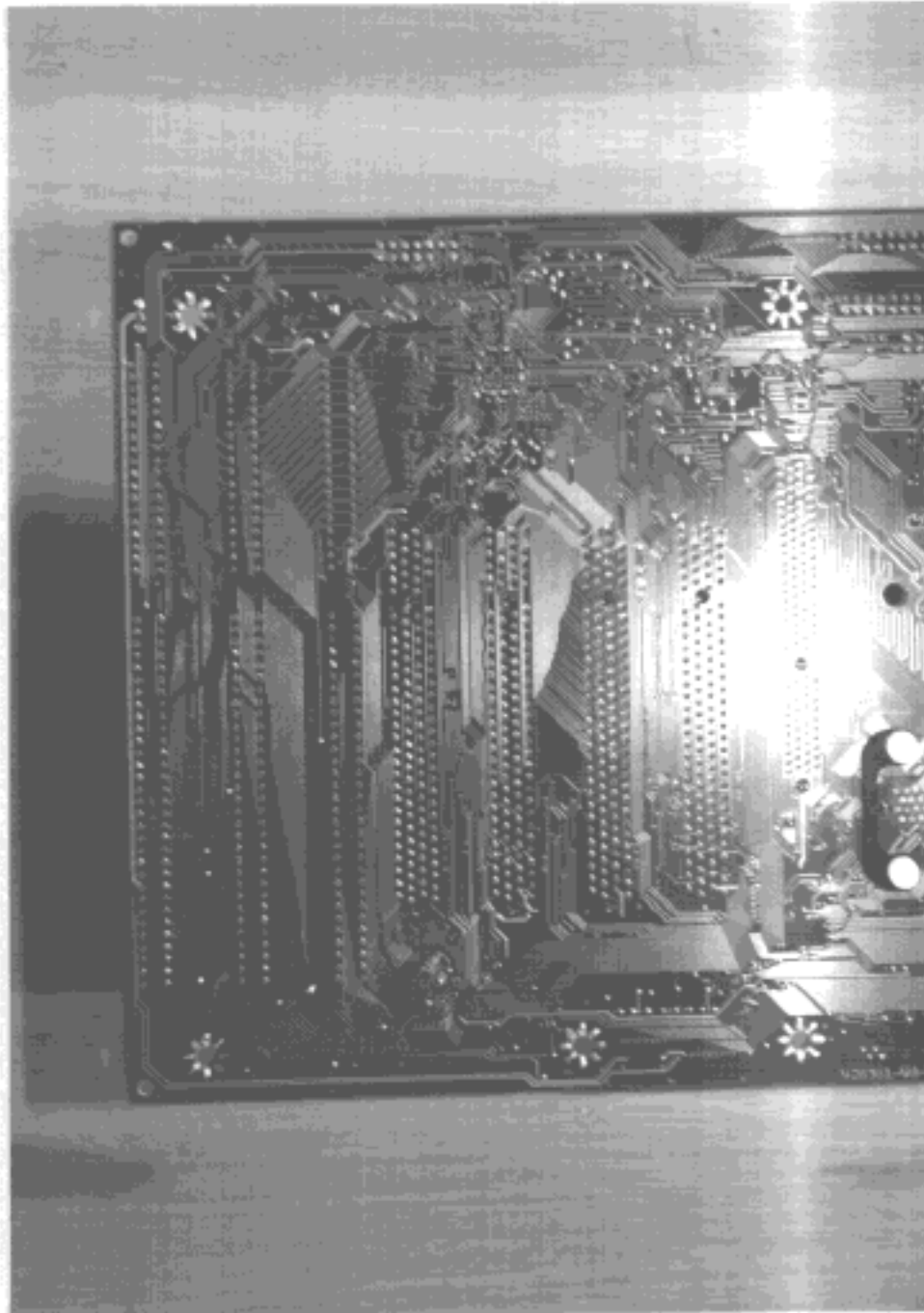
Siemens Nixdorf Informationssysteme AG  
Personal Computer Scenic Pro M6

FCC Identifier:  
HSSSCENICM603

Date: Jul 13, 1998

Page:  
56/69

8.10 System board, rear side view, part one



**SIEMENS**  
**NIXDORF**

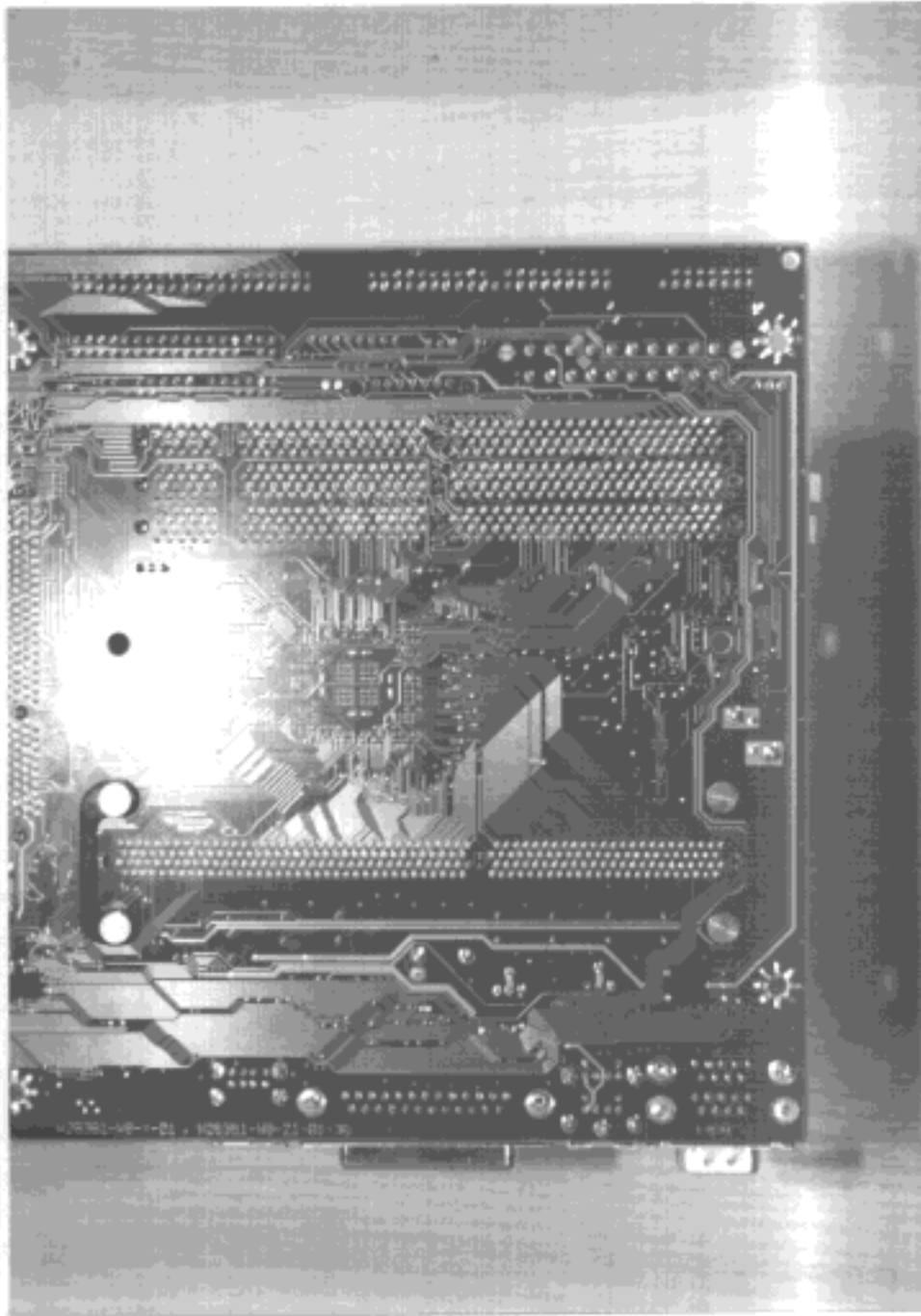
Siemens Nixdorf Informationssysteme AG  
Personal Computer Scenic Pro M6

FCC Identifier:  
HSSSCENICM603

Date: Jul 13, 1998

Page:  
57/69

8.11 System board, rear side view, part two



**SIEMENS**  
**NIXDORF**

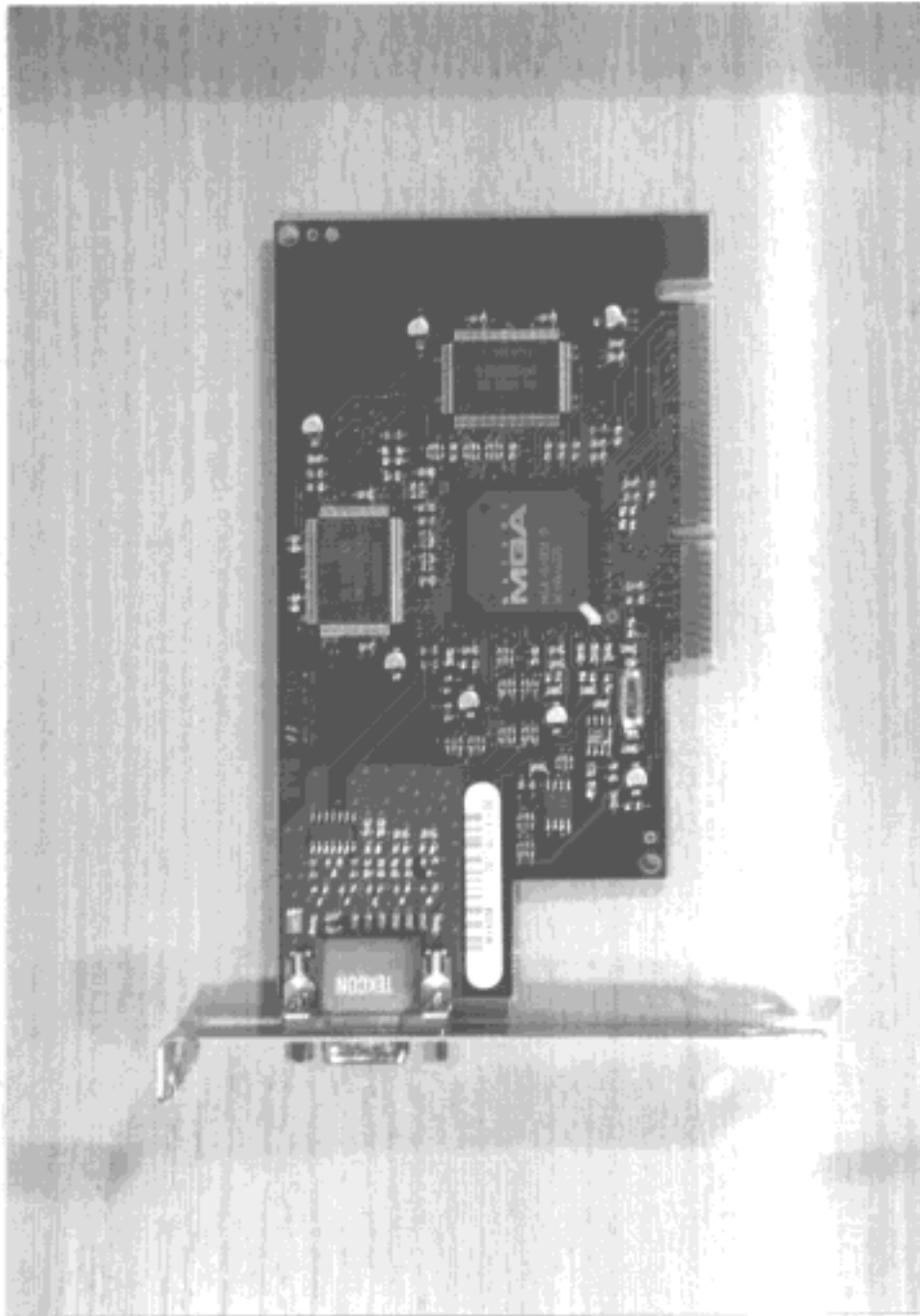
Siemens Nixdorf Informationssysteme AG  
Personal Computer Scenic Pro M6

FCC Identifier:  
HSSSCENICM603

Date: Jul 13, 1998

Page:  
58/69

8.12 Graphic controller board, front side view

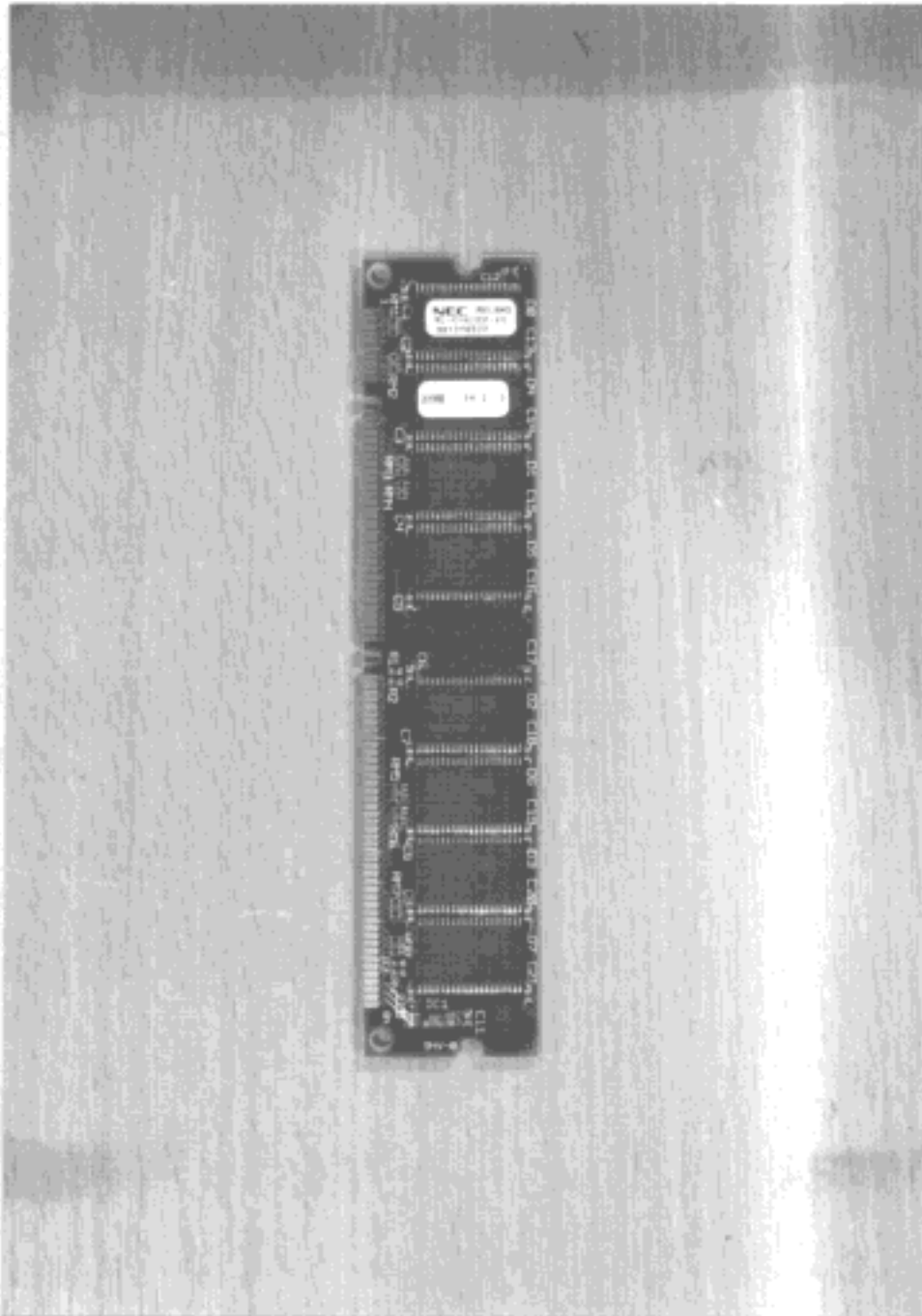


8.13 Graphic controller board, rear side view

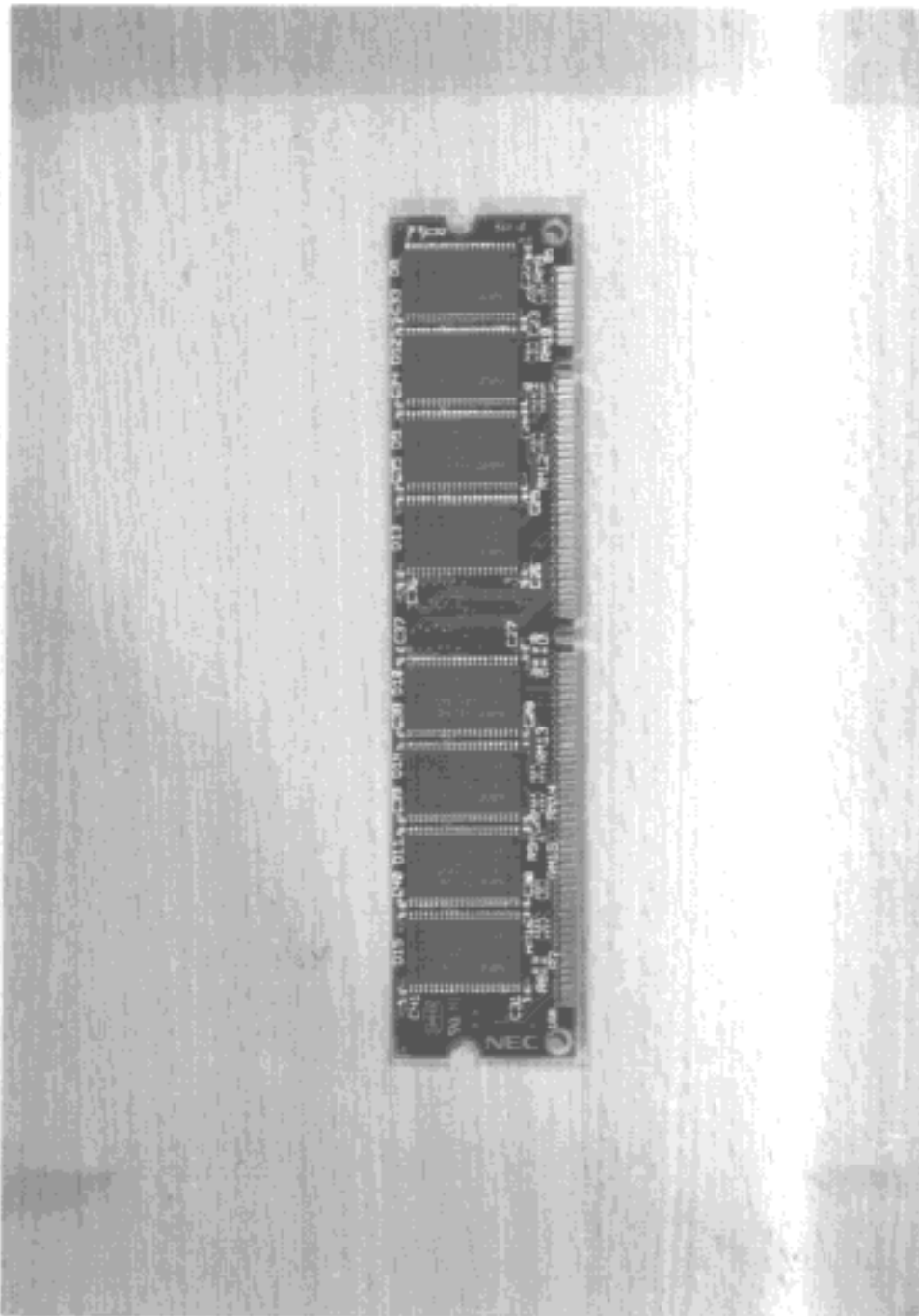




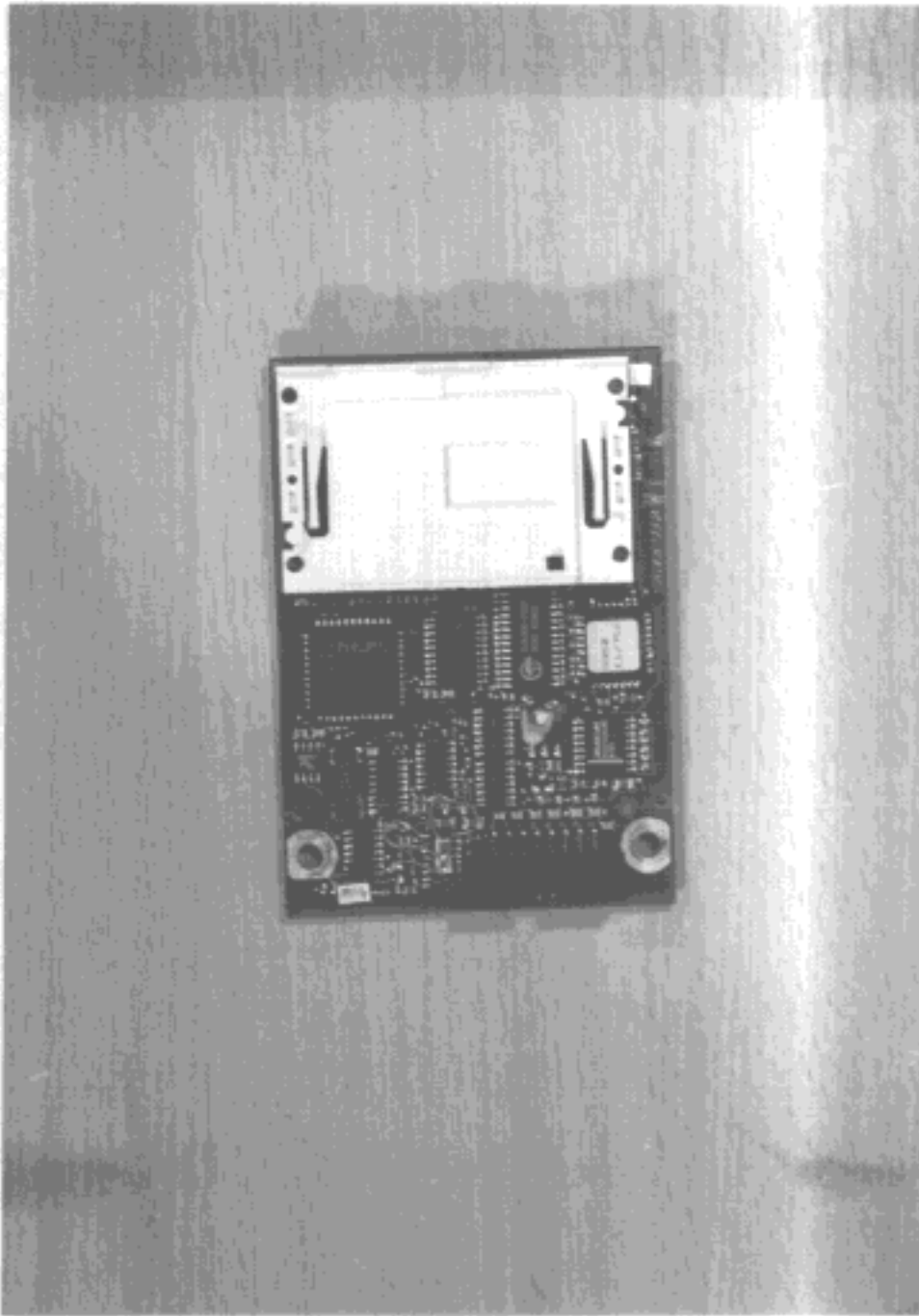
8.14 SDRAM module, front side view



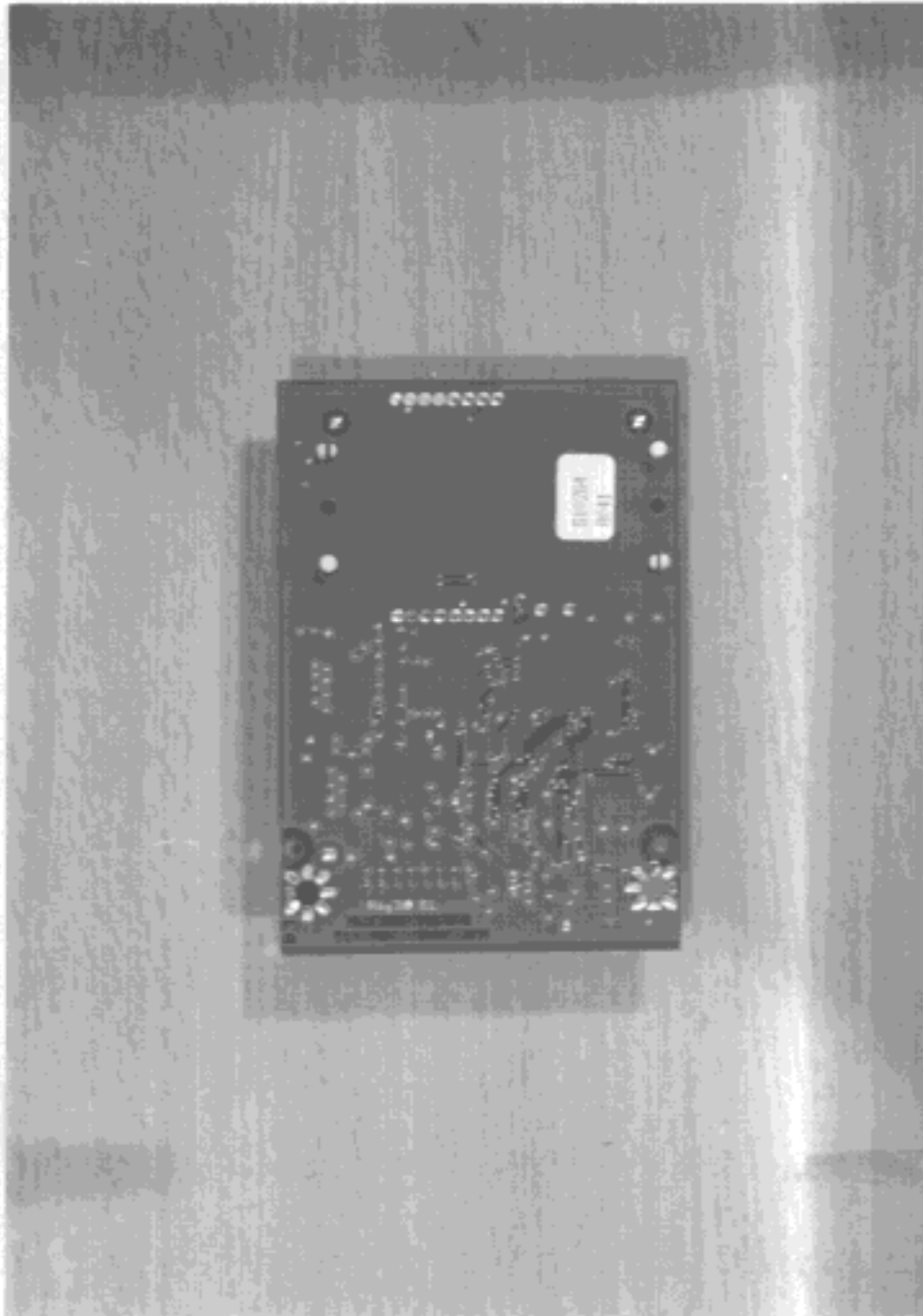
8.15 SDRAM module, rear side view



8.16 Chip card reader, front side view



8.17 Chip card reader, rear side view



**SIEMENS**  
**NIXDORF**

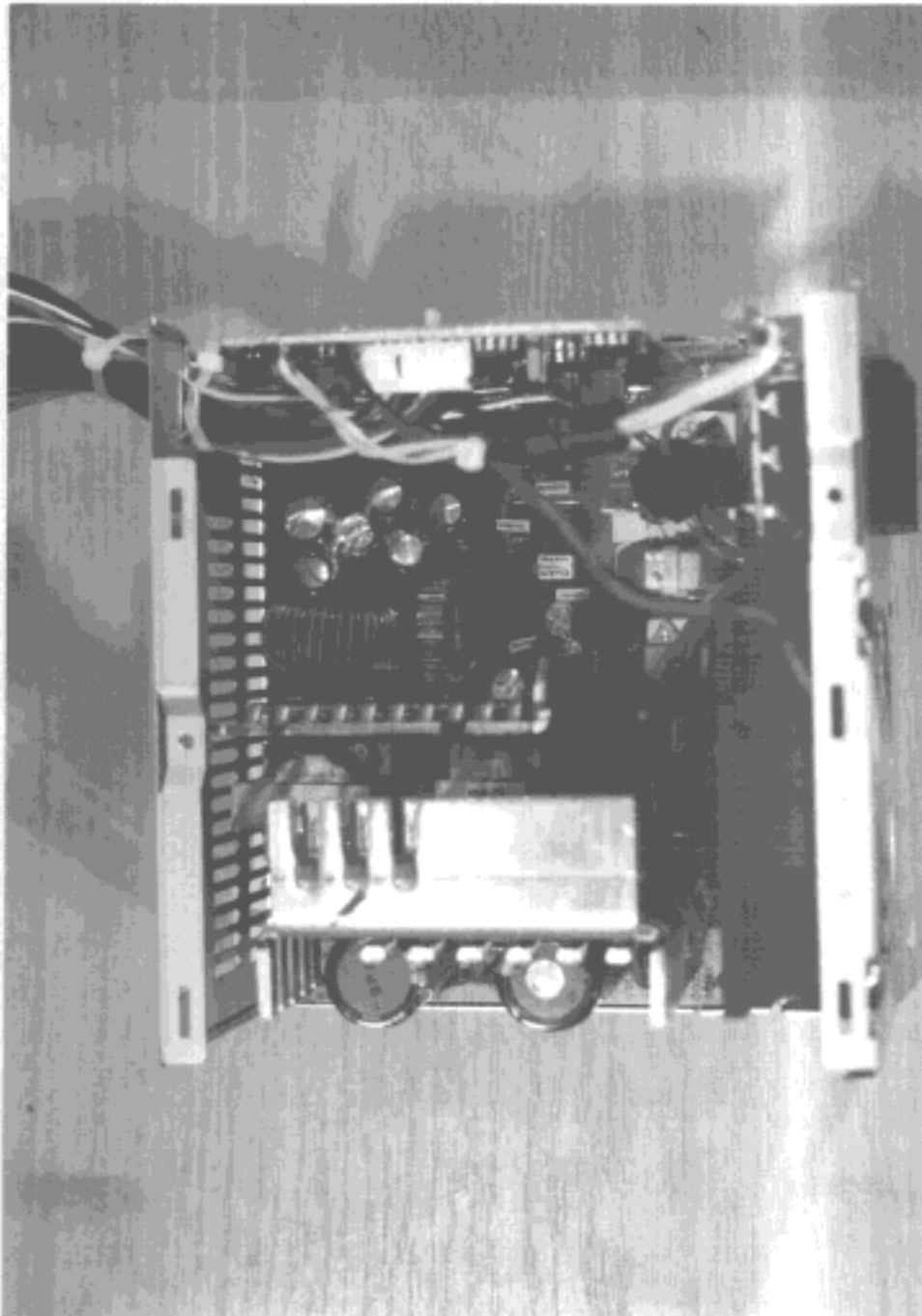
Siemens Nixdorf Informationssysteme AG  
Personal Computer Scenic Pro M6

FCC Identifier:  
HSSSCENICM603

Date: Jul 13, 1998

Page:  
64/69

8.19 Power supply ASTEC, opened case, inside view



**SIEMENS**  
**NIXDORF**

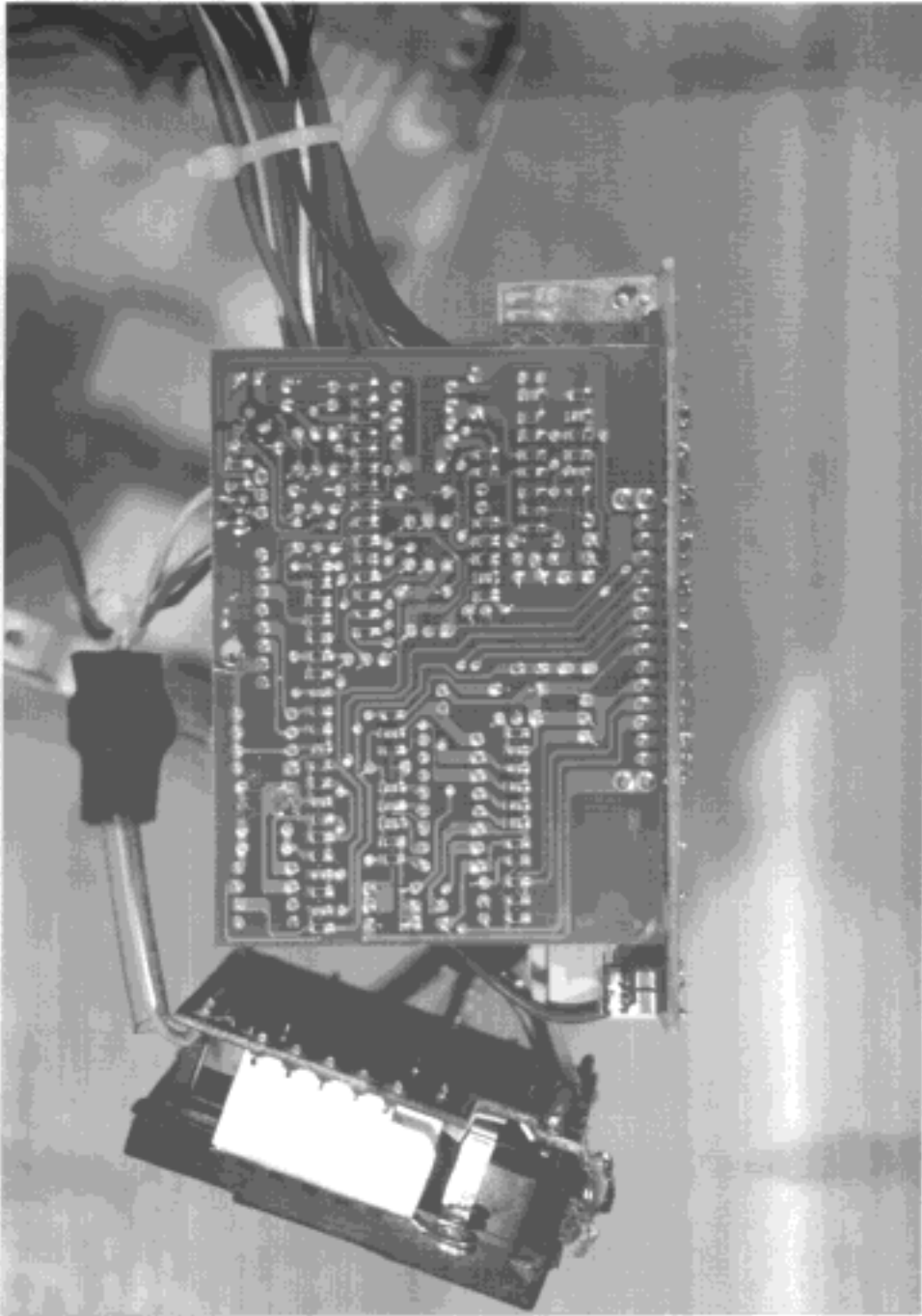
Siemens Nixdorf Informationssysteme AG  
Personal Computer Scenic Pro M6

FCC Identifier:  
HSSSCFNICM603

Date: Jul 13, 1998

Page:  
66/69

8.20 Power supply ASTEC, regulator board, rear side view



**SIEMENS**  
**NIXDORF**

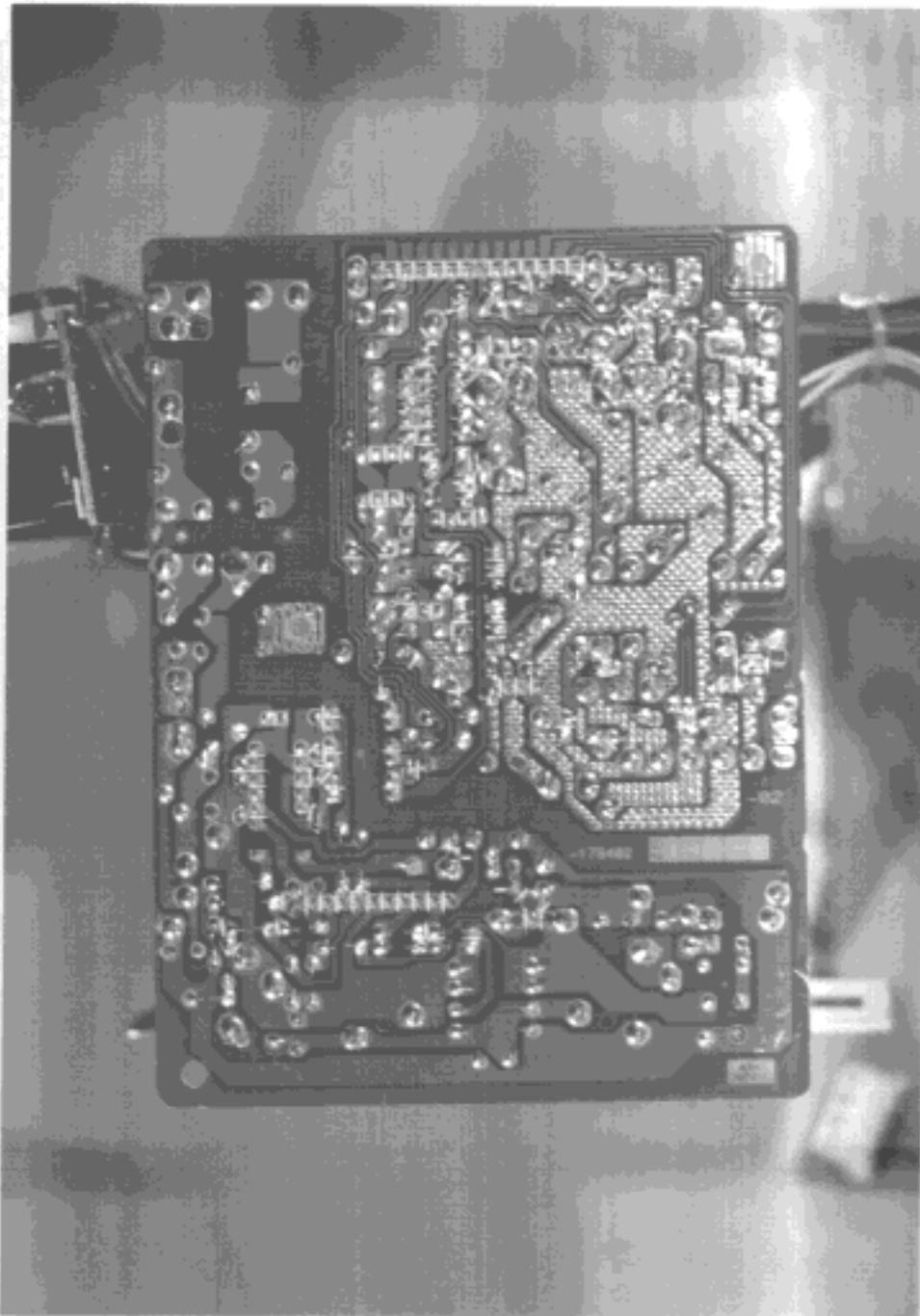
Siemens Nixdorf Informationssysteme AG  
Personal Computer Scenic Pro M6

FCC Identifier:  
HSSCFNICM603

Date: Jul 13, 1998

Page:  
67/69

8.21 Power supply ASTEC, rear side view



**SIEMENS**  
**NIXDORF**

Siemens Nixdorf Informationssysteme AG  
Personal Computer Scenic Pro M6

FCC Identifier:  
HSSCENICM603

Date: Jul 13, 1998

Page:  
68/69