

8.3 Opened case, inside view of EUT with second serial interface



SIEMENS
NIXDORF

Siemens Nixdorf Informationssysteme AG
Personal Computer Scenic Pro C6

FCC Identifier:
HSSSCNIC603

Date: Apr 27, 1998

Page:
83/104

8.4 Chip card reader in system unit



SIEMENS
NIXDORF

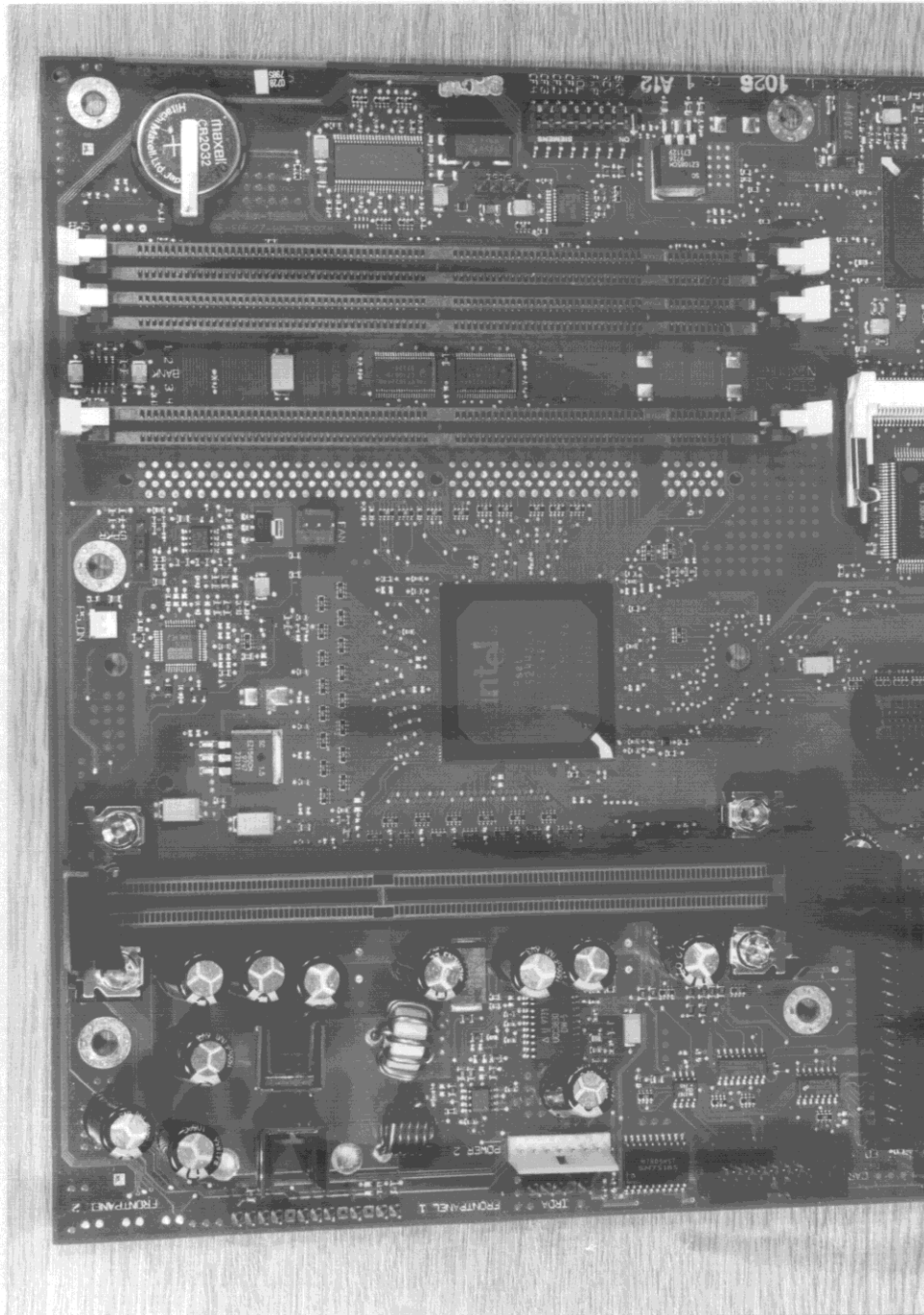
Siemens Nixdorf Informationssysteme AG
Personal Computer Scenic Pro C6

FCC Identifier:
HSSSCENIC603

Date: Apr 27, 1998

Page:
84/104

8.8 System board, front side view, part one



SIEMENS
NIXDORF

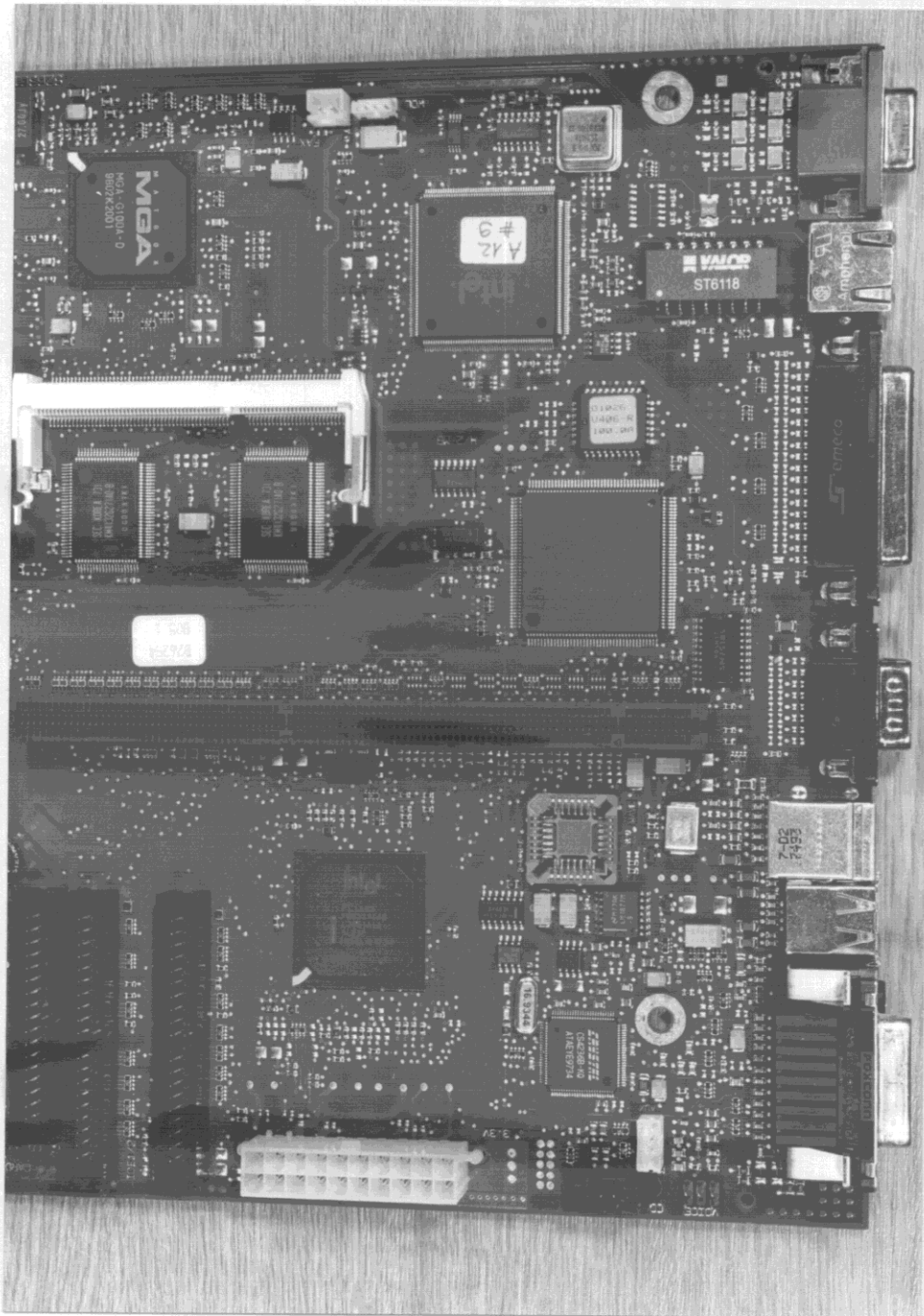
Siemens Nixdorf Informationssysteme AG
Personal Computer Scenic Pro C6

FCC Identifier:
HSSCENICC603

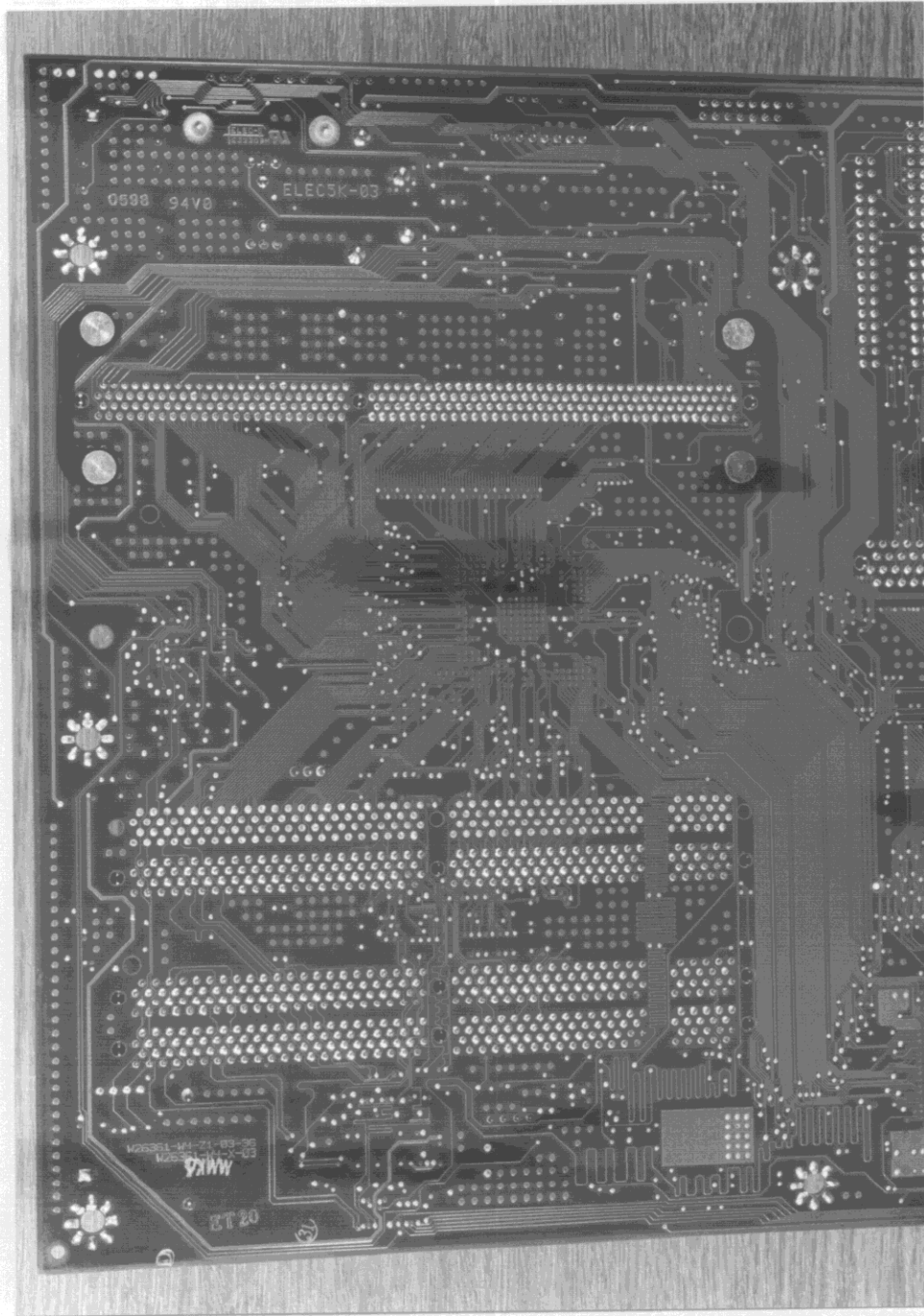
Date: Apr 27, 1998

Page:
88/104

8.9 System board, front side view, part two



8.10 System board, rear side view, part one



**SIEMENS
NIXDORF**

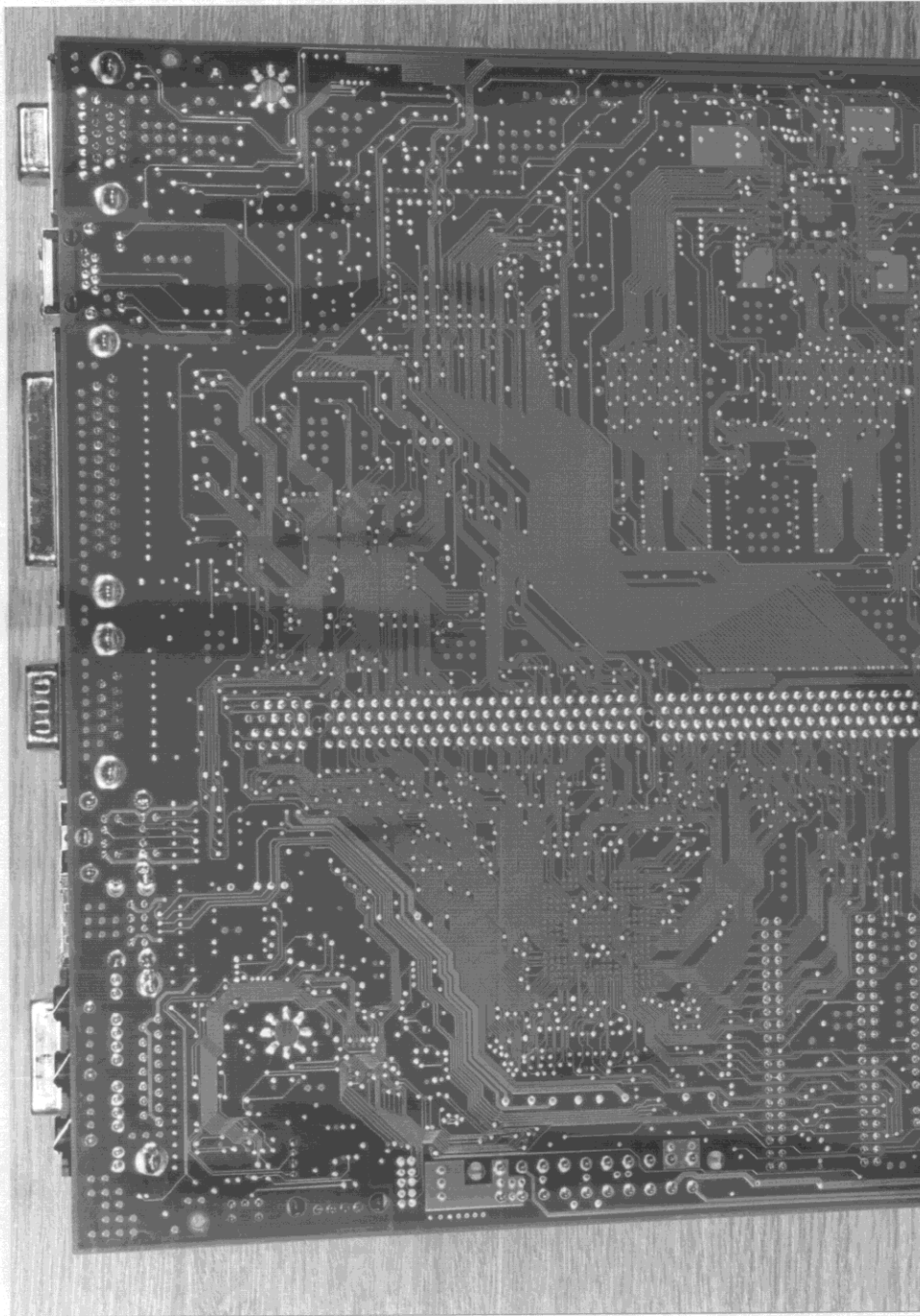
Siemens Nixdorf Informationssysteme AG
Personal Computer Scenic Pro C6

FCC Identifier:
HSSSCENIC603

Date: Apr 27, 1998

Page:
90/104

8.11 System board, rear side view, part two



**SIEMENS
NIXDORF**

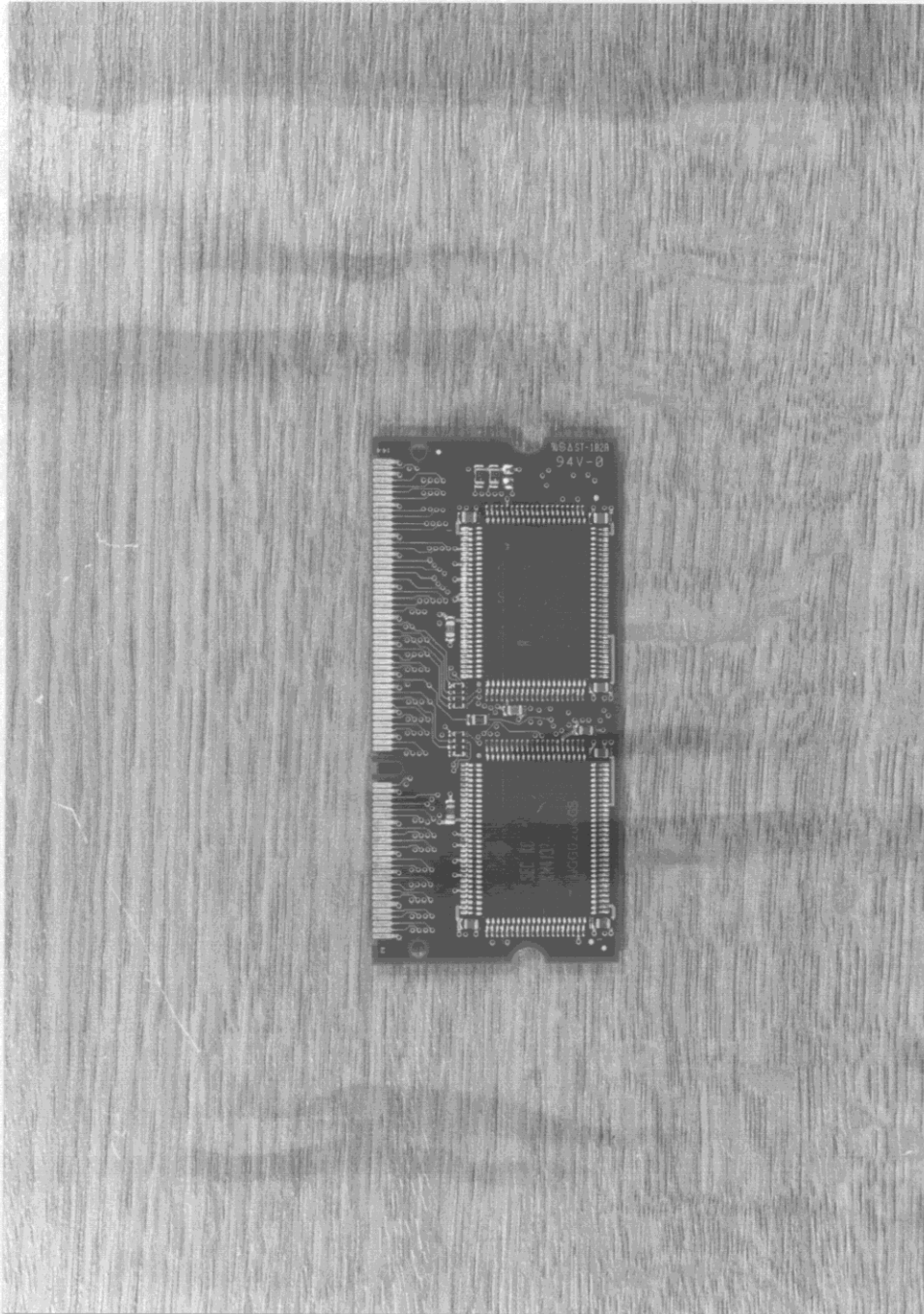
Siemens Nixdorf Informationssysteme AG
Personal Computer Scenic Pro C6

FCC Identifier:
HSSSCNIC603

Date: Apr 27, 1998

Page:
91/104

8.12 Video storage piggy board, front side view



SIEMENS
NIXDORF

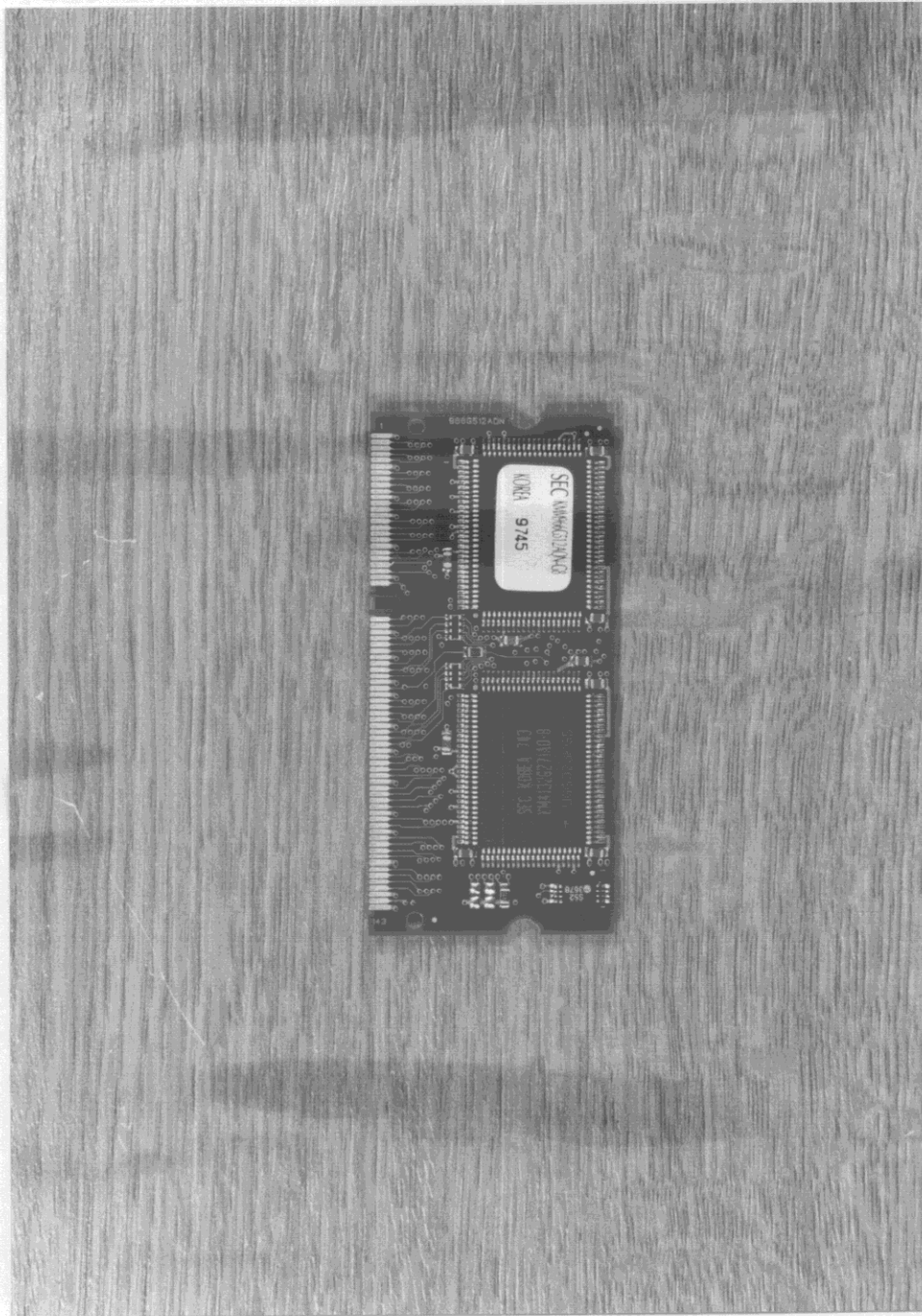
Siemens Nixdorf Informationssysteme AG
Personal Computer Scenic Pro C6

FCC Identifier:
HSSSCNIC603

Date: Apr 27, 1998

Page:
92/104

8.13 Video storage piggy board, rear side view



**SIEMENS
NIXDORF**

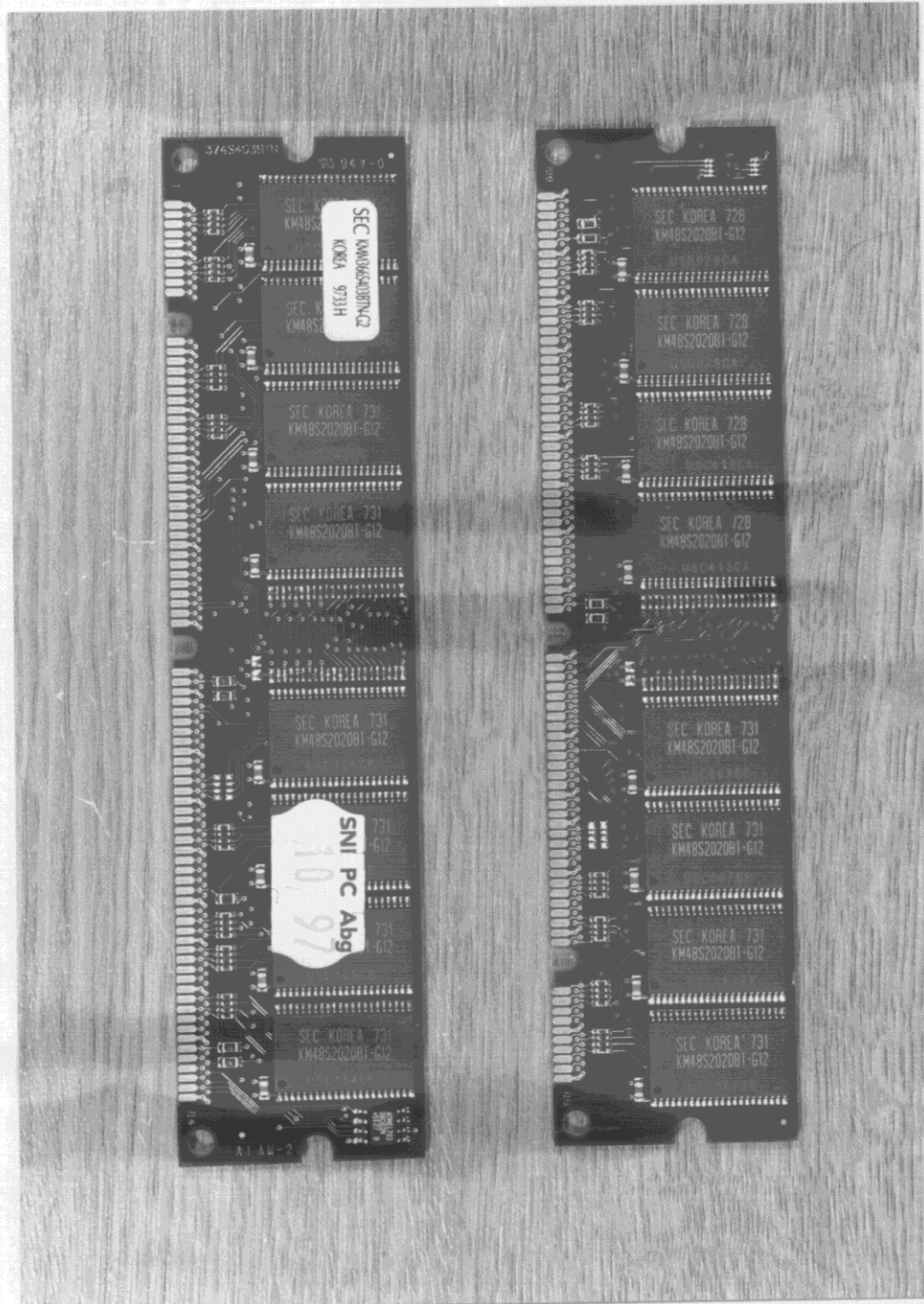
Siemens Nixdorf Informationssysteme AG
Personal Computer Scenic Pro C6

FCC Identifier:
HSSSCENICC603

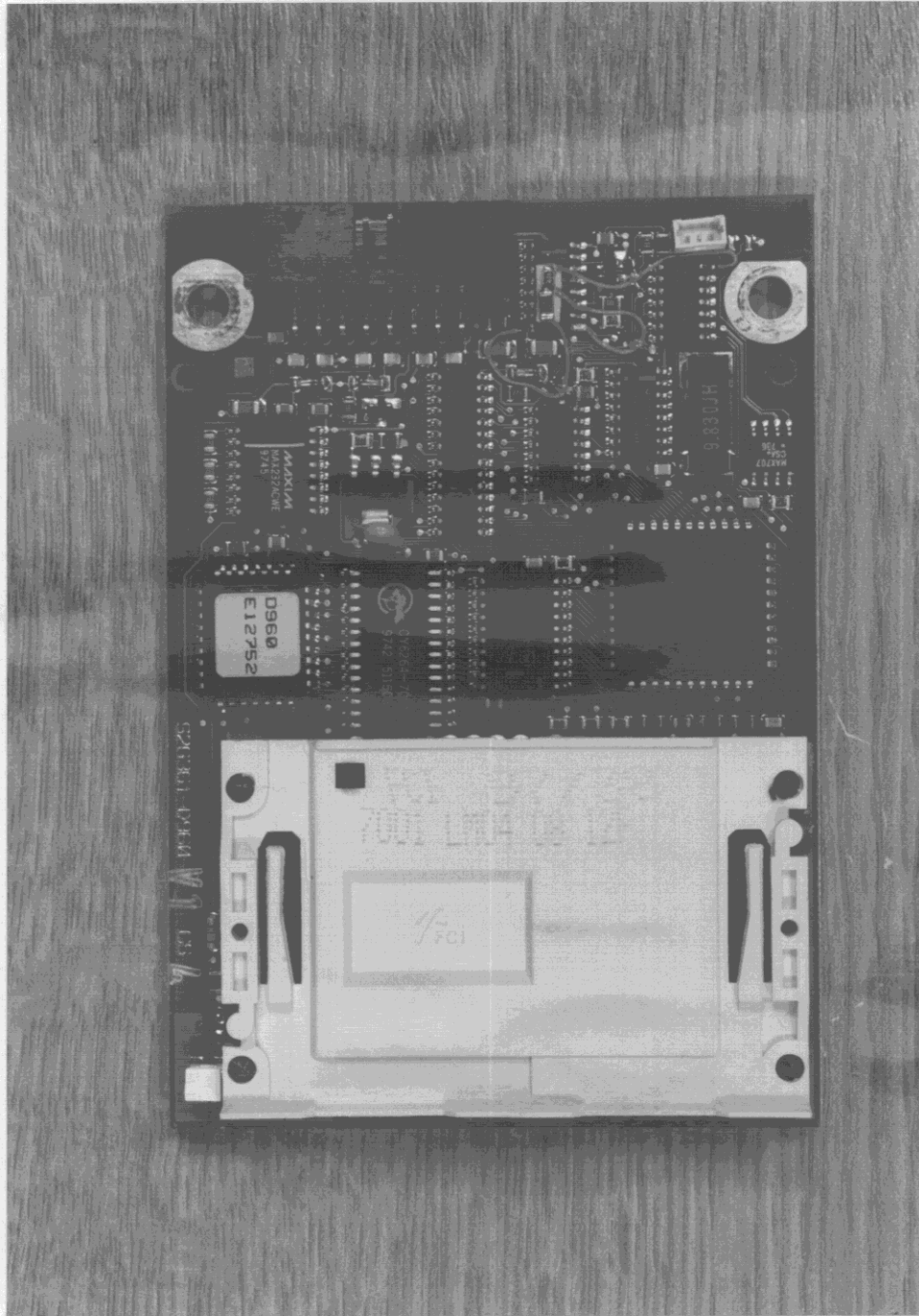
Date: Apr 27, 1998

Page:
93/104

8.14 RAM module, front and rear side view



8.15 Chip card reader, front side view



SIEMENS
NIXDORF

Siemens Nixdorf Informationssysteme AG
Personal Computer Scenic Pro C6

FCC Identifier:
HSSCENIC603

Date: Apr 27, 1998

Page:
95/104

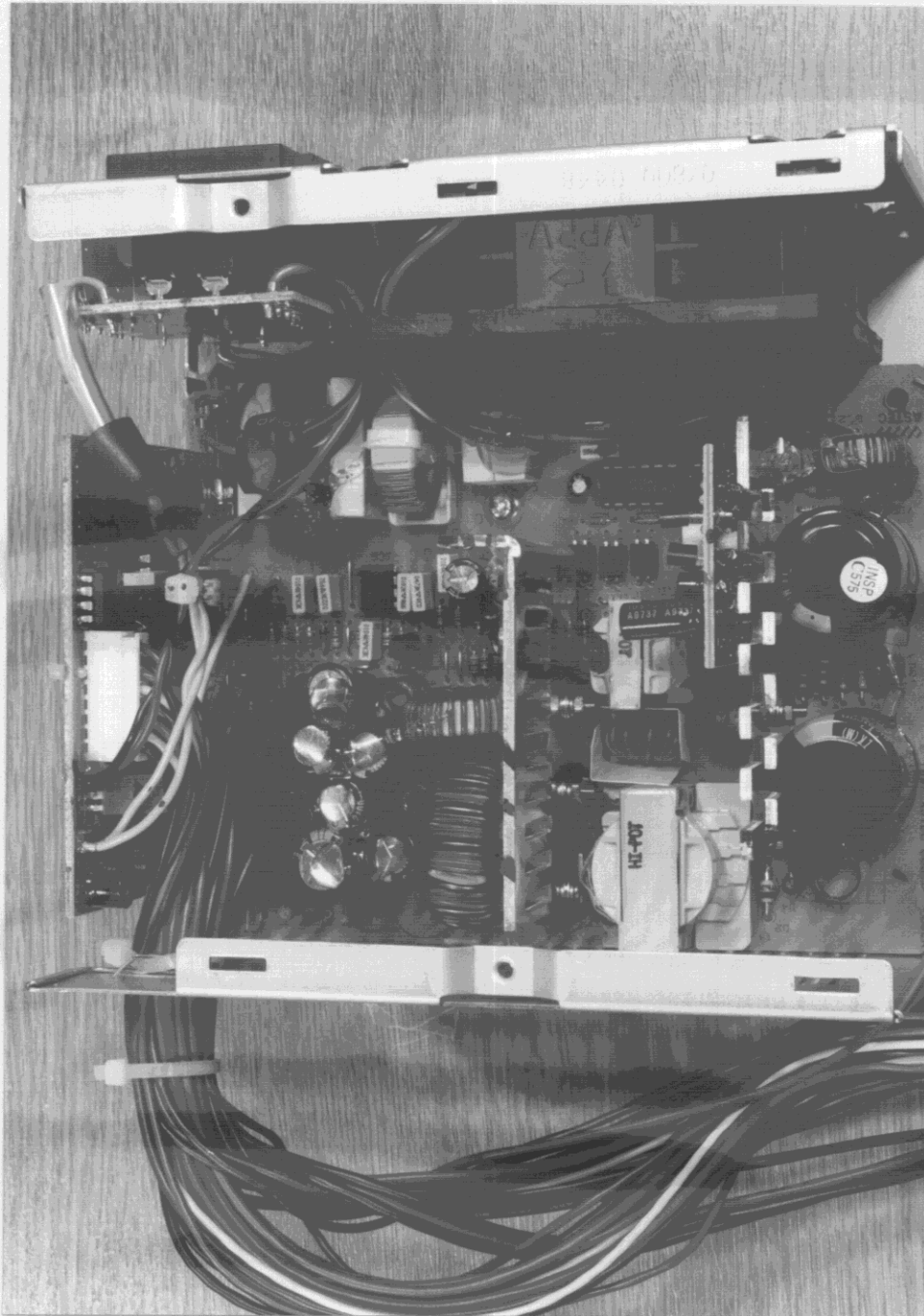
8.16 Chip card reader, rear side view



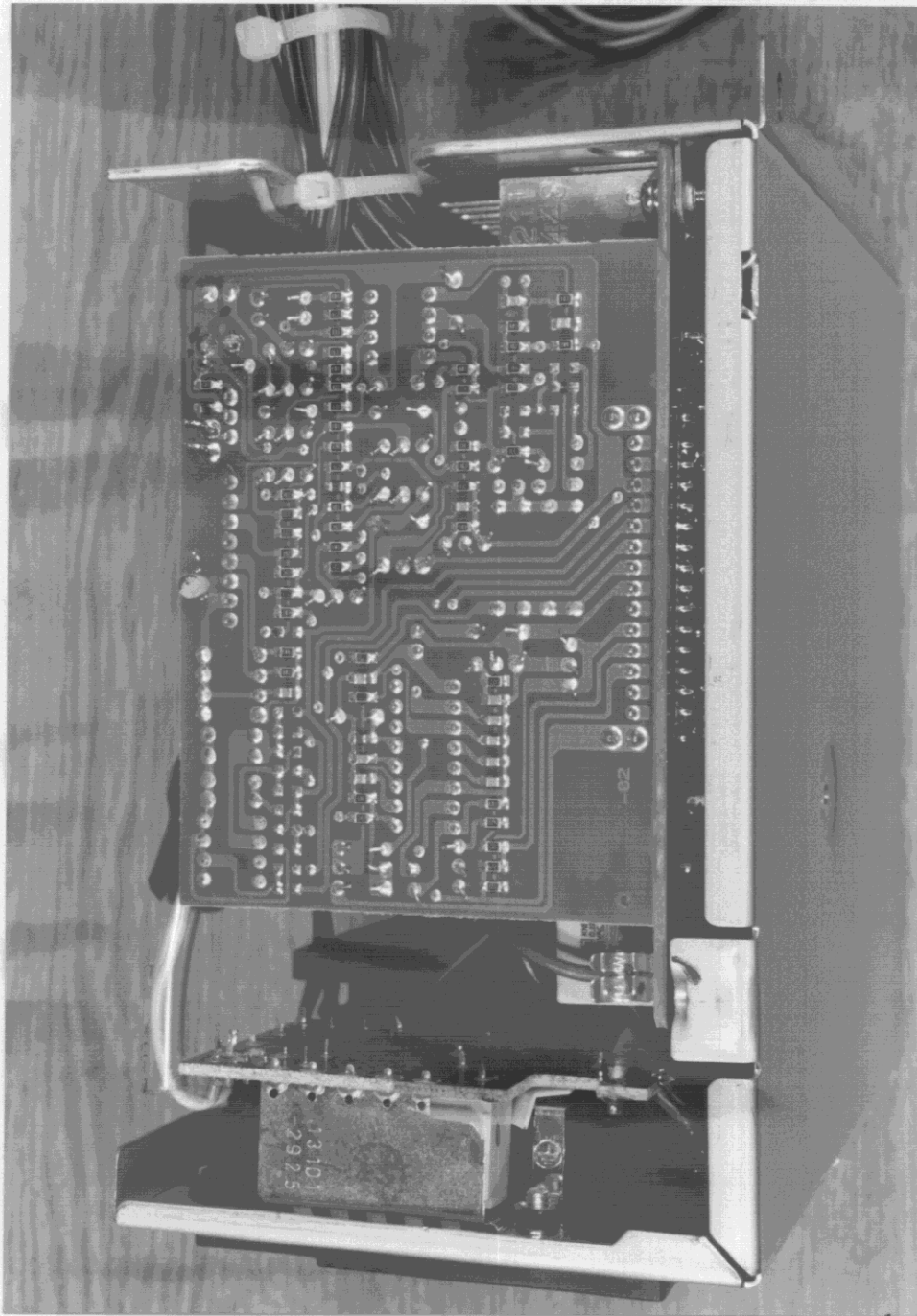
8.17 Power supply ASTEC, closed case, top side view



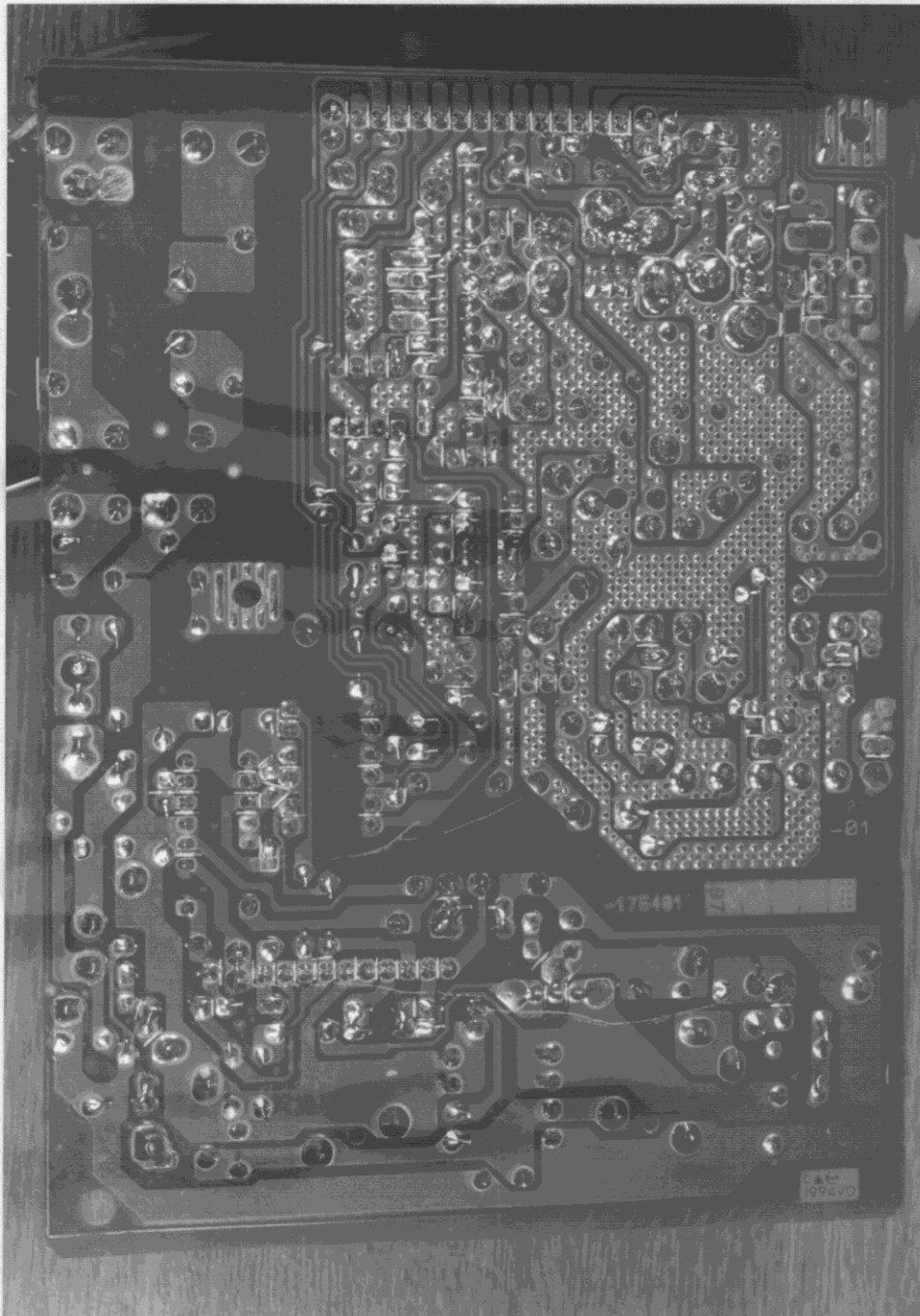
8.18 Power supply ASTEC, opened case, inside view



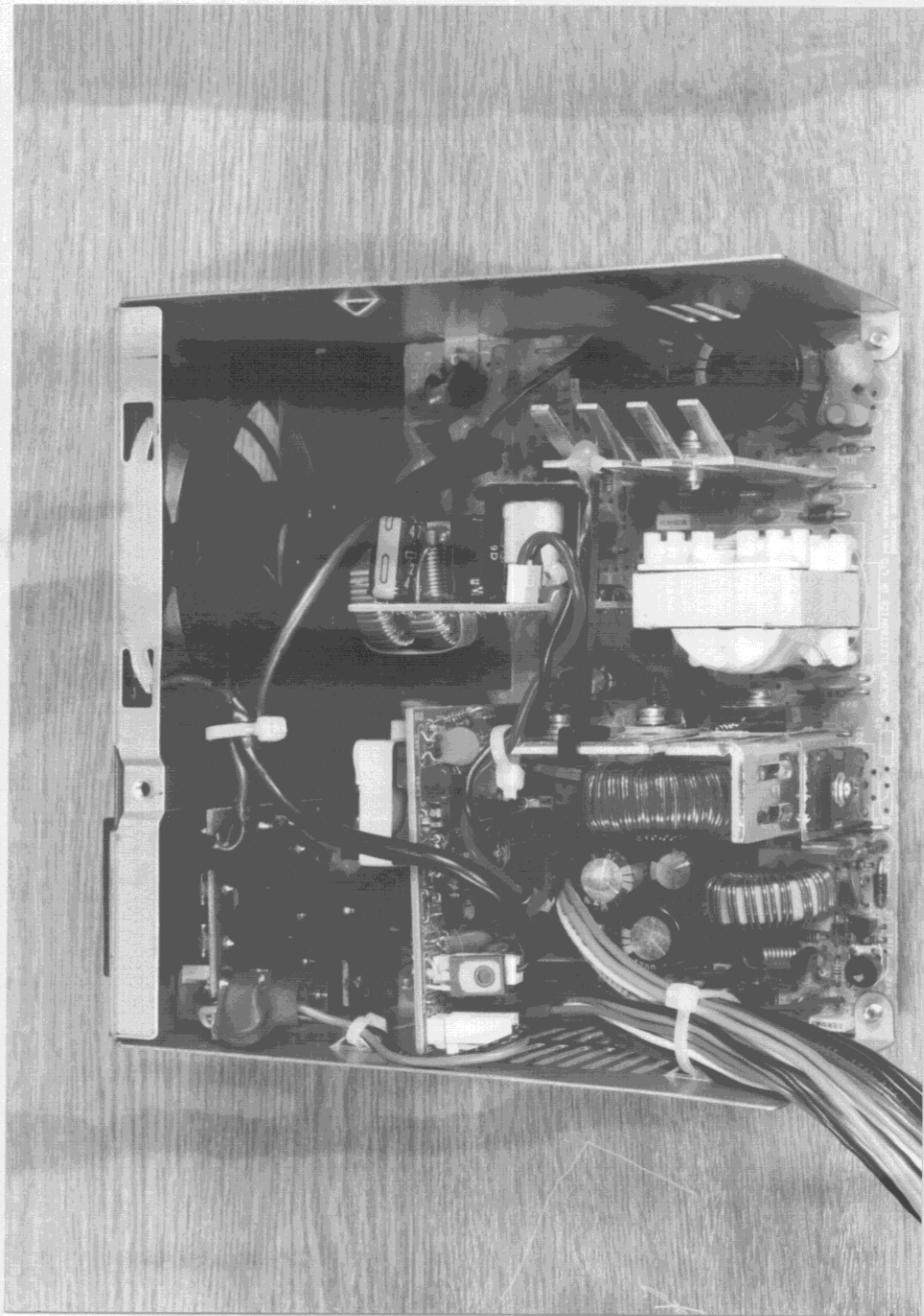
8.19 Power supply ASTEC, regulator board, rear side view



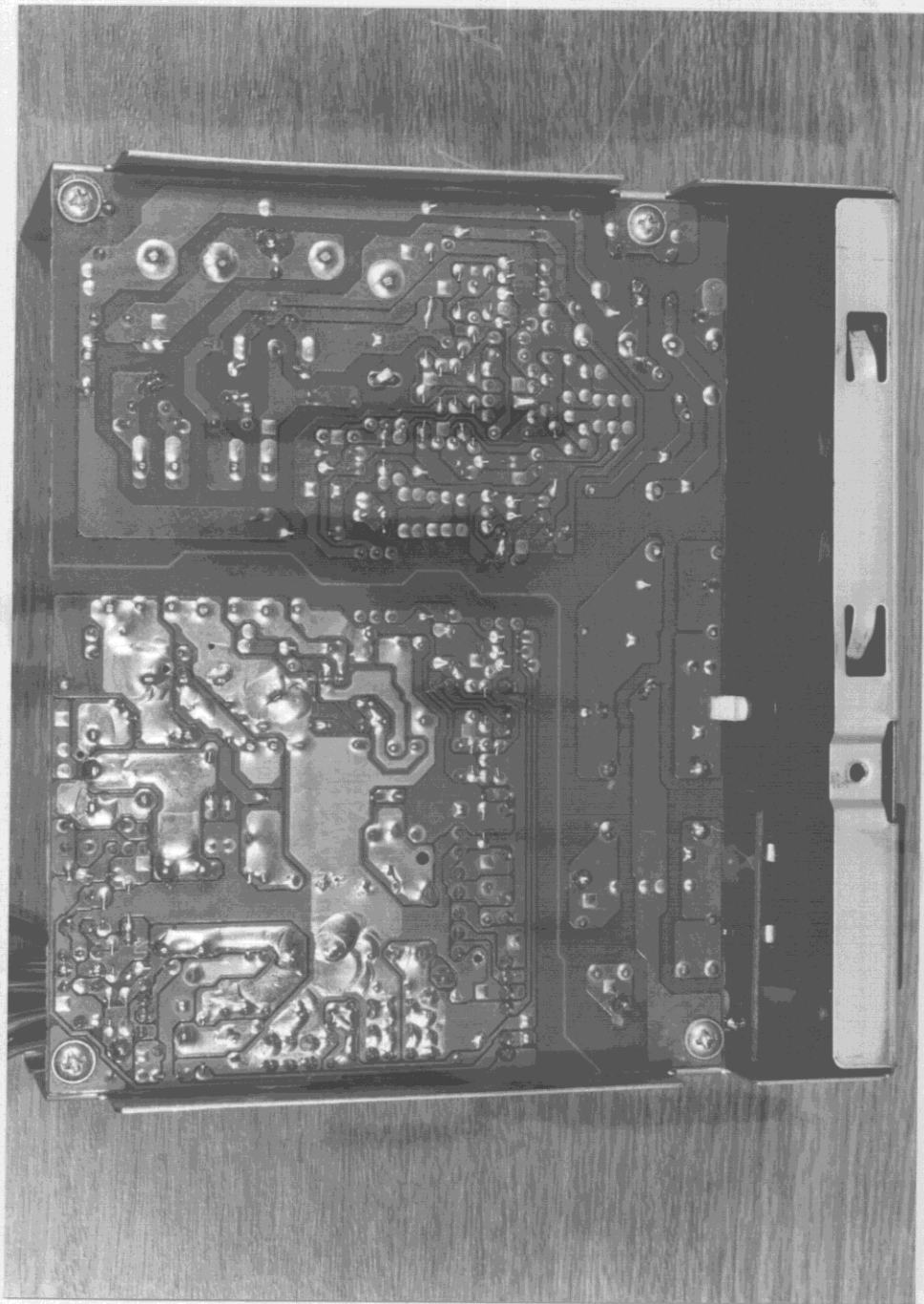
8.20 Power supply ASTEC, rear side view



8.22 Power supply Minebea, opened case, inside view



8.23 Power supply Minebea, rear side view



SIEMENS
NIXDORF

Siemens Nixdorf Informationssysteme AG
Personal Computer Scenic Pro C6

FCC Identifier:
HSSCENIC603

Date: Apr 27, 1998

Page:
103/104