

**Conducted noise according to:**

**EN 55022 class B**

EUT: Scenic 650 (DT6) Sheffield PIII 600 MHz, D1106-A12  
Manufacturer: Siemens AG  
Operating Condition: Scr "H" 1024x768/100 Hz; HD-CD-LAN-test  
Test Site: Siemens AG Augsburg SK2  
Operator: M. Heuser  
Configuration: fully conf, Monitor MCM 1705, PSU:E425-V20 (costor)  
Comment: Monitor power via system outlet  
Start of Test: 28.07.99 / 15:06:30

**SCAN TABLE: "Volt\_015-30fin"**

Unit: dBµV

Detector: Mode:

Curve 1: MaxPeak MaxHold  
Curve 2: Average MaxHold

**Subrange 1:**

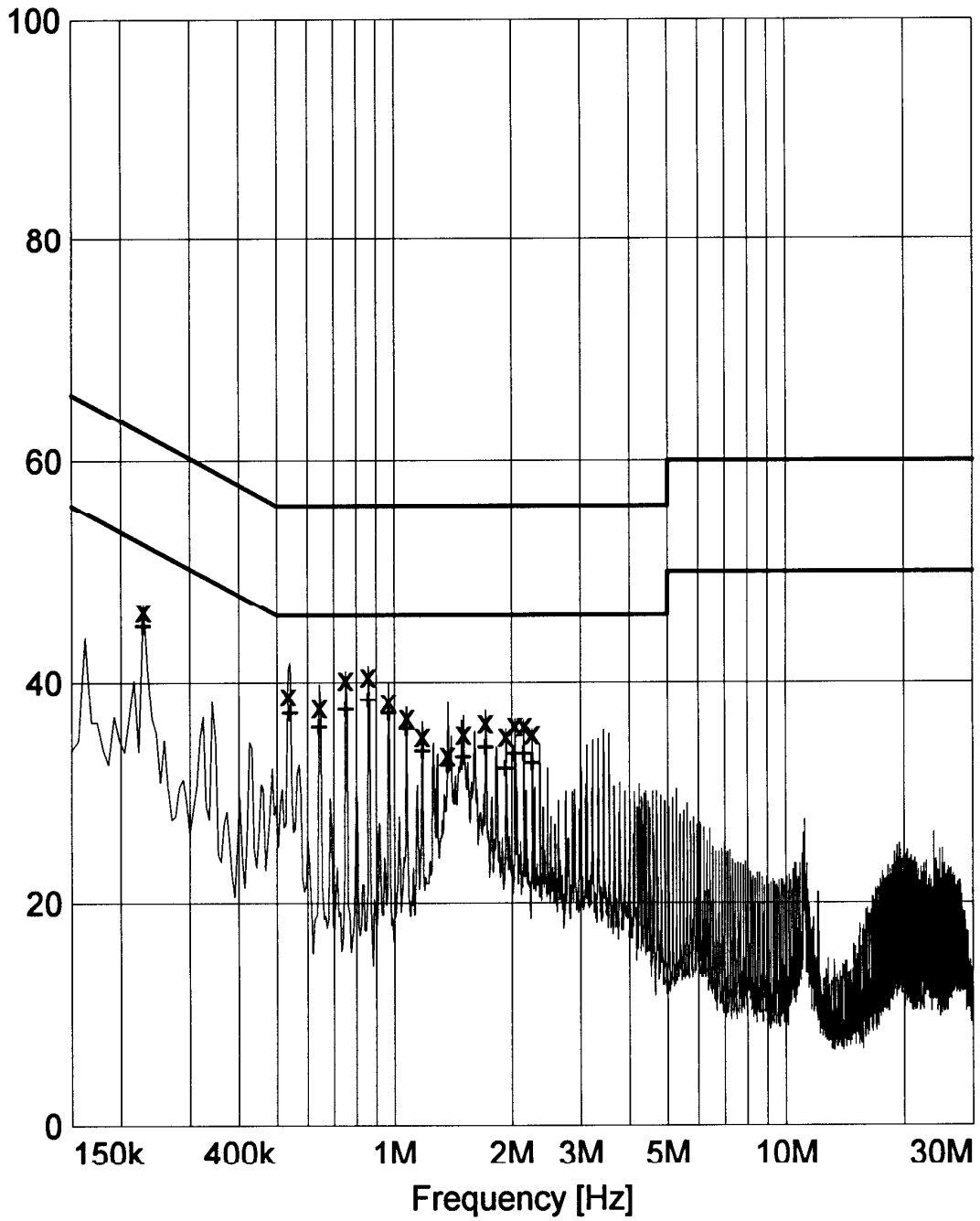
Start Frequency: 150.0 kHz Step Size: 6.0 kHz  
Stop Frequency: 30.0 MHz  
Measure Time: 10.0 ms  
IF Bandwidth: 10 kHz

Receiver: ESH3 Transducer: ESH3-Z5  
Signal Path: None System Transducer: None  
Meas. Mode: Lin Add. Transd. 1: ESH3-Z2  
Tracking Gen.: Off Add. Transd. 2: None  
Input: -- Add. Transd. 3: None

Preamplifier: -- Demodulation: A3  
RF Att.: 0 dB Volume: --  
Ref. Level: -- Squelch: --  
Min. RF Att.: -- Option: None  
IF Att.: LowDistortion  
Autorange: On

Curve 1: On Repetition: Single  
Curve 2: On Stop Mark: Off

Level [dB $\mu$ V]



x x MES Quasi Peak  
+ + MES Average  
— MES Peak  
— LIM EN 55022/B V QP  
— LIM EN 55022/B V AV

**MEASUREMENT RESULT: "Quasi Peak"**

28.07.99 15:24

Frequency MHz	Level dBµV	Transd dB	Limit dBµV	Margin dB	Line	PE
0.228000	46.50	10.0	62.5	16.0	L1	GND
0.534000	38.80	10.0	56.0	17.2	N	GND
0.642000	37.70	10.0	56.0	18.2	L1	GND
0.750000	40.30	10.0	56.0	15.7	L1	GND
0.858000	40.60	10.0	56.0	15.4	N	GND
0.966000	38.30	10.0	56.0	17.7	L1	GND
1.074000	36.80	10.0	56.0	19.2	N	GND
1.182000	35.10	10.0	56.0	20.9	N	GND
1.368000	33.40	10.0	56.0	22.6	N	GND
1.506000	35.30	10.0	56.0	20.7	N	GND
1.716000	36.30	10.0	56.0	19.7	L1	GND
1.932000	35.10	10.0	56.0	20.9	L1	GND
2.040000	36.10	10.0	56.0	19.9	L1	GND
2.148000	36.00	10.0	56.0	20.0	L1	GND
2.256000	35.30	10.0	56.0	20.7	L1	GND

**MEASUREMENT RESULT: "Average"**

28.07.99 15:24

Frequency MHz	Level dBµV	Transd dB	Limit dBµV	Margin dB	Line	PE
0.228000	45.00	10.0	52.5	7.5	L1	GND
0.540000	37.10	10.0	46.0	8.8	N	GND
0.642000	35.80	10.0	46.0	10.2	L1	GND
0.750000	37.40	10.0	46.0	8.6	N	GND
0.858000	38.30	10.0	46.0	7.7	N	GND
0.966000	37.10	10.0	46.0	8.8	N	GND
1.074000	35.70	10.0	46.0	10.2	N	GND
1.182000	33.70	10.0	46.0	12.2	L1	GND
1.374000	32.40	10.0	46.0	13.6	N	GND
1.506000	33.10	10.0	46.0	12.9	N	GND
1.716000	34.00	10.0	46.0	12.0	L1	GND
1.932000	32.10	10.0	46.0	13.9	L1	GND
2.040000	33.40	10.0	46.0	12.6	L1	GND
2.148000	33.40	10.0	46.0	12.6	L1	GND
2.256000	32.60	10.0	46.0	13.4	L1	GND

**Radiated emission according to:**

**to EN55022 class B**

EUT: Scenic G50 (DTG) Sheffield PIII 600 MHz, D1106-A12  
Manufacturer: Siemens AG  
Operating Condition: scr. "H" 1024\*768/100 Hz, HD+CD-Test  
Test Site: SNI-Augsburg (Semi-anechoic chamber 10m)  
Operator: A. Siebenhütter  
Configuration: fully conf.; Monitor MCM 1705  
Comment: PSU: E425-V20 (costoriented)  
Start of Test: 28.07.99 / 13:26:56

**SCAN TABLE: "10m/30-1000"**

Short Description: 10m Field Strength  
Unit: dBµV/m

Detector: Mode:

Curve 1: MaxPeak ClearWrite

Subrange 1:

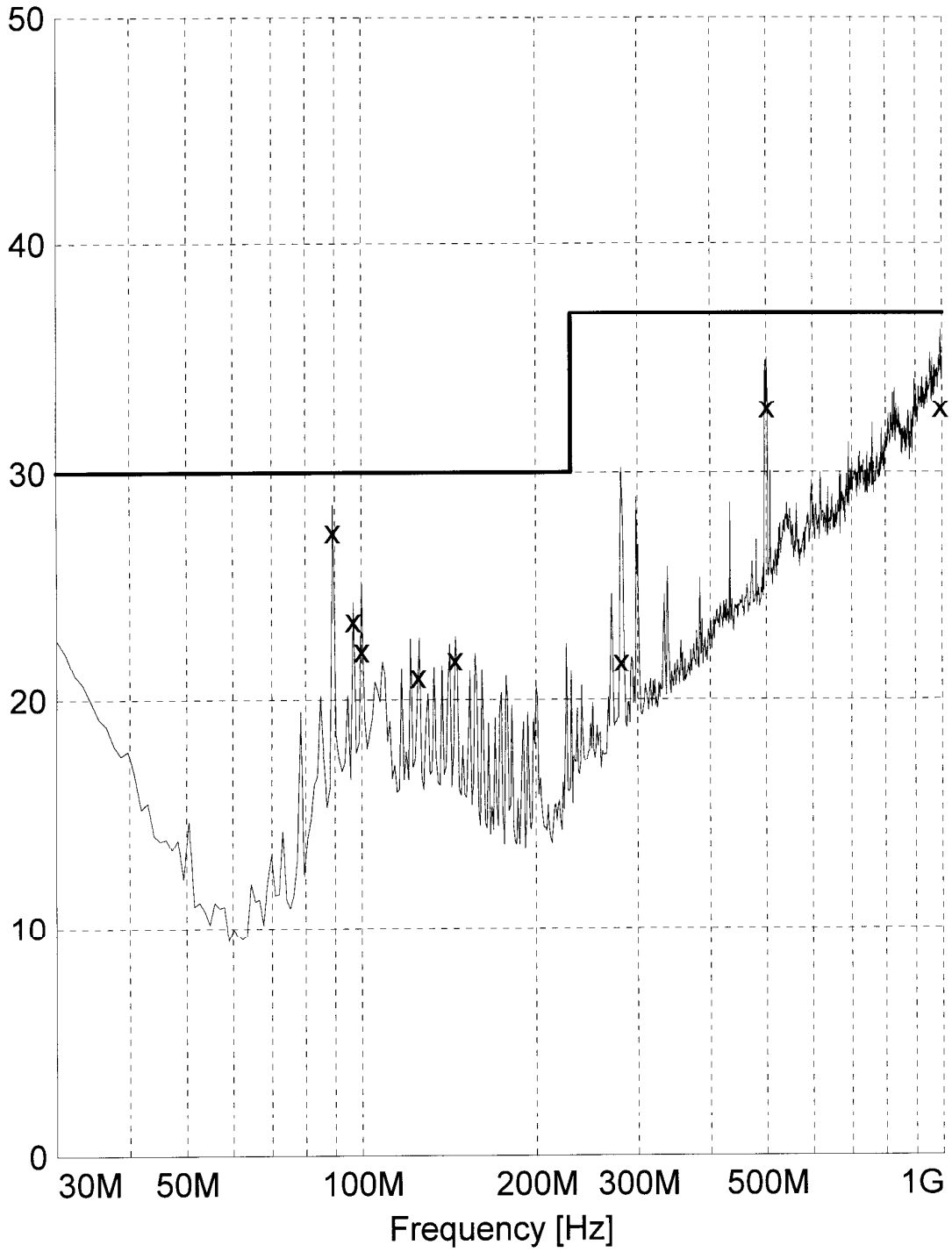
Start Frequency: 30.0 MHz Step Size: 30.0 kHz  
Stop Frequency: 1.0 GHz  
Measure Time: 10.0 ms  
IF Bandwidth: 120 kHz

Receiver: ESXI Transducer: CBL6111 cal. 5/99  
Signal Path: 2DC-CP1X1 System Transducer: RFin2-CP1/X1  
Meas. Mode: Lin Add. Transd. 1: cable30-1000  
Tracking Gen.: Off Add. Transd. 2: None  
Input: 2DC Add. Transd. 3: None

Preamplifier: 10 dB Demodulation: AM  
RF Att.: Coupled Volume: 70 %  
Ref. Level: -60.0 dBm Squelch: --  
Min. RF Att.: 0 dB Option: None  
1F Att.: --  
Autorange: On

Curve 1: On Repetition: Single  
Stop Mark: Off  
Stop Message: Off  
Stop Message:

Level [dB $\mu$ V/m]



x x MES Quasi Peak  
— MES Preview Peak  
— LIM EN55022/B

**MEASUREMENT RESULT: "Quasi Peak"**

28.07.99 14:43

Frequency MHz	Level dBµV/m	Transd dB	Limit dBµV/m	Margin dB	Height cm	Azimuth deg	Polarisation
89.100000	27.40	9.2	30.0	2.6	160.0	330.00	VERTICAL
96.660000	23.50	10.3	30.0	6.5	160.0	270.00	VERTICAL
100.020000	22.20	10.7	30.0	7.8	160.0	90.00	VERTICAL
125.190000	21.00	12.6	30.0	9.0	400.0	119.00	HORIZONTAL
145.020000	21.80	12.1	30.0	8.2	400.0	90.00	HORIZONTAL
280.860000	21.70	14.3	37.0	15.3	280.0	300.00	HORIZONTAL
500.250000	32.80	20.0	37.0	4.2	160.0	330.00	HORIZONTAL
991.830000	32.80	28.7	37.0	4.2	100.0	239.00	VERTICAL

**Radiated emission according to:**

**to FCC class B**

EUT: Scenic 650(DT6) PIII/600 MHz  
Manufacturer: Siemens AG  
Operating Condition: scr. "H" 1024\*768/100 Hz, HD+CD-Test  
Test Site: SNI-Augsburg (Semi-anechoic chamber 10m)  
Operator: A. Siebenhütter  
Configuration: full configuration  
Comment: PSU: E425-V20 (costoriented)  
Start of Test: 09.08.99 / 10:51:53

**SCAN TABLE: "FCC1-5GHz"**

Short Description: 3m Messung FCC 1 bis 3 GHz  
Unit: dBµV/m

Detector: Mode:

Curve 1: MaxPeak MaxHold  
Curve 2: Average MaxHold

Subrange 1:

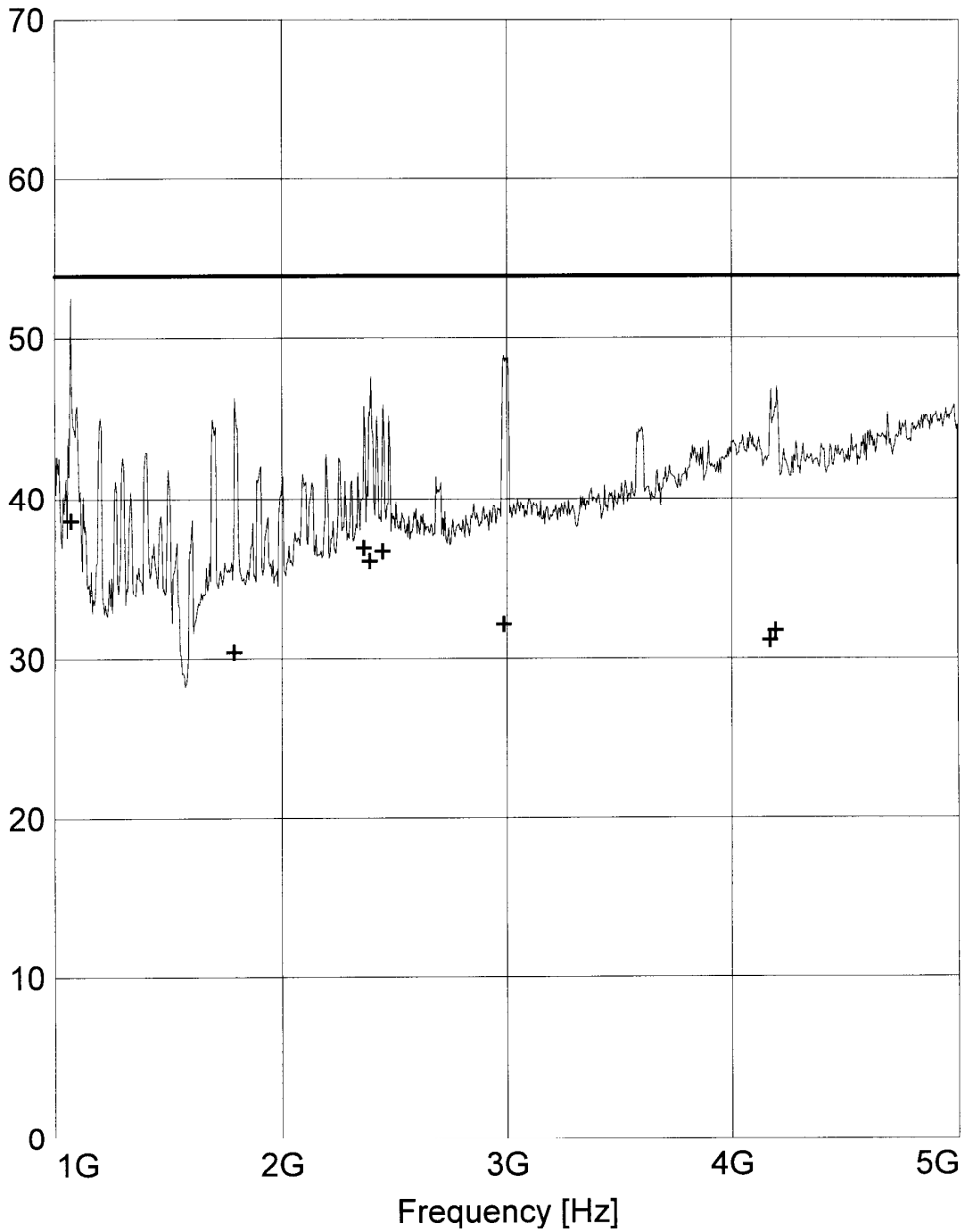
Start Frequency: 1.0 GHz Step Size: 300.0 kHz  
Stop Frequency: 5.0 GHz  
Measure Time: 10.0 ms  
IF Bandwidth: 1 MHz

Receiver: ESXI Transducer: Tensor4105v  
Signal Path: 2DC-CP7X1 System Transducer: RFin2-CP7/X1  
Meas. Mode: Lin Add. Transd. 1: Rosenberger 8m  
Tracking Gen.: Off Add. Transd. 2: None  
Input: 2DC Add. Transd. 3: None

Preamplifier: 10 dB Demodulation: AM  
RF Att.: Coupled Volume: 70 %  
Ref. Level: -30.0 dBm Squelch: --  
Min. RF Att.: 0 dB Option: None  
IF Att.: --  
Autorange: On

Curve 1: On Repetition: Single  
Curve 2: On Stop Mark: Off  
Stop Message: Off  
Stop Message:

Level [dB $\mu$ V/m]



+ + MES Average  
— MES Preview FCC  
— LIM FCC ClassB F QP/AV FCC ClassB, field strength 3m  
— LIM FCC ClassB F QP/AV FCC ClassB, field strength 3m



**MEASUREMENT RESULT: "Average"**

09.08.99 12:57

Frequency MHz	Level dB $\mu$ V/m	Transd dB	Limit dB $\mu$ V/m	Margin dB	Height cm	Azimuth deg	Polarisation
1068.700000	38.60	9.2	53.9	15.3	140.0	180.00	HORIZONTAL
1787.200000	30.40	11.0	53.9	23.5	100.0	180.00	HORIZONTAL
2362.300000	36.90	13.5	53.9	17.0	100.0	0.00	VERTICAL
2389.900000	36.10	13.4	53.9	17.8	100.0	0.00	VERTICAL
2446.600000	36.70	13.6	53.9	17.2	100.0	0.00	VERTICAL
2986.900000	32.10	14.4	53.9	21.8	100.0	330.00	VERTICAL
4169.800000	31.10	17.1	53.9	22.8	180.0	0.00	VERTICAL
4193.500000	31.70	16.8	53.9	22.2	140.0	330.00	HORIZONTAL