

Conducted noise according to:
EN 55022 class B

EUT: Scenic Mobile 750 AGP - P3-450MHz - LCD 14.1"
Manufacturer: Siemens AG
Operating Condition: Scroll "H" 1024x768x60Hz, HD+CD-Test
Test Site: Siemens AG Augsburg SK1
Operator: H. Zenkner
Configuration: Full config., PC-Card, Monitor powered external
Comment: MCM 1707 NTD, Dualdrive, AC-Adap. intern, 100MHz
Start of Test: 27.09.99 / 14:13:36

SCAN TABLE: "Volt_015-30MHZ"

Unit: dBµV

Detector: Mode:

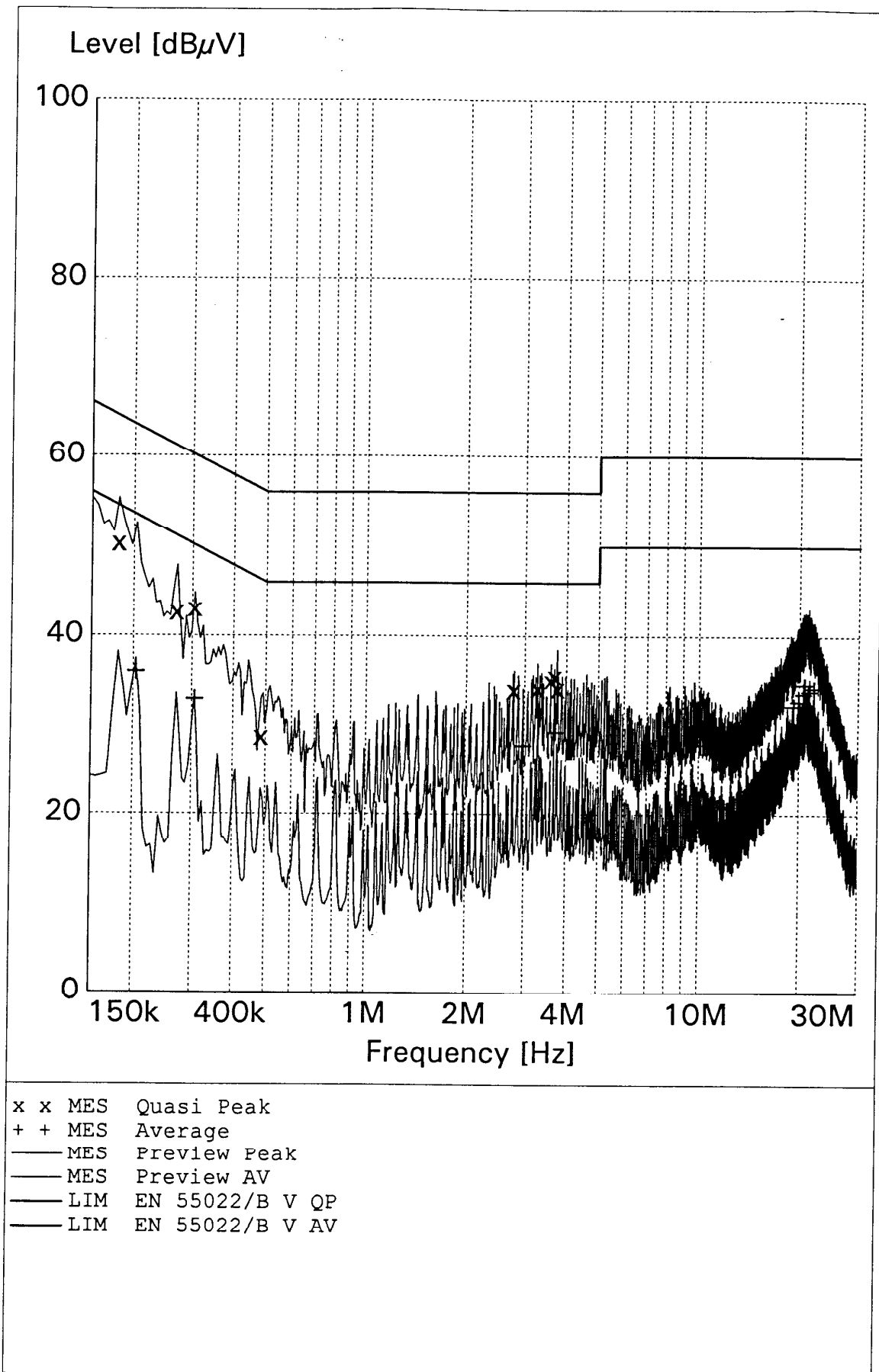
Curve 1: MaxPeak MaxHold
Curve 2: Average MaxHold

Subrange 1:

Start Frequency: 150.0 kHz Step Size: 6.0 kHz
Stop Frequency: 30.0 MHz
Measure Time: 10.0 ms
IF Bandwidth: 10 kHz

Receiver: ESHS Transducer: ESH2-Z5
Signal Path: None System Transducer: None
Meas. Mode: Lin Add. Transd. 1: ESH3-Z2
Tracking Gen.: -- Add. Transd. 2: None
Input: -- Add. Transd. 3: None

Preamplifier: Off Demodulation: A3
RF Att.: 0 dB Volume: --
Ref. Level: -- Squelch: --
Min. RF Att.: 10 dB Option: None
IF Att.: LowNoise
Autorange: On



MEASUREMENT RESULT: "Quasi Peak"

27.09.99 14:28

Frequency MHz	Level dBµV	Transd dB	Limit dBµV	Margin dB	Line	PE
0.180000	50.20	10.0	65	14.3	L1	GND
0.270000	42.50	10.0	61	18.6	L1	GND
0.306000	42.90	10.0	60	17.2	N	GND
0.486000	28.50	10.0	56	27.7	N	GND
2.784000	33.70	10.0	56	22.4	N	GND
3.276000	33.90	10.0	56	22.1	L1	GND
3.594000	34.80	10.0	56	21.2	L1	GND
3.684000	35.30	10.0	56	20.7	L1	GND
3.774000	33.80	10.0	56	22.2	L1	GND
21.288000	39.20	10.0	60	20.8	L1	GND

MEASUREMENT RESULT: "Average"

27.09.99 14:28

Frequency MHz	Level dBµV	Transd dB	Limit dBµV	Margin dB	Line	PE
0.204000	35.90	10.0	53	17.6	L1	GND
0.306000	32.70	10.0	50	17.3	N	GND
2.964000	27.60	10.0	46	18.4	N	GND
3.684000	29.10	10.0	46	16.9	L1	GND
19.140000	32.00	10.0	50	18.0	L1	GND
19.860000	32.50	10.0	50	17.5	L1	GND
20.580000	33.30	10.0	50	16.7	L1	GND
20.670000	34.40	10.0	50	15.6	L1	GND
21.390000	33.60	10.0	50	16.4	L1	GND
22.104000	34.00	10.0	50	16.0	L1	GND

Radiated emission according to:

to EN55022 class B

EUT: Scenic Mobile 750 AGP - P3 - 450 MHz LCD 14,1"
Manufacturer: Siemens AG
Operating Condition: Scroll "H" 1024x768x60Hz - HD+CD-Test
Test Site: Siemens Augsburg (Semi-anechoic chamber 10m)
Operator: M. Heuser
Configuration: Dual Drive, 100 MHz SD-RAM, AC-Adapter intern,
Comment: PC-Card, MCN 1705 NTD
Start of Test: 13.09.99 / 09:04:30

SCAN TABLE: "10m/30-1000"

Short Description: 10m Field Strength
Unit: dBuV/m

Detector: Mode:

Curve 1: MaxPeak ClearWrite

Subrange 1:

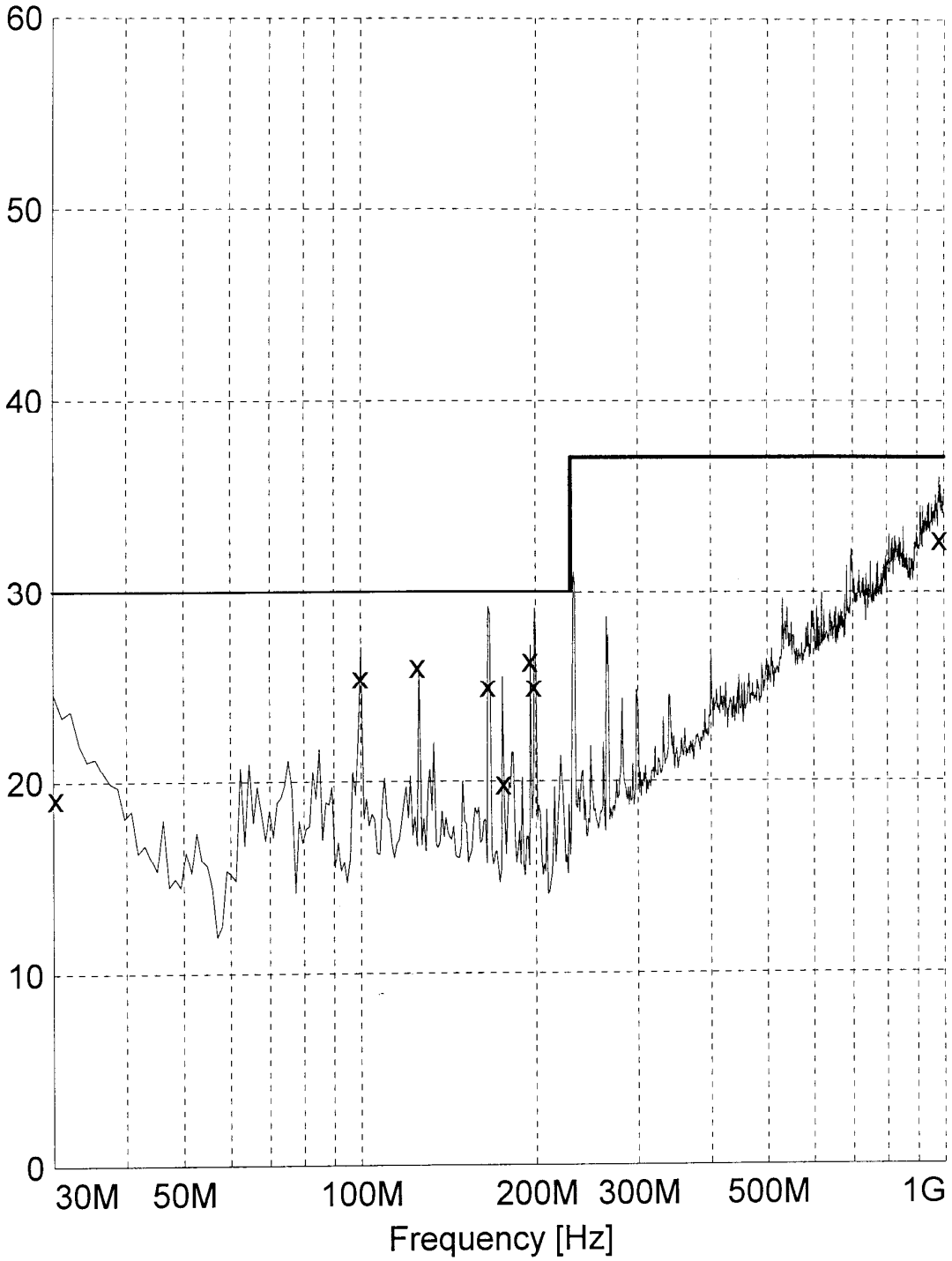
Start Frequency: 30.0 MHz Step Size: 30.0 kHz
Stop Frequency: 1.0 GHz
Measure Time: 10.0 ms
IF Bandwidth: 120 kHz

Receiver: ESXI Transducer: CBL6111 cal. 5/99
Signal Path: 2DC-CP1X1 System Transducer: RFin2-CP1/X1
Meas. Mode: Lin Add. Transd. 1: cable30-1000
Tracking Gen.: Off Add. Transd. 2: None
Input: 2DC Add. Transd. 3: None

Preamplifier: 10 dB Demodulation: AM
RF Att.: Coupled Volume: 70 %
Ref. Level: -60.0 dBm Squelch: --
Min. RF Att.: 0 dB Option: None
IF Att.: --
Autorange: On

Curve 1: On Repetition: Single
Stop Mark: Off
Stop Message: Off
Stop Message: Off

Level [dB μ V/m]



x x MES Quasi Peak
— MES Preview Peak
— LIM EN55022/B

MEASUREMENT RESULT: "Quasi Peak"

13.09.99 09:54

Frequency MHz	Level dBµV/m	Transd dB	Limit dBµV/m	Margin dB	Height cm	Azimuth deg	Polarisation
30.240000	19.20	18.6	30.0	10.8	100.0	300.00	VERTICAL
99.720000	25.50	10.6	30.0	4.5	100.0	210.00	VERTICAL
125.010000	26.10	12.6	30.0	3.9	160.0	0.00	VERTICAL
165.420000	25.00	10.6	30.0	5.0	100.0	0.00	VERTICAL
175.890000	19.90	9.8	30.0	10.1	100.0	0.00	VERTICAL
195.450000	26.40	9.7	30.0	3.6	100.0	180.00	VERTICAL
198.480000	25.00	9.8	30.0	5.0	100.0	270.00	VERTICAL
981.180000	32.70	28.6	37.0	4.3	220.0	300.00	HORIZONTAL

Radiated emission according to:

to EN55022 class B

EUT: Scenic Mobile 750 PIII 500 MHz, LCD 14,1"
Manufacturer: Siemens AG
Operating Condition: scr. "H" 1024*768/60 Hz, HD+CD-Test
Test Site: SNI-Augsburg (Semi-anechoic chamber 10m)
Operator: M. Heuser
Configuration: fully conf., CD R/W, AC-Adapter intern
Comment:
Start of Test: 21.09.99 / 10:34:40

SCAN TABLE: "10m/30-1000"

Short Description: 10m Field Strength
Unit: dBuV/m

Detector: Mode:

Curve 1: MaxPeak ClearWrite

Subrange 1:

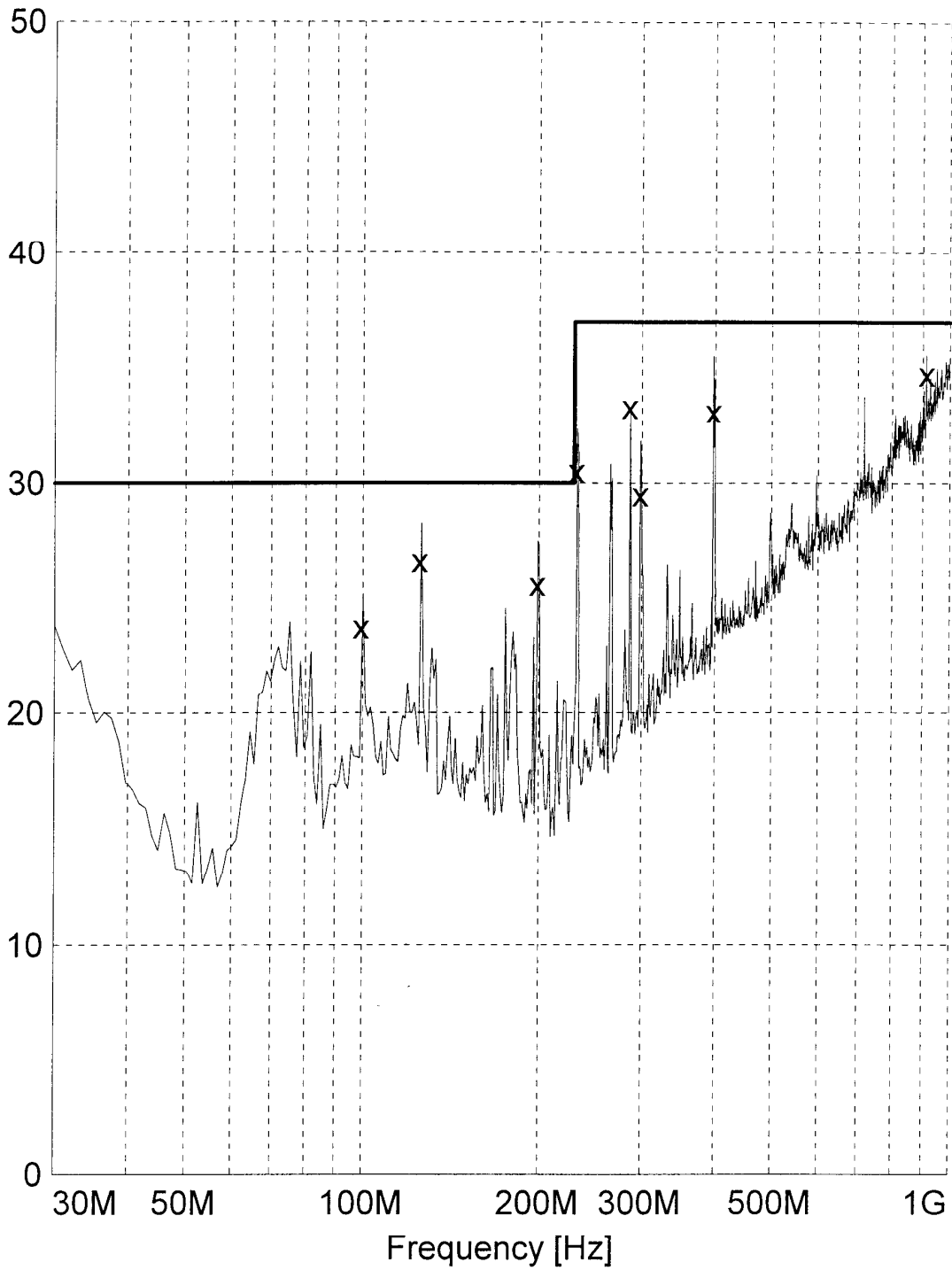
Start Frequency: 30.0 MHz Step Size: 30.0 kHz
Stop Frequency: 1.0 GHz
Measure Time: 10.0 ms
IF Bandwidth: 120 kHz

Receiver: ESXI Transducer: CBL6111 cal. 5/99
Signal Path: 2DC-CP1X1 System Transducer: RFin2-CP1/X1
Meas. Mode: Lin Add. Transd. 1: cable30-1000
Tracking Gen.: Off Add. Transd. 2: None
Input: 2DC Add. Transd. 3: None

Preamplifier: 10 dB Demodulation: AM
RF Att.: Coupled Volume: 70 %
Ref. Level: -60.0 dBm Squelch: --
Min. RF Att.: 0 dB Option: None
IF Att.: --
Autorange: On

Curve 1: On Repetition: Single
Stop Mark: Off
Stop Message: Off
Stop Message:

Level [dB μ V/m]



x x MES Quasi Peak
— MES Preview Peak
— LIM EN55022/B

MEASUREMENT RESULT: "Quasi Peak"

21.09.99 11:41

Frequency MHz	Level dBµV/m	Transd dB	Limit dBµV/m	Margin dB	Height cm	Azimuth deg	Polarisation
99.270000	23.70	10.6	30.0	6.3	220.0	180.00	VERTICAL
125.010000	26.60	12.6	30.0	3.4	100.0	180.00	VERTICAL
198.510000	25.60	9.8	30.0	4.4	400.0	210.00	HORIZONTAL
231.600000	30.50	11.2	37.0	6.5	340.0	270.00	HORIZONTAL
285.660000	33.30	14.4	37.0	3.7	280.0	0.00	HORIZONTAL
297.780000	29.50	14.7	37.0	7.5	280.0	0.00	HORIZONTAL
396.990000	33.10	17.8	37.0	3.9	280.0	0.00	HORIZONTAL
912.060000	34.70	27.0	37.0	2.3	160.0	210.00	VERTICAL

Radiated emission according to:

to FCC class B

EUT: scenic Mobile 750 PIII 500 MHz, LCD 14,1"
Manufacturer: Siemens AG
Operating Condition: scr. "H" 1024*768/60 Hz, HD+CD-Test
Test Site: SNI-Augsburg (Semi-anechoic chamber 10m)
Operator: M. Heuser
Configuration: fully conf., CD R/W, AC-Adapter intern
Comment:
Start of Test: 30.09.99 / 15:28:51

SCAN TABLE: "FCC1-5GHz"

Short Description: 3m Messung FCC 1 bis 3 GHz
Unit: dBµV/m

Detector: Mode:

Curve 1: MaxPeak MaxHold
Curve 2: Average MaxHold

Subrange 1:

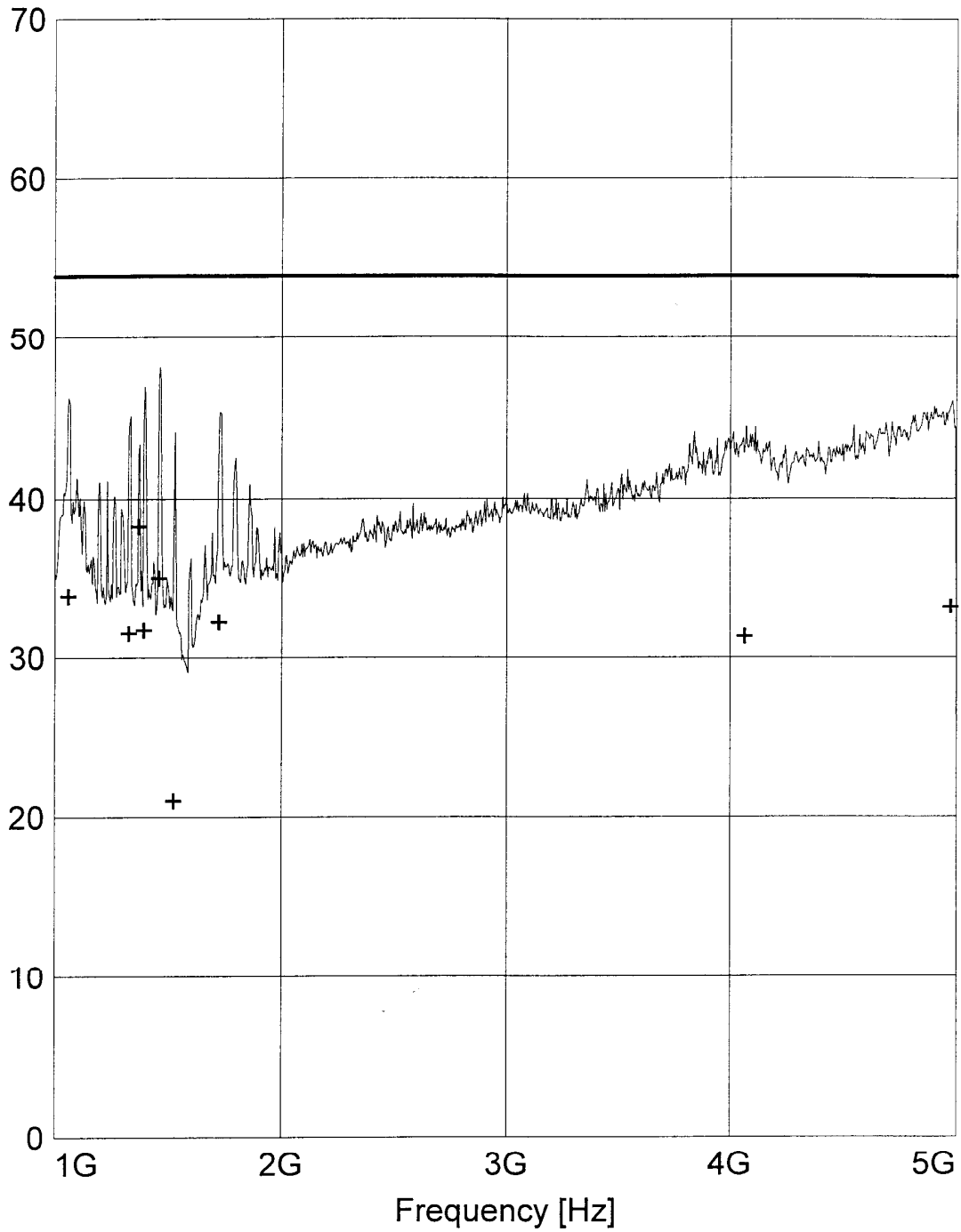
Start Frequency: 1.0 GHz Step Size: 300.0 kHz
Stop Frequency: 5.0 GHz
Measure Time: 10.0 ms
IF Bandwidth: 1 MHz

Receiver: ESXI Transducer: Tensor4105v
Signal Path: 2DC-CP7X1 System Transducer: RFin2-CP7/X1
Meas. Mode: Lin Add. Transd. 1: Rosenberger 8m
Tracking Gen.: Off Add. Transd. 2: None
Input: 2DC Add. Transd. 3: None

Preamplifier: 10 dB Demodulation: AM
RF Att.: Coupled Volume: 70 %
Ref. Level: -30.0 dBm Squelch: --
Min. RF Att.: 0 dB Option: None
IF Att.: --
Autorange: On

Curve 1: On Repetition: Single
Curve 2: On Stop Mark: Off
Stop Message: Off
Stop Message:

Level [dB μ V/m]



+ + MES Average
— MES Preview FCC
— LIM FCC ClassB F QP/AV FCC ClassB, field strength 3m
— LIM FCC ClassB F QP/AV FCC ClassB, field strength 3m

MEASUREMENT RESULT: "Average"

30.09.99 16:41

Frequency MHz	Level dBuV/m	Transd dB	Limit dBuV/m	Margin dB	Height cm	Azimuth deg	Polarisation
1059.100000	33.90	9.3	53.9	20.0	220.0	239.00	HORIZONTAL
1324.300000	31.50	9.2	53.9	22.4	100.0	0.00	HORIZONTAL
1367.800000	38.20	9.2	53.9	15.7	100.0	150.00	HORIZONTAL
1390.600000	31.70	9.0	53.9	22.2	100.0	150.00	HORIZONTAL
1456.900000	35.00	9.0	53.9	18.9	100.0	180.00	HORIZONTAL
1522.600000	21.00	9.5	53.9	32.9	260.0	119.00	VERTICAL
1721.800000	32.20	11.3	53.9	21.7	100.0	330.00	HORIZONTAL
4064.500000	31.30	18.3	53.9	22.6	260.0	119.00	VERTICAL
4972.900000	33.20	19.6	53.9	20.7	300.0	300.00	HORIZONTAL