

Radiated emission according to:

to EN55022 class B

EUT: Scenic Mobile 550 (PII 300MHz)
Manufacturer: Siemens
Operating Condition: scr. "H", 1024*768; HD/CD-Test
Test Site: SNI-Augsburg (Semi-anechoic chamber 10m)
Operator: H. Zenkner
Configuration: full config.; AC-Adapter ext; accu, FD ext., DVD
Comment: MCM1705; with PCMCIA-LAN, 13,3"TFT,
Start of Test: 16.10.1998 / 11:20:27

SCAN TABLE: "10m/30-1000"

Short Description: 10m Field Strength
Unit: dBµV/m

Detector: Mode:

Curve 1: MaxPeak ClearWrite

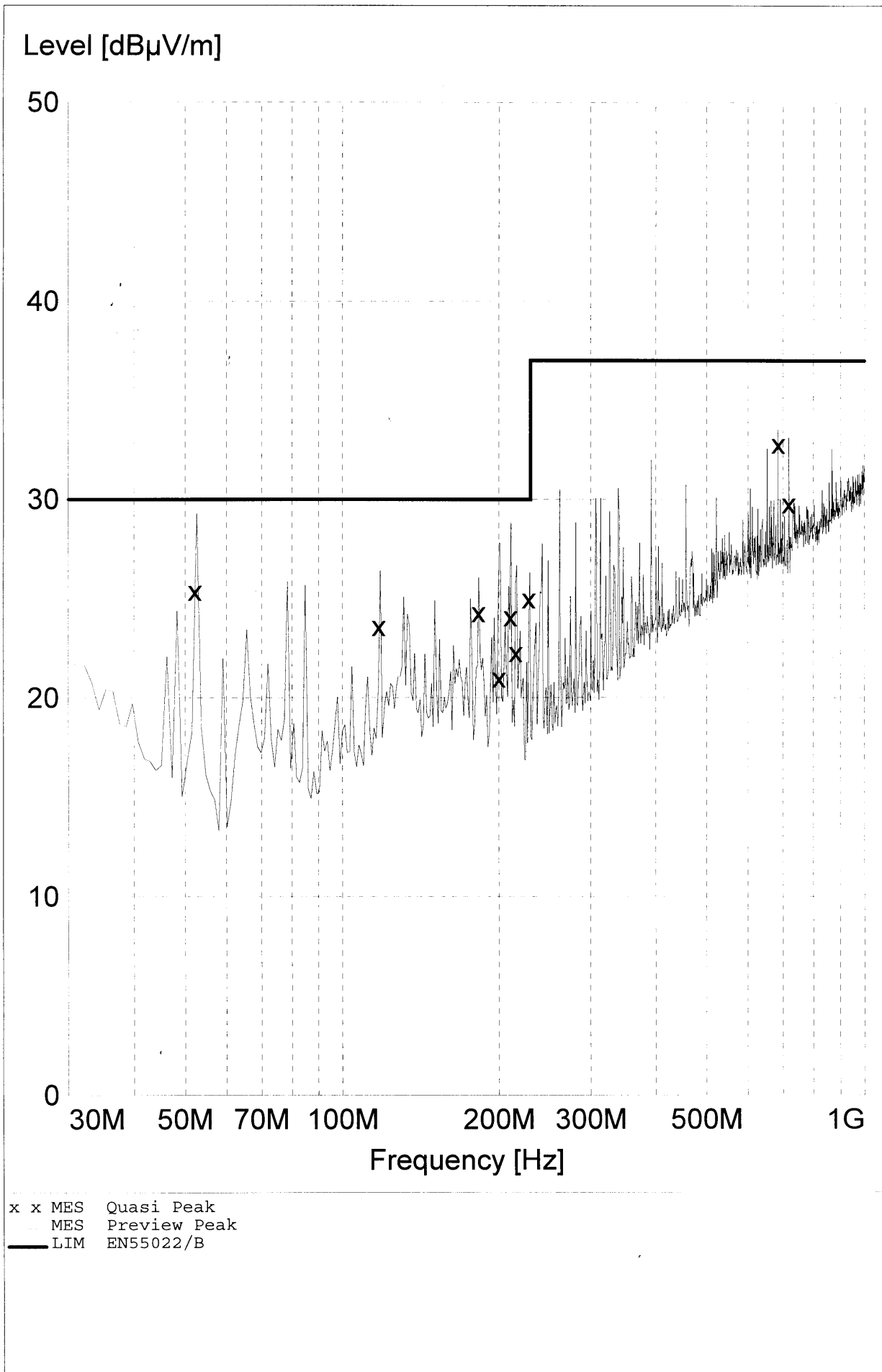
Subrange 1:

Start Frequency: 30.0 MHz Step Size: 30.0 kHz
Stop Frequency: 1.0 GHz
Measure Time: 10.0 ms
IF Bandwidth: 120 kHz

Receiver: ESXI Transducer: CBL6112 cal. 9/95
Signal Path: 2DC-CP1X1 System Transducer: RFin2-CP1/X1
Meas. Mode: Lin Add. Transd. 1: cable30-1000
Tracking Gen.: Off Add. Transd. 2: None
Input: 2DC Add. Transd. 3: None

Preamplifier: 10 dB Demodulation: AM
RF Att.: Coupled Volume: 70 %
Ref. Level: -60.0 dBm Squelch: --
Min. RF Att.: 0 dB Option: None
IF Att.: --
Autorange: On

Curve 1: On Repetition: Single
Stop Mark: Off
Stop Message: Off
Stop Message:



MEASUREMENT RESULT: "Quasi Peak"

16.10.1998 11:34

Frequency MHz	Level dB μ V/m	Transd dB	Limit dB μ V/m	Margin dB	Height cm	Azimuth deg	Polarisation
52.170000	25.40	8.2	30.0	4.5	400.0	330.00	VERTICAL
117.390000	23.60	12.9	30.0	6.3	160.0	330.00	VERTICAL
182.610000	24.30	10.8	30.0	5.6	400.0	59.00	HORIZONTAL
200.040000	21.00	10.8	30.0	8.9	400.0	29.00	HORIZONTAL
210.300000	24.10	11.4	30.0	5.8	400.0	59.00	HORIZONTAL
215.220000	22.30	11.8	30.0	7.6	400.0	59.00	HORIZONTAL
228.270000	25.00	12.6	30.0	4.9	340.0	90.00	HORIZONTAL
684.780000	32.80	21.7	37.0	4.1	400.0	180.00	VERTICAL
717.390000	29.80	22.0	37.0	7.1	160.0	0.00	VERTICAL

Radiated emission according

to FCC class B

EUT: Scenic mobile 510 AGP (300MHz)
Manufacturer: Siemens
Operating Condition: scroll H; 1024*768 and periph test
Test Site: SNI-Augsburg (Semi-anechoic chamber 10m)
Operator: H. Zenkner
Configuration: full config. with external AC/DC adapter and ACCU
Comment: MCM 1707 NTD
Start of Test: 28.10.98 / 12:42:39

SCAN TABLE: "FCC1-3GHz"

Short Description: 3m Messung FCC 1 bis 3 GHz
Unit: dBuV/m

Detector: Mode:

Curve 1: MaxPeak MaxHold
Curve 2: Average MaxHold

Subrange 1:

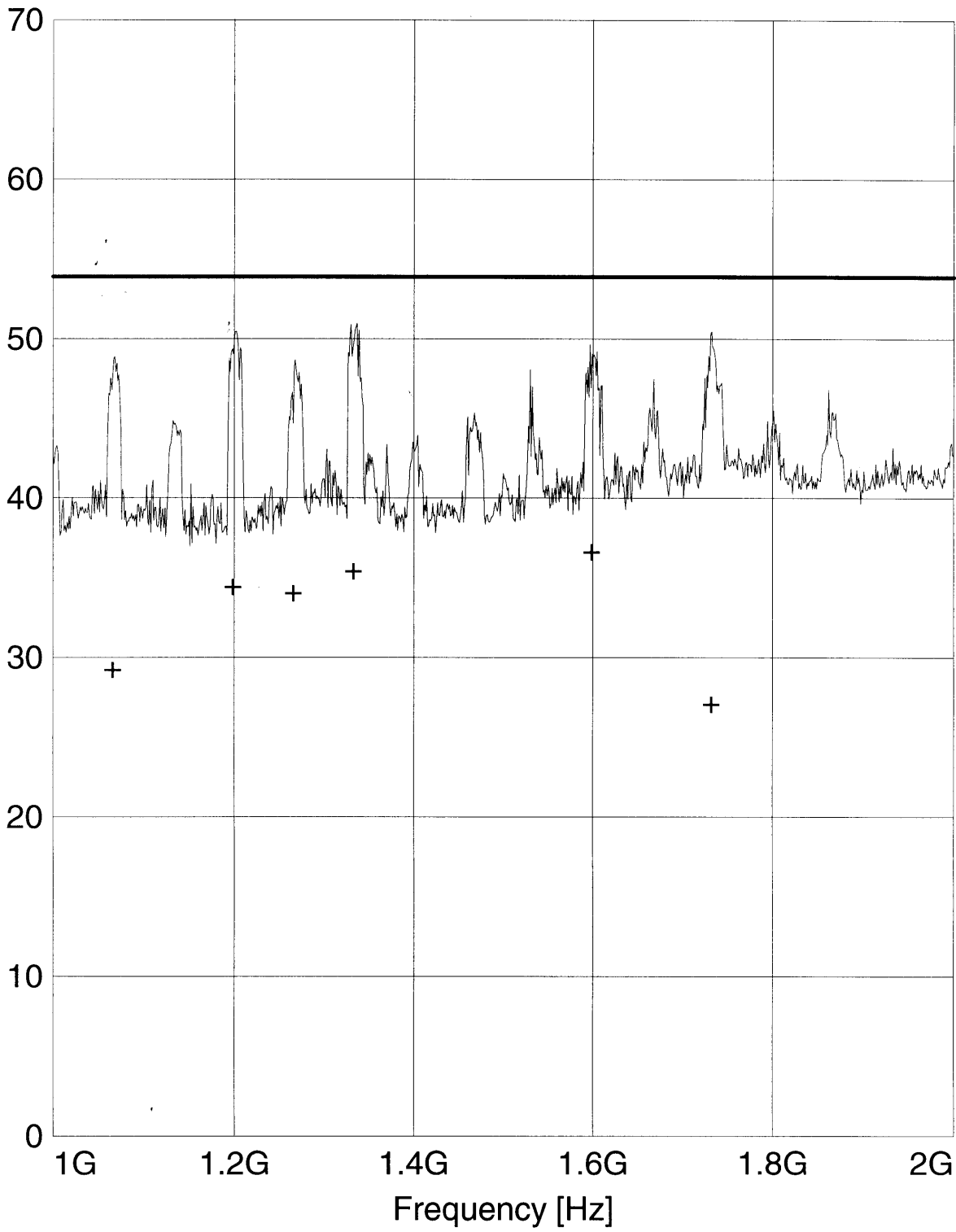
Start Frequency: 1.0 GHz Step Size: 300.0 kHz
Stop Frequency: 3.0 GHz
Measure Time: 10.0 ms
IF Bandwidth: 1 MHz

Receiver: ESXI Transducer: Tensor4105v
Signal Path: 2DC-CP7X1 System Transducer: RFin2-CP7/X1
Meas. Mode: Lin Add. Transd. 1: Rosenberger 8m
Tracking Gen.: Off Add. Transd. 2: None
Input: 2DC Add. Transd. 3: None

Preamplifier: 10 dB Demodulation: AM
RF Att.: Coupled Volume: 70 %
Ref. Level: -30.0 dBm Squelch: --
Min. RF Att.: 0 dB Option: None
IF Att.: --
Autorange: On

Curve 1: On Repetition: Single
Curve 2: On Stop Mark: Off
Stop Message: Off
Stop Message:

Level [dBμV/m]



+ + MES Average
—— MES Preview Peak
—— LIM FCC ClassB F QP/AV FCC ClassB, field strength 3m
—— LIM FCC ClassB F QP/AV FCC ClassB, field strength.3m

MEASUREMENT RESULT: "Average"

28.10.98 12:51

Frequency MHz	Level dBµV/m	Transd dB	Limit dBµV/m	Margin dB	Height cm	Azimuth deg	Polarisation
1066.000000	29.40	9.2	53.9	24.4	100.0	249.00	HORIZONTAL
1198.900000	34.60	8.3	53.9	19.2	100.0	219.00	HORIZONTAL
1265.800000	34.20	8.8	53.9	19.6	160.0	300.00	VERTICAL
1332.700000	35.60	9.1	53.9	18.2	220.0	300.00	VERTICAL
1598.800000	36.80	9.9	53.9	17.0	100.0	29.00	VERTICAL
1732.000000	27.20	11.4	53.9	26.6	100.0	69.00	HORIZONTAL

Radiated emission according to:

to EN55022 class B

EUT: Scenic Mobile 520 13,3"TFT; DVD; 300MHz
Manufacturer: Siemens
Operating Condition: scr. "H", 1024*768; HD/CD-Test
Test Site: SNI-Augsburg (Semi-anechoic chamber 10m)
Operator: R. Schaufler
Configuration: full config.; AC-Adapter intern
Comment: Modifications: 14.10.98
Start of Test: 14.10.1998 / 18:32:47

SCAN TABLE: "10m/30-1000"

Short Description: 10m Field Strength
Unit: dB μ V/m

Detector: Mode:

Curve 1: MaxPeak ClearWrite

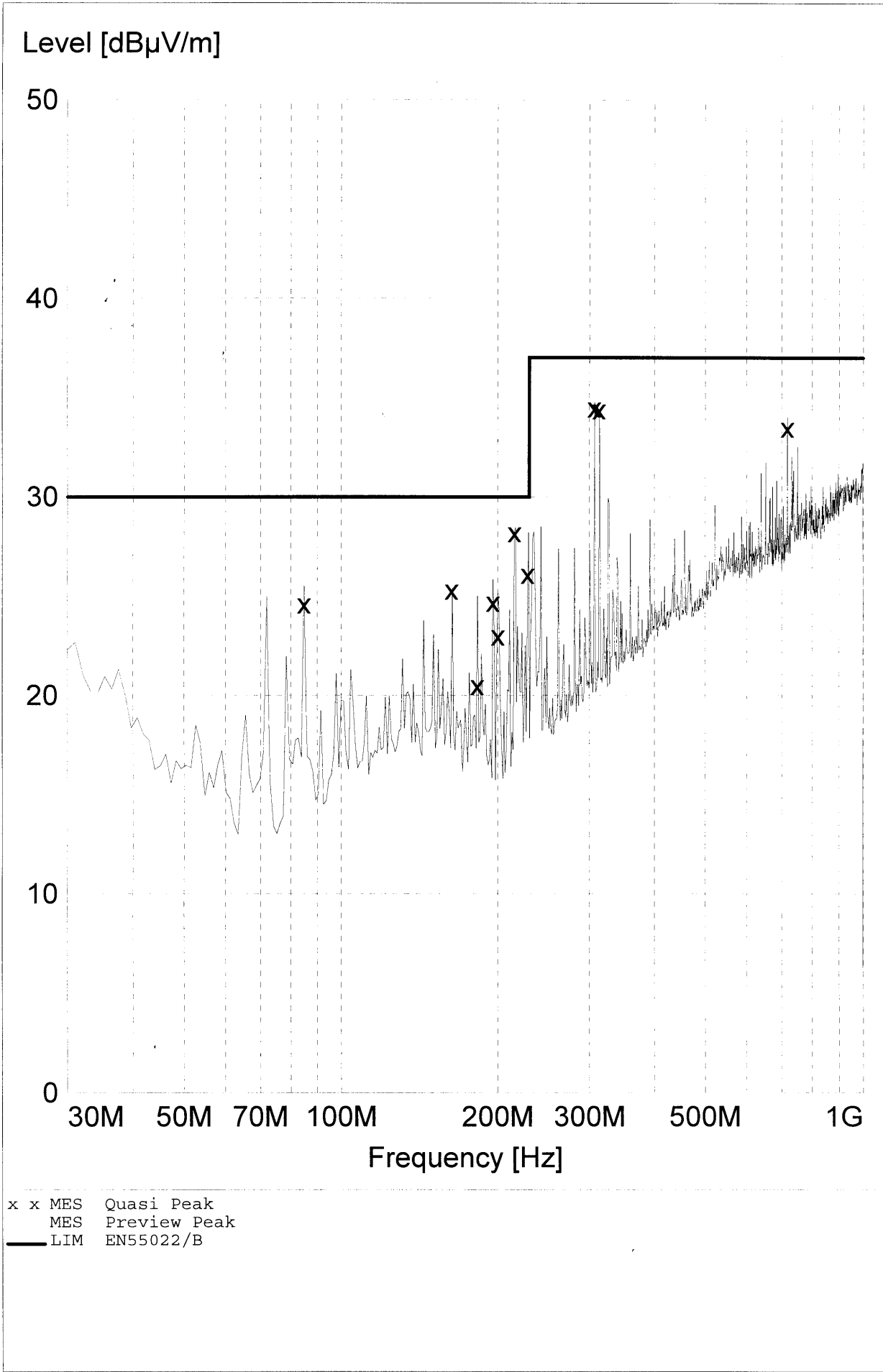
Subrange 1:

Start Frequency: 30.0 MHz Step Size: 30.0 kHz
Stop Frequency: 1.0 GHz
Measure Time: 10.0 ms
IF Bandwidth: 120 kHz

Receiver: ESXI Transducer: CBL6112 cal. 9/95
Signal Path: 2DC-CP1X1 System Transducer: RFin2-CP1/X1
Meas. Mode: Lin Add. Transd. 1: cable30-1000
Tracking Gen.: Off Add. Transd. 2: None
Input: 2DC Add. Transd. 3: None

Preamplifier: 10 dB Demodulation: AM
RF Att.: Coupled Volume: 70 %
Ref. Level: -60.0 dBm Squelch: --
Min. RF Att.: 0 dB Option: None
IF Att.: --
Autorange: On

Curve 1: On Repetition: Single
Stop Mark: Off
Stop Message: Off
Stop Message: Off



MEASUREMENT RESULT: "Quasi Peak"

14.10.1998 19:35

Frequency MHz	Level dB μ V/m	Transd dB	Limit dB μ V/m	Margin dB	Height cm	Azimuth deg	Polarisation
84.780000	24.60	9.0	30.0	5.3	160.0	29.00	VERTICAL
163.050000	25.30	11.6	30.0	4.6	100.0	210.00	VERTICAL
182.610000	20.50	10.8	30.0	9.4	100.0	180.00	VERTICAL
195.660000	24.70	10.8	30.0	5.2	100.0	90.00	VERTICAL
200.190000	23.00	10.8	30.0	6.9	100.0	210.00	VERTICAL
215.220000	28.20	11.8	30.0	1.7	100.0	29.00	VERTICAL
228.270000	26.10	12.6	30.0	3.8	100.0	90.00	VERTICAL
306.540000	34.50	15.6	37.0	2.4	100.0	0.00	VERTICAL
313.050000	34.40	15.8	37.0	2.5	100.0	0.00	VERTICAL
717.390000	33.50	22.0	37.0	3.4	280.0	29.00	VERTICAL

Radiated emission according

to FCC class B

EUT: Scenic mobile 510 AGP (300MHz)
Manufacturer: Siemens
Operating Condition: scroll H; 1024*768 and periph test
Test Site: SNI-Augsburg (Semi-anechoic chamber 10m)
Operator: H. Zenkner
Configuration: full config. with internal AC/DC adapter
Comment: MCM 1707 NTD
Start of Test: 28.10.98 / 12:55:41

SCAN TABLE: "FCC1-3GHz"

Short Description: 3m Messung FCC 1 bis 3 GHz
Unit: dBuV/m

Detector: Mode:

Curve 1: MaxPeak MaxHold
Curve 2: Average MaxHold

Subrange 1:

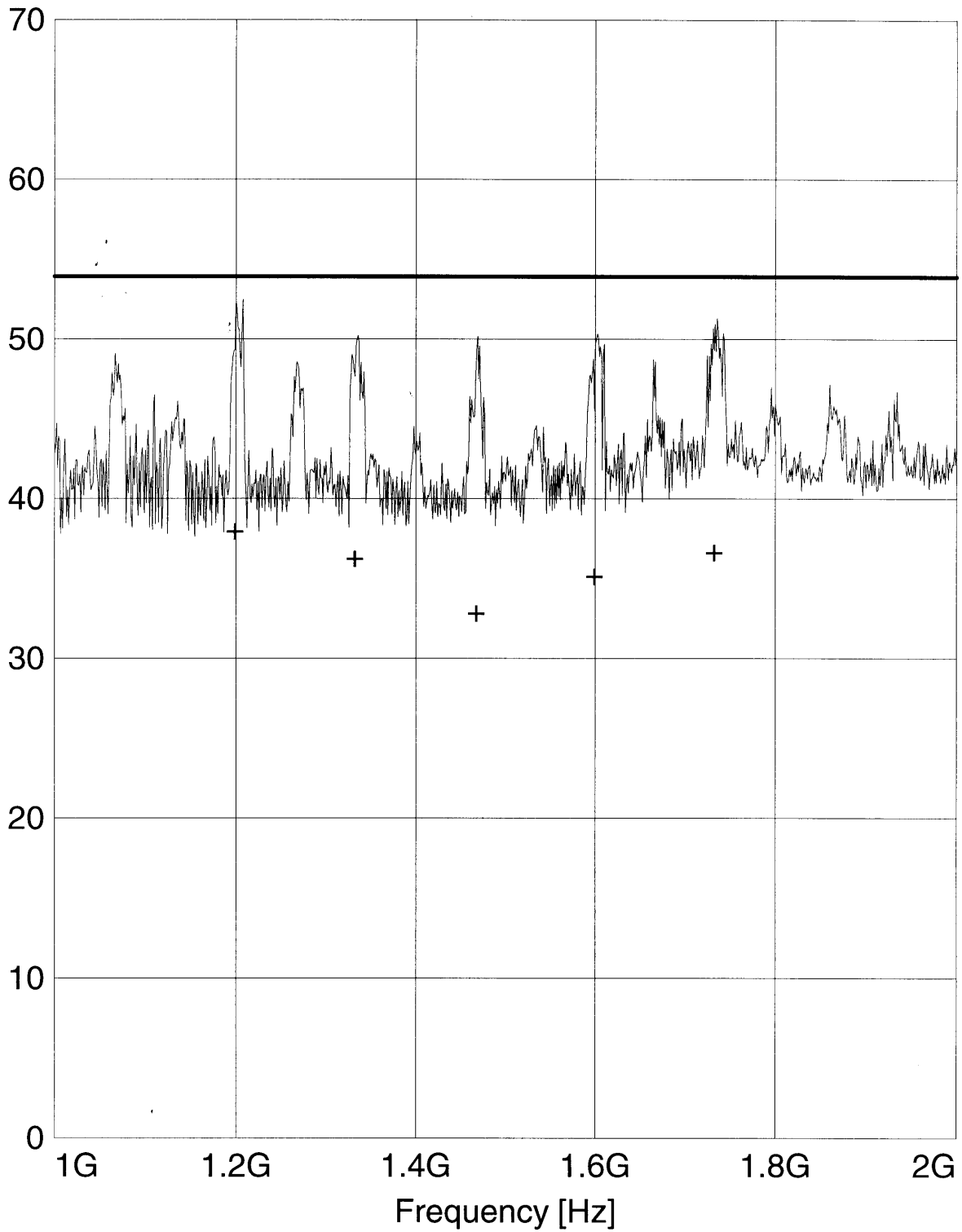
Start Frequency: 1.0 GHz Step Size: 300.0 kHz
Stop Frequency: 3.0 GHz
Measure Time: 10.0 ms
IF Bandwidth: 1 MHz

Receiver: ESXI Transducer: Tensor4105v
Signal Path: 2DC-CP7X1 System Transducer: RFin2-CP7/X1
Meas. Mode: Lin Add. Transd. 1: Rosenberger 8m
Tracking Gen.: Off Add. Transd. 2: None
Input: 2DC Add. Transd. 3: None

Preamplifier: 10 dB Demodulation: AM
RF Att.: Coupled Volume: 70 %
Ref. Level: -30.0 dBm Squelch: --
Min. RF Att.: 0 dB Option: None
IF Att.: --
Autorange: On

Curve 1: On Repetition: Single
Curve 2: On Stop Mark: Off
Stop Message: Off
Stop Message:

Level [dB μ V/m]



+ + MES Average
— MES Peak
— LIM FCC ClassB F QP/AV FCC ClassB, field strength 3m
— LIM FCC ClassB F QP/AV FCC ClassB, field strength.3m

MEASUREMENT RESULT: "Average"

28.10.98 13:44

Frequency MHz	Level dBµV/m	Transd dB	Limit dBµV/m	Margin dB	Height cm	Azimuth deg	Polarisation
1199.200000	38.10	8.3	53.9	15.7	100.0	339.00	HORIZONTAL
1332.400000	36.40	9.1	53.9	17.4	220.0	300.00	VERTICAL
1467.700000	33.00	9.1	53.9	20.8	100.0	339.00	HORIZONTAL
1599.100000	35.30	9.9	53.9	18.5	160.0	309.00	HORIZONTAL
1732.300000	36.80	11.4	53.9	17.0	100.0	339.00	HORIZONTAL